



*Simmental*

*SimAngus™*

**Sargeant  
Farms**

*Grass Time*

**PRODUCTION  
SALE**

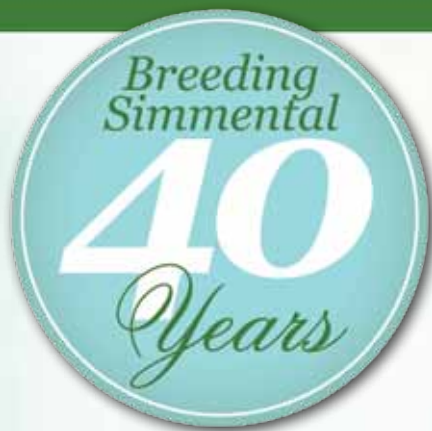
Join us on Saturday  
**May 25, 2013**

Sale Time: 12 Noon CST  
Central Livestock Association Rock Creek  
Pine City, Minnesota  
Selling 100 Head!

*Pairs*

*Opens*

*Bulls*



We are very proud to be offering you over 110 head of the very finest Simmental and Sim/Angus genetics available within the Sargeant program. This offering represents our breeding philosophy of raising solid, functional females, from the ground up that excel in traits that make up our everyday function.

These animals have been genetically engineered and managed to excel in fertility, longevity, reproduction, growth and carcass merit along with phenotypical excellence. These are the keeping kind, the kind that usually stay in the replacement pen here at Sargeant's Simmental Ranch. We welcome you on May 25th, and hope that you can come see for yourself what we've been doing.

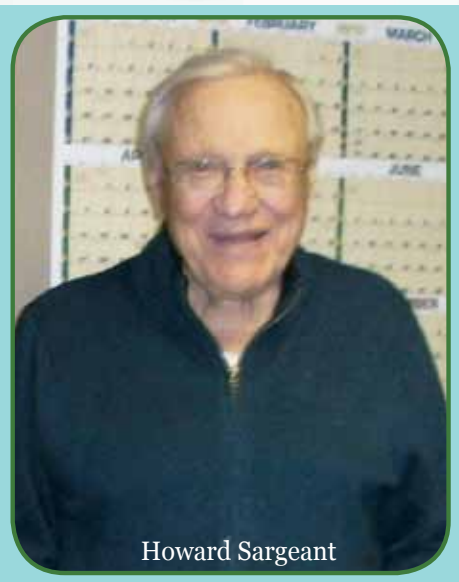
We feel our approach has proven very successful over the last 40 years of building this herd. As you glance through the sale offering, you will find that we are offering some exciting lots both in the purebred category as well as with some very exciting percentage blood individuals. We have selected some outstanding females and bred them to excellent Angus sires, yet maintained maximum heterosis by breeding the percentage heifers to Purebred Simmental.

We are very excited about the future of these females. With the investment of embryo transfer and artificial insemination we are able to offer you genetics that would normally not leave the Sargeant herd. All of the females have been ultra-sounded and either will have calved by sale time, or will be calving shortly after. Please refer to the breeding guarantee for further clarification.

Prevention is the goal of our health program and we uphold a very rigorous vaccination program. In addition, the cattle have been ear notched, tested for BVD, and are all PI negative.

Thank you to our past and future customers for the opportunity to share with you our sale offerings. We are looking forward to visiting with each and every one of you on sale day. Feel free to call Adam or Meg at the ranch for more information. Otherwise, we look forward to seeing you all there on sale day, May 25th.

I would like to make a special thanks to Howard and his family for giving me the opportunity to manage here at Sargeant Farms. I would also like to thank my fiancé Megan and my employees Tony, Phil, and Dave as well as the friends and family for all their work, to make this sale day possible.



Howard Sargeant



Adam & Megan Trest

Sincerely,  
Manager - Adam Trest  
Sargeant Farms

**VACCINATION AND HERD HEALTH:**

All mature cattle were vaccinated last fall with Bovi-Sheild Gold FP5 VL5 HB, Ultrabac-8, Somubac and poured with Dectomax Pour On. All cattle were poured a second time with Dectomax before the sale. All Heifers were Bangs vaccinated after weaning.

**Sargeant Farms**

52609 Fleming Logging Road • Sandstone, MN 55072  
Howard Sargeant 651-464-3345 Owner  
Adam Trest, Manager 320-630-3608 or 320-245-2830 (Farm)  
sargeant.farms@wildblue.net

**SALE PROFESSIONALLY MANAGED BY:**

*Eberspacher*  
ENTERPRISES INC.

Val & Lori Eberspacher 507-532-6694  
Val Cell 612-805-7405  
Kelly Schmidt 406-599-2395  
sales@ebersale.com

[www.ebersale.com](http://www.ebersale.com)



**Sargeant  
Farms**  
*Grass Time*  
**PRODUCTION  
SALE**

**SCHEDULE:**

**Friday, May 24th**

Noon til Dark: Viewing of Sale Cattle

**Saturday, May 25th**

8:00 am: Coffee & Donuts / Sale Cattle on Display

11:00 am: Complimentary Lunch

**12:00 Noon Sharp: Sargeant Farms Grass Time Sale 2013**

**SALE LOCATION:** Central Livestock Association Rock Creek Market  
3923 State Highway 70, Pine City, MN 55063

**MOTELS & SALE HEADQUARTERS:**

AmericInn Lodge & Suites North Branch 651-674-8627  
38675 14th Ave, North Branch MN 55056

**Other Hotels:**

Crossings by Grandstay Inn & Suites 763-689-0542  
300 Garfield Street S., Cambridge, MN 55008 (located next to  
North Branch Outlet Mall)

Grand Casino Hinckley 800-472-6321

**AIRPORTS:** Mpls/St. Paul International Airport - 1 1/2 hrs from sale site

**AUCTIONEER:** Col. Tracy Harl 402-469-3852

**MARKETING REPRESENTATIVES:**

Val Eberspacher, EE Sales 612-805-7405

Kelly Schmidt, EE Sales 406-599-2395

Dustin Carter, LPI Inc. 712-898-9972

Luke Keller, ASA Rep 406-599-2394

Tom Rooney, Lee AgriMedia Group 515-491-6025

Dale Heidelberg, Central Livestock Association 320-469-0760

**ANNOUNCEMENTS:** Announcements made sale day and from the auction block during the sale take precedence over printed material associated with this sale. Anyone attending this sale attends at their own risk. Breeders or any of the sale force will not be responsible for any personal injury attending this sale.

**TERMS & CONDITIONS:** All cattle sell under the Terms & Conditions of the American Simmental Association.

**EPDs:** Please note that EPDs may change from the time the sale catalog is printed until registration papers are transferred. EPDs listed are Spring 2013 numbers.



**SALE ORDER & UPDATES:** Additional information and sale order can be found on the Eberspacher Enterprises web site and Facebook page. Like us and receive updates automatically.

**TRUCKING:** Sargeant Farms and sale force will assist buyers in coordinating and making the most economical trucking arrangements possible.

**LIVESTOCK INSURANCE:** Insurance will be available sale day through sale management and Jame Secondino, American Livestock Insurance, 765-832-2697.



**Sale Day Phones:**  
**Adam 320-630-3608**  
**Val 612-805-7405**  
**Kelly 406-599-2395**





**Lady Sarge Kallie X0088**  
*Red Dbl Polled Purebred*

CE	BW	WW	YW	MCE	Milk	MWW	Stay
11	1.3	61	90	7	19	49	19
DOC	CW	YG	Marb	BF	REA	API	TI
11.4	25.1	-.28	-.03	-.040	.85	106	61

Hooks Pacesetter 8P      Hooks Shear Force 38K  
 Lady Sarge Tasha U8097      Hooks Meah 22M  
    GWS Ebonys Trademark 6N  
    Lady Sarge Natasha N3221

This will be one of the better young red Simmental pairs of the day. She is a Pacesetter daughter who is bred to the proven red Simmental sire, Red Iron.

**Lot 4A: A3128**  
 BD: 55-13 • BW: 72 • Red Bull • Sire: Red Iron T720

ASA#2547831  
 BD: 2-14-10  
 Tattoo: X0088  
 Adj BW: 77  
 Adj WW: 688



**Lady Sarge X0077**  
*Black Dbl Polled Purebred*

Hearthstone Osage S690      GWS Ebonys Trademark 6N  
 HPF Ms. Covergirl N030  
 KS Debbie N14      Brooks Above Par  
                                  Miss Preferred Playmate 52J

CE	BW	WW	YW	MCE	Milk	MWW	Stay
5	3.8	73	107	4	17	53	20
DOC	CW	YG	Marb	BF	REA	API	TI
8.8	38.7	-.22	-.10	-.050	.74	94	62

**Lot 5A: A3152**  
 BD: 5-6-13 • BW: 83 • Black Bull • Sire: Hooks Forum 77J

ASA#2547788  
 BD: 2-10-10  
 Tattoo: X0077  
 Adj BW: 80  
 Adj WW: 692



**Lady Sarge X0109**  
*Black Dbl Polled Purebred*

Hearthstone Osage S690      GWS Ebonys Trademark 6N  
 HPF Ms. Covergirl N030  
 Lady Sarge Hummer      HC Hummer 12M  
     T7016      Lady Sarge P4134

CE	BW	WW	YW	MCE	Milk	MWW	Stay
6	3.0	66	93	6	19	52	19
DOC	CW	YG	Marb	BF	REA	API	TI
9.6	29.5	-.24	-.02	-.050	.73	97	61

**Lot 6A: A3049**  
 BD: 4-27-13 • BW: 77 • Black Bull • Sire: Hooks Forum 77J

ASA#2547830  
 BD: 2-22-10  
 Tattoo: X0109  
 Adj BW: 79  
 Adj WW: 608



**Miss Sarge X0169**  
*Red Dbl Polled 3/4 SM 1/4 AR*

Sarge Gold Nugget U8060      Wheatland Bull 131L  
    NJC SVF Love Me Dont U  
 Sandy Sarge S6265      Winchester HR P8315  
    Red Lady Sarge J9006

CE	BW	WW	YW	MCE	Milk	MWW	Stay
10	.7	57	82	8	19	47	*
DOC	CW	YG	Marb	BF	REA	API	TI
6.3	19.7	-.20	.06	-.050	.46	103	59

Pasture Sire: Red Sarge R5300 from 8-13 to 10-19-12

ASA#2547806  
 BD: 3-15-10  
 Tattoo: X0169  
 Adj BW: 72  
 Adj WW: 520



**Lady Sarge X0177**  
*Black Dbl Polled Purebred*

Sarge Gold Nugget U8060      Wheatland Bull 131L  
    NJC SVF Love Me Dont U  
 Lady Sarge K129      HVR Lexus D372  
    Sarges Lady F6130

CE	BW	WW	YW	MCE	Milk	MWW	Stay
2	4.7	78	111	2	24	63	15
DOC	CW	YG	Marb	BF	REA	API	TI
*	42.3	-.14	-.09	-.070	.43	81	63

A.I. Sire: HTP SVF In Dew Time on 7-21-12

ASA#2547759  
 BD: 3-21-10  
 Tattoo: X0177  
 Adj BW: 84  
 Adj WW: 731



**Lady Sarge Blk Rose X0234**  
*Black Dbl Polled Purebred*

CE	BW	WW	YW	MCE	Milk	MWW	Stay
9	3.4	84	122	10	26	67	22
DOC	CW	YG	Marb	BF	REA	API	TI
12.6	47	-.16	.16	-.060	.57	123	76

ASA#2547802  
 BD: 4-14-10  
 Tattoo: X0234  
 Adj BW: 79  
 Adj WW: 793

GW Lucky Man 644N      GW Lucky Charm 665K  
 GW Miss 600U 964J  
 Lady Sarge Bk Ruby R5154      GFI Magnum K52  
 Lady Sarge K144

Lady Sarge Black Rose could easily be the top three year old coming through the sale. She is a Lucky Man daughter bred to Hooks Forum. Lucky Man has thrown some really fancy daughters in the past and Black Rose definitely follows suit. Her calf will be sure to impress.

**Lot 9A: A3102**  
 BD: 5-2-13 • BW: 69 • Black Heifer • Sire: Hooks Forum 77J



**Lady Sarge X0269**  
*Black Dbl Polled Purebred*

CE	BW	WW	YW	MCE	Milk	MWW	Stay
10	1.5	62	85	6	19	50	21
DOC	CW	YG	Marb	BF	REA	API	TI
10.1	22.6	-.28	.02	-.060	.69	109	62

ASA#2547833  
 BD: 5-4-10  
 Tattoo: X0269  
 Adj BW: 78  
 Adj WW: 641

Sarge R5036      SS Goldmine L42  
 Triple C Sweet & Sassy N  
 Lady Sarge Tasha U8090      GWS Ebonys Trademark 6N  
 Lady Sarge Natasha N3221

Just like Lady Sarge Black Rose, X0269 will impress anyone looking to improve their herd with Simmental genetics and her calf will be no different. This is a pair to look out for on sale day.

**Lot 10A: A3098**  
 BD: 5-2-13 • BW: 77 • Red Heifer • Sire: Hooks Forum 77J

NOTE: All bred females will have calf at side by sale day. Additional information available at [www.ebersale.com](http://www.ebersale.com)

Lot  
**11**

**Lady Sarge YZ1004**  
Red DbL Polled Purebred

ASA#2619356  
BD: 1-2-11  
Tattoo: YZ1004  
Adj BW: 76  
Adj WW: N/A

GCF Mr. Amigo CNS Dream On L186  
GCF Miss MT-Zel  
Lady Sarge P4173 Sarge K134  
Lady Sarge K64

CE	BW	WW	YW	MCE	Milk	MWW	Stay
12	.1	68	88	8	14	48	20
DOC	CW	YG	Marb	BF	REA	API	TI
11.1	20.8	-.34	.01	-.070	.65	114	67

Lot 11A: A3139

BD: 5-6-13 • BW: 70 • Black Bull • Sire: Sarge Y1047

GCF Mr. Amigo



Lot  
**12**

**Lady Sarge YZ1009**  
Black DbL Polled Purebred

ASA#2619357  
BD: 1-3-11  
Tattoo: YZ1009  
Adj BW: 66 Twin  
Adj WW: N/A

BMR Explorer Westfall Voyager 721P  
WW Miss My Dream 429R  
Lady Sarge P4198 Sarge K134  
Lady Sarge H8087

CE	BW	WW	YW	MCE	Milk	MWW	Stay
9	1.7	57	72	7	28	56	19
DOC	CW	YG	Marb	BF	REA	API	TI
2.6	14.0	-.23	-.09	-.060	.36	94	56

Lot 12A: A3001

BD: 3-20-13 • BW: 74 • Black Heifer • Sire: Mytty In Focus

BMR Explorer



Lot  
**13**

**Lady Sarge Y1044**  
Black DbL Polled Purebred

ASA#2619368  
BD: 1-18-11  
Tattoo: Y1044  
Adj BW: 79  
Adj WW: N/A

Mr. NLC Superior S6018 Ellingson Legacy M229  
EBS Jokers Caren  
Lady Sarge Above Par Brooks Above Par  
T7245 RCC/TCF Real Sweet

CE	BW	WW	YW	MCE	Milk	MWW	Stay
8	1.1	55	84	7	19	46	21
DOC	CW	YG	Marb	BF	REA	API	TI
10.8	21.5	-.38	-.11	-.080	.77	99	56

Lot 13A: A3138

BD: 5-2-13 • BW: 72 • Black Heifer • Sire: Sarge Y1047

Mr. NLC Superior S6018



Lot  
**14**

**Lady Sarge YZ1010**  
Black DbL Polled Purebred

ASA#2619358  
BD: 1-3-11  
Tattoo: YZ1010  
Adj BW: 60 Twin  
Adj WW: N/A

BMR Explorer Westfall Voyager 721P  
WW Miss My Dream 429R  
Lady Sarge P4198 Sarge K134  
Lady Sarge H8087

CE	BW	WW	YW	MCE	Milk	MWW	Stay
9	1.7	57	72	7	28	56	19
DOC	CW	YG	Marb	BF	REA	API	TI
2.6	14	-.23	-.09	-.060	.36	94	56

Lot 14A: A3015

BD: 3-29-13 • BW: 72 • Black Bull • Sire: HTP SVF In Dew Time

Lot  
**15**

**Lady Sarge Y1024**  
Black Polled Purebred

ASA#2619360  
BD: 1-6-11  
Tattoo: Y1024  
Adj BW: 80  
Adj WW: N/A

Sarge 1st Dream T7004 GCF First Dream P13  
Lady Sarge U8109 Lady Sarge Natasha N3221  
Great Guns Frederick 48B  
Sarges Lady G7097

CE	BW	WW	YW	MCE	Milk	MWW	Stay
6	3.2	66	89	10	26	59	18
DOC	CW	YG	Marb	BF	REA	API	TI
8.3	26.4	-.29	-.03	-.080	.54	94	61

Pasture Sire: Sarge Y1047 from 7-23 to 10-19-12



HTP SVF In Dew Time



ASA#2619370  
BD: 1-19-11  
Tattoo: Y1048  
Adj BW: 86  
Adj WW: N/A

### Lady Sarge Y1048

Black Dbl Polled Purebred

HTP SVF In Dew Time      CNS Dream On L186  
329N                              HTP SVF Honeydew  
   GW Lucky Charm 665K  
   GW Miss Pasque 643H

CE	BW	WW	YW	MCE	Milk	MWW	Stay*
13	2.4	71	101	10	16	52	
DOC	CW	YG	Marb	BF	REA	API	TI
9.9	32.8	-.18	.25	-.050	.50	125	70

Pasture Sire: Sarge Y1047 from 7-23 to 10-19-12



### Y1060

Red Polled 1/2 SM 1/2 CS

ASA#2710395  
BD: 1-24-11  
Tattoo: Y1060  
Adj BW: 85  
Adj WW: N/A

U8283                              Hooks Shear Force 38K  
   Lady Sarge Chris S6259  
U8232                              LRS Preferred Stock 370C  
   SRS G733 Glimmer

CE	BW	WW	YW	MCE	Milk	MWW	Stay
11	1.8	66	96	9	27	60	20
DOC	CW	YG	Marb	BF	REA	API	TI
11.4	29.5	-.21	.21	-.050	.64	121	70

**Lot 17A: A3022**

BD: 4-3-13 • BW: 83 • Red Bull • Sire: Red Iron T720



### Lady Sarge Y1070

Black Dbl Polled Purebred

ASA#2619377  
BD: 1-28-11  
Tattoo: Y1070  
Adj BW: 116  
Adj WW: N/A

Sarge 1st Dream T7004      GCF First Dream P13  
Lady Sarge P4242              Lady Sarge Natasha N3221  
   Sarge L1033  
   Lady Sarge J9173

CE	BW	WW	YW	MCE	Milk	MWW	Stay
3	8.0	73	109	5	19	56	23
DOC	CW	YG	Marb	BF	REA	API	TI
7.1	46.0	-.16	.01	-.060	.53	96	59

**Lot 18A: A3018**

BD: 3-30-13 • BW: 64 • Black Heifer • Sire: SS Ebonys Grandmaster



GCF Mr. Amigo



ASA#2619378  
BD: 2-1-11  
Tattoo: Y1073  
Adj BW: 79  
Adj WW: N/A

### Lady Sarge Y1073

Red Dbl Polled Purebred

GCF Mr. Amigo                      CNS Dream On L186  
Lady Sarge W9141                  GCF Miss MT-Zel  
   Sarge Premium S6079  
   Lady Sarge M2232

CE	BW	WW	YW	MCE	Milk	MWW	Stay
14	.2	56	71	8	15	42	19
DOC	CW	YG	Marb	BF	REA	API	TI
9.1	11.2	-.36	.13	-.070	.64	115	63

A.I. Sire: SS Ebonys Grandmaster on 7-7-12



### Lady Sarge Y1068

Black Dbl Polled Purebred

ASA#2619376  
BD: 1-28-11  
Tattoo: Y1068  
Adj BW: 80  
Adj WW: N/A

BMR Explorer                      Westfall Voyager 721P  
Triple C Cry Baby P031              WW Miss My Dream 429R  
   HC Power Drive 88H  
   HS tear Drop J27

CE	BW	WW	YW	MCE	Milk	MWW	Stay
9	1.0	51	70	8	27	52	21
DOC	CW	YG	Marb	BF	REA	API	TI
4.5	12.7	-.26	.04	-.060	.42	106	57

Pasture Sire: Sarge Y1047 from 7-23 to 10-19-12



### Lady Sarge Y1079

Black Dbl Polled 3/4 SM 1/4 CS

ASA#2619379  
BD: 2-3-11  
Tattoo: Y1079  
Adj BW: 80  
Adj WW: N/A

Sarge Silverbullet U8031      Triple C Invasion R47K  
Miss Sarge R5355                  NJC SVF Love Me Dont U  
   Sarges Napoleon N3219  
   11

CE	BW	WW	YW	MCE	Milk	MWW	Stay*
6	1.8	54	77	7	26	53	
DOC	CW	YG	Marb	BF	REA	API	TI
6.4	17.6	-.28	.04	-.070	.48	97	58

**Lot 21A: A3136**

BD: 5-6-13 • BW: 75 • Black Heifer • Sire: Sarge Y1047





**Y1204**  
**Red Dbl Polled Purebred**

CE	BW	WW	YW	MCE	Milk	MWW	Stay
14	.3	67	93	6	29	62	22
DOC	CW	YG	Marb	BF	REA	API	TI
13.1	24.9	-.24	.32	-.051	.66	138	76

ASA#2710394  
BD: 3-19-11  
Tattoo: Y1204  
Adj BW: ET  
Adj WW: N/A

WS Beef Maker R13      Hooks Shear Force 38K  
Lady Sarge Perdita P4163      DCR Ms. Ribeye N72  
DSR Red Viper E4  
Lady Sarge K133  
Pasture Sire: Sarge Y1047 from 7-23 to 10-19-12

This first calf heifer is an embryo out of one of our proven donors, Lady Sarge Perdita, and Beef Maker. This embryo heifer brings with it the kind of genetics that improve herds and an age that guarantee many more years of productive calving.



**Y1202**  
**Black Dbl Polled 1/2 SM 1/2 CS**

GW Lucky Man 644N      GW Lucky Charm 665K  
T7258      GW Miss 600U 964J  
Black Irish Kansas  
SRS P37

ASA#2632722  
BD: 3-18-11  
Tattoo: Y1202  
Adj BW: 80  
Adj WW: N/A

CE	BW	WW	YW	MCE	Milk	MWW	Stay
13	.6	66	104	13	25	58	21
DOC	CW	YG	Marb	BF	REA	API	TI
12.5	32.8	-.23	.17	-.067	.61	127	71

**Lot 27A: A3006**  
BD: 3-26-13 • BW: 63 • Black Heifer • Sire: SP The Answer 813



**Lady Sarge Y1142**  
**Red Dbl Polled Purebred**



**Lady Sarge Y1161**  
**Black Dbl Polled 3/4 SM 1/4 AN**

ASA#2710398  
BD: 2-24-11  
Tattoo: Y1142  
Adj BW: 81  
Adj WW: N/A

Sarge Silverbullet U8031      Triple C Invasion R47K  
Lady Sarge M2199      NJC SVF Love Me Dont U  
GFI HF Design G11  
Lady sarge F6199

CE	BW	WW	YW	MCE	Milk	MWW	Stay
7	2.7	53	75	9	24	51	23
DOC	CW	YG	Marb	BF	REA	API	TI
8.8	18.3	-.25	-.02	-.050	.53	80	50

**Lot 28A: A3017**  
BD: 3-30-13 • BW: 68 • Black Heifer • Sire: HTP SVF In Dew Time

ASA#2619402  
BD: 3-9-11  
Tattoo: Y1161  
Adj BW: 77  
Adj WW: N/A

SRS/Sarge Fortress T7240      LRS Preferred Stock 370C  
Miss Sarge R5111      SRS G733 Glimmer  
TNT Cruzar K265  
NERICC Princess

CE	BW	WW	YW	MCE	Milk	MWW	Stay
8	.9	62	89	8	16	46	21*
DOC	CW	YG	Marb	BF	REA	API	TI
6.9	23.7	-.25	.08	-.060	.56	100	61

**Lot 29A: A3086**  
BD: 5-1-13 • BW: 73 • Black Bull • Sire: Sarge Y1047



## Lady Sarge Y1117

**Black Dbl Polled Purebred**

ASA#2619390  
BD: 2-14-11  
Tattoo: Y1117  
Adj BW: 72  
Adj WW: N/A

BMR Explorer Westfall Voyager 721P  
Lady Sarge Hummer T7007 WW Miss My Dream 429R  
HC Hummer 12M  
Lady Sarge K128

CE	BW	WW	YW	MCE	Milk	MWW	Stay
12	-.9	55	72	11	24	51	17
DOC	CW	YG	Marb	BF	REA	API	TI
3.1	10.8	-.28	.01	-.060	.46	104	61

Pasture Sire: Sarge Y1047 from 7-23 to 10-19-12

BMR Explorer



## Red Sandy Sarge Y1172

**Red Dbl Polled 5/8 SM 3/8 AR**

ASA#2619404  
BD: 3-12-11  
Tattoo: Y1172  
Adj BW: 91  
Adj WW: N/A

WS Beef Maker R13 Hooks Shear Force 38K  
Red Lady Canyon T7242 DCR Ms. Ribeye N72  
BFCK Cherokee Cnyn 4912  
Sandy Sarge N3092

CE	BW	WW	YW	MCE	Milk	MWW	Stay
10	2.7	77	108	5	25	63	*
DOC	CW	YG	Marb	BF	REA	API	TI
12.5	37.0	-.22	.45	-.040	.79	117	76

A.I. Sire: Red Six Mile Sakic 832S on 7-7-12

WS Beef Maker R13



MODEL  
**W**  
FEMALES



## Sandy Sarge W9181

**Red Dbl Polled 1/4 SM 3/4 AR**

ASA#2590188  
BD: 4-13-09  
Tattoo: W9181  
Adj BW: 80  
Adj WW: 658

Red Sarge R5300 GP Catalyst 025  
Red Sandy League T7018 Red Lady Sarge J9006  
LCC Major League A502M  
Lady Sarge Roxxy R5097

Pasture Sire: Red Sarge R5300 from 8-13 to 10-19-12

CE	BW	WW	YW	MCE	Milk	MWW	Stay
6	3.4	69	103	5	17	51	*
DOC	CW	YG	Marb	BF	REA	API	TI
*	35.7	-.01	.27	-.010	.31	93	67

This pair has got a lot of Red Angus in it and is better for it. The dam is a 3/4 blood and is bred to a purebred Red Angus sire. If you're looking to add a little Angus to your herd, this is the pair for you.



**Lady Sarge W9194**  
Black Dbl Polled Purebred

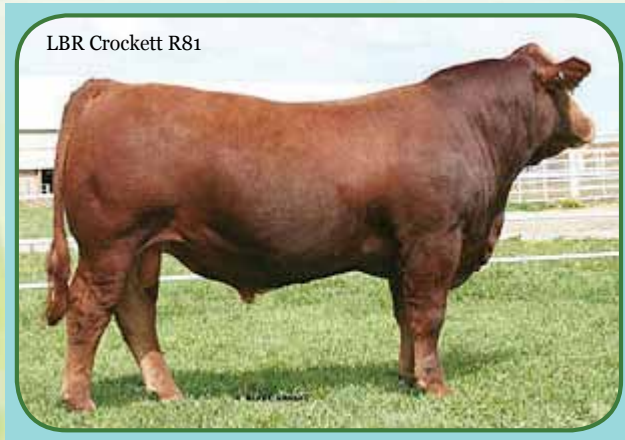
ASA#2524028  
BD: 4-18-09  
Tattoo: W9194  
Adj BW: 80  
Adj WW: 595

Sarge Dream Wave S6046 CNS Dream On L186  
Lady Sarge K248  
Lady Sarge N3007 PVF-BF BF26 Black Joker  
Lady Sarge K257

Pasture Sire: Sarge Silverbullet U8031 from 8-14 to 10-19-12

CE	BW	WW	YW	MCE	Milk	MWW	Stay
10	2.1	67	97	9	23	56	24
DOC	CW	YG	Marb	BF	REA	API	TI
5.2	30.1	-25	-.02	-.050	.66	114	64

Look no further for a sturdy and solid Simmental pair. The dam is a proven but young purebred and she was bred to our own homozygous black purebred sire, Silverbullet.



**Lady Sarge Crockett W9028**  
Black Dbl Polled Purebred

ASA#2498873  
BD: 1-10-09  
Tattoo: W9028  
Adj BW: 71  
Adj WW: N/A

LBR Crockett R81 KenCo/MF Powerline 204L  
Lady Sarge P4173 LBR Night Dream M22  
Sarge K134  
Lady sarge K64

CE	BW	WW	YW	MCE	Milk	MWW	Stay
8	3.5	76	111	-1	22	60	22
DOC	CW	YG	Marb	BF	REA	API	TI
13.1	40.0	-.24	.03	-.050	.80	110	69

**Lot 34A: A3073**  
BD: 4-29-13 • BW: 68 • Black Bull • Sire: Hooks Forum 77J



**Lady Sarge W9087**  
Black Dbl Polled Purebred

ASA#2523978  
BD: 2-21-09  
Tattoo: W9087  
Adj BW: 80  
Adj WW: 621

GFI HF Explosion G023 NLC 64Y Tomcat  
ER Miss JB91X 9A  
Lady Sarge F6172 Harts Black Casino B408  
WRR Black Pear

CE	BW	WW	YW	MCE	Milk	MWW	Stay
4	4.0	54	78	3	24	51	19
DOC	CW	YG	Marb	BF	REA	API	TI
7.3	21.3	-.23	-.05	-.040	.55	87	52

**Lot 35A: A3137**  
BD: 5-6-13 • BW: 87 • Black Bull • Sire: Sarge Affirmed W9014



**Lady Sarge W9151**  
Black Dbl Polled Purebred

ASA#2523983  
BD: 3-29-09  
Tattoo: W9151  
Adj BW: 76  
Adj WW: 492

RCC Premium Beef P4007 SRS J914 Preferred Beef  
BH Miss MT 02K  
Lady Sarge R5157 Sarge M2163  
Lady Sarge N3126

CE	BW	WW	YW	MCE	Milk	MWW	Stay
14	-.7	48	69	10	27	51	19
DOC	CW	YG	Marb	BF	REA	API	TI
*	9.7	-.28	.12	-.070	.37	115	61

**Lot 36A: A3127**  
BD: 5-5-13 • BW: 76 • Red Heifer • Sire: Hooks Pacesetter 8P



## Sandy Sarge W9313

**Black Dbl Polled 3/4 SM 1/4 AN**

ASA#2617588 BD: 11-29-09  
Tattoo: W9313 Adj BW: 84 Twin  
Adj WW: N/A

GLS Combination R2 B/R New Frontier 095  
GLS Hostess H16  
Lady Sarge M2096 Sarge K163  
Lady Sarge K133

Here is another nice percentage cow that is bred to our young and impressive half blood In Focus bull.

CE	BW	WW	YW	MCE	Milk	MWW	Stay *
11	.7	62	97	3	15	46	
DOC	CW	YG	Marb	BF	REA	API	TI
9.4	28.7	-.30	.13	-.050	.79	104	64

Pasture Sire: Sarge Macho X0218 from 8-14 to 10-19-12



## Lady Sarge W9248

**Black Dbl Polled Purebred**

ASA#2524037  
BD: 5-25-09  
Tattoo: W9248  
Adj BW: 82  
Adj WW: 692

Sarges Dream CNS Dream On L186  
HS SS Rubys Angel H120  
SRS Radiant R46 HC Hummer 12M  
SRS Hippy

CE	BW	WW	YW	MCE	Milk	MWW	Stay *
11	2.8	85	124	13	14	56	19
DOC	CW	YG	Marb	BF	REA	API	TI
7.7	47	-.17	.16	-.060	.58	122	77

Another perfect Simmental pair here, with the genetics to improve anyone's herd.

Pasture Sire: Sarge Silverbullet U8031 from 8-14 to 10-19-12



## Lady Sarge W9200

**Black Dbl Polled 1/2 SM 1/2 CS**

ASA#2524018  
BD: 4-19-09  
Tattoo: W9200  
Adj BW: 80  
Adj WW: 618

Sarge R5036 SS Goldmine L42  
Triple C Sweet & Sassy N  
T713 LRS Preferred Stock 370C  
SRS G733 Glimmer

CE	BW	WW	YW	MCE	Milk	MWW	Stay *
11	1.2	62	89	9	24	55	
DOC	CW	YG	Marb	BF	REA	API	TI
9.8	24.2	-.25	.04	-.060	.54	101	59

### Lot 39A: A3040

BD: 4-26-13 • BW: 69 • Red Heifer • Sire: WS Beef Maker R13



## Lady Sarge W9227

**Red Dbl Polled Purebred**

ASA#2524000  
BD: 5-10-09  
Tattoo: W9227  
Adj BW: 73  
Adj WW: 680

Sarges Dream CNS Dream On L186  
HS SS Rubys Angel H120  
Lady Sarge N3245 DSR Red Viper E4  
Lady Sarge K133

CE	BW	WW	YW	MCE	Milk	MWW	Stay *
11	2.4	80	111	5	18	58	21
DOC	CW	YG	Marb	BF	REA	API	TI
*	38.5	-.19	.12	-.070	.49	122	74

Pasture Sire: Red Sarge R5300 from 8-13 to 10-19-12



## Lady Sarge W9286

**Black Dbl Polled 5/8 SM 1/4 AR 1/8 CS**

ASA#2617581  
BD: 10-14-09  
Tattoo: W9286  
Adj BW: 83  
Adj WW: N/A

Sarge Major League T7003 LCC Major League A502M  
Sandy Sarge P4030  
Lady Sarge M2282 GFI HF Design G11  
Sarges Lady J9079

CE	BW	WW	YW	MCE	Milk	MWW	Stay *
6	4.3	80	117	6	22	62	
DOC	CW	YG	Marb	BF	REA	API	TI
7.4	45.1	-.14	.12	-.050	.50	86	67

### Lot 41A: A3034

BD: 4-24-13 • BW: 57 • Black Heifer • Sire: Hooks Forum 77J



Lot  
42

**Lady Sarge Josie U8270**  
*Black Dbl Polled Purebred*

ASA#2498876  
BD: 11-24-08  
Tattoo: U8270  
Adj BW: 75 ET  
Adj WW: N/A

Hooks Pacesetter 8P      Hooks Shear Force 38K  
Hooks Meah 22M  
GFI Josie L24              GFI Black Classic H160  
RIV Blk Josie 43B 755G

**Lot 42A: A3104**  
BD: 5-3-13 • BW: 73 • Black Heifer • Sire: HTP SVF In Dew Time

CE	BW	WW	YW	MCE	Milk	MWW	Stay
11	1.2	60	90	11	19	49	19
DOC	CW	YG	Marb	BF	REA	API	TI
12.4	25.0	-.23	.05	-.040	.66	109	63

Again, the genetics of this dam will be sure to impress any cattleman. With both the proven donor, L24, and the top sire, Pacesetter, she's got genetics to spare. With In Dew Time for the sire, her calf will be surrounded by the top earning Simmental genetics.



Lot  
43

**Lady Sarge Pacesetter U8041**  
*Red Dbl Polled 3/4 SM 1/4 AR*

ASA#2441323  
BD: 1-24-08  
Tattoo: U8041  
Adj BW: 91  
Adj WW: N/A

Hooks Pacesetter 8P      Hooks Shear Force 38K  
Hooks Meah 22M  
Miss Sarge S6115        Sarge N3062  
J9002

CE	BW	WW	YW	MCE	Milk	MWW	Stay*
9	2.4	59	88	6	14	43	
DOC	CW	YG	Marb	BF	REA	API	TI
9.1	25.1	-.28	.04	-.050	.75	93	57

Here is a three quarter Simmental, one quarter Red Angus red cow that has both Shear Force and Pacesetter on her pedigree. She is bred to In Dew Time, currently one of the hottest selling Simmental bulls and her calf will show the reason why. This would be a great pair to take home.

**Lot 43A: A3125**  
BD: 5-4-13 • BW: 66 • Black Heifer • Sire: HTP SVF In Dew Time

Lot  
44

**Lady Sarge Tasha U8026**  
*Black Dbl Polled Purebred*

ASA#2441387  
BD: 1-4-08  
Tattoo: U8026  
Adj BW: 83 ET  
Adj WW: N/A

Triple C Invasion R47K      SRS J914 Preferred Beef  
Hooks Karrie 47K  
Lady Sarge Natasha N3221      HC Power Drive 88H  
HS SS Rubys Angel H120

Pasture Sire: Sarge Silverbullet U8031 from 8-14-12 to 10-19-12

CE	BW	WW	YW	MCE	Milk	MWW	Stay
8	2.2	54	81	8	14	41	24
DOC	CW	YG	Marb	BF	REA	API	TI
10.0	20.8	-.31	.14	-.050	.73	117	59



Lot  
45

**Lady Sarge U8217**  
*Red Dbl Polled Purebred*

ASA#2617571  
BD: 6-22-08  
Tattoo: U8217  
Adj BW: 74  
Adj WW: N/A

RCC Premium Beef P4007 SRS J914 Preferred Beef  
BH Miss MT 02K  
Lady Sarge M2050 ER Black Cisco 532C  
Lady Sarge J9046  
Pasture Sire: Red Sarge R5300 from 8-13 to 10-19-12

CE	BW	WW	YW	MCE	Milk	MWW	Stay
13	-.4	53	74	11	21	48	21
DOC	CW	YG	Marb	BF	REA	API	TI
6.4	14.2	-.27	.06	-.050	.52	115	60

Keep an eye out for this pair. This dam is a well built cow but her calf will be even more impressive. It will make for an awesome SimAngus half blood combination.

Lot  
46

**Lady Sarge U8114**  
*Black Dbl Polled Purebred*

ASA#2441319  
BD: 3-25-08  
Tattoo: U8114  
Adj BW: 78  
Adj WW: N/A

Sarge N3037 PVF-BF BF26 Black Joker  
Lady Sarge K257  
Lady Sarge M2142 GFI HF Design G11  
Lady Sarge H8133

CE	BW	WW	YW	MCE	Milk	MWW	Stay
6	3.0	62	96	6	26	57	24
DOC	CW	YG	Marb	BF	REA	API	TI
5.5	31.2	-.27	-.11	-.050	.75	101	58

Here is a fancy, great uddered purebred female. This dam is sure to produce either a heifer that is worth retaining or a powerful bull that will be a top earner.

Pasture Sire: Sarge Fortress X0034 from 8-14 to 10-19-12



Lot  
47

**Miss Sandy Sarge U8198**  
*Black Dbl Polled 1/2 SM 1/4 MX 1/4 AR*

ASA#2498992  
BD: 6-1-08  
Tattoo: U8198  
Adj BW: 71  
Adj WW: N/A

Sarge Remington R5013 KenCo/MF Powerline 204L  
GFI Josie L24  
Miss Sarge P4053 H8101

CE	BW	WW	YW	MCE	Milk	MWW	Stay
9	-.8	47	66	8	21	45	*
DOC	CW	YG	Marb	BF	REA	API	TI
*	7.7	-.39	.02	-.070	.68	93	52

A nice black Simmental influenced cow here that has proven herself by weaning strong calves and maintaining great body condition.

Pasture Sire: X0296 from 8-14 to 10-19-12





MODEL  
**T**  
FEMALES

Lot  
**48**

**Sandy League T7073**  
Black Brockle Dbl Polled 1/2 SM 1/2 AR

LCC Major League A502M BFCK Cherokee Cyn 4912  
Lady Sarge P4157 KRN Rebas Robin  
BDV Sarge 34M  
WRR Black Pear

ASA#2411227  
BD: 2-24-07  
Tattoo: T7073  
Adj BW: 92  
Adj WW: 646

**Lot 48A: A3044**

BD: 4-27-13 • BW: 72 • Red Baldy Heifer • Sire: SVF/NJC Built Right N48

CE	BW	WW	YW	MCE	Milk	MWW	Stay
5	4.7	80	111	-4	23	63	*
DOC	CW	YG	Marb	BF	REA	API	TI
10.6	41.5	-0.06	.24	-0.030	.39	76	68

This ultra fancy, ultra productive half blood dam is one to pay attention to. She is half Red Angus with a perfect mixture of the two breeds. This cow is bred to the Built Right sire who stands by his name. Her red, white faced heifer is sweet and is sure to make a great addition to any herd.



Lot  
**49**

**Lady Sarge T7221**  
Red Polled 1/2 SM 1/2 AR

ASA#2411207  
BD: 5-19-07  
Tattoo: T7221  
Adj BW: 76  
Adj WW: 809

Sarge M2265 3C Full Figures C288 Blk  
Lady Sarge H8249

G7199

CE	BW	WW	YW	MCE	Milk	MWW	Stay
8	3.0	79	100	-7	15	54	*
DOC	CW	YG	Marb	BF	REA	API	TI
*	31.9	-0.03	.24	-0.030	.19	83	70

This SimAngus half blood dam is a beautiful red cow that raises heavy calves. She's been bred back to Cherokee Canyon, A purebred Red Angus who's sure to impress. This calf will have all the Simmental weight and frame while hitting the ground with vigor and purpose.

A.I. Sire: BFCK Cherokee Cyn 4912 on 7-21-12

Lot  
**50**

**Lady Sarge Natasha T7008**  
Black Dbl Polled Purebred

GCF First Dream P13 CNS Dream On L186  
Lady Sarge Natasha N3221 BH First Glance 88H  
HC Power Drive 88H  
HS SS Rubys Angel H120

ASA#2411215  
BD: 1-7-07  
Tattoo: T7008  
Adj BW: 78 ET  
Adj WW: 532

CE	BW	WW	YW	MCE	Milk	MWW	Stay
9	2.9	63	92	8	11	42	24
DOC	CW	YG	Marb	BF	REA	API	TI
10.3	28.2	-0.29	.09	-0.060	.72	117	62

This pretty, purebred Simmental dam is a combination of perfect mating. She is an embryo cow from our proven donor, N3221. This dam is definitely at the top of the breed across the board. Besides passing on great genetics to all her offspring, she does an amazing job of raising those offspring.

Pasture Sire: Sarge Fortress X0034 from 8-14 to 10-19-12

Lot  
**51**

**Lady Sarge T7132**  
Red Dbl Polled Purebred

ASA#2411236  
BD: 3-27-07  
Tattoo: T7132  
Adj BW: 88  
Adj WW: 691

Sarge P4160 GFI Magnum K52  
Lady Sarge K161 PTL Absolute Red E434  
GFI HF Design G11  
Lady Sarge G7142

CE	BW	WW	YW	MCE	Milk	MWW	Stay
7	3.5	63	89	8	26	58	19
DOC	CW	YG	Marb	BF	REA	API	TI
6.2	27.0	-0.22	-0.01	-0.060	.45	96	60

Pasture Sire: Red Sarge R5300 from 8-13 to 10-19-12



Lot  
52

### Lady Sarge PRF Josie T7078

**Black Dbl Polled Purebred**

ASA#2411176  
BD: 2-28-07  
Tattoo: T7078  
Adj BW: 78 ET  
Adj WW: 537

SRS J914 Preferred Beef LRS Preferred Stock 370C  
SRS G733 Glimmer  
GFI Josie L24 GFI Black Classic H160  
RIV Blk Josie 43B 755G  
A.I. Sire: Hooks Forum 77J on 7-21-12

CE	BW	WW	YW	MCE	Milk	MWW	Stay
11	1.0	57	84	11	20	48	20
DOC	CW	YG	Marb	BF	REA	API	TI
8.7	21.0	-17	.18	-0.040	.41	116	64

Here is yet another pair to pay attention to. This dam is an embryo dam out of one of our favorite donor dams and Preferred Beef. This cow's genetic makeup is one that should impress any cattleman, and her calf's will do the same. Bred to Hooks Forum, this calf will be sure to hit the ground with lots of vigor and with a mom like this, wean at a heavy weight.

Lot  
53

### Lady Sarge Goldrush T7299

**Red Dbl Polled Purebred**

ASA#2428322  
BD: 9-23-07  
Tattoo: T7299  
Adj BW: N/A  
Adj WW: 604

SS Goldrush MV Red Light 406  
STF Equarta  
Lady Sarge R5157 Sarge M2163  
Lady Sarge N3126

CE	BW	WW	YW	MCE	Milk	MWW	Stay
14	.4	64	91	12	20	51	13
DOC	CW	YG	Marb	BF	REA	API	TI
*	24.2	-0.7	.13	-0.060	.00	106	67

T7299 is the epitome of what a Simmental cow stands for. She has a perfect frame, friendly attitude and kind, beautiful eye. Her genetics along with her attitude make her the perfect type to expand your herd with. Her calf will be a Simmental dream that will wean at a heavy weight.



Lot 53A: A3132 BD: 5-5-13 • BW: 77 • Red Heifer • Sire: NLC Good A Nuff 33G

Lot  
54

### Lady Sarge T7216

**Red Polled Purebred**

ASA#2419760  
BD: 5-17-07  
Tattoo: T7216  
Adj BW: 78  
Adj WW: 561

RCC Premium Beef P4007 SRS J914 Preferred Beef  
BH Miss MT 02K  
Lady Sarge R5330 Sarge M2265  
Miss Sarge M2189

CE	BW	WW	YW	MCE	Milk	MWW	Stay
15	-.3	53	71	8	19	45	20
DOC	CW	YG	Marb	BF	REA	API	TI
8.8	11.2	-.27	.17	-.060	.46	121	63

Lot 54A: A3084

BD: 4-30-13 • BW: 78 • Red Heifer • Sire: NLC Good A Nuff 33G

Lot  
55

### Lady Sarge Abovepar T7245

**Black Dbl Polled Purebred**

ASA#2428300  
BD: 8-17-07  
Tattoo: T7245  
Adj BW: N/A  
Adj WW: 484

Brooks Above Par Ellingson Black Perfector  
STF Rebeca  
RCC/TCF Real Sweet CCR Cadillac  
Triple C Sweetheart B397

CE	BW	WW	YW	MCE	Milk	MWW	Stay
11	1.0	49	74	2	10	35	16
DOC	CW	YG	Marb	BF	REA	API	TI
10.6	14.9	-.22	-.02	-.060	.28	94	54

Lot 55A: A3043

BD: 4-27-13 • BW: 78 • Black Bull • Sire: Hooks Forum 77J



ASA#2428312  
BD: 9-2-07  
Tattoo: T7277  
Adj BW: N/A  
Adj WW: 429

**Lady Sarge Venom T7277**  
*Black Dbl Polled Purebred*

KSU Venom 101M      WLE Power Stroke  
Miss Kansas K 11G  
KS Debbie N14      Brooks Above Par  
Miss Preferred Playmate 52J  
Pasture Sire: Sarge Fortress X0034 from 8-14 to 10-19-12

CE	BW	WW	YW	MCE	Milk	MWW	Stay
10	1.8	45	68	9	20	42	19
DOC	CW	YG	Marb	BF	REA	API	TI
11.5	12.8	-.35	-.14	-.080	.55	92	48

Large Sarge Venom T7277 will produce money making calves no matter what she is bred to. She will wean a heavy valf with a good attitude.



ASA#2617563  
BD: 8-23-07  
Tattoo: T7260  
Adj BW: ET  
Adj WW: 541

**Lady Sarge T7260**  
*Black Dbl Polled Purebred*

PVF-SSH 1L10 Liberty      GW Lucky Dice 187H  
TJ 30J Georgia 40G  
Lady Sarge K257      WHF Desperado 212G  
WRR Black Juniper

Pasture Sire: Sarge Fortress X0034 from 8-14 to 10-19-12

CE	BW	WW	YW	MCE	Milk	MWW	Stay
6	4.1	73	115	7	20	56	17
DOC	CW	YG	Marb	BF	REA	API	TI
6.6	43.7	-.24	.14	-.050	.78	104	69



## Lady Sarge Hummer S6261

**Black Dbl Polled Purebred**

ASA#2428276  
BD: 8-27-06  
Tattoo: S6261  
Adj BW: 80  
Adj WW: 523

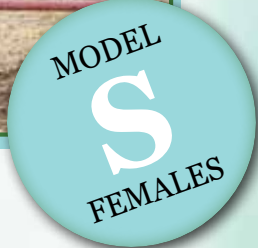
HC Hummer 12M

WLE Power Stroke  
LBR Destinys Dream K830  
KenCo/MF Powerline 204L  
Lady Sarge K257

CE	BW	WW	YW	MCE	Milk	MWW	Stay
11	.7	61	94	8	25	55	22
DOC	CW	YG	Marb	BF	REA	API	TI
9.4	26.4	-.33	.09	-.060	.84	120	66

This productive dam is in the prime of her life. Her calves always wean at their highest and she is bred to an impressive, up and coming sire. Our herd bull Xo296 is an embryo bull out of one of our most proven donor dams, Lady Sarge Natasha N3221 (HC Power Drive x HS SS Ruby Angel H120) and the ever popular Grandmaster. This pair will be exciting to watch.

Pasture Sire: Xo296 from 8-14 to 10-19-12



## Lady Sarge S6198

**Black Blaze Dbl Polled Purebred**

ASA#2391168  
BD: 4-3-06  
Tattoo: S6198  
Adj BW: 100  
Adj WW: 547

Sarge N3025

OMF Long Cut J6  
Lady Sarge H8089  
GFI HF Design G11  
Leachman Blk Baldy D7411

CE	BW	WW	YW	MCE	Milk	MWW	Stay
5	3.7	66	96	9	32	65	19
DOC	CW	YG	Marb	BF	REA	API	TI
*	32.1	-.20	.04	-.070	.40	99	63

Here's a nice black purebred Simmental cow with a stunning white blaze that is a mixture of both power and grace. She has proven herself throughout the years by producing money making calves and is bred to an up and coming sire that is sure to leave a legacy behind. Sarge Fortress is a black white faced purebred Simmental bull whose numbers don't lie.

Pasture Sire: Sarge Fortress Xo034 from 8-14 to 10-19-12



## Lady Sarge S6311

**Red Dbl Polled Purebred**

ASA#2428287  
BD: 9-29-06  
Tattoo: S6311  
Adj BW: 80  
Adj WW: 494

Sarge L1033

GFI HF Design G11  
Lady Sarge D4104  
Harts Black Casino B408  
WRR Black Pear

Pasture Sire: Red Sarge R5300 from 8-13 to 10-19-12

CE	BW	WW	YW	MCE	Milk	MWW	Stay
5	3.0	51	80	10	34	59	27
DOC	CW	YG	Marb	BF	REA	API	TI
8.2	21.7	-.22	-.05	-.050	.47	106	53



## Lady Sarge Bk Ruby R5154

**Black Dbl Polled Purebred**

ASA#2316748  
BD: 3-23-05  
Tattoo: R5154  
Adj BW: 108 ET  
Adj WW: 758

GFI Magnum K52

Ellingson Black Perfection  
RIV Blk Josie 43B 755G  
BS Mr. Arapahoe 811A  
HF/GFI Ruby Red 33E

Pasture Sire: Xo296 from 8-14 to 10-19-12

CE	BW	WW	YW	MCE	Milk	MWW	Stay
4	4.8	68	91	8	29	63	24
DOC	CW	YG	Marb	BF	REA	API	TI
8.3	30.2	-.20	-.01	-.060	.42	102	60



## Lady Sarge R5194

**Black Polled Purebred**

ASA#2316767  
BD: 4-7-05  
Tattoo: R5194  
Adj BW: 80  
Adj WW: 676

Hooks Forum 77J

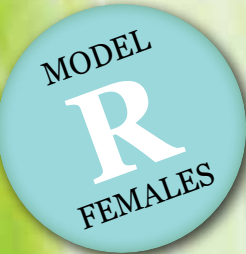
Nichols Blk Destiny D12  
Hooks Applause 59F  
DSR Red Viper E4  
Lady sarge E5199

Lady Sarge G7073

Lot 62A: A33122

BD: 5-4-13 • BW: 89 • Black Bull • Sire: Hooks Forum 77J SS Ebonys Grandmaster

CE	BW	WW	YW	MCE	Milk	MWW	Stay
13	.0	58	84	11	30	59	19
DOC	CW	YG	Marb	BF	REA	API	TI
*	19.3	-.26	-.01	-.060	.46	108	63





**R5088**

**Black Polled Purebred**

ASA#2710393  
BD: 2-20-05  
Tattoo: R5088  
Adj BW: 112  
Adj WW: N/A

Sarge N3064      Ellingson Black Perfector  
Lady Sarge J9272      Lady Sarge K144  
   GFI HF Design G11  
   Lady Sarge E5206

CE	BW	WW	YW	MCE	Milk	MWW	Stay
5	6.7	66	100	6	26	59	15
DOC	CW	YG	Marb	BF	REA	API	TI
7.3	39.2	-.15	.01	-.060	.45	84	58

Another purebred black Simmental dam that's sure to please. This dam has a great attitude and will have a sweet purebred calf at her side for the summer from one of our most proven sires, Silverbullet.

Pasture Sire: Sarge Silverbullet U8031 from 8-14 to 10-19-12



**Lady Sarge R5224**

**Red Dbl Polled Purebred**

ASA#2316777  
BD: 4-13-05  
Tattoo: R5224  
Adj BW: 88  
Adj WW: 655

Sarge N3062      KenCo/MF Powerline 204L  
Lady Sarge J9114      Lady Sarge K1369  
   GFI HF Explosion G023  
   Lady Sarge F6251

CE	BW	WW	YW	MCE	Milk	MWW	Stay
7	1.8	64	94	4	18	50	19
DOC	CW	YG	Marb	BF	REA	API	TI
8.3	27.8	-.28	-.14	-.060	.70	93	59

Lot 64A: A3150

BD: 5-6-13 • BW 81 • Red Bull • Sire: Red Iron T720



**Lady Sarge R5273**

**Black Dbl Polled Purebred**

ASA#2316794  
BD: 5-2-05  
Tattoo: R5273  
Adj BW: 60 Twin  
Adj WW: 469

Sarge M2025      ER Black Cisco 532C  
Lady Sarge K257      Lady Sarge K128  
   WHF Desperado 212G  
   WRR Black Juniper

CE	BW	WW	YW	MCE	Milk	MWW	Stay
10	1.8	69	98	9	20	55	23
DOC	CW	YG	Marb	BF	REA	API	TI
4.6	30.2	-.25	-.05	-.060	.59	113	65

Pasture Sire: X0296 from 8-14 to 10-19-12



**Lady Sarge R5316**

**Red Dbl Polled Purebred**

ASA#2316802  
BD: 9-5-05  
Tattoo: R5316  
Adj BW: 74  
Adj WW: N/A

Sarges Napoleon N3219      OMF Long Cut J6  
Lady Sarge K145      Lady Sarge K248  
   WHF Desperado 212G  
   Miss Sarge A86

CE	BW	WW	YW	MCE	Milk	MWW	Stay
6	3.5	79	110	8	17	56	14
DOC	CW	YG	Marb	BF	REA	API	TI
7.5	39.5	-.16	-.07	-.080	.31	88	66

Lot 66A: A3142

BD: 5-6-13 • BW: 78 • Black Bull • Sire: Mr. NLC Upgrade U8676

NOTE: All bred females will have calf at side by sale day. Additional information available at [www.ebersale.com](http://www.ebersale.com)



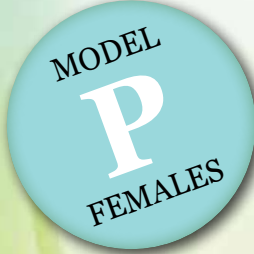
**Miss Sarge R5144**  
**Red Dbl Polled 3/4 SM 1/4 AR**

CE	BW	WW	YW	MCE	Milk	MWW	Stay
3	6.5	64	96	6	29	60	*
DOC	CW	YG	Marb	BF	REA	API	TI
*	36.1	-.05	-.01	-.050	.16	67	47

ASA#2316744  
BD: 3-21-05  
Tattoo: R5144  
Adj BW: 113  
Adj WW: 487

Sarge N3008      GFI HF Explosion G023  
Lady Sarge H8011  
Sandy Sarge E5072      BUF CRK Hobo 1961  
Lady Sarge C3257  
Pasture Sire: Red Sarge R5300 from 8-13 to 10-19-12

This three quarter Simmental, one quarter Red Angus dam is the perfect mixture of the two breeds. She's stout enough to raise a money making calf while at the same time producing vigorous calves that are sure to be on their feet as soon as they hit the ground. She is bred to R5300, a top producing purebred Red Angus sire that has been proven time and time again. This is a pair to pay attention to!



**Lady Sarge P4122**  
**Black Dbl Polled Purebred**

ASA#2261370  
BD: 4-6-04  
Tattoo: P4122  
Adj BW: 72  
Adj WW: 750

KenCo/MF Powerline      HC Power Drive 88H  
204L      SAFN Glamour 11J  
Lady Sarge K257      WHF Desperado 212G  
WRR Black Juniper

CE	BW	WW	YW	MCE	Milk	MWW	Stay
7	1.6	65	98	1	18	50	20
DOC	CW	YG	Marb	BF	REA	API	TI
8.8	30.2	-.35	-.08	-.060	.95	101	61

Pasture Sire: Sarge Fortress X0034 from 8-14 to 10-19-12



**Lady Sarge P4136**  
**Black Polled Purebred**

ASA#2261378  
BD: 4-7-04  
Tattoo: P4136  
Adj BW: 76  
Adj WW: 622

Sarge K134      BS Mr. Arapahoe 811A  
HF/GFI Ruby Red 33E  
Miss Sarge Z296      Sarge U6263  
Sandy Sarge K827

CE	BW	WW	YW	MCE	Milk	MWW	Stay
7	2.2	45	63	10	39	61	15
DOC	CW	YG	Marb	BF	REA	API	TI
*	10.1	-.28	-.04	-.070	.41	82	51

**Lot 69A: A3064**  
BD: 4-28-13 • BW: 72 • Black Heifer • Sire: GFI HF Design G11



**Lady Sarge Penelope P4137**  
**Red Dbl Polled Purebred**

ASA#2261379  
BD: 4-7-04  
Tattoo: P4137  
Adj BW: 80 ET  
Adj WW: 746

OMF Long Cut J6      Meyers Red Top  
Lady Sarge K248      OMF Sadevce G-26  
GFI HF Explosion G023  
Lady Sarge H8011

CE	BW	WW	YW	MCE	Milk	MWW	Stay
1	5.9	81	114	7	24	65	16
DOC	CW	YG	Marb	BF	REA	API	TI
8.1	45.0	-.11	-.01	-.080	.18	86	66

A.I. Sire: THSF Freedom 330N on 7-22-12



**Lady Sarge P4166**  
**Black Dbl Polled Purebred**

ASA#2328807  
BD: 4-12-04  
Tattoo: P4166  
Adj BW: 76  
Adj WW: 637

Sarge K134      BS Mr. Arapahoe 811A  
Lady Sarge K144      HF/GFI Ruby Red 33E  
BS Mr. Arapahoe 811A  
HF/GFI Ruby Red 33E

CE	BW	WW	YW	MCE	Milk	MWW	Stay
12	.5	54	70	8	29	56	22
DOC	CW	YG	Marb	BF	REA	API	TI
10.2	11.5	-.34	-.06	-.060	.62	108	58

**Lot 71A: A3065**  
BD: 4-28-13 • BW: 71 • Red Bull • Sire: Hooks Forum 77J

## Lady Sarge P4174

Red Polled Purebred



ASA#2261398  
BD: 4-14-04  
Tattoo: P4174  
Adj BW: 78  
Adj WW: 565

NLC Good A Nuff 33G

NLC 64Y Tomcat

Lady Sarge G7185

NLC A03 Avaline

Sarge E5144

Lady Sarge Y9197

CE	BW	WW	YW	MCE	Milk	MWW	Stay
9	2.2	44	62	8	26	48	16
DOC	CW	YG	Marb	BF	REA	API	TI
6.9	10.2	-.22	-.23	-.070	.19	76	45

If you are looking for a purebred Simmental that's both red and fancy, here she is. She's a stunning dam that will grab the attention of everyone. Her sire, NLC Good A Nuff 33G, is known for producing great females. She is bred to Long Cut, another awesome purebred Simmental. This pair is sure to be a great addition to your herd.

Lot 72A: A3156

BD: 5-7-13 • BW: 78 • Red Bull • Sire: OMG Long Cut J6



## Sandy Sarge P4236

Black Dbl Polled 1/2 SM 1/2 AN

ASA#2261420  
BD: 8-29-04  
Tattoo: P4236  
Adj BW: 72  
Adj WW: N/A

TNT Cruzler K265

TNT Titanic H110

3C Crocus F592 B

NERICC Princess

A.I. Sire: GFI HF Design G11 on 7-21-12

CE	BW	WW	YW	MCE	Milk	MWW	Stay
5	3.7	64	90	8	11	43	*
DOC	CW	YG	Marb	BF	REA	API	TI
*	28.1	-.27	.12	-.060	.61	85	57

Here is an elite set of **OPEN FEMALES** that are sired by breed leading sires and out of top producing cows. They are ready to breed to the bull of your choice.



## Z2036

Red Dbl Polled Purebred

ASA#2684357  
BD: 1-6-12  
Tattoo: Z2036  
Adj BW: 76  
Adj WW: N/A

Hooks Shear Force 38K

Nichols Legacy G151

C&D Tracy

Lady Sarge Lucky S6258

PVF-SSH 1L10 Liberty

329N

CE	BW	WW	YW	MCE	Milk	MWW	Stay
15	.8	67	103	11	26	60	23
DOC	CW	YG	Marb	BF	REA	API	TI
11.8	32.1	-.32	.35	-.044	1.03	142	77

For those of you looking for red cattle with genetics that will improve your herd, here is an open heifer to pay attention to. She is the daughter of Hooks Shear Force and will make someone a great replacement heifer.





### Z2039

**Black Dbl Polled Purebred**

ASA#2684360  
BD: 1-8-12  
Tattoo: Z2039  
Adj BW: 79  
Adj WW: N/A

Mr. NLC Upgrade U8676 Ellingson Legacy M229  
329N Ms. NLC Mojo S6119 B  
GW Lucky Charm 665K  
GW Miss Pasque 643H

CE	BW	WW	YW	MCE	Milk	MWW	Stay
11	3.3	87	132	11	24	67	*
DOC	CW	YG	Marb	BF	REA	API	TI
11.2	53.1	-.27	.19	-.081	.85	122	79

Mr. NLC Upgrade U8676



### Z2045

**Black Dbl Polled 1/2 SM 1/2 AN**

ASA#2684366  
BD: 1-13-12  
Tattoo: Z2045  
Adj BW: 74  
Adj WW: N/A

SP The Answer 813 S A V Final Answer 0035  
Lady Sarge Natasha T7080 S A Eline Design 648  
CNS Dream On L186  
Lady Sarge Natasha N3221

CE	BW	WW	YW	MCE	Milk	MWW	Stay
16	-.8	63	95	11	18	50	*
DOC	CW	YG	Marb	BF	REA	API	TI
9.3	25.2	-.10	.43	-.015	.50	142	75

SP The Answer 813



### Z2010

**Black Dbl Polled Purebred**

ASA#2684334  
BD: 1-2-12  
Tattoo: Z2010  
Adj BW: 81  
Adj WW: N/A

U8283 Hooks Shear Force 38K  
Lady Sarge Chris S6259  
Lady Sarge N3007 PVF-BF BF26 Black Joker  
Lady Sarge K257

CE	BW	WW	YW	MCE	Milk	MWW	Stay
9	2.2	64	93	9	28	60	24
DOC	CW	YG	Marb	BF	REA	API	TI
10.3	28.6	-.28	.10	-.050	.82	119	65



### Z2023

**Red Dbl Polled Purebred**

ASA#2684345  
BD: 1-4-12  
Tattoo: Z2023  
Adj BW: 69 ET  
Adj WW: N/A

STF Dominance T171 STF Dominique R170  
Lady Sarge Perdita P4163 MMP Kiss This 37L  
DSR Red Viper E4  
Lady Sarge K133

CE	BW	WW	YW	MCE	Milk	MWW	Stay
10	2.1	58	78	7	23	52	17
DOC	CW	YG	Marb	BF	REA	API	TI
6.1	19.3	-.21	.02	-.084	.24	98	59



### Z2038

**Black Polled Purebred**

ASA#2684359  
BD: 1-7-12  
Tattoo: Z2038  
Adj BW: 75  
Adj WW: N/A

U8283 Hooks Shear Force 38K  
Lady Sarge M2259 Lady Sarge Chris S6259  
Grinaltas Extraordinaire  
Sarge Lady F6141

CE	BW	WW	YW	MCE	Milk	MWW	Stay
7	3.5	60	88	1	30	60	16
DOC	CW	YG	Marb	BF	REA	API	TI
10.4	27.4	-.29	.11	-.075	.65	96	62



### Z2059

**Red Polled Purebred**

ASA#2684375  
BD: 1-22-12  
Tattoo: Z2059  
Adj BW: 76 ET  
Adj WW: N/A

STF Dominance T171 STF Dominique R170  
Miss CCF Sheza Looker MMP Kiss This 37L  
SVF/NJC Built Right N48  
SVF Sheza Fantasy N906

CE	BW	WW	YW	MCE	Milk	MWW	Stay
10	2.9	58	84	6	20	49	19
DOC	CW	YG	Marb	BF	REA	API	TI
4.9	24.0	-.22	-.02	-.084	.33	99	57

**We look forward to seeing you at our sale  
on Saturday, May 25th in Pine City, MN!**

**Come early to view our sale offering and visit! Enjoy a  
complimentary meal before the sale!**



**Z2164**  
**Black Polled Purebred**

ASA#2684446 • BD: 2-27-12  
Tattoo: Z2164 • Adj BW: 76 ET  
Adj WW: N/A

GCF Mr. Amigo  
BDV Sabrina 6S13

CNS Dream On L186  
GCF Miss MT-Zel  
Hooks Shear Force 38K  
HF/GFI Ruby Red 33E



Z2164 is an embryo daughter out of Mr. Amigo and Sabrina. You're not going to find genetics better than what is behind this young female.

CE	BW	WW	YW	MCE	Milk	MWW	Stay
14	.5	61	80	9	17	48	22
DOC	CW	YG	Marb	BF	REA	API	TI
12.7	17.9	-.37	.21	-.071	.83	127	68



**Z2073**  
**Black DbL Polled 1/2 SM 1/2 AN**

ASA#2684385  
BD: 1-29-12  
Tattoo: Z2073  
Adj BW: 70  
Adj WW: N/A

SP The Answer 813  
Lady Sarge K80  
S A V Final Answer 0035  
S A Eline Design 648  
NLC Good A Nuff 33G  
Lady Sarge G7191

CE	BW	WW	YW	MCE	Milk	MWW	Stay
15	-.8	60	91	7	19	49	*
DOC	CW	YG	Marb	BF	REA	API	TI
9.4	22.9	-.05	.21	-.020	.29	122	67



**Z2078**  
**Red DbL Polled Purebred**

ASA#2684390  
BD: 1-30-12  
Tattoo: Z2078  
Adj BW: 78 ET  
Adj WW: N/A

Hooks Pacesetter 8P  
329N  
Hooks Shear Force 38K  
Hooks Meah 22M  
GW Lucky Charm 665K  
GW Miss Pasque 643H

CE	BW	WW	YW	MCE	Milk	MWW	Stay
13	2.6	70	107	8	22	57	*
DOC	CW	YG	Marb	BF	REA	API	TI
12.1	37.6	-.21	.01	-.051	.72	108	64



**Z2094**  
**Black DbL Polled Purebred**

ASA#2684400  
BD: 2-5-12  
Tattoo: Z2094  
Adj BW: 76 ET  
Adj WW: N/A

Hooks Pacesetter 8P  
329N  
Hooks Shear Force 38K  
Hooks Meah 22M  
GW Lucky Charm 665K  
GW Miss Pasque 643H

CE	BW	WW	YW	MCE	Milk	MWW	Stay
13	2.6	70	107	8	22	57	*
DOC	CW	YG	Marb	BF	REA	API	TI
12.1	37.6	-.21	.01	-.051	.72	108	64



**Z2146**  
**Black DbL Polled 1/2 SM 1/2 AN**

ASA#2684434  
BD: 2-14-12  
Tattoo: Z2146  
Adj BW: 74  
Adj WW: N/A

SP The Answer 813  
Lady Sarge Willow W9025  
S A V Final Answer 0035  
S A Eline Design 648  
Cott-GFI Fullback 0038N  
GFI Jodi K30

CE	BW	WW	YW	MCE	Milk	MWW	Stay
15	.1	68	102	5	24	58	*
DOC	CW	YG	Marb	BF	REA	API	TI
11.5	30.6	-.03	.39	-.005	.44	129	75



**Z2169**  
**Black DbL Polled 1/2 SM 1/2 AN**

ASA#2708527  
BD: 2-28-12  
Tattoo: Z2169  
Adj BW: 74  
Adj WW: N/A

SP The Answer 813  
Lady Sarge Xo112  
S A V Final Answer 0035  
S A Eline Design 648  
Hearthstone Osage S690  
Lady Sarge S6311

CE	BW	WW	YW	MCE	Milk	MWW	Stay
12	-.2	62	95	9	23	54	*
DOC	CW	YG	Marb	BF	REA	API	TI
9.2	26.3	-.08	.29	-.010	.50	120	69



**Z2285**  
**Black DbL Polled Purebred**

ASA#2684529  
BD: 4-11-12  
Tattoo: Z2285  
Adj BW: 74  
Adj WW: N/A

Sarges Dream  
Lady Sarge T7139  
CNS Dream On L186  
HS SS Rubys Angel H120  
Sarge R5036  
Lady Sarge K121

CE	BW	WW	YW	MCE	Milk	MWW	Stay
12	1.2	69	98	7	15	49	21
DOC	CW	YG	Marb	BF	REA	API	TI
10.2	29.6	-.23	.07	-.069	.56	119	68



**Z2282**

**Black Dbl Polled Purebred Angus**

ASA#2708522  
BD: 4-11-12  
Tattoo: Z2282  
Adj BW: 70  
Adj WW: N/A

BC Lookout 7024      O C C Legend 616L  
Gibbet Hill Mignonne E37  
SS Miss Lead On L54      Connealy Lead On  
S S Miss Amber 1531 A07

CE	BW	WW	YW	MCE	Milk	MWW	Stay
13	-.1	55	95	5	18	45	*
DOC	CW	YG	Marb	BF	REA	API	TI
*	26.9	-.14	.71	-.021	.61	109	67

If you're looking for more Angus genetics for your herd, here is the only purebred Angus heifer on the sale. She is quite the animal and definitely one to pay attention to.



**Z2237**

**Black Dbl Polled Purebred**

ASA#2684495  
BD: 3-26-12  
Tattoo: Z2237  
Adj BW: 70  
Adj WW: N/A

HTP SVF In Dew Time      CNS Dream On L186  
HTP SVF Honeydew  
Lady Sarge T7063      Sarge P4160  
Lady Sarge L1076

CE	BW	WW	YW	MCE	Milk	MWW	Stay
12	1.4	62	85	8	19	50	*
DOC	CW	YG	Marb	BF	REA	API	TI
8.3	21.8	-.17	.20	-.042	.47	117	65

Z2237 is a fancy, black, young heifer out of In Dew Time. She's got the genetics behind her and the look and attitude to match.



**Z2026**

**Red Dbl Polled Purebred**

ASA#2684348  
BD: 1-4-12  
Tattoo: Z2026  
Adj BW: 81 ET  
Adj WW: N/A

STF Dominance T171      STF Dominance R170  
MMP Kiss This 37L  
Lady Sarge Perdita P4163      DSR Red Viper E4  
Lady Sarge K133

CE	BW	WW	YW	MCE	Milk	MWW	Stay
10	2.1	58	78	7	23	52	17
DOC	CW	YG	Marb	BF	REA	API	TI
6.1	19.3	-.21	.02	-.084	.24	98	59



**Z2085**

**Black Dbl Polled 3/4 SM 1/4 AN**

ASA#2684394  
BD: 2-2-12  
Tattoo: Z2085  
Adj BW: 74  
Adj WW: N/A

SS Ebonys Grandmaster      PVF-BF BF26 Black Joker  
SOSF Ebonys Joy L-123  
Sandy Sarge W9058      Mytty In Focus  
Lady Sarge Natasha T7008

CE	BW	WW	YW	MCE	Milk	MWW	Stay
11	.7	56	86	7	21	49	*
DOC	CW	YG	Marb	BF	REA	API	TI
12.6	22.3	-.10	.40	.003	.61	121	67



**Z2308**

**Black Dbl Polled Purebred**

ASA#2684535  
BD: 4-24-12  
Tattoo: Z2308  
Adj BW: 71  
Adj WW: N/A

HTP SVF In Dew Time      CNS Dream On L186  
HTP SVF Honeydew  
Lady Sarge Tasha U8097      GWS Ebonys Trademark 6N  
Lady Sarge Natasha N3221

CE	BW	WW	YW	MCE	Milk	MWW	Stay
12	.7	60	80	8	14	43	20
DOC	CW	YG	Marb	BF	REA	API	TI
10.4	18.3	-.22	.21	-.037	.63	121	66



**Z2080**

**Black Dbl Polled Purebred**

ASA#2684392  
BD: 1-31-12  
Tattoo: Z2080  
Adj BW: 83  
Adj WW: N/A

Mr. NLC Upgrade U8676      Ellingson Legacy M229  
Ms. NLC Mojo S6119 B  
Lady Sarge Design W9024      GFI HF Design G11  
Lady Sarge P4109

CE	BW	WW	YW	MCE	Milk	MWW	Stay
8	4.1	79	122	11	24	63	20
DOC	CW	YG	Marb	BF	REA	API	TI
*	48.0	-.29	.13	-.081	.88	116	73



**Z2012**

**Black Dbl Polled Purebred**

ASA#2684336  
BD: 1-2-12  
Tattoo: Z2012  
Adj BW: 79  
Adj WW: N/A

Triple C Opportunity      JS Burning Up 33R  
Triple C No Doubt N26L  
Lady Sarge Natasha T7008      GCF First Dream P13  
Lady Sarge Natasha N3221

CE	BW	WW	YW	MCE	Milk	MWW	Stay
8	2.9	61	92	9	20	50	25
DOC	CW	YG	Marb	BF	REA	API	TI
9.4	28.8	-.24	.10	-.040	.77	117	62

# Grass Time Ready Breeding Bulls



Lot  
95

ASA#2710400  
BD: 2-10-11  
Tattoo: Y1101  
Adj BW: 83  
Adj WW: N/A

## Y1101

**Black Polled 1/2 SM 1/4 CS 1/4 AN Bull**

SRS/Sarge Fortress T7240 LRS Preferred Stock 370C  
SRS G733 Glimmer  
Sandy Sandy Sarge U8271 Plainview Lutton E102  
Lady Sarge Stella S6216

CE	BW	WW	YW	MCE	Milk	MWW	Stay
10	.7	64	97	7	24	57	*
DOC	CW	YG	Marb	BF	REA	API	TI
9.9	28.1	-.19	.20	-.050	.48	107	65

Y1101 is an exceptional two year old. He is a good, stout and solid animal that has calving ease and would be perfect for you cattlemen who enjoy sleeping through the night.



Lot  
96

ASA#2619394  
BD: 2-18-11  
Tattoo: Y1127  
Adj BW: 95 ET  
Adj WW: N/A

## Sarge Y1127

**Black Dbl Polled Purebred Bull**

Westfall Voyager 721P SVJ Power Surge  
Drake Summer Sister  
HS True Expectations T19 STF Montana black KF25  
SVF/NJC Expectation N206

CE	BW	WW	YW	MCE	Milk	MWW	Stay
8	1.8	52	72	7	26	52	17
DOC	CW	YG	Marb	BF	REA	API	TI
8.5	14.6	-.24	.04	-.060	.39	96	57

Lots  
96-98  
are Full  
Brothers!

Sarge Y1127 is going to make somebody an excellent herd bull. He is an embryo son of Westfall Voyager and True Expectations T19. This is a powerful animal that will put some performance into your calves.



Lot  
97

ASA#2619396  
BD: 2-19-11  
Tattoo: Y1135  
Adj BW: 107 ET  
Adj WW: N/A

## Sarge Y1135

**Black Dbl Polled Purebred Bull**

Westfall Voyager 721P SVJ Power Surge  
Drake Summer Sister  
HS True Expectations T19 STF Montana black KF25  
SVF/NJC Expectation N206

CE	BW	WW	YW	MCE	Milk	MWW	Stay
8	1.8	52	72	7	26	52	17
DOC	CW	YG	Marb	BF	REA	API	TI
8.5	14.6	-.24	.04	-.060	.39	96	57

Y1135 is a full embryo flush mate to Y1127 with all the same traits and qualities. He is every bit as good as his brother.



Lot  
98

ASA#2619393  
BD: 2-17-11  
Tattoo: Y1124  
Adj BW: 110  
Adj WW: N/A

## Y1124

**Red Polled Purebred Bull**

Westfall Voyager 721P SVJ Power Surge  
Drake Summer Sister  
HS True Expectations T19 STF Montana Black KF25  
SVF/NJC Expectation N206

CE	BW	WW	YW	MCE	Milk	MWW	Stay
8	1.8	52	72	7	24	52	17
DOC	CW	YG	Marb	BF	REA	API	TI
8.5	14.6	-.24	.04	-.060	.39	96	57

This is the only red two year old on our sale this year, but he is an impressive animal with extremely docile disposition. He is put together well and will throw calves that are the same.

# Yearling Bulls

We have a really nice selection of yearlings this year with several black calving ease percentage bulls as well as some really powerful black and red AI and ET bulls. This selection of yearlings carries with them some of the best genetics around, including: SP The Answer, Mr. Amigo, Shear Force, Upgrade, In Dew Time and Dominance.



ASA#2708521  
BD: 1-1-12  
Tattoo: Z2003  
Adj BW: 79  
Adj WW: N/A

## Z2003

**Black Dbl Polled 1/2 SM 1/2 AN Bull**

GLS Combination R2      B/R New Frontier 095  
GLS Hostess H16  
Miss Sarge Magnum S6266      GFI Magnum K52  
EZ Ruby 227

CE	BW	WW	YW	MCE	Milk	MWW	Stay
7	1.9	62	98	2	14	45	*
DOC	CW	YG	Marb	BF	REA	API	TI
*	31.1	-.24	.23	-.053	.73	90	64

GLS Combination R2



ASA#2684331  
BD: 1-2-12  
Tattoo: Z2004  
Adj BW: 81  
Adj WW: N/A

## Z2004

**Black Polled Purebred Bull**

U8283      Hooks Shear Force 38K  
Lady Sarge Chris S6259  
Lady Sarge U8217      RCC Premium Beef P4007  
Lady Sarge M2050

CE	BW	WW	YW	MCE	Milk	MWW	Stay
13	.9	58	82	12	25	54	21
DOC	CW	YG	Marb	BF	REA	API	TI
10.2	20.0	-.26	.22	-.050	.67	124	67



ASA#2684335  
BD: 1-2-12  
Tattoo: Z2011  
Adj BW: 78  
Adj WW: N/A

## Z2011

**Black Dbl Polled 1/2 SM 1/2 AN Bull**

SP The Answer 813      S A V Final Answer 0035  
Lady Sarge Abovepar      S A Eline Design 648  
T7245      Brooks Above Par  
RCC/TCF Real Sweet

CE	BW	WW	YW	MCE	Milk	MWW	Stay
16	-1.5	56	86	7	16	44	*
DOC	CW	YG	Marb	BF	REA	API	TI
10.2	19.0	-.06	.33	-.015	.30	130	69



ASA#2684341  
BD: 1-3-12  
Tattoo: Z2018  
Adj BW: 85 ET  
Adj WW: N/A

## Z2018

**Black Dbl Polled Purebred Bull**

Triple C Opportunity      JS Burning Up 33R  
Triple C No Doubt N26L  
GFI Josie L24      GFI Black Classic H160  
RIV Blk Josie 43B 755G

CE	BW	WW	YW	MCE	Milk	MWW	Stay
9	1.9	61	89	9	23	53	22
DOC	CW	YG	Marb	BF	REA	API	TI
10.1	25.7	-.17	.10	-.030	.60	113	63

Triple C Opportunity



ASA#2708520  
BD: 1-3-12  
Tattoo: Z2020  
Adj BW: 80 ET  
Adj WW: N/A

## Z2020

**Black Dbl Polled Purebred Bull**

Triple C Opportunity      JS Burning Up 33R  
Triple C No Doubt N26L  
GFI Josie L24      GFI Black Classic H160  
RIV Blk Josie 43B 755G

CE	BW	WW	YW	MCE	Milk	MWW	Stay
9	1.9	61	89	9	23	53	22
DOC	CW	YG	Marb	BF	REA	API	TI
10.1	25.7	-.17	.10	-.030	.60	113	63



ASA#2684344  
BD: 1-4-12  
Tattoo: Z2022  
Adj BW: 77 ET  
Adj WW: N/A

## Z2022

**Red Dbl Polled Purebred Bull**

STF Dominance T171      STF Dominance R170  
MMP Kiss This 37L  
Lady Sarge Perdita P4163      DSR Red Viper E4  
Lady Sarge K133

CE	BW	WW	YW	MCE	Milk	MWW	Stay
10	2.1	58	78	7	23	52	17
DOC	CW	YG	Marb	BF	REA	API	TI
6.1	19.3	-.21	.02	-.084	.24	98	59



Mr. NLC Upgrade U8676



**Z2032**

**Black Dbl Polled Purebred Bull**

ASA#2684353 • BD: 1-5-12 • Tattoo: Z2032  
Adj BW: 84 • Adj WW: N/A

Mr. NLC Upgrade U8676 Ellingson Legacy M229  
Ms. NLC Mojo S6119 B  
Lady Sarge Lucky S6271 PVF-SSH 1L10 Liberty  
329N

CE	BW	WW	YW	MCE	Milk	MWW	Stay
10	3.2	85	132	12	23	65	20
DOC	CW	YG	Marb	BF	REA	API	TI
9.9	53.2	-.27	.24	-.071	.96	127	81



**Z2030**

**Red Dbl Polled Purebred Bull**

ASA#2684351  
BD: 1-5-12  
Tattoo: Z2030  
Adj BW: 82 ET  
Adj WW: N/A

STF Dominance T171 STF Dominance R170  
MMP Kiss This 37L  
Lady Sarge Perdita P4163 DSR Red Viper E4  
Lady Sarge K133

CE	BW	WW	YW	MCE	Milk	MWW	Stay
10	2.1	58	78	7	23	52	17
DOC	CW	YG	Marb	BF	REA	API	TI
6.1	19.3	-.21	.02	-.084	.24	98	59



**Z2035**

**Red Dbl Polled Purebred Bull**

ASA#2684356  
BD: 1-6-12  
Tattoo: Z2035  
Adj BW: 81 ET  
Adj WW: N/A

STF Dominance T171 STF Dominance R170  
MMP Kiss This 37L  
Lady Sarge Perdita P4163 DSR Red Viper E4  
Lady Sarge K133

CE	BW	WW	YW	MCE	Milk	MWW	Stay
10	2.1	58	78	7	23	52	17
DOC	CW	YG	Marb	BF	REA	API	TI
6.1	19.3	-.21	.02	-.084	.24	98	59



STF Dominance T171



**Z2042**

**Red Dbl Polled Purebred Bull**

ASA#2684363 • BD: 1-9-12 • Tattoo: Z2042  
Adj BW: 84 ET • Adj WW: N/A

STF Dominance T171 STF Dominance R170  
MMP Kiss This 37L  
Lady Sarge Perdita P4163 DSR Red Viper E4  
Lady Sarge K133

CE	BW	WW	YW	MCE	Milk	MWW	Stay
10	2.1	58	78	7	23	52	17
DOC	CW	YG	Marb	BF	REA	API	TI
6.1	19.3	-.21	.02	-.084	.24	98	59



**Z2037**

**Black Dbl Polled Purebred Bull**

ASA#2684358  
BD: 1-7-12  
Tattoo: Z2037  
Adj BW: 77 ET  
Adj WW: N/A

DHF Jades Dreamworks CNS Dream On L186  
RF Black Jade 950N  
TCF RHF Miranda U1985 Triple C Invasion R47K  
Triple C Crazy Queen L98

CE	BW	WW	YW	MCE	Milk	MWW	Stay
3	4.5	61	84	4	18	49	21
DOC	CW	YG	Marb	BF	REA	API	TI
9.3	26.4	-.22	.12	-.050	.60	99	59



**Z2090**

**Black Polled 3/4 SM 1/8 MX 1/8 AR Bull**

ASA#2684398  
BD: 2-2-12  
Tattoo: Z2090  
Adj BW: 69  
Adj WW: N/A

Hooks Shear Force 38K Nichols Legacy G151  
C&D Tracy  
Lady Sarge W9286 Sarge Major League T7003  
:ady Sarge M2282

CE	BW	WW	YW	MCE	Milk	MWW	Stay
15	-1.0	64	93	10	27	60	*
DOC	CW	YG	Marb	BF	REA	API	TI
11.2	23.4	-.31	.31	-.044	.93	138	76



ASA#2684404  
BD: 2-5-12  
Tattoo: Z2099  
Adj BW: 80 ET  
Adj WW: N/A

**Z2099**  
**Black Dbl Polled Purebred Bull**

GCF Mr. Amigo CNS Dream On L186  
GCF Miss MT-Zel  
HS True Expectations T19 STF Montana black KF25  
SVF/NJC Expectation N206

CE	BW	WW	YW	MCE	Milk	MWW	Stay
10	1.8	61	84	9	12	43	17
DOC	CW	YG	Marb	BF	REA	API	TI
11.3	22.2	-.26	.17	-.076	.49	109	64

GCF Mr. Amigo



ASA#2684407  
BD: 2-8-12  
Tattoo: Z2107  
Adj BW: 79  
Adj WW: N/A

**Z2107**  
**Black Polled 1/2 SM 1/2 AN Bull**

SP The Answer 813 S A V Final Answer 0035  
S A Eline Design 648  
Lady Sarge W9312 Hooks Pacesetter 8P  
Lady Sarge M2051

CE	BW	WW	YW	MCE	Milk	MWW	Stay
14	.1	63	95	9	22	53	*
DOC	CW	YG	Marb	BF	REA	API	TI
9.4	26.7	-.10	.29	-.020	.48	125	69

SP The Answer 813



ASA#2684420  
BD: 2-12-12  
Tattoo: Z2123  
Adj BW: 79 ET  
Adj WW: N/A

**Z2123**  
**Black Dbl Polled Purebred Bull**

HTP SVF In Dew Time CNS Dream On L186  
HTP SVF Honeydew  
Lady Sarge Invasive Luv Triple C Invasion R47K  
NJC SVF Love Me Dont U

CE	BW	WW	YW	MCE	Milk	MWW	Stay
11	1.4	58	80	10	18	47	22
DOC	CW	YG	Marb	BF	REA	API	TI
10.0	19.1	-.17	.24	-.027	.54	123	65

HTP SVF In Dew Time

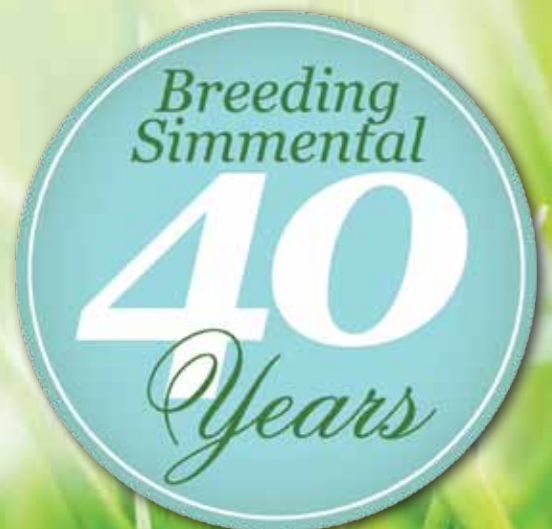


ASA#2684422  
BD: 2-13-12  
Tattoo: Z2126  
Adj BW: 79  
Adj WW: N/A

**Z2126**  
**Black Polled Purebred Bull**

Sarge Fortress X0034 SVF Steel Force S701  
SS Babys Breath P035  
Lady Sarge Orlando T7361 TOSU Orlando Foo4  
Lady Sarge E5001

CE	BW	WW	YW	MCE	Milk	MWW	Stay
10	1.9	65	99	7	27	59	23
DOC	CW	YG	Marb	BF	REA	API	TI
8.9	31.4	-.21	.08	-.055	.63	119	66



**We look forward to seeing you at our sale  
on Saturday, May 25th in Pine City, MN!**

## BULL BUYER'S QUICK GUIDE TO ASA EPDS & \$ INDEXES

### Definitions of Terms

Expected Progeny Differences (EPDs): EPDs are the most accurate and effective tool available for comparing genetic levels.

Back Fat (BF): Inches of backfat.

Birth Weight (BW): Pounds of birth weight.

Calving Ease (CE): Percent of unassisted births when used on heifers.

Carcass Weight (CW): Pounds of carcass weight.

Maternal Calving Ease (MCE): Percent of unassisted births in first-calving daughters.

Milk (MLK): Pounds of weaning weight due to milk.

Marbling (MRB): Marbling score.

Maternal Weaning Weight (MWW): Pounds of weaning weight due to milk and growth.

Ribeye Area (REA): Square inches of ribeye.

Warner-Bratzler Shear Force (WBSF): Pounds of force required to shear a steak.

Stayability (STAY): Percent of daughters remaining in the cowherd at 6 years of age.

Terminal Index (TI): Dollars per cow exposed under a terminal-sire scenario.

Weaning Weight (WW): Pounds of weaning weight.

Yearling Weight (YW): Pounds of yearling weight.

Yield Grade (YG): Yield grade score.

### Explanation of How to Utilize API and TI Indexes

First, determine which index to use; if you're keeping replacements use API, if not, TI. Then, just as with EPDs, zero in on the unit difference between bulls. (As described to the left, index units are in dollars per cow exposed.) The difference can be used to determine how much a bull is worth compared to another. Or, put another way, how much you can pay for one bull compared to another. For example, when buying an all-purpose-type sire, you can quickly figure a bull scoring +100 for API is worth an extra \$6,000 over a \$50 bull if both are exposed to 30 cows over 4 years (\$50 diff. x 30 hd. x 4 yr. = \$6,000). A percentile-ranking chart is required to determine where a bull's index value ranks him relative to other bulls in the breed.

For more information, visit [www.simmental.org](http://www.simmental.org)

### Explanation of ASA's New EPD Evaluations

Presenting Fall 2012 EPDs on a NEW BASE:

The Fall 2012 ASA Genetic Evaluation marks the first time major breeds have expressed their EPDs on a common base (i.e., the same scale). The common base was a natural evaluation of the RAAA/ASA genetic evaluation partnership. Though forming a common base will initially lead to some confusion, the boards of both organizations unanimously agreed that it was a positive step for the beef industry – a step that allows producers to directly compare genetic predictions from the largest multi-breed database in the world.

As with any progress, there is change. Breeders and commercial producers will need to adjust to the new base. Much like converting from Fahrenheit to Celsius, it may be a struggle at first, however, over time we will all grow accustomed to the new scale. For example, look at the average EPDs of purebreds shown in this table to the right.

The changes to the base does not change the evaluation of animals; it just changes the magnitude of the EPD. It has the same impact on all animals. Be sure to use the new percentile tables to develop a "feel" for the new EPD base.

	PB EPD Average Fall 2012	PB EPD Average Spring 2012
CE	7.5	7.5
BW	2.6	0.7
WW	63.9	30.8
YW	91.0	56.3
MCE	9.8	10.3
MLK	22.3	3.4
MWW	54.3	18.8
STAY	18.0	18.0
DOC	10.2	9.6
GWT	27.6	-2.9
YG	-0.26	-0.04
MARB	0.07	0.17
BF	-0.058	0.012
REA	0.59	0.19
WBSF	-0.32	-0.31
API	106	105
TI	62	62

**Purebred Simmental Percentile Table Spring 2013**

CE	BW	WW	YW	MCE	Milk	MWW	Stay	DOC	CW	YG	Marb	BF	REA	WBSF	API	TI
9	2.3	62.5	91.2	8.1	23	54.2	19.0	9.4	26.9	-26	.09	-.06	.60	-.30	107	63

**Hybrid Simmental Percentile Table Spring 2013**

CE	BW	WW	YW	MCE	Milk	MWW	Stay	DOC	CW	YG	Marb	BF	REA	WBSF	API	TI
9.9	1.0	58.2	88.9	7.2	21.9	50.9	*	9.8	24.0	-20	.25	-.04	.51	-.29	107	63

# Sargeant Farms Herd Sires

## OMF Long Cut J6

**Black Dbl Polled Purebred Bull** • ASA#2036328  
 Meyers Red Top x OMF Sadevce G-26  
 EPDs: -1 5.3 78 101 7 12 51 14 11.3  
 Carcass: 37.1 -.18 -.01 -.115 .14 77 62

## WS Beef Maker

**Black Homo. Polled Purebred Bull** • ASA#2289889  
 Hooks Shear Force 38K x DCR Ms Ribeye N72  
 EPDs: 15.4 0.3 75 107 10 29 66 23 16.0  
 Carcass: 33.5 -.27 .59 -.031 1.0 160 88

## Sarge Silverbullet U8031

**Homo. Black Dbl Polled Purebred Bull** • ASA#2452317  
 Triple C Invasion R47K x NJC SVF Love Me Dont U  
 EPDs: 6 2.4 49 71 7 27 51 23 8.8  
 Carcass: 15.6 -.26 .08 -.040 .59 106 55

## Sarge Macho X0218

**Black Polled 1/2 SM 1/2 AN Bull** • ASA#2547820  
 Mytty In Focus x AJE/HS/MBCC Hopes Trisha  
 EPDs: 14 -1.0 63 98 11 24 56 \* 14.1  
 Carcass: 26.7 -.04 .58 -.010 .34 146 79

## Red Sarge R5300

**Red Homo. Polled Purebred AR Bull** • ASA#2588800  
 GP Catalyst 025 x Red Lady Sarge J9006  
 EPDs: 8 1.5 52 81 4 17 43 \* \*  
 Carcass: 20.3 .04 .33 .000 .06 71 49

## Sarge Y1047

**Black Dbl Polled Purebred Bull** • ASA#2619369  
 HTP SVF In Dew Time x Lady Sarge Hummer S6261  
 EPDs: 12.5 0.9 62 88 9.7 17 48 22 8.7  
 Carcass: 23.1 -.24 .24 -.040 .66 128 69

## SS Ebonys Grandmaster

**Homo. Black Homo. Polled Purebred Bull** • ASA#2281133  
 PVF-BF BF26 Black Joker x SOSF Ebonys Joy L-123  
 EPDs: 8 0.9 46 66 2 26 49 31 10.4  
 Carcass: 10.7 -.17 .26 .025 .86 -.29 134 59

## Mytty In Focus

**Homo. Black Homo. Polled Purebred Bull** • ASA#2326312  
 S A F Focus of E R x Mytty Countess 906  
 EPDs: 21 -3.9 66 114 14 21 53 \* 19.1  
 Carcass: 32.2 .16 .99 .030 .03 165 82

## RFS Red Iron T20

**Red Polled Purebred Bull** • ASA#2409687  
 35R x RF Raul  
 EPDs: 8 2.4 73 101 11 29 65 20 16.6  
 Carcass: 33.2 -.31 .16 -.071 .83 115 72

## Red Six Mile Sakic 832S

**Red Homo. Polled Purebred AR Bull** • ASA#2486267  
 Red Six Mile Aviator 217P x Red Six Mile Siera 257P  
 EPDs: 3 -0.2 66 87 9 24 57 \* 11.1  
 Carcass: 20.3 .05 -.16 -.020 -.17 46 46

## Mr NLC Upgrade U8676

**Black Homo. Polled Purebred Bull** • ASA#2474338  
 Ellingson Legacy M229 x Ms NLC Mojo S6119 B  
 EPDs: 11 2.2 93 142 14 26 72 20 11.3  
 Carcass: 57.1 -.39 .28 -.092 1.19 137 89

## SP The Answer 813

**Black Homo. Polled Purebred AN Bull** • ASA#2519359  
 S A V Final Answer 0035 x S A Eline Design 648  
 EPDs: 21 -4.8 60 95 12 22 51 \* 9.8  
 Carcass: 18.7 .02 .67 .030 .32 150 72

## SVF/NJC Built Right N48

**Hetro. Black Homo. Polled Purebred Bull** • ASA#2225381  
 CNS Dream On L186 x NJC Ebony Antoinette  
 EPDs: 14 1.2 60 89 5 21 51 16 7.5  
 Carcass: 24.6 -.18 .06 -.075 .28 107 63

## X0296

**Black Polled Purebred Bull** • ASA#Pending  
 SS Ebonys Grandmaster x Lady Sarge Natasha N3221  
 Est EPDs: 8 1.9 54 81 4 22 48 29 10.1  
 Carcass: 20.4 -.24 .16 -.020 .76 127 60

## NLC Good A Nuff 33G

**Red Homo. Polled Purebred Bull** • ASA#1936595  
 NLC 64Y Tomcat x NLC A03 Avaline  
 EPDs: 16 0.9 58 85 5 21 49 20 11.0  
 Carcass: 21.9 -.15 -.38 -.083 .09 92 51

## Sarge Fortress X0034

**Black Dbl Polled Purebred Bull** • ASA#2547813  
 SVF Steel Force S701 x SS Babys Breath P035  
 EPDs: 10 1.8 65 95 8 24 56 28 9.1  
 Carcass: 29.2 -.25 .06 -.050 .70 127 65

## HTP SVF In Dew Time

**Homo. Black Homo. Polled Purebred Bull** • ASA#2285555  
 CNS Dream On L186 x HTP SVF Honeydew  
 EPDs: 15 0.4 61 81 12 10 41 21 11.2  
 Carcass: 17.9 -.12 .41 -.014 .49 138 72

## Hooks Forum 77J

**Black Dbl Polled Purebred Bull** • ASA#2024469  
 Nichols Blk Destiny D12 x Hooks Applause 59F  
 EPDs: 16 -1.7 55 81 13 21 48 14 9.8  
 Carcass: 15.1 -.33 -.01 -.050 .72 107 63

## Sarge Affirmed W9014

**Black Polled Purebred Bull** • ASA#2523982  
 STF Affirmed P44R x SOSF Ebonys Joy L-123  
 EPDs: 13 -0.5 52 78 7 32 58 21 11.9  
 Carcass: 15.1 -.22 .25 -.020 .61 128 66

## GFI HF Design G11

**Black Dbl Polled Purebred Bull** • ASA#1929438  
 LRS Preferred Stock 370C x ER Miss JB91X 9A  
 EPDs: 5 4.2 65 104 8 27 60 21 8.6  
 Carcass: 38.0 -.25 .01 -.060 .73 101 61

## Hooks Pacesetter 8P

**Black Homo. Polled Purebred Bull** • ASA#2241050  
 Hooks Shear Force 38K x Hooks Meah 22M  
 EPDs: 14 0.8 58 92 9 22 51 19 13.2  
 Carcass: 26.4 -.27 -.07 -.031 .92 107 60

## THSF Freedom 300N

**Black Dbl Polled Purebred Bull** • ASA#2224042  
 BH Tracker 998J x SAFN Miss Zing 02H  
 EPDs: 4 1.8 78 129 15 19 58 20 15.8  
 Carcass: 49.3 -.33 -.24 -.075 1.05 96 66

We look forward to seeing you at our sale on Saturday, May 25th in Pine City, MN!



# Selling 114 Elite Lots ~ Pairs, Opens, Bulls



**Lady Sarge Y1099**



**Lady Sarge X0082**



**Lady Sarge PRF Josie T7098**



**Sarge Y1204**



**Lady Sarge U8217**



**Lady Sarge W9194**



**Lady Sarge T7221**



**Sandy Sarge W9181**



**Sarge Y1101**



**WE LOOK FORWARD TO YOUR VISIT!**

*Simmental and SimAngus™*

**Eberspacher Enterprises Inc.**  
2904 County Road 6  
Marshall, MN 56258

First Class  
U.S. Postage  
PAID  
Marshall, MN  
Permit #86

Join us on Saturday  
**May 25, 2013**

Sale Time: 12 Noon CST  
Central Livestock Association  
Rock Creek Market  
Pine City, Minnesota

*First Class Mail: Time Dated Material!*