

IN THE HEARTLAND

GONSIOR
SIMMENTALS

MARCH 8

55
Anniversary Sale

CELEBRATE WITH US AT 12:30 PM IN FULLERTON, NEBRASKA

Welcome

Selling 111 Lots on March 8...

Black & Red Polled SimGenetics including Spring & Fall Herd Bull Prospects, Elite Bred Females & Cow/Calf Pairs, Fancy Open Heifers, & Genetic Lots!



Here we go again. Seems like we just weaned calves, and now another sale is about here. Hard to believe this is our 25th sale already. 25 years is a long time. It's crazy to think about the changes we've made and the progress that we've seen in that time. Firmly believe that the cattle are now better than ever. The cattle markets, as well, are at levels that seem out of this world. With the national cow herd at low all-time numbers, we hope that the demand for beef will continue and keep the cattle prices at a high level for years.

Saturday, March 8th is go-time this year. We will have bulls to fit every need, from low percentage to purebreds. Some real dudes in those yards. The opens sure look the part, and are packed with deep pedigrees. Finally, the breds/pairs will know how to work; they again ran cornstalks this winter, with their first supplemented feed coming 10 days before pictures in late December.



No changes in the family numbers this year, but there was one big event. Gage and Maddy got married in August, and their family is doing well. Oaklynn (3...soon to be 4) is a good big sister and pretty darn smart; her first love is all of her animals. I seldom see her when she doesn't have some type of animal toy with her. Olivia (OJ...1, approaching 2) doesn't say a whole lot yet, but she's growing up fast. They both love spending time in the Ranger, and now driving around seeing the baby calves. Gage has high hopes for at least one showman out of the crew. I asked him for some sports pictures of them, but none are available yet. The girls have a new puppy name Daisy that keeps them occupied. Shay's kids, Braxton and Barely, 3 and 2, are balls of fire, and full of energy...just like little boys should be. As for my kids, Tres is full time with us on the farm, debating if he wants to finish those last 30 hours for his bachelor of science. He's been a big help. Teagan is finishing up her second year of college in the psychology field, and is on the Dean's List, while also working at a bank part-time. Terrick, now a junior, had shoulder surgery in May and is now fully recovered. He missed Legion baseball last summer, but got cleared to play basketball in November. His team has had a good season to date; they are currently ranked 5th in state after placing 2nd in their conference tourney. Terrick is the atypical 6'1, 220 pound point guard...2nd on his team in scoring, but prides himself on defense. So far this season he's had 14 drawn charges, which ranks him in the all-class top 5 in Nebraska. He plays tough with a high ball IQ. He now has to decide if his repaired shoulder can handle baseball. He's a Roll of Excellence student and is looking at college options.



The past year has not been without a few different trials and tribulations, but we all get by. Seems like our whole year on the farm is directed toward the end-goal that culminates on March 8th. We invite you all to come take a look. The animals will be in place at our sale facility by Friday morning, but feel free to drop by the west place anytime prior to that. Bull buyers...remember volume and sale day hauling discounts, as well as our satisfaction guarantee on all animals selling. Please holler at Gage, Tres or myself if we can answer any questions prior to the sale. Videos will be available on both EE and DVauctions. The video auction format will be quick and efficient. One and all are welcome!



LOOKING TO MAKE IT GREAT AGAIN IN 2025!

Scott for Gonsior Simmentals



SCHEDULE:

FRIDAY, MARCH 7, 2025 Viewing of Sale Cattle

SATURDAY, MARCH 8, 2025

Join Us!

8:00 am Viewing of Sale Cattle

11:00 am Complimentary Lunch

12:30 PM **Gonsior Simmental 25th Annual
"In The Heartland" Production Sale – Video Sale**

Directions to Gonsior Farms Sale Facility:

One mile north of Fullerton, NE, on Hwy. 14. On Hwy. 14-22 Junction turn east. Go 3 miles on Hwy. 22 to Gonsior farm.

Air Transportation:

Omaha, NE 110 miles from sale site
Albion, NE 25 miles from sale site

Motels:

Fullerton Inn 308-536-2699
Broken Arrow Wilderness (ultra-modern cabins) 308-536-2441

Sale Terms:

All cattle sell under the suggested sale Terms & Conditions of the American Simmental Association.

Livestock Insurance: Insurance available sale day through sale management.

EPDs: Please note that EPDs may change from the time the sale catalog is printed until registration paper is transferred. EPDs are BOLT 2-4-25 numbers.

Nearly all animals are Genomic Enhanced/parent verified.

Sale Order & Updates: Additional information and sale order can be found on the Eberspacher Enterprises web site, APP and Facebook page. Like us to receive updates automatically.

Announcements: Announcements made sale day and from the auction block during the sale take precedence over printed material in the catalog or other printed material associated with this sale. Anyone attending this sale, attends at their own risk. Breeders or any of the sale force will not be held responsible for any injury while attending this sale.

Open Heifers:

We would like to retain the right to one flush on all open heifers selling.

Volume Discounts:

3% 3 bulls; 4% 4 bulls; 5% 5 bulls and over.

Auctioneer: Col. Tracy Harl 402-469-3852

Marketing Agents:

Val Eberspacher, EE Sales 612-805-7405

Derek Vogt, EE Sales 308-750-5216

Rick Buehler 402-239-8047

Buddy Robertson 580-747-7000

Tim Burke 402-750-0440

Chris Beutler, Livestock Digital 402-380-8244

Jason Hanson, Livestock Digital 402-649-0500

Braden Benes 402-608-0577

Jeremie Ruble 406-581-7940

Gonsior Simmentals will retain 1/3 semen interest on all bulls selling unless otherwise noted. We will keep the bulls FREE until April 15, 2025, and at cost after that date!

\$100 off the cost of your bull if you haul sale day!

DVAuction
Broadcasting Real-Time Auctions

Visit www.DVAuction.com and register today.

For general questions please contact our office:
402-316-5460 or support@dvauction.com



SALE DAY PHONES:

Scott Cell: 308-550-0739

Gage Cell: 308-624-0607

Tres Cell: 308-550-0693

Mike Cell: 308-550-0742

Val Cell: 612-805-7405

GONSIOR SIMMENTALS

26262 N. Osage Rd., Fullerton, NE 68638

E-mail: sgonsior3@gmail.com or
gagehoracek8@yahoo.com

Scott & Amy Gonsior 308-550-0739

Gage & Maddy Horacek 308-624-0607

Tres Gonsior 308-550-0693

Mike Gonsior 308-550-0742

www.gonsiorsimmentals.com

SALE PROFESSIONALLY MANAGED BY:

Eberspacher
ENTERPRISES INC.

Val and Lori Eberspacher
2904 Co Rd 6, Marshall, MN
sales@ebersale.com
Office: 507-532-6694
Val's Cell: 612-805-7405
www.ebersale.com





**STRONG
AGE
BULLS**



AS Diamond 20C, Dam



Gonsior The Beacon F80,
Maternal Brother

LOT 1 Gonsior Michel L907

Homo Black Homo Polled Purebred SM Bull

#4373553 • Tattoo: L907 • BD: 9/10/23 • Act. BW: 77 • Adj. WW: 685



- Breeder bull alert – Michel will ring all the bells
- He's had numerous maternal sibs make the high seller list, including The Beacon at \$20,000 to Volk and several sisters between \$6K and \$10K
- He's long, stout, good footed and super easy on the eyes
- The best things we can say about his donor dam...she's consistent and proven
- Great calving ease choice, while maintaining good growth and a super API
- Also a maternal sib to our young herdsire, The General

CE	BW	WW	YW	ADG	MCE	MM	MWW	STAY
15	-1.4	76	113	.23	9	25	63	16
15%	15%				10%			

DOC	CW	YG	MARB	BF	REA	API	TI
16.2	30.5	-.28	9.6	-.066	.62	165	93
10%			10%	%		10%	15%

BRIDLE BIT ECLIPSE E744
HOOK'S GALILEO 210G
 HOOK'S EVITA 18E
 W/C WIDE TRACK 694Y
AS DIAMOND 20C
 WRS EMERALD Z216



HOOK'S GALILEO 210G, SIRE

LOT 2 Gonsior Tornado L902

DbI Black DbI Polled 1/2 SM 1/2 AN Bull

#4373548 • Tattoo: L902 • BD: 9/7/23 • Act. BW: 80 • Adj. WW: 660



CE	BW	WW	YW	ADG	MCE	MM	MWW	STAY
12	1.8	85	135	.31	1	21	64	7
		25%	25%	30%				

DOC	CW	YG	MARB	BF	REA	API	TI
13.5	34.6	-.27	.31	-.035	.90	116	83
		30%			15%		

O C C PAXTON 730P
COLEMAN CHARLO 0256
 BOHI ABIGALE 6014
 TRIPLE C BETTIS S72J
GONSIOR TEXAS TORNADO
 CIRCLLET ANTOINETTE PEARL

- Sired by the Angus legend, Coleman Charlo
- His dam, X205, was a great donor cow for us
- He's long, stout and sound
- As is common with Charlos, this is a big country bull that doesn't enjoy tight quarters
- Good chance of being Homo black/polled

Offered with Otis Rinker



Gonsior Texas Tornado,
Dam

LOT 3 Gonsior Michelangelo L904

DbI Black DbI Polled Baldy 5/8 SM 3/8 AN Bull

#4373550 • Tattoo: L904 • BD: 9/8/23 • Act. BW: 69 • Adj. WW: 680



CE	BW	WW	YW	ADG	MCE	MM	MWW	STAY
18	-3.9	71	106	.22	12	32	67	20
10%	5%				3%	4%	30%	5%

DOC	CW	YG	MARB	BF	REA	API	TI
12.3	26.4	-.23	.67	-.053	.54	173	91
			15%	25%		5%	20%

BRIDLE BIT ECLIPSE E744
HOOK'S GALILEO 210G
 HOOK'S EVITA 18E
 CCR BOULDER 1339A
RUTH MS G755
 RUTH ELVIRA E755

- L904 started small but grew well
- Sired by Galileo, you'll notice super EPDs
- Certain calving ease/growth combination bull with a top 5% 173 API
- Brother was a \$12,000 high seller to Texas last year



Gonsior Kane K972,
\$12,000 Maternal
Brother



S A V Bismarck, Sire

LOT 4 Gonsior Business L905

Homo Black Homo Polled 1/2 SM 1/2 AN Bull
 #4373551 • Tattoo: L905 • BD: 9/8/23 • Act. BW: 85 • Adj. WW: 690

CE	BW	WW	YW	ADG	MCE	MM	MWW	STAY
12	.2	75	111	.23	7	24	62	10
DOC	CW	YG	MARB	BF	REA	API	TI	
11.9	37.7	-.24	.29	-.048	.75	118	78	
					35%			

G A R GRID MAKER
S A V BISMARCK 5682
 S A V ABIGALE 0451
 KAPPES MILE HIGH B11
GONSIOR FAITHE F14
 GONSIOR UPGRADA Z303



- A striking, magnificent creature
- Old school sired by SAV Bismarck, he'll make females extra special
- He should calve easy, yet make them grow
- His dam, F14, is no stranger to raising good ones, and she has the best attitude on the place
- He's great fronted, sound structured, big topped, broody and long bodied

Offered with Sonderup

LOT 5 Gonsior Beauty L913

Dbl Black Dbl Polled Baldy Purebred SM Bull
 #4373559 • Tattoo: L913 • BD: 9/14/23 • Act. BW: 89 ET • Adj. WW: 640

CE	BW	WW	YW	ADG	MCE	MM	MWW	STAY
12	2.3	76	107	.19	5	11	49	11
DOC	CW	YG	MARB	BF	REA	API	TI	
11.9	1.5	-.62	.18	-.106	1.11	123	77	
		1%		10%	10%			

MR CCF VISION
MR CCF 20-20
 HTP SVF DEW THE STROKE
 LLSF UPRISING Z925
GONSIOR/RC BEAUTY B14
 GONSIOR TEXAS TORNADO



- Super flashy, perfect baldy
- An ET out of our Beauty B14 donor
- He's a 20-20 that's moderate and sound
- L913 is one of the more nervous bulls on the sale

LOT 6 Gonsior Sugar L906

Homo Black Dbl Polled Purebred SM Bull
 #4373552 • Tattoo: L906 • BD: 9/9/23 • Act. BW: 82 • Adj. WW: 680

CE	BW	WW	YW	ADG	MCE	MM	MWW	STAY
13	.0	70	98	.17	6	25	60	15
30%	30%					35%		
DOC	CW	YG	MARB	BF	REA	API	TI	
8.1	17.1	-.29	.41	-.057	.57	144	83	
		20%			35%			

CDI INNOVATOR 325D
W/C SUGAR DADDY 9002H
 WS MISS SUGAR C4
 MR CCF 20-20
GONSIOR SHEZA 20 G31
 HALLS BE STEEL MY HEART



- Not sure how we missed this guy on picture day, but he's the real deal
- He was a favorite of the fall bull calves last winter
- Complete, powerful and good looking
- His dam is a good X50 daughter
- Sire Sugar Daddy always puts good EPDs on them
- Calving ease/growth option



Halls Be Steel My Heart, Grandam



Gonsior Gypsy Rose G2, Dam



THSF Lover Boy B33, Sire

LOT 7 Gonsior Big Boy L911

Hetero Black Dbl Polled Purebred SM Bull

#4373557 • Tattoo: L911 • BD: 9/12/23 • Act. BW: 68 ET • Adj. WW: 650

CE	BW	WW	YW	ADG	MCE	MM	MWW	STAY
15	-.8	76	112	.22	8	26	64	16
15%	20%				20%	30%		

DOC	CW	YG	MARB	BF	REA	API	TI
14.1	15.1	-.31	.41	-.070	.50	153	87
25%		20%			25%	30%	

THSF LOVER BOY B33

HTP/SVF DURACELL T52

RP/MP RIGHT TO LOVE 015U

W/C EXECUTIVE ORDER 8543B

GONSIOR GYPSY ROSE G2

GONSIOR UNFORGOTTEN 24Y



- A very complete, good looking beef bull
- Lover Boy sired out of the young G2 donor
- No holes and use him however you wish
- Calving ease with acceptable growth and a 153 API



LOT 8 Gonsior Empire L915

Hetero Black Homo Polled Baldy 3/4 SM 1/4 AN Bull

#4373561 • Tattoo: L915 • BD: 9/17/23 • Act. BW: 80 • Adj. WW: 675

CE	BW	WW	YW	ADG	MCE	MM	MWW	STAY
15	-2.5	67	101	.21	8	22	55	20
25%	15%							10%

DOC	CW	YG	MARB	BF	REA	API	TI
15.4	3.3	-.25	.48	-.019	.57	154	81
20%		35%				20%	

IR IMPERIAL D948

BAR CK RED EMPIRE 9153G

WS MISS NORTHSTAR B180

SVF/NJC BUILT RIGHT N48

GONSIOR BUILT 4 JUNE16

O C C JUANADA 673N

- Red Empire sired 3/4 blood with a ton of substance
- Dam is a super Built Right daughter of our old OCC Juanada donor
- Soft, sound and performance oriented
- Should be a great heifer bull candidate, and his daughters will be the deal



O C C Juanada 673N, Grandam



LOT 9 Gonsior Ignite L919

Hetero Black Dbl Polled Baldy Purebred SM Bull

#4373565 • Tattoo: L919 • BD: 9/25/23 • Act. BW: 86 • Adj. WW: 675

CE	BW	WW	YW	ADG	MCE	MM	MWW	STAY
10	2.5	67	100	.21	7	23	56	18
								30%

DOC	CW	YG	MARB	BF	REA	API	TI
1.8	2.9	-.37	.19	-.093	.59	130	72
				20%			

W/C FORT KNOX 609F

SS-C-W IGNITION H615

SS SWEET DESIRE

FSCI INDYS UPGRADE

GONSIOR EMMA E19

GONSIOR BLAZING Y208

- Growth option sired by CW's Ignition bull
- This is a powerful beast that is the longest sided bull in the sale
- Stands on good bone and compliments his extreme length with good rib depth
- Dam E19 has raised some good ones





W/C Bankroll 811D, Sire



Halls Be Steel My Heart, Dam

LOT 10 Gonsior Banking L917

Homo Black Homo Polled Baldy Purebred SM Bull

#4373563 • Tattoo: L917 • BD: 9/22/23 • Act. BW: 95 ET • Adj. WW: 680

CE	BW	WW	YW	ADG	MCE	MM	MWW	STAY
11	1.9	68	99	.19	6	22	56	7

DOC	CW	YG	MARB	BF	REA	API	TI
6.1	17.9	-.40	-.18	-.066	.85	91	64

W/C LOADED UP 1119Y
W/C BANKROLL 811D
 MISS WERNING KP 8543U
 SVF STEEL FORCE S701
HALLS BE STEEL MY HEART
 JM BF H25



- Full baldy with a ton of power
- Bankroll X Broker's sister... should make fancy baldy heifers that are in demand
- Heavy boned, thick muscled and super masculine
- He's an ET son of X50, who's now owned with Buehler and Bruhn
- Donor dam now records 97 offspring in the ASA database

LOT 11 Gonsior Dropping Dimes L920

Homo Black Homo Polled Purebred SM Bull

#4373566 • Tattoo: L920 • BD: 10/6/23 • Act. BW: 74 • Adj. WW: 680

CE	BW	WW	YW	ADG	MCE	MM	MWW	STAY
13	.4	83	118	.22	6	24	66	19
35%	35%	35%					35%	20%

DOC	CW	YG	MARB	BF	REA	API	TI
14.8	33.8	-.46	.01	-.109	.91	135	80
20%	35%	20%		10%			

MR SR 71 RIGHT NOW E1538
MR SR MIC DROP G1534
 MISS SR C1534
 R&R CHAMBERLAIN X744
HILB DAKOTA LOVE A016S
 SS BABYS BREATH P035



SS Babys Breath P035, Grandam

- Here's a stud sired by Mic Drop
- This bull will fit all facets; growthy feedlot steers or sensational daughters
- Dam A016S is a beauty queen with a great udder; a daughter of Baby's Breath
- This one is growthy, stout and alert

POWERHOUSE YEARLING BULLS

LOT 12 Gonsior Jack Flash M7

Hetero Black Dbl Polled Baldy Purebred SM Bull

#4442536 • Tattoo: M7 • BD: 1/23/24 • Act. BW: 72 • Adj. WW: 636

CE	BW	WW	YW	ADG	MCE	MM	MWW	STAY
18	-2.4	58	78	.13	12	25	54	17
2%	5%				1%	35%		35%

DOC	CW	YG	MARB	BF	REA	API	TI
1.8	3.2	-.25	.21	-.053	.30	143	73
						35%	

HTP/SVF DURACELL T52
THSF LOVER BOY B33
 RP/MP RIGHT TO LOVE 015U
 SVF/NJC BUILT RIGHT N48
GONSIOR UNFORGOTTEN 24Y
 GFI HF UNFORGETTABLE 9A GOO



GFI HF Unforgettable 9A G00, Grandam

- For the chrome crowd, Jack Flash is your fix
- Moderate, flashy and smooth on the move
- He sure reads calving ease, and expect darn good baldy daughters
- Top 1% MCE, 2% calving ease, and 4% birthweight
- From the Unforgettable 9A cow family



Five Star Jackson J10, Sire



KS Miss Sequoia Y770, Grandam

LOT 13 Gonsior Ten Star M8

Homo Black Homo Polled Purebred SM Bull

#4442537 • Tattoo: M8 • BD: 1/23/24 • Act. BW: 89 • Adj. WW: 806

CE	BW	WW	YW	ADG	MCE	MM	MWW	STAY
10	3.0	90	138	.30	7	35	79	15
		15%	15%	20%		3%	2%	

DOC	CW	YG	MARB	BF	REA	API	TI
12.5	42.3	-.29	.40	-.066	.82	144	91
	15%		20%			35%	20%

HOOK'S FULL FIGURES 11F

FIVE STAR JACKSON J10

KBHR F316

W/C FORT KNOX 609F

CTN JUDY J683

KS MISS SEQUOIA Y770



- Ten Star is a stout stud by 5 Star Jackson
- Breeder bull with a stellar pedigree
- Big, heavy muscled and growthy
- This is one of top growth options, weaning at 806# to ratio 115
- Top 2% MWW, top 3% MM, top 15% WW and YW, Marbling, and TI top 20%
- Wanna raise the very best performance feedlot calves; give M8 a good look
- Out of a Y770 daughter



LOT 14 Gonsior/LF Reinvest M5

Homo Black Homo Polled 1/2 SM 1/2 AN Bull

#4442534 • Tattoo: M5 • BD: 1/22/24 • Act. BW: 80 • Adj. WW: 662

CE	BW	WW	YW	ADG	MCE	MM	MWW	STAY
13	-2.9	67	117	.31	8	22	55	14
	15%			30%	30%			

DOC	CW	YG	MARB	BF	REA	API	TI
11.2	32.1	-.02	.56	-.004	.34	147	83
			25%			35%	

BARSTOW CASH

SITZ DIVIDEND 649C

SITZ BARBARAMERE NELL 39A

MR NLC UPGRADE U8676

GS/WRS MS INDEPENDENT Z1

KA TCF INDEPENDENCE S30L

- Reinvest should be the commercial man's delight
- Also breed your heifers to him too, with the -2.9 BW EPD
- Complete is the best word to describe him
- Dam is an own daughter of the great Independence

Offered with Liesch



KA TCF Independence S30L, Grandam



LOT 15 Gonsior Charmed Life M17

Homo Black Dbl Polled 3/8 SM 5/8 AN Bull

#4442546 • Tattoo: M17 • BD: 1/26/24 • Act. BW: 85 • Adj. WW: 702

CE	BW	WW	YW	ADG	MCE	MM	MWW	STAY
9	2.0	75	116	.25	0	22	60	5

DOC	CW	YG	MARB	BF	REA	API	TI
14.5	21.1	-.03	.11	-.001	.24	87	68

O C C PAXTON 730P

COLEMAN CHARLO 0256

BOHI ABIGALE 6014

LLSF UPRISING Z925

CMB POLLY B428

CMB POLLY P28

- Here's a 3/8 Sim that is as stout as you can make one
- Easy going bull with good length and thickness
- He's moderate and super easy fleshing; expect his offspring to thrive on minimal inputs



Coleman Charlo 0256, Sire



TJ Franchise 451D, Sire of Lots 16-18

LOT 16 Gonsior Copyright M14



Homo Black Homo Polled 1/2 SM 1/2 AN Bull

#4442543 • Tattoo: M14 • BD: 1/26/24 • Act. BW: 85 • Adj. WW: 657

CE	BW	WW	YW	ADG	MCE	MM	MWW	STAY
11	-.1	61	93	.20	2	21	52	19
15%								
DOC	CW	YG	MARB	BF	REA	API	TI	
13.0	31.9	.03	.29	.024	.39	128	68	
20%								

CCR COWBOY CUT 5048Z
TJ FRANCHISE 451D
 TJ MISS NET WORTH U11
 SS EBONY'S GRANDMASTER
LHT MS GRANDMASTER 252Z
 264WX

- The last calf of our good 252Z cow
- Just like his sire, this bull is moderate, stout, sound and complete
- He could be calving ease and expect great daughters
- We'd also think his steer calves will be very efficient feeders

LOT 17 Gonsior Big League M20



Homo Black Homo Polled 1/2 SM 1/2 AN Bull

#4442549 • Tattoo: M20 • BD: 1/27/24 • Act. BW: 88 • Adj. WW: 590

CE	BW	WW	YW	ADG	MCE	MM	MWW	STAY
11	2.7	68	112	.28	4	17	51	11
DOC	CW	YG	MARB	BF	REA	API	TI	
13.9	24.3	-.01	.25	-.003	.22	110	68	
35%								

CCR COWBOY CUT 5048Z
TJ FRANCHISE 451D
 TJ MISS NET WORTH U11
 FBF1 COMBUSTIBLE
SC/RST GEORGINA B46
 CHAMPION HILL GEORGINA 6337



- Big League is another Franchise that looks the part
- He's stout, moderate and huge hipped
- He'll make them easy fleshing and sound
- A good SimAngus™ choice

LOT 18 Gonsior Franchise Fee M9



Homo Black Homo Polled 1/2 SM 1/2 AN Bull

#4442538 • Tattoo: M9 • BD: 1/23/24 • Act. BW: 90 • Adj. WW: 722

CE	BW	WW	YW	ADG	MCE	MM	MWW	STAY
12	.7	67	103	.23	4	24	57	9
DOC	CW	YG	MARB	BF	REA	API	TI	
15.4	19.5	-.05	.54	-.002	.28	125	77	
20%								

CCR COWBOY CUT 5048Z
TJ FRANCHISE 451D
 TJ MISS NET WORTH U11
 SCHIEFELBEIN EFFECTIVE 61
GONSIOR DELORES D302
 DILLONS TIME FOR KISSES



- Franchise is a very consistent sire, and M9 follows that pattern
- Modest size with good growth, feet and fleshing ability
- Balanced EPDs with an outcross pedigree
- He'll be easy doing and steers should be good feeders



O C C Juanada 673N, Grandam



Gonsior Lanaia L85, Maternal Sister

LOT 19 **Gonsior Private Ryan M25**



Homo Black Homo Polled Baldy 5/8 SM 11/32 AN 1/32 CS Bull

#4442554 • Tattoo: M25 • BD: 1/28/24 • Act. BW: 83 • Adj. WW: 781

CE	BW	WW	YW	ADG	MCE	MM	MWW	STAY
10	3.0	86	129	.27	1	15	58	10
		20%	30%					

DOC	CW	YG	MARB	BF	REA	API	TI
12.1	25.3	-.34	.08	-.073	.71	103	75
		15%		10%			

WLE COPACETIC E02
ROCKING P PRIVATE STOCK H010
 RP/MP BUILT TO LOVE A021
 LLSF UPRISING Z925
GONSIOR JUNES RISING F9
 O C C JUANADA 673N

- Private Ryan is a big ole stout, growth option
- His dam, F9, is one of our very best 1/2 blood cows from the OCC Juanada donor
- His sire, Private Stock, makes them powerful
- Top 20% YW and top 30% WW
- Though his EPDs don't necessarily show it, we'd bet his daughters will be super females
- His super sister was a high seller last year



LOT 20 **Gonsior Cupid's Arrow M26**



Homo Black Dbl Polled Baldy Purebred SM Bull

#4442555 • Tattoo: M26 • BD: 1/28/24 • Act. BW: 79 • Adj. WW: 685

CE	BW	WW	YW	ADG	MCE	MM	MWW	STAY
12	-.8	80	114	.21	5	27	67	14
		20%				25%	35%	

DOC	CW	YG	MARB	BF	REA	API	TI
15.6	25.7	-.31	.32	-.066	.66	141	87
		10%	30%				30%

HTP/SVF DURACELL T52
THSF LOVER BOY B33
 RP/MP RIGHT TO LOVE 015U
 WLE UNO MAS X549
GONSIOR EVETTE E6
 SS CLASSY

- Another of several good Lover Boy sons
- Dam E6 is one of our favorite baldy cows
- Use him however you wish; great female maker, great feeder steers, calving ease
- A true combination bull
- His docility reads top 10%, and just like his mom, he's a relaxed, cool cat



LOT 21 **Gonsior Bold N Loud M27**



Homo Black Dbl Polled Purebred SM Bull

#4442556 • Tattoo: M27 • BD: 1/29/24 • Act. BW: 80 • Adj. WW: 724

CE	BW	WW	YW	ADG	MCE	MM	MWW	STAY
10	1.3	73	109	.22	3	20	57	13

DOC	CW	YG	MARB	BF	REA	API	TI
5.2	24.2	-.36	.11	-.075	.72	121	75

JSUL SOMETHING ABOUT MARY 8421
GCC BOLD MOVE 136J
 JS BLACK SATIN 9B
 W/C EXECUTIVE ORDER 8543B
GONSIOR SHEZA BABE G1
 MISS CCF SHEZA BABE U2

- Bold and Loud is a good looker out of the GCC stud, Bold Move
- Sire's dam is one of the great donors in our breed
- We like this one for both great steers and keeper daughters
- He's correct, sound, powerful and jet black



Miss CCF Sheza Babe U2, Grandam



HS Sweet Gem X141N, Great Grandam



Hook's Galileo 210G, Sire

LOT 22 Gonsior 9M

Homo Black Homo Polled 3/4 SM 1/4 AN Bull

#4359777 • Tattoo: 9M • BD: 1/30/24 • Act. BW: 65 • Adj. WW: N/A



- Here's a Galileo out of a good Sweet Gem granddaughter that has a fabulous look
- Surefire calving ease while maintaining top 30-35% growth
- Basically an all purpose, combination option
- He boasts 8 EPDs in the top 15% of the breed, with marbling top 10%
- Notice API and TI are both in the top 5% of the breed
- Grandma Dugan and Tres are partnered on this one Offered with L. Dugan

CE	BW	WW	YW	ADG	MCE	MM	MWW	STAY
17	-2.3	84	127	.27	9	29	71	16
15%	20%	30%	35%		20%	15%	15%	
DOC	CW	YG	MARB	BF	REA	API	TI	
13.9	39.6	-.14	.82	-.032	.58	173	100	
35%	35%		10%			5%	5%	

BRIDLE BIT ECLIPSE E744
HOOK'S GALILEO 210G
 HOOK'S EVITA 18E
 ELM-MOUND/GS LD D340
GONSIOR KAYLENE K84
 SS FAWN G650

LOT 23 Gonsior Roadwarrior M31

Homo Black Homo Polled 5/8 SM 3/8 AN Bull

#4442559 • Tattoo: M31 • BD: 1/30/24 • Act. BW: 75 • Adj. WW: 686



CE	BW	WW	YW	ADG	MCE	MM	MWW	STAY
16	-1.9	76	108	.20	7	26	64	17
20%	20%					30%		
DOC	CW	YG	MARB	BF	REA	API	TI	
12.6	2.9	-.02	.40	-.006	.17	144	83	

TJ FROSTY 318E
TJ CHIEF 460G
 TJ 52A
 TJ FRANCHISE 451D
GONSIOR KLASSICAL K4
 RAINS CAMMO D81

- Sired by TJ Chief, this is a moderate, solid black bull
- He's homo polled and would be a top calving ease choice
- His offspring should flesh easy and feed well



TJ Chief 460G, Sire



LOT 24 Gonsior Anchors Away M32

Homo Black Dbl Polled Purebred SM Bull

#4454706 • Tattoo: M32 • BD: 2/1/24 • Act. BW: 82 ET • Adj. WW: 750



CE	BW	WW	YW	ADG	MCE	MM	MWW	STAY
7	5.1	83	122	.25	3	26	68	12
		35%				25%	30%	
DOC	CW	YG	MARB	BF	REA	API	TI	
11.5	31.7	-.32	.39	-.062	.80	126	83	
		20%						

CCR COWBOY CUT 5048Z
CCR ANCHOR 9071B
 CCR MS BARB 2120Z
 MR HOC BROKER
WAGR PRECIOUS 202Z
 3C MELODY M668 BZ

- He's a good looking Anchor son
- M32 is a purebred performance bull
- He has a stretchy, growthy structure
- Top 20% marbling bull
- Dam is the 2022 donor who has made high sellers in the past



WAGR Precious 202Z, Dam





M4 Mystic Lady 04E, Dam



OMF Journeyman J24, Sire

LOT 25 Gonsior Part O The Journey M33

Homo Black Homo Polled Baldy Purebred SM Bull
 #4442560 • Tattoo: M33 • BD: 2/2/24 • Act. BW: 90 ET • Adj. WW: 778



CE	BW	WW	YW	ADG	MCE	MM	MWW	STAY
11	2.2	97	150	.33	6	21	70	20
		5%	10%	10%			20%	15%
DOC	CW	YG	MARB	BF	REA	API	TI	
15.0	21.2	-.39	.17	-.066	.87	147	91	
		15%				30%	20%	

MR SR MIC DROP G1534
OMF JOURNEYMAN J24
 OMF DEKA D23
 CCR WIDE RANGE 9005A
M4 MYSTIC LADY 04E
 SFI/GPAR FANCY COWGIRL

- Part O The Journey is a homo black homo polled stud
- He's a phenotypic load, and reads that on paper too
- Use him in growth scenario for performance maximizing steers
- Baldy face will make pretty replacements too
- Top 10% EPDs for WW, YW, and ADG, with a top 20% TI
- An ET son of a really good Marple donor



LOT 26 Gonsior Transformer M54

Homo Black Ddbl Polled 1/2 SM 1/2 AN Bull
 #4442578 • Tattoo: M54 • BD: 2/10/24 • Act. BW: 85 • Adj. WW: 772



CE	BW	WW	YW	ADG	MCE	MM	MWW	STAY
16	.5	83	124	.25	9	23	64	7
		30%				25%		
DOC	CW	YG	MARB	BF	REA	API	TI	
12.1	31.1	-.17	.76	-.020	.64	144	94	
			10%				15%	

G A R MOMENTUM
G A R TRANSCENDENT
 G A R PROPHET 2685
 W/C RELENTLESS 32C
GONSIOR RELENTING F17
 HALLS BE STEEL MY HEART

- Here's another son of GAR Transcendent that should work across scenarios
- Transformer reads calving ease with big growth
- He offers a whopping top 15% TI, with marbling in the top 10%
- Make daughters or feed them out...with extra growth - 110 ratio at weaning
- Dam F17, a Relentless out of Broker's sister, is top shelf
- Maternal Sister sells as lot 89



Halls Be Steel My Heart, Grandam



LOT 27 Gonsior Drives Me Crazy M35

Homo Black Ddbl Polled Purebred SM Bull
 #4442562 • Tattoo: M35 • BD: 2/2/24 • Act. BW: 80 • Adj. WW: 692



CE	BW	WW	YW	ADG	MCE	MM	MWW	STAY
15	-1.6	65	100	.22	9	20	53	17
	15%	10%			10%			
DOC	CW	YG	MARB	BF	REA	API	TI	
17.5	17.4	-.22	.42	-.033	.53	154	82	
		3%	20%			20%		

HHS MR ENTOURAGE 867B
LCDR RESERVE 210J
 LCDR MS ECHO 43E
 FHEN HALFTIME A127
TK CRAZY N LOVE 1G
 HILB CRAZY N LOVE A475S

- Reserve sired bull with growth
- He's also a top choice for calving ease
- Use him in any scenario; another combination bull
- Dam 1G is an own daughter of the great Crazy N Love



HILB Crazy N Love A475S, Grandam



G A R Transcendent, Sire

LOT 28 Gonsior Translucent M42



Homo Black Homo Polled 3/8 SM 5/8 AN Bull
#4442568 • Tattoo: M42 • BD: 2/5/24 • Act. BW: 79 • Adj. WW: 663

CE	BW	WW	YW	ADG	MCE	MM	MWW	STAY
16	-1.5	74	116	.26	8	27	64	12
20%	25%					25%		
DOC	CW	YG	MARB	BF	REA	API	TI	
14.2	28.4	-.13	.93	-.039	.34	160	94	
30%		3%			15%	15%		

G A R MOMENTUM
G A R TRANSCENDENT
G A R PROPHET 2685
KAPPES MILE HIGH B11
GONSIOR 806A'S MILO F308
GONSIOR LANAS 806BLAZE

- A SimAngus™ stud by GAR Trcendent
- Phenotypically, what would you change about Translucent? What a look!
- Big calving ease, good growth, high API/TI combination bull
- Wanna go on the grid with calves...he's top 3% marbling
- This one can be bought with extreme confidence
- Great mother from the timeless 806A cow family; he should be homo black

LOT 29 Gonsior Stockman M46



Homo Black Dbl Polled Purebred SM Bull
#4442571 • Tattoo: M46 • BD: 2/6/24 • Act. BW: 83 • Adj. WW: 714

CE	BW	WW	YW	ADG	MCE	MM	MWW	STAY
13	2.7	73	110	.23	5	16	52	6
35%								
DOC	CW	YG	MARB	BF	REA	API	TI	
6.4	23.8	-.41	.34	-.061	1.00	121	79	
		25%			25%			

WLE COPACETIC E02
ROCKING P PRIVATE STOCK H010
RP/MP BUILT TO LOVE A021
W/C RELENTLESS 32C
GONSIOR RELENTING F21
JF EMPRESS 1247Y

- Stockman is a Private Stock out of a really good Relentless cow
- Touch more frame and growth
- They should grow fast and feed well
- From the Empress cow family



Rocking P Private Stock H010, Sire



LOT 30 Gonsior Epicenter M36



Homo Black Dbl Polled 3/4 SM 1/4 AN Bull
#4442563 • Tattoo: M36 • BD: 2/3/24 • Act. BW: 85 • Adj. WW: 679

CE	BW	WW	YW	ADG	MCE	MM	MWW	STAY
9	3.0	89	134	.28	5	26	70	15
		15%	25%			35%	20%	
DOC	CW	YG	MARB	BF	REA	API	TI	
1.0	32.2	-.25	.23	-.063	.57	120	81	
		35%		15%				

WS ALL-AROUND Z35
OMF EPIC E27
OMF TIME LESS B100
GONSIOR UNIFIED F66
GONSIOR THE KING K78
GONSIOR NEWSLADY U204

- Good SimAngus™ Epic sired bull
- He's all black and moderate
- WW and YW are top 15% and 25%
- He's made to be a terminal cross sire



OMF EPIC E27, SIRE



M4 Ms Entirety 127J, Dam



Mr SR Mic Drop G1534, Sire



M4 Ms Finalist Z45E, Grandam

LOT 31 Gonsior Showtime M48

Homo Black Homo Polled Baldy 3/4 SM 1/4 AN Bull
#4442573 • Tattoo: M48 • BD: 2/7/24 • Act. BW: 65 • Adj. WW: 810

CE	BW	WW	YW	ADG	MCE	MM	MWW	STAY
16	-1.7	98	161	.39	9	25	74	19
20%	25%	4%	3%	3%	20%	10%	15%	
DOC	CW	YG	MARB	BF	REA	API	TI	
18.7	5.2	-.35	.30	-.065	1.11	155	96	
3%	15%	15%		15%	3%	20%	10%	

MR SR 71 RIGHT NOW E1538
MR SR MIC DROP G1534
MISS SR C1534
HOOK'S EAGLE 6E
M4 MS ENTIRETY 127J
M4 MS FINALIST Z45E



- This homo black homo polled baldy is one to wait for
- He's growthy, yet very complete
- Look at this EPD profile! He boasts 14 EPDs in the top 20%, with 5 in the top 4% of the breed; 155 API, 96 TI
- Top it off with an 810# AWW, to ratio at 116 after a modest 65# BW
- Dam 127J is a super young cow from our friends, the Marple family
- Keep every daughter, successfully finish every steer...they won't miss
- A very top combination bull choice



LOT 32 Gonsior Kraftsman M53

Homo Black Dbl Polled Baldy 1/2 SM 1/2 AN Bull
#4442577 • Tattoo: M53 • BD: 2/10/24 • Act. BW: 89 • Adj. WW: 714

CE	BW	WW	YW	ADG	MCE	MM	MWW	STAY
9	-.6	81	130	.31	4	29	71	19
		30%	30%			15%	15%	10%
DOC	CW	YG	MARB	BF	REA	API	TI	
12.4	46.7	-.05	.51	.017	.78	149	87	
	20%		35%		30%	30%	35%	

SITZ RESILIENT 10208
CONNELY CRAFTSMAN
BLACK CATHY OF CONANGA 8521
LMF MOVIN FORWARD
DMGC MS MF ET 151Y
MSR 5521R OF 2094M CHOC

- If you like them super gentle, Kraftsman is a top choice
- He's a baldy SimAngus™ stud
- Another Craftsman sired bull with big growth and high maternal qualities
- His dam is a 14 year old grandma from Deon Goecke that just keeps producing



CONNELY CRAFTSMAN, SIRE

LOT 33 Gonsior Crafty M40

Hetero Black Dbl Polled 3/8 SM 5/8 AN Bull
#4442567 • Tattoo: M40 • BD: 2/5/24 • Act. BW: 86 • Adj. WW: 681

CE	BW	WW	YW	ADG	MCE	MM	MWW	STAY
8	2.0	83	140	.36	5	34	77	11
		30%	15%	10%		2%	4%	
DOC	CW	YG	MARB	BF	REA	API	TI	
12.6	54.3	.03	.43	.021	.66	120	82	
	10%							

SITZ RESILIENT 10208
CONNELY CRAFTSMAN
BLACK CATHY OF CONANGA 8521
GONSIOR UFS POWER
GONSIOR WINE N DINE W38
BBB MISS ZEUS 107F

- Here's a larger framed/longer 3/8 blood by Select Sires' leader, Conneally Craftsman
- Longevity bred in...his dam is 16 years old this year
- Another high growth choice
- Crafty is also top 2% maternal milk and top 4% maternal weaning weight





LCDR Reserve 210J, Sire



M4 Ms Authentic Z6G, Dam

LOT 34 Gonsior Restore The Order M34 EPDs Genomic Enhanced

Homo Black Dbl Homo Polled Baldy 3/4 SM 1/4 AN Bull
 #4442561 • Tattoo: M34 • BD: 2/2/24 • Act. BW: 87 ET • Adj. WW: 739

CE	BW	WW	YW	ADG	MCE	MM	MWW	STAY
13	.5	92	137	.28	7	24	70	19
		10%	20%				20%	15%
DOC	CW	YG	MARB	BF	REA	API	TI	
15.5	37.7	-.20	.67	-.005	.96	163	97	
15%			15%		10%	15%	10%	

HHS MR ENTOURAGE 867B
LCDR RESERVE 210J
 Lcdr MS ECHO 43E
 G A R SURE FIRE
M4 MS AUTHENTIC Z6G
 KSU MISS SHEAR FORCE 6Z

- Restore The Order is a growthy baldy that'll make friends
- Big, stout, correct and powerful
- ET son of another Marple donor
- 9 EPDs rank top 20% of breed
- These Reserve sons have a bit more frame and growth
- He reads like he'll have calving ease built in too
- 163 API and 97 TI; top 15% and 10% respectively

LOT 34 & 35 FULL BROTHERS!

LOT 35 Gonsior Remodeler M55 EPDs Genomic Enhanced

Homo Black Homo Polled 3/4 SM 1/4 AN Bull
 #4442579 • Tattoo: M55 • BD: 2/11/24 • Act. BW: 78 ET • Adj. WW: 681

CE	BW	WW	YW	ADG	MCE	MM	MWW	STAY
12	.0	83	131	.30	7	24	65	20
		30%	30%	35%			35%	10%
DOC	CW	YG	MARB	BF	REA	API	TI	
15.9	33.9	-.07	.62	.011	.64	159	91	
15%			20%			15%	20%	

HHS MR ENTOURAGE 867B
LCDR RESERVE 210J
 Lcdr MS ECHO 43E
 G A R SURE FIRE
M4 MS AUTHENTIC Z6G
 KSU MISS SHEAR FORCE 6Z

- Sired by Reserve, M55 shows growth while maintaining calving ease
- He's growthy and stretchy, out of the Marple donor cow
- Top 20% marbling bull, offspring should feed well
- Top 15% with a 159 API
- Homo black and Homo polled



M4 Ms Authentic Z6G, Dam



LCDR Reserve 210J, Sire



LOT 36 Gonsior North Star M58 EPDs Genomic Enhanced

Hetero Black Dbl Polled 3/4 SM 1/4 AN Bull
 #4442582 • Tattoo: M58 • BD: 2/14/24 • Act. BW: 87 • Adj. WW: 769

CE	BW	WW	YW	ADG	MCE	MM	MWW	STAY
12	.9	86	121	.22	6	28	70	16
		25%				20%	20%	
DOC	CW	YG	MARB	BF	REA	API	TI	
17.0	37.4	-.35	.47	-.064	.94	142	88	
10%		15%		15%	15%		30%	

HOOK'S FULL FIGURES 11F
FIVE STAR JACKSON J10
 KBHR F316
 WAGR DREAM CATCHER 03R
GONSIOR J-CATCHER Z53
 O C C JUANADA 673N

- Big growth with moderate calving ease
- The 5 Star Jacksons are bred for performance
- This stretchy stud ratio'd 110 at weaning; we like these to press the scales down
- Dam from the OCC Juanada cow family; great halfblood female



Five Star Jackson J10, Sire





LOT 37 TBL/GS Special K M605

Hetero Black Dbl Polled Purebred SM Bull
 #4444373 • Tattoo: M605 • BD: 2/12/24 • Act. BW: 85 • Adj. WW: 658

CE	BW	WW	YW	ADG	MCE	MM	MWW	STAY
12	1.6	83	117	.21	6	29	70	20
		35%				15%	20%	10%

DOC	CW	YG	MARB	BF	REA	API	TI
11.4	27.9	-.32	.15	-.071	.70	141	82

TJ TEARDROP 783F
TJ 50K 485H
 TJ 92C
 WS BEEF MAKER R13
TBL/GS BEEF LADY D605
 MAGNETIC LADY W1



- TJ 50K sired growth bull
 - He's out of a good Magnetic Lady granddaughter
 - Offers top 15% MM and top 10% Stay
 - He's stout, masculine and very balanced with eye appeal
- Offered with T & B Livestock*



TJ 50K 485H, Sire



LOT 39 Gonsior Queen's Guard M68

Homo Black Dbl Polled Purebred SM Bull
 #4442590 • Tattoo: M68 • BD: 2/21/24 • Act. BW: 77 • Adj. WW: 740

CE	BW	WW	YW	ADG	MCE	MM	MWW	STAY
13	2.4	89	136	.29	7	21	65	18
		35%	20%	25%	35%			30%

DOC	CW	YG	MARB	BF	REA	API	TI
8.5	48.0	-.30	.44	-.066	.91	156	92
	10%		15%			20%	20%

CLRS GUARDIAN 317G
GONSIOR ARMED GUARD K13
 HS/TBSF BREATHLESS 8Y
 NLC GEN TEN 82E
ROCKIN H MS.GENTENH71
 LHT MS NET WORTH 56Z



- Queen's Guard is bred for growth with a sensible birth weight
- Good, stout frame and pleasing to look at
- He started at 77# and grew well, adjusting at 740# to ratio 106
- Top 20% or better for weaning, yearling, carcass weight, marbling, API and TI
- He should raise performance offspring

LOT 38 Gonsior American Anthem M65

Hetero Black Dbl Polled Baldy Purebred SM Bull
 #4442587 • Tattoo: M65 • BD: 2/18/24 • Act. BW: 79 • Adj. WW: 709

CE	BW	WW	YW	ADG	MCE	MM	MWW	STAY
14	.9	87	132	.28	7	18	61	16
	25%		25%	30%				

DOC	CW	YG	MARB	BF	REA	API	TI
1.4	37.3	-.31	.49	-.057	.87	159	93
	25%		15%			20%	15%

HHS MR ENTOURAGE 867B
LCDR ANTHEM 33K
 WS MISS SUGAR C4
 CLRWTR SHOCK FORCE W94C
JF EBONYS JOY 3142A
 SOSF EBONYS JOY L-123

- American Anthem is a baldy combination bull
- Expect his calves to come easy and grow fast
- Soggy, complete, skeletally sound and perfectly balanced
- He's top 25% or better in 7 EPD categories
- Top 15% in marbling and TI, along with a 159 API
- From the great Ebony's Joy family



SOSF Ebony's Joy L-123, Grandam



LCDR Reserve 210J, Sire

LOT 40

Gonsior First Revision M66

Homo Black Homo Polled Baldy 3/4 SM 1/4 AN Bull
#4442588 • Tattoo: M66 • BD: 2/19/24 • Act. BW: 75 • Adj. WW: 737



- Percentage breeder bull here
- This goggle-eyed stud is perfect from every angle
- You'll appreciate his style, coupled with his overall completeness
- Moves well, big ole rib, and a great attitude
- His dam, from friend and customer Tim Mason, hits every year
- Remember the Reserves pack extra growth punch, to go with his calving ease profile
- 8 EPDs in top 25% of the breed, with low birth and big growth
- Top 4% API, TI and Marbling
- He'll check the boxes for the most discriminating buyers

CE	BW	WW	YW	ADG	MCE	MM	MWW	STAY
15	-2.3	84	130	.29	10	23	65	17
20%	20%	30%	30%		15%			25%

DOC	CW	YG	MARB	BF	REA	API	TI
13.7	37.7	-.19	.89	-.014	.87	178	101
35%			4%		20%	4%	4%

HHS MR ENTOURAGE 867B
LCDR RESERVE 210J
LCDR MS ECHO 43E
HOOK'S BEACON 56B
LSS BARBARAMERE 921G
MA BARBARAMERE 1210

LOT 41

TBL/GS 50 Cent M30

DbI Black DbI Polled Purebred SM Bull
#4444367 • Tattoo: M30 • BD: 2/19/24 • Act. BW: 84 • Adj. WW: 588

CE	BW	WW	YW	ADG	MCE	MM	MWW	STAY
11	1.7	81	125	.27	6	25	66	17
			35%	35%		35%	35%	35%

DOC	CW	YG	MARB	BF	REA	API	TI
1.9	34.4	-.11	.10	-.033	.40	131	79
35%							

TJ TEARDROP 783F
TJ 50K 485H
TJ 92C
W/C UNITED 956Y
GONSIOR/BD L24'S UNITED
JM DICE-H25-L24

- TJ 50K son that is complete from every angle
- Notice his great front, sound structure and big hip
- His dam, E30, is a maternal sister to the great Miley Cottontail
- This guy should make good feeder steers and showy, top notch daughters

Offered with partners T & B Livestock & B/D



Miley Cottontail, Dam's Maternal Sister



LOT 42

Gonsior Redone M69

Homo Black DbI Polled Purebred SM Bull
#4442591 • Tattoo: M69 • BD: 2/22/24 • Act. BW: 82 • Adj. WW: 686



CE	BW	WW	YW	ADG	MCE	MM	MWW	STAY
10	1.6	86	130	.28	7	16	58	16
		30%	25%	30%	35%			

DOC	CW	YG	MARB	BF	REA	API	TI
11.8	39.4	-.26	.38	-.029	.99	146	88
20%			25%		25%	35%	30%

HHS MR ENTOURAGE 867B
LCDR RESERVE 210J
LCDR MS ECHO 43E
FBFS WHEEL MAN 649W
GONSIOR WHEEL O GLITTER
HHSF HILDA 2W97

- Another growthy Reserve sired bull who's dam is from the Glitter family
- Very complete bull with no holes
- Performance is bred in, along with top marbling
- Put his fat calves on the grid for added value



K-LER DOLLY'S QUEEN 609D, DAM



Gonsior Dolly's Queen M30, Full Sister



Gonsior Keepin' The Faith L3, Full Brother



Gonsior Keepin' It Real L45, \$8,000 Full Brother

LOT 43 Gonsior Dollys King M67

Homo Black Homo Polled 3/4 SM 1/4 AN Bull

#4442589 • Tattoo: M67 • BD: 2/21/24 • Act. BW: 87 ET • Adj. WW: 700

CE	BW	WW	YW	ADG	MCE	MM	MWW	STAY
12	2.3	86	130	.27	5	25	68	15
		20%	30%				25%	

DOC	CW	YG	MARB	BF	REA	API	TI
12.2	36.6	-.31	.48	-.053	.89	139	87
		20%		25%	15%		35%

CCS/WHF OL`SON 48F
JS KEEPIN IT 90 39H
 CLRS DAIRY QUEEN 606D
 W/C EXECUTIVE ORDER 8543B
K-LER DOLLY'S QUEEN 609D
 GW MISS GPRD 028X



- We didn't get a picture of this guy, but he takes a backseat to no one
- Full brother to Keepin' The Faith and Keepin' It Real; high sellers last year to T&B Livestock, NE and C. Castello, CA
- Flush sisters were also high sellers to T & B, and Bose Cattle, NE
- He's stout and moderate, with performance bred in...his calves will be growthy
- Dam is the famous Dollys Queen, mother of Fort Knox
- King wouldn't be out of place in a purebred operation, or could make great steers
- Top 20% WW, yield grade and REA, along with top 25-30% MWW, BF and yearling



LOT 44 Gonsior Unprecedented M70

Homo Black Homo Polled Purebred SM Bull

#4442592 • Tattoo: M70 • BD: 2/23/24 • Act. BW: 90 • Adj. WW: 868

CE	BW	WW	YW	ADG	MCE	MM	MWW	STAY
11	2.0	102	152	.31	5	26	77	13
		2%	5%	15%		30%	4%	

DOC	CW	YG	MARB	BF	REA	API	TI
17.2	4.3	-.43	.13	-.081	1.12	134	93
4%	20%	30%		30%	10%		15%

HHS MR ENTOURAGE 867B
LCDR RESERVE 210J
 LCDR MS ECHO 43E
 KAPPES MILE HIGH B11
GONSIOR FRANCINE F28
 GONSIOR CRYSTAL C39



- One of the growth kings of the offering
- Came off his dam at 950#, adjusted to 868#, and ratio'd a whopping 125
- Look at his growth EPDs... 102 WW and 152 YW – top 2% and top 5%
- Also notice the top scores in ADG, MWW, REA and top 15% TI
- We like this one to make great females and the best performance feedlot cattle
- Dam F28, from the great 806A cow family, is top-shelf



LOT 45 Gonsior He's Paid In Full M74

Homo Black Hetero Polled Purebred SM Bull

#4442596 • Tattoo: M74 • BD: 2/25/24 • Act. BW: 86 • Adj. WW: 789

CE	BW	WW	YW	ADG	MCE	MM	MWW	STAY
13	2.7	74	105	.19	6	23	60	15

DOC	CW	YG	MARB	BF	REA	API	TI
15.7	27.6	-.38	.14	-.036	1.15	126	75
10%					10%		

LLSF PAYS TO BELIEVE ZU194
MR CCF BILLS PAID
 MISS CCF JESTRESS B79
 SC PAY THE PRICE C11
GONSIOR FABIAN F20
 GONSIOR DIRECTIVE D12



- Don't miss Paid In Full; he ratio'd 113 at weaning
- This stud's maternal brother sold well last year to Clay Hartman, NE
- Dam F20 is one of our very best cows
- Top 10% REA and docility bull; expect growthy, soft steers and nice replacement heifers
- Sire Bills Paid always adds body and makes efficient looking cattle



Gonsior Controlled Chaos L8, Maternal Brother



LOT 46

Gonsior Ant Man M77

Homo Black Dbl Polled Purebred SM Bull

#4442598 • Tattoo: M77 • BD: 2/25/24 • Act. BW: 92 • Adj. WW: 727



- Armed Guard son that sure looks the part
- Dam goes back to Broker's maternal cow family
- Offers balanced numbers; he ratio'd 105 at weaning
- Thick made, moderate, and sound with a fabulous look

CE	BW	WW	YW	ADG	MCE	MM	MWW	STAY
10	2.1	76	114	.24	5	19	57	13
DOC	CW	YG	MARB	BF	REA	API	TI	
4.7	17.6	-.28	.33	-.036	.69	131	80	
			30%					

CLRS GUARDIAN 317G
GONSIOR ARMED GUARD K13
 HS/TBSF BREATHLESS 8Y
 MR HOC BROKER
RAH FRANCESCA 310F
 JM ISABELLA W2

LOT 47

Gonsior Shocker M83

Homo Black Dbl Polled 3/4 SM 1/4 AN Bull

#4442603 • Tattoo: M83 • BD: 2/29/24 • Act. BW: 82 • Adj. WW: 711



CE	BW	WW	YW	ADG	MCE	MM	MWW	STAY
12	-1.3	68	98	.18	4	25	59	22
	30%		30%					2%
DOC	CW	YG	MARB	BF	REA	API	TI	
15.5	27.2	-.32	.16	-.070	.69	133	72	
15%		20%		15%				

HOOKS SHEAR FORCE 38K
GONSIOR SHEARSHOCK F016
 HILB DAKOTA LOVE A016S
 CONNEALY THUNDER
GONSIOR CAITLYN C27
 JF JOLIETTE 4119P

- Ultra-complete, stylish, very well balanced bull
- Sired by Shearshock, our Shear Force son that worked very well
- Expect a long life as he ranks top 2% for stayability
- Should be a good calving ease choice as well as maternal

LOT 48

Gonsior Soldier On M84

Hetero Black Dbl Polled Baldy 3/4 SM 1/4 AN Bull

#4442604 • Tattoo: M84 • BD: 2/29/24 • Act. BW: 88 • Adj. WW: 720



CE	BW	WW	YW	ADG	MCE	MM	MWW	STAY
11	3.0	83	130	.29	7	19	61	12
		30%	30%					
DOC	CW	YG	MARB	BF	REA	API	TI	
11.3	59.7	-.52	.17	-.098	1.50	113	77	
	4%	1%		2%	1%			

HOOK'S BEACON 56B
GONSIOR THE GENERAL H393
 AS DIAMOND 20C
 S A V PRIORITY 7283
GONSIOR CHAMPAGNE C6
 GONSIOR BLAZING Y208

- The Generals all have a look; this one adds the cool baldy face
- He's got big growth potential bred in
- Interesting carcass numbers, ranking top 1% in YG and REA, and top 2% in backfat
- Ratio'd 104 at weaning... expect performance offspring that work



KA TCF Independence S30L, Grandam



Gonsior L36, Maternal Sister

LOT 49 Gonsior Generational Look M94

Hetero Black Dbl Polled 3/4 SM 1/4 AN Bull
 #4442614 • Tattoo: M94 • BD: 3/4/24 • Act. BW: 89 • Adj. WW: 787

CE	BW	WW	YW	ADG	MCE	MM	MWW	STAY
8	3.5	73	117	.28	4	24	60	14

DOC	CW	YG	MARB	BF	REA	API	TI
1.1	5.3	-.40	.10	-.068	1.24	106	68
	15%	5%		15%	1%		

HOOK'S BEACON 56B
GONSIOR THE GENERAL H393
 AS DIAMOND 20C
 SILVEIRAS WATCHOUT 0514
GONSIOR HOPSCOTCH H102
 KA TCF INDEPENDENCE S30L



- If you want bulls that are fun to look at, you'll love calves from *The General*
- So easy on the eyes, with good running gears, big muscle and power
- Top 5% YG and Top 1% for REA
- Steers will be growthy efficient feeders; daughters will make the replacement cut
- From the Independence cow family, dam had a high selling daughter last year



LOT 50 TBL/GS Yellowstone M395

Dbl Black Dbl Polled 3/4 SM 1/4 AN Bull
 #4444372 • Tattoo: M395 • BD: 3/3/24 • Act. BW: 84 • Adj. WW: 677

CE	BW	WW	YW	ADG	MCE	MM	MWW	STAY
12	1.2	85	130	.28	6	26	68	13
		25%	30%			35%	25%	

DOC	CW	YG	MARB	BF	REA	API	TI
11.5	37.8	-.23	.32	-.052	.68	127	83
				25%			

HOOKS TAURUS 24T
HOOK'S YELLOWSTONE 97Y
 HOOKS SHEYENNE 77S
 SCHIEFELBEIN EFFECTIVE 61
GONSIOR EFFICIENCY D395
 ETR LOVE ME NOW T523

- Good looking, high growth dude that ranks high in WW, YW and MWW
 - Well muscled, deep bodied, and perfect structured
 - You'll love this Yellowstone's steers and want to keep his daughters
 - From the Ebony Antoinette cow family
- Offered with T & B Livestock



Hook's Yellowstone 97Y, Sire



LOT 51 Gonsior Head 2 The Hills M92

Homo Black Dbl Polled Baldy Purebred SM Bull
 #4442612 • Tattoo: M92 • BD: 3/4/24 • Act. BW: 86 • Adj. WW: 726

CE	BW	WW	YW	ADG	MCE	MM	MWW	STAY
10	2.6	89	135	.29	5	27	72	11
		20%	20%	25%		20%	15%	

DOC	CW	YG	MARB	BF	REA	API	TI
13.4	43.4	-.43	.08	-.092	1.05	119	83
30%	15%	30%		20%	15%		

LCDR/KRJ INVENTION 138G
LEFS BLACK HILLS 016J
 LEFS MS POWERUP 775E
 KAPPES MILE HIGH B11
GONSIOR HEARTRATE H6
 GONSIOR CRYSTAL C39

- Goggle-eyed Black Hills son that is performance oriented
- Yet, we'd expect top notch replacements from him as well
- 7 EPDs in the top 20% of the breed
- Dam H6 is unquestionably one of our very top cows



LEFS Black Hills 016J, Sire





Gonsior Lana L11, Maternal sister selling as Lot 93



Gonsior The General H393, Sire

LOT 52 Gonsior Gene Seek M97

Homo Black Homo Polled Baldy Purebred SM Bull
#4442617 • Tattoo: M97 • BD: 3/6/24 • Act. BW: 86 • Adj. WW: N/A



- Gene Seek reads balanced numbers across the board
- He has the perfect blaze face, great hair, sound structure and a big foot
- He's one that had us staring all summer while watching him grow on pasture
- A favorite that will be a head-turner his whole life
- Dam is a beautiful, own daughter of the great Magnetic Lady

CE	BW	WW	YW	ADG	MCE	MM	MWW	STAY
12	1.6	79	112	.21	6	25	64	17
						35%		35%
DOC	CW	YG	MARB	BF	REA	API	TI	
9.2	3.2	-.49	.12	-.102	1.00	133	79	
		15%		10%	25%			

HOOK'S BEACON 56B
GONSIOR THE GENERAL H393
AS DIAMOND 20C
TKCC CLASSIFIED
SS EMERSON E785
SVF NJC MAGNETIC LDY M25

LOT 53 Gonsior Shock`Em All M110

Homo Black Dbl Polled Baldy Purebred SM Bull
#4442630 • Tattoo: M110 • BD: 3/14/24 • Act. BW: 88 • Adj. WW: 700



CE	BW	WW	YW	ADG	MCE	MM	MWW	STAY
12	1.2	66	85	.12	5	24	57	17
						35%		35%
DOC	CW	YG	MARB	BF	REA	API	TI	
13.1	28.2	-.51	-.02	-.094	1.09	119	68	
35%		10%		20%	15%			

HOOKS SHEAR FORCE 38K
GONSIOR SHEARSHOCK F016
HILB DAKOTA LOVE A016S
SS EBONY'S GRANDMASTER
WS MS GRANDMASTER B11
WS MS BUILT RIGHT Y41

- Another super eye-appealing baldy
- Functional, sound, and broody
- A Shearshock son that should make complete steers and keeper quality heifers
- Dam came from the Walsh herd



LOT 54 Gonsior Ferrari M111

Hetero Black Dbl Polled Purebred SM Bull
#4442631 • Tattoo: M111 • BD: 3/16/24 • Act. BW: 80 • Adj. WW: 769



CE	BW	WW	YW	ADG	MCE	MM	MWW	STAY
12	1.9	79	120	.26	3	29	69	18
						15%	25%	30%
DOC	CW	YG	MARB	BF	REA	API	TI	
15.5	18.4	-.40	.15	-.045	1.02	136	80	
15%				20%				

IR IMPERIAL D948
BAR CK RED EMPIRE 9153G
WS MISS NORTHSTAR B180
KAPPES MILE HIGH B11
GONSIOR FARRAH F31
SC DRIVEN MS RUBY Z8

- Good looking, hetero black stud by Red Empire
- Very easy going, with top 15% docility rank
- Daughters will be good milkers and performance oriented
- Steers should pack good growth; he weaned at 769# to ratio 110



Bar CK Red Empire 9153G, Sire





LOT 55

Gonsior Shockwaves M115

Hetero Black Dbl Polled 3/4 SM 1/4 AN Bull

#4442635 • Tattoo: M115 • BD: 3/23/24 • Act. BW: 90 • Adj. WW: 873

CE	BW	WW	YW	ADG	MCE	MM	MWW	STAY
7	4.2	86	133	.29	4	29	71	15
		20%	25%			15%	15%	

DOC	CW	YG	MARB	BF	REA	API	TI
12.9	39.6	-.36	.11	-.069	.97	109	75
	35%	10%		15%	10%		

HOOKS SHEAR FORCE 38K
GONSIOR SHEARSHOCK F016
 HILB DAKOTA LOVE A016S
 CONNEALY FINAL PRODUCT
MS MISS 501C
 MSR 3018N OF 1009L BREAK

- Shockwaves is soggy, correct and stout
- Pure growth bull that should sire performance
- Notice the 873# adjusted WW, which was right at the top and ratio'd 125
- He offers several high rankings in carcass as well
- Use him for big steers calves, but don't forget about the maternal potential of daughters



LOT 56 Gonsior Makin Red Waves M28

Red Homo Polled Purebred SM Bull

#4442557 • Tattoo: M28 • BD: 1/29/24 • Act. BW: 86 ET • Adj. WW: 643

CE	BW	WW	YW	ADG	MCE	MM	MWW	STAY
12	.8	70	105	.22	5	19	54	15

DOC	CW	YG	MARB	BF	REA	API	TI
9.5	12.6	-.48	.06	-.092	.82	124	73
	15%			20%			

CONLEY HIGH RISE F3
SWC RED WAVE 376J
 SWC GWENDOLYN 376G
 REMINGTON LOCK N LOAD 54U
RWA FIONA-ET
 SANDEEN DONNA 4838

- Makin Red Waves is maybe a favorite phenotypical bull in the sale
- Gage snapped a picture on pasture this summer that many of us stared at often
- He's got a massive hip, great depth of rib and an extra special front
- If one can make show heifers, boy he has that potential
- His full brother sells as Lot 57; which one is better?
- Donor dam is now a donor at CW, and she's a good one
- He could be a calving ease option, but is guaranteed to be pure style



RED BULLS



SWC Red Wave 376J, Sire



M28 as a calf



LOT 57

Gonsior Wave On Wave L914

Red Homo Polled Purebred SM Bull

#4373560 • Tattoo: L914 • BD: 9/15/23 • Act. BW: 85 ET • Adj. WW: 695

CE	BW	WW	YW	ADG	MCE	MM	MWW	STAY
13	-3.5	53	76	.15	5	19	46	18
	2%							30%

DOC	CW	YG	MARB	BF	REA	API	TI
9.5	8.0	-.31	.18	-.042	.62	137	70

CONLEY HIGH RISE F3
SWC RED WAVE 376J
 SWC GWENDOLYN 376G
 REMINGTON LOCK N LOAD 54U
RWA FIONA-ET
 SANDEEN DONNA 4838

- Wave on Wave has been a stud since his feet hit the ground
- Muscular, soft and powerful, with a definite presence
- Boy, he could produce fancy, stout offspring
- The Red Waves are an impressive group as a whole
- His donor dam, now owned by Bill Smith at CW Simmentals, is killer good
- Full brother sells as Lot 56
- Another very top CE prospect with a top 2% BW EPD
- Donor dam is from the Donna cow family.



RWA Fiona-ET, Dam



G13, \$21,000 Sibling



SK Red Sara 407B E107, Dam



LOT 58 **Gonsior Red Storm M98**

Red Homo Polled Baldy Purebred SM Bull

#4442618 • Tattoo: M98 • BD: 3/6/24 • Act. BW: 80 • Adj. WW: 783

CE	BW	WW	YW	ADG	MCE	MM	MWW	STAY
13	1.1	83	130	.29	7	28	69	17
30%		35%	30%	25%	35%	20%	25%	30%
DOC	CW	YG	MARB	BF	REA	API	TI	
13.4	29.2	-.49	.23	-.072	1.21	146	86	
30%		15%			4%	30%	35%	

IR IMPERIAL D948
BAR CK RED EMPIRE 9153G
 WS MISS NORTHSTAR B180
 KAPPES PENDLETON B6
SK RED SARA 407B E107
 SVS RED SARA 407B



- Need a red breeder bull? Red Storm has lots of great traits
- He's homo polled and every single genetic trait ranks top 50% or higher
- Donor dam E107 has had high sellers often, including her \$21,000 daughter G13
- Despite his sire not being high growth, Dam E107 took over & he ratio'd 112 at weaning
- He's big growth and borderline calving ease still
- Red Storm will have friends

LOT 59 **Gonsior Red Burns Bright M101**

Red Dbl Polled Purebred SM Bull

#4442621 • Tattoo: M101 • BD: 3/9/24 • Act. BW: 68 • Adj. WW: 643

CE	BW	WW	YW	ADG	MCE	MM	MWW	STAY
15	-1.4	70	100	.19	6	24	59	19
15%	15%							15%
DOC	CW	YG	MARB	BF	REA	API	TI	
11.2	16.5	-.38	.31	-.039	.97	153	82	
			30%		30%	25%		

IR IMPERIAL D948
BAR CK RED EMPIRE 9153G
 WS MISS NORTHSTAR B180
 CDI AUTHORITY 77X
ESG62
 ESZ44



- Moderate and efficient; a good calving ease choice
- Top 15% for calving ease, birthweight and stay
- Top 25% API and REA
- His dam, G62, always looks the part and has a perfect udder
- Full sister sells as Lot 99



J23, \$7500 Sibling



ESG62, Dam





CATTLE *Visions*

LOT 60 Bar CK Red Empire 9153G

Red Homo Polled Purebred SM Bull
#3766616 • Tattoo: 9153G • BD: 9/26/19 • Act. BW: ET • Adj. WW: 592

CE	BW	WW	YW	ADG	MCE	MM	MWW	STAY
17	-2.7	71	112	.25	10	29	64	20
5%	4%				3%	15%		15%
DOC	CW	YG	MARB	BF	REA	API	TI	
17.5	15.5	-.44	.54	-.027	1.24	174	92	
3%		25%	10%		3%	5%	20%	

IR IMPERIAL B772
IR IMPERIAL D948
IR MS DUAL FOCUS W086
CDI VERDICT 220Y
WS MISS NORTHSTAR B180
WS TAMAR Z179



- Tried and true...here's the old boy himself, the \$25,000 Red Empire
- He's calving ease extraordinaire, and his daughters are the cat's meow
- He offers 6 EPD categories in the top 5% of the breed include top 5% 174 API
- You will get full natural service rights as well as 50% revenue sharing semen interest
- Sells with a semen lease to Cattlevisions
- Buyer will also get 50% of the current conventional semen inventory
- Call with questions on this tremendous calving ease sire



ALL SIRED BY BAR CK RED EMPIRE 9153G



FANCY
OPEN
FEMALES



LOT 61 **Gonsior Valentine L918**

Homo Black Homo Polled Baldy Purebred SM Cow
#4373564 • Tattoo: L918 • BD: 9/23/23 • Act. BW: 90 • Adj. WW: 610

CE	BW	WW	YW	ADG	MCE	MM	MWW	STAY
8	3.4	81	113	.20	4	25	65	12

DOC	CW	YG	MARB	BF	REA	API	TI
1.8	23.7	-.50	.27	-.083	1.08	124	81
		10%	35%	30%	15%		

W/C LOADED UP 1119Y
W/C BANKROLL 811D
MISS WERNING KP 8543U
TRIPLE C SINGLETARY S3H
GONSIOR 9B
SS VALENTINE Z018

- Man, woman, and child... this one will catch your eye
- Donor 9B just keeps hitting to the fence
- A Bankroll from one of our most consistent donors ever...breeding her dam to a goat would still make a good one
- No flaws in this heifer
- This one can do big things - donor future - a can't miss
- Fabulous sister sells with a bull calf as Lot 88.
- Donor sister J902 was a \$11,000 high seller to Chris Castello in California

Offered with Bergman

LOT 62 **Gonsior Classy L903**

DbI Black DbI Polled 1/2 SM 1/2 AN Cow
#4373549 • Tattoo: L903 • BD: 9/7/23 • Act. BW: 78 • Adj. WW: 590

CE	BW	WW	YW	ADG	MCE	MM	MWW	STAY
13	-2.8	68	114	.29	8	21	55	10
	15%				35%			

DOC	CW	YG	MARB	BF	REA	API	TI
12.5	23.3	.02	.53	.012	.24	134	83
			30%				

BARSTOW CASH
SITZ DIVIDEND 649C
SITZ BARBARAMERE NELL 39A
SANDEEN UPPER CLASS 2386
SS CLASSY
DOUBLE R MISS 29G T18

- Soft, broodcow look
- Dam C224 is a next level milker from the Jet Top 29G cow family
- Calving ease with good performance
- Sitz Dividends make cows.



Sitz Dividend, Sire



LOT 63 **Gonsior Excellance L909**

DbI Black DbI Polled Purebred SM Cow
#4373555 • Tattoo: L909 • BD: 9/10/23 • Act. BW: 86 • Adj. WW: 570

CE	BW	WW	YW	ADG	MCE	MM	MWW	STAY
9	3.8	75	105	.19	5	12	49	18
							25%	

DOC	CW	YG	MARB	BF	REA	API	TI
8.1	26.3	-.31	-.19	-.058	.72	108	64

LLSF PAYS TO BELIEVE ZU194
MR CCF BILLS PAID
MISS CCF JESTRESS B79
BMR EXPLORER
REW MS EXCELLANCE
DOUBLE D BLK CHYNA

- Donor dam X1H has been one of our best and most consistent; this is her last natural calf
- Partner Chris Beins loves this heifer's siblings in production
- Very feminine and eye-appealing
- Bills Paid daughters flesh very easy



Mr CCF Bills Paid, Sire





W/C Bank On It, Maternal Brother



KS Miss Sequoia Y770, Dam



JBSF Logic 5E, Sire

LOT 64 CTN/GS London L067

Hetero Black Homo Polled Purebred SM Cow
#4416163 • Tattoo: L067 • BD: 11/27/23 • Act. BW: ET • Adj. WW: N/A

CE	BW	WW	YW	ADG	MCE	MM	MWW	STAY
8	3.0	70	98	.18	5	25	59	13

DOC	CW	YG	MARB	BF	REA	API	TI
9.3	11.2	-.39	.21	-.054	.83	118	73

JBSF LOGIC 5E
W/C RELENTLESS 32C
BROOKS STEELMAGNOLIA X57
HOOKS/KS SEQUOIA 355
KS MISS SEQUOIA Y770
ASR MS SUPER BALDY U851

- London is a Logic out of the famous Y770 Sequoia donor
- Very feminine, correct structured, big boned and fancy
- Certainly a front pasture cow prospect with donor potential
- She's a maternal sib to Bank On It and many others
- Dam has 162 recorded offspring
- L067 gets nervous when being worked



LOT 65 Gonsior Destiny L916

Hetero Black Dbl Polled Purebred SM Cow
#4373562 • Tattoo: L916 • BD: 9/17/23 • Act. BW: 71 • Adj. WW: 570

CE	BW	WW	YW	ADG	MCE	MM	MWW	STAY
17	-3.5	48	69	.13	8	20	44	19
5%	2%				15%			15%

DOC	CW	YG	MARB	BF	REA	API	TI
9.2	3.4	-.20	.50	.001	.56	160	75
			15%			15%	

SWC RED WAVE 376J
CONLEY HIGH RISE F3
SWC GWENDOLYN 376G
LLSF PAYS TO BELIEVE ZU194
GONSIOR BELIEVN DESTINY
JF EMPRESS 1247Y

- Very attractive Red Wave from a super P2B daughter
- Great look, skeletally right, and soft
- Big calving ease and maternal numbers
- The Red Waves are very consistent and hard to fault



SWC Red Wave 376J, Sire



LOT 66 Gonsior Mother Mary M6

Hetero Black Dbl Polled Purebred SM Cow
#4442535 • Tattoo: M6 • BD: 1/22/24 • Act. BW: 74 ET • Adj. WW: 633

CE	BW	WW	YW	ADG	MCE	MM	MWW	STAY
16	-1.2	75	102	.17	9	26	64	16
10%	15%				10%	30%		

DOC	CW	YG	MARB	BF	REA	API	TI
12.0	16.3	-.23	.48	-.065	.29	157	88
			15%			20%	25%

HTP/SVF DURACELL T52
THSF LOVER BOY B33
RP/MP RIGHT TO LOVE 015U
W/C EXECUTIVE ORDER 8543B
GONSIOR GYPSY ROSE G2
GONSIOR UNFORGOTTEN 24Y

- Donor Gypsy Rose G2, owned with Fred Bobolz, had a nice start
- Mother Mary has as great profile and striking look
- The Lover Boys work well across the country
- 157 API, with balanced numbers across the board.
- Top 10% calving ease/birth weight



Gonsior Gypsy Rose G2, Dam



ES Addiction KH93, Sire



Gonsior Precious G14, Dam

LOT 67 Gonsior/WFR Precious Marisa M1

DbI Black DbI Polled Purebred SM Cow
 #4442530 • Tattoo: M1 • BD: 1/8/24 • Act. BW: 80 • Adj. WW: 634

CE	BW	WW	YW	ADG	MCE	MM	MWW	STAY
8	4.0	93	147	.34	4	26	72	13
		10%	10%	10%		30%	15%	

DOC	CW	YG	MARB	BF	REA	API	TI
1.5	42.1	-.37	.25	-.076	.98	131	88
	15%				25%	30%	30%

HOOK'S EAGLE 6E
ES ADDICTION KH93
 ES H93
 LLSF PAYS TO BELIEVE ZU194
GONSIOR PRECIOUS G14
 WAGR PRECIOUS 202Z

- Addiction can be a tragic thing, but it worked masterfully here
 - Good friend Dean Volk's Addiction bull created a great one
 - Marisa possesses unrivaled bone, mass and power
 - Remains eye appealing with great hair
 - Big growth, with top 10% weaning and yearling epds
 - New donor, the \$15,000 Precious G14, from the Melody cow family, is cranking up
- Offered with Rinker*

LOT 68 Gonsior M Klarrisa M13

DbI Black DbI Polled Purebred SM Cow
 #4442542 • Tattoo: M13 • BD: 1/25/24 • Act. BW: 60 • Adj. WW: 626

CE	BW	WW	YW	ADG	MCE	MM	MWW	STAY
14	-1.7	85	124	.24	6	24	66	20
	25%	10%	30%				35%	10%

DOC	CW	YG	MARB	BF	REA	API	TI
1.1	41.5	-.33	.06	-.057	1.01	146	85
	15%				20%	30%	35%

WS ALL-AROUND Z35
OMF EPIC E27
 OMF TIME LESS B100
 CLRS GUARDIAN 317G
GONSIOR KLARRISA K54
 HILB DAKOTA LOVE A016S

- The Epic sired M13 takes a back seat to no others
- You'll appreciate her structure, and her soft-made, yet eye appealing look
- She goes back to the great Baby's Breath cow family
- Combination calving ease/growth, with a 146 API



OMF Epic E27, Sire



LOT 69 Gonsior Maylissa Breez M19

Homo Black DbI Polled Purebred SM Cow
 #4442548 • Tattoo: M19 • BD: 1/27/24 • Act. BW: 78 • Adj. WW: 561

CE	BW	WW	YW	ADG	MCE	MM	MWW	STAY
14	-.5	72	110	.24	4	21	57	15
	20%							

DOC	CW	YG	MARB	BF	REA	API	TI
13.3	12.6	-.39	.22	-.066	.74	138	80
	30%						

HOOK'S EAGLE 6E
ES ADDICTION KH93
 ES H93
 TLLC ONE EYED JACK
J2 CLRWTR BREEZ E702
 CLRWTR SERENA C74L

- Another Addiction daughter that sure looks the part
- Broody conformation, with great hair
- Appreciate her balanced epd profile
- Dam is from the Serena cow family



CLRWTR Serena C74L, Grandam





RP/MP Right To Love 015U,
Grandam



Schooley Krown 28K, Sire

LOT 70 Gonsior Makin It Right M37

Dbl Black Dbl Polled Star 3/4 SM 1/4 AN Cow
#4442564 • Tattoo: M37 • BD: 2/4/24 • Act. BW: 86 • Adj. WW: 671

CE	BW	WW	YW	ADG	MCE	MM	MWW	STAY
12	3.3	103	162	.37	6	21	72	15
		2%	2%	10%				15%

DOC	CW	YG	MARB	BF	REA	API	TI
18.3	6.5	-.24	.56	-.049	1.02	148	98
3%	4%		25%		10%	30%	10%

KBHR REVOLUTION H071
SCHOOLEY KROWN 28K
SCHOOLEY MISS 3000A 823F
SANDEEN UPPER CLASS 2386
FSCI RIGHT TO LOVE D627
RP/MP RIGHT TO LOVE 015U

- M37 hails from the famous Right to Love donor family
- Pretty star faced female with a bright future
- She ranked 2nd in her group with a 113 WW ratio
- The Krown cattle have been well received
- Notice the growth EPDs, with weaning and yearling both nearly top 2% of the breed!



LOT 71 Gonsior Marlotta M22

Dbl Black Dbl Polled 1/2 SM 1/2 AN Cow
#4442551 • Tattoo: M22 • BD: 1/27/24 • Act. BW: 74 • Adj. WW: 650

CE	BW	WW	YW	ADG	MCE	MM	MWW	STAY
15	-.5	84	127	.27	7	25	67	18
30%		30%	35%				30%	15%

DOC	CW	YG	MARB	BF	REA	API	TI
16.7	32.5	-.06	.81	.005	.52	170	96
10%			10%			10%	10%

LCDR FAVOR 149F
EGL CCR RAWHIDE 137J
G A R SURE FIRE 307
SCHIEFELBEIN EFFECTIVE 61
GONSIOR GRAND EFFECT F307
GONSIOR ANGELICA A38

- One of the top pure cow prospects of the sale
- A broody, stout tank
- This SimAngus™ boasts EPDs that read well across the board
- Marbling EPD is top 10%, with API and TI nearing top 10% as well
- Rawhide sired, tracing back to the Not A Problem donor family



EGL CCR Rawhide
137J, Sire



LOT 72 Gonsior My Maria M45

Dbl Black Dbl Polled Purebred SM Cow
#4442570 • Tattoo: M45 • BD: 2/6/24 • Act. BW: 82 • Adj. WW: 636

CE	BW	WW	YW	ADG	MCE	MM	MWW	STAY
10	.3	81	118	.23	5	22	62	17
	35%							

DOC	CW	YG	MARB	BF	REA	API	TI
18.3	26.5	-.42	.27	-.081	.90	141	85
2%		35%	35%	30%			

HHS MR ENTOURAGE 867B
LCDR RESERVE 210J
LCDR MS ECHO 43E
KAPPES MILE HIGH B11
GONSIOR DELIBERATE D13
GONSIOR NGUM W215

- You want growth, the Reserve cattle will do that
- My Maria is larger framed with performance bred in
- Numbers look good across the board with a 141 API
- Back to the legendary Ebony Antoinette cow family



LCDR Reserve 210J,
Sire



HILB Crazy N Love A475S,
Grandam

LOT 73 Gonsior Merely Y N Love M72

DbI Black DbI Polled 3/4 SM 1/4 AN Cow

#4442594 • Tattoo: M72 • BD: 2/23/24 • Act. BW: 73 • Adj. WW: 641

CE	BW	WW	YW	ADG	MCE	MM	MWW	STAY
13	.2	74	109	.22	7	23	59	16
DOC	CW	YG	MARB	BF	REA	API	TI	
1.3	25.4	-.42	.25	-.056	1.10	128	77	
		3%		25%	3%			

HOOK'S BEACON 56B
GONSIOR THE GENERAL H393
 AS DIAMOND 20C
 SCC SCH 24 KARAT 838
BURL RUBY K213
 HILB CRAZY N LOVE A475S

- Wowza, this Crazy N Love granddaughter has the look
- Style, elegance and grace in one solid black package
- Her sire, The General, had an impressive first calf crop; check out her paternal brothers
- Easy to work with numbers and a solid choice; her mother is equally impressive

LOT 74 Gonsior Lovely Morgan M73

DbI Black DbI Polled Purebred SM Cow

#4442595 • Tattoo: M73 • BD: 2/23/24 • Act. BW: 78 • Adj. WW: 633

CE	BW	WW	YW	ADG	MCE	MM	MWW	STAY
11	.7	84	126	.26	5	21	63	18
		35%	35%					25%
DOC	CW	YG	MARB	BF	REA	API	TI	
7.7	21.7	-.39	.45	-.070	.83	156	91	
			15%			20%	20%	

CLRS GUARDIAN 317G
GONSIOR ARMED GUARD K13
 HS/TBSF BREATHLESS 8Y
 GONSIOR THE BEACON F80
YR LOVELY LADY MAY
 CRR MS SWEETFORCE F1098

- A flashy February out of our Guardian son
 - She offers style, pizzaz, and a solid structure
 - Ratio'd 107 at weaning, and EPDs will be workable
 - Dam Lovely Lady May is from our longtime friends, Cody and the Robinette family
- Offered with Fouts Simmentals



LOT 75 Gonsior Mia M63

DbI Black DbI Polled 3/8 SM 5/8 AN Cow

#4442585 • Tattoo: M63 • BD: 2/17/24 • Act. BW: 80 • Adj. WW: 603

CE	BW	WW	YW	ADG	MCE	MM	MWW	STAY
9	.8	84	137	.33	2	32	75	14
		30%	20%	20%		4%	10%	
DOC	CW	YG	MARB	BF	REA	API	TI	
14.3	43.4	-.02	.51	.012	.60	132	86	
30%	30%		35%				35%	

SITZ RESILIENT 10208
CONNEALY CRAFTSMAN
 BLACK CATHY OF CONANGA 8521
 FSCI INDYS UPGRADE
GONSIOR DUPLICITY D3
 GONSIOR AMARSHA A705

- A Craftsman sired 3/8 blood, that might be the largest framed on the sale
- Expect her to raise performance cattle that are a bit bigger
- Back to the SAV Cheryl 4192 donor
- Dam's sister was our high selling \$11,000 pair last year to Mason SimAngus (NE)

Gonsior Klassy One
 K1, Dam's \$11,000
 Maternal Sister





Gonsior The General H393, Sire of Lots 76 & 77

LOT 76 Gonsior Malia Generator M96

Dbl Black Dbl Polled Purebred SM Cow
 #4442616 • Tattoo: M96 • BD: 3/6/24 • Act. BW: 84 • Adj. WW: 530

CE	BW	WW	YW	ADG	MCE	MM	MWW	STAY
13	2.6	76	115	.25	8	15	53	18
30%					25%			25%
DOC	CW	YG	MARB	BF	REA	API	TI	
9.2	23.0	-.46	.31	-.087	.93	145	81	
		20%	30%	30%	35%	35%		

HOOK'S BEACON 56B
GONSIOR THE GENERAL H393
 AS DIAMOND 20C
 SVF STAR POWER S802
GONSIOR POWER UP C203
 SS MISS JESSE

- M96 hails from the Jesse cow family, that was synonymous with show ring success
- She'll give you eye-appeal overload
- Her dam is a large boned, bigged footed cow that always transmits the look
- The General certainly will not take away style, and gives them EPD balance



LOT 77 Gonsior Morgana Emma M85

Dbl Black Dbl Polled 3/4 SM 1/4 AN Cow
 #4442605 • Tattoo: M85 • BD: 2/29/24 • Act. BW: 76 • Adj. WW: 614

CE	BW	WW	YW	ADG	MCE	MM	MWW	STAY
15	-1.6	73	108	.22	9	20	57	18
25%	25%				15%			20%
DOC	CW	YG	MARB	BF	REA	API	TI	
1.9	18.7	-.35	.39	-.027	1.00	145	82	
		15%			10%	35%		

HOOK'S BEACON 56B
GONSIOR THE GENERAL H393
 AS DIAMOND 20C
 W/C LOCK DOWN 206Z
PILK LOCK DOWN 87
 GONSIOR CHAMBRAY C13

- A General sired female with no holes
- She'll be a no-nonsense producer
- She also offers numbers balance with a 145 API
- Broody look



LOT 78 Gonsior Inspiration M75

Dbl Black Homo Polled Purebred SM Cow
 #4442597 • Tattoo: M75 • BD: 2/25/24 • Act. BW: 62 • Adj. WW: 634

CE	BW	WW	YW	ADG	MCE	MM	MWW	STAY
15	-2.2	81	122	.25	7	24	64	23
10%	10%				25%			2%
DOC	CW	YG	MARB	BF	REA	API	TI	
15.8	3.1	-.30	.42	-.053	.78	173	92	
10%		20%			5%	20%		

OMF EPIC E27
SCHOOLEY STANDOUT 27G
 CLRS BEAUTY QUEEN 420 B
 LBRS GENESIS G69
M4 MS INSPIRATION K206
 M4 MS IMPULSE E6Z

- A Schooley Standout from a young Marple heifer.
- M75 is another very cowy, tank
- Nearly a top 5% API, with top marbling and good calving ease and growth
- Started small but still ratio'd 107 at weaning



Schooley Standout 27G, Sire



W/C Sugar Daddy 9002H,
Sire of Lots 79 & 80

LOT 79 Gonsior Marabella M99

DbI Black DbI Polled 3/4 SM 1/4 AN Cow

#4442619 • Tattoo: M99 • BD: 3/7/24 • Act. BW: 79 • Adj. WW: 563

CE	BW	WW	YW	ADG	MCE	MM	MWW	STAY
18	-1.4	61	93	.19	8	24	55	16
5%	30%				30%			
DOC	CW	YG	MARB	BF	REA	API	TI	
1.1	21.9	-.23	.39	-.032	.64	140	75	

CDI INNOVATOR 325D
W/C SUGAR DADDY 9002H
WS MISS SUGAR C4
B C LOOKOUT 7024
SS BELLA Z614
LUCAS/SS PRINCESS P614

- Another wedge shaped pure cow prospect
- This Sugar Daddy daughter goes back to the dam of SS Goldmine
- She'll be just like her dam and stay very consistent
- Top 5% calving ease with a 140 API

LOT 80 Gonsior Mandy M120

Hetero Black Homo Polled Purebred SM Cow

#4442640 • Tattoo: M120 • BD: 4/8/24 • Act. BW: 71 • Adj. WW: 666

CE	BW	WW	YW	ADG	MCE	MM	MWW	STAY
17	-2.7	76	113	.23	10	24	62	16
10%	4%				4%			
DOC	CW	YG	MARB	BF	REA	API	TI	
13.1	31.5	-.39	.49	-.058	1.06	164	92	
35%			15%		15%	15%	20%	

CDI INNOVATOR 325D
W/C SUGAR DADDY 9002H
WS MISS SUGAR C4
IR IMPERIAL D948
GONSIOR JAZLYNN J6
KBHR MS ALL ABOARD G255

- Sharp look to this young April
- She ratio'd 108, weaning at 666#
- The Sugar Daddy's are making great females, and this one boast a 164 API (top 15%)
- CE & BW top 10% and 4%, with marbling and REA top 15%
- Don't miss her sister selling as lot 108



LOT 81 Gonsior Ms Megan M118

DbI Black DbI Polled Purebred SM Cow

#4442638 • Tattoo: M118 • BD: 3/31/24 • Act. BW: 68 • Adj. WW: 543

CE	BW	WW	YW	ADG	MCE	MM	MWW	STAY
16	-3.3	59	73	.09	8	22	51	15
10%	3%				20%			
DOC	CW	YG	MARB	BF	REA	API	TI	
1.7	16.8	-.50	.15	-.117	.74	136	74	
		10%		5%				

HOOKS SHEAR FORCE 38K
GONSIOR SHEARSHOCK F016
HILB DAKOTA LOVE A016S
HILB DIRECT DEPOSIT
GONSIOR CHRISSY C37
GONSIOR YNEZ Y105

- This will be the last calf crop to sell by Shear Shock (Shear Force son)
- She's balanced with a good look
- The Shear Force lineage always made productive cows
- Dam goes back to our Blazey/Black Tess cow family





KA TCF Independence S30L, Grandam



Mr CCF Bills Paid, Sire

LOT 82

Gonsior Mandolyn M121

DbI Black DbI Polled Purebred SM Cow

#4442641 • Tattoo: M121 • BD: 4/11/24 • Act. BW: 80 • Adj. WW: 547

CE	BW	WW	YW	ADG	MCE	MM	MWW	STAY
10	2.2	66	92	.16	5	19	52	18
								30%

DOC	CW	YG	MARB	BF	REA	API	TI
11.8	25.1	-.42	.02	-.080	.88	118	67
		35%					

LLSF PAYS TO BELIEVE ZU194

MR CCF BILLS PAID

MISS CCF JESTRESS B79

MR NLC UPGRADE U8676

GONSIOR UP IN STARS D27

KA TCF INDEPENDENCE S30L

- Mandolyn...yes, she's a beauty queen
- A granddaughter of our prolific Independence donor, who has 125 calves recorded
- This one is sharp, eye-appealing, and sound
- Sire Bills Paid is from the Jestress cow family that paves the way for C & C in Georgia
- Need a young show heifer?



LOT 83

Gonsior Myztify M125

DbI Black DbI Polled Purebred SM Cow

#4442644 • Tattoo: M125 • BD: 5/16/24 • Act. BW: 88 • Adj. WW: 651

CE	BW	WW	YW	ADG	MCE	MM	MWW	STAY
13	.5	76	115	.24	7	31	69	18
	35%				35%	10%	25%	30%

DOC	CW	YG	MARB	BF	REA	API	TI
8.5	41.8	-.43	.37	-.099	.98	151	86
	15%	30%	25%	20%	25%	25%	35%

CDI INNOVATOR 325D

W/C SUGAR DADDY 9002H

WS MISS SUGAR C4

MCM TOP GRADE 018X

JZ MS WINOA 04H

SS DEJA VU

- This young beauty may just be the sharpest of the group
- Hard to fault, from her zipper front, thru her big belly, back to her square hip
- Made with a good running gear and great hair
- Show heifer? Sure could be
- Productive future cow? Certainly, with a 151 API
- A Sugar Daddy from one of our favorite cows, O4H
- Dam is from our longtime friend and customer, Jim Zvolanek at Stateline Farms



W/C Sugar Daddy, Sire






Gonsior Loribeth L93, Full Sister



Bar CK Red Empire 9153G, Sire

RED EMPIRE DAUGHTERS

LOT 84 **Gonsior Lady Mystique M113** 

Red Dbl Polled 1/2 SM 1/2 AR Cow
 #4442633 • Tattoo: M113 • BD: 3/19/24 • Act. BW: 75 • Adj. WW: 563

CE	BW	WW	YW	ADG	MCE	MM	MWW	STAY
14	-1.6	66	104	.24	9	30	63	21
35%	25%				25%	10%		4%

IR IMPERIAL D948
BAR CK RED EMPIRE 9153G
 WS MISS NORTHSTAR B180
 WEBR TC CARD SHARK 1015
JFCC LEA 557
 BEAVER BROOK MAJOR LEA 293R

- Another Red Empire beauty; this one in a Sim-Red Angus package
- If we've learned anything about RE, it's that he calves easy and makes good daughters
- She's got the look to be a productive cow for years
- Dam is from Brad Johnson's good operation in Wisconsin
- Full sister is in production at Marple's in Kansas

LOT 85 **Gonsior Red Menora M109**


Red Dbl Polled Purebred SM Cow
 #4442629 • Tattoo: M109 • BD: 3/13/24 • Act. BW: 77 • Adj. WW: 617

CE	BW	WW	YW	ADG	MCE	MM	MWW	STAY
17	-1.3	71	110	.25	9	27	62	18
4%	15%				10%	25%		25%

IR IMPERIAL D948
BAR CK RED EMPIRE 9153G
 WS MISS NORTHSTAR B180
 FSCI INDYS UPGRADE
GONSIOR DONNA D28
 ANDJ MISS SWEET



- Red beauty sired by Bar C/K Red Empire
- A solid numbered purebred with top 4% CE and a nice 149 API
- Good structured, with a soft-hided look
- Back to Magnetic Lady on the bottom side

LOT 86 **Gonsior Holly Mae M123** 

Red Dbl Polled 1/2 SM 1/2 AR Cow
 #4454707 • Tattoo: M123 • BD: 4/25/24 • Act. BW: 70 • Adj. WW: 510

CE	BW	WW	YW	ADG	MCE	MM	MWW	STAY
16	-2.4	62	94	.20	9	27	58	17
20%	15%				20%	25%		30%

IR IMPERIAL D948
BAR CK RED EMPIRE 9153G
 WS MISS NORTHSTAR B180
 LCHMAN.ABOVEHEAVEN1018F
CHEK BELLA
 CHEK TATIANA



- Here's another Sim-Red Angus Red Empire sired 1/2 blood
- Moderate, correct, and broody
- Her dam Z140 was a granddaughter of the renown Foster HiQueen "Holly" donor
- She'll be the productive kind



• Please note that the bred pictures were taken in late December, 2024. These heifers were on cornstalks, and were supplemented feed for only about 10 days prior to pictures. These are not feedlot developed heifers...they will know how to work and be a cow.

ELITE BRED HEIFERS



Mr SR Mic Drop G1534, AI Sire

LOT 87 Gonsior Kenna K973

DbI Black DbI Polled Purebred SM Cow
#4245446 • Tattoo: K973 • BD: 8/28/22 • Act. BW: 78 • Adj. WW: 585

CE	BW	WW	YW	ADG	MCE	MM	MWW	STAY
12	1.7	78	117	.24	5	25	65	15
						35%		

DOC	CW	YG	MARB	BF	REA	API	TI
1.7	33.3	-.37	.35	-.072	.89	141	84
	35%		25%				

CDI INNOVATOR 325D
W/C SUGAR DADDY 9002H
WS MISS SUGAR C4
MR NLC UPGRADE U8676
JR PASSING GRADE B32
GONSIOR SHEZABLAZIN S104

- Big, stout performance oriented Sugar Daddy female
- A good choice to raise power bulls; she's sound and easy going
- From the 806A cow family, her sire Sugar Daddy also injects C4's maternal line
- Mating to Mic Drop should make a good baldy

A.I. Sire: Mr SR Mic Drop G1534 Date: 5/1/24
Est. Plan Mating EPDs: 13 .5 83 131 .30 8 24 65 19 15.4
Carcass: 31.8 -.41 .22 -.08 .93 148 85
Pasture Sire: TRIF Western Feel 242K Dates: 5/5 to 7/20/24



Maternal Sister sells as Lot 61



KBHR Keynote, Sire Lot 88A



Gonsior 9B, Dam

LOT 88 Gonsior Kenzo K986

DbI Black DbI Polled Purebred SM Cow
#4245457 • Tattoo: K986 • BD: 9/9/22 • Act. BW: 86 • Adj. WW: 659

CE	BW	WW	YW	ADG	MCE	MM	MWW	STAY
9	2.9	79	114	.22	2	23	62	13

DOC	CW	YG	MARB	BF	REA	API	TI
14.2	22.3	-.46	.32	-.113	.73	130	82
	25%	20%	30%	5%			

LLSF UPRISING Z925
HILB ORACLE C033R
SS BABYS BREATH P035
TRIPLE C SINGLETARY S3H
GONSIOR 9B
SS VALENTINE Z018

- Yowza...Kenzo is the real deal
- She's donor 9B's natural calf
- She's a moderate, great footed, sound structured tank...with an impeccable udder
- Really unsure what we'd change about her...just the right kind
- \$11,000 sister is working as a donor at Chris Castello's in CA; she's the same caliber
- Her maternal sister sells as Lot 61.

LOT 88A Black Polled Purebred Bull
BD: 1/28/25 • Act BW: 78 • Sire: KBHR Keynote K229
Est. EPDs: 13 -1.0 85 125 .25 6 21 64 19 11.7
Carcass: 34.5 -.22 .75 -.05 .60 179 100



Halls Be Steel My Heart, Grandam

LOT 89 Gonsior Katalina K988

DbI Black DbI Polled Purebred SM Cow

#4245459 • Tattoo: K988 • BD: 9/11/22 • Act. BW: 77 • Adj. WW: 633

CE	BW	WW	YW	ADG	MCE	MM	MWW	STAY
15	.6	75	108	.21	7	27	64	10
20%					30%	25%		

DOC	CW	YG	MARB	BF	REA	API	TI
9.0	26.7	-.37	.26	-.066	.86	130	82

CDI INNOVATOR 325D
 W/C SUGAR DADDY 9002H
 WS MISS SUGAR C4
 W/C RELENTLESS 32C
GONSIOR RELENTING F17
 HALLS BE STEEL MY HEART

- Here's a striking Sugar Daddy daughter
- Katalina is larger framed, but still totally complete
- Long, feminine front on great structure...should make great daughters
- Looks to be milking really well, with a next level udder
- Bull calf by Turning Point looks really good
- Her dam is a Relentless out of Broker's full sister, X50

LOT 89A Black Polled Purebred Bull
 BD: 1/30/25 • Act BW: 75 • Sire: Stevenson Turning Point
 Est. EPDs: 18 -2.3 76 117 .26 8 25 63 13 9.5
 Carcass: 44.9 -.11 .41 -.01 .7 141 83

LOT 90 SS Kandy 811L

Red DbI Polled Purebred SM Cow

#4240631 • Tattoo: 811L • BD: 1/2/23 • Act. BW: 76 • Adj. WW: 643

CE	BW	WW	YW	ADG	MCE	MM	MWW	STAY
10	.9	66	99	.21	4	25	58	14
						35%		

DOC	CW	YG	MARB	BF	REA	API	TI
12.8	17.4	-.36	.19	-.070	.70	124	73

W/C FORT KNOX 609F
 W/C FORT KNOX 69H HARDWIRE
 W/C ANGEL 7113E
 MACK AF W273
SIMME VALLEY EYE CANDIE
 WHSP OAKS SWEET TALKIN'

- Big, powerful, solid red out of the Fort Knox son, Hardwire
- Udder development looks good, and you'll like her Red Wave baby
- Long front, good structure and very complete overall
- Called safe to Red Wave

A.I. Sire: SWC Red Wave 376J Date: 5/1/24
 Est. Plan Mating EPDs: 12 -.4 62 90 .18 5 23 54 15 9.8
 Carcass: 12.4 -.31 .27 -.06 .54 134 74
 Pasture Sire: Cast CC 343L Dates: 5/5 to 7/20/24



SWC Red Wave 376J,
 AI Sire



LOT 91 Gonsior Dolly's Privilege L7

DbI Black Homo Polled 1/2 SM 1/2 AN Cow

#4291354 • Tattoo: L7 • BD: 1/20/23 • Act. BW: 70 • Adj. WW: 634

CE	BW	WW	YW	ADG	MCE	MM	MWW	STAY
16	-1.5	80	119	.25	7	18	58	14
15%	25%							

DOC	CW	YG	MARB	BF	REA	API	TI
12.4	3.2	.09	.35	.028	.21	136	82

CCR COWBOY CUT 5048Z
TJ FRANCHISE 451D
 TJ MISS NET WORTH U11
 W/C UNITED 956Y
LSS BARBARAMERE 817F
 LSS BARBARAMERE A04

- High calving ease female here, with good growth
- Her Mason-raised dam, 817F, does a great job
- She'll be good sized cow that will certainly be productive
- She will calve to Western Feel, our high numbered Sugar grandson by Galileo

A.I. Sire: W/C Doctor's Orders 665F Date: 4/13/24
 Pasture Sire: TRIF Western Feel 242K Dates: 5/5 to 7/20/24
 Est. Plan Mating EPDs: 17 -2.4 85 125 .26 8 26 68 16 16.0
 Carcass: 34.2 -.00 .70 .00 .32 170 97



TRIF Western Feel
 242K, Pasture Sire





LOT 92

Gonsior Lavishing Locks L10

Dbi Black Homo Polled Purebred SM Cow

#4472076 • Tattoo: L10 • BD: 1/21/23 • Act. BW: 70 • Adj. WW: 649

CE	BW	WW	YW	ADG	MCE	MM	MWW	STAY
10	2.5	78	115	.23	4	18	56	12

DOC	CW	YG	MARB	BF	REA	API	TI
7.0	25.2	-.53	-.04	-.103	1.05	111	73
		10%		10%	15%		

REMINGTON LOCK N LOAD 54U
W/C LOADED UP 1119Y
 AUBREYS BLACK BLAZE III
 TMAS CAN'T TOUCH THIS 8531F
BWL RED FIRE 128J
 CTN SS BWL KINLEY D004

- The Loaded Up daughters make good cows; expect nothing less from L10
- She's very feminine and sound in structure
- Her dam is a red baldy back to the Red Jewel donor
- Should calve to Conneally Commerce for an interesting SimAngus

A.I. Sire: Conneally Commerce Date: 5/14/24
 Est. Plan Mating EPDs: 15 .6 94 148 .34 11 22 70 12 10.1
 Carcass: 51.3 -.20 .44 -.03 .97 140 92
 Pasture Sire: TRIF Western Feel 242K Dates: 5/5 to 7/20/24



Conneally Commerce, AI Sire



- A beautifully perfect EO daughter that was destined for our replacement pen
- Her mother is a daughter of the great Magnetic Lady
- From back to front, see her big hip, sweeping ribcage, great structure, and long feminine front... top it off with the perfect Simmental trademarked baldy face
- Lana L11 will be a front pasture cow wherever she ends up
- She will calve to the pasture sire; the Sugar C4 grandson Western Feel



Gonsior Gene Seek M97, Maternal Sibling selling as Lot 52



TRIF Western Feel, Pasture Sire

LOT 93 Gonsior Lana L11

Dbi Black Dbi Polled Baldy Purebred SM Cow

#4291357 • Tattoo: L11 • BD: 1/22/23 • Act. BW: 78 • Adj. WW: 599

CE	BW	WW	YW	ADG	MCE	MM	MWW	STAY
12	-.2	73	101	.17	5	25	62	14
	25%					35%		

DOC	CW	YG	MARB	BF	REA	API	TI
9.8	16.0	-.31	.08	-.067	.54	123	76

W/C UNITED 956Y
W/C EXECUTIVE ORDER 8543B
 MISS WERNING KP 8543U
 TKCC CLASSIFIED
SS EMERSON E785
 SVF NJC MAGNETIC LDY M25

A.I. Sire: Hook's Galileo 210G Date: 4/15/24
 Pasture Sire: TRIF Western Feel 242K Dates: 5/5 to 7/20/24
 Est. Plan Mating EPDs: 15 -1.8 81 116 .22 7 29 70 16 14.7
 Carcass: 27.1 -.20 .56 -.05 .49 164 94



LOT 94

Gonsior 807's Advantage L807

Purebred AN Cow

#21104205 • Tattoo: L807 • BD: 1/27/23 • Act. BW: 65 ET • Adj. WW: 570

CED	BW	WW	YW	ADG	DMI	YH	SC	HP
7	.9	47	79	.18	33	-3	.08	5.2
					10%			

CEM	MILK	MW	MH	SEN	CW	MARB	RE	FAT
7	15	3	-6	20	15	.39	37	.034
				2%				

CONNELLY EARNAN 076E
BROOKING BANK NOTE 4040
 E A ROSE 918
 O C C EMBLAZON 854E
AR IDEAL 345 854E 807
 A R 345 IDEAL 761C EXT

- A very moderate Brookings Bank Note purebred Angus heifer
- She's an ET daughter of our former donor AR Ideal 345 854E 807
- 807 had a full brother that was an ABS stud bull
- This little female is bred to be very moderate
- As you study her, you'll notice she's super correct and the right kind
- Safe to Western Feel for a big numbers SimAngus™

Pasture Sire: TRIF Western Feel 242K Dates: 5/5 to 7/20/24

AR Ideal 345 854E 807, Dam



Brooking Bank Note 4040, Sire



Hook's Galileo 210G, AI Sire for Lot 95 and Calf Sire for 97A

LOT 95 **Gonsior Lillan L25**

DbI Black DbI Polled Baldy 5/8 SM 3/8 AN Cow

#4291371 • Tattoo: L25 • BD: 1/29/23 • Act. BW: 81 • Adj. WW: 650

CE	BW	WW	YW	ADG	MCE	MM	MWW	STAY
9	3.1	80	116	.23	4	20	60	13

DOC	CW	YG	MARB	BF	REA	API	TI
14.7	22.6	-.40	.22	-.058	.96	113	75
25%		5%		25%	10%		

LLSF PAYS TO BELIEVE ZU194
MR CCF BILLS PAID
 MISS CCF JESTRESS B79
 GW-WBF SUBSTANCE 820Y
GONSIOR HEART ONE H29
 GONSIOR J-CATCHER Z53



- A beautiful, tank of a female
- Dam H29 is super productive and one of our best young cows
- Lillan is good sized, big boned and big footed, with extra rib & capacity
- Top all that off with a great attitude and a pretty baldy face
- Bills Paid makes them so easy fleshing and soft
- Safe to Galileo to really amp up the numbers

A.I. Sire: Hook's Galileo 210G Date: 5/16/24
 Est. Plan Mating EPDs: 13 .5 85 128 .27 8 29 71 16 17.1
 Carcass: 36.1 -.28 .72 -.05 .82 165 97
 Pasture Sire: TRIF Western Feel 242K Dates: 5/5 to 7/20/24

LOT 96 **Gonsior/Wrs Lyla L30**

Homo Black Homo Polled 3/4 SM 1/4 AN Cow

#4291376 • Tattoo: L30 • BD: 1/31/23 • Act. BW: 82 • Adj. WW: 580

CE	BW	WW	YW	ADG	MCE	MM	MWW	STAY
9	1.6	76	107	.19	5	18	56	15

DOC	CW	YG	MARB	BF	REA	API	TI
7.1	22.3	-.12	.52	-.021	.39	131	80
			30%				

CCS/WHF OL' SON 48F
JS KEEPIN IT 90 39H
 CLRS DAIRY QUEEN 606D
 TNT TUITION U238
W/C MISS WERNING 456B
 MISS WERNING 956W

- Lyla is a homo black homo polled Keepin It 90 daughter
- Unique pedigree with her dam 456B being the only full sib to the great United
- L30 offers good size, nice structure, pretty udder and style
- Maternal sister was a top selling pair last year at \$9,000 to Bergman
- She's got a nice ticket at side; a good looking bull calf by ES Solid Gold



W/C Miss Werning 456B, Dam



Gonsior USA Sammy K925, Maternal Sister

LOT 96A **Black Polled Purebred Bull**

BD: 1/28/25 • Act BW: 85 • Sire: ES Solid Gold JG157
 Est. EPDs: 9 1.6 95 138 .27 4 21 69 15 9.4
 Carcass: 35.6 -.10 .66 -.01 .57 147 98

LOT 97 **Gonsior Steel Legacy L41**

DbI Black DbI Polled Purebred SM Cow

#4291386 • Tattoo: L41 • BD: 2/6/23 • Act. BW: 70 ET • Adj. WW: 543

CE	BW	WW	YW	ADG	MCE	MM	MWW	STAY
11	1.8	78	119	.26	5	23	61	12

DOC	CW	YG	MARB	BF	REA	API	TI
7.5	2.8	-.41	-.06	-.084	.78	112	74
			30%				

W/C UNITED 956Y
W/C EXECUTIVE ORDER 8543B
 MISS WERNING KP 8543U
 SVF STEEL FORCE S701
HALLS BE STEEL MY HEART
 JM BF H25

- Sired by the great EO, Steel Legacy combines numerous great cow families
- She's an ET daughter of Be Steel My Heart, the Gonsior, Buehler, Bruhn donor
- She's moderate, sound and beautiful fronted
- She has a Galileo baby at side that is doing well



Halls Be Steel My Heart, Dam



LOT 97A **Black Polled Purebred Bull**

BD: 1/23/25 • Act BW: 65 • Sire: Hook's Galileo 210G
 Est. EPDs: 14 -.2 84 130 .29 9 30 72 16 13.5
 Carcass: 35.2 -.28 .58 -.06 .73 164 96



LOT 98

Gonsior Leyance L49

Dbi Black Homo Polled 3/4 SM 1/4 AN Cow

#4291394 • Tattoo: L49 • BD: 2/12/23 • Act. BW: 73 • Adj. WW: 623

CE	BW	WW	YW	ADG	MCE	MM	MWW	STAY
14	-3.4	71	111	.25	10	20	56	19
35%	10%				10%			15%
DOC	CW	YG	MARB	BF	REA	API	TI	
15.9	14.9	-.25	.23	-.039	.54	140	78	
15%		35%						

MR SR 71 RIGHT NOW E1538
 MR SR MIC DROP G1534
 MISS SR C1534
 W/C LOCK DOWN 206Z
PILK LOCK DOWN 87
 GONSIOR CHAMBRAY C13

- Mic Drop daughter with big calving ease EPDs
- Also high Stay and Docility numbers
- Leyance is complete made from end to end and will be productive
- She sells safe to the big numbered Western Feel bull

A.I. Sire: KBHR Keynote K229 Date: 4/24/24
 Pasture Sire: TRIF Western Feel 242K Dates: 5/5 to 7/20/24
 Est. Plan Mating EPDs: 16 -3.4 80 121 .26 10 27 67 19 17.8
 Carcass: 26.6 -.17 .64 -.03 .49 176 97



TRIF Western Feel 242K, Pasture Sire



ES G62, Dam



ES J23, High Selling Sister

LOT 99 Gonsior Liberty L51

Red Dbi Polled Purebred SM Cow

#4291396 • Tattoo: L51 • BD: 2/13/23 • Act. BW: 65 • Adj. WW: 593

CE	BW	WW	YW	ADG	MCE	MM	MWW	STAY
17	-5.0	58	80	.14	7	24	52	21
4%	1%				25%			5%
DOC	CW	YG	MARB	BF	REA	API	TI	
12.2	-4.9	-.38	.25	-.024	.82	157	78	
						20%		

IR IMPERIAL D948
BAR CK RED EMPIRE 9153G
 WS MISS NORTHSTAR B180
 CDI AUTHORITY 77X
ES G62
 ES Z44

- A beautiful, red stylish female
- Top 4% CE and top 1% BW, with top 5% Stay
- 157 Top 20% API
- Sound, pretty and easy going; her Eichaker bred dam is a good one too
- Developing a great udder, she'll have lots of friends
- Maternal sister was a high selling pair to Sloup at \$7500
- Bred to the Hilger One son, we expect a red baby before the sale
- Full sibling sells as lot 59

Pasture Sire: Cast CC 343L Dates: 5/5 to 7/20/24
 Est. Plan Mating EPDs: 17 -4.5 7 101 .21 8 26 60 17 13.5
 Carcass: 20.6 -.34 .3 -.04 .91 158 85



LOT 100

Gonsior Lottie L56

Red Dbi Polled Purebred SM Cow

#4291401 • Tattoo: L56 • BD: 2/17/23 • Act. BW: 70 • Adj. WW: 623

CE	BW	WW	YW	ADG	MCE	MM	MWW	STAY
13	-2.1	63	101	.24	9	22	53	16
30%	10%				10%			
DOC	CW	YG	MARB	BF	REA	API	TI	
16.5	14.8	-.36	.35	-.047	.82	147	80	
10%			25%			30%		

IR IMPERIAL D948
BAR CK RED EMPIRE 9153G
 WS MISS NORTHSTAR B180
 BCLR AMMO W513-1
GONSIOR ALICIA A31
 GONSIOR/JC M2842

- Another big, growthy red female
- Very feminine, and her mom puts grow in them
- A high CE female with a top 30% API
- She's also pen-bred to the Hilger One son

Pasture Sire: Cast CC 343L Dates: 5/5 to 7/20/24
 Est. Plan Mating EPDs: 15 -3.1 70 111 .26 8 25 60 15 15.7
 Carcass: 30.5 -.33 .41 -.05 .91 153 86

LOT 101 Gonsior Letty L61

Hetero Black Dbl Polled Purebred SM Cow

#4291406 • Tattoo: L61 • BD: 2/21/23 • Act. BW: 71 • Adj. WW: 669

CE	BW	WW	YW	ADG	MCE	MM	MWW	STAY
15	-1	74	113	.24	8	22	59	16
10%	25%				15%			
DOC	CW	YG	MARB	BF	REA	API	TI	
11.2	14.7	-.40	.34	-.023	1.13	149	84	
		25%			10%	30%		

IR IMPERIAL D948
BAR CK RED EMPIRE 9153G
 WS MISS NORTHSTAR B180
 MR CCF 20-20
GONSIOR GABRIELLA G12
 HALLS BE STEEL MY HEART



Halls Be Steel My Heart, Grandam

- We enjoy watching these young heifers develop
- L61 has a super udder and has done an excellent job with her Sugar Daddy baby
- She's moderate framed and super easy fleshing
- Big CE and REA epds, along with a very workable top 30% API
- Her dam is a daughter of our X50 donor

LOT 101A Black Polled Purebred Female
 BD: 1/16/25 • Act BW: 60 • Sire: W/C Sugar Daddy 9002H
 Est. EPDs: 16 -.5 76 115 .25 9 26 64 14 11.4
 Carcass: 28.5 -.37 .46 -.05 1.04 155 88



- Beautiful red baldy daughter of the Trennepohl donor, Womack Precious Miss
- Her nearly identical twin sister was an \$8,000 top seller to K. Lisenby, OR last year
- She has a very desirable color pattern, excellent feet and legs, and a great presence
- Everyone likes their Something About Mary daughters
- She was destined for our replacement pen, but will calve a bit late for us
- Called safe to our high EPDs Galileo son, Western Feel



\$8000 full sister to Lot 102

LOT 102 Gonsior/JMAM Addison L603

Red Dbl Polled Baldy 3/4 SM 1/4 AN Cow

#4291462 • Tattoo: L603 • BD: 2/21/23 • Act. BW: 81 ET Twin • Adj. WW: N/A

CE	BW	WW	YW	ADG	MCE	MM	MWW	STAY
11	3.8	84	124	.25	4	20	62	9
		30%						
DOC	CW	YG	MARB	BF	REA	API	TI	
9.0	35.4	-.25	-.09	-.042	.78	89	68	
		35%			30%			

W/C RELENTLESS 32C
JSUL SOMETHING ABOUT MARY 8421
 JBSF PROUD MARY
 MR HOC BROKER
WOMACK PRECIOUS MISS
 GRANDVIEW WOMACK MISS 71

A.I. Sire: KBHR Charger K102 Date: 5/22/24
 Pasture Sire: TRIF Western Feel 242K Dates: 5/5 to 7/20/24
 Est. Plan Mating EPDs: 14 .3 87 128 .26 7 27 70 14 14.3
 Carcass: 36.8 -.17 .48 -.04 .61 150 92

LOT 103 Gonsior Lotty L72

Hetero Black Dbl Polled Purebred SM Cow

#4291417 • Tattoo: L72 • BD: 2/28/23 • Act. BW: 90 • Adj. WW: 645

CE	BW	WW	YW	ADG	MCE	MM	MWW	STAY
10	1.1	72	110	.23	3	29	65	19
					15%			20%
DOC	CW	YG	MARB	BF	REA	API	TI	
18.2	15.6	-.40	.21	-.044	.98	138	78	
2%				25%				

IR IMPERIAL D948
BAR CK RED EMPIRE 9153G
 WS MISS NORTHSTAR B180
 KAPPES MILE HIGH B11
GONSIOR FARRAH F31
 SC DRIVEN MS RUBY Z8



- Lotty is a picturesque Red Empire daughter
- The RE's are making great cows...add one to your herd today
- Very easy going with high milk and stay epds
- This cow family, from Shoal Creek, raises growthy calves that perform
- Bred to our good looking, big numbered Hilger One son

Pasture Sire: Cast CC 343L Dates: 5/5 to 7/20/24
 Est. Plan Mating EPDs: 13 -1.5 74 116 .26 5 29 66 16 16.5
 Carcass: 30.9 -.35 .34 -.05 .99 149 86



LOT 104

Gonsior Larie Antoinette L81

Red Dbl Polled Purebred SM Cow

#4291426 • Tattoo: L81 • BD: 3/8/23 • Act. BW: 80 • Adj. WW: 615

CE	BW	WW	YW	ADG	MCE	MM	MWW	STAY
12	-1.5	60	86	.16	8	29	58	18
	10%				20%	15%		25%

DOC	CW	YG	MARB	BF	REA	API	TI
12.2	19.2	-.39	.12	-.037	1.06	132	72
					15%		

IR IMPERIAL D948
BAR CK RED EMPIRE 9153G
 WS MISS NORTHSTAR B180
 GONSIOR UFS POWER
GONSIOR WINE N DINE W38
 BBB MISS ZEUS 107F

- Here's a sharp made, angular and ultra feminine Red Empire daughter
- Top 15% milk, BW and REA
- Longevity bred in...her 16 year old dam will calve again soon
- Called safe to Red Wave for an exciting red calf

A.I. Sire: SWC Red Wave 376J Date: 5/7/24
 Est. Plan Mating EPDs: 13 -1.6 59 83 .15 8 24 54 17 9.5
 Carcass: 13.3 -.33 .23 -.05 .72 138 73
 Pasture Sire: TRIF Western Feel 242K Dates: 5/5 to 7/20/24



SWC Red Wave 376J, AI Sire



LOT 105 Gonsior Speed Lane L87

Dbl Black Dbl Polled Purebred SM Cow
 #4291432 • Tattoo: L87 • BD: 3/12/23 • Act. BW: 70 • Adj. WW: 634

CE	BW	WW	YW	ADG	MCE	MM	MWW	STAY
15	-.8	76	112	.22	8	26	64	15
	15%	20%			15%	25%		

DOC	CW	YG	MARB	BF	REA	API	TI
12.5	41.8	-.30	.35	-.083	.71	149	86
	15%		25%	30%		30%	35%

CDI INNOVATOR 325D
W/C SUGAR DADDY 9002H
 WS MISS SUGAR C4
 TBSF/GS MR. MACHO 30T
GONSIOR AKILA A28
 MEYERS 007

- Speed Lane is a Sugar Daddy with big calving ease and a 149 API
- Hails from the Meyer Ranch 007K cow family
- L87 is not the most calm heifer in the group
- Pen bred to Western Feel to calve early February

Pasture Sire: TRIF Western Feel 242K Dates: 5/5 to 7/20/24
 Est. Plan Mating EPDs: 17 -2.1 83 122 .24 9 30 71 17 16.1
 Carcass: 40.0 -.20 .70 -.06 .57 178 100



TRIF Western Feel 242K, Pasture Sire



LOT 106

Gonsior Lynden L91

Hetero Black Dbl Polled 3/4 SM 1/4 AN Cow

#4291436 • Tattoo: L91 • BD: 3/13/23 • Act. BW: 65 • Adj. WW: 595

CE	BW	WW	YW	ADG	MCE	MM	MWW	STAY
14	-1.1	67	91	.15	8	23	57	19
	35%				30%			15%

DOC	CW	YG	MARB	BF	REA	API	TI
14.5	13.6	-.46	.31	-.041	1.18	136	75
	25%		2%		2%		

IR IMPERIAL D948
BAR CK RED EMPIRE 9153G
 WS MISS NORTHSTAR B180
 GONSIOR/AS NEBRASKA BEEF
GONSIOR VALENTINA BEEF
 JC 200

- Another sharp, broody Red Empire
- She is very maternally bred, and boasts a 136 API
- L91 offers interesting carcass numbers, with top 2% yield grade and REA
- She sells bred to our Hilger One son; expect a baby well before sale day

Pasture Sire: Cast CC 343L Dates: 5/5 to 7/20/24
 Est. Plan Mating EPDs: 15 -2.6 72 106 .22 8 26 62 16 14.7
 Carcass: 29.9 -.38 .39 -.05 1.09 152 86

LOT 107 **Gonsior Lilac L103**

DbI Black DbI Polled Purebred SM Cow

#4291447 • Tattoo: L103 • BD: 3/22/23 • Act. BW: 73 • Adj. WW: 603

CE	BW	WW	YW	ADG	MCE	MM	MWW	STAY
15	-7	70	92	.13	7	22	57	15
15%	20%				25%			

DOC	CW	YG	MARB	BF	REA	API	TI
11.3	21.6	-.60	.08	-.117	1.12	132	76
		2%		5%	10%		

HOOKS SHEAR FORCE 38K
GONSIOR SHEARSHOCK F016
 HILB DAKOTA LOVE A0165
 HILB DIRECT DEPOSIT
GONSIOR CHRISSY C37
 GONSIOR YNEZ Y105

- Super Shearshock daughter
- She offers high calving ease and top yield grade and backfat EPDs
- Her mating to Mic Drop could make a baldy with a bright future

A.I. Sire: Mr SR Mic Drop G1534 Date: 5/15/24
 Est. Plan Mating EPDs: 14 -.7 79 118 .25 9 22 61 19 15.7
 Carcass: 25.9 -.53 .09 -.10 1.05 144 81
 Pasture Sire: TRIF Western Feel 242K Dates: 5/5 to 7/20/24



Mr SR Mic Drop G1534,
AI Sire



WS Miss Sugar C4, Grandam



Gonsior Mandy M120, Full Sib
selling as Lot 80

LOT 108 **Gonsior Lucious L105**

Hetero Black Homo Polled Purebred SM Cow

#4291449 • Tattoo: L105 • BD: 3/27/23 • Act. BW: 68 • Adj. WW: 601

CE	BW	WW	YW	ADG	MCE	MM	MWW	STAY
15	1.3	90	138	.30	9	24	69	14
15%		20%	20%	20%	10%		25%	

DOC	CW	YG	MARB	BF	REA	API	TI
15.7	55.1	-.44	.50	-.071	1.40	157	96
10%	3%	25%	15%		1%	20%	10%

CDI INNOVATOR 325D
W/C SUGAR DADDY 9002H
 WS MISS SUGAR C4
 IR IMPERIAL D948
GONSIOR JAZLYNN J6
 KBHR MS ALL ABOARD G255

- L105 may be later in the catalog, but she offers incredible style & numbers
- This Sugar Daddy daughter has 11 EPD traits in the top 20% of the breed
- A rare combination of top calving ease and maximum growth
- Big carcass too, with top 10% marbling and 1% REA
- This good looking, young heifer can work in a serious numbers production operation
- She sells bred to our Hilger One son, Cast 343L

Pasture Sire: Cast CC 343L Dates: 5/5 to 7/20/24
 Est. Plan Mating EPDs: 15 -1.4 83 130 .29 8 27 68 13 15.3
 Carcass: 50.6 -.37 .49 -.06 1.20 159 95

LOT 109 **Miss Poly Ann L71**

DbI Black DbI Polled Purebred SM Cow

#4275934 • Tattoo: L71 • BD: 1/25/23 • Act. BW: 85 • Adj. WW: 603

CE	BW	WW	YW	ADG	MCE	MM	MWW	STAY
10	2.0	79	116	.23	4	26	65	15
						30%		

DOC	CW	YG	MARB	BF	REA	API	TI
13.3	24.9	-.37	.23	-.056	.92	131	81
30%							

THSF LOVER BOY B33
YARDLEY STANDOUT E270
 MISS YARDLEY C136
 RBS BEACON F555
MFED VELVET REVOLVER 221J
 CSV STEEL MAGNOLIA

- A Double JR bred heifer with a good look
- She's long bodied with a very feminine front
- Sired by a Lover Boy son; she's got balanced numbers across the board
- She sells bred natural to Western Feel to calve in March

Pasture Sire: TRIF Western Feel 242K Dates: 5/5 to 7/20/24
 Est. Plan Mating EPDs: 14 -.7 84 124 .25 7 29 71 17 16.5
 Carcass: 31.6 -.23 .64 -.04 .68 168 97

TRIF Western Feel
242K, Pasture Sire



SPECIAL GENETIC OPPORTUNITIES



Gonsior/BD Steelcotton D35

LOT 110

Selling 3 Sexed Female Embryos

Gonsior/BD Steelcotton D35 x W/C Bet On Red

Est. Plan Mating EPDs: 13 0.1 64 98 .21 6 19 51 12 11.3
Carcass: 26.0 -.69 -.07 -.06 .98 111 66

- One of our newer matings with big potential
- The \$10,000 D35 had a successful show career in Oklahoma and has been a solid producer
- Last fall she had twins, the red baldy heifer was awesome but a freemartin. Naturally, we decided to try and replicate her
- D35 is super long made, pretty fronted, very sound and has a perfect udder
- Maternal sib to the great Miley Cottontail
- Get these in and hope for red!
- Selling 3 sexed female embryos; guarantee 1 pregnancy

LOT 111

Selling 3 Embryos

Gonsior/BD Steelcotton D35 X Winc All Right

Est. Plan Mating EPDs: 13 -.09 67 99 0.2 7 24 57 14 10.9
Carcass: 24.9-0.4 -.13 -.06 .97 114 68

- See the notes above, now add in the phenom Winc All Right
- He's turned lots of heads; only natural to try him on this beauty
- Get some cool made black ones here; bull or heifer, you'll like them.
- Selling 3 embryos, guarantee one pregnancy.



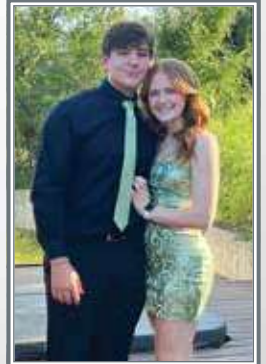
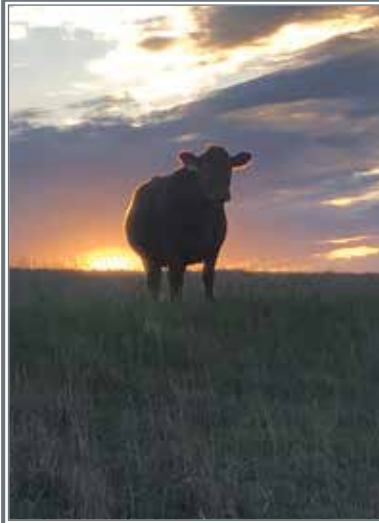
W/C Bet On Red



Winc All Right



GONSIOR SIMMENTALS



Gonsior Simmentals

25TH ANNUAL

"In The Heartland"

Production Sale – Video Sale

Saturday, March 8, 2025

12:30 PM at the Gonsior Sale Facility,
Fullerton, NE

*Selling 111 Lots of Simmental,
SimAngus™, Red Angus & Angus*

STRONG AGE & YEARLING BULLS,
FANCY OPEN HEIFERS & BREDS/PAIRS
+SPECIAL GENETIC LOTS!



Eberspacher Ent. Inc.

2904 County Road 6
Marshall, MN 56258

First Class Mail: Time Dated Material!

Presorted
First Class
US Postage
PAID
SlateGroup



FULLERTON, NEBRASKA

MARCH 8

