

A cow with a white face and dark body stands in a grassy field at sunset. The sun is low on the horizon, creating a warm orange glow. Other cows are visible in the background.

ES Eichacker Simmentals And KA Angus

Bull & Female Sale
JOIN US! FRIDAY, MARCH 5TH • 1:00 PM
AT THE EICHACKER SIMMENTAL FARM • SALEM, SD

2 0 2 1

Welcome to our Bull & Female Sale

The Eichacker Simmental Family



Steve & Cathy, Amanda, Dana, Hunter, Taylor, Adam, Judy, Becki & Greg, Bridgett & Brady, Nick, Jordan, Ellie & Emmitt



Herdsman, Paul, Lindsay, Sawyer, Hayden and Lincoln Grace



Zac Heumiller



The Kummer Crew!

Welcome to the Eichacker Simmentals/JK Angus Production Sale. That's right, JK Angus is back this year full force offering over 30 Angus bulls in the sale. The boys brought the bulls over for some pictures and videos the other day and I can honestly say this is the most consistent set of bulls, top to bottom, they have offered. Trust me, I wouldn't give Jeff the satisfaction if it weren't true.... Welcome Back Jeff & Family!

For all of us, it's been quite a year! If you go back a year ago at our 2020 Production Sale, COVID wasn't even talked about or hardly a thought, it was business as usual. Two weeks later breeders were wondering if they should even host a sale or not! The spring found Grandma Cathy trying to be a school teacher to the grandkids as they would spend the week at the farm so their mom & dad could continue to work at their jobs. I don't know if they learned anything or not, or maybe what they learned on the farm can't be taught in books or on a computer as they witnessed calves being born and crops being planted and building a tree fort in the shelter belt. One

thing is for sure, Cathy has a new-found appreciation for teachers!!

The early summer found us changing gears as we helped with the Simmental National Classic which was moved to Brookings, SD on a 1 1/2 month notice. I'm happy to say it was one of the best classics ever as people came from across the country. The comments we received from the participants and families attending made us grateful for where we live, South Dakota is a good place!

A takeaway from all this is that the farmers and ranchers across America are pretty darn important. Last spring when the supermarket meat cases were empty, and burger was \$8/lb. there was panic, suddenly Hollywood and sports figures weren't as important as they thought. It was the American farmer and rancher. Heck, we were right up there with toilet paper!!

Welcome to the fast world of genomics and EPD's. I'm happy to say we participated in the inaugural year of the Calf Crop Genomic (CCG) program where DNA is submitted on the entire calf crop, which results in higher EPD accuracy, rather than submitting data on only a few top end bulls. Along with that comes parent verification and homo black and polled identification on each bull in the offering.

Simmental cattle are on a high like we have never seen before. It's now cool or almost a must to have a Simmental show heifer in the barn. The data presented by Superior Livestock shows Simmy or Simmy cross calves are consistently outselling straight bred cattle day after day and is on the increase. Simmental replacement females are topping sales in the sale barns across America. People are proud to call them Simmentals.

Huge thanks to Glen Kummer, Kurt, Heath, and the rest of the crew over at Glen's. They are given the task of raising most of our embryo calves. Heck of a job they do, and I felt this was top to bottom the most consistent set of ET calves we have brought home as is evident when you go through the pens and look at the full brothers.

The sale format will be the same as past years. Videos will be on our website a couple weeks prior to the sale, as we will have a video auction on DV Auction.

The cattle are always available for viewing prior to the sale. The Simmentals and the bred heifers are at ES and the Angus bulls are at JK Angus about 15 miles apart.

Thanks again for your interest, trust, and loyalty to our programs, it is not taken lightly. If there is anything we can do, don't hesitate to give any of us a call if you have any questions. See you sale day!

Eichacker Simmentals & JK Angus

SALE DAY PHONES:

Videos will be available at www.eichackersimmentals.com or www.ebersale.com

Steve Eichacker 605-421-1152

Paul Grace 605-261-5851

Adam Eichacker 605-421-0554

Val Eberspacher 612-805-7405

Jef Kapperman 605-940-5104

LIVE BIDDING AT

DVAuction
Broadcasting Real-Time Auctions

**VIDEO AUCTION ON
ALL CATTLE!**

• No cattle will go through a sale ring •



Friday, March 5, 2021 at 1:00 PM At Eichacker Simmentals, Salem, SD

DIRECTIONS TO SALE SIGHT: Eichacker Simmental Farm, Salem SD: Exit 368 (Canistota) on Interstate 90, go 2 miles North, Eichacker Farm is on the East side of the road. From Salem: Hwy 81 & 38 intersection, go 4 miles East and 1.5 miles South. Farm is on the East side of the road.

SCHEDULE: Cattle may be viewed at the farm any time prior to Friday, March 5, 2021.
Friday, March 5 Cattle on Display at Eichacker Simmentals
Complimentary Lunch Served 11:00 AM
Eichacker Simmental Bull & Female Sale 1:00 PM

Featuring Simmental, Red Angus & Angus Bulls & Females



Motels

Best Western U-Bar Motel, Canistota, SD 605-296-3466
Hampton Inn, Mitchell, SD 605-995-1575
Quality Inn & Suites, Sioux Falls, SD 605-336-1900

Terms of Sale

All cattle will sell under the suggested sale terms and conditions of the American Simmental Association. Terms available sale day.

Announcements

Announcements made sale day and from the block take precedence over printed material in sale catalog. Anyone attending this sale attends at their own risk. Eichacker Simmentals or any of the sale force will not be held responsible for any personal injury while attending this sale.

EPDs

All Simmental bulls have genomic enhanced EPDs. All females are BOLT 1/26/21 numbers.

Feeding & Delivery

We will offer to feed the bulls at no charge until April 15, 2021. At that time, they will be semen tested and delivered free of charge up to 300 miles. We will assist in making the most economical arrangements possible beyond that. We are not responsible for any injury or death to the bulls while in our care.

Insurance

Insurance will be available, details will be announced sale day. In no case will seller be responsible for more than the purchase price of the bull.

Health

All bulls have been tested negative for BVD/PI. All cows are Johnes free. All genetic defect testing has been completed.

Sale Management

Sale Managed by Eberspacher Enterprises, Inc.
Val & Lori Eberspacher • sales@ebersale.com • www.ebersale.com
EE Office 507-532-6694
Val Eberspacher Cell 612-805-7405

Guest Breeder: JK Angus

Jeff & Sue Kapperman

605-363-3302 Home • 605-940-5104 Cell

Auctioneer

Col. Tracy Harl 402-461-3575

Marketing Representatives

Val Eberspacher, EE Sales 612-805-7405
Jim Scheel, Cattle Business Weekly 605-545-1521
Randy Rasby, Livestock Plus 308-539-6195
Jeff Kapperman, Tri-State Neighbor 605-940-5104
Daniel Wiedenbach, ASA Representation 605-870-0576
Dustin Carter, Special Assignment 712-898-9972
Chris Effling, Special Assignment 605-769-0142
Myron Benes, Special Assignment 402-741-2040
Marty Ropp, Allied Genetics 406-581-7835
Rocky Forseth, Allied Genetics 406-590-7984
Justin Dikoff, DV Auction 605-290-0635

Calving Ease Score ★ ★ ★ ★

We have put a column in with a CE Score with 1, 2, 3 or 4 stars. 1 star being harder calving and 4 stars being the easiest caving. It is just our opinion of what you could expect taking into consideration the BW, EPDs, pedigree and structure of the bull.

Semen Interest

Eichacker Simmentals will retain 1/4 revenue sharing semen interest in all ES bulls selling. This means if we would like to collect semen on the bull for our own use, we would have the option to do so. Also, if semen is sold we would retain 1/4 revenue. The new owners of the bulls will have full possession and full salvage value.

Adjusted Scrotal

Actual scrotal measurements were taken on 1/25/21, then adjusted to a year of age using each breed's own formula for adjusted scrotal measurements.

Weight Per Day of Age (WDA)

WDA is the weight of a bull on 1/25/21 divided by the days of age.

134 Day Weight

The 134 day gain was the average daily gain from the weaning weight until 1/25/21.

Homozygous & Heterozygous

A homozygous black bull when mated to any black cows will give you a black calf. A heterozygous black bull carries a red gene, but when mated to black cows will give you a black calf unless your black cow carries a red gene. Then you have a slight chance of getting a red calf, but neither will sire gray calves on black cows.

Improved Buying Confidence with Greater Genomic **ASSURANCE**

Access to more and better information has always been key to making wise decisions. The evolution and improvement of genetic evaluation tools too has given us an ever-clearer picture of the true genetic makeup of cattle and thus a better view of the value proposition. RightMate, powered by Top Genomics LLC is taking the evaluation of genetics and genomics one giant step further. By combining specific genomic information with the long-proven value of EPDs, this new advancement in technology improves our depth and precision when evaluating the actual ability to transmit value and profit.

The 3 Accreditation Logos below are designed to simplify bull selection and improve buyer confidence by more accurately describing the genetics offered and by reducing risk. What this means to you as a customer is a much greater assurance that you are getting both what you want and need from the genetics you purchase. What it means to your seedstock provider is access to RightMate technology that simply sets them apart from the rest of the industry.



ACCREDITED GENOMIC PLUS – For the majority of producers who simply need consistent and balanced genetic improvement, without genomic setbacks, G+ Accredited bulls should be on your list for premium purchase. These sires will absolutely move you forward for both cost reduction and income producing traits and substantially reduce risk when compared to all other evaluation programs. It's simple, the right genes are in these bulls to help secure a profitable future and they have great EPDs to match!



ACCREDITED CALVING EASE – Simply find bulls with the ACE logo for third party Accredited, secure Calving Ease bulls. Though we have had tools in the past to assist in choosing heifer bulls, we've never had one nearly this effective. The reduced risk that comes with this genomic certification will simply make your decisions easier and your heifer calving season more successful. Purchase special purpose ACE bulls with confidence. They will deliver consistent and predictable calving ease.



ACCREDITED TERMINAL MATE – Just like an ATM machine makes it simpler to access your cash, the ATM Logo highlights bulls accredited to generate extra cash income as soon as your next calf crop! These bulls are meant specifically to use only on mature cows and for the purpose of adding performance, pay weight and end product value to market.

MARTY ROPP 406-581-7835

RightMate
powered by TOP GENOMICS

It is with great honor & extreme gratitude that we present these embryo lots in support of the American Simmental-Simbrah Foundation.

With Cathy as a member of the ASF Foundation Board and Steve a member of the ASA Board of Trustees, it's a great way for us to give back to the breed that has been so good to us the past 50 years.

The ASF is a great avenue to support the 4 pillars within the Foundation that consist of Research & Technology, Youth, Education and General. The winning bidder of each embryo lot will have the privilege to designate which pillar the funds will go towards, 100% of the sale of these two lots will be donated.

Foundation Legacy Lot

Offering 2 packages of 3 embryos each
(guaranteeing 1 pregnancy if done by a certified technician)

The winning bid will have the option to mix & match embryos from the various matings if so desired.



ES A110

#2752773

The A110 donor has highlighted past sales with progeny and offers 5 different matings.

- ES A110 X TJ Chief 460G (14 IVF embryos available)
- ES A110 X TJ Gold 274G (7 IVF embryos available)
- ES A110 X CDI Trustee 387F (9 IVF embryos available)
- ES A110 X LBRS Genesis G69 (10 IVF embryos available)
- ES A110 X LCDR Progressive 106G (6 conventional embryos available)



ES Right Time FA110-4



ES GB44

ES B44

#2899634

The ES B44 cow is a red Authority X T202 cow whose calves have been the right kind, so we had to flush her! She is the dam of our high selling red bull last spring, ES GB 44. The Fort Knox mating made a lot of sense to us.

- ES B44 X W/C Fort Knox 609F (8 IVF embryos available)

ES D55

#3185548

ES D55 is the dam of lots 1 & 2 and a rising star in our program.

- ES D55 X CDI Trustee (1 IVF embryo available)

ES B34

#2899664

Look at the full brothers, lots 71-75, in the bull division.

- ES B34 X WS All Aboard B80 (8 conventional embryos available)

ES W46

#2504174

Take a look at the 2 full brothers Lots 10 & 11 in the bull division.

- ES W46 X Mr NLC Upgrade U8676 (4 conventional embryos available)



ES HD55-2, Lot 1



ES HD55-1, Lot 2



ES HW46-1, Lot 10



ES HW46-2, Lot 11

1 ES HD55-2

CE SCORE



CCR Cowboy Cut 5048Z

WS Proclamation E202

WS Miss Sugar C4

CDI Authority 77X

ES D55

ES Z85

Adj BW	Adj WW	Adj YW
84	701	1302
Adj Scrotal	WDA	134 Day Gain
38.9	3.55	3.77

CE	BW	WW	YW	ADG	MCE	Milk	MWW	Stay	DOC	CW	YG	Marb	BF	REA	API	TI
12	1.2	90	134	.27	6	27	72	18	17.9	39.4	-.38	.57	-.078	.96	164	97
35		10	15	25		25	10	30	2	20		2		30	3	2

REG#3758404 • BD: 2/11/20 • Hetero Black Homo Polled Purebred



We thought this would be a great opportunity to showcase what we feel is one of the rising stars at ES, our D55 cow. These two bulls are absolutely studs. Yes, two different sires and two different colors. There's a lot of bull in the D55-1 All Aboard son, big top, big rear! The D55-2 bull is awfully good, probably impresses us the most is when you get behind him, a real beef machine. Yet with all that power he still has some flex in his rear pasterns. Their dam is everything we ask in a donor candidate, good feet, good udder, good disposition. It's a time-tested pedigree for us, Authority X Beef King X T202, our go to Red Angus donor. It's as predictable of a pedigree as we have had. I know we are suppose to look for something new and different, but if it isn't broken, don't fix it. She really made her splash when her 1st calf heifer sorted her way to the top and we took her to the BHSS and was high selling Simmental heifer bringing \$9,500, making her new home not far away at Windy Creek.

2 ES HD55-1

CE SCORE



WS All-Around Z35

WS All Aboard B80

WS Little Sister W37

CDI Authority 77X

ES D55

ES Z85

Adj BW	Adj WW	Adj YW
106	732	1243
Adj Scrotal	WDA	134 Day Gain
31.4	3.44	3.21

CE	BW	WW	YW	ADG	MCE	Milk	MWW	Stay	DOC	CW	YG	Marb	BF	REA	API	TI
11	1.4	84	121	.23	5	20	62	11	16.6	42.4	-.52	.32	-.100	1.28	132	87
		25	35						4	10	10	15		2		15

REG#3758402 • BD: 2/20/20 • Red Homo Polled Purebred



ES F17, Maternal Sister to Lot 1 & 2



ES D55, Dam to Lot 1 & 2

3 ES HA117-1

CE SCORE



CE	BW	WW	YW	ADG	MCE	Milk	MWW	Stay	DOC	CW	YG	Marb	BF	REA	API	TI
7	1.9	88	125	.23	2	25	69	14	10.4	20.6	-.44	.06	-.075	.92	119	81
		15	25			35	20									30

REG#3758422 • BD: 2/3/20 • **Homo Black Homo Polled Purebred**

Pedigree for Lots 3 & 4:

WS Pilgrim H182U

TKCC Carver 65C

Ford RJ Dolly Y83

Remington Lock N Load 54U

ES A117

ESU56

Adj BW	Adj WW	Adj YW
83	686	1244
Adj Scrotal	WDA	134 Day Gain
38.4	3.39	3.51



Here's a fun pair of full brothers to analyze, so complete and similar. Whether it's a side view or going away, they are pretty cool. The best part may be the bottom side of the pedigree, A117, is a full sister to the A110 cow, the mother of ES Right Time and many of the feature bulls. The A117 cow has quietly built her own reputation having sons that went to work at Wayward Hills in KY and Werning's, and three full sisters going to Windy Creek, Barry Ostrom and Lehrman Family Simmentals.

4 ES HA117-2

CE SCORE



CE	BW	WW	YW	ADG	MCE	Milk	MWW	Stay	DOC	CW	YG	Marb	BF	REA	API	TI
9	.9	81	117	.23	1	25	66	11	15.1	21.3	-.38	.20	-.069	.80	122	82
	35	35				35	30		10			30				30

REG#3758423 • BD: 2/12/20 • **Homo Black Homo Polled Purebred**

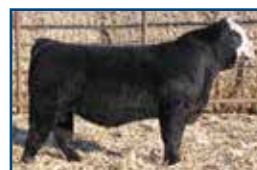
Adj BW	Adj WW	Adj YW
93	719	1301
Adj Scrotal	WDA	134 Day Gain
38.9	3.56	3.66



ES F147, Full Sister to Lot 3 & 4



ES F150, Full Sister to Lot 3 & 4



ES DA117-1, Maternal Brother to Lot 3 & 4



ES FA117-3, Maternal Brother to Lot 3 & 4

5

ES HA110-2

CE SCORE

★★★★

CE	BW	WW	YW	ADG	MCE	Milk	MWW	Stay	DOC	CW	YG	Marb	BF	REA	API	TI
10	1.1	78	124	.29	4	28	67	16	16	41.2	-.13	.41	-.026	.62	136	81
			30	30		15	20	35	10	25		30			35	35

REG#3758400 • BD: 2/7/20 • **Homo Black Homo Polled 5/8 SM 3/8 AN**

CCR Cowboy Cut 5048Z
 TJ Franchise 451D
 TJ Miss Net Worth U11
 Remington Lock N Load 54U
 ES A110
 ESU56

Adj BW	Adj WW	Adj YW
83	626	1266
Adj Scrotal	WDA	134 Day Gain
36.2	3.43	4.03



5

I can't say enough about the dam of these two, she just gets it done each year. Her son, ES Right Time, selected by CK Cattle a couple of years ago has created a lot of excitement in the Simmental breed the last couple of months. The past couple of years her sons have been highlights with most going to great homes. In the past five sales, 10 sons have averaged \$8,250. I'm just going to be honest, the Franchise bull is my favorite of the two. He's very complete with a great hoof like his mother, He's also long sided and plenty of muscle, he was also a top 10 bull for gain since weaning. The Proclamation son, let's just say I think we got spoiled with how good his full brothers were.



6

ES HA110-3

CE SCORE

★★★★

CE	BW	WW	YW	ADG	MCE	Milk	MWW	Stay	DOC	CW	YG	Marb	BF	REA	API	TI
10	-.1	87	127	.25	5	28	72	17	11.4	45.3	-.39	.35	-.089	1.00	148	91
		20	15	25		20	10			10		10		25	15	5

REG#3758420
BD: 2/12/20**Homo Black
Homo Polled
Purebred**

CCR Cowboy Cut 5048Z
 WS Proclamation E202
 WS Miss Sugar C4
 Remington Lock N Load 54U
 ES A110
 ESU56

Adj BW	Adj WW	Adj YW
76	681	1180
Adj Scrotal	WDA	134 Day Gain
35.9	3.25	3.13

ES A110, Dam of Lots 5 & 6

ES Right Time FA110-4



Maternal Brother
to Lot 5 & 6



ES GA110-1, Maternal Brother to Lot 5,
Full Brother to Lot 6



ES GA110-2, Maternal Brother to Lot 5,
Full Brother to Lot 6



ES GA110-3, Maternal Brother to Lot 5 & 6



ES FA110-1, Maternal Brother to Lot 5 & 6



ES FA110-2, Maternal Brother to Lot 5 & 6



ES FA110-3, Maternal Brother to Lot 5 & 6



ES Right Time FA110-4, Maternal Brother
to Lot 5 & 6

7

ES H480B-1

CE SCORE



CE	BW	WW	YW	ADG	MCE	Milk	MWW	Stay	DOC	CW	YG	Marb	BF	REA	API	TI
10	1.5	85	138	.33	6	27	70	14	17.8	41.7	-.01	.23	.000	.46	122	80
		15	10	10		15	10		2	25						

REG#3758397 • BD: 2/9/20 • Hetero Black Homo Polled 1/2 SM 1/2 AN

CCR Cowboy Cut 5048Z
TJ Franchise 451D
TJ Miss Net Worth U11
Remington Lock N Load 54U
W/C Miss Werning 480B
Bushs Big Blackbird 7880

Adj BW	Adj WW	Adj YW
103	645	1291
Adj Scrotal	WDA	134 Day Gain
36.8	3.50	4.07



These two are full brothers but there is a difference, ES HB480B (Lot 8) is her natural calf the other is an ET calf. If you're looking for some bull power with a bit more frame and stretch, these two ought to be on your list. Their dam is also the mother of Upper Edge, purchased by Quandt Bros a few years back, she also has a WW ratio of 106 on her natural calves.

*Full Brothers
by Franchise*

8

ES H480-B

CE SCORE



CE	BW	WW	YW	ADG	MCE	Milk	MWW	Stay	DOC	CW	YG	Marb	BF	REA	API	TI
4	6.0	89	143	.33	2	27	72	15	17.7	48.1	-.15	.39	-.039	.67	120	80
		10	10	10		15	10		3	10		35				

REG#3758333 • BD: 2/8/20 • Hetero Black Homo Polled 1/2 SM 1/2 AN

CCR Cowboy Cut 5048Z
TJ Franchise 451D
TJ Miss Net Worth U11
Remington Lock N Load 54U
W/C Miss Werning 480B
Bushs Big Blackbird 7880

Adj BW	Adj WW	Adj YW
114	676	1245
Adj Scrotal	WDA	134 Day Gain
40.7	3.47	3.58



TJ Franchise 451D, Sire

ES D24, Maternal Sister
to Lot 7 & 8

9 ES HD18CE SCORE
★★★

CE	BW	WW	YW	ADG	MCE	Milk	MWW	Stay	DOC	CW	YG	Marb	BF	REA	API	TI
11	3.4	88	137	.30	6	25	69	17	12.9	61.1	-.13	.27	-.017	.93	131	81
		10	15	25		35	15	20	35	2				10		35

REG#3758239

BD: 3/30/20

Homo Black
Homo Polled
5/8 SM 3/8 AN

CCR Cowboy Cut 5048Z

TJ Franchise 451D

TJ Miss Net Worth U11

W/C United 956Y

ES D18

ES B2

Adj BW	Adj WW	Adj YW
89	632	1128
Adj Scrotal	WDA	134 Day Gain
36.0	3.19	3.13

His sire, TJ Franchise, was at CGS being collected a short two years ago, during his stay there most Simmental breeders that saw him ended up ordering semen. He's a very attractive, moderate, square-made individual that has indicators he should sire large carcass weight cattle with big ribeyes.



ADAM EICHACKER 605.421.0554
SALEM, SOUTH DAKOTA

10 ES HW46-1CE SCORE
★★★

CE	BW	WW	YW	ADG	MCE	Milk	MWW	Stay	DOC	CW	YG	Marb	BF	REA	API	TI
16	1.0	77	114	.23	8	21	59	10	11.6	29.5	-.35	.11	-.060	.88	113	74
		15									20		35	15		

REG#3758406 • BD: 2/8/20 • Homo Black Homo Polled 3/4 SM 1/4 AN

Adj BW	Adj WW	Adj YW
81	740	1213
Adj Scrotal	WDA	134 Day Gain
34.7	3.38	2.99

Pedigree for Lots 10 & 11:
Ellingson Legacy M229
Mr. NLC Upgrade U8676
Ms. NLC Mojo S6119B
S A V Net Worth 4200
ES W46
ESS63

11 ES HW46-2CE SCORE
★★★

CE	BW	WW	YW	ADG	MCE	Milk	MWW	Stay	DOC	CW	YG	Marb	BF	REA	API	TI
13	.8	84	126	.26	5	21	63	11	12.2	40.1	-.39	.30	-.082	.98	127	83
		20	25				35			25	10		10	10		30

REG#3758408 • BD: 2/9/20 • Homo Black Homo Polled 3/4 SM 1/4 AN

Adj BW	Adj WW	Adj YW
95	748	1257
Adj Scrotal	WDA	134 Day Gain
33.8	3.49	3.21



10

When these two flush brothers sell my advice is simple, just raise your hand until the auctioneer says you own them, congratulations that was a hell of a buy!! I've studied these two very close in the lot and I can't pick them apart. The only slight difference is W46-1 is a bit looser made and W46-2 a tic cleaner in his neck and sheath. But both are absolute trucks with a great foot and leg set. Now for what you don't know but we do here at ES is how good the W46 cow is, she's not a big cow frame wise, but she is in terms of width and depth. Tremendously sound with an udder of a 3-year-old and she is now 12 years old. She also has a WW ratio of 106 on 6 natural calves. I know that doesn't add up, 6 calves and a 12-year-old cow, but we held her open to flush several times.



ES FW46-4, Full Brother to Lot 10 & 11



ES GW46-4, Full Brother to Lot 10 & 11



11

12 ES H104C

CE	BW	WW	YW	ADG	MCE	Milk	MWW	Stay	DOC	CW	YG	Marb	BF	REA	API	TI
10	1.6	90	134	.28	5	25	69	16	8.6	46.3	-.29	.05	-.070	.82	118	78
		10	15	35		35	10	35		15	35		25	25		

REG#3758388 • BD: 3/18/20 • Homo Black Homo Polled 3/4 SM 1/4 AN

Welshs Dew It Right 067T
 ES Right Time FA110-4
 ES A110
 W/C United 956Y
 Hook's Charity 104C
 Hook's Upper Limit 117U

Adj BW	Adj WW	Adj YW
95	699	1298
Adj Scrotal	WDA	134 Day Gain
39.8	3.66	3.77



This guy is just a little special, he combines two great cow families, A110 on the top side and Hook's Charity on the bottom. The A110 is our lead donor and Hook's Charity is a soft made, huge ribbed female who has two full sisters that are past champions at the NWSS. If you're a sucker for a big hip and rear end (in cattle) like I am, take a serious look at this guy.



ES E104C, Maternal Brother to Lot 12



ES G104C, Maternal Brother to Lot 12

**13 ES HZ23**

CE	BW	WW	YW	ADG	MCE	Milk	MWW	Stay	DOC	CW	YG	Marb	BF	REA	API	TI
13	-2.7	57	96	.18	6	24	52	23	6.1	18.7	-.18	.45	-.044	.34	152	74
	35	10						1				25			10	

REG#3758435
BD: 3/19/20

Homo Black
 Homo Polled
 3/4 SM 1/4 AN

Welshs Dew It Right 067T
 ES Right Time FA110-4
 ES A110
 GDAR Game Day 449
 ES Z23
 ES X59

Adj BW	Adj WW	Adj YW
69	643	1207
Adj Scrotal	WDA	134 Day Gain
39.9	3.43	3.54



ES D34, Maternal Sister to Lot13

What an opportunity here, a Right Time son that has the ACE accreditation stamp of being heifer safe. I would also consider him a great candidate to retain some replacement females out of. Game Day, the sire of his dam, was known as a female maker to reaffirm that we gave his dam a 9 on udder score last spring, she's 9 years old.



ES G13, Maternal Sister to Lot 14; Sells as Lot 144

14 ES HE12

CE	BW	WW	YW	ADG	MCE	Milk	MWW	Stay	DOC	CW	YG	Marb	BF	REA	API	TI
11	.4	93	143	.31	6	25	71	18	14.0	39.7	-.23	.42	-.074	.53	149	91
		4	10	20		30	10	15	25	30		30	15		15	10

REG#3758359
BD: 4/6/20

Homo Black
 Homo Polled
 3/4 SM 1/4 AN

Welshs Dew It Right 067T
 ES Right Time FA110-4
 ES A110
 W/C Lock Down 206Z
 ES E12
 ES C13

Adj BW	Adj WW	Adj YW
74	630	1126
Adj Scrotal	WDA	134 Day Gain
35.9	3.13	3.13

With some caution this guy could probably go 4 stars calving ease. He has a nice calving ease look along with a 74 lb birth weight. The only reason I didn't, he doesn't have the ACE logo. What is really cool is he carries the other two markers G+ & ATM. His young dam is off to a good start, his maternal sister sells in the heifer division, Lot 144.

15 ES HE70

CE SCORE



CE	BW	WW	YW	ADG	MCE	Milk	MWW	Stay	DOC	CW	YG	Marb	BF	REA	API	TI
12	2.9	95	147	.32	4	22	70	15	14.1	47.1	-.33	.18	-.063	1.04	137	88
		3	3	10			15		15	5		35		20	30	10

REG#3758437 • BD: 3/20/20 • **Homo Black Homo Polled Purebred**

He will entice some friends sale day for a multitude of reasons, or maybe it's because there are no reasons not to appreciate him. He's physically impressive and when you turn to the data, he has WW & YW ratios of 109 & 106, and EPDs in the top 5% of the breed to back it up. He ranks high in the breed in many economically important traits.

Welshs Dew It Right 067T
 ES Right Time FA110-4
 ES A110
 W/C United 956Y
 ES E70
 ES B10

Adj BW	Adj WW	Adj YW
91	703	1253
Adj Scrotal	WDA	134 Day Gain
36.9	3.44	3.47



15

16 ES HC47

CE SCORE



CE	BW	WW	YW	ADG	MCE	Milk	MWW	Stay	DOC	CW	YG	Marb	BF	REA	API	TI
9	2.2	88	139	.32	3	23	67	18	10.6	50.8	-.18	.25	-.054	.69	131	82
		10	10	15			20	20		10			35			35

REG#3758270
 BD: 4/5/20

Homo Black
Homo Polled
3/4 SM 1/4 AN

Welshs Dew It Right 067T
 ES Right Time FA110-4
 ES A110
 W/C United 956Y
 ES C47
 ESU27

Adj BW	Adj WW	Adj YW
97	644	1147
Adj Scrotal	WDA	134 Day Gain
36.8	3.29	3.17



ES EC47, Maternal Brother
 to Lot 16

Little younger bull that offers some genetic potential. Right Time on the top side and his dam, C47, on the bottom and mother of a top end bull going to Jones & Klumba a couple of years ago. She also got a 9 each year for udder score. A well-rounded bull on the RightMate program, showing up as a G+/ATM.



ES Right Time FA110-4, Sire of Lots 12-17

17 ES HB94

CE SCORE



CE	BW	WW	YW	ADG	MCE	Milk	MWW	Stay	DOC	CW	YG	Marb	BF	REA	API	TI
6	2.5	91	150	.37	1	26	71	17	8.7	47.6	-.24	.14	-.058	.78	121	81
		10	3	2		25	10	25		10			35	30		35

REG#3758373 • BD: 2/9/20 • **Homo Black Homo Polled 3/4 SM 1/4 AN**

Welshs Dew It Right 067T
 ES Right Time FA110-4
 ES A110
 W/C United 956Y
 ES B94
 ESU56

Adj BW	Adj WW	Adj YW
106	654	1348
Adj Scrotal	WDA	134 Day Gain
39.8	3.68	4.37



17

There's a lot to touch on with these two bulls. First off ES HB94 (Lot 17) is the natural calf of the B94 cow. The Black Powder son is an ET calf. The sire, ES Right Time, is just making his mark in the Simmental breed siring the champion Simmental heifer at Fort Worth and Reserve Calf Champion in Oklahoma. ES Right Time also sired Kipp Julson's lead off bull and high selling bull just a few days ago. The other sire, Black Powder, has highlighted the past several sales at Trinity Farms with consistent sale toppers. I get real excited about the B94 cow. She is mid-sized and an easy keeper with an excellent udder. She is the dam of ES Epic, our high selling bull in 2018 going to Wayward Hills Farm in Kentucky. We kept her open 1 year to flush, but her four natural calves have WW & YW ratios of 108 & 109. Check out their maternal sister, Lot 138 in the bred division. Note the gainability of the two, the Right Time son was the #1 gaining bull since weaning and the top end WDA. The Black Power son was #6 ADG.

18 ES HB94-1

CE SCORE



CE	BW	WW	YW	ADG	MCE	Milk	MWW	Stay	DOC	CW	YG	Marb	BF	REA	API	TI
11	-1.3	90	143	.33	6	24	69	18	9.9	32.1	-.24	.00	-.027	.83	127	81
	20	10	10	10		10	10	20						20		35

REG#3758434 • BD: 1/30/20 • **Homo Black Homo Polled 5/8 SM 3/8 AN**

Remington Lock N Load 54U
 TFS Black Powder 6609D
 TFS Black Moon 0210
 W/C United 956Y
 ES B94
 ESU56

Adj BW	Adj WW	Adj YW
85	670	1316
Adj Scrotal	WDA	134 Day Gain
38.2	3.56	4.07



18



ES Epic EB94, Maternal Brother to Lot 17 & 18



ES FB94, Maternal Brother to Lot 17 & 18

19 ES HA4

CE SCORE



Remington Lock N Load 54U
 TFS Black Powder 6609D
 TFS Black Moon 0210
 W/C United 956Y
 ES A4
 ESU56

Adj BW	Adj WW	Adj YW
89	729	1334
Adj Scrotal	WDA	134 Day Gain
36.7	3.77	3.81

CE	BW	WW	YW	ADG	MCE	Milk	MWW	Stay	DOC	CW	YG	Marb	BF	REA	API	TI
10	1.9	97	155	.36	5	26	74	17	10.6	52.9	-.39	.06	-.058	1.32	126	84
		2	2	3		25	3	25		4	10		35	1		25

REG#3744881 • BD: 3/15/20 • **Homo Black Homo Polled 5/8 SM 3/8 AN**

There's going to be a lot of hands in the air when this guy comes up on the big screen. My short note I wrote in the pen was "I like A LOT!". Everything from structure, muscle to a nice high head set to give that extra eye appeal. He's spot on, what really puts him over the top is he's the #3 WDA bull. His dam has a whopping 110 WW ratio on six calves.. that's consistency.

**19****20 ES HB26**

CE SCORE



Remington Lock N Load 54U
 TFS Black Powder 6609D
 TFS Black Moon 0210
 W/C United 956Y
 ES B26
 ES Z2

Adj BW	Adj WW	Adj YW
88	603	1262
Adj Scrotal	WDA	134 Day Gain
37.6	3.55	4.14

CE	BW	WW	YW	ADG	MCE	Milk	MWW	Stay	DOC	CW	YG	Marb	BF	REA	API	TI
11	-1.0	90	142	.33	7	19	64	13	12.1	40.4	-.17	.02	-.027	.72	119	81
		25	10	10		30	30			25						35

REG#3758244 • BD: 3/14/20 • **Homo Black Baldy Homo Polled 5/8 SM 3/8 AN**

Mike & Robb Forman at Trinity Farms in Washington were right, these Black Powder calves consistently have a nice look to them. Not only that, but they can grow. This attractive blaze-faced son was the #4 gaining bull since weaning, note his WW & YW EPD's, top 10% of the breed. This is his mother's 4th bull and all have made the cut to be in the bull sale.

**20**

21 ES HZ45

CE	BW	WW	YW	ADG	MCE	Milk	MWW	Stay	DOC	CW	YG	Marb	BF	REA	API	TI
10	.9	84	123	.25	4	26	68	14	10.4	17.9	-.33	.16	-.062	.66	120	79
		20	35			25	15				20		25			

REG#3758197 • BD: 3/17/20 • Hetero Black Homo Polled 5/8 SM 3/8 AN



21

W/C Bankroll 811D
W/C Fort Knox 609F
K-Ler Dolly's Queen 609D
O C C Prototype 847P
ES Z45
ESU91

Adj BW	Adj WW	Adj YW
109	679	1267
Adj Scrotal	WDA	134 Day Gain
36.3	3.61	3.69

Oh grandpa, hang on to your teeth when this guy shows up on the big screen!! There's a hell of a wow factor and when your jaw drops, we don't need to be looking for your dentures in the wood chips. One of the larger framed Fort Knox sons in the offering and offers some impressive WW & YW ratios. Be sure to check out his maternal sister, Lot 142 in the bred division, there is another Cowboy Cut daughter out of this dam in our herd that is impressive.



W/C Fort Knox 609F, Sire to Lots 21-27

Sons of W/C Fort Knox



22

22 ES H234Z

CE	BW	WW	YW	ADG	MCE	Milk	MWW	Stay	DOC	CW	YG	Marb	BF	REA	API	TI
10	2.9	85	129	.27	5	28	70	11	9.2	27.2	-.34	.30	-.042	.97	119	81
		15	25			15	10				20			10		35

REG#3758320
BD: 3/15/20Hetero Black
Homo Polled
5/8 SM 3/8 AN

W/C Bankroll 811D
W/C Fort Knox 609F
K-Ler Dolly's Queen 609D
ES Power Up XS37
WINC Dora 234Z
Miss Werning 472P

Adj BW	Adj WW	Adj YW
91	690	1195
Adj Scrotal	WDA	134 Day Gain
36.7	3.39	3.17

Some of these Fort Knox calves are going to be very interesting and this is one of them. He's garnered our attention since he was a baby. He's got the same soft foot structure as his mother Dora who came from Windy Creek and was a show heifer for Adam. What I really liked about her is she has made a great cow, we score her udder very high each spring. Also had a WW ratio of 107.



23

23 ES HY11

CE	BW	WW	YW	ADG	MCE	Milk	MWW	Stay	DOC	CW	YG	Marb	BF	REA	API	TI
7	5.9	93	129	.22	3	29	76	17	13.4	39.1	-.49	.07	-.106	1.08	118	80
		5	20			15	4		25	20	20		20	15		35

REG#3758345
BD: 4/8/20Homo Black
Homo Polled
Purebred

W/C Bankroll 811D
W/C Fort Knox 609F
K-Ler Dolly's Queen 609D
TNT Knock Out R206
ES Y11
ESR27

Adj BW	Adj WW	Adj YW
108	805	1306
Adj Scrotal	WDA	134 Day Gain
37.0	3.70	3.13

It should be no surprise this big-framed Fort Knox son showed up with an ATM logo. His mom flat got it done, bringing home the #1 WW bull ratioing 125, as you would expect, he was also a top end WDA individual. His dam has had 8 calves, the unique part is they have all been bulls and happy to say all but one has made past bull sales. If you want to incorporate some frame and stretch into your calves, he may be the answer. One of the larger framed bulls in the offering and as long as a train.

ES EY11, Maternal Brother



24 ES HX16

CE SCORE



W/C Bankroll 811D
W/C Fort Knox 609F
K-Ler Dolly's Queen 609D
Ellingson Legacy M229
ES X16
ESU16

Adj BW	Adj WW	Adj YW
70	613	1196
Adj Scrotal	WDA	134 Day Gain
37.5	3.35	3.66

CE	BW	WW	YW	ADG	MCE	Milk	MWW	Stay	DOC	CW	YG	Marb	BF	REA	API	TI
19	-1.2	64	93	.18	8	25	57	19	11.7	26.9	-.41	.14	-.079	.89	144	74
3	25				35	30		10			10		15	15	20	

REG#3758315 • BD: 3/21/20

Hetero Black Homo Polled 3/4 SM 1/4 AN

There's something about the X16 offspring, every year they hit the picture pen and BAM another killer photo, her offspring are the real deal and loaded with sex appeal. His picture is good but I actually think he's even better on the hoof. A couple of years ago I tagged his maternal brother the "Tom Brady" of the bull pen. As of this writing, he's even taking the Buccaneers to the super bowl, wonder what the odds in Vegas were on that a year ago? News flash....at 10 years of age, we gave his dam a 9+ on udder score.



ES EX16, Maternal Brother



ES D37, Maternal Sister



24

25 ES HE9

CE SCORE



CE	BW	WW	YW	ADG	MCE	Milk	MWW	Stay	DOC	CW	YG	Marb	BF	REA	API	TI
10	1.0	83	121	.24	4	29	71	17	12.2	42.6	-.31	.35	-.063	.90	145	87
	35	25	35			15	15			10		10			20	15

REG#3758307
BD: 3/18/20**Hetero Black
Homo Polled
Purebred**

W/C Bankroll 811D
W/C Fort Knox 609F
K-Ler Dolly's Queen 609D
Hook's Broadway 11B
ES E9
ES C45

Adj BW	Adj WW	Adj YW
96	705	1262
Adj Scrotal	WDA	134 Day Gain
37.8	3.45	3.51

If I had a to designate a Fort Knox son to retain the females out of, this would be the one. His mother is a Broadway whose udder we scored very high and that's consistent with the Broadways. Study the data set on this cool bull prospect from WW, YW, Marb, to the API indexes, he rises to the top. He also carries the soft structure Fort Knox transmits into his progeny. Also check out the Fort Knox son, Lot 21, out of this guy's great grandam.



25

26 ES HD113

CE SCORE



CE	BW	WW	YW	ADG	MCE	Milk	MWW	Stay	DOC	CW	YG	Marb	BF	REA	API	TI
10	1.7	77	109	.20	5	30	68	15	8.5	39.2	-.38	.04	-.071	1.01	111	71
						5	15			30	15		15	5		

REG#3758266
BD: 3/18/20**Hetero Black
Homo Polled
3/4 SM 1/4 AN**

W/C Bankroll 811D
W/C Fort Knox 609F
K-Ler Dolly's Queen 609D
HS Battle Cry X297K
ES D113
ES A75

Adj BW	Adj WW	Adj YW
94	671	1108
Adj Scrotal	WDA	134 Day Gain
33.8	3.10	2.76

He has the style and eye appeal that Fort Knox consistently stamps his calves with. He's a moderate framed individual that has milk and ribeye EPDs that rank him in the top 5% of the breed.



26

27 ES HC49

CE SCORE



CE	BW	WW	YW	ADG	MCE	Milk	MWW	Stay	DOC	CW	YG	Marb	BF	REA	API	TI
11	1.3	78	109	.19	6	26	65	16	12.8	33.9	-.26	.36	-.034	.85	141	83
						25	25	30						20	25	25

REG#3758280 • BD: 3/20/20

**Hetero Black Homo Polled
3/4 SM 1/4 AN**

W/C Bankroll 811D
W/C Fort Knox 609F
K-Ler Dolly's Queen 609D
CCR Cowboy Cut 5048Z
ES C49
EST51

Adj BW	Adj WW	Adj YW
93	597	1101
Adj Scrotal	WDA	134 Day Gain
36.9	3.12	3.17

Quite a pedigree here, you have the \$180,000 bull, Fort Knox on the top and Cowboy Cut X T51 on the bottom. Should be a nice maternal package.

28 ES HF81

CE SCORE



CE	BW	WW	YW	ADG	MCE	Milk	MWW	Stay	DOC	CW	YG	Marb	BF	REA	API	TI
12	2.6	97	154	.36	7	31	79	20	14.8	35.6	-.21	.16	-.035	.71	138	86
		2	2	3		2	1	4	15						30	20

REG#3758190 • BD: 2/14/20 • Homo Black Baldy Homo Polled 3/4 SM 1/4 AN

TJ Main Event 503B
TJ Teardrop 783F
TJ Ms. 38W
3C Pasque 4331B B
ES F81
ES B8

Adj BW	Adj WW	Adj YW
101	668	1187
Adj Scrotal	WDA	134 Day Gain
34.0	3.09	3.28



28

Pretty sure a few hands will go up in the air when he appears on the tv screens. First off, he's pretty darn good, I marked him high on my list. Second, if you're looking for a direct Teardrop son, they are going to be hard to find as TJ Teardrop is no longer with us and semen is hard to find. This guy is out of a 1st calf heifer so not much of a track record there. Other than she's off to a pretty good start, but his granddam has a WW ratio of 109 on 5 calves.

*TJ Teardrop
Sons*

29 ES HF2

CE SCORE



CE	BW	WW	YW	ADG	MCE	Milk	MWW	Stay	DOC	CW	YG	Marb	BF	REA	API	TI
14	.8	87	130	.27	6	29	72	15	10.7	44.4	-.50	.31	-.067	1.49	138	86
	15	30	15	20	25	15	10			10	15	15		1	30	15

REG#3758343 • BD: 2/19/20 • Homo Black Baldy Homo Polled Purebred

TJ Main Event 503B
TJ Teardrop 783F
TJ Ms. 38W
Hook's Beacon 56B
ES F2
ES D93

Adj BW	Adj WW	Adj YW
92	620	1176
Adj Scrotal	WDA	134 Day Gain
31.8	3.05	3.51



29

I'm only 1/2 way with footnotes, but as of this point, he has the best, most well-balanced genetic profile I have come across. No doubt a lot of that has to do with his good uddered Beacon mom. His sire, Teardrop, just produced the high selling bull at Triangle J, commanding \$50,000. This baldy son is pretty easy on the eyes.

30 ES HF136

CE SCORE



CE	BW	WW	YW	ADG	MCE	Milk	MWW	Stay	DOC	CW	YG	Marb	BF	REA	API	TI
17	-1.8	72	109	.23	7	29	65	16	10.6	38.3	-.07	.26	-.029	.37	137	77
10	15					10	25	35		35					35	

REG#3758220 • BD: 2/18/20 • **Hetero Black Homo Polled 5/8 SM 3/8 AN**

TJ Main Event 503B
 TJ Teardrop 783F
 TJ Ms. 38W
 B C Lookout 7024
 ES F136
 Frankes/MPC Night Dreams

Adj BW	Adj WW	Adj YW
87	624	1219
Adj Scrotal	WDA	134 Day Gain
34.7	3.20	3.77

A Teardrop son that is heifer safe as validated by his ACE logo with the Right Choice program. He's got the EPDs and CE look, small head and extension to reinforce it. He also brings a bit more to the table than just being a heifer bull.



TJ Teardrop 783F, Sire
to Lot 28-31

**30****31 ES HF140**

CE SCORE



CE	BW	WW	YW	ADG	MCE	Milk	MWW	Stay	DOC	CW	YG	Marb	BF	REA	API	TI
11	.6	88	122	.21	3	30	74	16	10.7	48.6	-.34	.12	-.078	.95	123	81
		10	35			10	4			10	20		15	10		35

REG#3758223 • BD: 2/7/20 • **Homo Black Homo Polled 3/4 SM 1/4 AN**

TJ Main Event 503B
 TJ Teardrop 783F
 TJ Ms. 38W
 TKCC Carver 65C
 ES F140
 ES B101

Adj BW	Adj WW	Adj YW
71	576	1133
Adj Scrotal	WDA	134 Day Gain
33.2	3.12	3.51

Twin. Last summer Rocky Forseth stopped by and wanted to see the Teardrop calves. After bouncing around the pastures for an hour or two and we came to the conclusion there just wasn't a bad one. He looks to be very versatile, I mainly used him on heifers and got along just fine and now most of them worked there way into the picture pen. Holy crap....pay attention here on udder scoring I only gave one 10 score out last year and it was his mother! You want phenotype, check out his dam's full sister, Lot 129.



ES G164, Full Sister to Dam
of Lot 31

**31**

32 ES HB67

CE SCORE

★★★

CE	BW	WW	YW	ADG	MCE	Milk	MWW	Stay	DOC	CW	YG	Marb	BF	REA	API	TI
12	.5	87	135	.30	3	27	71	16	14.5	42.7	-.44	.03	-.088	1.12	124	80
		15	15	25		15	10	30	20	20	5		10	2		

REG#3758341 • BD: 3/14/20 • Homo Black Hetero Polled 5/8 SM 3/8 AN

Mr. NLC Upgrade U8676
TJ Main Event 503B
TJ Miss New Day U14
Remington Lock N Load 54U
ES B67
ESU 21

Adj BW	Adj WW	Adj YW
91	690	1271
Adj Scrotal	WDA	134 Day Gain
39.6	3.60	3.66



32

TJ Main Event Sons

Whether it's going by with the feed wagon or bedding bulls this guy gets our attention and has really grown on us the last couple of months. So complete from top to bottom and end to end. These are probably the most consistent set of Main Event sons we have offered yet. The fire got quite a little hotter when I looked up the history on his dam, every year she has a good one, not to mention a full sister selling in the bred division Lot 145.



ES EB67, Full Brother to Lot 32



ES D10, Maternal Sister to Lot 32



ES G120, Full Sister to Lot 32, Sells as Lot 145



TJ Main Event 503B, Sire to Lots 32-35

33 ES HF73

CE SCORE

★★★

CE	BW	WW	YW	ADG	MCE	Milk	MWW	Stay	DOC	CW	YG	Marb	BF	REA	API	TI
11	-.4	69	114	.28	6	26	61	15	10.9	47.7	-.27	.31	-.052	.91	125	74
	35			35		20				10			35	15		

REG#3758351 • BD: 3/25/20
Homo Black Homo Polled
1/2 SM 1/2 AN

Mr. NLC Upgrade U8676
TJ Main Event 503B
TJ Miss New Day U14
Remington Lock N Load 54U
ES F73
KA Barbaramere 4201

Adj BW	Adj WW	Adj YW
89	637	1136
Adj Scrotal	WDA	134 Day Gain
34.2	3.07	3.17

He's got the look to be a trouble-free genetic package. His dam offers a little different twist, she is the product of a package of embryos we bought from Dustin Carter out of one of his top Angus cows. His dam, F73, was noted for her good udder design last spring.

34 ES HZ4

CE SCORE



CE	BW	WW	YW	ADG	MCE	Milk	MWW	Stay	DOC	CW	YG	Marb	BF	REA	API	TI
7	2.5	92	142	.31	3	27	73	13	10.9	43.8	-.32	.06	-.071	.88	110	79
		5	10	20		15	4			20	25		15	15		

REG#3758379 • BD: 3/15/20 • Hetero Black Homo Polled 1/2 SM 1/2 AN

Mr. NLC Upgrade U8676
TJ Main Event 503B
TJ Miss New Day U14
Connealy Final Product
ES Z4
ES X56

Adj BW	Adj WW	Adj YW
91	670	1210
Adj Scrotal	WDA	134 Day Gain
36.7	3.45	3.40



This stud gets us a little jacked up. He's a Main Event that checks all the boxes. I went around the pen a couple times with this guy writing my footnotes. I could go off in detail, but he's just flat cool. Turn the page and his dam only reinforces why this is a good bull, she has a WW ratio of 108 on 7 calves.



ES EZ4, Maternal Brother to Lot 34



ES D41, Maternal Sister to Lot 34

35 ES HF113

CE SCORE



CE	BW	WW	YW	ADG	MCE	Milk	MWW	Stay	DOC	CW	YG	Marb	BF	REA	API	TI
16	-1.8	81	126	.28	7	28	69	15	10.6	41.6	-.22	.24	-.052	.71	139	83
15	15	30	30	35		10	15			25			35	30	25	

REG#3758296 • BD: 3/2/20
Homo Black Homo Polled
1/2 SM 1/2 AN

All indications here are calving ease prospect, he's structurally sound, with a calving ease look. Smaller head, lighter boned, combined with a 70 lb birth weight and CE & BW EPDs to validate. His dam is a super uddered natural calf out of a cow we call "Marty", a cowboy Cut daughter purchased from Cow Camp. Talk about an easy keeping female.

Mr. NLC Upgrade U8676
TJ Main Event 503B
TJ Miss New Day U14
ES DZ3
ES/All Beef F113
CCR Ms. 0056 Cowboy 6096D

Adj BW	Adj WW	Adj YW
75	654	1129
Adj Scrotal	WDA	134 Day Gain
34.0	2.98	3.02

36 ES HD31

CE SCORE



CE	BW	WW	YW	ADG	MCE	Milk	MWW	Stay	DOC	CW	YG	Marb	BF	REA	API	TI
15	-1.0	84	124	.25	5	21	63	19	11.2	42.4	-.44	.29	-.097	1.06	156	89
10	10	25	30					20		10		15		15	10	10

REG#3758364 • BD: 3/28/20
Homo Black Hetero Polled
Purebred

If calving ease is a concern, take a look here. I wanted to give him 4 stars for calving ease, but he doesn't have the ACE logo, that means I just can't guarantee calving ease especially when carrying an ATM logo. His dam has had three calves with a ratio of 88, which is very good and his CE & BW EPDs are on the top 10% of the breed. He also exhibits some good carcass numbers being in the top 15% for marbling and ribeye.

TJ Main Event 503B
CDI Innovator 325D
CDI Ms. Shear Force 49U
W/C Bullseye 3046A
ES D31
ES Z80

Adj BW	Adj WW	Adj YW
83	697	1135
Adj Scrotal	WDA	134 Day Gain
36.9	3.17	2.76

37 ES HC108

CE	BW	WW	YW	ADG	MCE	Milk	MWW	Stay	DOC	CW	YG	Marb	BF	REA	API	TI
8	4.5	95	152	.36	1	19	66	20	8.6	58.2	-.42	-.04	-.087	1.27	118	76
		3	3	3			20	4		2	10		10	1		

REG#3758230 • BD: 3/16/20 • Homo Black Homo Polled 3/4 SM 1/4 AN

TJ Main Event 503B
 CDI Innovator 325D
 CDI Ms. Shear Force 49U
 Remington Lock N Load 54U
 ES C108
 EST51

Adj BW	Adj WW	Adj YW
108	589	1230
Adj Scrotal	WDA	134 Day Gain
35.7	3.46	4.03



Take a close look at the rear leg structure on this guy, ideal in our mind. His sire, CDI Innovator, is a neat success story born and raised in North Dakota. Purchased by JS Simmentals and Wayward Hill Farms, taken to Denver and ends up being NWSS Grand Champion % bull that year. A little secret, Chris almost didn't even show him. Check out his growth EPDs, top 3% and 2% for WW & YW, top 1% for REA and most important, if retaining females he's in the top 5% for stayability. Note the consistency of all three full and 1/2 brothers in the pictures, I scored each one very high each year. Gotta love the consistency.



ES EC108, Maternal Brother to Lot 37

38 ES HF45

CE	BW	WW	YW	ADG	MCE	Milk	MWW	Stay	DOC	CW	YG	Marb	BF	REA	API	TI
13	.3	82	126	.27	7	24	65	14	14.6	32.1	-.48	.44	-.082	1.15	141	87
35		25	25				25		20		2	25	10	2	25	15

REG#3758268 • BD: 2/27/20 • Homo Black Homo Polled 5/8 SM 3/8 AN

Hoover Dam
 CCR Boulder 1339A
 CCR Ms. L Taylor 1339Y
 CDI Innovator 325D
 ES F45
 ES B28

Adj BW	Adj WW	Adj YW
82	669	1259
Adj Scrotal	WDA	134 Day Gain
38.7	3.30	3.73



I hope you all will take the time to look up the boulder sons on sale day, they are very uniform in their type and kind, if you like one, you'll like them all. They are just good common sense beef bulls. Acceptable calving ease then above average growth and carcass traits.

CCR Boulder Sons

39 ES HF144

CE SCORE



CE	BW	WW	YW	ADG	MCE	Milk	MWW	Stay	DOC	CW	YG	Marb	BF	REA	API	TI
9	1.2	85	126	.26	4	24	67	20	15.2	30.5	-.41	.59	-.085	.89	154	90
		20	30			35	20	10	15		10	10	10	15	10	10

REG#3758213 • BD: 2/15/20 • **Homo Black Homo Polled 3/4 SM 1/4 AN**

Hoover Dam
CCR Boulder 1339A
CCR Ms. L Taylor 1339Y
CCR Cowboy Cut 5048Z
ES F144
ES A110

Adj BW	Adj WW	Adj YW
96	647	1196
Adj Scrotal	WDA	134 Day Gain
39.6	3.10	3.47



39

Once I sat down and pulled up the rest of his pedigree it's easy to see why I like this bull so well in the lot. His good uddered dam is on our radar to possibly be the next generation to carry on the A110 line of genetics. I'd say the F144 cow is off to a great start as this is her 1st calf. Genetically this Boulder son brings a lot to the table, hitting in the top percentiles within the Simmental breed in a lot of categories across his EPD profile.



ES A110, Grandam to Lot 39 & 40

40 ES HF145

CE SCORE



CE	BW	WW	YW	ADG	MCE	Milk	MWW	Stay	DOC	CW	YG	Marb	BF	REA	API	TI
15	-1.5	70	99	.18	8	23	58	20	8.5	17.3	-.41	.41	-.078	.79	150	80
		25	20			35		4			10	30	15	25	15	

REG#3758212 • BD: 2/17/20 • **Homo Black Homo Polled 3/4 SM 1/4 AN**

Hoover Dam
CCR Boulder 1339A
CCR Ms. L Taylor 1339Y
Welshs Dew It Right 067T
ES F145
ES A110

Adj BW	Adj WW	Adj YW
83	637	1216
Adj Scrotal	WDA	134 Day Gain
36.2	3.15	3.66



38

The Boulder sire group is one of my favorites this year. It doesn't hurt that they are out of awfully good cows. If you're really quiet, maybe you can sneak this bull out at a bargain price, if so, good for you. But I'm not going to make it easy as his nice uddered mother is a full sister to ES RIGHT TIME, that's where he gets his good foot structure. Great cattle evaluators have stated Right Time may be one of the best footed bulls in the breed. Looks to me, it's going to be a battle between the F144 & F145 heifers as the heir to replace the A110 cow someday. He is a legitimate calving ease bull and carries the ACE logo.

Sons of TJ Heisman 388F

41 ES HF27



CE SCORE

★★★★

CE	BW	WW	YW	ADG	MCE	Milk	MWW	Stay	DOC	CW	YG	Marb	BF	REA	API	TI
13	-4	75	120	.28	8	26	64	20	13.3	45.2	-.38	.51	-.063	1.15	164	89
25	15		35	20	20	30		10	25	10		3		10	3	10

REG#3758202 • BD: 2/19/20 • Homo Black Homo Polled Purebred

Koch Big Timber 685D
TJ Heisman 388F
TJ 67D
Hook's Beacon 56B
ES F27
ES D18

Adj BW	Adj WW	Adj YW
82	595	1140
Adj Scrotal	WDA	134 Day Gain
34.3	2.93	3.43



A very attractive Heisman son out of a 1st calf Beacon daughter. Paul says Heisman X Beacon, that's where it's at. If you follow the pedigree a couple generations further, you have United & Lock N Load, powerful stuff. EPD indicators would show above average calving ease and excellent carcass traits.



ES A110, Grandam to Lot 42

42 ES HF33



CE SCORE

★★★★

CE	BW	WW	YW	ADG	MCE	Milk	MWW	Stay	DOC	CW	YG	Marb	BF	REA	API	TI
13	.8	91	132	.26	6	29	74	24	13.9	32.7	-.16	.41	-.038	.51	158	89
		10	20			10	3	1	25			30			10	10

REG#3758339 • BD: 3/1/20
Homo Black Homo Polled
3/4 SM 1/4 AN

I like the family tree here. His dam is a Main Event out of the A110 donor. He's a moderate bull that has some calving ease qualities about him yet had the ability to be in the top 10 for gain since weaning. We also believe he would be a great choice for keeping some replacement females out of.

Koch Big Timber 685D
TJ Heisman 388F
TJ 67D
TJ Main Event 503B
ES F33
ES A110

Adj BW	Adj WW	Adj YW
83	621	1259
Adj Scrotal	WDA	134 Day Gain
36.9	3.30	4.03

43 ES HF98



CE SCORE

★★★

CE	BW	WW	YW	ADG	MCE	Milk	MWW	Stay	DOC	CW	YG	Marb	BF	REA	API	TI
6	3.1	95	146	.32	2	31	78	15	12.4	46.7	-.43	.18	-.090	1.11	120	84
		3	4	10		10	2		35	5		35		10		20

REG#3758198 • BD: 2/13/20
Homo Black Hetero Polled
Purebred

He's going to be the larger frame of the Heisman sons. You could translate that to say there's room to grow as indicated by his 116 WW ratio and WW & YW EPDs in the top 3% and 4% of the breed. We truly believe the Heisman daughters will make excellent mamma cows.

Koch Big Timber 685D
TJ Heisman 388F
TJ 67D
TJ Main Event 503B
ES F98
ES A25

Adj BW	Adj WW	Adj YW
98	744	1204
Adj Scrotal	WDA	134 Day Gain
33.5	3.17	2.91

44 ES HF14



CE SCORE

★★★★

CE	BW	WW	YW	ADG	MCE	Milk	MWW	Stay	DOC	CW	YG	Marb	BF	REA	API	TI
9	.6	87	133	.29	6	25	68	21	5.5	39.6	-.37	.18	-.056	1.09	146	86
		30	15	15		20	4		15		35		15	15	15	15

REG#3758334 • BD: 2/6/20
Homo Black Homo Polled
Purebred

A PB Simmy that looks more like an Angus, you can read into that however you want. Nice maternal package, his dam and grandam both scored well on udder quality. Out of a 1st calf heifer with ratios of 106 & 103 for WW & YW.

Koch Big Timber 685D
TJ Heisman 388F
TJ 67D
CCR Santa Fe 9349Z
ES F14
ES D107

Adj BW	Adj WW	Adj YW
88	680	1224
Adj Scrotal	WDA	134 Day Gain
34.1	3.16	3.43

45 ES HX27

CE SCORE



CE	BW	WW	YW	ADG	MCE	Milk	MWW	Stay	DOC	CW	YG	Marb	BF	REA	API	TI
10	1.4	85	127	.26	4	18	61	20	10.1	31.3	-.27	.24	-.047	.75	134	80
		15	25					10						35		

CCR Wide Range 9005A
BCLR Cash Flow C820
BCLR Miss Monica U820
S A V 8180 Traveler 004
ES X27
ESP63

Adj BW	Adj WW	Adj YW
94	698	1287
Adj Scrotal	WDA	134 Day Gain
33.1	3.65	3.69

REG#3758312 • BD: 3/23/20 • **Homo Black Homo Polled 3/4 SM 1/4 AN**

Two years ago we had several Cash Flow sons and I remember how structurally sound they were as a sire group, that's why we went back to him, those same good characteristics hold true in this Cash Flow son. This big bodied individual has WW & YW ratios of 109 & 108 and was a top 10 bull for WDA. His dam, an 11 year old 004 daughter, represents a sire group we have always admired.



45

46 ES HZ30

CE SCORE



CE	BW	WW	YW	ADG	MCE	Milk	MWW	Stay	DOC	CW	YG	Marb	BF	REA	API	TI
6	2.7	86	136	.31	1	13	56	18	14.1	28.1	-.51	.23	-.069	1.31	136	83
		20	10	10				25	15		15	25		2	30	25

CCR Wide Range 9005A
BCLR Cash Flow C820
BCLR Miss Monica U820
Remington Lock N Load 54U
ES Z30
ES W43

Adj BW	Adj WW	Adj YW
108	659	1141
Adj Scrotal	WDA	134 Day Gain
33.0	3.25	3.02

REG#3758209 • BD: 3/22/20
Homo Black Homo Polled
Purebred

Another Cash Flow son like many others, solid good cattle that should just get the job done. He even showed up with 2 markers on the Right choice program, G+ & ATM.

47 ES HA33

CE SCORE



CE	BW	WW	YW	ADG	MCE	Milk	MWW	Stay	DOC	CW	YG	Marb	BF	REA	API	TI
17	-1.6	81	119	.24	9	27	67	15	11.9	24.6	-.42	.12	-.079	.91	141	84
2	5	35			10	25	25								25	20

W/C Executive Order 8543B
CDI Legendary 364D
Hooks Mika 141M
Remington Lock N Load 54U
ES A33
ES W28

Adj BW	Adj WW	Adj YW
77	675	1247
Adj Scrotal	WDA	134 Day Gain
36.7	3.55	3.58

REG#3758200 • BD: 4/4/20
Hetero Black Homo Polled
Purebred

Here's a neat bull that when you first analyze him you may lean towards a calving ease prospect, then look a little closer and he sorta grows on ya. He's sound, fairly thick with a bit more rib shape than what first meets the eye. Then look at his curve bending ratios, BW 87 and WW & YW 105. Keep in mind ASA changed their ratios on BW to be more industry standard and lower is now better.

48 ES HD45

CE SCORE



CE	BW	WW	YW	ADG	MCE	Milk	MWW	Stay	DOC	CW	YG	Marb	BF	REA	API	TI
16	-2.3	74	106	.20	9	23	60	18	11.5	28.4	-.27	.28	-.047	.71	151	84
5	3				10			30				20			10	20

W/C Executive Order 8543B
CDI Legendary 364D
Hooks Mika 141M
CCR Spartan 9124A
ES D45
ES A112

Adj BW	Adj WW	Adj YW
79	606	1115
Adj Scrotal	WDA	134 Day Gain
35.5	3.11	3.21

REG#3758352 • BD: 3/21/20
Hetero Black Homo Polled
Purebred

This will be a legitimate calving ease bull. The numbers indicate it and his ACE accreditation through the Right Choice program verifies it. His dam has had three calves with a BW ratio of 91. His sire, Legendary, is also a slam dunk heifer bull.

49 ES HF58

CE SCORE



CE	BW	WW	YW	ADG	MCE	Milk	MWW	Stay	DOC	CW	YG	Marb	BF	REA	API	TI
18	-2.2	87	140	.33	11	28	71	12	13.9	46.0	-.34	.25	-.079	.93	141	89
4	15	15	10	10	5	15	10		25	15	20		15	10	25	10

REG#3758375 • BD: 2/19/20 • Hetero Black Homo Polled 3/4 SM 1/4 AN

W/C Executive Order 8543B
 CDI Legendary 364D
 Hooks Mika 141M
 Prairie Pride Next Step 2036
 ES F58
 AJE/HS/MBCC Hopes Dalila

Adj BW	Adj WW	Adj YW
77	669	1282
Adj Scrotal	WDA	134 Day Gain
34.3	3.37	3.88



Note the EPD profile on this guy! He's in the top 20% of the breed in 13 different categories. He's a larger framed, deep bodied bull whose numbers indicate calving ease yet he's a G+/ATM on the Right Choice program. May read into it, he just does a lot of things right. His sire, Legendary, is a slam dunk heifer bull.

49

**50 ES HC26**

CE SCORE



CE	BW	WW	YW	ADG	MCE	Milk	MWW	Stay	DOC	CW	YG	Marb	BF	REA	API	TI
1	7.1	101	158	.36	0	17	68	15	9.5	65.1	-.41	-.07	-.102	1.20	105	78
		1	1	2			25			1			20	4		

REG#3758281
BD: 3/16/20Homo Black
Homo Polled
Purebred

OLF Otis Y43
 LCDR Witness 541C
 WS Mother Lode W21
 Gibbs 0689X Crimson Tide
 ES C26
 ESU74

Adj BW	Adj WW	Adj YW
114	591	1257
Adj Scrotal	WDA	134 Day Gain
34.7	3.52	4.18

I know you're going to discount him for his birth weight and if that's a concern, yes, there are other bulls. If I thought there would be a problem, he wouldn't be in the sale. He has a nice, smaller head and just average bone mass. If you can get past that, he's awfully good, one of our favorites. He has been the #2 gaining bull since weaning and it's a big contemporary group. Find him, you'll like what you see, and we have given his dam a 9 on udder score each of the past four years.

50

51 ES HC109

CE SCORE



CE	BW	WW	YW	ADG	MCE	Milk	MWW	Stay	DOC	CW	YG	Marb	BF	REA	API	TI
8	1.3	81	121	.25	4	21	62	20	10.7	37.9	-.45	-.06	-.083	1.14	125	75
		30	35					10		20				10		

REG#3758232 • BD: 3/23/20
Hetero Black Hetero Polled
Purebred

OLF Otis Y43
 LCDR Witness 541C
 WS Mother Lode W21
 Remington Lock N Load 54U
 ES C109
 EST51

Adj BW	Adj WW	Adj YW
87	578	1161
Adj Scrotal	WDA	134 Day Gain
37.6	3.28	3.66

His sire, Witness, is known for his meat and muscle. He's a big ribeye bull that looks to transmit that into his progeny. HC109's G+ score on the RightMate program would indicate a bull that should move your program forward in many traits, not single trait selection.

52 ES HF85

CE SCORE



CE	BW	WW	YW	ADG	MCE	Milk	MWW	Stay	DOC	CW	YG	Marb	BF	REA	API	TI
11	1.8	90	140	.32	9	24	69	19	11.4	35.5	-.38	.46	-.052	1.12	151	89
		10	10	15	20		15	10			15	25	35	2	15	10

REG#3758361 • BD: 3/17/20 • **Hetero Black Homo Polled 3/4 SM 1/4 AR**

More times than not, the best things that happen around here are by accident. This was suppose to be an All Aboard, come to find out Beacon and All Aboard's cane codes are very similar, don't put them in the same cannister in the semen tank. Gotta admit these two Beacons out of red cows may be the best Beacons we have ever raised. Kind of enhances the EPD profile also. Gotta like his performance ratioing 109 for WW & 104 for YW.



Hooks Shear Force 38K
Hook's Beacon 56B
Hooks Zafirah 41Z
TNT Red Eye A212
ES F85
EIR Z204

Adj BW	Adj WW	Adj YW
99	698	1239
Adj Scrotal	WDA	134 Day Gain
37.8	3.34	3.43

53 ES HB209

CE SCORE



CE	BW	WW	YW	ADG	MCE	Milk	MWW	Stay	DOC	CW	YG	Marb	BF	REA	API	TI
18	-4.4	64	106	.26	12	30	62	19	14.2	23.5	-.24	.61	.004	.97	168	86
4	2				2	10		10	20		10			10	3	15

REG#3775642 • BD: 3/16/20 • **Hetero Black Homo Polled 1/2 SM 1/2 AR**

This is my second screw up... if I didn't sleep with the boss, Cathy would've fired me a long time ago!! No, I did not plan on AI'ing a Red Angus cow to the homo black bull Beacon, but yours truly pulled out the wrong straw of semen from the tank and the cow was long gone before realized and of course, she settled! Well for what it's worth, he may be one of the best Beacon's we have ever raised, being the #7 WDA bull in the offering. Was the #1 bull for WW & YW in his contemporary group, I will confess, it was a small contemporary!



EIR GB209, Maternal Brother to Lot 53



Hooks Shear Force 38K
Hook's Beacon 56B
Hooks Zafirah 41Z
HXC Conquest 4405P
EIR B209
EIR T202

Adj BW	Adj WW	Adj YW
86	744	1297
Adj Scrotal	WDA	134 Day Gain
36.7	3.68	3.51

54 ES HE34

CE SCORE

★★★★★

CE	BW	WW	YW	ADG	MCE	Milk	MWW	Stay	DOC	CW	YG	Marb	BF	REA	API	TI
18	-3.3	74	118	.28	10	32	69	17	15.2	37.8	-.28	.29	-.038	.93	149	83
3	5			35	15	2	10	25	15	35	35			10	15	25

REG#3758242 • BD: 3/13/20 • Homo Black Homo Polled 1/2 SM 1/2 AN

G A R Sure Fire
EGL Cinched 116F
TJ 22X
TJ Main Event 503B
ES E34
ASR Ms. Super Baldy X0100

Adj BW	Adj WW	Adj YW
75	707	1250
Adj Scrotal	WDA	134 Day Gain
37.6	3.43	3.43



This guy is absolutely as good as his picture. He's one of those bulls you see in a distance and you have to walk over to see who he is. For a 4 star calving ease, check the rest of the story, WW & YW ratios of 110 and 105. I would anticipate the females to be awesome. We gave his mother an udder score of 9 the last two years. I'll also say if you're looking for a 7-frame bull, it's not him. His sire is new genetics, we just used a few units of semen and have 1 bull & 1 heifer. Cinched is a full brother to the highly promoted bull, Firesteel.

**55 ES HB101**

CE SCORE

★★★★

CE	BW	WW	YW	ADG	MCE	Milk	MWW	Stay	DOC	CW	YG	Marb	BF	REA	API	TI
9	2.6	87	120	.21	4	21	64	16	17.0	39.4	-.14	.03	-.027	.61	110	73
		15					30		4	30						

REG#3758311
BD: 3/15/20Homo Black
Homo Polled
1/2 SM 1/2 AN

CCR Spartan 9124A
CCR Wichita 4069D
CCR Ms. 707 Cowboy 4069B
B C Lookout 7024
ES B101
Frankes/MPC Night Dreams

Adj BW	Adj WW	Adj YW
103	766	1192
Adj Scrotal	WDA	134 Day Gain
31.7	3.42	2.69



ES GB101-1, Maternal Brother to Lot 55

This guy has been one folks have been picking out all summer and early fall. Has a good foot and travels well. He's a natural calf out of B101 or "Minnie" as known around here. She was a fall heifer that Adam had a lot of fun showing a few years back. His sire, Wichita, is a bull we own with Cow Camp in Kansas and use very successfully on heifers. A maternal brother was a sale highlight last year.

56 ES HT51-2

CE SCORE

★★★★

CE	BW	WW	YW	ADG	MCE	Milk	MWW	Stay	DOC	CW	YG	Marb	BF	REA	API	TI
14	.7	90	132	.26	6	25	70	23	12.5	30.0	-.27	.33	-.052	.72	155	87
30		10	20			30	10	1						35	10	15

REG#3758278 • BD: 4/4/20
Homo Black Homo Polled
3/4 SM 1/4 AN

Triple C Singletary S3H
CCR Cowboy Cut 5048Z
CCR Ms. 4045 Time 7322T
DCC New Look 101
EST51
ESP85

Adj BW	Adj WW	Adj YW
76	752	1159
Adj Scrotal	WDA	134 Day Gain
37.7	3.28	2.57

We have been selling direct T51 sons in our sales for the past 10 years now, we've bred or flushed her a lot of different directions resulting in 50+ calves. She's 14 years old and going to calve on schedule again but the really impressive part is we still gave her a 9 on udder structure last spring. This is an ET calf to some full brothers that sold 4 years ago. I think we are getting down on inventory on T51 embryos though.

57 ES HZ74

CE SCORE



CE	BW	WW	YW	ADG	MCE	Milk	MWW	Stay	DOC	CW	YG	Marb	BF	REA	API	TI
13	.7	94	144	.31	8	25	72	17	12.5	35.1	-.35	.36	-.066	.92	146	91
		4	10	20		30	10	25			20		25	10	20	10

REG#3744882 • BD: 3/27/20 • Hetero Black Homo Polled 3/4 SM 1/4 AN

His sire, Full Figures, was one of my favorites a couple years ago in the Bred for Balance sale, high performing yet super on the move. This guy has made more than one person stop and spin him around for another look. Has a striking side profile but is even more impressive from the rear. Definitely the front pasture kind that will make the neighbors stop and stare.



57

TJ Diplomat 294D
Hook's Full Figures 11F
Hook's Docila 23D
TNT Axis X307
ES Z74
ES W31

Adj BW	Adj WW	Adj YW
85	728	1245
Adj Scrotal	WDA	134 Day Gain
37.8	3.54	3.25

58 ES HF149

CE SCORE



CE	BW	WW	YW	ADG	MCE	Milk	MWW	Stay	DOC	CW	YG	Marb	BF	REA	API	TI
11	.1	96	156	.37	4	21	69	15	18.5	57.5	-.08	.12	-.013	.77	124	84
		2	2	2			15		2	2				30		25

REG#3758217
BD: 2/15/20Homo Black
Homo Polled
1/2 SM 1/2 AN

High Point Ring Of Fire 5071
JK High Point 745
J K Blackbird 408
TKCC Carver 65C
ES F149
ES A117

Adj BW	Adj WW	Adj YW
95	683	1324
Adj Scrotal	WDA	134 Day Gain
36.1	3.46	4.07

If you like the JK High Point sons as a sire group in JK Angus's bull pens (which I do), here is one with a little Simmy added to the mix. Do a little homework here, his dam is a full sister to Lots 3 & 4, A117 sons, out of the A117 donor in the front of the catalog. So not just any Sim/Angus bull, but one that's royally bred top and bottom. He should add payweight to calves, more frame and stretch, big growth EPDs and is the #6 gaining and #3 YW Simmental bull in the sale. I would expect his daughters should head to the replacement pen.



58

59 ES HD44

CE SCORE



CE	BW	WW	YW	ADG	MCE	Milk	MWW	Stay	DOC	CW	YG	Marb	BF	REA	API	TI
13	.7	76	128	.32	4	24	61	16	12.2	36.3	-.29	.02	-.064	.75	130	76
20	30		20	10						25						

REG#3758313
BD: 3/15/20Homo Black
Homo Polled
Purebred

Remington Lock N Load 54U
ES Loaded BU56-1
ESU56
CCR Drover 9094A
ES D44
ES A40

Adj BW	Adj WW	Adj YW
81	674	1249
Adj Scrotal	WDA	134 Day Gain
37.7	3.45	3.62

This guy has the parts and pieces of a good bull. Has a lot of rib-shape, some flex in his foot and comes highly recommended for replacement females. It's a combination that his dam got a very good udder score last spring and the ES Loaded daughters have always been a highlight in the heifer division.



59

60 ES H315A

CE SCORE

★★★★

CE	BW	WW	YW	ADG	MCE	Milk	MWW	Stay	DOC	CW	YG	Marb	BF	REA	API	TI
13	-.5	82	125	.26	6	24	65	16	7.6	28.7	-.08	.38	-.008	.45	139	84
	35	25	30				25					35			30	25

REG#3758393 • BD: 3/19/20 • **Homo Black Hetero Polled 5/8 SM 3/8 AN**

I marked this bull pretty good in the lot, then when I sat down to do footnotes and saw who his full brother was last year, I got really excited. His dam is a big powerful Chamberlain daughter that has a WW ratio of 103 on six calves. I picture this guy doing a heck of a job on a set of commercial cows.

CCR Cowboy Cut 5048Z
 ES Epic EB94
 ES B94
 R&R Chamberlain X744
 Miss Werning 315A
 Miss Werning 9715T

Adj BW	Adj WW	Adj YW
80	610	1150
Adj Scrotal	WDA	134 Day Gain
39.4	3.27	3.40



ES G315A, Full Brother to Lot 60



60



61

61 ES HB2

CE SCORE

★

CE	BW	WW	YW	ADG	MCE	Milk	MWW	Stay	DOC	CW	YG	Marb	BF	REA	API	TI
8	5.1	88	140	.32	0	20	65	14	13.5	54.2	-.22	.05	-.057	.81	107	73
		10	10	15			25		30	4			35	25		

REG#3758346
BD: 3/14/20

Hetero Black
Baldy Hetero
Polled 1/2 SM
1/2 AN

B C Lookout 7024
 SHER The Wood 83F
 Sherwood Rosebud 83U
 Remington Lock N Load 54U
 ES B2
 EST78

Adj BW	Adj WW	Adj YW
105	669	1275
Adj Scrotal	WDA	134 Day Gain
37.6	3.63	3.84

Long sided, nice profiling, blaze-face son of The Wood, an Angus bull that doesn't look like your typical Angus with phenotype to burn. We would anticipate this guy to do an awesome job on some smaller type British based cows, by adding pay weight to his calves. He ratioed 104 for WW and was in the top 10% for WDA, for a YW ratio of 107.

62 ES HD112

CE SCORE



CE	BW	WW	YW	ADG	MCE	Milk	MWW	Stay	DOC	CW	YG	Marb	BF	REA	API	TI
8	3.2	88	133	.28	2	20	64	16	9.6	34.5	-.42	.03	-.092	.91	112	75
		10	15	35			30	35			10		4	15		

REG#3758250 • BD: 4/16/20 • Red Homo Polled 3/4 SM 1/8 AN 1/8 AR

"Really Cool" is the best way to describe this young mid-April born bull. The phenotype this guy exhibits traces back through multiple generations both on the top and bottom side of his pedigree. His granddam has a WW ratio of 108 on five calves. His full brother last year had the same striking profile as this guy. His ATM status would indicate his growth potential that should transmit into his calves.



ES GD112, Full Brother to Lot 62

Red Bulls

62

Remington Lock N Load 54U

ES EX75-1

ES X75

ES AU56-1

ES D112

ES Z72

Adj BW	Adj WW	Adj YW
87	626	1194
Adj Scrotal	WDA	134 Day Gain
34.4	3.42	3.58

63 ES HD12

CE SCORE



CE	BW	WW	YW	ADG	MCE	Milk	MWW	Stay	DOC	CW	YG	Marb	BF	REA	API	TI
12	1.1	88	136	.30	4	24	68	16	6.9	35.0	-.55	.03	-.100	1.28	132	83
35		15	10	15			25			30	4			2		25

REG#3758271
BD: 3/25/20

Remington Lock N Load 54U

ES EX75-1

ES X75

Hook's Yukon 80Y

ES D12

ES B44

Red
Homo Polled
Purebred

Adj BW	Adj WW	Adj YW
90	680	1226
Adj Scrotal	WDA	134 Day Gain
35.2	3.43	3.43

Common sense cattle come to mind here, I stood in the lot and tried to pick him apart but he just kept getting better as I just couldn't find a major flaw. When I sat down to put the footnote together, I realized why he grew on me and where it comes from. His granddam is B44, the mother of our high selling red bull last year and where his dam's beautiful udder came from.



63

ES GB44, Son of Grandam to Lot 63

64 ES HE57

CE SCORE



CE	BW	WW	YW	ADG	MCE	Milk	MWW	Stay	DOC	CW	YG	Marb	BF	REA	API	TI
6	4.1	90	133	.27	0	18	63	18	10.8	26.3	-.51	-.06	-.067	1.28	118	76
		10	15	25				30			15			2		

REG#3758274
BD: 3/16/20

Remington Lock N Load 54U

ES EX75-1

ES X75

CDI Authority 77X

ES E57

ES X93

Red
Homo Polled
Purebred

Adj BW	Adj WW	Adj YW
95	673	1337
Adj Scrotal	WDA	134 Day Gain
34.7	3.65	4.18

This big hipped, wide topped bull has EPD indicators that say he should promote growth and performance in his calves along with a big REA, it's also verified with his ATM identification. He should sire a set of feeder calves with a little extra look when they go to the sale barn. He's been the #2 gaining bull since weaning.



64

65 ES HX75-1

CE SCORE



Remington Lock N Load 54U
 ES Buckshot BT51-2
 EST51
 NF Trump S582
 ES X75
 EST311

Adj BW	Adj WW	Adj YW
100	615	1196
Adj Scrotal	WDA	134 Day Gain
35.9	3.44	3.66

CE	BW	WW	YW	ADG	MCE	Milk	MWW	Stay	DOC	CW	YG	Marb	BF	REA	API	TI
4	5.1	90	138	.30	-2	19	64	15	9.2	34.0	-.42	.06	-.073	1.05	106	74
		10	10	25			30				10		15	4		

REG#3758236 • BD: 4/6/20 • Hetero Black Homo Polled 3/4 SM 1/8 AN 1/8 AR



65

66 ES HX75-3

CE SCORE



CE	BW	WW	YW	ADG	MCE	Milk	MWW	Stay	DOC	CW	YG	Marb	BF	REA	API	TI
7	4.0	92	142	.31	2	17	63	8	13.3	44.9	-.42	.21	-.078	1.16	116	85
		10	10	10					25	10		30		10		20

REG#3758410
 BD: 2/14/20

Red
 Homo Polled
 Purebred

WS All-Around Z35
 WS All Aboard B80
 WS Little Sister
 NF Trump S582
 ES X75
 EST311

Adj BW	Adj WW	Adj YW
100	771	1333
Adj Scrotal	WDA	134 Day Gain
37.0	3.67	3.53



66

67 ES HX75-4

CE SCORE



CE	BW	WW	YW	ADG	MCE	Milk	MWW	Stay	DOC	CW	YG	Marb	BF	REA	API	TI
6	4.0	97	146	.31	1	17	66	11	13.0	37.0	-.47	.17	-.094	1.09	118	87
		2	3	10			30		25	25	30	35		15		15

REG#3758411
 BD: 2/10/20

Red
 Homo Polled
 Purebred

WS All-Around Z35
 WS All Aboard B80
 WS Little Sister
 NF Trump S582
 ES X75
 EST311

Adj BW	Adj WW	Adj YW
96	803	1370
Adj Scrotal	WDA	134 Day Gain
35.3	3.77	3.56



67

Full Brothers by WS All Aboard

ES X75 Sons

LOTS 65-70: You may want to show up for breakfast sale day so you have enough time to figure out which one of the brothers is the best fit for your operation. I'm glad I'm not in your shoes, the more I evaluate these guys the more confused I get. Naturally the black Buckshot son is the odd ball. If you use the EPDs, the All Aboard's have a tic more growth but the Cadillac sons offer a little more CE, that's using the #'s. Using visual appraisal, the only way I can tell the difference between the Cadillac's and All Aboard's is to read their tags. There are some differences in the designations within the Right choice program. It kinda goes without saying, only use these powerhouse bulls on cows. Their dam, X75, is 11 years old and like our other donors, has a great foot and udder, two requirements we have to end up in the donor pen. Also note the other big group of red bull's mother, B34, is a direct daughter of X75, the two groups are so alike I could be mean sale day and put them all in 1 pen. No matter what way you decide, the feeder calves out of this group should pound the scales down. But the replacements should be awesome, also check out the Cadillac full sisters, Lot 159 & 160. Not to mention the guys are taking another full sister to the BHSS, she's looking good!

Lots 68-70: Full Brothers by Leachman Cadillac

68 ES HX75-5

CE SCORE



CE	BW	WW	YW	ADG	MCE	Milk	MWW	Stay	DOC	CW	YG	Marb	BF	REA	API	TI
9	1.9	75	115	.25	1	23	60	7	9.1	31.7	-.27	.05	-.032	.89	94	69
15																

REG#3758412
BD: 2/6/20

Red
Homo Polled
5/8 SM 5/16 AR
1/16 AN

Hooks Trinity 9T
Leachman Cadillac L025A
Rempe Stabilizer YD032
NF Trump S582
ES X75
EST311

Adj BW	Adj WW	Adj YW
99	692	1233
Adj Scrotal	WDA	134 Day Gain
36.6	3.39	3.41



69 ES HX75-6

CE SCORE



CE	BW	WW	YW	ADG	MCE	Milk	MWW	Stay	DOC	CW	YG	Marb	BF	REA	API	TI
8	1.3	79	122	.27	0	23	63	10	11.8	26.5	-.18	.15	-.037	.51	105	74
35																

REG#3758413
BD: 2/6/20

Red
Homo Polled
5/8 SM 5/16 AR
1/16 AN

Hooks Trinity 9T
Leachman Cadillac L025A
Rempe Stabilizer YD032
NF Trump S582
ES X75
EST311

Adj BW	Adj WW	Adj YW
73	711	1273
Adj Scrotal	WDA	134 Day Gain
38.1	3.50	3.54



70 ES HX75-7



CE SCORE



CE	BW	WW	YW	ADG	MCE	Milk	MWW	Stay	DOC	CW	YG	Marb	BF	REA	API	TI
5	2.2	82	129	.30	-2	23	64	11	8.9	38.2	-.28	.17	-.051	.84	105	75
25																

REG#3758414
BD: 2/6/20

Red
Homo Polled
5/8 SM 5/16 AR
1/16 AN

Hooks Trinity 9T
Leachman Cadillac L025A
Rempe Stabilizer YD032
NF Trump S582
ES X75
EST311

Adj BW	Adj WW	Adj YW
95	680	1188
Adj Scrotal	WDA	134 Day Gain
36.1	3.28	3.21



71 ES HB34-2

CE SCORE

★★★

CE	BW	WW	YW	ADG	MCE	Milk	MWW	Stay	DOC	CW	YG	Marb	BF	REA	API	TI
8	1.9	99	149	.31	3	16	66	10	13.4	45.9	-.51	.14	-.091	1.34	124	90
		2	2	10			30		25	10	15		2			10

REG#3758429 • BD: 2/17/20 • Red Homo Polled Purebred

WS All-Around Z35
 WS All Aboard B80
 WS Little Sister
 Remington Lock N Load 54U
 ES B34
 ES X75

Adj BW	Adj WW	Adj YW
102	677	1273
Adj Scrotal	WDA	134 Day Gain
36.7	3.47	3.73



Here they are folks! Have fun with this set of flush brothers. On the four All Aboard sons my notes out in the lot were almost identical. They are bigger bulls that are long sided and packed full of muscle. These guys even made me step back and say WOW! They also all have the Right Choice ATM designation which means more \$ when the calves go to town. They all are also top WDA bulls. The WS Outcross son would probably have the look of a more calving ease option. Although we have used All Aboard very successfully on heifers also. Maternal sister sells as Lot 161. Use them how you want, but a terminal cross on a great set of Red Angus cows would be a dream come true the day those calves go to the sale barn. Study your lesson in the catalog, B34 is a daughter of the X75 cow who has her own set of flush bulls to brag about. I think you'll notice them, this cow family is consistent!

72 ES HB34-3

CE SCORE

★★★

CE	BW	WW	YW	ADG	MCE	Milk	MWW	Stay	DOC	CW	YG	Marb	BF	REA	API	TI
9	3.0	95	144	.31	4	16	64	10	14.8	40.2	-.56	.12	-.111	1.29	121	86
		4	5	10					15	15	3		10	2		15

REG#3758430 • BD: 2/15/20 • Red Homo Polled Purebred

WS All-Around Z35
 WS All Aboard B80
 WS Little Sister
 Remington Lock N Load 54U
 ES B34
 ES X75

Adj BW	Adj WW	Adj YW
90	750	1346
Adj Scrotal	WDA	134 Day Gain
39.6	3.68	3.73



ES GB34-2, Maternal Brother to Lots 71-75



ES GB34-3, Maternal Brother to Lots 71-75

Lots 71-75: Sons of ES B34

73 ES HB34-4



CE SCORE



CE	BW	WW	YW	ADG	MCE	Milk	MWW	Stay	DOC	CW	YG	Marb	BF	REA	API	TI
9	3.6	100	154	.34	4	16	66	8	13.1	48.2	-.49	.27	-.092	1.30	126	92
		1	1	3			30		25	4	20	20	2			4

REG#3758431 • BD: 2/15/20 • Red Homo Polled Purebred

WS All-Around Z35
WS All Aboard B80
WS Little Sister
Remington Lock N Load 54U
ES B34
ES X75

Adj BW	Adj WW	Adj YW
108	765	1367
Adj Scrotal	WDA	134 Day Gain
33.1	3.74	3.77



74 ES HB34-5



CE SCORE



CE	BW	WW	YW	ADG	MCE	Milk	MWW	Stay	DOC	CW	YG	Marb	BF	REA	API	TI
11	2.6	93	143	.31	5	16	63	12	14	30.6	-.48	.17	-.092	1.06	129	87
		5	5	10					15		25	35		15		15

REG#3758432
BD: 2/14/20

Red
Homo Polled
Purebred

WS All-Around Z35
WS All Aboard B80
WS Little Sister
Remington Lock N Load 54U
ES B34
ES X75

Adj BW	Adj WW	Adj YW
72	761	1291
Adj Scrotal	WDA	134 Day Gain
35.5	3.55	3.32



75 ES HB34-6

CE SCORE



CE	BW	WW	YW	ADG	MCE	Milk	MWW	Stay	DOC	CW	YG	Marb	BF	REA	API	TI
10	.8	80	123	.27	5	19	59	16	9.9	39.2	-.46	-.03	-.111	.97	123	76
	30		30	25						20	35		10	30		

REG#3758433 • BD: 2/14/20 • Red Homo Polled Purebred

GW Carry On Z0219
WS Outcross C164
WS Aurora Z235
Remington Lock N Load 54U
ES B34
ES X75

Adj BW	Adj WW	Adj YW
71	578	1160
Adj Scrotal	WDA	134 Day Gain
35.5	3.15	3.66

76 ES HF109

CE SCORE



Hooks Trinity 9T
Leachman Cadillac L025A
Rempe Stabilizer YD032
WS All Aboard B80
ES F109
EIR W209

Adj BW	Adj WW	Adj YW
73	580	1144
Adj Scrotal	WDA	134 Day Gain
33.0	3.00	3.58

CE	BW	WW	YW	ADG	MCE	Milk	MWW	Stay	DOC	CW	YG	Marb	BF	REA	API	TI
14	-3.2	73	114	.25	6	22	59	9	14.8	29.1	-.18	.21	-.027	.62	122	78
35	10								15							

REG#3758363 • BD: 2/22/20 • Red Homo Polled 1/2 SM 7/16 AR 1/16 AN



If you're looking for a low % red Simmy bull with some calving ease, your search is over. His sire, Cadillac, is a bull we have used very successfully on heifers for years. This bull is super complete from front to back. Now for the really good part of the lesson, his dam is a natural calf out of the good W209 Red Angus cow and the mother to the awesome W209 X Authority sons, Lots 79 & 80 in the bull division.



ES D71, Daughter of Grandam to Lot 76

77 ES HC72

CE SCORE



CE	BW	WW	YW	ADG	MCE	Milk	MWW	Stay	DOC	CW	YG	Marb	BF	REA	API	TI
15	-.9	80	134	.34	7	23	63	18	12.9	45.0	-.35	.21	-.080	.93	141	81
25	25	30	15	10			35	20	35	15	20		15	10	30	35

REG#3758207
BD: 3/18/20

Red
Homo Polled
3/4 SM 1/8 AN 1/8 AR

GW Carry On Z0219
WS Outcross C164
WS Aurora Z235
CDI Authority 77X
ES C72
ES Z87

Adj BW	Adj WW	Adj YW
79	655	1272
Adj Scrotal	WDA	134 Day Gain
36.8	3.58	3.88



ES FC72, Maternal Brother to Lot 77



This guy probably isn't going to win the State Fair, but if your main goal is to be in the business of raising beef and keeping some replacement females, his dam has been a good one. He ratioed 102 for WW then turned it on being one of our top gaining bulls to ratio 107 for YW. Received a 9+ on udder score last spring and had 2 bulls in past sales that went to performance minded operations. She's done it every year, ratioing 105 for WW on 4 calves and three bulls powered on to ratio 113 for YW.

78 ES HF117

CE SCORE



CE	BW	WW	YW	ADG	MCE	Milk	MWW	Stay	DOC	CW	YG	Marb	BF	REA	API	TI
7	1.9	97	145	.30	2	19	68	9	13.5	41.3	-.49	.31	-.093	1.21	129	93
	3	4	15				25	20	15	20	15		15	4		4

REG#3758350
BD: 2/19/20

Red
Homo Polled
Purebred

WS All-Around Z35
WS All Aboard B80
WS Little Sister
Ellingson Complete A358
ES F117
ES C101

Adj BW	Adj WW	Adj YW
107	728	1279
Adj Scrotal	WDA	134 Day Gain
36.3	3.33	3.47



No holes in this guy which is typical of the All Aboards. The All Aboards have been sale features at Keller's in North Dakota for several years. He also hits in a lot of categories across his EPD profile.

79 ES HW209-2

CE SCORE

★★★

CE	BW	WW	YW	ADG	MCE	Milk	MWW	Stay	DOC	CW	YG	Marb	BF	REA	API	TI
5	3.8	72	112	.25	0	22	58	15	18.7	22.0	-.25	.13	-.038	.67	103	66

REG#3758418 • BD: 2/10/20 • Red Homo Polled 1/2 SM 1/2 AR

What a pair of flush brothers!! When it comes to putting bulls together to turn out in one pasture, what makes more sense than a pair of brothers, especially of this caliber, they'll make the neighbors stop and take a second look when they drive by. They are both good bulls but the W209-2 is an absolute stud, being the #1 WDA and #5 gaining bull since weaning. If you think these powerhouses are just terminal, guess again, take a look at the full sister that sold 3 years ago, she was our high selling red bred that year. We have an open heifer that Paul and his family put a halter on that's getting her share of nods from the judge and the project will only get better as she matures into a bred heifer.



ES D71, Full Sister to Lot 79 & 80



79

Lots 79 & 80: Full Brothers

80 ES HW209-1

CE SCORE

★★★

CE	BW	WW	YW	ADG	MCE	Milk	MWW	Stay	DOC	CW	YG	Marb	BF	REA	API	TI
5	2.4	65	98	.21	0	22	54	17	10.6	18.3	-.27	.05	-.038	.67	103	61

REG#3758417
BD: 2/12/20Red
Homo Polled
1/2 SM 1/2 AR

NF Trump S582
CDI Authority 77X
CDI Ms. Crocket 88T
OHRR Dakota Copper 29K
EIR W209
EIR S218

Adj BW	Adj WW	Adj YW
100	646	1156
Adj Scrotal	WDA	134 Day Gain
36.9	3.23	3.25



80

81 ES HZ44

CE SCORE

★★★

CE	BW	WW	YW	ADG	MCE	Milk	MWW	Stay	DOC	CW	YG	Marb	BF	REA	API	TI
11	.9	69	104	.22	1	22	57	17	12.9	21.2	-.43	.09	-.070	.97	128	72

REG#3758189
BD: 3/16/20Red
Hetero Polled
Purebred

NF Trump S582
CDI Authority 77X
CDI Ms. Crocket 88T
Remington Lock N Load 54U
ES Z44
ESU86

Adj BW	Adj WW	Adj YW
84	635	1135
Adj Scrotal	WDA	134 Day Gain
40.2	3.21	3.13

This moderate-framed guy has as much middle 1/3 as any in the offering. Much like his dam, Z44. If it's replacement females, this guy can plead quite a case why he should be considered. His full sister was the choice of our breds a couple years ago by Bruce & Sterling Kappes and there is another full sister in the bred division this year that isn't too bad either, Lot 164.



ES G62, Full Sister to Lot 81, Sells as Lot 164

82 ES HY60

CE	BW	WW	YW	ADG	MCE	Milk	MWW	Stay	DOC	CW	YG	Marb	BF	REA	API	TI
6	4.7	90	138	.30	0	21	66	15	11.9	29.3	-.31	.32	-.050	.86	123	81
		10	10	25			20				25			20		35

REG#3758295 • BD: 3/27/20 • Red Homo Polled 3/4 SM 1/4 AR



82

NF Trump S582
 CDI Authority 77X
 CDI Ms. Crockett 88T
 WS Beef King W107
 ES Y60
 EIR U219

Adj BW	Adj WW	Adj YW
96	731	1218
Adj Scrotal	WDA	134 Day Gain
39.3	3.49	3.06

This is the 5th time we have bred the Y60 cow to Authority if it's not broken don't fix it. A full sister was our high selling bred 2 years ago commanding \$13,500 and went to Canada. My coming 3-yr-old granddaughter was helping with footnotes and said, "this bull has a deep belly and big nuts grandpa", she also said Paul should "stick to goats" (HA HA)! Watch out Brady Jensen, in 18 years she may be a force to be reckoned with on the SDSU livestock judging team.

(PS: He's one of Adam's favorites).



ES E77, Full Sister to Lot 82

83 ES HZ59

CE	BW	WW	YW	ADG	MCE	Milk	MWW	Stay	DOC	CW	YG	Marb	BF	REA	API	TI
15	-2.1	79	115	.22	7	20	59	12	11.7	27.6	-.37	.33	-.061	.91	144	88
	10	4				35							15		20	10

REG#3758381
BD: 3/19/20Red
Homo Polled
Purebred

WS All-Around Z35
 WS All Aboard B80
 WS Little Sister
 NF Trump S582
 ES Z59
 EST45

Adj BW	Adj WW	Adj YW
69	680	1252
Adj Scrotal	WDA	134 Day Gain
36.4	3.53	3.58



83



ES D96, Maternal Sister to Lot 83



ES F76, Full Sister to Lot 83

Just a real soggy beef bull sired by one of our go to red bulls the past few years, All Aboard. Ratioed 106 for both WW & YW, dam is a nice uddered Trump daughter that has a WW ratio of 102 on 7 calves, five have been heifers.

84 ES HC201

CE	BW	WW	YW	ADG	MCE	Milk	MWW	Stay	DOC	CW	YG	Marb	BF	REA	API	TI
11	.0	89	146	.35	7	21	66	10	17.2	44.2	-.19	.31	-.029	.81	125	87
		10	5	5			20		3	20				25		15

REG#3758219
BD: 3/22/20Red
Homo Polled
1/2 SM 1/2 AR

WS All-Around Z35
 WS All Aboard B80
 WS Little Sister
 Beckton Epic R397 K
 EIR C201
 EIR A215

Adj BW	Adj WW	Adj YW
95	792	1273
Adj Scrotal	WDA	134 Day Gain
38.5	3.62	3.06



84



ES FC201, Full Brother to Lot 84

This guy is coming highly recommended by us here at ES. He's a full brother to one of our favorite bulls two years ago purchased by Adam Palmquist. He is our #2 WW bull ratioing 123, ratioed 107 for YW and top 10% WDA. All Aboard has really clicked on his dam, C201, three full sibs have an amazing WW ratio of 118. As a bonus we have scored her very high on udder quality each spring. He is missing part of an ear, just happened about a month ago and honestly, we have no idea what happened. The good news, his calves will be fine, guaranteed!

85 ES HY203

CE SCORE

★★★

CE	BW	WW	YW	ADG	MCE	Milk	MWW	Stay	DOC	CW	YG	Marb	BF	REA	API	TI
12	.3	74	127	.33	8	18	55	15	20.9	21.0	-.20	.25	-.044	.45	130	76
			25	10	25				1							

REG#3758440 • BD: 3/7/20 • Red Homo Polled 1/2 SM 1/2 AR

DCR Mr. Moon Shine X102

TNT Red Eye A212

TNT Miss Y32

MLK CRK Cub 722

EIR Y203

EIR W200

Adj BW	Adj WW	Adj YW
76	693	1185
Adj Scrotal	WDA	134 Day Gain
36.2	3.36	3.13

Twin. He's one of those bulls that on paper isn't going to blow you away in any one category but try to pick him apart whether on paper or in person and you can't do that either. I scored him high on visual appraisal. Smooth made, so complete from end to end. His dam is a solid producer with a WW ratio of 107 on her progeny.



ES FY203, Maternal Brother to Lot 85



85

86 ES HB201

CE SCORE

★★★

CE	BW	WW	YW	ADG	MCE	Milk	MWW	Stay	DOC	CW	YG	Marb	BF	REA	API	TI
13	-.1	73	126	.33	9	21	58	16	18.6	26.9	-.19	.25	-.041	.50	132	76
			30	10	20				2							

REG#3758215

BD: 4/20/20

Red
Homo Polled
1/2 SM 1/2 AR

DCR Mr. Moon Shine X102

TNT Red Eye A212

TNT Miss Y32

HXC Conquest 4405P

EIR B201

EIR Z204

Adj BW	Adj WW	Adj YW
79	777	1318
Adj Scrotal	WDA	134 Day Gain
40.1	3.79	3.43



ES FB201, Full Brother to Lot 86

Cowboys don't let this one slip by. At first glance you may move on, but this April bull is smoking. He started off at only 80 lbs then went on to be the #3 WW bull ratioing 121 and E4 YW bull ratioing 111. As you would guess he was also the #2 WDA. His full brother that went to Mike Stoeber was very impressive also.

87 ES HE78-2

CE SCORE

★★★

CE	BW	WW	YW	ADG	MCE	Milk	MWW	Stay	DOC	CW	YG	Marb	BF	REA	API	TI
10	2.4	84	128	.27	4	31	73	17	10.0	39.1	-.40	.25	-.072	1.06	139	85
			25	20	25	10	10		20		20			15	25	20

REG#3758342

BD: 4/7/20

Red
Homo Polled
Purebred

CDI Abundance 391C

LCDR Intrigue 749E

KBHR Cherry C086

CDI Authority 77X

ES E78

ES Z44

Adj BW	Adj WW	Adj YW
82	657	1131
Adj Scrotal	WDA	134 Day Gain
35.4	3.21	2.99

His mother is a cow we really admire, the Authority X Z44, is a combination that works. Adam showed the E78 heifer one summer as she really wasn't what most would consider a show heifer. She never out-right ever won anything but was always at the top because she was so sound and just had so much brood cow potential, no judge could ever bury her. Her disposition was also a bonus, she gathered her ribbons in the showmanship category.



ES D84, Full Sister to Dam to Lot 87

88 ES HD216

CE	BW	WW	YW	ADG	MCE	Milk	MWW	Stay	DOC	CW	YG	Marb	BF	REA	API	TI
6	2.5	77	114	.23	4	24	62	16	13.7	17.4	-.24	.46	-.020	.69	128	79
									25			25				

REG#3758325 • BD: 3/21/20 • Red Homo Polled 1/2 SM 1/2 AR



88

CDI Ambition 255C
LCDR/CDI Fierce 81E
CDI Ms. Trump 101Y
Beckton Epic R397 K
EIR D216
EIR T212

Adj BW	Adj WW	Adj YW
74	717	1264
Adj Scrotal	WDA	134 Day Gain
36.0	3.55	3.47

Take a look at this bull, take a look at the paper, he seems to put it all together. He ratioed 112 for WW and 107 for YW. Get around behind him, he's a big-topped rascal you could set your beer on and not tip over. A maternal brother sold to Scott Rotert last year.



ES FZ85, Maternal Brother to Lot 89



ES F21, Maternal Sister to Lot 90

89 ES HZ85

CE	BW	WW	YW	ADG	MCE	Milk	MWW	Stay	DOC	CW	YG	Marb	BF	REA	API	TI
3	2.8	80	113	.21	2	20	60	18	15.0	18.9	-.31	.48	-.045	.74	129	80
		30						20	15		25	20		35		

REG#3758377 • BD: 4/14/20

Red Homo Polled
3/4 SM 1/4 AR

Buy your bulls backed by good cow families. A daughter of his dam, Z85, is the D55 donor who is the mother of Lots 1 & 2 in the front of the catalog. His granddam, T202, was our go to Red Angus cow for many years whether we bred her Simmental or Red Angus, the matings worked. His sire, Fierce, offers some new blood combined with a time-tested bottom side of the pedigree.

CDI Ambition 255C
LCDR/CDI Fierce 81E
CDI Ms. Trump 101Y
WS Beef King W107
ES Z85
EIR T202

Adj BW	Adj WW	Adj YW
99	640	1209
Adj Scrotal	WDA	134 Day Gain
35.3	3.53	3.58

90 ES HD65

CE	BW	WW	YW	ADG	MCE	Milk	MWW	Stay	DOC	CW	YG	Marb	BF	REA	API	TI
11	-1.3	65	81	.10	6	19	51	20	9.2	6.2	-.39	.51	-.053	.77	146	77
	20							3			10	20	35	30	20	

REG#3758235 • BD: 3/12/20

Red Homo Polled
3/4 SM 1/4 AR

With his -1.3 BW EPD and 77 lb BW I would like to give him 4 stars for calving ease, but there is just too much power in the birth weight category with his sire, Fierce. Not matter what, he appears to be a trouble free bull with a good set of feet.

CDI Ambition 255C
LCDR/CDI Fierce 81E
CDI Ms. Trump 101Y
WS Beef King W107
ES D65
EIR Y206

Adj BW	Adj WW	Adj YW
77	607	1127
Adj Scrotal	WDA	134 Day Gain
35.5	3.17	3.28

91 ES HC75

CE	BW	WW	YW	ADG	MCE	Milk	MWW	Stay	DOC	CW	YG	Marb	BF	REA	API	TI
6	3.9	92	132	.25	4	17	63	15	11.8	28.4	-.38	.40	-.068	.90	127	85
	5	20					35				15	30	25	15	20	

REG#3758203 • BD: 3/19/20

Red Homo Polled
3/4 SM 1/4 AR

Just an all around nice, sound, complete middle of the road type of bull. His sire, Fierce, represents some fresh genetics on the red side for old customers. CDI Fierce was bred and raised in North Dakota and should be used to add performance to cattle.

CDI Ambition 255C
LCDR/CDI Fierce 81E
CDI Ms. Trump 101Y
WS Beef King W107
ES C75
EIR T217

Adj BW	Adj WW	Adj YW
89	659	1138
Adj Scrotal	WDA	134 Day Gain
35.9	3.25	3.02

92 ES HE84

CE	BW	WW	YW	ADG	MCE	Milk	MWW	Stay	DOC	CW	YG	Marb	BF	REA	API	TI
6	2.8	101	158	.35	6	31	82	21	18.8	55.0	-.26	.37	-.022	1.22	145	92
		1	2	5		3	1	2	1	3		35		1	20	5

REG#3758257 • BD: 3/21/20

Red Homo Polled
5/8 SM 5/16 AR 1/16 AN

His sire, Major Move, is a bull we used several years ago thinking he may be a heifer bull but with all the performance in his calves we moved him into the cow category. No problems, just a better fit. This guy is bred to put the gas pedal down and to, top 1% of the breed in five different economic traits. WW & YW ratios of 114 and 108 along with a G+ & ATM designation. This mating is no fluke, two full sibs have a WW ratio of 121...wow!

GW Movin On 183C
GW Major Move 590E
GW Miss Predestined 147Y
CDI Abundance 391C
ES E84
EIR A215

Adj BW	Adj WW	Adj YW
99	729	1283
Adj Scrotal	WDA	134 Day Gain
35.0	3.58	3.51

93 EIR HE200

CE SCORE

★★★

CE	BW	WW	YW	Milk	Stay	MA	RE	BF
12	-1.4	78	132	26	12	.43	.35	.02
		3	2				9	

REG#4291097 • BD: 3/15/20

Purebred Red Angus

This guy has been our favorite Red Angus bull since day 1, all summer in the pasture he's the one that caught my eye. He would be the logical choice for a performance Red Angus bull. He's #1 WW, YW and WDA bull in the Red Angus sale, but even more important, consistency, his mother raised the #1 Red Angus bull in last year's sale and his grandam had a Simmental bull that was #1 in the Simmental division two years ago and has a solid bull again this year. It may also be helpful, he's a bit of an outcross pedigree for old customers.



EIR GE200, Maternal Brother to Lot 93



93

94 EIR HA225

CE SCORE

★★★

CE	BW	WW	YW	Milk	Stay	MA	RE	BF
11	-.2	70	111	29	15	.31	.40	.02
		13	18	16			6	

REG#4291079
BD: 3/27/20Purebred
Red Angus

EIR EA225, Maternal Brother to Lot 94

Red U-2 Riff 1213C
EGL GCC Red Eagle E7194
TJS Sarabel A174
Messmer Packer S008
EIR A225
EIR T202

He's the only bull in the offering sired by Red Eagle, an outcross bull. His dam is no stranger to bringing home sons with enough quality to make the bull sale, several have been the top WW or WDA Red Angus bulls in the offering. A bonus, his good uddered mother, an own daughter of our great T202 donor.

Adj BW	Adj WW	Adj YW
88	705	1087
Adj Scrotal	WDA	126 Day Gain
32.5	3.04	2.39



94

95 EIR HX204

CE SCORE

★★★

CE	BW	WW	YW	Milk	Stay	MA	RE	BF
11	-2.2	65	101	26	14	.54	.12	.02
		29				20		

REG#4291059
BD: 4/17/20Purebred
Red Angus

SLGN Wideload 920W
Pelton Wideload 78B
Pelton Miss Jayla 0508S
MLK CRK Cub 722
EIR X204
EIR U201

Adj BW	Adj WW	Adj YW
78	732	1165
Adj Scrotal	WDA	126 Day Gain
34.7	3.22	2.69

Don't let his age fool you, his maternal brother in last year's sale was one of my favorites. Buy your seedstock from solid cow families. His mother has weaned 9 calves with a 103 WW ratio and his grandam is still in the herd.



ES GX204, Maternal Brother to Lot 95

96 EIR HE204

CE SCORE

★★★

CE	BW	WW	YW	Milk	Stay	MA	RE	BF
10	-.8	69	114	24	14	.65	.22	.03
		16	13			7	24	

Analyzing this individual, he has the look of being a 4-star calving ease bull, but when I look back at his pedigree there are a couple of cows that were more performance orientated. I guess what I'm saying is maybe not a slam dunk heifer bull, but if you're one to push the envelope, he could work.

REG#4291095 • BD: 3/20/20

Purebred Red Angus

SLGN Wideload 920W
Pelton Wideload 78B
Pelton Miss Jayla 0508S
Bieber Deep End B597
EIR E204
EIR X211

Adj BW	Adj WW	Adj YW
74	604	1167
Adj Scrotal	WDA	126 Day Gain
35.3	3.12	3.51

GREETINGS FROM EVERYONE AT JK ANGUS!

After a 2 year break we are happy to again be a part of this sale. We are extremely proud of this set of bulls. They are without a doubt the best set we have ever weaned and they have just kept growing. We have only saved the very best for this offering. We feel there will be a bull to fit the needs of anyone.

As you can see we don't do much Aling choosing instead to buy and use top notch bulls that excel in growth, maternal, feed efficiency, structure and phenotype. We don't chase single traits and are feel our herd is very well rounded. JK High Point 745 our hi selling bull in 2018 is proving that we are right on track as semen sales are strong and his progeny are topping sales around the country. We feel there are bulls in this offering that could do the same.

In closing, we invite you to look over the sale offering and invite you to stop by the farm anytime to look at the bulls. If you have any questions feel free to call Ross, Billy, or Jeff. See you Sale Day!

The JK Crew



97 JK High Point 027

CED	BW	WW	YW	MM
+9	+7	+78	+138	+32
30		4	5	10

REG#19699163 • BD: 1/9/20 • **Purebred Angus**

Vin-Mar Johnny Cash 3513
High Point Ring of Fire 5071
High Point Blackbird 3009
J&J Weigh Up 294
JK Blackcap Bessie 798
J K Blackcap Bessie 180

BW	Adj WW	Adj YW
86	843	1469
Scrotal		
38		

Heifers or cows. This rascall has it all.. looks, size and performance. Ring of Fire son out of a good 294 daughter with a beautiful udder. Weaning ratio of 112 with a 111 yearling ratio. Definite herdsire.



98 JK Weigh Up 009

CED	BW	WW	YW	MM
+2	+7	+40	+72	+26

REG#19699143
BD: 12/31/19

Purebred Angus

Plattmeyer Weigh Up K360
J&J Weigh Up 294
J & J Miss Georgina 294
K M Krugerrand Krush
J K Soldierette 525
J K Soldierette 051

BW	Adj WW	Adj YW
94	721	1262
Scrotal		
38		

Heifers or cows. Embryo transfer calf from our 525 donor out of Weigh Up 294. He comes from a long line of Pathfinder cows.



99 JK High Point 011

CED	BW	WW	YW	MM
+6	+1.8	+58	+106	+23

REG#19699151
BD: 1/3/20

Purebred Angus

Vin-Mar Johnny Cash 3513
High Point Ring of Fire 5071
High Point Blackbird 3009
S A One Way 298
J K Blackbirds Lady 256
J K Blackbirds Lady 217

BW	Adj WW	Adj YW
93	737	1326
Scrotal		
36.5		

Larger heifers or cows. A Ring Of Fire that traces back to the highest marbling bull scanned at Bon View.

100 JK High Point 017

REG#19699154
BD: 1/5/20

Purebred Angus

CED	BW	WW	YW	MM
+10	+1.3	+70	+128	+31
20		15	10	15

Vin-Mar Johnny Cash 3513
High Point Ring of Fire 5071
High Point Blackbird 3009
Nelsons Meatmaker S601
J K Miss Queen 024
J K Miss Queen 537

BW	Adj WW	Adj YW
70	809	1428
Scrotal		
44		

Heifers or cows. Calving ease twin out of an 11 year old Pathfinder cow. He had a weaning ratio of 107 and a yearling ratio of 108.



LIVE BIDDING AT
DVAuction
Broadcasting Real-Time Auctions

VIDEO AUCTION ON ALL CATTLE!
• No cattle will go through a sale ring •

101 JK High Point 012

REG#19699144
BD: 1/3/20

Purebred Angus

High Point Ring of Fire 5071
JK High Point 745
J K Blackbird 408
S A Romeo 1202
JK Miss Blackbird 850
J K Miss Blackbird 936

Larger heifers and cows. Brother in blood to 013. If you want a pet this is the bull.

CED	BW	WW	YW	MM
+10	+1.3	+79	+135	+23
20		4	10	

BW	Adj WW	Adj YW
98	757	1312

Scrotal
36.5



102 JK High Point 013

REG#19699152
BD: 1/3/20

Purebred Angus

High Point Ring of Fire 5071
JK High Point 745
J K Blackbird 408
S A Romeo 1202
JK Miss Blackbird 849
J K Miss Blackbird 936

High Point 745 son with a little more frame. Weaning ratio of 106 and a yearling ratio of 105, he'll sire heavy weaning calves. Brother in blood to 012.

CED	BW	WW	YW	MM
-2	+6.1	+94	+168	+23
		1	1	

BW	Adj WW	Adj YW
102	799	1391

Scrotal
38.5



103 JK High Point 015

REG#19699153 • BD: 1/5/20 • Purebred Angus

Vin-Mar Johnny Cash 3513
High Point Ring of Fire 5071
High Point Blackbird 3009
A A R Ten X 7008 S A
JK Erica Lass 544
J K Erica Lass 0111

Good made bull with a little extra frame that should sire some awesome feeders.

CED	BW	WW	YW	MM
+4	+3.6	+66	+126	+25
		25	15	

BW	Adj WW	Adj YW
99	743	1321

Scrotal
38.5

104 JK High Point 021REG#19699157
BD: 1/7/20

Purebred Angus

CED	BW	WW	YW	MM
+7	+1.3	+71	+126	+21
		15	15	

High Point Ring of Fire 5071
 JK High Point 745
 J K Blackbird 408
 Jindra Double Vision
 ME Queen of Crackerjack 138
 ME Queen of Crackerjack 462

BW	Adj WW	Adj YW
85	750	1368

Scrotal
38.5



Larger heifers or cows. Thick made, moderate framed 745 son from a first calf heifer. He is one of our top gaining bulls from weaning to yearling.

**105 JK High Point 024**

CED	BW	WW	YW	MM
+8	+6	+72	+127	+23
35	35	10	15	

REG#19699160
BD: 1/8/20Purebred
Angus

High Point Ring of Fire 5071
 JK High Point 745
 J K Blackbird 408
 J&J Weigh Up 294
 JK Soldierette 832
 JK Soldierette 638

BW	Adj WW	Adj YW
81	772	1374

Scrotal
37

Heifers or cows. High Point 745 from a first calf heifer that is from our best cow family. He might be a little short on the ear but he's long on performance.

**106 JK Territory 030**

CED	BW	WW	YW	MM
+2	+2.7	+70	+127	+32
		15	15	10

REG#19699166
BD: 1/9/20Purebred
Angus

Baldrige Territory Z068
 Ponca Creek Territory 1180
 Ponca Creek Blackbird 1180
 S A Romeo 1202
 JK Miss Lady 679
 J K Miss Lady 911

BW	Adj WW	Adj YW
100	811	1369

Scrotal
41

811 pound weaning weight with no creep. Territory son that should sire calves that will make the neighbors jealous and get the feeder buyers excited. Weaning ratio of 108 with a 104 yearling ratio.

107 JK Territory 023REG#19699159
BD: 1/8/20

Purebred Angus

CED	BW	WW	YW	MM
+7	-2	+74	+127	+29
	20	10	15	25

Baldrige Territory Z068
 Ponca Creek Territory 1180
 Ponca Creek Blackbird 1180
 J&J Weigh Up 294
 JK Star Gene 764
 J & J Star Gene 281

BW	Adj WW	Adj YW
85	774	1336
Scrotal		
38		

Heifers or cows. Soggy made, moderate framed, calving ease son of Territory.

**108 JK Territory 031**REG#19699167
BD: 1/9/20

Purebred Angus

Baldrige Territory Z068
 Ponca Creek Territory 1180
 Ponca Creek Blackbird 1180
 Bushs the Duke 740
 JK Soldierette 734
 J K Soldierette 525

Territory son from a daughter of our 525 donor cow.

BW	Adj WW	Adj YW
82	746	1320
Scrotal		
37		

**109 JK High Point 037**REG#19699171
BD: 1/12/20

Purebred Angus

CED	BW	WW	YW	MM
+1	+2.7	+77	+134	+20
		5	10	

Vin-Mar Johnny Cash 3513
 High Point Ring of Fire 5071
 High Point Blackbird 3009
 J&J Weigh Up 294
 JK Royal Lady 760
 J K Royal Lady 573

BW	Adj WW	Adj YW
92	746	1351
Scrotal		
37		

Larger heifers or cows. One of our favorites, he's been a real standout since birth.

110 JK High Point 042REG#196699174
BD: 1/14/20

Purebred Angus

CED	BW	WW	YW	MM
+3	+3.4	+76	+139	+22
		10	4	

Vin-Mar Johnny Cash 3513
 High Point Ring of Fire 5071
 High Point Blackbird 3009
 S A V Ferguson 3123
 J&J Delia 745
 J & J Delia 293

BW	Adj WW	Adj YW
91	823	1386
Scrotal		
36		

Big spread on the EPDs here. We had the misfortune of losing Ring of Fire so this is the last large group of his calves we will be offering. Weaning ratio of 109 with a 105 yearling ratio.



111 JK Hi Point 002

CED	BW	WW	YW	MM
+8	+1.4	+73	+130	+27
35		10	10	35

REG#19699145 • BD: 12/24/19 • **Purebred Angus**

Vin-Mar Johnny Cash 3513
 High Point Ring of Fire 5071
 High Point Blackbird 3009
 J&J Weigh Up 294
 JK Soldierette 740
 JK Soldierette 535

BW	Adj WW	Adj YW
77	739	1294
Scrotal		
39		

Heifers or cows. Ring of Fire x Weigh Up x Romeo pedigree equals predictable.



112 JK Element 053

CED	BW	WW	YW	MM
+6	+8	+62	+107	+25
35		35		

REG#19699185
 BD: 1/20/20

Purebred Angus

4M Element 405
 Varilek Element 7112 03
 Varilek Rose 4044 412
 J & J Recharge 40
 JK Miss Queen 893
 J K Miss Queen 024

BW	Adj WW	Adj YW
82	765	1328
Scrotal		
36.5		

Heifers or cows. Out of a first calf heifer that is on track to be a Pathfinder. The 024 grandam is one of our favorites.



113 JK Territory 054

CED	BW	WW	YW	MM
-2	+3.2	+66	+112	+30
		25	30	20

REG#19699186
 BD: 1/20/20

Purebred Angus

Baldrige Territory Z068
 Ponca Creek Territory 1180
 Ponca Creek Blackbird 1180
 S A Broadside 1411
 J K Rito Ideal 460
 J K Rito Ideal 124

BW	Adj WW	Adj YW
94	788	1345
Scrotal		
39		

Territory son that is long on gain and profile. Weaning ratio of 105 with a 102 yearling ratio.

114 JK Territory 049

CED	BW	WW	YW	MM
+0	+2.8	+75	+127	+29
		10	15	25

REG#19699181 • BD: 1/17/20 • **Purebred Angus**

Baldrige Territory Z068
 Ponca Creek Territory 1180
 Ponca Creek Blackbird 1180
 Mogck Bullseye
 JK Erica 529
 J K Erica 747

Heavy weaning Territory son that had a weaning ratio of 107 and a yearling ratio of 105.

BW	Adj WW	Adj YW
94	805	1384
Scrotal		
36		

115 JK High Point 047

REG#19699179
BD: 1/16/20

Purebred Angus

CED	BW	WW	YW	MM
+4	+2.3	+67	+123	+34
		20	15	5

Vin-Mar Johnny Cash 3513
High Point Ring of Fire 5071
High Point Blackbird 3009
SydGen Power Source 7017
J K Soldierette 138
J K Soldierette 525

BW	Adj WW	Adj YW
100	805	1435
Scrotal		
38		

His mother, grandmother and great grandmother are all Pathfinders. He will sire great females and heavy weaning calves. Don't let the birthweight fool you, whenever we graze cover crops it increases our weaning weights by 10-15%. Weaning ratio of 107 with a 109 yearling ratio.



115

116 JK Territory 057

REG#19699189
BD: 1/21/20

Purebred Angus

Baldrige Territory Z068
Ponca Creek Territory 1180
Ponca Creek Blackbird 1180
Mogck Bullseye
JK Lady 547
J K Lady 501

Short on ears but long on growth. Territory was the top indexing bull we purchased at the Ponca Creek dispersion.

CED	BW	WW	YW	MM
+1	+2.3	+72	+126	+30
		10	15	20

BW	Adj WW	Adj YW
86	770	1343

Scrotal
36.5



116

117 JK Territory 058

REG#19699190
BD: 1/22/20

Purebred Angus

Baldrige Territory Z068
Ponca Creek Territory 1180
Ponca Creek Blackbird 1180
S A Romeo 1202
JK Blackbird's Lady 541
J K Blackbirds Lady 930

Territory son that has been really growing. Weaning ratio of 105 with a 105 yearling ratio.

CED	BW	WW	YW	MM
-2	+4.2	+74	+131	+27
		10	10	35

BW	Adj WW	Adj YW
101	792	1389

Scrotal
38



117

118 JK Territory 055

REG#19699187 • BD: 1/21/20 • Purebred Angus

CED	BW	WW	YW	MM
+4	+1.9	+62	+115	+30
		35	25	20

Baldrige Territory Z068
Ponca Creek Territory 1180
Ponca Creek Blackbird 1180
Nelsons Meatmaker S601
J K Erica 962
J K Erica 211

Territory son from a 12 year old cow.

BW	Adj WW	Adj YW
86	730	1229

Scrotal
36.5

119 JK Element 061REG#19699193
BD: 1/25/20

Purebred Angus

CED	BW	WW	YW	MM
+0	+1.0	+50	+85	+21

4M Element 405
Varilek Element 7112 03
Varilek Rose 4044 412
JD Graduate 525
JK Royal Lady 847
J K Royal Lady 2103

BW	Adj WW	Adj YW
82	682	1242

Scrotal
37



Good bull with a nice profile. He'll sire calves that will have a really good look in the sale ring.

**120 JK Weigh Up 062**

CED	BW	WW	YW	MM
+0	+2.4	+74 10	+132 10	+23

REG#19699194
BD: 1/25/20

Purebred Angus

Plattmere Weigh Up K360
J&J Weigh Up 294
J & J Miss Georgina 294
Nelsons Meatmaker S601
J K Candy Rose 092
J K Candy Rose 731

BW	Adj WW	Adj YW
90	790	1395

Scrotal
37.5

Weigh Up son out of a Pathfinder cow. We really love our Weigh Up daughters. Weaning ratio of 105 with a 106 yearling ratio.

121 JK High Point 059REG#19699191
BD: 1/23/20

Purebred Angus

CED	BW	WW	YW	MM
+5	+2.1	+67 20	+122 20	+30 20

Vin-Mar Johnny Cash 3513
High Point Ring of Fire 5071
High Point Blackbird 3009
S A Romeo 1202
JK Miss Jilt 7113
J K Miss Jilt 305

BW	Adj WW	Adj YW
91	756	1319

Scrotal
36.5

Good Ring of Fire son that always catches your eye. He stems from the Jilt cow family that came from Bon View.

122 JK Territory 063REG#19699195
BD: 1/26/20

Purebred Angus

CED	BW	WW	YW	MM
-6	+5.0	+57	+102	+27 35

Baldrige Territory Z068
Ponca Creek Territory 1180
Ponca Creek Blackbird 1180
J K Meatmaker 212
JK Rito Ideal 680
J K Rito Ideal 124

BW	Adj WW	Adj YW
103	715	1224

Scrotal
35.5

Territory son with a good look. Territory is easy fleshing with a tremendous foot.

123 JK Territory 067

REG#19699198
BD: 1/28/20

Purebred Angus

CED	BW	WW	YW	MM
-2	+4.5	+78	+138	+32
		4	5	10

Baldrige Territory Z068
Ponca Creek Territory 1180
Ponca Creek Blackbird 1180
S A Romeo 1202
JK Blackbird 635
J K Blackbird 328

BW	Adj WW	Adj YW
110	840	1440

Scrotal
40

Big, soggy, stout Territory son. His mother is a 1650 pound cow and we would not expect her to have a 70 pound calf. If you sell your calves in the fall or feed them out, they will GAIN! 840 pound weaning weight with a ratio of 112 without creep plus a 109 yearling ratio.



124 JK Element 088

REG#19699212
BD: 2/18/20

Purebred Angus

4M Element 405
Varilek Element 7112 03
Varilek Rose 4044 412
SydGen Power Source 7017
J K Miss Queen 1104
J K Miss Queen 537

Heifers or cows. He should sire some long lasting females.

BW	Adj WW	Adj YW
88	727	1284

Scrotal
35



125 JK Element 097

REG#19699218
BD: 2/29/20

Purebred Angus

4M Element 405
Varilek Element 7112 03
Varilek Rose 4044 412
MOGCK Upward 1030
J K Blackcap Pride 393
J K Blackcap Pride 014

Heifers or cows. We used Element on our heifers for two years and he did a good job for us.

BW	Adj WW	Adj YW
85	804	1352

Scrotal
39



126 JK Element 0100REG#19699220
BD: 3/2/20

Purebred Angus

CED	BW	WW	YW	MM
+1	+2.0	+57	+99	+27 35

4M Element 405
 Varilek Element 7112 03
 Varilek Rose 4044 412
 Mogck Bullseye
 JK Miss Black Flame 6107
 J K Miss Black Flame 728

BW	Adj WW	Adj YW
92	752	1348

Scrotal
35

A good Element son that has been gaining real well since birth.



126

127 JK Element 0103

CED	BW	WW	YW	MM
+4	+1.5	+68 20	+118 20	+25

REG#19699223
BD: 3/6/20Purebred
Angus

4M Element 405
 Varilek Element 7112 03
 Varilek Rose 4044 412
 J&J Weigh Up 294
 JK Blackbird's Lady 735
 JK Blackbird's Lady 575

BW	Adj WW	Adj YW
97	783	1411

Scrotal
34

One of the youngest bulls and yet he is gaining with the rest of the bulls.



127

128 JK Territory 0106REG#19699224
BD: 3/16/20

Purebred Angus

CED	BW	WW	YW	MM
+4	+2.2	+72 10	+131 10	+34 5

Baldrige Territory Z068
 Ponca Creek Territory 1180
 Ponca Creek Blackbird 1180
 MOGCK Upward 1030
 J K Candy Rose 245
 J K Candy Rose 092

BW	Adj WW	Adj YW
90	867	1457

Scrotal
33.5

Youngest calf we are offering from the Candy Rose cow family. He has put the gas pedal down since weaning. His dam is a Pathfinder.

129 ES G164

REG#3623215 • BD: 2/10/19
Homo Black Homo Polled 3/4 SM 1/4 AN

Adj BW	Adj WW
81	533

CE	BW	WW	YW	ADG	MCE	Milk	MWW	Stay	DOC	CW	YG	Marb	BF	REA	API	TI
10	-.1	63	73	.06	3	22	53	15	11.7	-.2	-.27	.11	-.037	.45	107	64

WS Pilgrim H182U
TKCC Carver 65C
Ford RJ Dolly Y83
B C Lookout 7024
ES B101
Franks/MPC Night Dreams

This may be as fancy of a heifer as we have every offered. Yes, she took a pretty good picture, for the good ones, it's natural. She walked into the pen, took about 5 steps, and stopped and the picture was captured. She stood long enough even I was able to get it. She is no accident, her dam, B101, or known as "Minnie" around here was a fall born heifer that Adam showed and safe to say she held her own in the show ring. Minnie is very sound with an excellent udder. Her disposition was a plus as Adam won many showmanship contests with her.



129

130 ES G103

REG#3623166 • BD: 4/1/19 • Homo Black Homo Polled Purebred

Adj BW	Adj WW
81	574

CE	BW	WW	YW	ADG	MCE	Milk	MWW	Stay	DOC	CW	YG	Marb	BF	REA	API	TI
10	1.0	97	151	.34	5	18	66	15	16.5	49.5	-.32	.27	-.078	.89	144	93
	35	2	2	3			30		4	3		20			20	4

Hook's Black Hawk 50B
Hook's Eagle 6E
Hook's Crystal 1C
CCR Drover 9094A
ES C48
ES Y22

If this one doesn't get you excited, you may as well stay home and clean your toilets. She's a PB Eagle daughter that is hard to fault. From a physical standpoint she will catch you staring and on the genetic side, her numbers will work for most any cattleman. With the phenotype TJ Frosty puts in his offspring, it could get interesting.



130

LOT 129A: BULL CALF AT SIDE

Sire: TJ Gold 274G • BD: 2/5/21 • BW: 85

Est EPDs: 12 -.55 78 109 .20 5 25 64 17 13.85

Carcass: 16.05 -.27 .26 -.04 .61 144 83

LOT 130A: BULL CALF AT SIDE

Sire: TJ Frosty 318E • BD: 2/8/21 • BW: 75

Est EPDs: 12 -.85 96 144 .30 6 24 72 16 17.1

Carcass: 47.45 -.26 .24 -.07 .77 140 90

131 ES G36REG#3623247 • BD: 3/7/19 • **Homo Black Homo Polled 3/4 SM 1/4 AN**

Adj BW	Adj WW
87	593

CE	BW	WW	YW	ADG	MCE	Milk	MWW	Stay	DOC	CW	YG	Marb	BF	REA	API	TI
13	-9	89	136	.30	7	22	67	16	12.7	37.1	-.32	.48	-.058	.91	150	92
25	10	15	25			20				35	25	20	35	15	15	4



AI Sire: TJ Heisman 388F 6/25/20
Pasture Sire: CCR Witchita 4069D from 6/26 to 7/20/20 •
 7/12/20 • Due 4/20/21 • Vet called safe
 Est EPDs: 15 -1.7 82 122 .25 9 20 61 15 16.65
 Carcass: 33.65 -.30 .31 -.05 .81 141 84

Hook's Black Hawk 50B
 Hook's Eagle 6E
 Hook's Crystal 1C
 ES Locktite AX75
 ES C103
 ES W11

Here is a dang good opportunity to own a genuinely nice Hook's Eagle daughter. She is deep bodied and equally impressive when you get behind her. She ratioed 110 for WW and out of a cow that has a 108 WW ratio on 3 calves. You've got to like her type and kind.

131**132 ES G43**

CE	BW	WW	YW	ADG	MCE	Milk	MWW	Stay	DOC	CW	YG	Marb	BF	REA	API	TI
13	-1.4	89	147	.37	6	17	62	16	12.9	49.0	-.26	.51	-.046	.96	155	94
20	10	4	2						35	10		20		10	10	3

REG#3623255
 BD: 3/10/19

Homo Black
Homo Polled
3/4 SM 1/4 AN

Adj BW	Adj WW
79	560

Hook's Eagle 6E
 Hook's Black Hawk 50B
 Hook's Crystal 1C
 ES Locktite AX75
 ES W46

AI Sire: LCDR Progressive 106G 6/6/20
Pasture Sire: CCR Witchita 4069D from 6/26 to 7/20/2020
 Vet called safe
 Est PM EPDs: 15 -1.95 82 127 .29 8 18 58 15 16.75
 Carcass: 39.6 -.27 .32 -.05 .84 143 84

Super complete individual, she is mid-sized and good in her lines. Hook's Eagle offspring were in high demand throughout last year's sales. Doesn't hurt her that her granddam is our W46 donor, check out her two Upgrade bulls in the offering, they are the cowboy's kind.

**132****133 ES G110**

CE	BW	WW	YW	ADG	MCE	Milk	MWW	Stay	DOC	CW	YG	Marb	BF	REA	API	TI
11	1.8	93	136	.27	7	24	70	19	14.3	36.5	-.32	.40	-.063	.85	156	93
10	10	10	25	35		15	15	15	25			10			10	4

REG#3623174
 BD: 4/4/19

Homo Black
Homo Polled
Purebred

Adj BW	Adj WW
87	628

WS Proclamation E202
 CCR Cowboy Cut 5048Z
 WS Miss Sugar C4
 CCR Drover 9094A
 ES A15

LOT 133A: BULL CALF AT SIDE
 Sire: TJ Flat Iron 259G • BD: 2/5/21 • BW: 88
 Est PM EPDs: 16 -.55 79 124 .29 10 31 70 18 11.6
 Carcass: 31.7 -.18 .55 -.03 .62 159 88

We probably used as much WS Proclamation as anyone the first year he was available. His sons were sale toppers at many production sales last spring and now the females are coming into production. I hope I'm not wrong, but I always felt his biggest asset may be the females he leaves behind. This is not your average heifer, she ratioed 116 for WW.

**133**

134 ES G153REG#3623204 • BD: 2/6/19 • **Homo Black Homo Polled 3/4 SM 1/4 AN**

CE	BW	WW	YW	ADG	MCE	Milk	MWW	Stay	DOC	CW	YG	Marb	BF	REA	API	TI
14	1.4	87	128	.26	9	29	72	14	17.2	54.1	-.18	.30	-.032	.90	131	84
35		15	25		20	10	5		3	4				15		25

Adj BW	Adj WW
73	561

CCR Cowboy Cut 5048Z
 WS Proclamation E202
 WS Miss Sugar C4
 W/C United 956Y
 Hook's Charity 104C
 Hook's Upper Limit 117U

This pair of heifers come from a flush joining two great cow families. The sire, Proclamation, is a son of the famous C4 cow in North Dakota and on the bottom side is Hook's Charity, our selection of the opens from Hook Farms 5 years ago. A full sister is a past NWSS champion. Charity also has a rather good Right Time bull in the bull division this year as Lot 12, check him out. Look them up sale day and see which calf you like, the Colorado or the Progressive.

Full Sisters



134

135 ES G152

CE	BW	WW	YW	ADG	MCE	Milk	MWW	Stay	DOC	CW	YG	Marb	BF	REA	API	TI
16	-2.7	80	113	.21	10	29	69	17	13.6	37.0	-.14	.32	-.028	.57	144	85
15		10	30		10	10	15	25	30	35				20		20

REG#3623203
 BD: 2/10/19

Homo Black
Homo Polled
3/4 SM 1/4 AN

Adj BW	Adj WW
55	508

WS Proclamation E202
 Hook's Charity 104C
 CCR Cowboy Cut 5048Z
 WS Miss Sugar C4
 W/C United 956Y
 Hook's Upper Limit 117U

AI Sire: Colorado Bridle Bit E752 on 5/13/20 • Due 2/19/21
 Est PM EPDs: 18 -3.35 75 105 .19 11 24 61 16 14.35
 Carcass: 29.85 -.29 .31 -.06 .65 158 86
 Pasture Sire: CCR Wichita 4069D from 6/26 to 7/20/20



135

136 ES G114

CE	BW	WW	YW	ADG	MCE	Milk	MWW	Stay	DOC	CW	YG	Marb	BF	REA	API	TI
9	4.3	87	125	.24	6	30	73	13	16.1	45.1	-.34	.19	-.076	.93	122	81
		15	25			15	10		5	10		35				30

REG#3623178
 BD: 4/6/19

Homo Black
Homo Polled
Purebred

Adj BW	Adj WW
93	599

WS Proclamation E202
 ES D113
 CCR Cowboy Cut 5048Z
 WS Miss Sugar C4
 HS Battle Cry X297K
 ES A75

AI Sire: TJ Chief 460G on 6/19/20 • Due 3/28/21
 Est PM EPDs: 11 1.35 89 133 .27 6 32 76 17 15.5
 Carcass: 41.0 -.23 .30 -.05 .77 138 85
 Pasture Sire: CCR Wichita 4069D from 6/26 to 7/20/20

A high-powered Proclamation daughter that is long sided with a WW ratio of 111. The only opportunity in this sale to buy one bred to TJ Chief, the highly promoted TJ Frosty son. His semen was hard to come by last spring. He portrays to have all the phenotype of Frosty but with more performance.



136

137 ES G116REG#3623180 • BD: 4/7/19 • **Homo Black Homo Polled Purebred**

Adj BW	Adj WW
82	546

CE	BW	WW	YW	ADG	MCE	Milk	MWW	Stay	DOC	CW	YG	Marb	BF	REA	API	TI
11	2.4	92	130	.24	7	25	71	15	13.4	33.9	-.44	.12	-.091	.99	130	85
		10	20		25		15		25	35				25		20

**137**

AI Sire: TJ Heisman 388F on 5/14/20 • Due 2/20/21
 Est PM EPDs: 9 2.25 93 139 .29 6 27 74 18 13.65
 Carcass: 38.10 -.33 .32 -.07 .85 149 91
 Pasture Sire: CCR Wichita 4069D from 6/26 to 7/20/20

Triple C Singletary S3H
 CCR Cowboy Cut 5048Z
 CCR Ms. 4045 Time 7322T
 Mr. NLC Upgrade U8676
 GLS Ashley A11
 GLS Miss Answer Z54

I got to be honest, this one is a little hard to part with. Her mother was a beast, one of the most impressive heifer calves I had seen in some time when we purchased her from GLS in 2014. G116 has many of the same characteristics as her dam "Ashley". What's hard is she's the only Cowboy Cut daughter we had out of that flush. Her two full brothers were extremely popular in last spring's bull sale as they should have been. One going to Jass Simmental, the other to Greg Heeren.



ES GA11-1,
Full Brother
to Lot 137



ES GA11-2, Full Brother
to Lot 137

138 ES G65

CE	BW	WW	YW	ADG	MCE	Milk	MWW	Stay	DOC	CW	YG	Marb	BF	REA	API	TI
7	2.1	92	146	.34	4	27	73	15	10.3	33.3	-.18	.46	-.039	.58	137	90
		5	4	10		15	4					25			35	10

REG#3623277
 BD: 3/14/19

Homo Black
Homo Polled
5/8 SM 3/8 AN

Adj BW	Adj WW
85	600

ES Upper Edge E480B

ES B94

CCR Cowboy Cut 5048Z
 W/C Miss Werning 480B
 W/C United 956Y
 ESU56

AI Sire: TJ Heisman 388F on 5/14/20 • Due 2/20/21
 Est PM EPDs: 7 2.1 93 147 .34 4 29 75 18 12.1
 Carcass: 37.8 -.20 .49 -.05 .64 146 91
 Pasture Sire: CCR Wichita 4069D from 6/26 to 7/20/20

Brood cow is the first thing that comes to mind when appraising this heifer. Her sire, Upper Edge, was purchased by Quandt Bros several years ago. Her mother is the dam of ES Epic, purchased that same year by Wayward Hills in Kentucky. Be sure to check our B94's bulls this year, Lots #17 & #18.

**138****139 ES G102**

CE	BW	WW	YW	ADG	MCE	Milk	MWW	Stay	DOC	CW	YG	Marb	BF	REA	API	TI
12	1.3	75	117	.26	7	23	61	16	9.0	22.5	-.35	.31	-.063	.78	132	77
								30			20		25	30		

REG#3623165
 BD: 4/1/19

Homo Black
Homo Polled
3/4 SM 1/4 AN

Adj BW	Adj WW
82	554

ES Upper Edge E480B

ES A15

CCR Cowboy Cut 5048Z
 W/C Miss Werning 480B
 GLS New Direction X184
 ES Y16

AI Sire: TJ Teardrop 783F on 5/7/20 • Due 2/13/21
 Est PM EPDs: 15 -.2 81 124 .27 7 31 71 19 11.3
 Carcass: 33.1 -.33 .23 -.07 .82 142 81
 Pasture Sire: CCR Wichita 4069D from 6/26 to 7/20/20

She has the parts and pieces of being a great all-around beef cow, adequate muscle, awesome rib shape and sound structure. An opportunity to get a TJ Teardrop calf as his semen is no longer available as he is deceased.

**139**

140 ES G76

REG#3623289 • BD: 3/16/19 • **Homo Black Homo Polled 5/8 SM 3/8 AN**

CE	BW	WW	YW	ADG	MCE	Milk	MWW	Stay	DOC	CW	YG	Marb	BF	REA	API	TI
8	5.3	89	133	.28	3	20	64	16	8.9	31.0	-.18	.26	-.048	.48	119	78
		10	15	35			30									

Adj BW	Adj WW
100	558

CCR Cowboy Cut 5048Z
ES Epic EB94
ES B94
J Bar J Nightride 225Z
ES D15
ES B31

Shouldn't take the real cowboys long to find this one in the pen, she reads cow power. Her TJ Gold calf comes with a lot of anticipation. He was 1 of 2 bulls that came highly recommended out of the Triangle J sale last spring. It was females like this that we feel will be his best fit.



140

141 ES G92

CE	BW	WW	YW	ADG	MCE	Milk	MWW	Stay	DOC	CW	YG	Marb	BF	REA	API	TI
9	3.2	78	113	.22	2	26	65	20	5.1	38.5	-.18	.04	-.022	.77	116	69
		35				25	25	4		30						

REG#3623305
BD: 3/22/19

**Homo Black
Homo Polled
5/8 SM 3/8 AN**

Adj BW	Adj WW
93	492

ES Epic EB94
EST51
CCR Cowboy Cut 5048Z
ES B94
DCC New Look 101
ESP85

AI Sire: LCDR Progressive 106G on 5/14/20 • Due 2/20/21
Est PM EPDs: 11 .05 84 126 .27 4 26 68 18 8.5
Carcass: 46.05 -.24 .27 -.04 .88 138 82
Pasture Sire: CCR Wichita 4069D from 6/26 to 7/20/20

Her dam is one of the oldest cows on the place at 14 years of age and still producing like a 7-year-old. She was one of our main donors producing 53 calves over the years. Her 9 natural calves had a WW ratio of 106. Unique opportunity here to own a LCDR Progressive calf. He is a PB C4 son that was exclusively used in only four herds last spring.



141

142 ES G72

CE	BW	WW	YW	ADG	MCE	Milk	MWW	Stay	DOC	CW	YG	Marb	BF	REA	API	TI
17	-2.0	56	76	.12	9	25	53	24	11.4	4.8	-.35	-.06	-.046	.67	128	60
		10	15			25	30	1			20					

REG#3623285
BD: 3/15/19

**Hetero Black
Homo Polled
3/4 SM 1/4 AN**

Adj BW	Adj WW
70	484

SFI Enough Said D3
ES Z45
CCR Cowboy Cut 5048Z
SFI Miss Too Sweet N85K
O C C Prototype 847P
ESU91

LOT 142A: BULL CALF AT SIDE
Sire: TJ Heisman 388F • BD: 2/9/21 • BW: 76
Est EPDs: 12 .05 75 111 .23 7 27 65 22 12.65
Carcass: 23.55 -.29 .23 -.05 .69 153 81

This one will make you stop and open your catalog to check out the rest of the story, as Paul Harvey would say. She has that extra rib shape which makes for a cool bred. Her 9-year-old dam consistently gets high marks in the udder quality department. Her mating to Heisman is a bonus, those calves surfaced to the top as a sire group on heifers last year.



142

143 ES G94REG#3623307 • BD: 3/23/19 • **Homo Black Baldy Homo Polled Purebred**

Adj BW	Adj WW
89	605

LOT 143A : HEIFER CALF AT SIDE

Sire: TJ Gold 274G • BD: 2/7/21 • BW: 75

Est EPDs: 13 .9 89 145 .35 6 26 71 16 11.5

Carcass: 38.85 -.36 .29 -.07 .95 152 91

WBF Significant B132

Rubys Turnpike 771E

Rubys Miss Cleo 240Z

Remington Lock N Load 54U

ES A117

ESU56

Hey boys, here's a head turner, stout made, powerful Turnpike baldy. If that don't get your attention look at the bottom of the pedigree A117, a Lock N Load daughter, who spent some time in the donor pen. Check out her two Carver sons, Lots 3 & 4, in the bull division. A117 is also a full sister to A110, the mother of ES Right Time. Her mating to TJ Gold could be exactly that, the golden ticket.

**144 ES G13**

CE	BW	WW	YW	ADG	MCE	Milk	MWW	Stay	DOC	CW	YG	Marb	BF	REA	API	TI
12	1.9	98	145	.29	6	32	81	16	8.7	42.7	-.23	.22	-.047	.79	142	92
20	2	5	30	3	1	30	20	25	5							

REG#3623193

BD: 2/13/19

**Homo Black Baldy
Homo Polled
Purebred**

Adj BW	Adj WW
85	596

TJ High Plains 986E

ES E12

CCR Cowboy Cut 5048Z

TJ Ms. 38W

W/C Lock Down 206Z

ES C13

LOT 144A: BULL CALF AT SIDE

Sire: Hook's Eagle 6E • BD: 2/5/21 • BW: 82

Est PM EPDs: 13 .1 100 155 .34 8 26 76 17 14.05

Carcass: 42.7 -.28 .37 -.05 .94 163 100

If you like them with a little more frame, these High Plains daughters are a sire group to look at. If you are a number cruncher, her Hook's Eagle baby may very well pay for your purchase, take a close look at the couple of Eagle sired breds in the sale to find out what I mean. Wouldn't a blaze-faced Eagle baby be cool, we'll know by sale day. She ratioed 110 for WW.

**145 ES G120**

CE	BW	WW	YW	ADG	MCE	Milk	MWW	Stay	DOC	CW	YG	Marb	BF	REA	API	TI
15	-1.8	75	112	.23	5	27	65	18	12.4	41.3	-.42	.23	-.076	1.11	140	80
20	15					15	25	15	25	10				15	2	30

REG#3623184

BD: 4/13/19

**Homo Black
Hetero Polled
5/8 SM 3/8 AN**

Adj BW	Adj WW
75	538

TJ Main Event 503B

ES B67

Mr. NLC Upgrade U8676

TJ Miss New Day U14

Remington Lock N Load 54U

ESU21

AI Sire: TJ Heisman 388F on 5/12/20 • Due 2/18/21

Est PM EPDs: 11 .15 85 129 .28 5 29 71 19 13.15

Carcass: 41.8 -.32 .38 -.06 .91 148 86

Pasture Sire: CCR Wichita 4069D from 6/26 to 7/20/20

If you see her brother in the bull division, Lot 32, you won't quit bidding on this heifer until you own her. He's not the biggest bull in the lot but I sure find myself walking over to see who that bull is a lot and it's the B67 bull. Another full brother sold to Kurt Stiefvater in 2018. If you like a look in cattle, this mating is consistent. Her mother has not missed, everyone has been in the picture pen. I like the heifer, the cow, and the whole cow family.

ES EB67,
Full BrotherES D10,
Maternal Sister

146 ES G83REG#3623296 • BD: 3/17/19 • **Hetero Black Homo Polled 1/2 SM 1/2 AN**

Adj BW	Adj WW
100	611

AI Sire: TJ Flat Iron 259G on 5/10/20 • Due 2/16/21
 Est PM EPDs: 13 -.4 78 128 .31 6 32 71 14 10.3
 Carcass: 44.1 -.12 .40 -.03 .60 140 83
 Pasture Sire: CCR Wichita 4069D from 6/26 to 7/20/20

CE	BW	WW	YW	ADG	MCE	Milk	MWW	Stay	DOC	CW	YG	Marb	BF	REA	API	TI
5	2.1	92	143	.32	0	27	73	13	11.7	61.3	-.21	.09	-.068	.81	109	79
		5	10	15		15	4			2			25	25		

Mr. NLC Upgrade U8676
 TJ Main Event 503B
 TJ Miss New Day U14
 CAR Efficient 534
 ES Z10
 ES X88

Her dam has been a very constant producer for us in past sales raising females that end up selling as breds and bulls that help the sale average. The first year we used Main Event we only used him on cows and like what we saw, come to find out, he is a legitimate heifer bull. Win, win all around.



ES Z10, Full Brother to Lot 146



ES D35, Maternal Sister to Lot 146



146

147 ES G28REG#3623238
BD: 3/1/19

Homo Black
Homo Polled
5/8 SM 3/8 AN

Adj BW	Adj WW
74	480

TJ Main Event 503B
 ES E103

Mr. NLC Upgrade U8676
 TJ Miss New Day U14
 ES Loaded BU56-1
 ES X87

Pasture Sire: CCR Wichita 4069D from 6/26 to 7/20/20 •
 6/25/20 • Due 4/3/21
 Est PM EPDs: 15 -2.5 73 109 .22 7 22 59 15 16.35
 Carcass: 36.7 -.24 .09 -.05 .69 127 74

We hope this heifer follows suite with her ES Loaded mother. Good udder and the type to be around for a while. A low BW package and bred to CCR Wichita, only enhances it. Main Event has not disappointed whether they are in the replacement pen or bull pen, they are able to rise to the top.



147

148 ES G68REG#3623280
BD: 3/14/19

Homo Black
Homo Polled
3/4 SM 1/4 AN

Adj BW	Adj WW
94	584

CDI Innovator 325D
 ES D88

TJ Main Event 503B
 CDI Ms. Shear Force 49U
 CCR Drover 9094A
 ES Z40

AI Sire: TJ Heisman 388F on 5/5/20 • Due 2/11/21
 Est PM EPDs: 8 2.5 99 151 .33 3 23 73 18 10.95
 Carcass: 40.6 -.28 .35 -.07 .75 151 94
 Pasture Sire: CCR Wichita 4069D from 6/26 to 7/20/20

Innovator has left his mark in just a short couple of years. Our high selling bred was an Innovator last year and Innovator bulls have been well received across the country. Check out the performance on this gal, ratioed 108 for WW and has WW & YW EPDs that put her in the top 1% and 2% of the breed.



148

149 ES G60REG#3623272 • BD: 3/14/19 • **Homo Black Homo Polled 5/8 SM 3/8 AN**

Adj BW	Adj WW
93	629

AI Sire: Colorado Bridle Bit E752 on 5/13/20 • Due 2/19/21
 Est PM EPDs: 14 -.95 76 111 .22 7 23 61 14 11.9
 Carcass: 32.7 -.39 .24 -.09 .80 132 78
 Pasture Sire: CCR Wichita 4069D from 6/26 to 7/20/20

CE	BW	WW	YW	ADG	MCE	Milk	MWW	Stay	DOC	CW	YG	Marb	BF	REA	API	TI
7	2.1	83	125	.26	2	26	67	13	8.7	42.7	-.35	.18	-.084	.88	114	77
		20	30			25	20			20	20		10	15		



Remington Lock N Load 54U
 ES Loaded BU56-1
 ESU56
 S A V 8180 Traveler 004
 ES X27
 ESP63

ES Loaded X the X27 cow has been a very consistent mating for us, 2 years ago a full brother was senior champion at the BHSS, another full brother sold to Eddie Rusher. She ratioed 117 for WW and her 11-year-old dam is still doing a great job and ready to go to work again this year.

149**150 ES G42**

CE	BW	WW	YW	ADG	MCE	Milk	MWW	Stay	DOC	CW	YG	Marb	BF	REA	API	TI
11	1.7	84	134	.31	5	20	62	15	13.9	38.5	-.26	.07	-.053	.77	128	80
		25	15	10					20	20						35

REG#3623254
BD: 3/10/19**Homo Black
Homo Polled
Purebred**

Adj BW	Adj WW
79	495

ES Loaded BU56-1 Remington Lock N Load 54U
 ESU56
 ES D106 CCR Drover 9094A
 ES A16

AI Sire: TJ Teardrop 783F on 6/21/20 • Due 3/30/21
 Est PM EPDs: 15 .0 86 132 .29 6 29 72 18 13.75
 Carcass: 41.1 -.28 .11 -.06 .82 135 80
 Pasture Sire: CCR Wichita 4069D from 6/26 to 7/20/20

These ES Loaded daughters are always a favorite in the heifer division. Feminine, beautiful fronted, yet enough body to be a mamma cow. Seize the opportunity to get a TJ Teardrop baby as Teardrop semen is no longer on the market as he is deceased with very little semen to be found. Her maternal sister out of the same cow sold to Hoffman Ranch in Nebraska last spring.

ES F31, Maternal Sister to Lot 150

**150****151 ES G125**

CE	BW	WW	YW	ADG	MCE	Milk	MWW	Stay	DOC	CW	YG	Marb	BF	REA	API	TI
3	7.2	97	148	.32	-1	21	69	14	13.6	62.3	-.53	.00	-.133	1.31	97	75
		2	4	15			10		30	1	1		1	1		

REG#3623188
BD: 4/21/19**Homo Black
Homo Polled
3/4 SM 1/4 AN**

Adj BW	Adj WW
103	595

ES Loadout CA11-2 Remington Lock N Load 54U
 GLS Ashley A11
 ES Z111 R&R Chamberlain X744
 ESU56

AI Sire: Hook's Eagle 6E on 5/14/20 • Due 2/20/21
 Est PM EPDs: 9 2.75 100 156 .35 4 21 71 16 16.5
 Carcass: 52.5 -.43 .26 -.09 1.20 134 89
 Pasture Sire: CCR Wichita 4069D from 6/26 to 7/20/20

This gal is going to have a little more punch, Loadout X Chamberlain, and back to our old U56 donor. Lots of performance all the way through, as evident by her WW & YW EPDs. Her mating to Hook's Eagle should be spot on. She had a 110 WW ratio.

151

152 ES G55

REG#3623267 • BD: 3/12/19 • **Homo Black Homo Polled Purebred**

Adj BW	Adj WW
62	503

CE	BW	WW	YW	ADG	MCE	Milk	MWW	Stay	DOC	CW	YG	Marb	BF	REA	API	TI
15	-9	70	108	.24	6	24	59	19	9.6	29.5	-.35	.05	-.065	.86	138	75
10	10							15							25	

Remington Lock N Load 54U
ES EX75-1
ES X75
KS Black Diamond W992
ES Z80
ES W46

This female brings together two of our top donors. On the top side is the X75 cow, big, powerful, excellent feet and udder, check out the X75 bulls in the red bull division and the bottom has the W46 donor...just a truck, look up her two upgrade bulls in the sale. The G55 heifer was fun to have in the picture pen, always gave us the look. The mating options are unlimited on a heifer like this.



152

153 ES G49

CE	BW	WW	YW	ADG	MCE	Milk	MWW	Stay	DOC	CW	YG	Marb	BF	REA	API	TI
17	-3.1	72	118	.29	8	21	57	14	6.6	37.6	-.08	.22	.006	.67	134	78
10	10			30	30					35						

REG#3623261
BD: 3/11/19

Homo Black
Homo Polled
1/2 SM 1/2 AN

Adj BW	Adj WW
69	568

W/C United 956Y

ES Z3

TNT Tuition U238

Miss Werning 956W

GDAR Game Day 449

ES X48

AI Sire: TJ Frosty 318E on 5/14/20 • Due 2/20/21

Est PM EPDs: 15 -2.9 83 127 .28 7 26 68 15 12.15

Carcass: 41.5 -.14 .22 -.03 .66 139 84

Pasture Sire: CCR Wichita 4069D from 6/26 to 7/20/20

When we have a mating that clicks, we tend to stay the course. United X Z3 is one of those matings, a full brother is in Kansas at Cow Camp and a full sister was our high selling bred several years ago going to Benda Simmentals. Her mating to TJ Frosty has phenotype all over it.



ES DZ3, Full Brother to Lot 153



153

ES B9, Full Sister to Lot 153

154 ES G17

CE	BW	WW	YW	ADG	MCE	Milk	MWW	Stay	DOC	CW	YG	Marb	BF	REA	API	TI
13	-8	69	103	.21	6	23	58	17	13.2	29.6	-.33	.50	-.061	.80	146	81
35	30							20	35		20	20	25	25	20	35

REG#3623221
BD: 2/15/19

Homo Black
Homo Polled
1/2 SM 1/2 AN

Adj BW	Adj WW
76	519

CCR Boulder 1339A

ES E35

Hoover Dam

CCR Ms. L Taylor 1339Y

TJ Main Event 503B

ES X64

AI Sire: TJ Flat Iron 259G on 6/17/20 • Due 3/26/21

Est PM EPDs: 17 -1.85 67 108 .26 9 30 64 17 11.05

Carcass: 28.25 -.18 .60 -.03 .60 159 84

Pasture Sire: CCR Wichita 4069D from 6/26 to 7/20/20

Typical of the Boulder cattle, just nice mid-range that look like they will withstand the test of time. A-I bred to Flat Iron, he came recommended as a must use sire in the spring and summer of 2020. With his awesome BW & CE #'s, we felt he was a legitimate candidate for heifers.



154

155 ES G91REG#3623304 • BD: 3/21/19 • **Homo Black Baldy Homo Polled 5/8 SM 3/8 AN**

CE	BW	WW	YW	ADG	MCE	Milk	MWW	Stay	DOC	CW	YG	Marb	BF	REA	API	TI
7	1.7	95	138	.27	0	27	75	16	13.9	44.1	-.26	.20	-.051	.86	124	85
		3	10			15	3	35	25	20			35	20		20



Adj BW	Adj WW
94	540

ACW Ironhide 395Y
 TJ Frosty 318E
 TJ 58B
 ES Power Up XS37
 ES Z81
 ES W17

Baldy lovers, these TJ Frosty breds are just what we expected after seeing how the bulls developed last spring. The progeny is very consistent being deep sided and square made. They were crowd favorites.

156 ES G64

CE	BW	WW	YW	ADG	MCE	Milk	MWW	Stay	DOC	CW	YG	Marb	BF	REA	API	TI
10	-.2	80	112	.20	5	25	65	18	13.6	36.0	-.31	-.01	-.085	.64	118	73
		30				30	25	15	30		25		10			

REG#3623276
 BD: 3/14/19

**Homo Black Baldy
 Hetero Polled
 1/2 SM 1/2 AN**

Adj BW	Adj WW
77	526

TJ Frosty 318E
 ACW Ironhide 395Y
 TJ 58B
 ES W41
 O C C Paxton 730P
 ESR31

AI Sire: TJ Flat Iron 259G on 5/14/20 • Due 2/20/21
 Est PM EPDs: 15 -1.5 72 112 .25 9 31 67 17 11.25
 Carcass: 31.45 -.17 .35 -.04 .52 146 80
 Pasture Sire: CCR Wichita 4069D from 6/26 to 7/20/20

This TJ Frosty daughter is a 1/2 sister to the Frosty bulls we had in last year's sale that were so well received. Exemplifies the same characteristics being big topped and lots of rear end. Her 12-year-old dam has had a lot of top end bulls over the years. One of only 4 heifers in the offering caring the service of TJ Flat Iron.

**157 ES G133**

CE	BW	WW	YW	ADG	MCE	Milk	MWW	Stay	DOC	CW	YG	Marb	BF	REA	API	TI
9	3.0	87	131	.28	3	21	64	18	9.8	31.7	-.33	.35	-.051	.92	134	82
		15	20	35			30	15			20		35	10		30

REG#3623196
 BD: 4/29/19

**Hetero Black
 Homo Polled
 3/4 SM 1/4 AN**

Adj BW	Adj WW
93	608

ES DY15
 CDI Authority 77X
 ES Y15
 W/C Miss Werning 4101B
 W/C Wide Track 694Y
 Nardelli Rita 610

AI Sire: ES Statement GZ33 on 5/7/20 • Due 2/13/21
 Est PM EPDs: 11 2.35 94 142 .30 5 24 71 17 11.15
 Carcass: 41.05 -.38 .38 -.08 1.00 154 93
 Pasture Sire: CCR Wichita 4069D from 6/26 to 7/20/20

A little different twist here having Authority in a black pedigree. To make it even more interesting, she is bred to ES Statement, a hetero black bull who was our high seller last year purchased by Windy Creek.



158 ES G56

CE	BW	WW	YW	ADG	MCE	Milk	MWW	Stay	DOC	CW	YG	Marb	BF	REA	API	TI
11	1.6	97	159	.39	6	21	70	16	18.2	62.9	-.15	.27	-.024	.97	136	88
		2	1	1			10		2	1				10	35	10

REG#3623268
BD: 3/12/19

Homo Black
Homo Polled
1/2 SM 1/2 AN

Adj BW	Adj WW
94	648

JK High Point 745

ES B72

AI Sire: TJ Gold 274G on 5/13/20 • Due 2/19/21

Est PM EPDs: 13 .30 95 152 .36 7 25 72 17 17.1

Carcass: 47.6 -.21 .34 -.03 .87 148 91

Pasture Sire: CCR Wichita 4069D from 6/26 to 7/20/20

I just wanted to show the crew over at JK Angus what can happen when you cross their Angus with a Simmy! And WHAMO, she's good!! Her sire was JK's high selling bull going to Bruns Angus several years ago, JK High Point. If you like them big & bold, she's the one. The pot of gold may be her calf by TJ Gold, the highly touted son of Eagle that sold last spring.



158

The Red Heads

159 ES G172

REG#3623224 • BD: 2/13/19 • **Red Homo Polled 5/8 SM 5/16 AR 1/16 AN**

CE	BW	WW	YW	ADG	MCE	Milk	MWW	Stay	DOC	CW	YG	Marb	BF	REA	API	TI
7	3.9	85	135	.31	0	23	66	9	13.2	32.8	-.15	.12	-.024	.60	101	74
		15	15	20			25		35							

Adj BW	Adj WW
103	520

Hooks Trinity 9T
Leachman Cadillac L025A
Rempe Stabilizer YD032
NF Trump S582
ES X75
EST311

What a pair of heifers these two are. They combine the power and phenotype of our X75 donor and the curve bending genetics of Cadillac. The X75 cow is 11 years old now and is still as athletic as a 1st calf heifer. We had 5 full sisters in the replacement pen, the hard part was deciding which 2 to put in the sale. As a testimony to their type and kind, Paul & Adam talked me into letting them take a full sister to the BHSS, stay tuned, we'll let you know how she did. Where the rubber really meets the road is in the bull division, their full brothers, lots 68, 69 & 70, they are as consistent and powerful as any flush mate brothers, red or black, we have every offered. They are worth finding in the pens. The deciding factor between the 2 may be finding their baby calf along side sale day and choosing which one fits your program the best.

Full Sisters



159

160 ES G174

CE	BW	WW	YW	ADG	MCE	Milk	MWW	Stay	DOC	CW	YG	Marb	BF	REA	API	TI
7	2.6	76	121	.28	0	23	61	8	11.6	34.8	-.21	.13	-.031	.75	96	70
				35										35		

REG#3623226
BD: 2/8/19

Red
Homo Polled
5/8 SM 5/16 AR
1/16 AN

Adj BW	Adj WW
107	649

Leachman Cadillac L025A

ES X75

LOT 160A: BLACK HEIFER CALF AT SIDE

Sire: ES Statement GZ33 • BD: 2/6/21 • BW: 65

Est EPDs: 10 2.15 89 136 .30 4 25 69 12 12.05

Carcass: 42.6 -.32 .27 -.07 .91 124 83

Hooks Trinity 9T
Rempe Stabilizer YD032
NF Trump S582
EST311



160

161 ES G177

REG#3623229 • BD: 2/13/19 • Red Homo Polled Purebred

Adj BW	Adj WW
104	608

CE	BW	WW	YW	ADG	MCE	Milk	MWW	Stay	DOC	CW	YG	Marb	BF	REA	API	TI
5	3.4	91	142	.32	3	27	72	17	12.4	48.4	-.50	.47	-.101	1.29	146	93
		10	5	10		25	10		35	4	15	4	20	2	15	4



AI Sire: Bridle Bit Best Man F839 on 5/14/20 • Due 2/20/21
 Est PM EPDs: 9 1.6 79 124 .28 4 22 62 17 10.35
 Carcass: 40.05 -.41 .34 -.09 1.00 146 84
 Pasture Sire: CCR Wichita 4069D from 6/26 to 7/20/20

CDI Hometown 246A
 CDI Abundance 391C
 CDI Ms. Beef King 74Z
 Remington Lock N Load 54U
 ES B34
 ES X75

It's easy to see that this heifer is related to ES G172, Lot 159 and ES G174, Lot 160 with X75 on the bottom side. There was a pair of full brothers to ES G177 that were power houses in last year's bull sale, not to mention there are some B34 sons that will be headlining the red division again this year. She is the only Abundance female in the sale, he's a bull we used several years ago and was a sire group the commercial cattleman fell in love with. First off it was a fresh pedigree but mainly it was the added performance Abundance brought to the table.



ES GB34-2, Full Brother to Lot 161

162 ES G50

CE	BW	WW	YW	ADG	MCE	Milk	MWW	Stay	DOC	CW	YG	Marb	BF	REA	API	TI
8	3.3	96	147	.32	5	27	75	19	14.0	38.9	-.27	.34	-.040	.92	138	88
		2	4	15		20	3	10	25	30				10	30	15

REG#3623262
 BD: 3/11/19

Red
 Homo Polled
 5/8 SM 1/4 AR 1/8 AN

Adj BW	Adj WW
92	617

GW Major Move 590E

ES A74

GW Movin On 183C
 GW Miss Predestined 147Y
 WS Beef King W107
 EIR T225

LOT 162A: HEIFER CALF AT SIDE

Sire: Leachman Cadillac L125A • BD: 2/5/21 • BW: 80
 Est EPDs: 11 .75 86 135 .31 5 27 70 13 15.5
 Carcass: 37.3 -.17 .31 -.02 .76 130 84



Here's a red heifer a lot of folds will find...heck, I even found her. She's the type to raise herd bulls. She's thick, sound, and had a WW ratio of 114. Her dam, A74, has had several bulls in past bull sales. There's a lot of things that can happen owning a female like this and I believe they are all good.

163 ES G47

CE	BW	WW	YW	ADG	MCE	Milk	MWW	Stay	DOC	CW	YG	Marb	BF	REA	API	TI
11	-1.6	57	91	.22	7	18	46	13	9.2	19.6	-.23	.28	-.059	.38	120	68
		20												35		

REG#3623259
 BD: 3/10/19

Red
 Homo Polled
 1/2 SM 1/2 AR

Adj BW	Adj WW
77	490

TNT Red Eye A212

EIR X229

DCR Mr. Moon Shine X102
 TNT Miss Y32
 OHRR Dakota Copper 29K
 EIR M211

AI Sire: Bridle Bit Best Man F839 on 5/6/20 • Due 2/12/21
 Est PM EPDs: 12 -.9 62 98 .23 6 18 49 15 8.75
 Carcass: 25.65 -.28 .25 -.07 .54 127 69
 Pasture Sire: CCR Wichita 4069D from 6/26 to 7/20/20



Here's a female that offers some fresh genetics into a red program. Her Bridle Bit Best Man calf will be an outcross from most red genetics. The G47 heifer is easy to like, her maternal sister sold to Tyler Andernacht in last year's sale.

164 ES G62REG#3623274 • BD: 3/14/19 • **Red Hetero Polled Purebred**

Adj BW	Adj WW
70	519

CE	BW	WW	YW	ADG	MCE	Milk	MWW	Stay	DOC	CW	YG	Marb	BF	REA	API	TI
14	.2	66	95	.18	2	22	56	17	10.8	25.5	-.44	.00	-.070	1.04	125	70
15	25															20

NF Trump S582
 CDI Authority 77X
 CDI Ms. Crocket 88T
 Remington Lock N Load 54U
 ES Z44
 ESU86

This marks the 4th heifer out of Z44 X Authority. SK Cattle purchased one in 2018 for \$9,000 and another one Adam showed ended up in our donor pen. I'd say some of the guess work is taken care of. Before she's done, I believe this female will write her own chapter as a daughter of Z44.



ES D84, Full Sister
to Lot 164

**164****165 ES G126**REG#3623189
BD: 4/21/19

Red
Homo Polled
3/4 SM 1/4 AR

Adj BW	Adj WW
86	599

WS All Aboard B80

ES D70

WS All-Around Z35

WS Little Sister

CDI Authority 77X

EIR X225

AI Sire: ES Statement HZ33 on 5/16/20 • Due 2/22/21

Est PM EPDs: 11 1.9 96 147 .32 5 23 71 14 12.95

Carcass: 44.75 -.40 .31 -.09 1.04 146 94

Pasture Sire: CCR Wichita 4069D from 6/26 to 7/20/20

Nice looking attractive red head here. There is nothing new about this pedigree at ES. All Aboard x Authority X RA, it's a combination that works time after time. We will know by sale day whether her calf is red or black out of the hetero black bull, ES Statement.

**165****166 ES G67**REG#3623279
BD: 3/14/19

Red
Homo Polled
1/2 SM 1/2 AR

Adj BW	Adj WW
74	520

WS All Aboard B80

EIR T212

WS All-Around Z35

WS Little Sister

Glacier Chateau 744

EIR P211

AI Sire: Bridle Bit Best Man F839 on 5/14/20 • Due 2/20/21

Est PM EPDs: 13 -1.65 69 107 .24 7 21 56 15 12.7

Carcass: 32.85 -.28 .37 -.05 .75 138 78

Pasture Sire: CCR Wichita 4069D from 6/26 to 7/20/20

Her dam, T212, is the widest based, most powerful Red Angus cow we have ever had. She's 14 years old and going to calve again this spring. There's a lot of value in longevity, help yourself here.

**166**

**167 ES G101**

CE	BW	WW	YW	ADG	MCE	Milk	MWW	Stay	DOC	CW	YG	Marb	BF	REA	API	TI
12	1.0	79	124	.28	8	20	60	17	12.2	22.8	-.26	.01	-.042	.66	119	72
		35	35	35	25			25								

REG#3623164
BD: 3/31/19

Red
Homo Polled
3/4 SM 1/4 AN

Adj BW	Adj WW
77	543

TJ Power Grid 363Y S A V Net Worth 4200

ES A33 TJ 15T
Remington Lock N Load 54U
ES W28

AI Sire: Colorado Bridle Bit E752 on 5/14/20 • Due 2/20/21
Est PM EPDs: 17 -1.5 74 110 .23 10 20 57 16 13.65
Carcass: 32.75 -.35 .15 -.07 .69 134 75
Pasture Sire: CCR Wichita 4069D from 6/26 to 7/20/20

A mid-sized Power Grid daughter out of a red Lock N Load that has a WW ratio of 103 on five calves. Bred to the calving ease bull owned by Mike Traxinger, Colorado Bridle Bit.

168 EIR G207

REG#4151378 • BD: 4/4/19 • Purebred Red Angus

Adj BW	Adj WW
92	575

CE	BW	WW	YW	Milk	Stay	MA	RE	BF
7	2.3	61	105	24	17	.04	.13	.02
			28		24			

Red Angus Females



Red Soo Line Power Eye 161X
KJHT Power take Off
SRA Paintbucket
Red 6 Mile Full Throttle 171T
EIR X224
EIR L201

Her sire, PTO, has been one of the crowd favorites over at CGS, the bull stud in Mitchell, SD. I looked deep into the AI tank last spring and found a unit of Milk Creek Cub to breed her to. I thought, why not, he's an older bull that we always liked the calves, the bulls were bulls, and the heifers were in the replacement pen. We may only have 3 red angus heifers in the sale, but we happen to think they are dang good.

AI Sire: MLK CRK Cub 722 on 5/14/20 • Due 2/20/21
Est PM EPDs: 7 .4 60 99 23 17
Carcass: .12 -.03 .00
Pasture Sire: CCR Wichita 4069D from 6/26 to 7/20/20

169 EIR G205

REG#4151374 • BD: 3/18/19 • Purebred Red Angus

CE	BW	WW	YW	Milk	Stay	MA	RE	BF
11	-7	82	131	30	12	.58	.51	.04
		1	2	12		15	2	

Bieber Rouse Samurai X22
Bieber Spartacus A193
Bieber Tilly 233U
Messmer Packer S008
EIR B212
EIR T202

We really like the bottom side of this pedigree, her dam, B212, was a favorite when she was a bred heifer. As expected, her 1st bull calf was our high selling red angus bull that year and if you have followed our program any at all over the years, her granddam, T202, has been the mainstay of our red angus cows. No matter what we flushed her to we had many sons and daughters highlight past production sales. If you're looking for some fresh genetics her Jose Cuervo calf could be the answer.



EIR DB212, Maternal Brother to Lot 169



169

Adj BW	Adj WW
93	645

AI Sire: HP Jose Cuervo 005 on 5/14/20 • Due 2/20/21
Est PM EPDs: 9 -1.4 65 103 30 11
Carcass: .37 .06 .03
Pasture Sire: CCR Wichita 4069D from 6/26 to 7/20/20

170 EIR G204

REG#4151364 • BD: 3/14/19 • Purebred Red Angus

CE	BW	WW	YW	Milk	Stay	MA	RE	BF
11	-2.4	66	103	27	12	.53	.11	.03
		26	32	31		22		

Bieber Rouse Samurai X22
Bieber Spartacus A193
Bieber Tilly 233U
Badlands Net Worth 23U
EIR Y219
EIR K221

This girl's grandam is a Glacier Marias cow we were always immensely proud of. The kind that would put a bull in the picture pen. Her sire, Spartacus, has produced many sale highlights in the Bieber program the past few years. Bred to Atomic, the sire of our high selling Red Angus bull last spring.



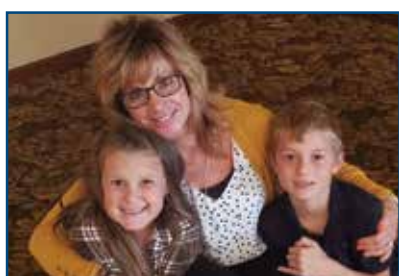
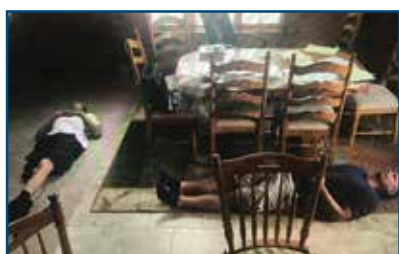
170

Adj BW	Adj WW
70	510

AI Sire: Bieber CL Atomic C218 on 5/14/20 • Due 2/20/21
Est PM EPDs: 15 -3.5 67 113 27 14
Carcass: .55 .07 .02
Pasture Sire: CCR Wichita 4069D from 6/26 to 7/20/20



Mother-son asparagus picking team!!!





LIVE BIDDING AT
DVAuction
Broadcasting Real-Time Auctions

VIDEO AUCTION ON ALL CATTLE!

- No cattle will go through a sale ring •

**WE LOOK FORWARD TO
SEEING YOU AT OUR
SALE ON MARCH 5!**

2020 DAKOTAFEST
WOMAN FARMER
RANCHER OF THE YEAR



Eberspacher
ENTERPRISES INC.
2904 Co Rd 6, Marshall, MN 56258

First Class Mail: Time Dated Material!

Presorted
First Class
US Postage
PAID
SlateGroup



E Eichacker Simmentals *And* *K* Angus



Bull & Female Sale

JOIN US! FRIDAY, MARCH 5TH • 1:00 PM
AT THE EICHACKER SIMMENTAL FARM • SALEM, SD

2 0 2 1