

DISPERSAL SALE

Corman *Simmentals & SimAngus*



Complete & Final

WEDNESDAY, APRIL 9, 2025

12:00 NOON • MANKATO LIVESTOCK AUCTION MARKET, MANKATO, KANSAS

Corman Simmentals & Sim Angus Dispersal

Corman Simmentals & Sim Angus



Richard and Mary Alice Corman have raised cattle since 1976. True to Richard's

interest and education in animal science, he studied genetics for Simmental cattle and integrated tracking of EPDs (Expected Progency Differences) for each animal and later, \$ indexes. Eventually Richard and Mary Alice integrated Angus into their herd, in response to demands of the market. He developed his herd's genetics to market seed stock cattle with the following traits: Calving ease—easy on the calf, the cow and you; Medium growth—pounds still add up to the biggest paycheck; Maternal calving ease—daughters that calve easy and have average milk, make the best replacements; Carcass yield and grade—qualifies for market grid premiums; Black color—Certified Angus Beef potential premium; and Disposition—tame cattle keep everyone smiling.



The couple sold bulls and heifers with proven genetics for herd building for 48 years. In 1998, they hosted their first open house and production sale on the farm. In what became an annual sale, Richard promoted and explained the value of using EPDs and \$ indexes. He enjoyed mentoring young farmers and ranchers, especially those interested in cattle. As age and tough winter weather made preparation for March sale dates more challenging, they moved their annual Sim-Angus production sale to Mankato, KS starting in 2021.



Richard and Mary Alice ensured their three children were involved in raising and showing cattle. Children Angie, Crystal, and Kelly showed cattle each summer at the Nuckolls County

Fair and as teenagers at the Nebraska State Fair and Nebraska Junior Simmental Association events. Richard was also active in the Nebraska Simmental Association and Nebraska Cattlemen's Classic. After the kids outgrew 4-H in 2002, he continued showing cattle in the Nebraska and Kansas State Fairs (open class), the American Royal, and the Cattlemen's Classic. He was known for his docile animals and ability to break yearling bulls to tie and lead in preparation for Bulls on Main Street and Husker Harvest Days.

Richard battled Parkinson's disease for at least ten years. The disease limited his flexibility and mobility, but the physical activities involved in farming and ranching kept him moving and strong. He and the family were and continue to be grateful for hired hands to work alongside Richard on day-to-day farm operations over the years. On July 12, 2024 Richard passed away at the age of 75.

As a family, we joked that dad knew all the cattle by ear tag number and mom knew them all by name. They had different approaches, but both loved raising cattle. Unfortunately Mary Alice is unable to continue caring for the herd as she is currently fighting pancreatic cancer and undergoing chemotherapy, both of which have taken a toll on her body. Children Angie, Crystal, and Kelly are unable to take on the cattle operation.

We hope this dispersal sale extends our parents' legacy of excellent cattle to other ranchers, their families, and the cattle industry. We are proud of these cattle and the hard work and dedication put into shaping this Corman Simmental and Sim Angus herd.

Welcome to the Corman Simmentals & Sim Angus Complete Dispersal Sale, which celebrates Richard and Mary Alice's 48 years in the seed stock business.

It is exciting to be part of history-making times in the beef business as all facets of this industry are seeing unprecedented prices, from the purebred breeder to the feeder calf producer to harvest prices at the livestock market. The quality of our product is unmatched, and demand is high. With that being said, the way to reap the benefits down the road is to own the factory today. This is the perfect time to freshen up the gene pool in your operation by adding productive cattle with the genetic merit to back it up.

The Corman Simmentals & Sim Angus cattle fit the mold that tells you they are tried-true genetics with a long family tree, an impressive EPD profile, and a docile emphasis. This is quite a herd of cattle, from open heifers and bulls to the hard-working mama cows. We feel confident that any of these individuals will move easily into your operation. American Simmental Association just launched two new EPDs, DMI EPD expressed as the difference in pounds of daily dry matter intake and \$Gain expressed as the difference in daily profitability of animals in the feedlot based on their combination of DMI and ADG EPD. The Corman cattle excel well in these new EPD categories.

Please accept this as your personal invitation to celebrate with the Corman family for their numerous years in business and add Corman genetics to your operation. Feel free to reach out to us if you have any questions or need assistance in your selections; our phone is always open. Come early to enjoy the tradition of Corman Simmental Annual Sale Cowboy Beans!

Sincerely,

Val & Lori Eberspacher

Val & Lori Eberspacher, Eberspacher Enterprises Inc



CORMAN SIMMENTALS & SIMANGUS

Family Contact: Crystal Corman 202-999-0922
2129 Rd 4400, Edgar NE 68935



SALE MANAGED BY:

EBERSPACHER ENTERPRISES INC.

Val & Lori Eberspacher 507-532-6694

Val's Cell 612-805-7405

sales@ebersale.com

CATALOG AND VIDEOS ONLINE AT WWW.EBERSALE.COM

SALE INFORMATION

WEDNESDAY, APRIL 9, 2025

12:00 Noon • Sale held at the Mankato Livestock Auction Market

810 N. Commercial, Mankato, Kansas • Phone 785-378-3283 • Neil Bouray 402-879-5566

Cattle Viewing:

Cattle may be viewed at the farm April 1-7, 2025
Contact Colton Lowery 402-364-3392.
Farm address: 2129 Rd 4400, Edgar NE 68935

Sale Schedule:

TUESDAY, APRIL 8, 2025

Cattle viewing at Sale Barn in the afternoon

WEDNESDAY, APRIL 9, 2025

8:00 AM Viewing of Cattle

11:00 AM Serving Lunch with Corman Cowboy Beans!

12:00 Noon Corman Simmental Complete Dispersal

All cattle must be loaded out sale day unless prior arrangements have been made.

Sale Order & Updates: Additional information and sale order can be found on the Eberspacher Enterprises website or Facebook page. Download the EE smart phone APP for all current sale information! Updated calf information will be available the day ahead of the sale.

Announcements: Announcements made sale day and from the auction block during the sale take precedence over printed material associated with this sale. Anyone attending this sale attends at their own risk. Breeder or any of sales force will not be held responsible for any personal injury for attending this sale.

Insurance: Available through sale management sale day.

EPDs: EPDs listed are BOLT 3-12-25 numbers. Please note EPDs may change from the time sale catalog is printed until registration papers are transferred.

Trucking: Breeder and sales force will assist buyers in coordinating and making the most economical trucking arrangements possible. For long distance trucking: Craig Kaisand 641-891-9666 or Dick Coleman 765-461-0954.

Marketing Representatives:

- Val Eberspacher, EE Sales612-805-7405
- Jason Hanson, Livestock Digital.....402-649-0500
- Neil Bouray, Mankato Livestock.....402-879-5566
- Tim Uden402-462-0260
- Amanda Hilbrands, LiveAuctions.tv507-828-7089
- Tracy Harl, Auctioneer402-469-3852
- Cyrstal Corman, Corman Family Contact.....202-999-0922

Sale Day Phones:

Val Eberspacher 612-805-7405

Neil Bouray 402-879-5566

Tracy Harl 402-469-3852



Corman ANNUAL SALE COWBOY BEANS Simmentals & Sim Angus

- 1 pound ground beef
- 1 pound bacon, cut into bite size pieces
- 1/2 cup chopped onion
- 1 15 oz. can kidney beans, drained
- 2 15 oz. cans pork n beans, drained
- 1 15 oz. can butter beans, drained
- 1 cup brown sugar
- 1/2 cup sugar
- 1 cup catsup
- 2 teaspoons dry mustard
- 1 teaspoon salt
- 1 tablespoon vinegar

Combine the ground beef, bacon and onion in a skillet. Cook until the ground beef is crumbly and no pink remains and the bacon is cooked through, stirring constantly; drain well. Add all the beans; mix well. Add the brown sugar, sugar, catsup, dry mustard, salt and vinegar; mix well. Pour into a slow cooker. Cook on Low for several hours.



TECHNICAL SUPPORT:
682.816.4900
TechSupport@LiveAuctions.tv

THIS IS A DISPERSAL SALE – ALL SALES ARE FINAL.

YEARLING HERD BULL PROSPECTS AND PROVEN HERD SIRES

Bull buyers, as you view this offering, you will find a set of true performance-orientated individuals raised on Nebraska grass and weaned off their mothers to continue developing into a stout offering as yearling bulls. Check out their EPD profile. If you need a strong aged bull, the herd sires are time-tested and have proven why they are still in the herd. All yearling bulls born unassisted. *All bulls have been semen checked and ready for service.*



1 CS472 Merlin

ASA#(4458399) • BD: 1/30/24 • Tattoo: 472M

ADJ BW 92
• BW Ratio 108
ADJ WW 703
• WW Ratio 120
ADJ YW 1210
• YW Ratio 110

HOMO BLACK POLLED 5/8 SM 3/8 AN BULL
Apex Proclamation AC457G WS Proclamation E202
CS104 Jinger Apex Fran WA457C
 CS806F Fiscal Asset
 CS956 Ginger

CE	BW	WW	YW	ADG	DMI	MCE	MILK	MWW	STAY
15	0.9	99	154	0.34	1.35	8	20	70	14
DOC	CW	YG	MARB	BF	REA	SF	\$GN	API	TI
12.6	46.9	-0.10	0.47	-0.010	0.72	-0.30	0.064	148	95



2 CS473 Monte Cristo

ASA#(4458433) • BD: 1/31/24 • Tattoo: 473M

ADJ BW 98
• BW Ratio 115
ADJ WW 626
• WW Ratio 107
ADJ YW 1057
• YW Ratio 96

HOMO BLACK POLLED 3/4 SM 1/4 AN BULL
Apex Proclamation AC457G WS Proclamation E202
CS406B Brenda Apex Fran WA457C
 Nichols Manifest Z179
 CS911W Winifred

CE	BW	WW	YW	ADG	DMI	MCE	MILK	MWW	STAY
13	1.9	82	132	0.31	1.01	7	22	63	18
DOC	CW	YG	MARB	BF	REA	SF	\$GN	API	TI
10.1	49.0	-0.08	0.39	-0.016	0.65		0.064	139	82

3 CS467 Mr Right

ASA#(4458445) • BD: 1/26/24 • Tattoo: 467M

ADJ BW 88
• BW Ratio 104
ADJ WW 704
• WW Ratio 120
ADJ YW 1169
• YW Ratio 106

HOMO BLACK POLLED 3/4 SM 1/4 AN BULL
Apex Proclamation AC457G WS Proclamation E202
Apex Fran WA457C
CS834F Firstinclass CS640D Destiny
CS614D Daisy

CE	BW	WW	YW	ADG	DMI	MCE	MILK	MWW	STAY
15	0.3	90	136	0.29	1.14	8	26	71	16
DOC	CW	YG	MARB	BF	REA	SF	\$GN	API	TI
10.8	39.3	-0.13	0.51	-0.028	0.57		0.034	150	92



4 CS464 Matrix

ASA#(4458413) • BD: 1/19/24 • Tattoo: 464M

ADJ BW 91
• BW Ratio 107
ADJ WW 697
• WW Ratio 119
ADJ YW 1107
• YW Ratio 101

HOMO BLACK POLLED 5/8 SM 3/8 AN BULL
Apex Proclamation AC457G WS Proclamation E202
Apex Fran WA457C
Apex Lori PC253E ES Treasury CW90
Apex Lori P253C

CE	BW	WW	YW	ADG	DMI	MCE	MILK	MWW	STAY
14	1.4	94	141	0.29	1.05	8	21	68	13
DOC	CW	YG	MARB	BF	REA	SF	\$GN	API	TI
10.6	41.7	-0.08	0.47	-0.014	0.58	-0.21	0.044	140	91



5 CS468 Moxie

ASA#(4458394) • BD: 1/27/24 • Tattoo: 468M

ADJ BW 92
• BW Ratio 108
ADJ WW N/A
• WW Ratio
ADJ YW N/A
• YW Ratio

HOMO BLACK POLLED 1/2 SM 1/2 AN BULL
Apex Proclamation AC457G WS Proclamation E202
Apex Fran WA457C
CS510C Cheyenne CS101Y Yankee
SRH Lead On 920

CE	BW	WW	YW	ADG	DMI	MCE	MILK	MWW	STAY
13	2.2	85	135	0.32		7	16	58	13
DOC	CW	YG	MARB	BF	REA	SF	\$GN	API	TI
9.9	51.4	-0.03	0.67	-0.012	0.54			145	89



6 CS474 Maui

ASA#(4458441) • BD: 2/4/24 • Tattoo: 474M

ADJ BW 98
• BW Ratio 115
ADJ WW 540
• WW Ratio 92
ADJ YW 1036
• YW Ratio 94

HOMO BLACK POLLED 5/8 SM 3/8 AN BULL
Apex Proclamation AC457G WS Proclamation E202
Apex Fran WA457C
CS808F Fame CS634 Divineintervention
CS412B Bethany

CE	BW	WW	YW	ADG	DMI	MCE	MILK	MWW	STAY
11	2.7	83	135	0.33	0.99	6	17	58	15
DOC	CW	YG	MARB	BF	REA	SF	\$GN	API	TI
10.9	47.3	-0.06	0.57	-0.015	0.55	-0.22	0.074	142	85

7 CS422 Marvel

ASA#(4458407) • BD: 3/17/24 • Tattoo: 422M

ADJ BW 86
• BW Ratio 101
ADJ WW 540
• WW Ratio 92
ADJ YW 1121
• YW Ratio 102

BLACK POLLED 3/8 SM 5/8 AN BULL
CS160 Jackpot RM Regulator 7202
DMGC Ms Ntl 315A
CS143 Jewel CS806F Fiscal Asset
J Miss Manor 9078

CE	BW	WW	YW	ADG	DMI	MCE	MILK	MWW	STAY
15	-1.6	66	108	0.26	0.75	8	18	53	14
DOC	CW	YG	MARB	BF	REA	SF	\$GN	API	TI
14.2	34.0	-0.02	0.49	-0.002	0.37		0.074	138	77



8 CS404 Millionaire

ASA#(4458434) • BD: 3/8/24 • Tattoo: 404M

ADJ BW 85	HOMO BLACK POLLED 1/2 SM 1/2 AN BULL
• BW Ratio 100	CS266kicksonroute66
ADJ WW 565	RM Regulator 7202
• WW Ratio 96	CS605D Diamond
ADJ YW 1133	Apex Dividend C765F
• YW Ratio 103	CS281 Kiki
	CS839F Felicity

CE	BW	WW	YW	ADG	DMI	MCE	MILK	MWW	STAY
13	-0.2	76	129	0.33	1.15	8	22	60	13
DOC	CW	YG	MARB	BF	REA	SF	\$GN	API	TI
13.6	44.2	-0.10	0.59	-0.028	0.55		0.094	143	87



9 CS406 Maestro

ASA#(4458424) • BD: 3/12/24 • Tattoo: 406M

ADJ BW 96	HOMO BLACK POLLED 3/4 SM 1/4 AN BULL
• BW Ratio 113	FF CB 1316 J1210
ADJ WW 684	FF Cowboy Cut E1316
• WW Ratio 117	FF Ms Infocus Z1015
ADJ YW 1248	CCR Wide Range 9005A
• YW Ratio 113	CS956 Ginger
	DMGC Ms Ntl 315A

CE	BW	WW	YW	ADG	DMI	MCE	MILK	MWW	STAY
12	1.4	94	140	0.29	1.05	8	26	72	18
DOC	CW	YG	MARB	BF	REA	SF	\$GN	API	TI
13.8	31.6	-0.21	0.31	-0.029	0.71		0.044	139	88



10 CS429 Magnificent

ASA#(4458409) • BD: 3/19/24 • Tattoo: 429M

ADJ BW 92	HOMO BLACK POLLED 5/8 SM 3/8 AN BULL
• BW Ratio 108	CS2002 Husker Pride
ADJ WW 614	Apex Gold Strike U716E
• WW Ratio 105	CS406B Brenda
ADJ YW 1256	Apex Proclamation AC457G
• YW Ratio 114	CS138 Joy
	CS509C Cloud 9

CE	BW	WW	YW	ADG	DMI	MCE	MILK	MWW	STAY
13	0.8	78	123	0.28	0.81	7	18	57	19
DOC	CW	YG	MARB	BF	REA	SF	\$GN	API	TI
12.9	41.4	-0.03	0.40	0.004	0.55		0.064	141	80

11 CS423 Magic

ASA#(4458400) • BD: 3/17/24 • Tattoo: 423M

ADJ BW 80	BLACK POLLED 1/2 SM 1/2 AN BULL
• BW Ratio 94	CS160 Jackpot
ADJ WW 514	RM Regulator 7202
• WW Ratio 88	DMGC Ms Ntl 315A
ADJ YW 929	Apex Gold Strike U716E
• YW Ratio 84	CS2004 Hailey
	CS213 Zulu

CE	BW	WW	YW	ADG	DMI	MCE	MILK	MWW	STAY
16	-2.1	59	92	0.21	0.44	10	16	46	15
DOC	CW	YG	MARB	BF	REA	SF	\$GN	API	TI
12.8	25.2	-0.08	0.44	-0.002	0.44	-0.36	0.054	139	74

12 CS426 Mojo

ASA#(4458437) • BD: 3/18/24 • Tattoo: 426M

ADJ BW 85	HOMO BLACK POLLED 5/8 SM 3/8 AN BULL
• BW Ratio 100	CS266kicksonroute66
ADJ WW 495	RM Regulator 7202
• WW Ratio 84	CS605D Diamond
ADJ YW 1030	Apex Dividend C765F
• YW Ratio 94	CS298 Karolina
	CS614D Daisy

CE	BW	WW	YW	ADG	DMI	MCE	MILK	MWW	STAY
13	-0.5	71	119	0.30	0.85	8	21	57	13
DOC	CW	YG	MARB	BF	REA	SF	\$GN	API	TI
13.1	37.4	-0.14	0.56	-0.040	0.49		0.104	141	83

13

CS430 Mighty

ASA#(4458436) • BD: 3/19/24 • Tattoo: 430M

ADJ BW 58
• BW Ratio 68
ADJ WW 588
• WW Ratio 100
ADJ YW 1032
• YW Ratio 94

HOMO BLACK POLLED 1/2 SM 1/2 AN BULL
HSF Frosty 99Z 128H TJ Frosty 318E
HSF Ms Biz 15X 99Z
CS2033 Honor RM Regulator 7202
CS623D Duchess

CE	BW	WW	YW	ADG	DMI	MCE	MILK	MWW	STAY
20	-5.7	71	105	0.21	0.59	13	25	61	18
DOC	CW	YG	MARB	BF	REA	SF	\$GN	API	TI
13.6	37.0	-0.15	0.44	-0.015	0.71	-0.33	0.044	158	87



14

CS431 Midnight

ASA#(4458417) • BD: 3/19/24 • Tattoo: 431M

ADJ BW 97
• BW Ratio 114
ADJ WW 663
• WW Ratio 113
ADJ YW 1304
• YW Ratio 118

HOMO BLACK POLLED 1/2 SM 1/2 AN BULL
FF CB 1316 J1210 FF Cowboy Cut E1316
FF Ms Infocus Z1015
CS2049 Honesty RM Regulator 7202
CS626D Desire

CE	BW	WW	YW	ADG	DMI	MCE	MILK	MWW	STAY
11	1.2	83	125	0.26	1.01	7	29	71	17
DOC	CW	YG	MARB	BF	REA	SF	\$GN	API	TI
12.9	36.0	-0.05	0.53	-0.013	0.39		0.034	143	87



15

CS433 Mohawk

ASA#(4458392) • BD: 3/26/24 • Tattoo: 433M

ADJ BW 89
• BW Ratio 105
ADJ WW 575
• WW Ratio 98
ADJ YW 1145
• YW Ratio 104

HOMO BLACK POLLED 5/8 SM 3/8 AN BULL
CS2002 Husker Pride Apex Gold Strike U716E
CS406B Brenda
CS513C Cha-Ching CS133Y Yahoo
CS904W Wendy

CE	BW	WW	YW	ADG	DMI	MCE	MILK	MWW	STAY
13	-0.7	58	89	0.19	0.29	8	24	53	20
DOC	CW	YG	MARB	BF	REA	SF	\$GN	API	TI
12.7	28.2	-0.13	0.36	-0.026	0.44		0.034	136	70



16

CS432 Maddox

ASA#(4458411) • BD: 3/20/24 • Tattoo: 432M

ADJ BW 66
• BW Ratio 78
ADJ WW 598
• WW Ratio 102
ADJ YW 1077
• YW Ratio 98

BLACK POLLED 5/8 SM 3/8 AN BULL
CS160 Jackpot RM Regulator 7202
DMGC Ms Ntl 315A
CS133 June Apex Proclamation AC457G
Apex Glenda WA106E

CE	BW	WW	YW	ADG	DMI	MCE	MILK	MWW	STAY
18	-3.4	67	106	0.24	0.67	10	19	53	15
DOC	CW	YG	MARB	BF	REA	SF	\$GN	API	TI
12.5	35.8	-0.08	0.46	-0.014	0.50		0.084	147	81

17

CS436 Move Over

ASA#(4458446) • BD: 4/1/24 • Tattoo: 436M

ADJ BW 59
• BW Ratio 69
ADJ WW 565
• WW Ratio 96
ADJ YW 1071
• YW Ratio 97

HOMO BLACK POLLED 5/8 SM 3/8 AN BULL
CS266kicksonroute66 RM Regulator 7202
CS605D Diamond
CS252 Kokey Apex Dividend C765F
DMGC Ms ER 042X

CE	BW	WW	YW	ADG	DMI	MCE	MILK	MWW	STAY
16	-3.6	71	116	0.28	0.87	9	21	57	12
DOC	CW	YG	MARB	BF	REA	SF	\$GN	API	TI
12.8	39.6	-0.18	0.53	-0.047	0.58		0.084	146	86



18 CS437 Muse

ASA#(4458442) • BD: 4/1/24 • Tattoo: 437M

ADJ BW	84	HOMO BLACK BALDY POLLED 1/2 SM 1/2 AN BULL
• BW Ratio	99	HSF Frosty 99Z 128H
ADJ WW	682	TJ Frosty 318E
• WW Ratio	116	HSF Ms Biz 15X 99Z
ADJ YW	1182	CS2041 Harmony
• YW Ratio	107	RM Regulator 720Z
		CS426B Belinda

CE	BW	WW	YW	ADG	DMI	MCE	MILK	MWW	STAY
14	-2.0	76	107	0.19	0.59	9	26	64	17
DOC	CW	YG	MARB	BF	REA	SF	\$GN	API	TI
12.9	34.2	-0.13	0.40	-0.011	0.65		0.004	144	83

MATURE HERD BULLS



19 HSF Frosty 99Z 128H

ASA#3901113 • BD: 9/19/20 • Tattoo: 128H

ADJ BW	83	HOMO BLACK HOMO POLLED 1/2 SM 1/2 AN BULL
• BW Ratio	101	TJ Frosty 318E
ADJ WW	564	ACW Ironhide 395Y
• WW Ratio	118	TJ 58B
ADJ YW	N/A	HSF Ms Biz 15X 99Z
• YW Ratio		S A V Bismarck 5682
		HSF Miss SF 137R 115X

CE	BW	WW	YW	ADG	DMI	MCE	MILK	MWW	STAY
18	-3.8	86	121	0.22	0.60	10	24	67	21
DOC	CW	YG	MARB	BF	REA	SF	\$GN	API	TI
14.8	38.7	-0.19	0.36	-0.015	0.85	-0.32	0.024	161	91

20 CS160 Jackpot

ASA#3978417 • BD: 6/28/21 • Tattoo: 160J

ADJ BW	80	HOMO BLACK POLLED 1/2 SM 1/2 AN BULL
• BW Ratio	92	RM Regulator 720Z
ADJ WW	593	Connealy Regulator
• WW Ratio	83	PA Hazel 1261-344
ADJ YW	N/A	DMGC Ms Ntl 315A
• YW Ratio		TJ New Time Line 113X
		DMGC Ms SB Of 219M 905W

CE	BW	WW	YW	ADG	DMI	MCE	MILK	MWW	STAY
17	-2.9	55	89	0.21	0.44	10	19	47	14
DOC	CW	YG	MARB	BF	REA	SF	\$GN	API	TI
14.5	26.0	-0.06	0.47	-0.002	0.40	-0.39	0.094	139	74

21 CS266kicksonroute66

ASA#4141571 • BD: 3/3/22 • Tattoo: 266K

ADJ BW	73	HOMO BLACK POLLED 1/4 SM 3/4 AN BULL
• BW Ratio	85	RM Regulator 720Z
ADJ WW	796	Connealy Regulator
• WW Ratio	115	PA Hazel 1261-344
ADJ YW	1414	CS605D Diamond
• YW Ratio	115	IR Expedition Z673
		SRH Lead On 920

CE	BW	WW	YW	ADG	DMI	MCE	MILK	MWW	STAY
15	-1.4	72	127	0.35	1.34	10	28	65	10
DOC	CW	YG	MARB	BF	REA	SF	\$GN	API	TI
13.3	51.0	-0.03	0.80	-0.017	0.49	-0.26	0.104	150	90

22 HSF Honor 7729 90K

ASA#4211855 • BD: 9/2/22 • Tattoo: 90K

ADJ BW	80	HOMO BLACK HOMO POLLED 1/2 SM 1/2 AN BULL
• BW Ratio	100	KBHR Honor H060
ADJ WW	579	Hook's Beacon 56B
• WW Ratio	119	WS Miss Sugar C4
ADJ YW	1040	Burgmans Evereldaentense7729
• YW Ratio	110	K C F Bennett Absolute
		Burgmans Susanna 7495

CE	BW	WW	YW	ADG	DMI	MCE	MILK	MWW	STAY
14	-1.7	78	129	0.32	1.29	7	29	68	17
DOC	CW	YG	MARB	BF	REA	SF	\$GN	API	TI
8.1	49.0	-0.12	0.63	-0.014	0.78	-0.34	0.044	159	91

23 CS353 Luxury Model

ASA#(4297617) • BD: 4/26/23 • Tattoo: 353L

ADJ BW	87	HOMO BLACK POLLED 3/4 SM 1/4 AN BULL
• BW Ratio	103	FF CB 1316 J1210
ADJ WW	672	FF Cowboy Cut E1316
• WW Ratio	112	FF Ms Infocus Z1015
ADJ YW	1197	CS626D Desire
• YW Ratio	106	IR Expedition Z673
		CS911W Winifred

CE	BW	WW	YW	ADG	DMI	MCE	MILK	MWW	STAY
14	-0.6	78	116	0.23	0.81	9	30	69	19
DOC	CW	YG	MARB	BF	REA	SF	\$GN	API	TI
12.2	27.5	-0.11	0.42	-0.031	0.35		0.014	147	84

24 FF CB 1316 J1210

ASA#3922507 • BD: 3/5/21 • Tattoo: J1210

ADJ BW 81
• BW Ratio 101
ADJ WW 850
• WW Ratio 113
ADJ YW N/A
• YW Ratio

HOMO BLACK BALDY POLLED 1/2 SM 1/2 AN BULL

FF Cowboy Cut E1316

CCR Cowboy Cut 5048Z

FF Ms Infocus Z1015

FF Ms Right Answer A1116

Mytty In Focus

FF Ms Payoff X075

CE	BW	WW	YW	ADG	DMI	MCE	MILK	MWW	STAY
12	0.4	87	124	0.23	0.96	8	33	77	19
DOC	CW	YG	MARB	BF	REA	SF	\$GN	API	TI
14.0	27.5	-0.07	0.55	-0.020	0.29		0.014	151	91



25 CS342 Lodestone

ASA#(4297632) • BD: 4/4/23 • Tattoo: 342L

ADJ BW 94
• BW Ratio 111
ADJ WW 578
• WW Ratio 97
ADJ YW 1056
• YW Ratio 94

HETERO BLACK POLLED 3/8 SM 1/2 HP 1/8 AN BULL

Frenzen Fahrenheit E59

Bar JZ Fahrenheit 603Y

Frenzen Lady Queen B90

CS961 Garnet

CCR Wide Range 9005A

CS605D Diamond

CE	BW	WW	YW	ADG	DMI	MCE	MILK	MWW	STAY
14	1.4	60	90	0.19	0.49	7	12	42	9
DOC	CW	YG	MARB	BF	REA	SF	\$GN	API	TI
12.3	-1.6	-0.34	0.11	-0.056	0.48		0.034	97	60

STOUT OPEN HEIFER CALVES



The cowboys looking for attractive breeders, here you go! The young ladies are impressive with their size and elegance, along with an excellent set of EPDs. There is something for everyone-if it is power you need, there are exceptional choices to add a punch to your herd to produce calves that will push the scales down. The future for this set of young females is very bright. All yearling heifers born unassisted.

26 CS461 Miracle

ASA#(4458393) • BD: 1/11/24 • Tattoo: 461M

ADJ BW 79
• BW Ratio 98
ADJ WW 565
• WW Ratio 105
ADJ YW N/A
• YW Ratio

HOMO BLACK POLLED 5/8 SM 3/8 AN COW

Apex Proclamation AC457G

WS Proclamation E202

Apex Fran WA457C

CS715E Egypt

Cast Cain 501C

CS525C Chandelier

CE	BW	WW	YW	ADG	DMI	MCE	MILK	MWW	STAY
13	1.2	83	128	0.28	0.78	7	24	64	17
DOC	CW	YG	MARB	BF	REA	SF	\$GN	API	TI
14.2	34.7	-0.09	0.60	-0.008	0.56	-0.23	0.064	151	89



27 CS469 Mademoiselle

ASA#(4491592) • BD: 1/27/24 • Tattoo: 469M

ADJ BW 94
• BW Ratio
ADJ WW 609
• WW Ratio
ADJ YW N/A
• YW Ratio

HOMO BLACK POLLED 5/8 SM 3/8 AN COW
Apex Proclamation AC457G
CS716E Emelyn

WS Proclamation E202
Apex Fran WA457C
IR Expedition Z673
802U Unity

CE	BW	WW	YW	ADG	DMI	MCE	MILK	MWW	STAY
10	3.7	94	150	0.35	1.24	5	20	67	13
DOC	CW	YG	MARB	BF	REA	SF	\$GN	API	TI
10.7	48.0	-0.11	0.64	-0.033	0.58	-0.25	0.064	141	93



28 CS463 Marguerite

ASA#(4458420) • BD: 1/17/24 • Tattoo: 463M

ADJ BW 86
• BW Ratio
ADJ WW 649
• WW Ratio
ADJ YW N/A
• YW Ratio

HOMO BLACK POLLED 1/2 SM 1/2 AN COW
Apex Proclamation AC457G
CS605D Diamond

WS Proclamation E202
Apex Fran WA457C
IR Expedition Z673
SRH Lead On 920

CE	BW	WW	YW	ADG	DMI	MCE	MILK	MWW	STAY
13	2.5	93	154	0.38	1.63	8	24	71	13
DOC	CW	YG	MARB	BF	REA	SF	\$GN	API	TI
12.1	52.2	-0.06	0.75	-0.023	0.56	-0.20	0.064	153	98



29 CS466 Mckenna

ASA#(4458401) • BD: 1/24/24 • Tattoo: 466M

ADJ BW 76
• BW Ratio
ADJ WW 600
• WW Ratio
ADJ YW N/A
• YW Ratio

HOMO BLACK POLLED 5/8 SM 3/8 AN COW
Apex Proclamation AC457G
CS526C Constance

WS Proclamation E202
Apex Fran WA457C
IR Expedition Z673
CS907wonderwoman

CE	BW	WW	YW	ADG	DMI	MCE	MILK	MWW	STAY
15	-1.0	78	126	0.30	0.97	8	20	59	14
DOC	CW	YG	MARB	BF	REA	SF	\$GN	API	TI
9.2	35.9	-0.01	0.68	-0.009	0.31	-0.25	0.064	153	90



30 CS471 Made Ya Look

ASA#(4458405) • BD: 1/28/24 • Tattoo: 471M

ADJ BW 92
• BW Ratio
ADJ WW 644
• WW Ratio
ADJ YW N/A
• YW Ratio

HOMO BLACK POLLED 5/8 SM 5/16 AN 1/16 CS COW
Apex Proclamation AC457G
CS2008 Haviland

WS Proclamation E202
Apex Fran WA457C
Apex MasterLink C104F
Apex Catalina YB495E

CE	BW	WW	YW	ADG	DMI	MCE	MILK	MWW	STAY
12	3.1	97	150	0.33	1.16	6	22	70	13
DOC	CW	YG	MARB	BF	REA	SF	\$GN	API	TI
11.0	47.1	-0.11	0.47	-0.023	0.63	-0.20	0.064	137	91

31

CS401 Maya

ASA#(4458403) • BD: 2/8/24 • Tattoo: 401M

ADJ BW 80
• BW Ratio 100
ADJ WW 633
• WW Ratio 118
ADJ YW N/A
• YW Ratio

HOMO BLACK POLLED 5/8 SM 3/8 AN COW

Apex Proclamation AC457G WS Proclamation E202
Apex Fran WA457C
CS706E Essence Hook's Beacon 56B
CS526C Constance

CE	BW	WW	YW	ADG	DMI	MCE	MILK	MWW	STAY
15	-1.2	85	132	0.29	1.16	8	20	62	15
DOC	CW	YG	MARB	BF	REA	SF	\$GN	API	TI
9.6	44.5	-0.07	0.72	-0.005	0.64	-0.29	0.024	162	96



32

CS470 Miranda

ASA#(4458432) • BD: 1/28/24 • Tattoo: 470M

ADJ BW 88
• BW Ratio 109
ADJ WW 646
• WW Ratio 121
ADJ YW N/A
• YW Ratio

HOMO BLACK POLLED 5/8 SM 3/8 AN COW

Apex Proclamation AC457G WS Proclamation E202
Apex Fran WA457C
CS839F Felicity CS634 Divineintervention
CS501C Coral

CE	BW	WW	YW	ADG	DMI	MCE	MILK	MWW	STAY
12	3.0	95	153	0.36	1.45	7	20	67	14
DOC	CW	YG	MARB	BF	REA	SF	\$GN	API	TI
11.8	51.8	-0.08	0.55	-0.013	0.71	-0.22	0.064	143	92



33

CS475 Megan

ASA#(4458419) • BD: 2/5/24 • Tattoo: 475M

ADJ BW 98
• BW Ratio 122
ADJ WW 562
• WW Ratio 105
ADJ YW N/A
• YW Ratio

HOMO BLACK POLLED 1/2 SM 1/2 AN COW

Apex Proclamation AC457G WS Proclamation E202
Apex Fran WA457C
CS2051 Heaven Sent RM Regulator 7202
CS716E Emelyn

CE	BW	WW	YW	ADG	DMI	MCE	MILK	MWW	STAY
11	2.4	87	142	0.34	1.23	6	19	63	11
DOC	CW	YG	MARB	BF	REA	SF	\$GN	API	TI
11.4	48.2	-0.01	0.67	-0.005	0.51	-0.25	0.084	141	91



34

CS421 Marvelous

ASA#(4462447) • BD: 3/16/24 • Tattoo: 421M

ADJ BW 91
• BW Ratio 102
ADJ WW 456
• WW Ratio 105
ADJ YW 822
• YW Ratio

HOMO BLACK POLLED 5/8 SM 3/8 AN COW

CS266kicksonroute66 RM Regulator 7202
CS605D Diamond
CS276 Kissy Apex Dividend C765F
CS825F French Kiss

CE	BW	WW	YW	ADG	DMI	MCE	MILK	MWW	STAY
11	0.9	74	121	0.30	0.85	7	20	57	14
DOC	CW	YG	MARB	BF	REA	SF	\$GN	API	TI
14.3	37.5	-0.11	0.54	-0.034	0.45		0.084	138	82

35

CS424 Mollie

ASA#(4458444) • BD: 3/18/24 • Tattoo: 424M

ADJ BW 89
• BW Ratio 111
ADJ WW 549
• WW Ratio 102
ADJ YW 1035
• YW Ratio

HOMO BLACK POLLED 1/2 SM 1/2 AN COW

CS266kicksonroute66 RM Regulator 7202
CS605D Diamond
CS279 Koleen Apex Proclamation AC457G
CS426B Belinda

CE	BW	WW	YW	ADG	DMI	MCE	MILK	MWW	STAY
12	0.8	74	122	0.30	1.01	7	24	62	12
DOC	CW	YG	MARB	BF	REA	SF	\$GN	API	TI
11.6	41.0	-0.06	0.60	-0.015	0.47		0.064	138	84



36

CS402 Matilda

ASA#(4458416) • BD: 2/26/24 • Tattoo: 402M

ADJ BW 84
• BW Ratio 104
ADJ WW 466
• WW Ratio 87
ADJ YW 1107
• YW Ratio 104

HOMO BLACK POLLED 3/8 SM 5/8 AN COW
CS266kicksonroute66 RM Regulator 7202
CS605D Diamond
CS259 Kismet CS2002 Husker Pride
CS2051 Heaven Sent

CE	BW	WW	YW	ADG	DMI	MCE	MILK	MWW	STAY
14	-1.2	67	115	0.30	0.96	9	23	57	12
DOC	CW	YG	MARB	BF	REA	SF	\$GN	API	TI
12.6	44.0	-0.05	0.65	-0.017	0.48		0.084	141	82



37

CS405 Millie

ASA#(4458421) • BD: 3/8/24 • Tattoo: 405M

ADJ BW 73
• BW Ratio 91
ADJ WW 555
• WW Ratio 104
ADJ YW N/A
• YW Ratio

HOMO BLACK POLLED 3/4 SM 1/4 AN COW
CS160 Jackpot RM Regulator 7202
DMGC Ms Ntl 315A
CS2058 Heidi Apex MasterLink C104F
CS1017X Xtra Fine

CE	BW	WW	YW	ADG	DMI	MCE	MILK	MWW	STAY
16	-2.0	64	98	0.22	0.49	9	26	58	16
DOC	CW	YG	MARB	BF	REA	SF	\$GN	API	TI
12.2	25.2	-0.20	0.39	-0.044	0.48		0.074	140	77



38

CS407 Moana

ASA#(4458398) • BD: 3/13/24 • Tattoo: 407M

ADJ BW 86
• BW Ratio 107
ADJ WW 451
• WW Ratio 84
ADJ YW 984
• YW Ratio 93

BLACK POLLED 1/2 SM 1/2 AN COW
CS160 Jackpot RM Regulator 7202
DMGC Ms Ntl 315A
CS213 Zulu White Star 263X W21
CS443P Pussy Willow

CE	BW	WW	YW	ADG	DMI	MCE	MILK	MWW	STAY
13	0.0	61	98	0.23	0.47	8	16	46	14
DOC	CW	YG	MARB	BF	REA	SF	\$GN	API	TI
11.0	26.6	-0.15	0.35	-0.023	0.51		0.064	125	70

39

CS408 Mercedes

ASA#(4458430) • BD: 3/20/24 • Tattoo: 408M

ADJ BW 83
• BW Ratio 103
ADJ WW 432
• WW Ratio 81
ADJ YW 923
• YW Ratio 87

HOMO BLACK POLLED 3/4 SM 1/4 AN COW
HSF Frosty 99Z 128H TJ Frosty 318E
HSF Ms Biz 15X 99Z
CS410B Bella Nichols Manifest Z179
CS1007X X-Tra Good

CE	BW	WW	YW	ADG	DMI	MCE	MILK	MWW	STAY
14	-1.2	69	107	0.24	0.42	8	22	57	22
DOC	CW	YG	MARB	BF	REA	SF	\$GN	API	TI
13.1	33.0	-0.19	0.31	-0.041	0.58		0.064	145	76

40

CS409 Mercy Me

ASA#(4458402) • BD: 3/20/24 • Tattoo: 409M

ADJ BW 85
• BW Ratio 106
ADJ WW 539
• WW Ratio 101
ADJ YW 1046
• YW Ratio 98

BLACK POLLED 5/8 SM 11/32 AN 1/32 CS COW
CS2002 Husker Pride Apex Gold Strike U716E
CS406B Brenda
Apex Glenda WA106E TJ High Calibre 556B
Apex Glenda W106A

CE	BW	WW	YW	ADG	DMI	MCE	MILK	MWW	STAY
13	-0.4	70	110	0.25	0.60	7	20	55	21
DOC	CW	YG	MARB	BF	REA	SF	\$GN	API	TI
11.0	41.9	-0.17	0.27	-0.038	0.65	-0.19	0.054	138	74

41 CS425 Miss Congeniality

ASA#(4458435) • BD: 3/18/24 • Tattoo: 425M

ADJ BW 84
• BW Ratio 104
ADJ WW 495
• WW Ratio 92
ADJ YW 1142
• YW Ratio 107

BLACK POLLED 1/2 SM 1/2 AN COW
CS266kicksonroute66 RM Regulator 7202
CS605D Diamond
CS282 Kassandra Apex Dividend C765F
CS980 Glenda

CE	BW	WW	YW	ADG	DMI	MCE	MILK	MWW	STAY
12	-0.5	76	126	0.31	0.88	8	19	58	13
DOC	CW	YG	MARB	BF	REA	SF	\$GN	API	TI
13.0	43.6	-0.10	0.59	-0.026	0.56		0.084	143	87



42 CS427 Maria

ASA#(4458414) • BD: 3/19/24 • Tattoo: 427M

ADJ BW 74
• BW Ratio 92
ADJ WW 541
• WW Ratio 101
ADJ YW 1078
• YW Ratio 101

BLACK POLLED 5/8 SM 3/8 AN COW
CS160 Jackpot RM Regulator 7202
DMGC Ms Ntl 315A
CS118 Jolee CS806F Fiscal Asset
CS980 Glenda

CE	BW	WW	YW	ADG	DMI	MCE	MILK	MWW	STAY
15	-2.1	68	109	0.26	0.76	9	19	53	15
DOC	CW	YG	MARB	BF	REA	SF	\$GN	API	TI
14.2	32.6	-0.12	0.43	-0.021	0.52		0.084	141	80



43 CS428 Moira

ASA#(4458418) • BD: 3/19/24 • Tattoo: 428M

ADJ BW 74
• BW Ratio 92
ADJ WW 524
• WW Ratio 98
ADJ YW 997
• YW Ratio 94

HOMO BLACK POLLED 5/8 SM 3/8 AN COW
CS2002 Husker Pride Apex Gold Strike U716E
CS406B Brenda
CS902 Grace CLRS Dividend 405D
Apex Lori PC253E

CE	BW	WW	YW	ADG	DMI	MCE	MILK	MWW	STAY
16	-3.1	66	101	0.22	0.46	8	20	53	19
DOC	CW	YG	MARB	BF	REA	SF	\$GN	API	TI
11.8	30.7	-0.15	0.25	-0.029	0.52	-0.30	0.054	140	75



44 CS411 Margo

ASA#(4458425) • BD: 4/9/24 • Tattoo: 411M

ADJ BW 66
• BW Ratio 82
ADJ WW 492
• WW Ratio 92
ADJ YW 1064
• YW Ratio 100

HOMO BLACK POLLED 1/2 SM 1/2 AN COW
CS160 Jackpot RM Regulator 7202
DMGC Ms Ntl 315A
CS957 Gretchen Tehama Tahoe B767
CS412B Bethany

CE	BW	WW	YW	ADG	DMI	MCE	MILK	MWW	STAY
17	-3.7	64	106	0.26	0.78	10	23	55	17
DOC	CW	YG	MARB	BF	REA	SF	\$GN	API	TI
13.5	37.6	-0.04	0.52	-0.007	0.44		0.094	154	82

45 CS439 Mimi

ASA#(4458428) • BD: 4/6/24 • Tattoo: 439M

ADJ BW 69
• BW Ratio 86
ADJ WW 474
• WW Ratio 88
ADJ YW 859
• YW Ratio 81

HOMO BLACK POLLED 3/4 SM 1/4 AN COW
CS2002 Husker Pride Apex Gold Strike U716E
CS406B Brenda
CS623D Duchess IR Expedition Z673
CS942W Warranty

CE	BW	WW	YW	ADG	DMI	MCE	MILK	MWW	STAY
16	-3.6	57	89	0.20	0.24	10	21	49	17
DOC	CW	YG	MARB	BF	REA	SF	\$GN	API	TI
11.7	29.3	-0.20	0.28	-0.035	0.62	-0.30	0.054	136	71



46 CS410 Mylynn

ASA#(4458423) • BD: 3/23/24 • Tattoo: 410M

ADJ BW 83
• BW Ratio 103
ADJ WW 576
• WW Ratio 107
ADJ YW 1083
• YW Ratio 102

HOMO BLACK BALDY POLLED 3/4 SM 1/4 AN COW
HSF Frosty 99Z 128H TJ Frosty 318E
HSF Ms Biz 15X 99Z
CS426B Belinda Nichols Manifest Z179
CS 136L Lynn

CE	BW	WW	YW	ADG	DMI	MCE	MILK	MWW	STAY
13	-1.4	71	99	0.18	0.38	7	24	60	21
DOC	CW	YG	MARB	BF	REA	SF	\$GN	API	TI
11.8	27.0	-0.21	0.25	-0.030	0.65		0.004	137	76



47 CS434 Marigold

ASA#(4458440) • BD: 3/30/24 • Tattoo: 434M

ADJ BW 93
• BW Ratio 116
ADJ WW 547
• WW Ratio 102
ADJ YW 1005
• YW Ratio 95

HOMO BLACK POLLED 5/8 SM 3/8 AN COW
CS160 Jackpot RM Regulator 7202
DMGC Ms Ntl 315A
CS961 Garnet CCR Wide Range 9005A
CS605D Diamond

CE	BW	WW	YW	ADG	DMI	MCE	MILK	MWW	STAY
13	0.9	74	122	0.30	0.89	8	18	56	14
DOC	CW	YG	MARB	BF	REA	SF	\$GN	API	TI
13.5	33.5	-0.19	0.44	-0.027	0.69	-0.36	0.094	134	80

48 CS440 Mama Mia

ASA#(4458395) • BD: 4/10/24 • Tattoo: 440M

ADJ BW 90
• BW Ratio 112
ADJ WW 428
• WW Ratio 80
ADJ YW 1043
• YW Ratio 98

BLACK POLLED 3/4 SM 1/4 AN COW
CS289 Kingsbury Apex Dividend C765F
Apex Remi UC444E
CS112 Jolly Good Apex Dividend C765F
CS410B Bella

CE	BW	WW	YW	ADG	DMI	MCE	MILK	MWW	STAY
10	1.4	76	123	0.29	0.57	5	12	51	16
DOC	CW	YG	MARB	BF	REA	SF	\$GN	API	TI
13.3	32.6	-0.19	0.37	-0.048	0.52		0.084	131	78

49 CS441 Maeve

ASA#(4458443) • BD: 4/26/24 • Tattoo: 441M

ADJ BW 86
• BW Ratio 107
ADJ WW 495
• WW Ratio 92
ADJ YW N/A
• YW Ratio

BLACK POLLED 3/4 SM 1/4 AN COW
CS160 Jackpot RM Regulator 7202
DMGC Ms Ntl 315A
CS2044 Halo Apex MasterLink C104F
Apex Glenda WA106E

CE	BW	WW	YW	ADG	DMI	MCE	MILK	MWW	STAY
15	-1.1	61	98	0.24	0.45	9	21	52	16
DOC	CW	YG	MARB	BF	REA	SF	\$GN	API	TI
12.7	31.2	-0.17	0.41	-0.039	0.52		0.094	138	74

50 CS442 Mona Lisa

ASA#(4458427) • BD: 4/20/24 • Tattoo: 442M

ADJ BW 71
• BW Ratio 88
ADJ WW 503
• WW Ratio 94
ADJ YW N/A
• YW Ratio

HOMO BLACK POLLED 3/4 SM 1/4 AN COW
FF CB 1316 J1210 FF Cowboy Cut E1316
FF Ms Infocus Z1015
CS626D Desire IR Expedition Z673
CS911W Winifred

CE	BW	WW	YW	ADG	DMI	MCE	MILK	MWW	STAY
16	-2.7	69	103	0.21	0.67	10	30	64	19
DOC	CW	YG	MARB	BF	REA	SF	\$GN	API	TI
12.2	23.0	-0.11	0.42	-0.031	0.28		0.024	149	81

NEW DMI & \$GN Now Published On Every Animal

Two new trait predictions that empower producers to make informed decisions to select for animals that balance biological and economic efficiency by selecting for cattle that balance intake and growth for greater feedlot profitability.

DMI EPD: expressed as the difference in pounds of daily dry matter intake.

\$Gain EPD: expressed as the difference in daily profitability of animals in the feedlot based on their combination of DMI and ADG EPD.

By incorporating these trait predictions into selection strategies, seedstock and commercial producers alike can better optimize feedlot performance and feed intake goals.

Matriarchs of Corman Simmentals

Only in a Dispersal sale does a person have the opportunity to select females from the heart of the herd. This set of females has calf-raising machines, and as they graze the corn stakes with babies at their side, they are working hard to raise big calves. Reliable mama cows are the name of the game at Corman Simmental. Richard was a true scholar of science within the Simmental Breed, so these ladies carry impressive EPDs as well. The older females in the offering are tried and true and earned their right to walk the ground south of Edgar, NE by bringing home a coupon each year at weaning time.

2023 Models – Lots 51-61



51 CS316 Lydia

ASA#(4297591) • BD: 3/13/23 • Tattoo: 316L

ADJ BW 78
• BW Ratio 99
ADJ WW 500
• WW Ratio 92
ADJ YW 930
• YW Ratio 104

HOMO BLACK POLLED 5/8 SM 3/8 AN COW

Apex Proclamation AC457G WS Proclamation E202
Apex Fran WA457C
Hook's Beacon 56B
CS706E Essence CS526C Constance

CE	BW	WW	YW	ADG	DMI	MCE	MILK	MWW	STAY
14	-0.8	77	124	0.29	1.04	8	20	58	15
DOC	CW	YG	MARB	BF	REA	SF	\$GN	API	TI
9.6	39.7	-0.07	0.72	-0.005	0.56	-0.29	0.044	157	90

LOT 51A: Bull Calf • BD: 3/2/25 • BW: 100 • Sire: CS266kicksonroute66
Est Plan Mating EPDs: 15 -1.1 75 125 .32 9 24 61 13 11.5
Carcass: 45.4 -.05 .76 -.01 .53 -.28 155 90

52 CS301 Loretta Lynn

ASA#(4297628) • BD: 2/27/23 • Tattoo: 301L

ADJ BW 73
• BW Ratio 92
ADJ WW 611
• WW Ratio 113
ADJ YW 998
• YW Ratio 112

HOMO BLACK POLLED 3/4 SM 1/4 AN COW

HSF Frosty 99Z 128H TJ Frosty 318E
HSF Ms Biz 15X 99Z
CS406B Brenda Nichols Manifest Z179
CS911W Winifred

CE	BW	WW	YW	ADG	DMI	MCE	MILK	MWW	STAY
17	-2.0	79	120	0.26	0.78	9	26	65	22
DOC	CW	YG	MARB	BF	REA	SF	\$GN	API	TI
12.1	46.8	-0.20	0.24	-0.032	0.86		0.044	150	82

Pasture Sire: CS160 Jackpot from 5/15 to 11/4/24
Est Plan Mating EPDs: 17 -2.5 67 105 .24 10 22 56 18 13.3
Carcass: 36.4 -.13 .36 -.02 .63 149 79

53 CS304 Lady Liberty

ASA#(4297633) • BD: 3/5/23 • Tattoo: 304L

ADJ BW 80
• BW Ratio 101
ADJ WW 539
• WW Ratio 99
ADJ YW 827
• YW Ratio 93

HOMO BLACK POLLED 5/8 SM 3/8 AN COW

FF CB 1316 J1210 FF Cowboy Cut E1316
FF Ms Infocus Z1015
CS808F Fame CS634 Divineintervention
CS412B Bethany

CE	BW	WW	YW	ADG	DMI	MCE	MILK	MWW	STAY
11	1.0	78	118	0.25	0.78	7	26	65	19
DOC	CW	YG	MARB	BF	REA	SF	\$GN	API	TI
12.5	34.3	-0.12	0.51	-0.033	0.43		0.034	145	84

LOT 53A: Heifer Calf • BD: 2/28/25 • BW: 72 • Sire: CS160 Jackpot
Est Plan Mating EPDs: 14 -1.0 67 104 .23 9 22 56 16 13.5
Carcass: 30.2 -.09 .49 -.02 .42 145 79



54 CS320 Lucy Lou

ASA#(4297589) • BD: 3/15/23 • Tattoo: 320L

ADJ BW 67 **HOMO BLACK POLLED 5/8 SM 3/8 AN COW**
 • BW Ratio 85
ADJ WW 544 CS806F Fiscal Asset Connealy Comrade 1385
 • WW Ratio 100 CS618D Delight
ADJ YW 987 CS526C Constance IR Expedition Z673
 • YW Ratio 111 CS907wwonderwoman

CE	BW	WW	YW	ADG	DMI	MCE	MILK	MWW	STAY
17	-3.6	68	112	0.28	0.89	8	25	60	14
DOC	CW	YG	MARB	BF	REA	SF	\$GN	API	TI
11.3	31.7	-0.10	0.60	-0.034	0.34	-0.31	0.064	154	86

LOT 54A: Bull Calf • BD: 2/23/25 • BW: 75 • Sire: CS266kicksonroute66
 Est Plan Mating EPDs: 16 -2.5 70 120 .32 9 27 62 12 12.3
 Carcass: 41.4 -.07 .70 -.03 .42 -.29 152 87

55 CS306 Lovable

ASA#(4297579) • BD: 3/5/23 • Tattoo: 306L

ADJ BW 82 **HOMO BLACK POLLED 1/2 SM 1/2 AN COW**
 • BW Ratio 104 HSF Frosty 99Z 128H TJ Frosty 318E
ADJ WW 587 CS101Y Yankee HSF Ms Biz 15X 99Z
 • WW Ratio 108 CS510C Cheyenne CS101Y Yankee
ADJ YW 928 SRH Lead On 920
 • YW Ratio 104

CE	BW	WW	YW	ADG	DMI	MCE	MILK	MWW	STAY
14	-0.1	83	125	0.26	0.96	8	20	62	17
DOC	CW	YG	MARB	BF	REA	SF	\$GN	API	TI
11.9	48.1	-0.15	0.52	-0.027	0.74		0.014	150	88

LOT 55A: Bull Calf • BD: 3/11/25 • BW: 73 • Sire: CS266kicksonroute66
 Est Plan Mating EPDs: 14 -.8 78 126 .31 9 24 63 14 12.6
 Carcass: 49.6 -.09 .66 -.02 .62 149 88

56 CS307 Luck Be A Lady

ASA#(4297615) • BD: 3/6/23 • Tattoo: 307L

ADJ BW 75 **HOMO BLACK POLLED 3/4 SM 1/4 AN COW**
 • BW Ratio 95 FF CB 1316 J1210 FF Cowboy Cut E1316
ADJ WW 558 FF Ms Infocus Z1015
 • WW Ratio 103 CCR Wide Range 9005A
ADJ YW 941 DMGC Ms Ntl 315A
 • YW Ratio 105

CE	BW	WW	YW	ADG	DMI	MCE	MILK	MWW	STAY
15	-0.2	86	131	0.28	0.97	9	26	69	18
DOC	CW	YG	MARB	BF	REA	SF	\$GN	API	TI
13.8	28.1	-0.20	0.31	-0.029	0.65		0.054	143	86

Pasture Sire: CS160 Jackpot from 5/15 to 11/4/24
 Est Plan Mating EPDs: 16 -1.6 71 110 .25 10 22 58 16 14.2
 Carcass: 27.1 -.13 .39 -.02 .53 145 80

57 CS319 Louisa May

ASA#(4297578) • BD: 3/14/23 • Tattoo: 319L

ADJ BW 77 **HOMO BLACK POLLED 5/8 SM 3/8 AN COW**
 • BW Ratio 97 FF CB 1316 J1210 FF Cowboy Cut E1316
ADJ WW 633 FF Ms Infocus Z1015
 • WW Ratio 117 CS715E Egypt Cast Cain 501C
ADJ YW 840 CS525C Chandelier
 • YW Ratio 94

CE	BW	WW	YW	ADG	DMI	MCE	MILK	MWW	STAY
13	0.0	78	108	0.19	0.48	8	32	71	20
DOC	CW	YG	MARB	BF	REA	SF	\$GN	API	TI
15.8	20.0	-0.16	0.55	-0.026	0.43		0.014	151	86

Pasture Sire: CS266kicksonroute66 from 5/16 to 11/4/24
 Est Plan Mating EPDs: 14 -.7 75 118 .27 9 30 68 15 14.6
 Carcass: 35.5 -.10 .68 -.02 .46 151 87

58 CS322 Love Me Tender

ASA#(4297592) • BD: 3/16/23 • Tattoo: 322L

ADJ BW 79 **HOMO BLACK POLLED 3/4 SM 1/4 AN COW**
 • BW Ratio 100 HSF Frosty 99Z 128H TJ Frosty 318E
ADJ WW 559 FF Ms Infocus Z1015
 • WW Ratio 103 CS707E Emerald IR Expedition Z673
ADJ YW 892 DMGC Ms Ntl 315A
 • YW Ratio 100

CE	BW	WW	YW	ADG	DMI	MCE	MILK	MWW	STAY
16	-0.2	86	129	0.27	0.64	9	19	62	18
DOC	CW	YG	MARB	BF	REA	SF	\$GN	API	TI
14.5	39.1	-0.23	0.30	-0.037	0.82	-0.38	0.064	142	85

Sells Open

59 CS324 Lily Of The Valley

ASA#(4297625) • BD: 3/16/23 • Tattoo: 324L

ADJ BW 84 **HOMO BLACK POLLED 5/8 SM 3/8 AN COW**
 • BW Ratio 106 CS806F Fiscal Asset Connealy Comrade 1385
ADJ WW 630 CS618D Delight
 • WW Ratio 116 CS839F Felicity CS634 Divineintervention
ADJ YW 1142 CS501C Coral
 • YW Ratio 128

CE	BW	WW	YW	ADG	DMI	MCE	MILK	MWW	STAY
13	0.9	88	148	0.37	1.49	7	26	70	15
DOC	CW	YG	MARB	BF	REA	SF	\$GN	API	TI
13.9	51.5	-0.17	0.46	-0.038	0.79	-0.28	0.074	144	90

LOT 59A: Bull Calf • BD: 2/20/25 • BW: 74 • Sire: CS266kicksonroute66
 Est Plan Mating EPDs: 14 -.3 80 137 .36 9 27 68 13 13.6
 Carcass: 51.3 -.10 .63 -.03 .64 -.27 148 89

LOT 60 is out of sale

LOT 60 is out of sale

Corman
 Simmentals & Sim Angus

THANK YOU
 for your support of the
 Richard & Mary Alice Corman Family

61

CS336 Lulu

ASA#(4297613) • BD: 3/28/23 • Tattoo: 336L

ADJ BW 60
• BW Ratio 76
ADJ WW 548
• WW Ratio 101
ADJ YW 829
• YW Ratio 93

HOMO BLACK POLLED 3/4 SM 1/4 AN COW

HSF Frosty 99Z 128H TJ Frosty 318E
HSF Ms Biz 15X 99Z
CS426B Belinda Nichols Manifest Z179
CS136L Lynn

CE	BW	WW	YW	ADG	DMI	MCE	MILK	MWW	STAY
16	-3.4	64	88	0.15	0.24	9	24	56	21
DOC	CW	YG	MARB	BF	REA	SF	\$GN	API	TI
11.8	22.5	-0.21	0.25	-0.030	0.60		-0.006	141	74

Pasture Sire: CS266kicksonroute66 from 5/16 to 11/4/24
Est Plan Mating EPDs: 15 -2.4 68 108 .25 10 26 61 15 12.6
Carcass: 36.8 -.12 .53 -.02 .55 148 82

2022 MODELS – LOTS 62-71



62

CS250 Kalpani

ASA#4141560 • BD: 7/26/22 • Tattoo: 250K

ADJ BW 76
• BW Ratio 96
ADJ WW 534
• WW Ratio 96
ADJ YW N/A
• YW Ratio

HOMO BLACK POLLED 5/8 SM 3/8 AN COW

CS806F Fiscal Asset Connealy Comrade 1385
CS618D Delight
CS2007 Hope Apex Gold Strike U716E
CS402B Belle

CE	BW	WW	YW	ADG	DMI	MCE	MILK	MWW	STAY
16	-2.5	66	97	0.19	0.57	8	22	56	15
DOC	CW	YG	MARB	BF	REA	SF	\$GN	API	TI
14.9	26.2	-0.13	0.47	-0.018	0.50	-0.23	0.004	143	80

LOT 62A: Bull Calf • BD: 2/19/25 • BW: 70 • Sire: HSF Frosty 99Z 128H
Est Plan Mating EPDs: 17 -3.2 76 109 .21 9 23 62 18 14.9
Carcass: 32.5 -.16 .42 -.02 .68 -.28 154 85

63

CS247 Klara

ASA#4141596 • BD: 6/26/22 • Tattoo: 247K

ADJ BW 78
• BW Ratio 98
ADJ WW 582
• WW Ratio 104
ADJ YW N/A
• YW Ratio

BLACK POLLED 3/4 SM 1/4 AN COW

CS2001 Home Run Apex Gold Strike U716E
CS704E Eve
AS Miss Tail Gater 08C SS/PRS Tail Gater 621Z
SS/PRS Black Jewel 833X

CE	BW	WW	YW	ADG	DMI	MCE	MILK	MWW	STAY
14	-0.5	74	107	0.21	0.58	7	19	56	17
DOC	CW	YG	MARB	BF	REA	SF	\$GN	API	TI
10.9	27.8	-0.23	0.07	-0.046	0.60	-0.38	0.014	122	72

Pasture Sire: HSF Honor 7729 90K from 5/18 to 11/4/24
Est Plan Mating EPDs: 14 -1.1 76 118 .27 7 24 62 17 9.5
Carcass: 38.4 -.18 .35 -.03 .69 -.36 147 83

64

CS259 Kismet

ASA#4141568 • BD: 2/26/22 • Tattoo: 259K

ADJ BW 65
• BW Ratio 82
ADJ WW 644
• WW Ratio 105
ADJ YW 1009
• YW Ratio 102

HOMO BLACK POLLED 1/2 SM 1/2 AN COW

CS2002 Husker Pride Apex Gold Strike U716E
CS406B Brenda
CS2051 Heaven Sent RM Regulator 7202
CS716E Emelyn

CE	BW	WW	YW	ADG	DMI	MCE	MILK	MWW	STAY
14	-1.9	69	112	0.27	0.85	8	18	52	14
DOC	CW	YG	MARB	BF	REA	SF	\$GN	API	TI
12.0	43.6	-0.08	0.49	-0.018	0.56		0.064	142	81

LOT 64A: Heifer Calf • BD: 3/2/25 • BW: 88 • Sire: CS160 Jackpot
Est Plan Mating EPDs: 16 -2.4 62 101 .24 9 18 50 14 13.3
Carcass: 34.8 -.07 .48 -.01 .48 141 76



65 CS252 Kokey

ASA#4141569 • BD: 2/23/22 • Tattoo: 252K

ADJ BW 74	HOMO BLACK POLLED PUREBRED SM COW
• BW Ratio 93	Apex Dividend C765F CLRS Dividend 405D
ADJ WW 635	Zeis Cowboy Cut C585
• WW Ratio 104	DMGC Ms ER 042X TNT Ever Ready R232
ADJ YW 1043	DMGC Ms RH Of R45 807U
• YW Ratio 105	

CE	BW	WW	YW	ADG	DMI	MCE	MILK	MWW	STAY
13	-0.5	80	121	0.25	0.53	5	14	54	13
DOC	CW	YG	MARB	BF	REA	SF	\$GN	API	TI
12.2	30.8	-0.33	0.26	-0.078	0.70	-0.37	0.064	139	85

LOT 65A: Baldy Bull Calf • BD: 2/28/25 • BW: 75 • Sire: HSF Frosty 99Z 128H
 Est Plan Mating EPDs: 16 -2.2 83 121 .24 7 19 61 17 13.5
 Carcass: 34.8 -.26 .31 -.05 .78 -.35 150 87

66 CS263 Kehlani

ASA#4141602 • BD: 3/3/22 • Tattoo: 263K

ADJ BW 80	HOMO BLACK POLLED PUREBRED SM COW
• BW Ratio 101	Apex Dividend C765F CLRS Dividend 405D
ADJ WW 680	Zeis Cowboy Cut C585
• WW Ratio 111	CS834F Firstclass CS640D Destiny
ADJ YW 1028	CS614D Daisy
• YW Ratio 104	

CE	BW	WW	YW	ADG	DMI	MCE	MILK	MWW	STAY
12	-0.2	80	120	0.25	0.76	7	21	61	17
DOC	CW	YG	MARB	BF	REA	SF	\$GN	API	TI
13.0	27.6	-0.23	0.35	-0.055	0.52	-0.30	0.044	149	87

Pasture Sire: HSF Frosty 99Z 128H from 5/9 to 11/4/24
 Est Plan Mating EPDs: 15 -2.0 83 121 .24 9 23 64 19 13.9
 Carcass: 33.2 -.21 .36 -.04 .69 -.31 154 87

67 CS265 Konstance

ASA#4141553 • BD: 3/3/22 • Tattoo: 265K

ADJ BW 79	HOMO BLACK POLLED 5/8 SM 3/8 AN COW
• BW Ratio 99	Apex Proclamation AC457G WS Proclamation E202
ADJ WW 677	Apex Fran WA457C
• WW Ratio 111	IR Expedition Z673
ADJ YW 1093	CS907wwonderwoman
• YW Ratio 111	

CE	BW	WW	YW	ADG	DMI	MCE	MILK	MWW	STAY
14	-0.5	81	131	0.31	1.01	8	18	58	14
DOC	CW	YG	MARB	BF	REA	SF	\$GN	API	TI
9.2	38.1	-0.01	0.68	-0.009	0.33	-0.24	0.064	152	91

Pasture Sire: HSF Frosty 99Z 128H from 5/9 to 11/4/24
 Est Plan Mating EPDs: 16 -2.2 84 126 .27 9 21 63 17 12.0
 Carcass: 38.4 -.10 .52 -.01 .59 -.28 160 91

68 CS276 Kissy

ASA#4141597 • BD: 3/10/22 • Tattoo: 276K

ADJ BW 76	HOMO BLACK POLLED PUREBRED SM COW
• BW Ratio 96	Apex Dividend C765F CLRS Dividend 405D
ADJ WW 632	Zeis Cowboy Cut C585
• WW Ratio 104	CS825F French Kiss Cast Cain 501C
ADJ YW 979	CS410B Bella
• YW Ratio 99	

CE	BW	WW	YW	ADG	DMI	MCE	MILK	MWW	STAY
9	1.6	81	123	0.26	0.65	5	12	52	18
DOC	CW	YG	MARB	BF	REA	SF	\$GN	API	TI
15.2	30.9	-0.20	0.29	-0.052	0.51	-0.38	0.044	142	82

LOT 68A: Heifer Calf • BD: 3/8/25 • BW: 74 • Sire: HSF Frosty 99Z 128H
 Est Plan Mating EPDs: 14 -1.1 84 122 .24 8 18 60 20 15.0
 Carcass: 34.8 -.20 .33 -.03 .68 -.35 152 86

69 CS279 Koleen

ASA#4141573 • BD: 3/11/22 • Tattoo: 279K

ADJ BW 82	HOMO BLACK POLLED 3/4 SM 1/4 AN COW
• BW Ratio 103	Apex Proclamation AC457G WS Proclamation E202
ADJ WW 577	Apex Fran WA457C
• WW Ratio 104	CS426B Belinda Nichols Manifest Z179
ADJ YW 973	CS 136L Lynn
• YW Ratio 98	

CE	BW	WW	YW	ADG	DMI	MCE	MILK	MWW	STAY
10	1.6	73	111	0.24	0.65	6	20	56	14
DOC	CW	YG	MARB	BF	REA	SF	\$GN	API	TI
9.8	30.2	-0.09	0.40	-0.014	0.44		0.034	125	76

LOT 69A: Bull Calf • BD: 2/26/25 • BW: 90 • Sire: HSF Frosty 99Z 128H
 Est Plan Mating EPDs: 14 -1.1 80 116 .23 8 22 62 18 12.3
 Carcass: 34.5 -.14 .38 -.01 .65 150 85

70 CS281 Kiki

ASA#4141588 • BD: 3/11/22 • Tattoo: 281K

ADJ BW 76	HOMO BLACK POLLED 3/4 SM 1/4 AN COW
• BW Ratio 96	Apex Dividend C765F CLRS Dividend 405D
ADJ WW 643	Zeis Cowboy Cut C585
• WW Ratio 105	CS839F Felicity CS634 Divineintervention
ADJ YW 1023	CS501C Coral
• YW Ratio 103	

CE	BW	WW	YW	ADG	DMI	MCE	MILK	MWW	STAY
12	1.1	84	136	0.33	1.09	6	16	58	15
DOC	CW	YG	MARB	BF	REA	SF	\$GN	API	TI
13.9	40.3	-0.18	0.39	-0.040	0.65	-0.32	0.074	135	84

LOT 70A: Heifer Calf • BD: 3/6/25 • BW: 86 • Sire: CS160 Jackpot
 Est Plan Mating EPDs: 14 -.9 70 113 .27 8 18 53 14 14.2
 Carcass: 33.2 -.12 .43 -.02 .53 -.36 141 79

71 CS282 Cassandra

ASA#4141587 • BD: 3/12/22 • Tattoo: 282K

ADJ BW 80	BLACK POLLED 5/8 SM 11/32 AN 1/32 CS COW
• BW Ratio 101	Apex Dividend C765F CLRS Dividend 405D
ADJ WW 628	Zeis Cowboy Cut C585
• WW Ratio 103	CS980 Glenda Bridle Bit Rembrandt D630
ADJ YW 988	Apex Glenda WA106E
• YW Ratio 100	

CE	BW	WW	YW	ADG	DMI	MCE	MILK	MWW	STAY
11	-0.1	83	127	0.27	0.57	6	11	52	15
DOC	CW	YG	MARB	BF	REA	SF	\$GN	API	TI
12.8	40.1	-0.18	0.38	-0.036	0.68	-0.33	0.064	136	84

Sells Open



2021
MODELS
LOTS 72-80

72 **CS104 Jinger**

ASA#3978369 • BD: 3/3/21 • Tattoo: 104J

ADJ BW 64
• BW Ratio 82
ADJ WW 640
• WW Ratio 97
ADJ YW 1036
• YW Ratio 99

HOMO BLACK POLLED 3/4 SM 1/4 AN COW

CS806F Fiscal Asset

CS956 Ginger

Connealy Comrade 1385

CS618D Delight

CCR Wide Range 9005A

DMGC Ms Ntl 315A

CE	BW	WW	YW	ADG	DMI	MCE	MILK	MWW	STAY
17	-1.1	85	133	0.30	1.05	9	25	67	16
DOC	CW	YG	MARB	BF	REA	SF	\$GN	API	TI
14.4	34.0	-0.24	0.28	-0.036	0.80	-0.39	0.064	142	86

LOT 72A: Bull Calf • BD: 3/4/25 • BW: 85 • Sire: FF CB 1316 J1210

Est Plan Mating EPDs: 14 -.4 86 129 .27 9 29 72 17 14.2

Carcass: 30.8 -.16 .42 -.03 .55 151 89

73 **CS103 Jade**

ASA#3978368 • BD: 3/3/21 • Tattoo: 103J

ADJ BW 87
• BW Ratio 111
ADJ WW 756
• WW Ratio 114
ADJ YW 1076
• YW Ratio 103

HOMO BLACK POLLED 1/2 SM 1/2 AN COW

RM Regulator 7202

CS501C Coral

Connealy Regulator

PA Hazel 1261-344

IR Range Boss Y623

CS326A Aquamarine

CE	BW	WW	YW	ADG	DMI	MCE	MILK	MWW	STAY
11	2.1	86	136	0.31	1.19	8	19	63	14
DOC	CW	YG	MARB	BF	REA	SF	\$GN	API	TI
13.8	50.1	-0.09	0.50	-0.008	0.74	-0.30	0.064	137	86

Pasture Sire: HSF Honor 7729 90K from 5/18 to 11/4/24

Est Plan Mating EPDs: 13 .2 82 133 .32 7 24 65 15 11.0

Carcass: 49.6 -.11 .57 -.01 .76 -.32 148 88

74 **CS118 Jolee**

ASA#3978383 • BD: 3/14/21 • Tattoo: 118J

ADJ BW 61
• BW Ratio 78
ADJ WW 577
• WW Ratio 87
ADJ YW 818
• YW Ratio 78

BLACK POLLED 5/8 SM 3/8 AN COW

CS806F Fiscal Asset

CS980 Glenda

Connealy Comrade 1385

CS618D Delight

Bridle Bit Rembrandt D630

Apex Glenda WA106E

CE	BW	WW	YW	ADG	DMI	MCE	MILK	MWW	STAY
17	-3.8	60	86	0.16	0.10	8	16	46	14
DOC	CW	YG	MARB	BF	REA	SF	\$GN	API	TI
12.7	24.8	-0.18	0.45	-0.034	0.51	-0.29	0.034	141	76

Pasture Sire: HSF Frosty 99Z 128H from 5/9 to 11/4/24

Est Plan Mating EPDs: 18 -3.8 73 103 .19 9 20 57 18 13.8

Carcass: 31.8 -.19 .41 -.02 .68 -.31 153 83

75 **CS119 Jazmine**

ASA#3978384 • BD: 3/14/21 • Tattoo: 119J

ADJ BW 78
• BW Ratio 100
ADJ WW 702
• WW Ratio 106
ADJ YW 1096
• YW Ratio 105

HOMO BLACK POLLED 1/4 SM 23/32 AN 1/32 CS COW

RM Regulator 7202

Apex Catalina YB495E

Connealy Regulator

PA Hazel 1261-344

W/C Holy Smoke 060C

Apex Catalina WY495B

CE	BW	WW	YW	ADG	DMI	MCE	MILK	MWW	STAY
13	-0.1	78	125	0.30	0.96	8	18	58	10
DOC	CW	YG	MARB	BF	REA	SF	\$GN	API	TI
12.0	45.2	-0.04	0.44	-0.007	0.54	-0.16	0.084	125	81

Pasture Sire: HSF Frosty 99Z 128H from 5/9 to 11/4/24

Est Plan Mating EPDs: 16 -2.0 82 123 .26 9 21 63 16 13.4

Carcass: 42.0 -.12 .40 -.01 .70 -.24 143 85

76 **CS133 June**

ASA#3978398 • BD: 3/29/21 • Tattoo: 133J

ADJ BW 73
• BW Ratio 93
ADJ WW 668
• WW Ratio 101
ADJ YW 999
• YW Ratio 95

BLACK POLLED 5/8 SM 11/32 AN 1/32 CS COW

Apex Proclamation AC457G

Apex Glenda WA106E

WS Proclamation E202

Apex Fran WA457C

TJ High Calibre 556B

Apex Glenda W106A

CE	BW	WW	YW	ADG	DMI	MCE	MILK	MWW	STAY
15	-0.5	81	127	0.29	0.87	8	20	60	16
DOC	CW	YG	MARB	BF	REA	SF	\$GN	API	TI
10.4	43.7	-0.10	0.44	-0.026	0.56	-0.18	0.074	145	86

LOT 76A: Heifer Calf • BD: 3/3/25 • BW: 55 • Sire: HSF Frosty 99Z 128H

Est Plan Mating EPDs: 17 -2.2 84 124 .26 9 22 64 19 12.6

Carcass: 41.2 -.15 .40 -.02 .71 -.25 158 89



77 CS138 Joy

ASA#3978403 • BD: 4/2/21 • Tattoo: 138J

ADJ BW 87	HOMO BLACK POLLED 5/8 SM 3/8 AN COW
• BW Ratio 111	Apex Proclamation AC457G
ADJ WW 709	WS Proclamation E202
• WW Ratio 107	Apex Fran WA457C
ADJ YW 1061	Connealy Thunder
• YW Ratio 101	DMGC Ms Ntl 315A
	CS509C Cloud 9

CE	BW	WW	YW	ADG	DMI	MCE	MILK	MWW	STAY
12	2.3	89	140	0.32	1.07	7	16	60	15
DOC	CW	YG	MARB	BF	REA	SF	\$GN	API	TI
13.9	43.1	0.02	0.51	0.017	0.50		0.094	142	87

LOT 77A: Heifer Calf • BD: 2/19/25 • BW: 80 • Sire: HSF Frosty 99Z 128H
 Est Plan Mating EPDs: 15 -8 87 131 .27 9 20 64 18 14.4
 Carcass: 40.9 -.09 .44 .00 .68 154 89



78 CS112 Jolly Good

ASA#3978377 • BD: 3/12/21 • Tattoo: 112J

ADJ BW 82	HOMO BLACK POLLED PUREBRED SM COW
• BW Ratio 105	Apex Dividend C765F
ADJ WW 674	CLRS Dividend 405D
• WW Ratio 102	Zeis Cowboy Cut C585
ADJ YW 1044	Nichols Manifest Z179
• YW Ratio 100	CS1007X X-Tra Good
	CS410B Bella

CE	BW	WW	YW	ADG	DMI	MCE	MILK	MWW	STAY
9	1.7	78	127	0.30	0.70	5	10	49	19
DOC	CW	YG	MARB	BF	REA	SF	\$GN	API	TI
13.2	36.3	-0.17	0.30	-0.053	0.48	-0.30	0.084	143	81

LOT 78A: Heifer Calf • BD: 3/1/25 • BW: 76 • Sire: HSF Frosty 99Z 128H
 Est Plan Mating EPDs: 14 -1.1 82 124 .26 8 17 58 20 14.0
 Carcass: 37.5 -.18 .33 -.03 .67 -.31 152 85

79 CS137 Judy

ASA#3978402 • BD: 4/2/21 • Tattoo: 137J

ADJ BW 74	HOMO BLACK POLLED 1/2 SM 1/2 AN COW
• BW Ratio 95	RM Regulator 7202
ADJ WW 677	Connealy Regulator
• WW Ratio 102	PA Hazel 1261-344
ADJ YW 1067	Nichols Manifest Z179
• YW Ratio 102	CS406B Brenda
	CS911W Winifred

CE	BW	WW	YW	ADG	DMI	MCE	MILK	MWW	STAY
14	-1.2	67	111	0.27	0.93	9	25	60	13
DOC	CW	YG	MARB	BF	REA	SF	\$GN	API	TI
11.3	49.9	-0.05	0.44	-0.009	0.61		0.074	134	79

Pasture Sire: HSF Honor 7729 90K from 5/18 to 11/4/24
 Est Plan Mating EPDs: 14 -1.5 73 120 .30 8 27 64 15 9.7
 Carcass: 49.5 -.09 .54 -.01 .70 147 84

80 CS143 Jewel

ASA#3978408 • BD: 4/20/21 • Tattoo: 143J

ADJ BW 67	BLACK POLLED 1/4 SM 3/4 AN COW
• BW Ratio 86	CS806F Fiscal Asset
ADJ WW 676	Connealy Comrade 1385
• WW Ratio 102	CS618D Delight
ADJ YW 1040	Connealy Blackhawk 6198
• YW Ratio 99	Bear Mtn Miss Manor 2139
	J Miss Manor 9078

CE	BW	WW	YW	ADG	DMI	MCE	MILK	MWW	STAY
15	-1.4	81	131	0.31	1.20	7	18	60	15
DOC	CW	YG	MARB	BF	REA	SF	\$GN	API	TI
13.9	45.2	0.02	0.51	-0.001	0.39		0.054	145	86

LOT 80A: Heifer Calf • BD: 3/3/25 • BW: 68 • Sire: HSF Frosty 99Z 128H
 Est Plan Mating EPDs: 17 -2.6 84 126 .27 9 21 64 18 14.4
 Carcass: 42.0 -.09 .44 -.01 .62 153 88

BULL BUYER'S GUIDE

Definitions of Terms

Expected Progeny Differences (EPDs): EPDs are the most accurate and effective tool available for comparing genetic levels.
 Back Fat (BF): Inches of backfat.
 Birth Weight (BW): Pounds of birth weight.
 Calving Ease (CE): Percent of unassisted births when used on heifers.
 Carcass Weight (CW): Pounds of carcass weight.
 Maternal Calving Ease (MCE): Percent of unassisted births in first-calving daughters.
 Milk (MLK): Pounds of weaning weight due to milk.
 Marbling (MRB): Marbling score.
 Maternal Weaning Weight (MWW): Pounds of weaning weight due to milk and growth.
 Ribeye Area (REA): Square inches of ribeye.
 Warner-Bratzler Shear Force (WBSF): Pounds of force required to shear a steak.
 Stayability (STAY): Percent of daughters remaining in the cowherd at 6 years of age.
 Terminal Index (TI): Dollars per cow exposed under a terminal-sire scenario.
 Weaning Weight (WW): Pounds of weaning weight.
 Yearling Weight (YW): Pounds of yearling weight.
 Yield Grade (YG): Yield grade score.

Explanation of How to Utilize API and TI Indexes

First, determine which index to use; if you're keeping replacements use API, if not, TI. Then, just as with EPDs, zero in on the unit difference between bulls. (As described to the left, index units are in dollars per cow exposed.) The difference can be used to determine how much a bull is worth compared to another. Or, put another way, how much you can pay for one bull compared to another. For example, when buying an all-purpose-type sire, you can quickly figure a bull scoring +100 for API is worth an extra \$6,000 over a \$50 bull if both are exposed to 30 cows over 4 years (\$50 diff. x 30 hd. x 4 yr. = \$6,000). A percentile-ranking chart is required to determine where a bull's index value ranks him relative to other bulls in the breed. For more information, visit www.simmental.org.

2020 MODELS – LOTS 81-88



81 CS2041 Harmony

ASA#3821501 • BD: 4/5/20 • Tattoo: 2041H

ADJ BW 68
• BW Ratio
ADJ WW 668
• WW Ratio
ADJ YW 1071
• YW Ratio

HOMO BLACK POLLED 1/2 SM 1/2 AN COW
RM Regulator 7202 Connealy Regulator
PA Hazel 1261-344
CS426B Belinda Nichols Manifest Z179
CS 136L Lynn

CE	BW	WW	YW	ADG	DMI	MCE	MILK	MWW	STAY
12	-1.3	57	79	0.14	0.33	9	27	56	13
DOC	CW	YG	MARB	BF	REA	SF	\$GN	API	TI
11.0	23.4	-0.07	0.45	-0.008	0.36		0.004	125	71

LOT 81A: Heifer Calf • BD: 2/25/25 • BW: 82 • Sire: HSF Frosty 99Z 128H
Est Plan Mating EPDs: 15 -2.6 71 100 .18 9 26 62 17 12.9
Carcass: 31.1 -.13 .41 -.01 .61 144 80

82 CS2004 Hailey

ASA#3821538 • BD: 2/27/20 • Tattoo: 2004H

ADJ BW 80
• BW Ratio 98
ADJ WW 637
• WW Ratio 99
ADJ YW 991
• YW Ratio 96

BLACK POLLED 1/2 SM 1/2 AN COW
Apex Gold Strike U716E Rousey Gold Strike 512C
Top Pride UG716
CS213 Zulu White Star 263X W21
CS443P Pussy Willow

CE	BW	WW	YW	ADG	DMI	MCE	MILK	MWW	STAY
15	-0.9	69	104	0.22	0.61	9	14	48	17
DOC	CW	YG	MARB	BF	REA	SF	\$GN	API	TI
11.1	30.1	-0.09	0.41	-0.002	0.55	-0.32	0.004	140	77

LOT 82: Heifer Calf • BD: 2/19/25 • BW: 70 • Sire: HSF Frosty 99Z 128H
Est Plan Mating EPDs: 17 -2.4 78 112 .22 10 19 58 19 13.0
Carcass: 34.4 -.14 .39 -.01 .70 -.32 151 83

83 CS2008 Haviland

ASA#3821534 • BD: 3/4/20 • Tattoo: 2008H

ADJ BW 81
• BW Ratio 99
ADJ WW 710
• WW Ratio 110
ADJ YW 1069
• YW Ratio 104

HOMO BLACK POLLED 5/8 SM 1/4 AN 1/8 CS COW
Apex Masterlink C104F CCR Masterlink 9053C
JRA Commemorate 512C
Apex Catalina YB495E W/C Holy Smoke 060C
Apex Catalina WY495B

CE	BW	WW	YW	ADG	DMI	MCE	MILK	MWW	STAY
13	1.7	84	130	0.29	0.77	7	29	71	14
DOC	CW	YG	MARB	BF	REA	SF	\$GN	API	TI
11.3	38.4	-0.26	0.29	-0.063	0.68	-0.19	0.074	128	82

Pasture Sire: FF CB 1316 J1210 from 5/14 to 11/4/24
Est Plan Mating EPDs: 12 1.1 85 127 .26 7 31 74 16 12.7
Carcass: 33.0 -.17 .42 -.04 .49 143 87

84 CS2033 Honor

ASA#3821509 • BD: 3/27/20 • Tattoo: 2033H

ADJ BW 76
• BW Ratio 93
ADJ WW 704
• WW Ratio 109
ADJ YW 1075
• YW Ratio 104

HOMO BLACK POLLED 1/2 SM 1/2 AN COW
RM Regulator 7202 Connealy Regulator
PA Hazel 1261-344
CS623D Duchess IR Expedition Z673
CS942W Warranty

CE	BW	WW	YW	ADG	DMI	MCE	MILK	MWW	STAY
15	-3.0	68	106	0.24	0.67	12	26	61	14
DOC	CW	YG	MARB	BF	REA	SF	\$GN	API	TI
12.3	39.0	-0.11	0.51	-0.015	0.62	-0.34	0.064	145	83

Sells Open

85 CS2044 Halo

ASA#3821498 • BD: 4/11/20 • Tattoo: 2044H

ADJ BW 71
• BW Ratio 93
ADJ WW 661
• WW Ratio 109
ADJ YW 1040
• YW Ratio 104

BLACK POLLED PUREBRED SM COW
Apex Masterlink C104F CCR Masterlink 9053C
JRA Commemorate 512C
Apex Glenda WA106E TJ High Calibre 556B
Apex Glenda W106A

CE	BW	WW	YW	ADG	DMI	MCE	MILK	MWW	STAY
13	1.8	76	122	0.29	0.67	7	23	61	18
DOC	CW	YG	MARB	BF	REA	SF	\$GN	API	TI
10.9	42.3	-0.28	0.35	-0.075	0.71	-0.27	0.094	149	83

LOT 85A: Heifer Calf • BD: 3/10/25 • BW: 89 • Sire: HSF Frosty 99Z 128H
Est Plan Mating EPDs: 16 -1.0 81 122 .26 9 24 64 20 12.9
Carcass: 40.5 -.24 .36 -.05 .78 -.30 157 87



86 CS2049 Honesty

ASA#3821493 • BD: 5/6/20 • Tattoo: 2049H

ADJ BW 89
• BW Ratio 109
ADJ WW 673
• WW Ratio 104
ADJ YW 1117
• YW Ratio 108

HOMO BLACK POLLED 1/2 SM 1/2 AN COW
RM Regulator 7202 Connealy Regulator
PA Hazel 1261-344
IR Expedition Z673
CS626D Desire CS911W Winifred

CE	BW	WW	YW	ADG	DMI	MCE	MILK	MWW	STAY
13	-0.8	69	112	0.26	0.92	9	24	60	15
DOC	CW	YG	MARB	BF	REA	SF	\$GN	API	TI
11.8	39.6	-0.02	0.52	-0.006	0.42	-0.31	0.064	141	81

LOT 86A: Bull Calf • BD: 2/27/25 • BW: 86 • Sire: HSF Frosty 99Z 128H
Est Plan Mating EPDs: 16 -2.3 78 116 .24 10 24 64 18 13.3
Carcass: 39.2 -.11 .44 -.01 .64 -.32 151 85



87 CS2051 Heaven Sent

ASA#3821491 • BD: 5/8/20 • Tattoo: 2051H

ADJ BW 82
• BW Ratio 100
ADJ WW 587
• WW Ratio 91
ADJ YW 1103
• YW Ratio 107

HOMO BLACK POLLED 3/8 SM 5/8 AN COW
RM Regulator 7202 Connealy Regulator
PA Hazel 1261-344
IR Expedition Z673
CS716E Emelyn 802U Unity

CE	BW	WW	YW	ADG	DMI	MCE	MILK	MWW	STAY
11	0.6	74	126	0.33	1.16	7	23	60	10
DOC	CW	YG	MARB	BF	REA	SF	\$GN	API	TI
12.0	47.0	-0.08	0.69	-0.026	0.52	-0.30	0.104	136	85

LOT 87A: Bull Calf • BD: 1/25/25 • BW: 84 • Sire: Unknown

88 CS2058 Heidi

ASA#3821484 • BD: 8/11/20 • Tattoo: 2058H

ADJ BW 82
• BW Ratio 100
ADJ WW N/A
• WW Ratio
ADJ YW N/A
• YW Ratio

HOMO BLACK POLLED PUREBRED SM COW
Apex Masterlink C104F CCR Masterlink 9053C
JRA Commemorate 512C
CS1017X Xtra Fine CS420P Pinnacle
RL Shawna Edition 56

CE	BW	WW	YW	ADG	DMI	MCE	MILK	MWW	STAY
13	0.7	72	108	0.22	0.42	7	32	69	18
DOC	CW	YG	MARB	BF	REA	SF	\$GN	API	TI
9.9	21.7	-0.33	0.30	-0.085	0.53	-0.19	0.054	147	82

Pasture Sire: CS160 Jackpot from 5/15 to 11/4/24
Est Plan Mating EPDs: 15 -1.1 64 99 .22 9 26 58 16 12.2
Carcass: 23.9 -.20 .39 -.04 .47 -.29 144 77

2019 MODELS – LOTS 89-92

89 CS902 Grace

ASA#3660685 • BD: 2/7/19 • Tattoo: CS902G

ADJ BW 75
• BW Ratio 93
ADJ WW 629
• WW Ratio 107
ADJ YW N/A
• YW Ratio

HOMO BLACK POLLED 3/4 SM 1/4 AN COW
CLRS Dividend 405D CLRS After Shock 604 A
CLRS Bonnia 405 B
Apex Lori PC253E ESTreasury CW90
Apex Lori P253C

CE	BW	WW	YW	ADG	DMI	MCE	MILK	MWW	STAY
16	-2.2	74	113	0.24	0.48	7	21	59	16
DOC	CW	YG	MARB	BF	REA	SF	\$GN	API	TI
11.6	24.6	-0.21	0.21	-0.050	0.48	-0.37	0.074	133	78

LOT 89A: Heifer Calf • BD: 3/6/25 • BW: 65 • Sire: HSF Frosty 99Z 128H
Est Plan Mating EPDs: 17 -3.0 80 117 .23 9 23 63 18 13.2
Carcass: 31.7 -.20 .29 -.03 .67 -.35 152 85

90 CS961 Garnet

ASA#3660697 • BD: 3/2/19 • Tattoo: CS961G

ADJ BW 89
• BW Ratio 110
ADJ WW 652
• WW Ratio 111
ADJ YW N/A
• YW Ratio

HOMO BLACK HOMO POLLED 5/8 SM 3/8 AN COW
CCR Wide Range 9005A S D S Graduate 006X
CCR Ms Apple 9332W
CS605D Diamond IR Expedition Z673
SRH Lead On 920

CE	BW	WW	YW	ADG	DMI	MCE	MILK	MWW	STAY
12	2.0	84	142	0.36	1.29	8	18	60	13
DOC	CW	YG	MARB	BF	REA	SF	\$GN	API	TI
12.5	38.1	-0.31	0.40	-0.051	0.93	-0.33	0.094	133	85

Pasture Sire: HSF Frosty 99Z 128H from 5/9 to 11/4/24
Est Plan Mating EPDs: 15 -.9 85 132 .29 9 21 64 17 13.7
Carcass: 38.4 -.25 .38 -.03 .89 -.33 150 88





91 CS957 Gretchen

ASA#3660692 • BD: 2/22/19 • Tattoo: CS957G

ADJ BW 82
• BW Ratio 102
ADJ WW 605
• WW Ratio 103
ADJ YW N/A
• YW Ratio

HOMO BLACK POLLED 1/2 SM 1/2 AN COW

Tehama Tahoe B767 Tehama Upward Y238
Tehama Mary Blackbird Y684
CS412B Bethany Nichols Manifest Z179
CS612S Sur-Good

CE	BW	WW	YW	ADG	DMI	MCE	MILK	MWW	STAY
13	-0.4	86	143	0.36	1.23	7	26	70	21
DOC	CW	YG	MARB	BF	REA	SF	\$GN	API	TI
12.5	56.0	-0.02	0.56	-0.011	0.58		0.094	161	92

LOT 91A: Bull Calf • BD: 2/27/25 • BW: 110 • Sire: CS160 Jackpot
Est Plan Mating EPDs: 15 -1.7 71 116 .29 9 23 59 17 13.5
Carcass: 41.0 -.04 .52 -.01 .49 151 82

92 CS956 Ginger

ASA#3660693 • BD: 2/22/19 • Tattoo: CS956G

ADJ BW 83
• BW Ratio 103
ADJ WW 633
• WW Ratio 107
ADJ YW N/A
• YW Ratio

HOMO BLACK POLLED PUREBRED SM COW

CCR Wide Range 9005A S D S Graduate 006X
CCR Ms Apple 9332W
DMGC Ms Ntl 315A TJ New Time Line 113X
DMGC Ms SB Of 219M 905W

CE	BW	WW	YW	ADG	DMI	MCE	MILK	MWW	STAY
15	0.4	90	142	0.32	0.95	9	18	63	17
DOC	CW	YG	MARB	BF	REA	SF	\$GN	API	TI
13.7	31.4	-0.34	0.07	-0.037	1.07	-0.46	0.084	143	86

LOT 92A: Heifer Calf • BD: 2/25/25 • BW: 83 • Sire: CS160 Jackpot
Est Plan Mating EPDs: 16 -1.3 73 116 .27 10 18 55 15.6 14.1
Carcass: 28.7 -.20 .27 -.02 .74 -.43 142 79



2018 MODELS – LOTS 93-96

93 CS825F French Kiss

ASA#3500772 • BD: 3/14/18 • Tattoo: 825F

ADJ BW 91
• BW Ratio 112
ADJ WW 627
• WW Ratio 107
ADJ YW 963
• YW Ratio 101

HOMO BLACK POLLED PUREBRED SM COW

Cast Cain 501C Dikemans Sure Bet
DMGC Ms Timeline 317A
CS410B Bella Nichols Manifest Z179
CS1007X X-Tra Good

CE	BW	WW	YW	ADG	DMI	MCE	MILK	MWW	STAY
7	3.0	75	112	0.23	0.54	4	21	59	23
DOC	CW	YG	MARB	BF	REA	SF	\$GN	API	TI
15.4	30.5	-0.26	0.23	-0.067	0.56	-0.35	0.034	140	76

LOT 93A: Heifer Calf • BD: 2/28/25 • BW: 100 • Sire: FF CB 1316 J1210
Est Plan Mating EPDs: 10 1.7 81 118 .23 6 27 68 21 14.7
Carcass: 29.0 -.17 .39 -.04 .43 148 84

94 CS834F Firstinclass

ASA#3500780 • BD: 4/17/18 • Tattoo: 834F

ADJ BW 59
• BW Ratio 73
ADJ WW 665
• WW Ratio 100
ADJ YW 943
• YW Ratio 96

HOMO BLACK POLLED PUREBRED SM COW

CS640D Destiny CS421b Blackhawk
CS1007X X-Tra Good
CS614D Daisy IR Expedition Z673
CS1017X Xtra Fine

CE	BW	WW	YW	ADG	DMI	MCE	MILK	MWW	STAY
16	-1.5	70	102	0.20	0.57	9	37	72	20
DOC	CW	YG	MARB	BF	REA	SF	\$GN	API	TI
10.9	20.5	-0.30	0.36	-0.072	0.53		0.014	157	85

LOT 94A: Bull Calf • BD: 3/7/25 • BW: 91 • Sire: FF CB 1316 J1210
Est Plan Mating EPDs: 14 -6 79 113 .22 9 35 74 19 12.5
Carcass: 24.0 -.19 .46 -.05 .41 154 87



95 | CS808F Fame

ASA#3500783 • BD: 3/3/18 • Tattoo: 808F

ADJ BW	94	HOMO BLACK POLLED 3/4 SM 1/4 AN COW
• BW Ratio	116	CS634 Divineintervention
ADJ WW	583	IR Expedition Z673
• WW Ratio	99	CS107Y Yolana
ADJ YW	1070	CS412B Bethany
• YW Ratio	112	Nichols Manifest Z179
		CS612S Sur-Good

CE	BW	WW	YW	ADG	DMI	MCE	MILK	MWW	STAY
10	2.5	77	129	0.32	0.93	6	18	57	18
DOC	CW	YG	MARB	BF	REA	SF	\$GN	API	TI
11.0	50.4	-0.17	0.48	-0.046	0.68	-0.23	0.084	140	81

Pasture Sire: HSF Frosty 99Z 128H from 5/9 to 11/4/24
 Est Plan Mating EPDs: 14 -.7 82 125 .27 8 21 62 20 12.9
 Carcass: 44.6 -.18 .42 -.03 .77 -.28 157 87

96 | CS839F Felicity

ASA#3500789 • BD: 5/3/18 • Tattoo: 839F

ADJ BW	86	HOMO BLACK POLLED 3/4 SM 1/4 AN COW
• BW Ratio	106	CS634 Divineintervention
ADJ WW	596	IR Expedition Z673
• WW Ratio	90	CS107Y Yolana
ADJ YW	965	IR Range Boss Y623
• YW Ratio	98	CS326A Aquamarine
		CS501C Coral

CE	BW	WW	YW	ADG	DMI	MCE	MILK	MWW	STAY
12	2.5	79	135	0.35	1.30	7	25	64	16
DOC	CW	YG	MARB	BF	REA	SF	\$GN	API	TI
12.8	45.6	-0.21	0.44	-0.042	0.79	-0.24	0.074	137	82

LOT 96A: Bull Calf • BD: 2/25/25 • BW: 80 • Sire: CS160 Jackpot
 Est Plan Mating EPDs: 14 -.2 67 112 .28 9 22 56 15 13.7
 Carcass: 35.8 -.14 .46 -.02 .60 -.32 143 79



2017 MODELS – LOTS 97-103



97 | Apex Lori PC253E

ASA#3335463 • BD: 3/13/17 • Tattoo: PC253E

ADJ BW	78	HOMO BLACK POLLED 5/8 SM 3/8 AN COW
• BW Ratio	98	ES Treasury CW90
ADJ WW	575	CCR Cowboy Cut 5048Z
• WW Ratio	94	ES W90
ADJ YW	N/A	Apex Lori P253C
• YW Ratio		Yardley Utah Y361
		Plattemere Queenie 807

CE	BW	WW	YW	ADG	DMI	MCE	MILK	MWW	STAY
13	0.1	71	102	0.19	0.34	8	26	62	14
DOC	CW	YG	MARB	BF	REA	SF	\$GN	API	TI
10.3	20.4	-0.21	0.28	-0.044	0.47		0.024	124	75

Pasture Sire: FF CB 1316 J1210 from 5/14 to 11/4/24
 Est Plan Mating EPDs: 13 .3 79 113 .21 8 30 70 16 12.2
 Carcass: 24.0 -.14 .42 -.03 .38 140 83



98 | Apex Glenda WA106E

ASA#3335432 • BD: 2/18/17 • Tattoo: WA106E

ADJ BW	78	HETERO BLACK POLLED 3/4 SM 3/16 AN 1/16 CS COW
• BW Ratio	98	TJ High Calibre 556B
ADJ WW	626	MCM Top Grade 018X
• WW Ratio	102	PRS Lady Done Right W214
ADJ YW	N/A	Apex Glenda W106A
• YW Ratio		Ruby NFF Excalibur 002X
		106W

CE	BW	WW	YW	ADG	DMI	MCE	MILK	MWW	STAY
12	0.9	76	121	0.28	0.69	7	20	58	19
DOC	CW	YG	MARB	BF	REA	SF	\$GN	API	TI
10.1	45.4	-0.25	0.23	-0.068	0.72		0.084	133	76

LOT 98A: Bull Calf • BD: 3/1-25 • BW: 93 • Sire: FF CB 1316 J1210
 Est Plan Mating EPDs: 12 .7 82 122 .26 7 27 67 19 12.1
 Carcass: 36.5 -.16 .39 -.04 .51 147 85

99 CS707E Emerald

ASA#3336978 • BD: 3/14/17 • Tattoo: 707E

ADJ BW 86
• BW Ratio 106
ADJ WW 615
• WW Ratio 107
ADJ YW 1194
• YW Ratio 112

HOMO BLACK POLLED PUREBRED SM COW

IR Expedition Z673 IR Expedition W413
IR Ms Vienna W120
DMGC Ms Ntl 315A TJ New Time Line 113X
DMGC Ms SB Of 219M 905W

CE	BW	WW	YW	ADG	DMI	MCE	MILK	MWW	STAY
13	3.4	85	137	0.33	0.77	7	14	56	14
DOC	CW	YG	MARB	BF	REA	SF	\$GN	API	TI
14.3	38.4	-0.27	0.23	-0.059	0.76	-0.43	0.124	135	82

Sells Open



100 CS715E Egypt

ASA#3336986 • BD: 3/18/17 • Tattoo: 715E

ADJ BW 79
• BW Ratio 97
ADJ WW 620
• WW Ratio 108
ADJ YW 1131
• YW Ratio 106

HOMO BLACK POLLED 5/8 SM 3/8 AN COW

Cast Cain 501C Dikemans Sure Bet
DMGC Ms Timeline 317A
CS525C Chandelier Nichols Quiet Lad A527
CS1035X-Emplary

CE	BW	WW	YW	ADG	DMI	MCE	MILK	MWW	STAY
12	0.6	72	108	0.23	0.29	7	32	66	22
DOC	CW	YG	MARB	BF	REA	SF	\$GN	API	TI
17.7	21.3	-0.24	0.55	-0.033	0.65		0.064	153	82

LOT 100A: Heifer Calf • BD: 1/26/25 • BW: 75 • Sire: Unknown



101 CS730E Ella

ASA#3337001 • BD: 3/29/17 • Tattoo: 730E

ADJ BW 88
• BW Ratio 108
ADJ WW 618
• WW Ratio 107
ADJ YW 1142
• YW Ratio 107

HOMO BLACK POLLED 3/4 SM 1/4 AN COW

CS427B Bonanza Nichols Manifest Z179
CS942W Warranty
808U Unne Love Rito 4L60 Of 2536 Bvnd 208
RL Sally Edition S47

CE	BW	WW	YW	ADG	DMI	MCE	MILK	MWW	STAY
9	3.1	72	117	0.28	0.80	5	22	58	20
DOC	CW	YG	MARB	BF	REA	SF	\$GN	API	TI
10.4	25.0	-0.34	-0.01	-0.069	0.72		0.074	113	65

LOT 101A: Bull Calf • BD: 3/11/25 • BW: 73 • Sire: CS160 Jackpot
Est Plan Mating EPDs: 13 .1 64 103 .25 8 21 53 17 12.5
Carcass: 25.5 -.20 .23 -.04 .56 131 70



102 CS706E Essence

ASA#3336977 • BD: 3/12/17 • Tattoo: 706E

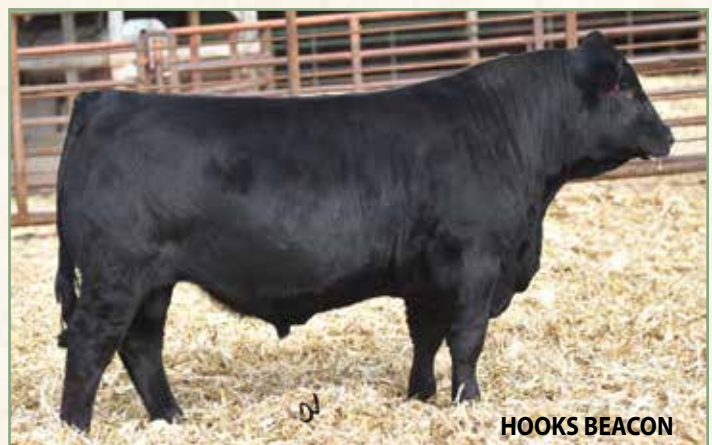
ADJ BW 69
• BW Ratio 85
ADJ WW 547
• WW Ratio 95
ADJ YW 998
• YW Ratio 94

HOMO BLACK POLLED 3/4 SM 1/4 AN COW

Hook's Beacon 56B Hooks Shear Force 38K
Hooks Zafirah 41Z
CS526C Constance IR Expedition Z673
CS907wwonderwoman

CE	BW	WW	YW	ADG	DMI	MCE	MILK	MWW	STAY
15	-3.7	61	94	0.21	0.72	9	24	54	18
DOC	CW	YG	MARB	BF	REA	SF	\$GN	API	TI
8.3	27.7	-0.19	0.78	-0.027	0.62	-0.38	-0.006	166	86

LOT 102A: Heifer Calf • BD: 3/7/25 • BW: 94 • Sire: FF CB 1316 J1210
Est Plan Mating EPDs: 14 -1.7 74 109 .22 8 29 66 18 11.2
Carcass: 27.6 -.13 .67 -.02 .46 164 90



HOOKS BEACON



103 Apex Remi UC444E

ASA#3335483 • BD: 5/15/17 • Tattoo: UC444E

ADJ BW 72
• BW Ratio 91
ADJ WW 555
• WW Ratio 91
ADJ YW N/A
• YW Ratio

BLACK POLLED 5/8 SM 3/8 AN COW
THR Testament 5451C Hook's Xavier 14X
Apex Remi U444C Oval F Ms Singletaryz237
W/C Loaded Up 1119Y
LCO Rita UG444

CE	BW	WW	YW	ADG	DMI	MCE	MILK	MWW	STAY
16	-2.6	62	95	0.21	0.28	9	20	51	13
DOC	CW	YG	MARB	BF	REA	SF	\$GN	API	TI
11.7	25.5	-0.27	0.51	-0.049	0.66	-0.43	0.074	142	79

LOT 103A: Heifer Calf • BD: 12/5/24 • BW: N/A • Sire: Unknown

2014 TO 2016 MODELS – LOTS 104-114



104 CS605D Diamond

ASA#3115802 • BD: 2/29/16 • Tattoo: 605D

ADJ BW 80
• BW Ratio 99
ADJ WW 728
• WW Ratio 114
ADJ YW 1102
• YW Ratio 108

HOMO BLACK HOMO POLLED 3/8 SM 5/8 AN COW
IR Expedition Z673 IR Expedition W413
SRH Lead On 920 IR Ms Vienna W120
Connealy Lead On
Frontier Vesta 157117

CE	BW	WW	YW	ADG	DMI	MCE	MILK	MWW	STAY
14	1.7	79	140	0.38	1.64	9	33	73	13
DOC	CW	YG	MARB	BF	REA	SF	\$GN	API	TI
13.4	48.5	-0.16	0.84	-0.063	0.53		0.084	154	93

LOT 104A: Heifer Calf • BD: 1/24/25 • BW: 81 • Sire: Unknown

105 CS614D Daisy

ASA#3115811 • BD: 3/10/16 • Tattoo: 614D

ADJ BW 85
• BW Ratio 105
ADJ WW 713
• WW Ratio 112
ADJ YW 1121
• YW Ratio 110

HOMO BLACK POLLED PUREBRED SM COW
IR Expedition Z673 IR Expedition W413
CS1017X Xtra Fine IR Ms Vienna W120
CS420P Pinnacle
RL Shawna Edition S6

CE	BW	WW	YW	ADG	DMI	MCE	MILK	MWW	STAY
14	0.0	79	121	0.26	0.62	8	29	68	16
DOC	CW	YG	MARB	BF	REA	SF	\$GN	API	TI
10.7	27.6	-0.36	0.31	-0.088	0.68		0.074	149	87

LOT 105A: Heifer Calf • BD: 2/24/25 • BW: 86 • Sire: CS160 Jackpot
Est Plan Mating EPDs: 15 -1.5 67 105 .24 9 24 58 15 12.6
Carcass: 26.8 -.21 .39 -.05 .54 144 79

106 CS623D Duchess

ASA#3115820 • BD: 3/14/16 • Tattoo: 623D

ADJ BW 83
• BW Ratio 103
ADJ WW 695
• WW Ratio 109
ADJ YW 1089
• YW Ratio 107

HOMO BLACK POLLED PUREBRED SM COW
IR Expedition Z673 IR Expedition W413
CS942W Warranty IR Ms Vienna W120
DMGC Thumper 749T
S213M Millie

CE	BW	WW	YW	ADG	DMI	MCE	MILK	MWW	STAY
13	-2.0	60	95	0.22	0.14	10	23	53	13
DOC	CW	YG	MARB	BF	REA	SF	\$GN	API	TI
11.5	24.3	-0.32	0.27	-0.060	0.72	-0.37	0.074	134	76

Sells Open

107 CS626D Desire

ASA#3115823 • BD: 3/16/16 • Tattoo: 626D

ADJ BW 77
• BW Ratio 95
ADJ WW 633
• WW Ratio 99
ADJ YW 991
• YW Ratio 97

HOMO BLACK POLLED PUREBRED SM COW
IR Expedition Z673 IR Expedition W413
CS911W Winifred IR Ms Vienna W120
CS722T Tulsa Time
RL Sally Edition S47

CE	BW	WW	YW	ADG	DMI	MCE	MILK	MWW	STAY
18	-3.0	61	95	0.21	0.53	11	26	56	19
DOC	CW	YG	MARB	BF	REA	SF	\$GN	API	TI
10.4	22.3	-0.16	0.29	-0.042	0.33	-0.30	0.024	155	78

Pasture Sire: HSF Frosty 99Z 128H from 5/9 to 11/4/24
Est Plan Mating EPDs: 18 -3.4 74 108 .22 11 25 62 20 12.6
Carcass: 30.5 -.18 .33 -.03 .59 -.31 160 84

108 CS507C Country Girl

ASA#3075727 • BD: 3/14/15 • Tattoo: 507C

ADJ BW 68
• BW Ratio 80
ADJ WW 466
• WW Ratio 87
ADJ YW 861
• YW Ratio 93

HOMO BLACK POLLED 1/2 SM 1/2 AN COW
Nichols Quiet Lad A527 Nichols Quiet Lad X138
CS154Y Yummy Wardens Blackcap DB 1302
DMGC Thumper 749T
DMGC Tina 731T

CE	BW	WW	YW	ADG	DMI	MCE	MILK	MWW	STAY
16	-3.9	50	78	0.17	0.08	10	15	37	21
DOC	CW	YG	MARB	BF	REA	SF	\$GN	API	TI
14.0	6.1	-0.34	0.31	-0.058	0.57		0.014	144	68

LOT 108A: Heifer Calf • BD: 3/11/25 • BW: 71 • Sire: HSF Honor 7729 90K
Est Plan Mating EPDs: 15 -2.8 64 104 .25 8 22 53 19 11.1
Carcass: 27.6 -.23 .47 -.04 .68 152 79

109 CS510C Cheyenne

ASA#3075730 • BD: 3/15/15 • Tattoo: 510C

ADJ BW 89 **HOMO BLACK POLLED 3/8 SM 5/8 AN COW**
 • BW Ratio 105 CS101Y Yankee TJ Easy Money 101W
ADJ WW 609 802U Unity
 • WW Ratio 101 SRH Lead On 920 Connealy Lead On
ADJ YW 1040 Frontier Vesta 157117
 • YW Ratio 102

CE	BW	WW	YW	ADG	DMI	MCE	MILK	MWW	STAY
10	2.8	73	119	0.29	1.25	6	16	53	13
DOC	CW	YG	MARB	BF	REA	SF	\$GN	API	TI
9.0	52.8	-0.10	0.68	-0.040	0.57		0.014	135	81

Sells Open

110 CS513C Cha-Ching

ASA#3075733 • BD: 3/15/15 • Tattoo: 513C

ADJ BW 79 **HOMO BLACK POLLED 5/8 SM 3/8 AN COW**
 • BW Ratio 93 CS133Y Yahoo White Star Wrangler W29
ADJ WW 618 CS942W Warranty
 • WW Ratio 104 CS904W Wendy Rito 616 Of 4B20 6807
ADJ YW 942 CS717T Teri
 • YW Ratio 95

CE	BW	WW	YW	ADG	DMI	MCE	MILK	MWW	STAY
13	-0.3	57	85	0.17	0.12	9	29	57	18
DOC	CW	YG	MARB	BF	REA	SF	\$GN	API	TI
13.4	22.3	-0.17	0.41	-0.042	0.37		0.044	133	71

LOT 110A: Heifer Calf • BD: 2/20/25 • BW: 82 • Sire: HSF Frosty 99Z 128H
 Est Plan Mating EPDs: 16 -2.1 72 103 .20 10 27 62 19 14.1
 Carcass: 30.5 -.18 .39 -.03 .61 150 81

111 CS526C Constance

ASA#3075746 • BD: 3/27/15 • Tattoo: 526C

ADJ BW 76 **HOMO BLACK POLLED 5/8 SM 3/8 AN COW**
 • BW Ratio 90 IR Expedition Z673 IR Expedition W413
ADJ WW 524 IR Ms Vienna W120
 • WW Ratio 87 CS907wwonderwoman G A R Predestined
ADJ YW 847 CS 033K Kim
 • YW Ratio 86

CE	BW	WW	YW	ADG	DMI	MCE	MILK	MWW	STAY
15	-4.3	53	90	0.23	0.44	8	24	50	15
DOC	CW	YG	MARB	BF	REA	SF	\$GN	API	TI
7.6	17.5	-0.06	0.71	-0.034	0.05	-0.29	0.064	154	80

LOT 111A: Heifer Calf • BD: 2/21/25 • BW: 66 • Sire: CS160 Jackpot
 Est Plan Mating EPDs: 16 -3.6 54 90 .22 9 22 49 14 11.1
 Carcass: 21.8 -.06 .59 -.02 .23 -.34 148 76



112 CS406B Brenda

ASA#2927119 • BD: 3/11/14 • Tattoo: CS406B

ADJ BW 93 **HOMO BLACK POLLED PUREBRED SM COW**
 • BW Ratio 106 Nichols Manifest Z179 Nichols Manifest X49
ADJ WW 673 Nichols Beauty S259
 • WW Ratio 110 CS911W Winifred CS722T Tulsa Time
ADJ YW 1211 RL Sally Edition S47
 • YW Ratio 110

CE	BW	WW	YW	ADG	DMI	MCE	MILK	MWW	STAY
14	0.2	63	105	0.26	0.63	8	28	59	23
DOC	CW	YG	MARB	BF	REA	SF	\$GN	API	TI
9.4	45.8	-0.21	0.13	-0.048	0.76		0.064	144	72

LOT 112A: Heifer Calf • BD: 2/24/25 • BW: 76 • Sire: HSF Frosty 99Z 128H
 Est Plan Mating EPDs: 16 -1.8 75 113 .24 9 26 63 22 12.1
 Carcass: 42.3 -.20 .25 -.03 .81 157 82

113 CS410B Bella

ASA#2927126 • BD: 3/16/14 • Tattoo: CS410B

ADJ BW 91 **HOMO BLACK POLLED PUREBRED SM COW**
 • BW Ratio 103 Nichols Manifest Z179 Nichols Manifest X49
ADJ WW 615 Nichols Beauty S259
 • WW Ratio 100 CS1007X X-Tra Good CLC Golly U Good
ADJ YW 1166 CS791N
 • YW Ratio 106

CE	BW	WW	YW	ADG	DMI	MCE	MILK	MWW	STAY
9	1.4	67	113	0.29	0.62	6	20	53	23
DOC	CW	YG	MARB	BF	REA	SF	\$GN	API	TI
11.4	38.3	-0.20	0.26	-0.068	0.46		0.084	147	74

Pasture Sire: HSF Frosty 99Z 128H from 5/9 to 11/4/24
 Est Plan Mating EPDs: 14 -1.2 76 117 .26 8 22 60 22 13.1
 Carcass: 38.5 -.20 .31 -.04 .66 157 83

114 CS426B Belinda

ASA#2927087 • BD: 4/3/14 • Tattoo: CS426B

ADJ BW 93 **HOMO BLACK POLLED PUREBRED SM COW**
 • BW Ratio 106 Nichols Manifest Z179 Nichols Manifest X49
ADJ WW 599 Nichols Beauty S259
 • WW Ratio 98 CS 136L Lynn EVS Levi 602F
ADJ YW 978 CS Ms Gretchen 708G
 • YW Ratio 89

CE	BW	WW	YW	ADG	DMI	MCE	MILK	MWW	STAY
8	0.5	50	70	0.12	0.02	5	24	49	20
DOC	CW	YG	MARB	BF	REA	SF	\$GN	API	TI
8.8	11.3	-0.23	0.14	-0.045	0.40		-0.016	124	62

Pasture Sire: HSF Honor 7729 90K from 5/18 to 11/4/24
 Est Plan Mating EPDs: 11 -6 64 100 .22 6 27 59 18 8.5
 Carcass: 30.2 -.18 .39 -.03 .59 147 78

We kept every female she produced. Richard could not wait to show off her 2024 heifer!

115 CS716E Emelyn

ASA#3336987 • BD: 3/19/17 • Tattoo: 715E

ADJ BW 91 **BLACK HOMO POLLED 5/8 SM 3/8 AN COW**
 • BW Ratio 112 IR Expedition Z673 IR Expedition W413
ADJ WW 583 IR Ms Vienna W120
 • WW Ratio 101 802U Unity Rito 4L60 of 2536 BVND 208
ADJ YW 1108 CS 136L Lynn
 • YW Ratio 104

CE	BW	WW	YW	ADG	DMI	MCE	MILK	MWW	STAY
10	2.6	81	132	0.32	1.06	5	24	64	13
DOC	CW	YG	MARB	BF	REA	SF	\$GN	API	TI
10.7	40.7	-0.26	0.63	-0.082	0.59	-0.29	0.074	138	87

Pasture Sire: CS160 Jackpot from 5/15 to 11/4/24
 Est Plan Mating EPDs: 13 -0.2 68 111 .27 8 21 56 13 12.6
 Carcass: 33.4 -.16 .55 -.04 .5 142 81

**WEDNESDAY,
APRIL 9, 2025**

**12:00 NOON
MANKATO LIVESTOCK
AUCTION MARKET,
MANKATO, KANSAS**



**SALE MANAGED BY:
EBERSPACHER ENTERPRISES INC.**
Val & Lori Eberspacher
2904 County Road 6
Marshall, MN 56258

Presorted
First Class
US Postage
PAID
SlateGroup

FIRST CLASS MAIL: PLEASE DO NOT DELAY!

Complete & Final

DISPERSAL SALE



**115 LOTS
SIMMENTAL &
SIMANGUS™**



LiveAuctions.TV

 **FIND US ON
FACEBOOK!**

Corman *Simmentals & SimAngus*