

The background of the entire poster is a light cream color, overlaid with intricate, swirling patterns in shades of gold, brown, and grey. These patterns resemble stylized orbits or nebulae. Scattered throughout these swirls are numerous small, five-pointed stars in gold and grey. On the far right, a vertical red bar runs the full height of the image, containing white text. To the right of this bar, a portion of a black circular graphic with white stars is visible.

ONE SIM

Saturday | January 15, 2022

6:30 PM MST

DENVER, COLORADO

Magie

ELITE SIMMENTAL GENETICS



Saturday, January 15th, 2022 • 6:30 PM MST

Double Tree by Hilton Denver-Stapleton North

4040 Quebec Street • Denver, CO

SALE DAY PHONES:

VAL 612.805.7405

LORI 612.805.8225

JERED 806.983.7226

DEREK 308.750.5216

Real-Time Bidding at



SUPPORT TEAM 682.816.4900

Professional Sale Management:

Eberspacher
ENTERPRISES INC.

Val & Lori Eberspacher

2904 Co Rd 6, Marshall, MN 56258

Office 507.532.6694 • Val's Cell 612.805.7405

sales@ebersale.com • www.ebersale.com

Welcome to SimMagic On Ice Volume XIII and The One Simmental Sale 2022!

The Mile High Magic is back! We are all so excited to be returning to Denver and the National Western Stock Show. After touring the NWSS facilities this fall, it is clear the intense effort has been put together by the NWSS staff and the City of Denver. "The Yards" are something to see firsthand, truly state of the art.

The combination of The One Simmental Sale and Sim Magic On Ice this year will be a power packed evening at the Double Tree. This all video auction will feature live lots, flushes, embryos and semen. The evening will start out with Miss Caitlynn Ochsner as our entertainer; the American Simmental Foundation will be featured with the fund raising "Gun & Fun items" from Eichacker Simmental; Trans Ova will once again show support for our Junior Merit program; and we will be raising support for the IL Simmental Association as they host the 2022 National Classic. Exciting evening for sure!

The genetics in this sale are truly breed highlights and stacked rich with Simmental history. An investment here will propel you ahead with genetics that will write new chapters in the history books not only in the Simmental breed but the beef industry. We are honored that the breeders in this sale are opening the gates to their finest genetics to make "The One & Sim Magic" happen.

Please give us, the breeders or our outstanding marketing team a call for assistance.

Sincerely,

Val & Lori Eberspacher

Val & Lori Eberspacher

Eberspacher Enterprises Inc.

Proud
Supporter of:

AMERICAN SIMMENTAL-SIMBRAH



WE LOOK FORWARD TO SEEING YOU ON JANUARY 15 IN DENVER, COLORADO!

2022 National Western Stock Show - Denver, CO

Please note the changes:

SATURDAY, JANUARY 15

Pen Female PTP show - 1 p.m.

COMBINED SimMagic on Ice and The One XXVIII

Sale - 6:30 p.m. (Note change!)

SUNDAY, JANUARY 16

Pen Bull PTP show and People's Choice Power

Simmental selection - 9 a.m.

MONDAY, JANUARY 17

ASA Meet-n-Greet - 10:30 a.m.

TUESDAY, JANUARY 18

Junior/Youth PTP show - 9 a.m.

WEDNESDAY, JANUARY 19

Open-class PTP bull and female shows - 8 a.m.

All National Western Shows will be live

streaming on Walton Webcasting.

WALTONWEBCASTING

AUCTIONEER:

Col. Jered Shipman806-983-7226

MARKETING AGENTS:

Val Eberspacher, EE Sales612-805-7405

Derek Vogt, EE Sales.....308-750-5216

Jered Shipman.....806-983-7226

Matt Macfarlane.....916-803-3113

Jeremie Ruble.....406-581-7940

Doug Parke859-421-6100

Mitch Armitage.....405-641-9438

Randy Rasby.....308-539-6195

Mike Sorenson.....641-745-7949

Margo Paeltz, Live Auctions937-515-1194

SETTLEMENT & TERMS OF THE SALE: Purchase prices are due immediately after the auction. It is the responsibility of the buyer to handle shipping from the location of the embryos.

- After you, the buyer, have made payment for your purchase, the seller will be notified that your purchase has been paid in full.
- It is the complete responsibility of the buyer to call the seller and request shipping or call the storage facility and extend the storage contract under your name.
- Eberspacher Enterprises Inc. or Colorado Simmental Association is not responsible for any semen or embryos not secured into the name of the new owner within one year of sale.
- The buyer is responsible for all shipping costs and/or insurance on embryos and semen.

ANNOUNCEMENTS: Announcements made sale day and from the auction block during the sale take precedence over printed material in catalog or other printed material associated with the sale. Anyone attending this sale, attends at their own risk. Eberspacher Ent., or any of the sale force will not be held responsible for any personal injury for attending this sale.

EPD: EPD listed are Fall 2021 (12-17-21).

EMBRYO GUARANTEE TO THE BUYER: Embryos are available for immediate shipping as soon as payment has been received by Eberspacher Ent., Inc. Terms of shipment are between the buyer and seller. The seller guarantees that each embryo package consists of Grade One eggs unless otherwise stated, and that they have been frozen by a reputable source. Sellers must warrant that they understand that they are responsible for guarantees made by the sales staff, and that they will help take responsible actions to insure the buyers of their lots are satisfied with their purchases.

- A. The transfers must take place in the calendar year of 2022, unless stated differently.
- B. Transfers are performed by Trans Ova or other certified embryologist facility.
- C. Buyers purchasing an embryo package that fails to establish one 60 day pregnancy will be refunded their purchase price by the seller or seller must provide same generic embryos to the buyer.

THANK YOU 2022 SPONSORS!





BID IN PERSON
OR ONLINE!
NEED NOT BE
PRESENT TO WIN!



Foundation Fundraiser 2022

Support the American Simmental-Simbrah Foundation by bidding on 10 special bottles of liquor to be auctioned off to have a chance of winning an elite rifle – **CHRISTENSEN ARMS MODEL 14, 6.5 CREEDMOOR RIFLE!**

Auctioning 10 bottles of spirits with drink glasses:

- Crown Royal
- Grey Goose
- Macallan Gold Scotch
- Don Julio House Selection Tequila
- Michael David Seven Deadly Zins Wine
- Silver Oak Cabernet Wine
- Jack Daniels BBQ Package
- George Dickel Hand Selected Barrel Bourbon

Bottles will be sold randomly throughout the night with a drawing at the end of the sale to win the gun.

Rifle set donated by Eichacker Simmental.

TWO RARE OFFERINGS ALSO AUCTIONING:

- Blanton's The Original Single Barrel Bourbon Whiskey, with the letter "A" for the collectors
- Pendleton Directors' Reserve 2019, autographed by RR Dodge

Donated by Dr. Asbby Green

CSA Fundraiser

Thank you CHART for donating a model MVE Millennium 2000 XC and the semen companies for supporting the Colorado Simmental Association in their efforts in putting on the National Western Stock Show!



TJ GOLD 274G

Homo Black, Homo Polled Purebred – ASA 3582577
– 29SM0495

Hooks Eagle x CCR Sante Fe

10 Straws donated by ABS Global

KBHR HIGH ROAD E283

Homo Black, Homo Polled Purebred – ASA 3312276
– 1SM00173

Hooks Beacon x CLRS Grade-A

10 Straws donated by Genex Cooperative

HILB ORACLE C033R

Homo Black, Homo Polled Purebred – ASA 2993610
– 551SM09032

LLSF Uprising x SS Goldmine

10 straws of Female Sorted donated by Danny Beckman, ST Genetics

SCHOOLEY STANDOUT 27G

Homo Black, Homo Polled Purebred – ASA 3585120
– 7SM122

OMF Epic x Cowboy Cut

10 Straws donated by Select Sires

TJ CHIEF 460G

Homo Black, Homo Polled Purebred
– ASA 3611575

Homo Black, Homo Polled, ½ SM, ½ AN

TJ Frosty x TJ New Time Line

10 Straws donated by Allied Genetic Resources



EVENING ENTERTAINMENT

Caitlyn Ochsner

With deep roots in agriculture and an ability to hit notes as high as the Colorado Rockies, Caitlyn Ochsner was made for country music. “True Blue”, “Country with Class” and “Real Deal” are all words that have been used to describe this talented country artist known as a “small town girl with a big-time voice.” With an undeniable passion for the western way of life, Caitlyn’s heart is found wherever a fiddle and a good story meet.

Growing up on a farm and ranch in northern Colorado, Caitlyn discovered her singing talent while competing in the Youth Idol Contest at the Weld County Fair. The opportunity, as a 17-year-old, to sing the National Anthem in front of 20,000 people at the National Finals Rodeo, fueled her passion for singing and led her to study music at Belmont University in Nashville, Tennessee.

Recently, Caitlyn released her first EP entitled “Home.” This four-song collection highlights Caitlyn’s skills as a vocalist and songwriter. The lead single, “Home,” epitomizes her authenticity as an artist and demonstrates her passion for writing songs that touch people and tell a story.

We will be auctioning
ONE CAMPING SPOT for the
2022 AJSA National Classic to be
held in Madison, WI next summer!

*Will YOU be that
lucky bidder?*





Your legacy

POWERED BY

TRANS



genetics

Your legacy

IS NOT ONLY WHERE YOU CAME FROM, BUT MORE
IMPORTANTLY, IT IS WHERE YOU ARE HEADED.
TRUST TRANS OVA TO CONTINUE YOUR LEGACY.

TRANS 
genetics

WWW.TRANSOVA.COM

866-536-3373



Your legacy

POWERED BY

TRANS



genetics

Special Lot

TRANS OVA GENETICS IS CONTRIBUTING A CERTIFICATE FOR \$1400
TOWARDS ANY SERVICE PROVIDED BY TRANS OVA.

ALL PROCEEDS WILL BE DONATED TO THE SIMMENTAL FOUNDATION TO HELP SUPPORT YOUTH ACTIVITIES.

WHETHER IT'S YOUR COW FAMILY OR YOUR OWN FAMILY,
WE ARE COMMITTED TO THE NEXT GENERATION OF CATTLE,
AND OUR CONTINUED SUPPORT OF YOUTH PROGRAMS.



Bramlets Dakota H095
Owned PB Reserve Overall
Exhibited by MaKenma Hoppa



AK/NDS Seckond Chayne
Owned PB 3rd Overall
Exhibited by Mabrey Schick



4B Honey Buns 50H
Owned PB 5th Overall
Exhibited by Maggie Griswald



Miss Catching Dreams
Owned PB 9th Overall
Exhibited by Trent Watje



Keisha
Owned PB 13th Overall
Exhibited by Katie Flitsch



TJSC Knockout 401H
Grand Champion at the 2021 NAILE



Sandeen Donna 1316
\$130,000 at Sandeen Simmental
Daughter



4B Miss Honey Butter 08J
\$280,000 Daughter

ASA#3045559
Homo Black
Homo Polled
Purebred
BD: 2-27-15

GCC Hard As Steel 144W
Yardley Utah Y361
Miss Yardley T170
WAGR Dream Catcher 03R
Miss Werning KP 8543U
Miss Werning 534R

CE	BW	WW	YW	ADG	MCE	MM	MWW	STAY
9	3.7	76	98	.14	2	16	54	10

DOC	CW	YG	MARB	BF	REA	API	TI
9.9	13.7	-.42	.26	-.066	.87	114	76

To say that Relentless is still getting it done is an extreme understatement. This guy has sired both of the PTP Ring of Champions purebreds leading the charge as we write this note. He recently sired the \$280,000 open heifer at Griswold Cattle, a \$130,000 open heifer for Sandeen Cattle Co., as well as many many other high sellers. This will be the only time H2O's will offer sexed heifer semen in 2022 and 2023; and the only conventional semen in 2022 on this superstar!

Selling 178 Units Total 3ml Sexed Heifer Semen

1: 3 Units _____
1 A: 5 Units _____
1 B: 5 Units _____
1 C: 5 Units _____
1 D: 5 Units _____
1 E: 5 Units _____
1 F: 5 Units _____
1 G: 5 Units _____

1 H: 5 Units _____
1 I: 5 Units _____
1 J: 5 Units _____
1 K: 5 Units _____
1 L: 5 Units _____
1 M: 5 Units _____
1 N: 5 Units _____
1 O: 5 Units _____

1 P: 5 Units _____
1 Q: 5 Units _____
1 R: 5 Units _____
1 S: 5 Units _____
1 T: 5 Units _____
1 U: 5 Units _____
1 V: 5 Units _____
1 W: 5 Units _____

1 X: 5 Units _____
1 Y: 5 Units _____
1 Z: 5 Units _____
1 AA: 5 Units _____
1 AB: 5 Units _____
1 AC: 5 Units _____
1 AD: 5 Units _____
1 AE: 5 Units _____

1 AF: 5 Units _____
1 AG: 5 Units _____
1 AH: 5 Units _____
1 AI: 5 Units _____

Selling 200 Units Total Conventional Semen

1 BA: 10 Units _____
1 BB: 10 Units _____
1 BC: 10 Units _____
1 BD: 10 Units _____

1 BE: 10 Units _____
1 BF: 10 Units _____
1 BG: 10 Units _____
1 BH: 10 Units _____

1 BI: 10 Units _____
1 BJ: 10 Units _____
1 BK: 10 Units _____
1 BL: 10 Units _____

1 BM: 10 Units _____
1 BN: 10 Units _____
1 BO: 10 Units _____
1 BP: 10 Units _____

1 BQ: 10 Units _____
1 BR: 10 Units _____
1 BS: 10 Units _____
1 BT: 10 Units _____



W/C Relentless 32C



HILB Miss Versace E57C
Dam



HILB Miss Dalilah H505A
\$64,000 Maternal Sister



FFS Haze H145
Reserve Champion Female Dixie
National, Maternal Sister

ASA#3794725

Red Baldy

Dbl Polled

Purebred

BD: 3-6-20

W/C Bankroll 811D

W/C Fort Knox 609F

K-LER Dolly's Queen 609D

W/C Executive Order 8543B

HILB Miss Versace E57C

AJE Ms. Chanel Y32

CE	BW	WW	YW	ADG	MCE	MM	MWW	STAY
14	-1.2	80	113	.20	6	27	67	14

DOC	CW	YG	MARB	BF	REA	API	TI
12.6	40.2	-.29	.32	-.038	1.0	143	87

Lot 2: Selling Fall Possession & 1/2 Semen Interest + Selling 50 Units Total 3ml Sexed Heifer Semen

2 A: 5 Units _____

2 B: 5 Units _____

2 C: 5 Units _____

2 D: 5 Units _____

2 E: 5 Units _____

2 F: 5 Units _____

2 G: 5 Units _____

2 H: 5 Units _____

2 I: 5 Units _____

2 J: 5 Units _____

Todd and I are super excited to offer such an elite bull in Denver. It has been my dream since I started with Simmentals in 1989 as a small boy to sell in Denver. Hard Knox has a great pedigree with an outstanding sire and the best young red donor cow in the breed. The dam to Hard Knox, HILB Miss Versace E57C, commanded \$40,000 as the high selling bred in 2019 in The One in Denver, CO. HILB Miss Dalilah H505A, a maternal sister by HILB Oracle C033R sold for a \$64,000 valuation in the 2020 Jewels of the Northland, owned with White Wing Simmentals. A second maternal sister FFS HAZE H145 by HILB Oracle C033R sold in a Fenton Farms online sale and was named. Reserve Champion Dixie National Junior Show. HILB Watermelon Sugar H6A a maternal sister to Hard Knox's dam by W/C Fully Loaded 90D sold for a \$42,000 valuation in the 2020 Jewels of the Northland Sale, Owned with Sloup Simmentals and Fenton Farms. There are numerous great females in this pedigree and Versace is a no miss cow. Hard Knox is dark red with just the right amount of white. He has outstanding EPDs & Indexes. Hard Knox is heifer safe, and his sisters are making their mark on the breed already! Please feel free to contact Todd or I about this great bull. Semen and the bull are both located at Nichols Cryo Genetics, Maxwell, LA. Semen will also be located at Trans Ova, Sioux Center, IA. We are selling 50 units of heifer 3 mil sexed semen in 5-unit packages and half semen interest and fall possession on Hard Knox in the 2022 SimMagic On Ice Sale in Denver, Colorado. Fall possession will start in the fall of 2022. His stock is going up and he is going to prove to be the best red baldy bull in the breed! He will be CSS and Canadian Qualified prior to the sale date.



*FFS JNR
Hard Knox H034*



ASA#3847828
Black Dbl Polled
1/2 SM 1/2 AN
BD: 4-16-20
Tattoo: H01
Adj BW: 78 ET
Adj WW: N/A

Gambles Hot Rod
Silveiras Style 9303
Silveiras Elba 2520
Mr. HOC Broker
STF Bianca BX33
STF Onyx 451W

CE	BW	WW	YW	ADG	MCE	MM	MWW	STAY
11	2.2	63	95	.20	4	15	46	13

DOC	CW	YG	MARB	BF	REA	API	TI
6.7	16.3	-.12	.19	-.021	.30	109	63

AI Sire: WHF/CCS/JS Double Up G365 on 5-17-21

Due: 2-27-22

Est Plan Mating EPD: 13 .55 67 92 .16 6 19 52 13 9.0

Carcass: 11.45 -.30 .06 -.05 .60 110 65

HRM Ms Style H01 is a direct daughter of the proven and powerful STF Bianca BX33 "Becca". Maternal sibs to H01 have topped some of the nations most influential sales over the past few years and we expect this daughter to do the same. Last year at the Bricktown National Sale in OKC, a PVF Blacklist daughter of BX33 topped the bred heifer division to XTB Cattle Company and a few short weeks later was crown Champion at the Dixie National in Mississippi. H01 might be the most complete BX33 daughter to be offered for sale to date - massive in her center body, flawless structure and as attractive thru her front 1/3 as we could ask. Bred to WHF/CCS/JS Double Up G365 should only compliment her structural integrity and earning potential. The hard work has been done, proven genetics and stunning phenotype. Bid with confidence on this outstanding female.



WHF/CCS/JS Double Up G365
Service Sire



HRM Ms Primo E07
Maternal Sister



HRM Ms Pay The Price G03
Maternal Sister

ASA#2864714

Black Baldy

Dbl Polled

Purebred

BD: 1-18-14

SVF Steel Force S701

Mr. HOC Broker

JM BF H25

STF Dominance T171

STF Onyx 451W

GCF Miss Caliente

PBSM • EMBRYOS

4: Selling 3 #1 Sexed IVF Female Embryos by JSUL Something About Mary 8421 (SAM)

Pedigree of Sire: W/C Relentless 32C x JBSF Proud Mary

Est Plan Mating EPD: 11 3.7 73 103 .19 3 18 55 11 8.1

Carcass: 25.0 -.39 -.03 -.08 .81 106 67

PBSM • EMBRYOS

4A: Selling 3 #1 Sexed IVF Female Embryos by WLE Copacetic E02

Pedigree of Sire: HPF Quantum Leap Z952 x CMFM Joy 02ZB

Est Plan Mating EPD: 11 3.05 78 114 .23 4 21 60 11 4.95

Carcass: 25.9 -.43 -.06 -.09 .85 111 71

Seller guarantees one (1) 60 day pregnancy per three embryos transferred if implantation is performed by a certified embryologist.

STF Bianca BX33 "Becca" can now claim to be the most productive and influential STF Onyx 451W daughter in production. In 2015, she had a storied show career - 5th Overall at National Jr Show, Champion at the historic Iowa State Fair and Reserve Champion at the American Royal to name just a few. It has not stopped there for "Becca", her influence as a donor has been second to none and she has proven to consistently work to different sires and stamps the progeny with style, consistency and power. She has put 3 daughters in the Top 10 of the Bred and Owned Division at the National Jr Show, and now her influence has topped some of the nations best sales as bred females. Six daughters have sold over the past 3 years averaging over \$9,000/head. The matings to WLE Copacetic and Something About Mary (SAM) represent some of the highest potential opportunities to make the next generation of influential purebreds from the storied Onyx cow family. Do not pass the opportunity to start 2022 off on the right foot!



JSUL Something About Mary
Embryo Sire



WLE Copacetic E02
Embryo Sire



HRM Ms Blacklist G06
High selling bred heifer
2021 Oklahoma City



ASA#3971949
Black Dbl Polled
Purebred
BD: 2-15-20
Tattoo: 38BH
Adj BW: 84
Adj WW: N/A

Remington Lock N Load 54U
W/C Loaded Up 1119Y
Aubreys Black Blaze III
W/C United 956Y
VPF/DANR Reflection 238B
SS Ebonys Reflection

CE	BW	WW	YW	ADG	MCE	MM	MWW	STAY
11	2.3	79	121	.26	6	24	63	14

DOC	CW	YG	MARB	BF	REA	API	TI
10.1	37.8	-.41	.03	-.079	1.02	119	75

AI Sire: GSC GCCO Dew North 102C on 5-8-21

Due: 2-14-22

Est Plan Mating EPD: 13 1.3 84 121 .23 7 23 65 11 10.4

Carcass: 32.75 -.45 -.02 -.08 1.05 120 79

We had sold the mother of this female as a bred heifer and when we saw her 3 summers ago, we felt we needed her back in our program to be our new lead donor. This bred by Loaded Up is as nice of a bred as we have offered in Denver. Bred to Dew North on May 8 with no bull exposure. We could write a book about the generations of consistency in her lineage but we will let the heifer speak for herself.



GSC GCCO Dew North
AI Sire



DANR/VPF Ambition 88J
Fort Knox Maternal Sister



SS Ebonys Reflection
Grandam

ASA#3778415
Black Dbl Polled
3/4 SM 1/4 AN
BD: 3-15-20
Tattoo: 26H
Adj BW: 75
Adj WW: N/A

HTP/SVF Duracell T52
HPF Quantum Leap Z952
RP/MP Right To Love 015U
Silveiras Style 9303
DANR Angel 126F
LLSF Angelica Y1215

CE	BW	WW	YW	ADG	MCE	MM	MWW	STAY
12	1.6	79	113	.21	5	21	60	11

DOC	CW	YG	MARB	BF	REA	API	TI
7.9	27.8	-.32	.15	-.063	.74	111	74

AI Sire: W/C Night Watch 84E on 5-17-21

Due: 2-23-22

Est Plan Mating EPD: 15 -.75 79 111 .20 7 27 67 13 12.95

Carcass: 26.3 -.32 .19 -.05 .80 139 83

This heifer was purchased as an open from the Danner Family for my son to show with the intention of selling her as a bred so he could get a heifer to show again this coming summer. Angel 26H is definitely not a slouch. I could go into a long history on her pedigree but as you can see there is a ton of prominent names there both from the Simmental side and the Angus side. Bred on May 17 to Night Watch with no bull exposure.



W/C Night Watch 84E
AI Sire



ASA#3803830
Black Dbl Polled
5/8 SM 3/8 AN
BD: 5-17-20
Tattoo: 1H
Adj BW: N/A
Adj WW: N/A

W/C Bullseye 3046A
Lees Makers Mark
Lees Dixie Erica 2077
K-LER Kingsman 610D
Lees Dixie Erica 8408
Lees Dixie Erica 6404

CE	BW	WW	YW	ADG	MCE	MM	MWW	STAY
10	-.1	75	121	.29	4	20	57	14

DOC	CW	YG	MARB	BF	REA	API	TI
12.5	28.0	-.22	.26	-.044	.59	123	76

AI Sire: THSF Lover Boy B33 on 5-23-21

Due: 3-1-22

Est Plan Mating EPD: 12 -.4 80 121 .26 5 23 63 15 15.2
Carcass: 25.3 -.30 .34 -.05 .73 137 82

The Fabrizio family has had a long standing tradition in the Colorado livestock industry. This daughter of Lees Cattle Company Jr. herd sire, Makers Mark, are the type of cows that Fabrizio's Ranah are putting back into the livestock industry. Her mother is foundation sired by the \$55,000 valued Kingsman daughter donor for this herd. Be the first to get in one the ground floor of this future brood cow prospect. She has toted purple - winning the Simmental Solution Grand Champion at the Colorado State Show as well as division champion at the Great Northern Livestock Exposition. Her mother was lead off in the 2019 Reserve Pen of Percentage Females at the NWSS.

Lees Dixie Erica 8408

Dam was lead off beifer of the 2019 Reserve Pen of Percentage Females NWSS



THSF Lover Boy
AI Sire

ASA#3796073

Hetero Black Baldy

Dbl Polled

Purebred

BD: 3-21-20

Tattoo: 082H

Adj BW: 84

Adj WW: 658

MCM Top Grade 018X

KLER No Worries

K-LER Daphne 094X

W/C Executive Order 8543B

K-LER/HLL Lucille 812F

KLER Sweetness

CE	BW	WW	YW	ADG	MCE	MM	MWW	STAY
9	2.3	86	128	.26	5	25	68	13

DOC	CW	YG	MARB	BF	REA	API	TI
9.6	35.5	-.37	.25	-.087	.81	129	85

AI Sire: THSF Lover Boy B33 on 5-9-21

Due: 2-15-22

Est Plan Mating EPD: 12 .8 86 124 .24 6 25 68 14 13.75

Carcass: 29.05 -.38 .34 -.08 .84 146 89

Once again, the Hill Brothers and KLER Cattle are selling a bred beifer that is top shelf. Val asked Paul, "why would you even sell this cow?" The Lucille cow line stems from past Denver champion Sweetness cow that has produced many champions for the KLER herd. This female is as good as a bred purebred you will find for sale. To add to it being bred to Lover Boy might just carry on the champion cow line.



KLER Sweetness
Granddam



THSR Lover Boy
AI Sire

LEE CATTLE COMPANY HAS BROUGHT THE HEART OF THEIR SIMMENTAL PROGRAM
TO TOWN. OFFERING ALL THREE FEMALES FOR SALE!

ONE and **SIM** *Magie*

9

LEES DIXIE ERICA 1110J



ASA#3965376
Black Baldy
Dbl Polled
1/2 SM 1/2 AN
BD: 2-22-21
Tattoo: 1110J
Adj BW: 86
Adj WW: N/A

B C Lookout 7024
HILB Olympus B27U
HS Stop And Stare U118L
HILB Maverick A43
Lees Dixie Erica 6065
Lees Dixie Erica 4166

CE	BW	WW	YW	ADG	MCE	MM	MWW	STAY
11	1.2	67	103	.22	4	22	55	10

DOC	CW	YG	MARB	BF	REA	API	TI
9.6	24.0	-.21	.25	-.40	.56	111	70

This HILB Olympus daughter is an absolute powerhouse. Huge topped, big middled, sound and good looking to boot. This one is special with a truly outcross pedigree.



HILB Olympus B27U
Sire

ONE and SIM *Magie*

9A

LEES DIXIE ERICA 1299J

ASA#3965378
Black Dbl Polled
3/4 SM 1/4 AN
BD: 2-22-21
Tattoo: 1299J
Adj BW: 84
Adj WW: N/A

TJ High Calibre 556B
KCC1 Folsom 512F
CCR Ms. Misty May 8014U
Ruby NFF Excalibur 002X
Lees Dixie Erica 3004
Lees Primrose 0163



KCC1 Folsom 512F
Sire

CE	BW	WW	YW	ADG	MCE	MM	MWW	STAY
9	2.0	76	122	.29	4	22	60	16

DOC	CW	YG	MARB	BF	REA	API	TI
10.2	40.0	-.23	.20	-.063	.64	119	73

This Folsom daughter brings the power to cow power. Folsom is the new and coming herd sire for Lees Cattle and Kerns Cattle Company. This will be the first daughter offered for sale and is one you won't want to miss out on.



ONE and SIM *Magie*

9B

LEES DIXIE ERICA 1113J

ASA#3965377
Black Baldy Dbl Polled
3/4 SM 1/4 AN
BD: 3-8-21
Tattoo: 1113J
Adj BW: 88
Adj WW: N/A

W/C Loaded Up 1119Y
W/C Bankroll 811D
Miss Werning KP 8543U
HILB Maverick A43
Lees Dixie Erica 5548
Lees Mabel 1716



W/C Bankroll 811D
Sire

CE	BW	WW	YW	ADG	MCE	MM	MWW	STAY
12	1.6	71	105	.21	6	25	61	9

DOC	CW	YG	MARB	BF	REA	API	TI
10.6	25.8	-.36	.21	-.065	.84	108	72

Bankroll daughters speak for themselves. This is a classy cat who will be hard to beat in the show ring and will hit the donor pen running.



ASA#(3939064)
Black Homo
Polled
3/4 SM 1/4 AN
BD: 5-5-21
Tattoo: 092J
Adj BW: 62 Twin
Adj WW: N/A

K-IER Statesmen 738E
KLER Linebacker 05G
Ruby SWC Yetti D655
G A R Prophet
KMJ/K-IER Ms. Prophet D3008
CCR Ms. Singletary 3000A

CE	BW	WW	YW	ADG	MCE	MM	MWW	STAY
10	3.7	101	156	.34	6	23	74	11

DOC	CW	YG	MARB	BF	REA	API	TI
11.9	46.8	-.18	.54	-.024	.85	136	96

This May baby might be one of the best percentage females we have ever raised. She's got a striking look to compete for those in the show ring, but EPDs to make phenomenal bulls once she is flushed. She is in the top 4% in 4 and top 15% in 7 different traits while still being an outcross to some of the breeds leading genetics. This allows for huge breeding flexibility. A half sib in blood brought \$35,000 in Roman Schooley 2021 Production Sale and sold to River Creek Farms of Kansas. The last time we were this fired up on a female, she sold for \$25,000 to Werning Cattle and produced over \$250,000 in progeny sales her first year. Her sire KLER Linebacker was a favorite of many in our Champion Pen of 5 in 2019, and he's out producing himself in his first calf crop. Ms. Prophet is structured for success in all aspects of the Simmental industry. KLER reserves the right to 2 flushes or 12 embryos.

KLER Linebacker 05G
Sire



ASA#3096741
Homo Black
Homo Polled
Purebred
BD: 1-8-16
Tattoo: D336
Adj BW: 78
Adj WW: 786

GW Premium Beef 021TS
GW Robust 605Z
GW Miss GPRD 123X
Triple C Singletary S3H
CCR Ms. Singletary 3000A
CCR 602ML One 7116T

CE	BW	WW	YW	ADG	MCE	MM	MWW	STAY
9	2.2	103	153	.31	4	27	79	18

DOC	CW	YG	MARB	BF	REA	API	TI
14.0	46.1	-.46	.76	-.076	1.30	174	109

Sells OPEN and Ready to FLUSH!

D336 is one of the more exceptional females that combines phenotype and an outstanding genetic profile. Ranking in the top 3% in 9 different traits, top 2% in API, and top 1% in TI. Her first calf was a \$30,000 valuation bull, KLER Franchise 804F is now running at Hart Simmentals, and the Franchise calves will be a sale highlight at our 2022 Production sale on February 20th. She's a bull making machine, and her sons have been sold to other top-notch herds - Tekrony Brothers, SD and White Wing Simmentals, AR. Her daughters are just as good or better and will soon be making their way into the donor pen next year. The genetic merit that this female offers will make her a slam dunk investment for years to come. She is currently averaging 8 frozen eggs per flush and has given up to 35 eggs in one crack. She is structured for profitability and is OPEN, READY TO FLUSH!



KLER Franchise 804F
\$30,000 Valuation son



ASA#3926808
Black Dbl Polled
Purebred
BD: 2-16-21
Tattoo: J450
Adj BW: 67 Twin
Adj WW: N/A

TNGL Imprint D989
J2/CMB Paramount F812
HSF Mariah B403
DMCC Elijah 48E
TPHT Rumba G450A
TPHT Cha Cha A450W

CE	BW	WW	YW	ADG	MCE	MM	MWW	STAY
10	2.0	65	101	.23	5	18	50	10.8

DOC	CW	YG	MARB	BF	REA	API	TI
10.9	22.7	-.51	.03	-.106	.94	108	67

Well, well well, this guy brings a little something to the table. J450 stems from a line of maternal gems that have worked their way to the top the old fashion way, by weaning big calves and producing females that one keeps in the herd. J450's dam, TPHT Rumba was a standout in the show ring, garnering purple and top accolades at every show entered: Calf Champion at Utah State Fair; Reserve Champion Simmental female (as a June baby) at NILE; 19th overall B&O purebred at Junior Nationals in Brookings. J450's outcross sire had his share of purple as well, and TPHT Prince J450 is indeed following in their footsteps being awarded Calf Champion at Utah State Fair and Reserve Champion Bull at NILE. J450 brings balance in all realms of study, from epds to structural correctness. From a birth weight of 64# to 689# at 201 days, you can forget he was a twin. A bull worthy of a royal designation = TPHT Prince J450.



TPHT Rumba G450A
Dam



TPHT Prince J450
2021 Reserve Champion NILE Bull

PICK OF THE 2021 HEIFER CALVES AT EICHACKER SIMMENTALS



ES G36

*We are extremely proud to offer an opportunity that has never been offered by us before. We are opening the gate and selling choice of our entire open heifer pen. As Eichacker Simmentals approaches 50 years of breeding Simmental cattle, we've seen many trends come and go. A little quick math would say there have been more than 10,000 Simmental matings produced over those 50 years. Those matings have been sorted and culled over the years to get to where we are today. We've never been an operation to put much emphasis into selling our open heifers as we have always prided ourselves in offering some of our top genetics as breds and quite honestly, they sell themselves. Over the years we have incorporated a fair amount of E-T work to where we have been putting in 80-100 embryos per year. **The lucky bidder will have the opportunity to select from 100+ heifers.** We would like the selection to take place by 4-1-2022 and would be happy to email a spreadsheet with the heifer info upon request.*



ES F47



ES E130



ES D84



ASA#3780701
Black
Dbl Polled
1/2 SM 1/2 AN
BD: 3-17-20

Gambles Hot Rod
Silveiras Style 9303
Silveiras Elba 2520
LLSF Uprising Z925
HILB Miss Oo La La B412
AJE Gabby R7

Selling Flush to Bull of Choice

Seller is guaranteeing 6 grade one embryos with an open top on an IVF flush. Buyer assumes all costs associated with the flush and provides semen. All embryo work will be done at DeWitt Veterinary Clinic.

Unicorn? Maybe not, but this bovine is pretty special and the opportunity is yours to get in on this exciting upcoming donor. Wedge built, square hocked, great feet, flat shouldered, square wide pinned, awesome rib shape and sexy! She was born to be a show heifer and she did just that. Karen, as we refer to her around here, just came off an incredible show season for our daughter, McKenna. She was most recently Champion Sim Solution and 3rd Overall Junior Heifer at the NAILE, but has also captured Supreme titles at the Iowa State Fair 4-H and open shows, as well as World Beef Expo. She was also 3rd overall percentage female at Simmental Junior Nationals in Grand Island this past summer. Karen is backed by powerful genetics. Her dam, Miss OO La La, an Uprising daughter, raised by Hilbrands Cattle Co sold in The One Sale in 2015. And her sire, Style, needs no introduction as he is one of the most consistent bulls in the show cattle industry. Karen is due to calve after the first of the year and will be available to flush early spring.



HILB Oo La La B412
Dam



Harkers Honey Bea H116
2021 World Beef Expo
Supreme



Harkers Honey Bea H116
Supreme Heifer Champion
Iowa State Fair 2021

ASA#2637396

Red

Dbl Polled

Purebred

BD: 9-7-11

TNT Top Gun R244

JF Milestone 999W

Ms. Maxie Lou M112S

CNS Dream On L186

WHF Sierra 245S

WHF Black Jasmine240J

15: Selling IVF Cycle Flush to Bull of Choice

Guarantee of ten (10) embryos on the IVF Cycle Flush.

PB SM • EMBRYOS

15A: Selling 4 #1 IVF Heifer Embryos by JSUL Something About Mary 8421 (SAM)

Pedigree of Sire: W/C Relentless 32C x JBSF Proud Mary

Est Plan Mating EPDs: 9 3.45 79 112 .21 5 16 55 14 8.4

Carcass: 23.9 -.44 .05 -.09 .85 119 73

1/2 SM • EMBRYOS

15B: Selling 4 #1 IVF Heifer Embryos by PZC TMAS Firestorm 1800 ET

Pedigree of Sire: Red Six Mile Sakic 832S x GT Cita 4060

Est Plan Mating EPDs: 10 1.4 70 103 .21 7 21 56 15 12.25

Carcass: 10.7 -.24 -.01 -.07 .25 108 64

Seller guarantees two (2) 60 day pregnancy per four embryos transferred if implantation is performed by a certified embryologist.

Embryos produced may utilize reverse sort technology if semen is quality to reverse sort. Work will be done at Polzin Embryo Center. Buyer responsible for only flush and semen cost. Polzin Cattle pays boarding. Never before have SAM embryos been offered. Get in on the ground floor with this fresh mating. This will be an exciting first time mating to produce industry leading red Sim-Angus genetics at their finest. Firestorm continues to produce some of the Red Angus breeds most valuable females as well as multiple National Champions. Unique opportunity here. Embryos available February 2022. Alley is one of the greatest cows to work in the Simmental breed.



\$20,000 many time champion
Owned by Trennepohl Farms



CNS/HFS/JW Alley F221
\$28,000 Daughter



PZC TMAS Firestorm
Embryo Sire



JSUL Something About Mary
Embryo Sire



ASA#2550419
Black
Dbl Polled
Purebred
BD: 2-10-10

CNS Dream On L186
HTP SVF In Dew Time
HTP SVF Honeydew
PCC Night Moves H10
HHHF Black Glitter
HHHF Black Matilda

16: Selling Conventional Flush to Bull of Choice

Seller is guaranteeing 6 grade one embryos with an open top on an Conventional flush. Buyer assumes all costs associated with the flush and provides semen.

PB SM • EMBRYOS

16A: Selling 3 #1 Conventional Embryos by W/C Bet On Red 481H

Pedigree of Sire: W/C Fort Knox 609F x W/C Angel 7113E
Est Plan Mating EPDs: 14 .15 75 106 .20 7 24 62 13 14.35
Carcass: 31.8 -.41 .22 -.08 .93 136 81

PB SM • EMBRYOS

16B: Selling 3 #1 Conventional Embryos by W/C Bet On Red 481H

Pedigree of Sire: W/C Fort Knox 609F x W/C Angel 7113E
Est Plan Mating EPDs: 14 .15 75 106 .20 7 24 62 13 14.35
Carcass: 31.8 -.41 .22 -.08 .93 136 81

Seller guarantees one (1) 60 day pregnancy per three embryos transferred if implantation is performed by a certified embryologist.



W/C Bet On Red481H
Embryo Sire



HILB/SHER Data Breach
Son

Maternal Sibs to the NAILE and NW'SS Grand Champion Bull, Data Breach. This new mating to the exciting new Bet On Red could be her best yet. Or you can Flush her to the Bull of your choice. She is open and ready to flush. Guaranteeing 6 grade 1's with an open top. Her last flush netted 28 grade 1's and she's averaged 15 on her last 7 flushes! Buyer to pay flush costs and provide semen. This will be the only flush sold at public auction on Glitter Time 012X.

ASA#3555777
Black
Dbl Polled
3/4 SM 1/4 AN
BD: 2-1-16

GWS Ebonys Trademark 6N
Remington Secret Weapon 185
Aubreys Black Blaze II 5T
Lazy H Pathfinder R104
4/B Miss Pathfinder 88X
SAR 518 Fame 1335

PB SM • EMBRYOS

17: Selling 3 #1 IVF Reverse Sort Heifer Embryos by W/C Relentless 32C

Pedigree of Sire: Yardley Utah Y361 x Miss Werning KP 8543U
Est Plan Mating EPDs: 11 3.05 75 102 .17 4 15 53 8 9.35
Carcass: 25.8 -.37 .18 -.07 .80 114 74

PB SM • EMBRYOS

17A: Selling 3 #1 IVF Reverse Sort Heifer Embryos by JSUL Something About Mary 8421

Pedigree of Sire: W/C Relentless 32C x JBSF Proud Mary
Est Plan Mating EPDs: 12 2.7 75 106 .20 5 17 54 8 9.7
Carcass: 33.7 -.35 .11 -.08 .79 113 73

3/4 SM • EMBRYOS

17B: Selling 3 #1 IVF Reverse Sort Heifer Embryos by W/C Fort Knox 609F

Pedigree of Sire: W/C Bankroll 811D x K-LER Dolly's Queen 609D
Est Plan Mating EPDs: 13 1.3 78 113 .22 7 22 61 10 10.9
Carcass: 33.85 -.33 .31 -.06 .90 131 82

Seller guarantees one (1) 60 day pregnancy per three embryos transferred if implantation is performed by a certified embryologist.

41D continues to leave her mark in the Simmental breed as one of the great Secret Weapon daughters. Starting out with her first two heifer calves by Relentless named as Champion and Reserve Champion Spring Heifer Calves at the American Royal, and last year, 4B Honey Bun 50H sold for \$62,000 at Griswold Cattle Co. and goes on to be 5th Overall Purebred Heifer at the AJSA Classic and Grand Champion at the 2021 American Royal. This year, 4B Ms Honey Butter walked through the ring at Griswold Cattle Co and commanded a price tag of \$280,000. Proven genetics, proven winners and flat good!



4/B Ms Honey Butter
\$280,000 Daughter, Full Sib to Lot 17



4/B Honey Buns 50H
\$62,000 Daughter, Full Sib to Lot 17



W/C Relentless 32C
Embryo Sire



JSUL Something About Mary
Embryo Sire



W/C Fort Knox 609F
Embryo Sire



ASA#3308244
Red
Homo Polled
Purebred
BD: 4-7-17

W/C United 956Y
W/C Executive Order 8543B
Miss Werning KP 8543U
WS Pilgrim H182U
WAGR Melody 5076C
3C Melody M668 BZ

PB SM • EMBRYOS

**18: Selling 3 #1 Sexed Heifer Embryos by
HPF Quantum Leap Z952**

Pedigree of Sire: HTP/SVF Duracell T52 x RP/MP Right To Love 015U
Est Plan Mating EPDs: 13 1.55 84 120 .23 6 24 66 9 8.45
Carcass: 27.3 -.41 .17 -.09 .82 125 83

PB SM • EMBRYOS

**18A: Selling 3 #1 IVF Reverse Sort Heifer Embryos
by JSUL Something About Mary 8421**

Pedigree of Sire: W/C Relentless 32C x JBSF Proud Mary
Est Plan Mating EPDs: 12 2.05 76 108 .20 5 22 60 10 9.7
Carcass: 22.75 -.36 .17 -.07 .72 122 77

Seller guarantees one (1) 60 day pregnancy per
three embryos transferred if implantation is
performed by a certified embryologist.



HPF Quantum Leap
Embryo Sire



JSUL Something About Mary
Embryo Sire

The E.O. daughters are quickly becoming generators for all that own the ones in production. This mating was featured a year ago in Oklahoma City at The Congress and it was well received. We were fortunate enough to make several from this young donor and the mating is available to the highest bidder once again. We strongly feel that Quantum Leap will compliment this powerful red head's power, body, and width. He always sires a loose, unique hind leg and pastern set in his offspring with extra front third extension and presence. Tie on with confidence and know that this mating will not be made again for public appraisal. We await the arrival of these this spring in our own program with the high probability of being the color of high demand this sale season. Red is in once again! It's simply incredible how we nearly depleted the breed from the red hide color and how quickly the population was regenerated with quality stock through the hetero black stock available. To this point in his short career, S.A.M has sired dominantly black hided stock, however back on a red cow that gene may just become stronger and more dominant. There's no doubt that 476E will compliment well with the popular sire of choice. The substance, power, and over all look could simply be stellar in nature and the ideal dark red that generates interest and return on investment.

ASA#3021975
Hetero Black
Homo Polled
Purebred
BD: 4-2-15

CNS Dream On L186
WS Pilgrim H182U
WS Marla 276M
Hart Subzero G322
3C Melody M668 BZ
3C Crocus G374 BZ

PD SM • EMBRYOS

Selling 3 #1 Conventional Non-Sorted Embryos by EC Rebel 156F

Pedigree of Sire: Profit x DSFF Countess 357D
Est Plan Mating EPDs: 6 5.2 76 108 .20 2 20 58 10 4.45
Carcass: 18.0 -.44 .16 -.10 .69 108 72

Seller guarantees one (1) 60 day pregnancy per three embryos transferred if implantation is performed by a certified embryologist.

This is the Pilgrim x Melody female that fell under the radar at Wager and CK Cattle when she was loaded and sent to Texas. She is one that has always been just bigger, longer, and stouter at every angle. She is the dam of the 476E and the maternal granddam of the \$85,000 SWC Red Wave. I have always admired her ability to produce and wean the big heavy cattle of the crop. The mating to Rebel should be big footed, stout constructed, bold bodied, with added width and power. Rebel has done a very nice job across the country, keeping all the goods in place in the right package with high demand and profitable results. In my travels over the past couple of years this sire group has influenced females that have commanded a load with the most recent Lot 16 in the Hartman Customer Appreciation Sale commanding \$225,000 to Herbst, Lot 49 in The Advantage Sale at Udell Cattle Co brings \$55,000 to the Richardson Family of Kansas, and a year ago at the same venue Red River Farms ties into a daughter of the \$190,000 Princess for \$77,000 that will be instrumental in that program moving forward without question. There will be bulls sold in the Spring of 2022 that represent this sire group that will be sale features in several places and well deserved. Rebel is proving to be as good as he looks and on this solid black, Heterozygous Black female noted for length, performance, and substance, it should equal great purebred seedstock with a high probability of the color RED on the way.



EC Rebel 156F
Embryo Sire



SWC Red Wave 376J
\$85,000 Grandson



ASA#2660685
Red
Homo Polled
3/4 SM 1/4 AR
BD: 4-11-11

Hooks Shear Force 38K
Hooks/KS Sequoia 35S
Hooks Nicole 15N
Remington Red Label HR
ASR Ms. Super Baldy U851
PWA Miss Red Logan M216

PB SM • EMBRYOS

20: Selling 3 #1 IVF Reverse Sort Heifer Embryos by JSUL Something About Mary 8421

Pedigree of Sire: W/C Relentless 32C x JBSF Proud Mary
Est Plan Mating EPDs: 9 3.45 76 109 .21 5 24 62 14 11.7
Carcass: 28.15 -.40 .18 -.07 .93 125 75

PB SM • EMBRYOS

20A: Selling 3 #1 IVF Reverse Sort Heifer Embryos by So Remedy 7F

Pedigree of Sire: HPF/Hill Uprising C104 x B&K Cream Soda 8D
Est Plan Mating EPDs: 10 2.6 78 117 .25 6 27 66 14 15.55
Carcass: 29.85 -.43 .07 -.08 .95 123 76

PB SM • EMBRYOS

20B: Selling 3 #1 IVF Reverse Sort Heifer Embryos by LLW Card True North G71 (Exportable)

Pedigree of Sire: GSC GCCO Dew North 102C x Cox's Joy Princess 711E
Est Plan Mating EPDs: 9 2.25 76 106 .19 5 26 64 15 10.7
Carcass: 21.65 -.45 .14 -.08 .97 126 76

Seller guarantees one (1) 60 day pregnancy per three embryos transferred if implantation is performed by a certified embryologist.



W/C Bank On It 273H
\$202,000 Son



LLW Card True North G71
Embryo Sire



So Remedy 7F
Embryo Sire



JSUL Something About Mary
Embryo Sire

Every year KS Miss Sequoia Y770 continues to add to her legacy as one of the most elite donors in the Simmental breed. She has produced some of the hottest selling progeny to hit the market in the last few years. Natalie, a loaded up red baldy daughter sold for an unbelievable \$80,000 in Werning's 2018 bred heifer sale and just this spring W/C Bank On It, sired by Bankroll, sold for a staggering \$202,000 to Griswold Cattle. Sequoia has had dozens of heifers and bulls sell for over \$10,000 just in the last few years and there is no end in sight. These new matings to Sequoia will just add to her already stellar legacy.

ASA#3277323

Red

Dbf Polled

Purebred

BD: 3-9-17

W/C United 956Y

W/C Executive Order 8543B

Miss Werning KP 8543U

SVF Steel Force S701

AJE Ms. Chanel Y32

BHS JF Antoinettes Joy

PB SM • EMBRYOS

Selling 5 #1 IVF Reverse Sort Heifer Embryos by Bar CK Red Empire 9153G

Pedigree of Sire: IR Imperial D948 x WS Miss Northstar B180

Est Plan Mating EPDs: 18 -2.15 74 108 .22 8 28 65 17 13.45

Carcass: 19.15 -.42 .26 -.07 .89 154 85

Seller guarantees two (2) 60 day pregnancy per three embryos transferred if implantation is performed by a certified embryologist.

Like high heels and fine wine... some of the best things in life are RED! This could be one of the most exciting red mating's of the season with Versace and the hot upcoming stud, Red Empire. RE's first babies are about to hit the ground and we believe you're going to want to be on the upward swing when they start catching attention. Satche continues to knock it out of the park with progeny like the \$64,000 Dalilah, new donor for White Wing Simmentals and Hilbrands Cattle, and the 2021 Mississippi State Fair Supreme Junior Female for the Moreno Family. Bid with confidence because you know these will be gorgeous red heads!

SLOUP SIMMENTALS Bill Sloup 402-641-5132

DELING FARMS Brian Deling 712-209-2960

FENTON FARMS Todd Fenton 601-498-4946

& HILBRANDS CATTLE COMPANY

Mark Hilbrands 320-894-5953

Amanda Hilbrands 507-828-7089



Bar CK Red Empire
Embryo Sire



HILB Miss Dalilah H505A
\$63,000 Daughter



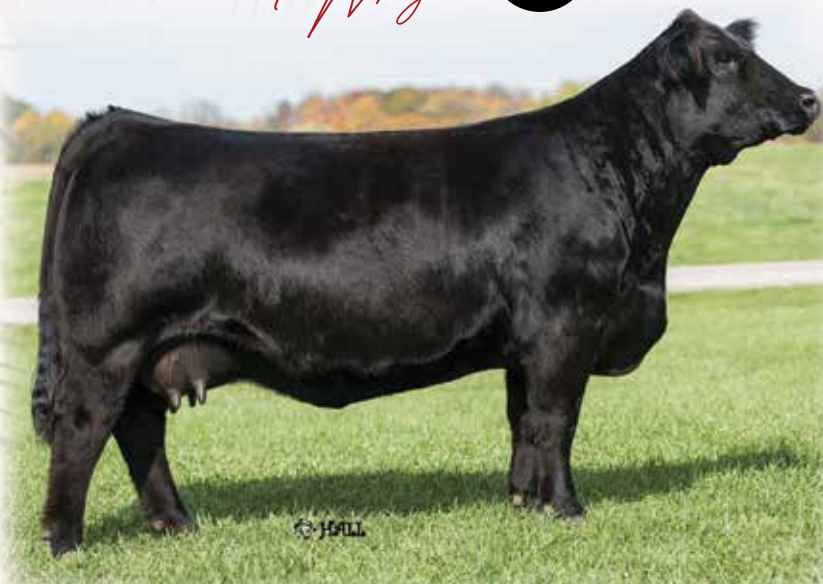
HILB/SHER On The Verge
\$12,000 Daughter



FFS JNR Hard Knox H034
Son selling interest as Lot 2

ASA#2584182
Black
Dbl Polled
Purebred
BD: 2-8-11

Ellingson Legacy M229
Mr. NLC Upgrade U8676
Ms. NLC Mojo S6119 B
SS Goldmine L42
Miss Knockout 74T
Slow Poke 74R



22: Selling Heifer Pregnancy by W/C Relentless 32C • Due June 2022

Pedigree of Sire: Yardley Utah Y361 x Miss Werning KP 8543U
Est Plan Mating EPDs: 7 4.25 81 112 .20 1 20 61 11 7.55
Carcass: 18.45 -.51 .21 -.10 .93 117 78

I can't think of a single thing to write that you don't already know about this mating, king of the ring x the 3rd most prolific cow in Simmental history. I wish I knew how many champions this sire and dam have individually produced that then went on to be awesome breeding animals. Can you guess how many? The recip cow is a 4-6 year old red model non-registered Sim.Angus that is quiet and easy keeping.

PB SM • EMBRYOS

22A: Selling 3 #1 IVF Non-Sorted Embryos by KCC1 Countertime 872H

Pedigree of Sire: ES Right Time FA110-4 x KCC1 Havana 83E
Est Plan Mating EPDs: 8 3.15 84 125 .26 2 22 63 14 8.3
Carcass: 29.00 -.51 .17 -.12 .93 127 80

PB SM • EMBRYOS

22B: Selling 3 #1 IVF Non-Sorted Embryos by ES Right Time FA110-4

Pedigree of Sire: Welshs Dew It Right 067T x ES A110
Est Plan Mating EPDs: 6 3.9 86 131 .28 1 23 57 14 7.8
Carcass: 31.35 -.45 .18 -.11 .86 126 81

Seller guarantees one (1) 60 day pregnancy per three embryos transferred if implantation is performed by a certified embryologist.



KCC1 Countertime
Embryo Sire



STCC TFG Rory 005J
\$150,000 High Selling Berwick
daughter at 2021 Right By
Design Sale



STCC TFG Jasmine 010J
\$20,000 High Selling Blacklist
daughter at Right By Design Sale



STCC Serena's Gift 0173
Daughter by Blacklist

A true sale attraction! Here is your chance to acquire genetics from one of the most decorated cows in the ASA herdbook, HF Serena. Her name is synonymous for quality and consistency. This cow never misses and has generated over 2 million in lifetime progeny sales. A champion producing champions and high sellers still at ten years of age. Her latest accomplishments include: STCC Serena's Gift 0173, a Blacklist daughter, who is undefeated in the fall percentage division, while being selected as Res Grand Champion Open Female 2021 NAILE and Grand Percentage Open and Jr Female 2021 Simmental Breeders Sweepstakes. Another daughter STCC TFG Rory 006J topped the Right By Design sale at \$150,000. That sale featured 9 direct Serena daughters by 6 different sires that averaged \$24,973. The matings here could be some of her strongest yet!

ASA#3146263

Black

Dbl Polled

Purebred

BD: 3-12-16

CNS Dream On L186

WS Pilgrim H182U

WS Marla 276M

Mr. NLC Upgrade U8676

HF Serena

Miss Knockout 74T

PB SM • EMBRYOS

Offered by Trennepohl Farms & H2O Farm

23: Selling 3 #1 IVF Non-Sorted Embryos by KCC1 Countertime 872H

Pedigree of Sire: ES Right Time FA110-4 x KCC1 Havana 83E

Est Plan Mating EPDs: 10 3.35 80 116 .23 3 20 60 14 8.8

Carcass: 26.35 -.50 .10 -.11 .92 123 76

PB SM • EMBRYOS

Offered by Trennepohl Farms & Phelps Farms

23A: Selling 3 #1 IVF Sexed Heifer Embryos by LLSF Pays To Believe ZU194

Pedigree of Sire: CNS Pays To Dream ZU194 x LLSF Urababydoll U194

Est Plan Mating EPDs: 9 4.0 80 112 .21 4 22 62 11 9.15

Carcass: 25.3 -.47 .12 -.10 .92 115 75

Seller guarantees one (1) 60 day pregnancy per three embryos transferred if implantation is performed by a certified embryologist.

Following in her famous mothers footsteps, Lila has emerged as one of Serena's most predictable daughters. This Pilgrim daughter not only succeeded in the show ring (Res Grand 2017 National Classic and NAILE Jr shows), but she is knocking it out of the park in production. She is responsible for high sellers which include a \$35,000, a \$22,000 and a \$17,000 by Hammer Time and a \$13,750 Bernwick daughter that will be campaigned by Kia Thomsen. We feel that this cow will work great with either of the bulls offered here. We had several and have these matings coming so we are offering some to you for your appraisal. Enjoy!!



STCC Lila's Gift 064J
\$22,000 Daughter at the 2021
Right by Design Sale



KCC1 Countertime 872H
Embryo Sire



LLSF Pays To Believe
Embryo Sire



ASA#2974794
Homo Black
Homo Polled
Purebred
BD: 1-16-15

MCM Top Grade 018X
CLRS Grade-A 875 A
Hook's Excellence 87X
WS Hot Beef X38
WS Anise A71
WS Miss Brandy T28

PB SM • EMBRYOS

Selling 3 #1 IVF Non-Sexed Embryos by W/C Need 4 Speed 1016H

Pedigree of Sire: Rubys Turnpike 771E x K-LER Dolly's Queen 609D
Est Plan Mating EPDs: 12 .7 94 149 .35 6 35 82 15 13.5
Carcass: 52.8 -.34 .47 -.07 1.05 160 99

Seller guarantees one (1) 60 day pregnancy per three embryos transferred if implantation is performed by a certified embryologist.

C4 continues to dominate with her impressive production record and will be looked back on as one of the most influential cows of all time. Year after year she produces sons that launch themselves to the forefront of the breed as AI sires and are used across the nation. Her total dollars generated have never even been tallied, but would be nothing short of impressive. Past selling C4 embryos have gone on to be sale topping lots for their respective owners and the potential ROI you could be looking at with a C4 son or daughter to market should get you more than excited! We mated her to our favorite 2021 W/C bull, Need 4 Speed, appreciating the overall, near flawless, structural package he presents. We have high expectations of the mating and feel it offers much to multiple different facets of the industry!



W/C Need 4 Speed 1016H
Embryo Sire



LCDR Impact 134F
\$13,000 Son



LCDR Favor
Son



KBHR Honor
Son

ASA#3124177
Hetero Black
Homo Polled
3/4 SM 3/16 AN
1/16 CS
BD: 1-10-16

Heads Up 20X ET
LLSF Uprising Z925
LLSF Untouchable U925
SVF/NJC Built Right N48
RP/MP Right To Love 015U
PCC Queens Valentine R9

PB SM • EMBRYOS

Selling 3 #1 Conventional Embryos by Mr. CCF 20-20

Pedigree of Sire: Mr. CCF Vision x HTP SVF Dew The Stroke
Est Plan Mating EPDs: 10 3.05 94 140 .29 4 13 60 8 13.3
Carcass: 33.9 -.58 .18 -.13 1.10 122 87

Seller guarantees one (1) 60 day pregnancy per three embryos transferred if implantation is performed by a certified embryologist.

Where to start on this donor? She has just started her career and is already knocking it out of the park! Her first natural calf was Vantage Point who was the high selling bull in Denver for \$25,000. We have sold 10 calves out of her and they have averaged over \$10,000 each. This fall we just sold a red SAM daughter to Shoal Creek Land & Cattle Co for \$31,500. Semen can no longer be purchased on 20-20 and we thought he would work well with this donor. We haven't had any calves out of this mating yet but they should be phenomenal! This may be the last opportunity to purchase these eggs as the calves are selling so well.



LLSF Rite 2 Luv J98
\$31,500 Something About Mary Daughter



LLSF Frosted Luv H026
Executive Order Daughter



LLSF Rite 2 Luv H741
Executive Order Daughter



LLSF Vantage Point
\$25,000 Son



Mr CCF 20-20
Embryo Sire



ASA#3267226
Homo Black
Homo Polled
3/4 SM 1/4 AN
BD: 1-3-17

LLSF Uprising Z925
HILB Oracle C033R
SS Babys Breath P035
DCC New Look 101
PRS Look Of H25 W264
JM BF H25

PB SM • EMBRYOS

26: Selling 3 #1 IVF Heifer Embryos by JSUL Something About Mary 8421

Pedigree of Sire: W/C Relentless 32C x JBSF Proud Mary
Est Plan Mating EPDs: 12 3.45 79 113 .22 5 20 59 12 11.4
Carcass: 32.25 -.39 .09 -.09 .82 120 75

PB SM • EMBRYOS

26A: Selling 3 #1 IVF Heifer Embryos by LLW Card True North G71

Pedigree of Sire: GSC GCCO Dew North 102C x
Cox's Joy Princess 711E
Est Plan Mating EPDs: 12 2.25 79 111 .20 5 22 61 13 10.4
Carcass: 25.75 -.44 .05 -.09 .85 121 75

Seller guarantees one (1) 60 day pregnancy per three embryos transferred if implantation is performed by a certified embryologist.

True North is the recently selected 2021 Canadian National Champion Simmental Bull that is impressing breeders throughout North America. Canadian Exportable. Lookin Sharp was one of the top picks of many breeders at the Badger Creek Dispersal. Sired by HILB Oracle, she will leave a big impact on this breed with her quality. Jump on for a great ride. It's going to be fun with these two matings.



HILB Oracle 033R
Sire



JSUL Something About Mary
Embryo Sire



LLW Card True North G71
Embryo Sire

ASA#2860142

Homo Black

Homo Polled

Purebred

BD: 10-5-13

SVF Steel Force S701

Mr. HOC Broker

JM BF H25

HSF Better Than Ever

PRS Summer W364

WHF Summer S240

PBSM • EMBRYOS

Selling 3 #1 Conventional Embryos by CLRWTR Clear Advantage H4G

Pedigree of Sire: LLSF Advantage Point F398 x WS Miss Sugar C4
Est Plan Mating EPDs: 13 2.05 94 137 .27 7 32 79 14 7.95
Carcass: 31.9 -.37 .21 -.08 .80 140 90

Seller guarantees one (1) 60 day pregnancy per three embryos transferred if implantation is performed by a certified embryologist.

Our footnotes on Andie seem to be getting a bit repetitive, and lengthier every year. This year is no exception. She is writing her own page in the Simmental history books. Earlier this spring at Bulls and Belles of the Bluegrass, WHF sells and exclusive heifer that has been in the top 5 in both Eastern Regionals and Sweepstakes, and just recently was reserve division at the NAILE Jr. Show. Two females sold in the 2021 Clear Choice Female sale, one topping the sale at 15,000 and the other was 4th high seller at 9,500. Once again all three of these females were by 3 different sires. If you follow the breed at all then you most certainly heard of WHF Summer and her accomplishments, Supreme Female Iowa State Fair, Supreme Female American Royal, and Champion Heifer at NAILE open show. Summer is not just a pretty face she is a prolific donor for the Steenboeks' and WHF producing numerous champions and high sellers. Andie also produced 1st and 3rd overall PTP show heifers of the year in for the 2019/ 2020 show season. And the list does go on. You will be hard pressed to find a cow that has done more on a consistent basis in the last 5 years. It is with great excitement we have mated her to Clear Advantage. You will search long and hard to find bull this complete that also puts it together on paper so well. Ranking in the top 5% or higher on 10 traits of his EPD profile. Bull or heifer we feel this is a can't miss mating and are very exciting for the future of our breed.



WHF Summer 365C
Daughter



CLRWTR Clear Advantage
Embryo Sire



LLSF Vantage Point F398
Embryo Grand sire



ASA#3307345
Red
DbI Polled
Purebred
BD: 3-27-17

Remington Lock N Load 54U
W/C Loaded Up 1119Y
Aubreys Black Blaze III
HTP/SVF Duracell T52
HPF Sazerac Z074
CLRWTR Sazerac W94B

PB SM • EMBRYOS

28: Selling 3 #1 IVF Non-Sexed Embryos by JSUL Something About Mary 8421

Pedigree of Sire: W/C Relentless 32C x JBSF Proud Mary
Est Plan Mating EPDs: 12 2.05 74 105 .20 6 20 56 11 10.0
Carcass: 29.05 -.44 .09 .93 119 73

PB SM • EMBRYOS

28A: Selling 3 #1 IVF Sexed Heifer Embryos by WHF/JS/CCS Double Up G365

Pedigree of Sire: W/C Double Down 5014E x WHF Summer 365C
Est Plan Mating EPDs: 14 .0 71 96 .16 8 21 57 13 10.35
Carcass: 17.6 -.49 -.01 -.09 .95 121 72

Seller guarantees one (1) 60 day pregnancy per three embryos transferred if implantation is performed by a certified embryologist. Embryos are stored at Custom Genetic Solutions, Mitchell, SD.

Queen Electra is a beast of a lady with gorgeous cherry red hair. She's choke fronted, big footed, huge butted, awesome on her feet and legs and yet still combines it all together in such an elegant package. Her

first calf by Executive Order sold as a high selling bred in the 2020 Jewels sale being selected by the Small family, MN for \$10,000. Her dam, HPF Sazerac Z074, is a national champion and many time winner herself and headlined the donor programs for Eggersman and Bonnell. It doesn't matter what you're raising, this girl has been admired by all that have seen her from purebred breeders to clubby guys! These will be some of the first embryos to sell out of Electra and in all honesty, I'd jump on them when you can. We're pretty excited about what the future has in store for her and expect some pretty big things! Whether you go for the possibility of reds and choose the mating to the heterozygous black SAM, or the sexed heifer mating to Double Up, we can't wait to get either one of these matings on the ground!



JSUL Something About Mary
Embryo Sire



WHF/JS/CCS Double Up
Embryo Sire



HS/HLFL Ginger Snap G04E
\$10,000 Daughter

ASA#3300829

Red

Homo Polled

Purebred

BD: 1-9-17

Profit

WS Pilgrim H182U

WAGR Panarama 204Z

DSR Commissioner R827

Bailey's Ms. Dreamy 946W

SRF Miss Dakota 49K

PB SM • EMBRYOS

29: Selling 4 #1 IVF Heifer Embryos by JSUL Something About Mary 8421

Pedigree of Sire: W/C Relentless 32C x JBSF Proud Mary

Est Plan Mating EPDs: 8 4.15 77 109 .20 3 21 59 10 3.75

Carcass: 26.7 -.40 .15 -.08 .83 112 74

PB SM • EMBRYOS

29A: Selling 4 #1 IVF Heifer Embryos by LLW Card True North G71

Pedigree of Sire: GSC GCCO Dew North 102C x

Cox's Joy Princess 711E

Est Plan Mating EPDs: 8 2.95 77 106 .19 3 23 61 11 2.75

Carcass: 20.2 -.46 .11 -.09 .86 114 74

Seller guarantees two (2) 60 day pregnancy per four embryos transferred if implantation is performed by a certified embryologist.

Buck Cherry was the \$40,000 sale feature of the Rust Mountain Sale. She is a full sister to Bailey's Profits Dream, who was Grand Champion Purebred Female at the 2018 AJSA Classic for Sara Sullivan. Quality runs deep in this cow family and these two matings will be just what the doctor ordered. Red or black, they are flat good.



Bailey's Ms Dreamy 946W
Full Sister



JSUL Something About Mary
Embryo Sire



LLW Card True North G71
Embryo Sire



JSUL Some Dream 1315J
Full Sister in Blood to Lot 29



ASA#2642574

Black

Homo Polled

Purebred

BD: 1-6-12

CNS Dream On L186

HTP/SVF Duracell T52

HTP SVF Honeydew

SVF Steel Force S701

JM Steel My Heart

JM BF H25

PB SM • EMBRYOS

30: Selling 3 #1 IVF Reverse Sort Heifer Embryos by So Remedy 7F

Pedigree of Sire: HPF/Hill Uprising C104 x B&K Cream Soda 8D
Est Plan Mating EPDs: 13 .75 72 108 .23 7 20 56 8 14.0
Carcass: 28.9 -.41 -.13 -.08 .88 106 69

PB SM • EMBRYOS

30A: Selling 3 #1 IVF Reverse Sort Heifer Embryos by W/C Bet On Red 481H

Pedigree of Sire: W/C Fort Knox 609F x W/C Angel 7113E
Est Plan Mating EPDs: 13 .35 72 103 .20 6 20 56 10 11.95
Carcass: 31.25 -.39 .06 -.06 1.01 118 74

1/2 SM • EMBRYOS

30B: Selling 3 #1 IVF Reverse Sort Heifer Embryos by Silveiras Style 9303

Pedigree of Sire: Gambles Hot Rod x Silveiras Elba 2520
Est Plan Mating EPDs: 13 .15 61 92 .20 6 14 44 11 8.75
Carcass: 18.55 -.10 .19 -.01 .36 112 65

Sweet Emotion keeps pumping top quality breeding pieces. We had sold so many we started retaining some females, we are now flushing with results soon. Speaking of results, a pen of Denver Bull Champions, SFI Brigade and Savage, who have been used extensively by top breeders. SFI Seeing purple selling for a \$90,000 Valuation, a \$14,000 and \$12,000 open selling at the Rare Vintage Sale, WRS Falling For You sold for \$20,000. A bred recently sold for \$12,000 to the Sandeen family... the list is deep. She had a tough time with reverse sorting for females but like fine wine, she is getting better with age!

SELLING CHOICE OF 2 LOTS FROM 3 OFFERED.



W/C Bet On Red 481H
Embryo Sire



So Remedy 7F
Embryo Sire



Silveiras Style 9303
Embryo Sire



SFI Brigade
Son

ASA#2745060
Hetero Black
Homo Polled
Purebred
BD: 1-2-13

TNT Top Gun R244
JF Milestone 999W
Ms. Maxie Lou M112S
JF Shock And Awe 6207S
Silverstone LPC Miss Awe
Silverstone Chyna Marie

PB SM • EMBRYOS

31: Selling 3 #1 IVF Reverse Sort Heifer Embryos by JSUL Something About Mary 8421

Pedigree of Sire: W/C Relentless 32C x JBSF Proud Mary
Est Plan Mating EPDs: 9 2.55 78 113 .22 4 21 60 12 11.05
Carcass: 29.3 -.42 .07 -.09 .85 117 75

PB SM • EMBRYOS

31A: Selling 3 #1 IVF Reverse Sort Heifer Embryos by So Remedy 7F

Pedigree of Sire: HPF/Hill Uprising C104 x B&K Cream Soda 8D
Est Plan Mating EPDs: 10 1.7 80 121 .26 5 24 63 12 14.9
Carcass: 31.0 -.45 -.05 -.10 .86 115 75

PB SM • EMBRYOS

31B: Selling 3 #1 IVF Reverse Sort Heifer Embryos by W/C Bet On Red 481H

Pedigree of Sire: W/C Fort Knox 609F x W/C Angel 7113E
Est Plan Mating EPDs: 10 1.3 80 117 .23 5 23 63 13 12.85
Carcass: 33.35 -.43 .15 -.08 .99 128 80

Seller guarantees one (1) 60 day pregnancy per three embryos transferred if
implantation is performed by a certified embryologist.

Gemstone's progeny excel every year and her consistency is quite amazing. Recently a Relentless x Gemstone took top honors at the Minnesota Beef Expo. This year a 20/20 sold for \$15,000 for half at our production sale The Rare Vintage. Dnyer and Mike Cox bought 3 embryos and got 3 heifers 2 recently sold in the Foundation Female Sale for \$14,000 and \$10,000. A 20/20 sold for \$19,000 at Hillbrands and went on to win Minnesota State Fair and many other awards. A couple Primo daughters won Grand Champion at the Nebraska State Fair, Reserve Champion AJSA North Regional and Champion TJSSA State futurity. An open Executive Order sold to Linda Canaster for \$15,000...I could go on but a short list of many successes...



W/C Bet On Red 481H
Embryo Sire



So Remedy 7F
Embryo Sire



JSUL Something About Mary
Embryo Sire



\$14,000 Daughter



\$10,000 Daughter



HS Finders Keepers
\$19,000 Daughter



ASA#3625474
Black
Dbl Polled
Purebred
BD: 4-1-19

HILB Oracle C033R
HILB/SHER Data Breach
SHER Glitter Time 012X
Mr. HOC Broker
HILB Crazy N Love A475S
SS Babys Breath P035

PB SM • EMBRYOS

Selling 3 #1 IVF Sexed Heifer Embryos by JSUL Something About Mary 8421

Pedigree of Sire: W/C Relentless 32C x JBSF Proud Mary
Est Plan Mating EPDs: 12 2.1 74 103 .19 5 21 58 10 12.0
Carcass: 20.95 -.45 .05 -.10 .79 114 73

Seller guarantees one (1) 60 day pregnancy per three embryos transferred if implantation is performed by a certified embryologist.

An incredible opportunity to buy into some of the first ever genetics offered on Unbreakable Love! This mating to the most popular bull in the breed, S.A.M, is one we feel like is going to be a home run for making those elite show heifers that have become so desirable. Much like her mother, Crazy N Love, this up and coming donor is as complete and good built as you can make. Along with that, she's super elegant through her front 1/3 and incredible on her feet and legs. You're going to see a lot from this cow over the next few years in our program. Take advantage of an incredible opportunity on some new, fresh genetics backed by an elite, powerful cow family!



HILB Crazy N Love A475S
Dam



HILB/SHER Data Breach
Sire



JSUL Something About Mary
Embryo Sire

ASA#2870496

Black

Dbl Polled

Purebred

BD: 1-4-14

Foundation 724N

K-LER Make It Rain

HCC/CSC Beyonce

SVF/NJC Built Right N48

RBS Zahara

RBS U Drive Me Wild

1/2 SM • EMBRYOS

33: Selling 3 #1 IVF Sexed Heifer Embryos by S&R Stability J824

Pedigree of Sire: Silveiras Style 9303 x S&R Candy Ann J802

Est Plan Mating EPDs: 7 3.15 83 133 .32 4 21 63 14 9.05

Carcass: 59.25 -.12 .21 -.03 .75 116 75

1/2 SM • EMBRYOS

33A: Selling 3 #1 IVF Sexed Heifer Embryos by PVF Blacklist 7077

Pedigree of Sire: PVF Insight 0129 x PVF Blackbird 3070

Est Plan Mating EPDs: 7 3.9 86 132 .29 3 21 64 14 9.95

Carcass: 55.95 -.13 .10 -.03 .82 108 73

Seller guarantees one (1) 60 day pregnancy per three embryos transferred if implantation is performed by a certified embryologist.

It's hard to sell genetics when they have been proven multiple times but we are determined to offer the best we can! I strongly believe in Blown Away's ability to make highly marketable and sought after cattle. Her size and power is matched by few in the Simmental breed. This cow was born to make half-bloods! Her first E.T. calf crop by Colburn Primo bailed the highly competitive female campaigned by the Lehman family, being named Calf Champion at the prestigious Iowa State Fair, Supreme Female at the following 2019 Iowa Beef Expo and rounding out the trifecta back at the Iowa State Fair as the Champion Percentage Female in the Open Simmental Show. The highlight of this past years' progeny was a S&R Stability daughter campaigned by Sara Sullivan selected as the Calf Champion at the inaugural Cattlemen's Congress in OKC.



S&R Stability J824
Embryo Sire



PVF Blacklist 7077
Embryo Sire



RBS Blown Away H012
Daughter, Full Sib to Lot 33



ASA#2900516
Red
Homo Polled
Purebred
BD: 6-7-14

Remington Lock N Load 54U
W/C Loaded Up 1119Y
Aubreys Black Blaze III
Hooks/KS Sequoia 35S
KS Miss Sequoia Y770
ASR Ms. Super Baldy U851

PB SM • EMBRYOS

34: Selling 3 #1 IVF Non Sorted Embryos by KCC1 Countertime 872H

Pedigree of Sire: ES Right Time FA110-4 x KCC1 Havana 83E
Est Plan Mating EPDs: 10 .9 71 107 .23 6 22 57 17 9.6
Carcass: 31.35 -.47 .15 -.10 .95 133 75

PB SM • EMBRYOS

34A: Selling 3 #1 IVF Heifer Embryos by W/C Bet On Red 481H

Pedigree of Sire: W/C Fort Knox 609F x W/C Angel 7113E
Est Plan Mating EPDs: 12 .4 70 101 .20 7 24 59 15 11.0
Carcass: 32.75 -.46 .20 -.08 1.08 134 77

Seller guarantees one (1) 60 day pregnancy per three embryos transferred if implantation is performed by a certified embryologist. Embryos are stored at Trans Ova.

Many Simmy enthusiast are looking for red baldies these days and we think this mating might just produce that with a strong possibility of also making the next industry leading donor cow. You will likely be interested in this mating as it combines the most talked about red Simmental cow in the industry with one of the most highly admired bulls to surface in the past years. To say we are excited to have some Countertime calves hit the ground this spring is a huge understatement!



KCC1 Countertime 872H
Embryo Sire



W/C Bet On Red 481H
Embryo Sire

ASA#3483222

Red

Dbl Polled

Purebred

BD: 1-14-18

Remington On Target 2S

Remington Lock N Load 54U

Bar15 Miss Knight 78E-51G

SS/PRS High Voltage 244X

Sandeen Donna 4838

Sandeen Donna 8386

PB SM • EMBRYOS

35: Selling 3 #1 IVF Sexed Heifer Embryos by Profit

Pedigree of Sire: WS Pilgrim H182U x WAGR Panarama 204Z

Est Plan Mating EPDs: 8 3.1 76 111 .22 4 18 56 11 4.05

Carcass: 15.1 -.43 .04 -.09 .74 110 72

PB SM • EMBRYOS

35A: Selling 3 #1 IVF Sexed Heifer Embryos by W/C Cyclone 385H

Pedigree of Sire: W/C Bankroll 811D x W/C Angel 8598F

Est Plan Mating EPDs: 12 .45 74 111 .24 6 21 59 13 11.5

Carcass: 27.5 -.42 .17 -.08 .95 131 78

Seller guarantees one (1) 60 day pregnancy per three embryos transferred if implantation is performed by a certified embryologist.

Fiona is the newest red donor to hit our operation. Her grandam, Sandeen Donna 8386, is one of the foundation SimAngus donors out of the iconic Coleman Donna 386 X Meyer 734 flush. Sired by the timeless Remington Lock N Load, Fiona has the brightest of futures. Beautiful red hair with all of the right phenotypical components. Sound on the move, ultra-feminine extended front, and a broody rib-cage, packaged in an elegant look. Her donor dam's sire, High Voltage, also adds the influence of the H25, L24, Miley Cottontail lineage. Tonight you have your choice of the first two ET matings from Fiona. Both lots are sexed female IVF embryos. The mating to the \$400,000 Profit, proclaimed Pilgrim's greatest son, offers a chance of red or black offspring that will certainly have power and a show-ring presence. Want red? The mating to the new Bankroll son, W/C Cyclone, offers unparalleled eye appeal, with power... and a chance for the next great red baldy female. Take your choice, or both... the resulting offspring should be showstoppers.



Sandeen Donna 8386
Grandam



Profit
Embryo Sire



W/C Cyclone 385H
Embryo Sire



*Focus
Kyla Copeland*

ASA#2435038

Black

Dbl Polled

Purebred

BD: 4-1-08

SS Goldmine L42

SS On Star RJ13

SVF Breath Taker J130

HC Power Drive 88H

LLSF Paprika P401

JBS Indigo M400

PB SM • EMBRYOS

36: Selling 3 #1 Conventional Embryos by JSUL Something About Mary 8421

Pedigree of Sire: W/C Relentless 32C x JBSF Proud Mary

Est Plan Mating EPD: 10 2.95 73 99 .17 4 26 62 12 10.0

Carcass: 27.2 -.45 -.03 -.09 .90 110 69

PB SM • EMBRYOS

36A: Selling 3 #1 Conventional Embryos by JBSF Berwick 41F

Pedigree of Sire: Rocking P Legendary C918 x JBSF 402B

Est Plan Mating EPD: 8 4.1 74 106 .20 4 25 61 13 9.3

Carcass: 28.15 -.43 -.06 -.09 .86 105 67

Seller guarantees one (1) 60 day pregnancy per three embryos transferred if implantation is performed by a certified embryologist.

Everybody in Simmental breed has heard of Cayenne. She has created quite a legacy and many progressive breeders have added her genetics to their programs across the country. She is listed as one of the most prolific donors in the breed and part of this is due to the longevity & fertility that is built into this cow family. We have had some of these calves from this mating and are very impressed with them. They are soft made, big middled and very pleasing to the eye. The homework has been done for you on this one guys.



LLSF Ella F792
Daughter



LLSF Amethyst A401
Daughter



JSUL Something About Mary
Embryo Sire



JBSF Berwick 41F
Embryo Sire

ASA#3306205
Black
Db1 Polled
Purebred
BD: 3-19-17

WS A Step Up X27
RGRS SRG Two Step 20Z ET
WLTR Lydia 39U ET
SS On Star RJ13
LLSF Cayenne UP401
LLSF Paprika P401

PB SM • EMBRYOS

Selling 3 #1 Conventional Embryos by HPF/Hill Uprising C104

Pedigree of Sire: LLSF Uprising Z925 x RP/MP Right To Love 015U
Est Plan Mating EPD: 11 2.25 72 101 .19 6 25 61 9 11.8
Carcass: 29.45 -.43 .04 -.11 .76 109 71

Seller guarantees one (1) 60 day pregnancy per three embryos transferred if implantation is performed by a certified embryologist.

This upcoming donor is a Cayenne daughter out of Two Step. You will be hard put to find a cow with this kind of power, rib shape, muscle and internal dimension and still maintain an extremely feminine look. Everyone that has seen her says she is a beast! We are offering an opportunity to get in on the ground level for these genetics. We will be having several of this mating this Spring. We think the sire of SO Remedy will work extremely well on this cow and are very excited for the Spring calf crop to arrive.



HPF/Hill Uprising C104
Embryo Sire



LLSF Cayenne UP401
Dam



ASA#3729699
Hetero Black
Homo Polled
Purebred
BD: 3-20-19

WBF Significant B132
Rubys Turnpike 771E
Rubys Miss Cleo 240Z
Remington Lock N Load 54U
W/C Miss Werning 6346D
Miss Werning 534R

PB SM • EMBRYOS

**38: Selling 3 #1 IVF Reverse Sort Heifer Embryos
by KCC1 Countertime 872H**

Pedigree of Sire: ES Right Time FA110-4 x KCC1 Havana 83E
Est Plan Mating EPDs: 9 2.6 87 136 .31 3 24 68 15 9.85
Carcass: 41.55 -.47 .00 -.11 1.05 126 80

PB SM • EMBRYOS

**38A: Selling 3 #1 IVF Reverse Sort Heifer Embryos
by JSUL Something About Mary 8421**

Pedigree of Sire: W/C Relentless 32C x JBSF Proud Mary
Est Plan Mating EPDs: 10 3.35 84 127 .27 3 24 66 12 9.45
Carcass: 38.9 -.45 -.03 -.09 1.04 115 76

PB SM • EMBRYOS

**38B: Selling 3 #1 IVF Reverse Sort Heifer Embryos
by So Remedy 7F**

Pedigree of Sire: HPF/Hill Uprising C104 x B&K Cream Soda 8D
Est Plan Mating EPDs: 11 2.5 86 135 .31 4 27 70 12 13.3
Carcass: 40.6 -.48 -.14 -.11 1.05 114 76

Seller guarantees one (1) 60 day pregnancy per three embryos transferred if implantation is performed by a certified embryologist.

Second high selling purebred Simmental at the Werning sale. We choose her for her foot size, internal dimension, length of spine and long, smooth front end. It did not hurt she goes back to W/C Miss Werning 534R. She weaned off an excellent Bar CK heifer with excellent udder design and more than adequate milk. She flushed like a champ right out of the gate. Get in on the ground floor with 990G while you can.



KCC1 Countertime 872H
Embryo Sire



JSUL Something About Mary
Embryo Sire



So Remedy 7F
Embryo Sire



W/C Miss Werning 534R
Grandam

ASA#2435596

Black

Db1 Polled

Purebred

BD: 9-15-07

CNS Dream On L186

JS Burning Up 33R

Triple C Burning Power L3

KenCo/MF Powerline 204L

JS Shes So Fine 14P

Drake Makin Memories

PB SM • EMBRYOS

39: Selling 3 #1 IVF Reverse Sort Heifer Embryos by W/C Relentless 32C

Pedigree of Sire: Yardley Utah Y361 x Miss Werning KP 8543U

Est Plan Mating EPDs: 9 3.55 71 100 .19 4 25 60 11 6.7

Carcass: 19.5 -.50 .09 -.08 1.04 112 70

PB SM • EMBRYOS

39A: Selling 3 #1 IVF Reverse Sort Heifer Embryos by W/C Relentless 32C

Pedigree of Sire: Yardley Utah Y361 x Miss Werning KP 8543U

Est Plan Mating EPDs: 9 3.55 71 100 .19 4 25 60 11 6.7

Carcass: 19.5 -.50 .09 -.08 1.04 112 70

PB SM • EMBRYOS

39B: Selling 3 #1 IVF Reverse Sort Heifer Embryos by HILB/SHER Data Breach

Pedigree of Sire: HILB Oracle C033R x SHER Glitter Time 012X

Est Plan Mating EPDs: 12 1.85 74 113 .24 7 29 66 12 11.45

Carcass: 26.35 -.56 -.03 -.12 1.04 117 73

Seller guarantees one (1) 60 day pregnancy per three embryos transferred if implantation is performed by a certified embryologist.

The legendary Flirty needs no introduction to the Simmental breed. She has been the back bone to many sires, donors and show champions. Now deceased, this will be the last time Flirty embryos will be for sale at public auction. Buy genetics from a legendary cow that has done a great job in the Simmental breed.



W/C Relentless 32C
Embryo Sire



HILB/SHER Data Breach
Embryo Sire



JS Black Silk "Boots"
Grandam & Triple Crown
Winner, Granddaughter

ASA#3264116
Hetero Black
Homo Polled
3/4 SM 1/4 AN
BD: 9-5-16

Mr. NLC Upgrade U8676
TJ Main Event 503B
TJ Miss New Day U14
JF Milestone 999W
WHF Angels Envy 245A
WHF Sierra 245S

PB SM • EMBRYOS

Selling 3 #1 IVF Sexed Heifer Embryos by WHF/JS/CCS Double Up G365

Pedigree of Sire: W/C Double Down 5014E x WHF Summer 365C
Est Plan Mating EPDs: 14 -.65 75 103 .18 7 22 60 16 10.9
Carcass: 19.2 -.49 .02 -.09 .97 132 76

Seller guarantees one (1) 60 day pregnancy per three embryos transferred if implantation is performed by a certified embryologist.

Delilah is a household name at WHF. Most cows here get called by their tattoo, not Delilah. She doesn't get to leave the front pasture very often. Over the past few years she is making her way to top of our donor pen. Not only is she perfection to look at but she produces bulls and females with the best of them. She is just getting started. Our high selling beifer this year selling 1/2 interest for \$17,000 going to the Walther family in Indiana. A daughter sold to the Eggersman family at the 2021 NAILE sale for \$12,500. The second high selling bull in the Belles/Bulls of the Bluegrass was WHF POINT PROVEN H45 1/2 interest going to Trennepohl Farms in Indiana. Most recently we partnered with Boyert Show Cattle in Iowa on WHF ENTOURAGE H450. Both of these bull will see heavy use in our herd. This mating to DOUBLE UP was a no brainer. He hit the show seen last January at the Cattlemans Congress claiming Reserve Champion. He made lots of friends on Display. Followed up by his appearance at the NAILE again he was a fan favorite. His progeny at our place look great. We believe in cow family's and the ability to cross Delilah and Summer is exciting. Now is the time to get in on elite genetics out of Delilah and Double Up.



WHF/JS/CCS Double Up G365
Embryo Sire



WHF Delilah 450J
\$12,500 Daughter that sold at
the NAILE



WHF Angels Envy 245A
Dam

ASA#2860134
Red
Homo Polled
Purebred
BD: 9-5-13

TNT Top Gun R244
JF Milestone 999W
Ms. Maxie Lou M112S
CNS Dream On L186
WHF Sierra 245S
WHF Black Jasmine 240J

PBSM • EMBRYOS

Selling 3 #1 IVF Reverse Sort Heifer Embryos by W/C Bet On Red 481H

Pedigree of Sire: W/C Fort Knox 609F x W/C Angel 7113E
Est Plan Mating EPD: 12 1.3 78 110 .20 7 20 58 15 12.35
Carcass: 23.25 -.45 .17 -.08 .93 134 79

Seller guarantees one (1) 60 day pregnancy per three embryos transferred if implantation is performed by a certified embryologist.

This will be Angels Envy's first introduction into the bright lights of the National Western Stock Show. She has been our lead red donor since her mother Sierra. She has made an impact on our herd. She has several daughters in production and they are all big footed, soft structured, attractive fronted and beautiful uddered. Her most notable daughter you will also see in this sale. WHF DELILAH 45D she is carrying on the family legacy well. She is a full sister to Alley one of the most legendary Red cows of modern times. She has been multiple time high seller in dispersals. Most recently \$31,000 for her at 10 years of age. When we saw Bet On Red before he sold so we knew this was a mating that would be made in the future. Angels Envy will add a little more frame to Bet on Red. While he can put a little more look into her. This could be the perfect match.



W/C Bet On Red 481H
Embryo Sire



WHF Delilah 45D
Daughter

ASA#2529932
Hetero Black
Homo Polled
Purebred
BD: 1-26-09

TJ 57J The Gambler
Dikemans Sure Bet
Megan 9M
Mr. Beef E141
TJ 12L
TJ Black 51C

PB SM • EMBRYOS

42: Selling 3 #1 Conventional Embryos by W/C Fort Knox 609F

Pedigree of Sire: W/C Bankroll 811D x K-LER Dolly's Queen 609D
Est Plan Mating EPDs: 16 -.6 76 116 .25 8 39 77 18 12.65
Carcass: 33.0 -.33 .37 -.05 .92 160 88

PB SM • EMBRYOS

42A: Selling 3 #1 Conventional Embryos by KBHR Honor H060

Pedigree of Sire: Hook's Beacon 56B x WS Miss Sugar C4
Est Plan Mating EPDs: 18 -1.8 82 127 .29 11 41 82 22 12.8
Carcass: 46.2 -.30 .48 -.05 1.06 182 96

Seller guarantees one (1) 60 day pregnancy per three embryos transferred if implantation is performed by a certified embryologist.

Our first Fort Knox x 38W progeny will be sale features in our upcoming production sale in February. They've complimented each other so well that we went back and flushed her the same way to make more! 38W is now an aged donor, yet continues to gain notoriety with every passing calf crop. 38W sons and daughters are highly sought after. Her outcross, yet proven pedigree, impressive EPD profile and production record is only a testament to her useful contribution to the breed!

A mating of great magnitude!!! Honor, in our opinion, has been the most impressive Beacon son to date and was the C4 high seller of the 2021 sale season! Crossing him on the calving ease and femininity of 38W presents an EPD profile within the top rankings of the breed! Imagine your next baldy herd sire or donor prospect resulting from these embryos!



W/C Fort Knox 609F
Embryo Sire



KBHR Honor H060
Embryo Sire



LCDR Ms Joni 77J
Fort Knox Daughter



TJ Teardrop
TJ Main Event Son



LCDR 227J
Fort Knox Son



LCDR 246J
Fort Knox Son

ASA#2709142
Homo Black
Homo Polled
3/4 SM 1/4 AN
BD: 10-15-12

G A R Predestined
GW Predestined 701T
GW Miss Lucky Strike 363
GW Lucky Man 644N
HHS Miss 861U
HHS Miss 851S

PB SM • EMBRYOS

Selling 3 #1 Conventional Embryos by LCDR Impact 134F

Pedigree of Sire: CDI Mainline 265D x WS Miss Sugar C4
Est Plan Mating EPDs: 9 2.7 107 172 .41 5 29 82 15 13.45
Carcass: 60.65 -.29 .42 -.07 1.05 156 102

Seller guarantees one (1) 60 day pregnancy per three embryos transferred if implantation is performed by a certified embryologist.

This stylish, powerhouse black baldy donor is relatively new to our program, yet had proven herself long before she came to North Dakota. Her sire, 701T, has left a legacy with his ultra productive, perfect addered daughters scattered across the country, and when evaluating her in person she possesses all that 701T did so well. 836Z's son, "867B" has quietly made a name for himself and we are excited to offer a stellar set of sons and daughters in our upcoming production sale by him. If you haven't heard of 867B, you may want to do some research! Taking 836Z to Impact is a definite power to power mating with impressive EPD projections, added length, and more then likely a baldy!



LCDR Impact 134F
Embryo Sire



LCDR Ms Janae 57J
Daughter by Cash Flow



LCDR 212J
Son by 867B



373E as a calf



KCC1 Countertime
Embryo Sire



Profit
Embryo Sire

ASA#3261841
Homo Black
Homo Polled
Purebred
BD: 3-17-17

CCR Cowboy Cut 5048Z
CCR Anchor 9071B
CCR Ms. Barb 2120Z
Mr. HOC Broker
WAGR Chanel 5073C
3C Melody M668 BZ

PBSM • EMBRYOS

44: Selling 3 #1 Conventional Embryos by KCC1 Countertime 872H

Pedigree of Sire: ES Right Time FA110-4 x KCC1 Havana 83E
Est Plan Mating EPDs: 10 1.25 78 117 .25 4 22 61 14 9.3
Carcass: 32.35 -.38 .30 -.08 .82 137 82

PBSM • EMBRYOS

44A: Selling 3 #1 IVF Reverse Sort Heifer Embryos by Profit

Pedigree of Sire: WS Pilgrim H182U x WAGR Panarama 204Z
Est Plan Mating EPDs: 7 3.4 77 110 .21 4 22 60 10 1.65
Carcass: 17.8 -.36 .25 -.08 .64 118 77

Seller guarantees one (1) 60 day pregnancy per three embryos transferred if implantation is performed by a certified embryologist on Lot 44 & no guarantee on Lot 44A.

• **ESTELLE** is a family favorite with her awesome disposition. She is the first natural calf of WAGR Chanel 5073C, the senior donor at Shipwreck Cattle, and the "poster cow" for ASA's website. CCR Anchor has definitely proved his worth in the breeding pen, siring multiple sons across the country that have continued his legacy of calving ease and look while leaving daughters in multiple programs nation wide that productive, attractive, and fundamentally correct. We feel that 373E is no different in general, but we do find her added bone, foot size, and sheer skeletal width the add on features to the sire group. Her cattle are proving to be heavier constructed, bolder bodied, with added muscle, and will not stray from skeletal integrity with the added power.

• **PROFIT** has left his mark on the business over the years, influencing multiple programs throughout the nation, generating high sellers and show champions more often than not. If you visit the CK and Wager programs one will see multiple daughters that have carried the program producing those high demand show beifers, investment level bulls and commercial berdsires alike. We felt like this mating combined the necessary compliments needed to make that sought after kind. I strongly believe that Profit will add the physical freak factor to this cow with his trademark neck extension and head quality without sacrificing shape. Estelle should keep the mating grounded in fundamentals with her impeccable running gear, soft body design, and sensible size. Profit semen that reverse sorts well is a valuable commodity and very hard to acquire. We have chosen to offer 3 reverse sort IVF heifer embryos with no guarantee on pregnancy as we will assume all the same risks when we transfer these into cows this spring with no guarantees as well. This is the only time this mating will be offered to the public.

• **KCC1 COUNTERTIME 872H** would be the 2021 Kearns Cattle Co high selling bull sired by Right Time and from the sophomore class of the KCC1 Havana 83E progeny. A year ago, a full sister was introduced to the public in Oklahoma City. KCC1 SWC Harmony was reserve calf champion both days for Megan Brown, and she continued those winning ways for the remainder of the spring at the Texas Majors. Harmony brought attention to her flush mate brother that would have been the lead bull in the 2021 National Western Pen show for Kearns Cattle Co. Countertime semen will not be offered to the public until January of 2023 and the last offering of semen on his sire will be in January of 2022. 872H will impress you in person with his size, length, impeccable hoof quality with a deep dense heel, stout and flat in his bone work, textbook in hind leg set and carriage, deep tying and stout in his quarter, big pinned, level spined with width of top, big and open in his upper rib and is more chiseled about his head and neck than his sire. I would protect this bull where Estelle is so good, in regard to depth and lower sweep to her rib cage.

ASA#2579174
Black
Dbl Polled
Purebred
BD: 10-5-10

CNS Dream On L186
SVF Steel Force S701
SVF Sheza Beauty L901
G&L Blackfoot 716D
JM BF H25
YC Miss BIK B80

PB SM • EMBRYOS

45: Selling 3 #1 IVF Embryos by W/C Relentless 32C

Pedigree of Sire: Yardley Utah Y361 x Miss Werning KP 8543U
Est Plan Mating EPDs: 10 3.4 75 103 .18 4 19 57 9 7.05
Carcass: 17.2 -.41 .01 -.07 .81 104 70

PB SM • EMBRYOS

45A: Selling 3 #1 IVF Embryos by W/C Bankroll 811D

Pedigree of Sire: W/C Loaded Up 1119Y x Miss Werning KP 8543U
Est Plan Mating EPDs: 12 2.4 77 110 .21 6 24 63 10 7.85
Carcass: 27.4 -.47 -.05 -.09 1.02 108 72

Seller guarantees one (1) 60 day pregnancy per three embryos transferred if implantation is performed by a certified embryologist.

X50 has been a tried and true donor thru the years in this operation. Last spring, Al Bruhn and family, along with Buehler Show Cattle, had enough confidence in her past production to add her to their respectable donor lineups as our partners. Her daughters have been very well received on our production sales, with her most recent, Hopeful H17, being the \$11,000 high selling open for us in 2021. On paper, you will notice that she is a full sister to the great show sire, Mr. HOC Broker, being a Steel Force out of the great H25. Phenotype-wise, she is a big hipped, power cow that exudes performance... a "load", if you will. Despite the overall power, she still remains feminine and eye appealing. We've sent two matings to the bright lights for your appraisal. Both of these are IVF embryos, with conventional semen. We feel both could be homeruns. Take your choice of either of the proven W/C bulls...the great baldy Bankroll, or the show heifer-extraordinaire producer, W/C Relentless.



W/C Relentless 32C
Embryo Sire



W/C Bankroll 811D
Embryo Sire



Mr HOC Broker
Full Brother



ASA#3045387
Black
Polled
Purebred
BD: 2-12-15

SVF Steel Force S701
Mr. HOC Broker
JM BF H25
Sandeens SOS
GF/HS Miley X243
SS Sweet Dreams P31

PB SM • EMBRYOS

**Selling 3 #1 IVF Non-Sorted Embryos by
KCC1 Countertime 872H**

Pedigree of Sire: ES Right Time FA110-4 x KCC1 Havana 83E
Est Plan Mating EPDs: 7 3.65 77 115 .24 2 19 57 14 6.1
Carcass: 35.75 -.43 .00 -.11 .82 111 70

Seller guarantees one (1) 60 day pregnancy per three embryos transferred if implantation is performed by a certified embryologist.

Miley 5034C "Bear" is a real beast and off to a great start! Her first calf sold for \$40,000 and the bar has risen ever since. In the recent Right by Design sale, she was responsible for four direct daughters that averaged \$16,625 with a top of \$50,000 to Moore Land and Cattle. This cow can produce and we feel the mating to the Kerns top seller will be just the ticket on her... bull or heifer! Put these in, calve them out then give us a call!



STCC PFK Miley 45J
\$50,000 Daughter at the
2021 Right By Design Sale



KCC1 Countertime 872H
Embryo Sire

ASA#3127717

Homo Black

Dbl Polled

Purebred

BD: 3-20-16

WS A Step Up X27

RGRS SRG Two Step 20Z ET

WLTR Lydia 39U ET

HTP/SVF Duracell T52

HPF Right To Love Z338

RP/MP Right To Love 015U

PB SM • EMBRYOS

Selling 3 #1 IVF Sexed Heifer Embryos by W/C Fort Knox 609F

Pedigree of Sire: W/C Bankroll 811D x K-LER Dolly's Queen 609D

Est Plan Mating EPDs: 11 2.15 84 121 .23 7 26 68 12 10.6

Carcass: 37.9 -.32 .31 -.06 .94 134 85

Seller guarantees one (1) 60 day pregnancy per three embryos transferred if implantation is performed by a certified embryologist.

Here is an exciting opportunity to own genetics from one of our best producing donors, Two Love 112D. She was a top seller in the 2017 National Western sale and was part of a string of flush mates that produced \$150,000 for Be&K Farms. Her dam is a full sib to HPF Quantum Leap and Lover Boy, both past Denver Champion Bulls. And by the Famous RGRS SRG Two Step-now deceased. This cow is pretty fronted, BIG bodied, athletic and has really clicked on several different matings. We think this combination will be top notch and heifer embryos to boot!



W/C Fort Knox 609C
Embryo Sire



GC JRL Visions Of Love 112J
Daughter by Perfect Vision



ASA#3302386
Black
Db1 Polled
Purebred
BD: 2-6-17

LLSF Uprising Z925
HILB Oracle C033R
SS Babys Breath P035
3C Macho M450 BZ
AJE Gabby R7
CMB Glamourama J7

PB SM • EMBRYOS

**Selling 3 #2 IVF Sexed Heifer Embryos by
GSC GCCO Dew North 102C**

Pedigree of Sire: HTP/SVF Duracell T52 x Welsh's Scarlet 161Z
Est Plan Mating EPDs: 11 2.0 83 112 .19 6 23 64 11 12.3
Carcass: 27.05 -.46 .05 -.10 .87 118 78

Seller guarantees one (1) 60 day pregnancy per three embryos transferred if implantation is performed by a certified embryologist.

Eleanor was our selection from the 2018 Jewels of the Northland Sale and has made her way to the top tier of our donors. This Oracle X Gabby daughter has been producing some super pretty necked, big bellied calves. Her first natural calf sold in the 2021 Passion to Perfection for \$7000 and a couple daughters by Pay the Price and Executive Order sold in the 2021 Illini Elite for \$4500 and \$4000. There are some pretty exciting Fort Knox babies running around as well. As you can see Eleanor is a very versatile Donor and works well with several different matings. She is a sleek fronted, huge bodied, purebred female and this mating to Dew North will be stellar!



HILB/JLR Miss Nora G905E
\$7,000 Daughter



GSC GCC Dew North 102C
Embryo Sire



JLR Pricilla 906H
\$4,500 Daughter

ASA#3010076
Homo Black
Dbf Polled
Purebred
BD: 2-8-15

CNS Pays To Dream T759
LLSF Pays To Believe ZU194
LLSF Urababydoll U194
Mr. NLC Upgrade U8676
HF Serena
Miss Knockout 74T

PB SM • EMBRYOS

49: Selling 3 #1 IVF Heifer Embryos by So Remedy 7F

Pedigree of Sire: HPF/Hill Uprising C104 x B&K Cream Soda 8D
Est Plan Mating EPDs: 10 3.15 85 130 .29 5 24 67 11 13.9
Carcass: 31.35 -.48 .01 -.11 .95 115 78

PB SM • EMBRYOS

49A: Selling 3 #1 IVF Heifer Embryos by W/C Relentless 32C

Pedigree of Sire: Yardley Utah Y361 x Miss Werning KP 8543U
Est Plan Mating EPDs: 8 4.35 83 118 .22 2 20 62 10 9.7
Carcass: 21.75 -.48 .18 -.09 .94 116 78

Seller guarantees one (1) 60 day pregnancy per three embryos transferred if implantation is performed by a certified embryologist.

CLRWTR Serena C74L "Breez" is just hitting her stride as one of the great Simmental donors in the breed. Her dam, HF Serena, has produced countless high sellers for many different programs across the country but we believe we have her best daughter here at the ranch in Gordon. After seeing the quality of her embryo calves, we knew we had to own this donor. She has a long resume in the show ring winning multiple shows for Jon Jordan and Clearwater Simmentals, and claiming 3rd Overall at 2016 Simmental Junior Nationals. These matings offered here will without a doubt produce some high sellers next year. What an opportunity this is to tap into some of the best genetics in the breed today!



So Remedy 7F
Embryo Sire



W/C Relentless 32C
Embryo Sire



HF Serena
Dam



ASA#3239142
Red
Homo Polled
Purebred
BD: 3-15-17

Remington Lock N Load 54U
Kappes Pendleton B6
Miss Werning KP 8543U
ACS Everready 970W
SVS Red Sara 407B
3D Miss Sara 158U

PB SM • EMBRYOS

**50: Selling 3 #1 Conventional Embryos by
CDI Trustee 387F**

Pedigree of Sire: CDI Revival 370D x CDI Miss Hometown 163C
Est Plan Mating EPDs: 9 2.75 86 134 .30 4 25 68 17 9.9
Carcass: 47.15 -.55 .09 -.11 1.32 133 81

3/4 SM • EMBRYOS

**50A: Selling 3 #1 Conventional Embryos by
GW Major Move 590E**

Pedigree of Sire: GW Movin On 183C x GW Miss Predestined 147Y
Est Plan Mating EPDs: 9 1.4 82 126 .28 5 30 71 21 14.2
Carcass: 39.9 -.41 .13 -.07 1.11 143 81

Seller guarantees one (1) 60 day pregnancy per three embryos transferred if implantation is performed by a certified embryologist.

Red Sara was one of the top selling females in the SK Dispersal along with her bull calf, SK Rip H26, selling for \$16,000. Sara is sired by Kappes Pendleton and her dam sired by ACS Every Ready 970W bull, who would be an outcross to many red breeders. These two mating come with an excellent genetic profile and predictability. You like them red and profitable, here they are Red on Red good! CDI Trustee Embryos are full siblings to SK Rip, \$16,000 son.



CDI Trustee 387F
Embryo Sire



GW Major Move 590E
Embryo Sire



SK Rip H26
\$16,000 Son

ASA#2837100
Black
Homo Polled
Purebred
BD: 9-7-13

TNT Top Gun R244
JF Milestone 999W
Ms. Maxie Lou M112S
Wheatland Bull 468P
HPF Caliente U335
GCF Miss Caliente

PB SM • EMBRYOS

51: Selling 3 #1 IVF Reverse Sort Heifer Embryos by JSUL Something About Mary 8421

Pedigree of Sire: W/C Relentless 32C x JBSF Proud Mary
Est Plan Mating EPDs: 9 4.75 78 111 .21 3 22 60 13 7.1
Carcass: 28.15 -.43 .01 -.09 .90 111 70

PB SM • EMBRYOS

51A: Selling 3 #1 IVF Reverse Sort Heifer Embryos by W/C Bankroll 811D

Pedigree of Sire: W/C Loaded Up 1119Y x Miss Werning KP 8543U
Est Plan Mating EPDs: 10 4.1 79 114 .22 5 25 65 13 7.55
Carcass: 30.45 -.51 .02 -.10 1.11 115 73

Seller guarantees one (1) 60 day pregnancy per three embryos transferred if implantation is performed by a certified embryologist.

Orange is the power cow in our donor lineup. She is past high seller at HPF. This red donor is stout and always adds muscle, base width, and performance. On the pedigree side Orange Crush is backed by Maxie Lou, Milestone, Wheatland 468P, HPF Caliente 335. U335 is a half sister to the 2 time North American champion Onyx. This donor is already on the predictable list and her offspring is known for performance. Her bulls have done well in our annual bull sale and the females are awesome cows for our program and our customers as well. All the matings will provide a benefit and add genetic merit plus pounds. Performance is what the Simmental breed was built on, so continue to add the power.



JSUL Something About Mary
Embryo Sire



W/C Bankroll 811D
Embryo Sire



HLTS Crushed Order G916
Son



HLTS Executive Order G922
Son



ASA#2437282
Black
Dbl Polled
Purebred
BD: 2-13-08

Nichols Legacy G151
CNS Dream On L186
CNS Sheeza Dream K107W
PCC Night Moves H10
HHHF Black Glitter
HHHF Black Matilda

PB SM • EMBRYOS

52: Selling 4 #1 IVF Heifer Embryos by JSUL Something About Mary 8421

Pedigree of Sire: W/C Relentless 32C x JBSF Proud Mary
Est Plan Mating EPDs: 10 3.35 78 110 .20 4 22 61 10 8.1
Carcass: 26.6 -.45 .10 -.10 .86 114 75

PB SM • EMBRYOS

52A: Selling 3 #1 IVF Heifer Embryos by Gateway Follow Me F163

Pedigree of Sire: C&C McKinley 3000 Exar x Dunk-W Maxine HR 505C
Est Plan Mating EPDs: 6 2.65 76 111 .23 5 17 55 9 8.25
Carcass: 19.65 -.27 .29 -.04 .62 107 73
Seller guarantees two (2) 60 day pregnancy per three embryos transferred if implantation is performed by a certified embryologist.

There are very few if any cows that have had the longevity of outstanding production as HS Stop and Stare. When it comes to the production of percentage Simmental cattle, Stop And Stare is without question one of the best ever. Her offspring continue to win year after year. Since 2012 she has produced six champions in the calf division at Louisville. She has also produced Champion Females at Kansas City and Denver. The list of outstanding progeny from Stop And Stare is long and impressive. Her daughters always sort themselves to top whenever they are sold. She has produced heifers commanding \$45,000, \$30,000 1/2 interest, \$30,000, \$28,000, \$25,500, \$25,000, \$25,000, \$22,000 and \$19,000 to name a few. These two fresh matings of S.A.M and Follow Me will be even more exciting. This legendary Dream On daughter just flat gets it done.



JSUL Something About Mary
Embryo Sire



Gateway Follow Me
Embryo Sire



HILB Katrina 6703B
\$25,500 Blacklist Daughter



HILB Stare & Believe
\$60,000 Maternal Sister

ASA#2885732

Black

Dbl Polled

1/2 SM 1/2 AN

BD: 5-2-14

O C C Legend 616L

B C Lookout 7024

Gibbet Hill Mignonne E37

CNS Dream On L186

HS Stop And Stare U118L

HHSF Black Glitter

3/4 SM • EMBRYOS

53: Selling 3 #1 Conventional Embryos by THSF Lover Boy B33

Pedigree of Sire: HTP/SVF Duracell T52 x RP/MP Right To Love 015U

Est Plan Mating EPDs: 12 .2 76 108 .20 5 23 61 14 13.5

Carcass: 23.55 -.31 .33 -.05 .76 131 78

3/4 SM • EMBRYOS

53A: Selling 3 #1 Conventional Embryos by SC Pay The Price C11

Pedigree of Sire: CNS Pays To Dream T759 x LLSF Urababydoll U194

Est Plan Mating EPDs: 9 1.95 74 105 .20 4 20 57 12 10.85

Carcass: 32.15 -.35 .19 -.07 .84 110 71

Seller guarantees one (1) 60 day pregnancy per three embryos transferred if implantation is performed by a certified embryologist.

One of the greatest Lookout daughters of the Stop And Stare cow. No matter what you breed Caught Lookin to, it flat out works. If you like good looking cattle with style and numbers, don't pass this opportunity up. These are money making matings.

SC Pay The Price C11
Embryo Sire



THSF Lover Boy
Embryo Sire



ASA#2717362
Homo Black
Homo Polled
Purebred
BD: 9-6-12

CNS Dream On L186
HTP/SVF Duracell T52
HTP SVF Honeydew
SVF/NJC Built Right N46
RP/MP Right To Love 015U
PCC Queens Valentine R9

PB SM • EMBRYOS

54: Selling 3 #1 IVF Non Sorted Embryos by W/C Bank On It 273H

Pedigree of Sire: W/C Bankroll 811D x KS Miss Sequoia Y770
Est Plan Mating EPDs: 9 3.9 89 123 .22 5 26 70 14 11.55
Carcass: 35.35 -.44 .13 -.08 1.05 125 81

PB SM • EMBRYOS

54A: Selling 3 #1 Reverse Sort Heifer Embryos by SS Fort Hayes H618

Pedigree of Sire: W/C Fort Knox 609F x STF Miss ZW87
Est Plan Mating EPDs: 10 2.85 82 116 .21 4 25 66 13 10.8
Carcass: 26.95 -.41 .20 -.08 .87 128 80

Seller guarantees one (1) 60 day pregnancy per three embryos transferred if implantation is performed by a certified embryologist.

Pick up any catalog and even this one you should find the Right To Love 015U. Z338 is a full sib to Quantum Leap, Lover Boy and many more in herds across in America. Her dam 015U was many time champion

herself and time continued down the path of producing the best to walk on the tanbark and being behind the back drop. Winning is great however in South Dakota she come a bull producer as well. A daughter as the high selling bred heifer in the Dakota Ladies sale. Right To Love Z338 speaks for herself being the right type and kind. Many donors seem to show up in catalogs each year however that shows the goods never go away. We offer new two exciting mating of W/C Bank On It and SS Fort Hayes. Both new and fresh mating offer the best genetics to add the proven Right to Love. Bank On It was the high seller at Werning's and Fort Hayes was the high seller. Dollars usually mean they are well liked by many and we expect the elite results for the buyer.



RP/MP Right To Love 015U
Dam



W/C Bank On It 273H
Embryo Sire



SS Fort Hayes H618
Embryo Sire

ASA#2983385

Black

Dbl Polled

Purebred

BD: 1-5-15

Yardley Impressive T371

Yardley High Regard W242

Miss Yardley T68

Triple C El Poderoso Rey

LLSF Neon Rey

JBS Neon N1001

PB SM • EMBRYOS

Selling 3 #1 IVF Heifer Embryos by KCC1 Countertime 872H

Pedigree of Sire: ES Right Time FA110-4 x KCC1 Havana 83E

Est Plan Mating EPDs: 9 1.15 74 117 .27 3 23 60 14 13.55

Carcass: 32.25 -.39 .12 -.08 .89 126 76

Seller guarantees one (1) 60 day pregnancy per three embryos transferred if implantation is performed by a certified embryologist.

Opportunities like this are far and few between as we are offering very little of this genetic outside of our own herds. C505 was the \$38,000.00 high selling lot during the 2019 The One Sale in Denver. Ferguson Cattle will be presenting (3) C505 x Fort Knox heifers during the OKC pen show that are worth a look! Embryos are stored at Boviteq (Madison, WI).



Pearls Pies

KCC1 Countertime
Embryo Sire



LLSF Neon Rey
Dam





ASA#3102092
Homo Black
Homo Polled
Purebred
BD: 9-22-15

WS Beef King W107
WS All-Around Z35
CDI Ms. High Roller 39W
MCM Top Grade 018X
RC Miss Top Grade 833A
Pella B02P

PB SM • EMBRYOS

56: Selling 3 #1 IVF Sexed Heifer Embryos by DMCC Counter Attack 8C

Pedigree of Sire: Remington Secret Weapon 185 x CARD Forever 61A
Est Plan Mating EPDs: 14 -1.2 72 104 .20 8 22 58 15 9.3
Carcass: 26.95 -.32 .27 -.08 .64 143 81

PB SM • EMBRYOS

56A: Selling 3 #1 IVF Sexed Heifer Embryos by Rockin P Private Stock H010

Pedigree of Sire: WLE Copacetic E02 x RP/MP Built To Love A021
Est Plan Mating EPDs: 14 -1.3 76 111 .22 8 23 61 18 8.25
Carcass: 27.25 -.38 .32 -.09 .68 155 85

Seller guarantees one (1) 60 day pregnancy per three embryos transferred if implantation is performed by a certified embryologist.

485C stems from the same cow family that produced KLER/RC Hoya Saxa (Madonna) who sold for \$24,500 in our online sale to Derek Richie and Zach Gray along with her dam RC Miss Kansa sold for \$60,000 for 2/3rds to Jones Show Cattle. This cow line is one that is the complete package offering looks with phenomenal EPDs and you throw in DMCC Counter Attack these females are sure to be awesome. The 485C bull calves are standouts in Manhattan at River Creek Farms. With the multiple high selling, national champion females in the Kansa cowline these ones could be the best. 3 Embryos sexed semen IVF.

**DMCC Counter
Attack 8C
Embryo Sire**



**Rockin P
Private Stock H010
Embryo Sire**



ASA#2990628
Hetero Black
Homo Polled
3/4 SM 3/16 AN
1/16 CS
BD: 2-3-15

Heads Up 20X ET
LLSF Uprising Z925
LLSF Untouchable U925
SVF/NJC Built Right N48
RP/MP Too Much Fun 09Z
HPRP Ms. Burgess 009W

PB SM • EMBRYOS

57: Selling 3 #1 IVF Reverse Sort Heifer Embryos by JSUL Something About Mary 8421

Pedigree of Sire: W/C Relentless 32C x JBSF Proud Mary
Est Plan Mating EPDs: 9 3.25 79 115 .23 3 16 56 10.65 12.05
Carcass: 28.75 -.41 .15 -.09 .80 117 76

PB SM • EMBRYOS

57A: Selling 3 #1 IVF Reverse Sort Heifer Embryos by So Remedy 7F

Pedigree of Sire: HPF/Hill Uprising C104 x B&K Cream Soda 8D
Est Plan Mating EPDs: 10 2.4 81 122 .27 4 19 59 11 15.9
Carcass: 30.45 -.44 .04 -.11 .81 116 76

Seller guarantees one (1) 60 day pregnancy per three embryos transferred if implantation is performed by a certified embryologist.

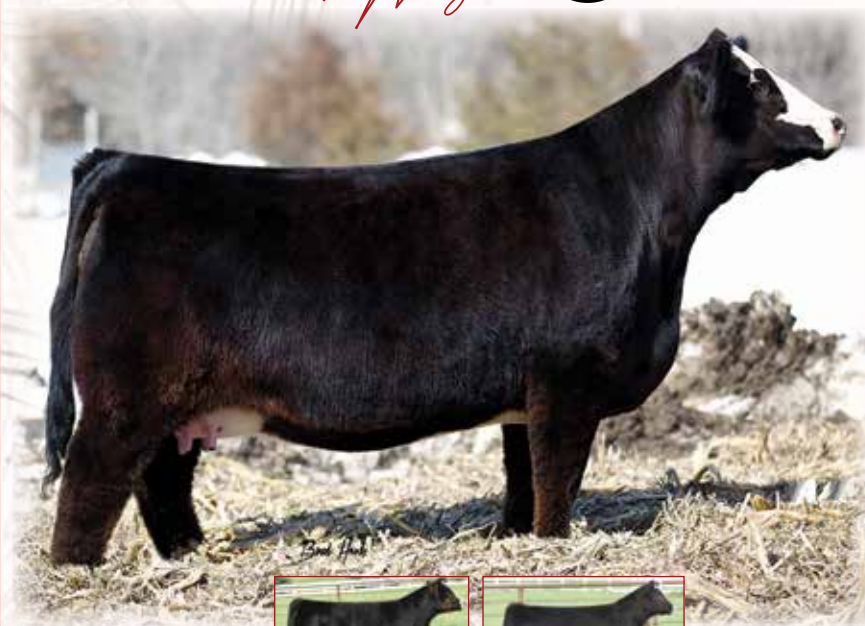
No matter what type of the operation or Simmental genetics as breeders we all are searching to advance or improve the bottom. We have many choices as breeders and we feel here is an opportunity. The choices for anyone to consider are the industry leaders. Remedy, Something About Mary, Bankroll and Right Time. To include is the dam the top donor Cora, an Uprising x RP Too Much Fun x Burgess Cora continues to have excellent progeny at Clearwater and HTP. The Remedy progeny are hitting now and nice are the comments. The Something About Mary progeny seems to be in the top end for all. The desire is make genetic progress and the outcome will do that so make choice in Denver. Buy all six and that will be a wise investment.



JSUL Something About Mary
Embryo Sire



So Remedy 7F
Embryo Sire



ASA#2592843

Black

Dbl Polled

Purebred

BD: 4-10-11

CNS Dream On L186

SVF Steel Force S701

SVF Sheza Beauty L901

SS On Star RJ13

LLSF Cayenne UP401

LLSF Paprika P401

PB SM • EMBRYOS

58: Selling 3 #1 IVF Reverse Sort Heifer Embryos by JSUL Something About Mary 8421

Pedigree of Sire: W/C Relentless 32C x JBSF Proud Mary

Est Plan Mating EPDs: 11 2.3 69 96 .17 3 21 55 8 6.7

Carcass: 19.15 -.47 -.03 -.09 .88 103 67

PB SM • EMBRYOS

58A: Selling 3 #1 IVF Reverse Sort Heifer Embryos by W/C Fort Knox 609F

Pedigree of Sire: W/C Bankroll 811D x K-LER Dolly's Queen 609D

Est Plan Mating EPDs: 12 .9 71 103 .20 5 26 62 9 7.9

Carcass: 19.3 -.46 .17 -.07 .99 121 76

Seller guarantees one (1) 60 day pregnancy per three embryos transferred if implantation is performed by a certified embryologist.

It isn't very often that a name perfectly describes a cow but in this case, the name hits the nail on the head. Eye Candy is an absolute powerhouse of a purebred Simmental female. She is square uddered, sleek necked and excellent on the move. This female stems from one of the best and most convenient cow families in the breed. Her donor dam, Cayenne goes back to a Goldmine son and a Power Drive daughter which leads the power and style found in Eye Candy. She has also has generated over \$400,000 and she's not done yet. Her son Addiction is in the Cattle vision as well and he has been doing a great job. Just another testament to her amazing diversity. If you are looking to get in the driver's seat in this amazing breed, there is no better way than with amazing genetics don't miss out on this rare opportunity. These matings are sure to be something special, you absolutely can't go wrong here.



Daughter



Daughter



JSUL Something About Mary
Embryo Sire



W/C Fort Knox 609F
Embryo Sire



LLSF Cayenne
Daughter

ASA#2864713

Black

Dbl Polled

Purebred

BD: 1-9-14

SVF Steel Force S701

Mr. HOC Broker

JM BF H25

STF Dominance T171

STF Onyx 451W

GCF Miss Caliente

PB SM • EMBRYOS

59: Selling 3 #1 IVF Reverse Sort Heifer Embryos by HPF Quantum Leap Z952

Pedigree of Sire: HTP/SVF Duracell T52 x RP/MP Right To Love 015U

Est Plan Mating EPDs: 12 2.45 77 108 .2 5 22 60 10 8.2

Carcass: 28.3 -.45 -.02 -.09 .91 112 73

PB SM • EMBRYOS

59A: Selling 3 #1 IVF Reverse Sort Heifer Embryos by Remington Secret Weapon 185

Pedigree of Sire: GWS Ebonys Trademark 6N x Aubreys Black Blaze II 5T

Est Plan Mating EPDs: 13 2.05 66 92 .17 5 17 50 12 9.55

Carcass: 22.85 -.44 -.12 -.10 .75 108 63

Seller guarantees one (1) 60 day pregnancy per three embryos transferred if implantation is performed by a certified embryologist.

Beyonce is one of the biggest bodied, perfect uddered, powerful and maternal donor cows I have ever seen. She's just a young cow new to being a donor but she amazes us every time, she hits the ball out of the park without a miss. There is no wonder why either all you need to do is look at her pedigree! She is sired by the great Broker who sexed female semen is selling for over \$1,000 right now and her dam is the legendary Onyx who is no doubt one of the best cows to ever hit the red carpet and has left her mark on the breed. Our first daughter out of her is a Quantum Leap that has just earned Grand Champion honors in Ohio that female is going to be an outstanding donor. These Matings can only do great things! The Vantage Point Cattle are proving to do great things and Sexed Quantum Leap semen is selling for \$650 right now so don't miss out on the opportunity.



STF Onyx 451W
Dam



HPF Quantum Leap Z952
Embryo Sire



Remington Secret Weapon 185
Embryo Sire



ASA#3430416
Black
Homo Polled
5/8 SM 3/8 AN
BD: 1-23-18

W/C United 956Y
W/C Executive Order 8543B
Miss Werning KP 8543U
GW Predestined 701T
GW Miss GPRD 028X
GW Miss Prem Beef 545U

3/4 SM • EMBRYOS

**Selling 3 #1 IVF Reverse Sort Heifer Embryos
by VCL Foresight**

Pedigree of Sire: Mr. CCF 20-20 x HCC0 Countess 412D
Est Plan Mating EPDs: 11 2.0 86 133 .29 5 19 62 11 10.0
Carcass: 33.3 -.42 .23 -.08 1.03 120 80

Seller guarantees one (1) 60 day pregnancy per three embryos transferred if implantation is performed by a certified embryologist.

KLER Dolly's Lady is an absolute brute of a female that is even more impressive in person. This young female is only at the beginning stages of her productive life. Two sibs to this mating averaged \$6250 this year. If you're looking to raise cattle with huge breeding potential, you need to own these embryos. The Dolly's Lady calves are amazing fronted, great footed, with substance. Lady herself commanded \$16,000 for half interest in the Fort Worth sale as an open female to King Cattle Company. The sire VCL Foresight himself was a high seller in Hartman's sale a few years ago and now selling semen for close to \$300. Dolly's full sister KLER Dolly's Queen is the dam of the legendary Fort Knox so the proof is in the production here.



KLER Dolly's Queen
Full Sister



VCL Foresight
Embryo Foresight

ASA#3766717
Red
Homo Polled
3/4 SM 1/4 AN
BD: 10-19-19

GW Predestined 701T
Bar CK Tebow 1006X
Bar CK Money Mkr A1231U
CDI Verdict 220Y
WS Miss Northstar B180
WS Tamar Z179

PB SM • EMBRYOS

Selling 3 #1 IVF Non-Sexed Embryos by CDI Secret Agent 407C

Pedigree of Sire: CDI Verdict 220Y x CDI Ms. Beef King 43A
Est Plan Mating EPDs: 21 -4.15 71 106 .22 13 33 69 24 11.5
Carcass: 23.7 -.37 .68 -.07 .80 199 97

Seller guarantees one (1) 60 day pregnancy per three embryos transferred if implantation is performed by a certified embryologist.

The donor, 9226G, is elegant fronted, extra long bodied and feminine with plenty of substance-probably the sweetest red Tebow daughter there is. This mating to Secret Agent should produce calves that are extended and attractive yet still big ribbed, square hipped, and stout boned. And, if you like numbers look these up! The projected mating API ranked these embryos at #2 among all red purebreds in the ASA database (on 12/1/21). We expect easy-to-work-with, good disposition cattle from this mating - just like the donor dam. Tested homozygous polled and non-diluted. (Almost 200 API mating)



CDI Secret Agent 407C
Embryo

W/C Bankroll 811D Semen



ASA#3187005
Hetero Black
Homo Polled
Purebred
BD: 1-30-16
Adj BW: 82
Adj WW: 889

Remington Lock N Load 54U
W/C Loaded Up 1119Y
Aubreys Black Blaze III
WAGR Dream Catcher 03R
Miss Werning KP 8543U
Miss Werning 534R

Selling 9 Units Total Semen

62: 3 Units _____
62A: 3 Units _____
62B: 3 Units _____

CE	BW	WW	YW	ADG	MCE	MM	MWW	STAY
13	1.7	80	112	.20	7	28	67	10

DOC	CW	YG	MARB	BF	REA	API	TI
11.3	32.4	-.53	.13	-.087	1.27	122	80

Semen stored at Trans Ova, Chillicothe, MO

W/C Bankroll semen is in short supply and hard to find. Buy now and make your next great baldy.

MARSHALL & FENNER FARMS • Brian Marshall, Malta Bend, MO • 660-641-4522

TJ Teardrop 783F Semen



ASA#3459734
Homo Black
Homo Polled
3/4 SM 1/4 AN
BD: 1-15-18
Adj BW: 87
Adj WW: 863

Mr NLC Upgrade U8676
TJ Main Event 503B
TJ Miss New Day U14
Dikemans Sure Bet
TJ Ms 38W
TJ 12L

Selling 6 Units Total Semen

63: 2 Units _____
63A: 2 Units _____
63B: 2 Units _____

CE	BW	WW	YW	ADG	MCE	MM	MWW	STAY
15	-1.0	83	126	.27	6	38	80	20

DOC	CW	YG	MARB	BF	REA	API	TI
15.8	39.8	-.26	.01	-.056	.76	133	79

Semen stored at Nichols Cryo Genetics

The TJ Teardrop cattle have been in high demand and semen is not available on the open market.

RUBLE RANCH • Jeremie Ruble, Corydon, IA • 406-581-7940

You Dream It. We Design It.



Mobile Apps



Custom & Responsive Websites



Email Campaigns



Logos & Branding



Business Cards, Flyers & Publication Advertisements



WEB | PRINT | DESIGN

5907 Meredith Dr • Urbandale, Iowa 50322
515-251-4600 • 866-839-3353 • info@edje.com • edje.com



Liberty
Specialty Markets

A member of
Liberty Mutual
Insurance Group

Cattle Mortality Insurance

Covering deaths from accidents, illness, or disease



**Jame Secondino Krieger
and Anna Krieger**

Jame 812-208-0956

Anna 269-470-7553

www.livestockins.com

jame@kriegerfarms.com





W/C Fort Knox



FELT Perseverance



WHF/JS Double Up



W/C Relentless



LLSF Pays To Believe



SC Pay The Price



Ruby NFF Up The Ante



W/C Bankroll



OBBC CMFM Deplorabull



Lover Boy



Meant To Be



ACLL Fortune



Dew North



WLE Black Mamba



KCC1 Exclusive



TL Ledger



W/C Double Down



CLRS Guardian



WLE Copacetic



CDI Innovator



LLSF Vantage Point



Reckoning 711F



Bar CK Red Empire



W/C Bet On Red

ELITE SIMMENTAL GENETICS

the ONE SIM

Saturday | January 15, 2022

6:30 PM MST

DENVER, COLORADO

Magie

Eberspacher
ENTERPRISES INC.

2904 Co Rd 6, Marshall, MN 56258

7 a:

FIRST CLASS! TIME DATED MATERIAL!

FIRST CLASS
MAIL
U.S. POSTAGE
PAID
MN MAIL