



TRIPLE  FARMS
MILLENNIUM XI

Saturday, October 4, 2008

*Sale starts at 12 Noon Sharp!
At the Farm • Emerald, Wisconsin*

Triple C Farms Millennium XI

Join us on Saturday, October 4, 2008 at 12:00 Noon CST
At the Farm • 2609 County Hwy. S • Emerald, Wisconsin

SCHEDULE:

Friday, October 3rd

12:00 NoonSale cattle on display
5:00-8:00 PM . . .Finger Food & Social including music for your entertainment
EVERYONE WELCOME! *Courtesy car available to and from motel starting at 5:00 PM*

Saturday, October 4th

8:30 AMCattle on display (doughnuts and refreshments)
11:00 AMComplimentary Lunch
12:00 Noon**Millennium XI: Sale of the Century**

LOCATION: Interstate 94 to exit 19. Take Hwy. 63 north 12 miles to Co. Rd S. Turn east (right) 4 1/2 miles. Watch for signs.

SALE HEADQUARTERS:

AmericInn 800-634-3444 or 715-684-5888
Baldwin, WI (17 miles south of farm off I-94)
*Ask for Triple C Farms Sale Special Rate
Blocks held until September 16, 2008. Call Today!*

AREA MOTELS:

Super 8 Motel • New Richmond, WI715-246-7829
Super 8 Motel 800-800-8000 or 715-684-2700
Baldwin, WI (17 miles S. of farm, I-94 and Exit 19, Hwy. 63)

AIRPORTS:

Minneapolis/St. Paul International Airport
Served by all major airlines (55 miles from the farm)
Eau Claire, Wisconsin
Served by Northwest Airlines (55 miles from the farm)
New Richmond, Wisconsin
Can accommodate private planes (13 miles from the farm)

TERMS & CONDITIONS: All cattle sell under the terms and conditions of the American Simmental Association. Credit card checks accepted.

LIVESTOCK INSURANCE: Insurance will be available sale day through sale management and Jame Secondino 765-832-2697.

EPDs: EPDs in the catalog are the new Fall 2008 EPDs. Please note that EPDs may change from the time the sale catalog is printed until registration papers are transferred.

ANNOUNCEMENTS: Announcements made sale day and from the auction block during the sale take precedence over printed material associated with this sale. Anyone attending this sale attends at his or her own risk. Breeders or any of the sale force will not be held responsible for any personal injury for attending this sale.

PUBLICATION REPRESENTATIVES:

Steve Sellers, Edje Technologies770-957-6145
Mike Williams, Special Assignment660-584-5210
Tom Rooney, Lee AgriMedia515-491-6025
Kelly Schmidt, ASA Field Representative406-599-2395

SALE CONSULTANTS:

Dalton LundyCell 502-727-6898
Chris SweatCell 479-970-6905
Joe Paul StuartCell 903-278-4718

SPECIAL GUESTS:

Vicky Wilmes-Wilking, President/MN Simmental Association,
LeSeuer, MN
Bill Meyer, President/WI Simmental Association, Argonne, WI

AUCTIONEER: Col. Tracy Harl402-461-3575

PROFESSIONAL SALE MANAGEMENT:

Eberspacher
ENTERPRISES INC.

2904 County Rd. 6, Marshall, MN 56258

VAL & LORI EBERSPACHER
Office 507-532-6694
Cell 612-805-7405
Fax 507-532-9457
E-mail: ebersale@starpoint.net
www.ebersale.com

Live Internet Bidding @ www.edjecast.com

Real time bidding will be available via the Internet for this sale. Live video /audio will allow buyers to bid on animals as if they were present at the auction. Internet buyers must create an account and register to bid 24 hours prior to the sale at www.edjecast.com. Instructions are available on the website or by calling Stephen Linnebur at 303-549-6557 or Jen at the EDJE Cast office, ph. 866-839-3353. No buyer premium added to the purchase price.
A division of EDJE Technologies, Inc.



SALE DAY PHONES: 715-265-7093 • 715-684-9222 • 612-859-7711 • 612-805-7405

Mark your calendars for
BULLENNIUM IX
SATURDAY, MARCH 21, 2009

TRIPLE C FARMS
SIMMENTALS

Owners: Peter and Ila Courtney
1000 Deer Creek Road, Maple Plain, MN 55359
952-472-4243 or 612-813-5240 • 612-813-5205 fax

Manager: Roger Allen
2609 County Road S, Emerald, WI 54013
715-265-7093 Office • 715-265-7084 Home
715-684-9222 Cell • 715-265-7848 Fax
Assistant: Joe Donnelly 651-983-3526
Kansas Manager: Mike Beltz 785-965-2275

Triple C Farms 2008 Scholarship Winners



Stephanie Dausch with Triple C Angel Dust
2007 Maryland State Fair Champion



Katy Tunstall with Triple C Tricksey S12M
2007 Arkansas State Fair Champion
2007 Washington County Fair (AR) Champion



Aaron Zimmerman with Triple C Bitter Sweet
Reserve Grand Champion Simmental Cow-Calf Pair
2008 Wisconsin State Fair Junior Show
Supreme Champion Female 2008 Marathon Co. Fair, WI

JUNIORS!
Win with Triple C genetics
and earn money
for college!

Juniors Having Success with Triple C Genetics...



Dear Junior Simmental Contestants,

I'm proud of the Triple C Farms genetics and the animals we produce. Every calving season our hearts beat fast as we spot those perfectly configured calves – almost immediately we know there is a competitor in our midst.

And those calves won't win a thing unless they are in experienced and caring hands – Juniors who give their all to train the calf for the show ring and prepare themselves to present their animal to the judges – showcasing its greatest attributes.

Couple that with the competitive edge you bring and together we will have produced a winner.

So it is with great pleasure and anticipation that we offer our Junior customers who win with our animals, a scholarship to the school of their choice, assuring them of the education they deserve.

Sincerely, *Peter*



Charlie Martinez with Triple C Lizzie
Champion Percentage Heifer
2008 Texas Junior Simmental Preview Show



Ashley Zimmerman with Triple C Kimmie



Aaron Zimmerman with Triple C Summer

Triple C Farms Believes in Education & You!

To Qualify for the Triple C Scholarship Program

Animals must be purchased from Triple C Farms at public auction or by private treaty. The heifers must be bought and registered by a Junior and be in his/her name.

If the animal that wins in 2008 is the first animal purchased from Triple C Farms by the Junior, the scholarship is listed under 2008 will be paid. If, at the time of the award, the Junior has purchased two or more animals from Triple C Farms, the scholarship listed under Multi-Purchase will be paid.

The scholarship is paid for each of the awards received. If a heifer achieves applicable awards in two or three of the approved shows, the Junior will receive scholarship money for each win. If the heifer repeats the achievement the following year, the scholarship is paid again.

To receive the scholarship earned, the student is required to submit the proper information on a Triple C Farms Scholarship Application Form, provide proof of winning and provide a picture of the winning animal on show day. Scholarships will be applied to the Trust account approximately 10 days after receiving all materials.

Application forms can be requested in writing from the Triple C Scholarship Program, **Dr. Steve Rogers, Scholarship Administrator, 9890 Moss Road, Fall Creek, WI 54742 or by phone 715-832-7867.**

Scholarships will be funded by Triple C Farms and placed in the Triple C Scholarship fund in Trust at Wells Fargo Bank in the name of the recipient. The fund administrator is Dr. Steve Rogers of Triple C Farms. The fund will earn market-rate interest until properly distributed to the accredited two or four-year college, university or vocational-technical school. Wells Fargo Bank will process scholarship awards in August and December. Checks will be made payable jointly to the recipient and the educational institutions and must be endorsed by both.

Qualified expenses include tuition, books, related fees, room and board. Scholarships can only be used by the winning Junior and are nontransferable. Any unused funds will be forfeited on the scholarship holder's 28th birthday.

Scholarships to be awarded	2008	Multi-Purchase
National AJSA Show		
Grand Champion (Purebred Show)	\$10,000	\$12,500
Reserve Grand Champion (Purebred Show)	\$5,000	\$6,250
Four AJSA Regional Shows and the National Western, American Royal, North American, Simmental Breeders Sweepstakes, Percentage AJSA Classic, Houston, San Antonio, Fort Worth		
Grand Champion	\$2,500	\$3,500
Reserve Grand Champion	\$1,250	\$1,750
State Fair Junior		
Grand Champion	\$1,000	\$1,250
Reserve Grand Champion	\$500	\$625
County Fair Junior Show (The county of your residence)		
Grand Champion	\$250	\$250



Val



Peter and Kade own Independence together. "Indy" has won her class twice in Denver and this summer was Grand Champion Cow-Calf Pair at the 2008 AJSA North Central Regional Classic where the judge said she easily overpowered the class – she is simply that powerful. From the side you simply are impressed with her body depth and mass. She is long spined, square hipped and nice fronted with a picture perfect udder. Even more impressive is her rear view with her base, width and muscle expression. From the standpoint of performance and production, Indy is in a league of her own. She calved at 21 months and three months later was flushed and produced 24 #1 eggs. If you need a donor that will simply put you in the driver's seat, whether purebred or percentage, this Power Drive x Joker x Hollywood Queen young cow will do just that. **Independence sells open and ready to start generating revenue.**



KA TCF Independence S30L

Homozygous Black Dbl. Polled PB Female ASA#2357410
Tattoo: S30L BD: 7-4-06 Adj. BW: 85 Adj. WW: 714

WLE POWER STROKE
HC POWER DRIVE 88H
KAPPES LADY IRISH F88
PVF-BF BF26 BLACK JOKER
TRIPLE C KRISSIE L30Y
HART HOLLYWOOD QUEEN E700

EPDs	
CE	4
BW	0.9
WW	25
YW	55
MCE	4
MM	7
MWW	19
STAY	23
CW	-3.2
YG	-.02
Marb	-.02
BF	.01
REA	.10
API	97
TI	54



Independence as a calf in Denver



Independence as a yearling in Denver



Hart Hollywood Queen E700





2 GFI Lacey M21

Black Homozygous Polled PB Female ASA#2184849
 Tattoo: M21 BD: 3-10-02 Adj. BW: 90 ET Adj. WW: 687

ELLINGSON BLACK PERFECTOR
 GFI PERFECTOR K47
 RIV BLK JOSIE 43B 755G
 GFI HF EXPLOSION G023
 GFI BAILEY J018
 G&L BLACK VELVET 715D

EPDs	
CE	1
BW	3.3
WW	42
YW	70
MCE	1
MM	-6
MWW	15
STAY	23
CW	8.9
YG	.00
Marb	-.12
BF	.00
REA	.10
API	88
TI	56

Lacey was our pick of Rick Gramm's herd in 2002. She has added a new dimension to Triple C, and no matter what bull you mate her with both bull and heifer calves are of equal value. Pull up her cow card and her list of high-sellers includes: Major League to D Bar C (Canada), Heavy Hitter to Silver Spur Simmental (AR), Tinkerbelle to Gramm Farms (MN), Angel Dust to Stephanie Dausch (MD), Badger to ETR Simmentals (NE), Perfect Power to Bill Sachs (MO) and Lacies to Kanoy Simmentals (MO). The list goes on and on. Lacey produces cattle that are moderate framed, very soft structured, extremely wide based and, most importantly, capable of flat putting on pounds quickly. Studying Lacey's profile, she is skeletally extended, feminine fronted, full middled, level hiped and possesses a picture perfect udder. She is homozygous polled and heterozygous black. Lacey calved in March, so she sells open and ready for embryo transplant.



Triple C
 Tinkerbelle
 S30H
 Owned by
 Gramm Farms
 MN



Progeny of Lacey



Triple C
 Angel Dust
 S363
 Owned by
 Stephanie
 Dausch, MD



Triple C Badger R864H
 Owned by ETR Simmentals, NE & TCF



Triple C Royal Command P822
 Owned by JP Black Simmentals, AR

Daughters of GFI Lacey and Majic Man

3 Triple C Genesis U023

Black Dbl. Polled PB Female ASA#2439916
Tattoo: U023 BD: 3-9-08 Adj. BW: 94 ET Adj. WW: 709

Genesis and Majestic are full sibs to the litter of Lacey bulls that impressed everyone at our 2008 Bullennium Sale. These two impressive girls are long bodied and feminine fronted with an amazing amount of muscle and base width. They are high performing females that are also attractive to the eye. If you like cattle that are maintenance-free with style, check out these two. Selling choice. Triple C will retain one.

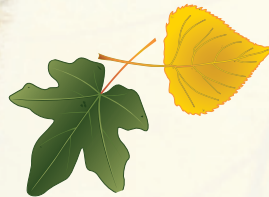


3A Triple C Majestic U014

Black Dbl. Polled PB Female ASA#2439891
Tattoo: U014 BD: 2-6-08 Adj. BW: 68 ET Adj. WW: 683



Triple C
Majic Man M211



Pedigree and EPDs for Lots 3, 3A & 3B

LCHMAN LUCKY BUCK 7049C
TRIPLE C MAJIC MAN M211
FF MS FRAULEIN F166
GFI PERFECTOR K47
GFI LACEY M21
GFI BAILEY J018

EPDs	
CE	2
BW	2.1
WW	41
YW	71
MCE	4
MM	4
MWW	25
STAY	21
CW	7.7
YG	-0.6
Marb	-0.5
BF	.00
REA	.28
API	.92
TI	.61

3B Triple C Glisten U77N

Black Dbl. Polled PB Female ASA#2439902
Tattoo: U77N BD: 1-26-08 Adj. BW: 96 ET Adj. WW: 764

Cowmen pay attention here. Glisten is the co-high weaning weight heifer of our 2008 calf crop. She is simply massive middled, massive muscled and really long. She is super sound structured while being moderate framed and extra easy fleshing which is so important with today's feed costs.



Progeny of Lacey



Triple C Perfect Power R274
Owned by Sachs Simmental, MO



Triple C Major League T235
Owned by D Bar C, Canada
Full sib to Lots 3, 3A & 3B



Triple C Heavy Hitter T195
Owned by Silver Spur Simmental, AR
Full sib to Lots 3, 3A & 3B



Val



Triple C Miss Liberty P1
2006 Reserve National Champion Female

4 NJC Libby L33

Homozygous Black Homozygous Polled PB Female
ASA#2151486 Tattoo: L33 BD: 9-24-01
Adj. BW: 81 Adj. WW: 672

HARTS BLACK CASINO B408
PVF-BF BF26 BLACK JOKER
PVF-BF MABELLE C131
NICHOLS BLK DESTINY D12
NJC/TJF JOURNEY
NJC EBONY ANTOINETTE

EPDs	
CE	5
BW	0.9
WW	34
YW	65
MCE	-1
MM	17
MWW	34
STAY	27
CW	2.8
YG	.00
Marb	-.28
BF	.02
REA	.19
API	94
TI	54

It is with second thoughts that we offer Libby in this year's Millennium Sale. We always wanted the Antoinette cow family; and when we found Libby, she was the one. In her first calf crop, she produced Liberty, our Reserve National Champion, along with Radiant Angel and Guardian Angel, who are now donors for Ultricks (OH) and the Jass family (IA). There was also Sweet Treat, a high-selling open in a previous Millennium Sale going to the Joe Dobbins family (NC). Additionally, Libby produced our high seller in Denver this year who sold to C-Mor Beef (IL).



Triple C Radiant Angel

Her other progeny include numerous bulls, selling mainly in Arkansas where Chris Sweat said one time that one bull has bred nearly every cow in Arkansas. Only because of her ability to produce large flushes and the daughter Triple C is retaining as a bred heifer (Triple C Personality), can we afford to let her go. Libby calved in March this year, so she sells open and ready to flush. Selling full interest and full possession.

The famous Ebony Antoinette cow family



Justice

5 Triple C Justice T1924

Black Dbl. Polled PB Female ASA#2386211
Tattoo: T1924 BD: 2-19-07 Adj. BW: 73 Adj. WW: 751

SRS J914 PREFERRED BEEF
TRIPLE C INVASION R47K
HOOKS KARRIE 47K
HC POWER DRIVE 88H
TRIPLE C MISS LIBERTY P1
NJC LIBBY

A.I. Sire: Triple C L. Taylor
A.I. Date: 6-15-08
Est. Plan Mating EPDs:
11 -1.5 29 58 2 11 26 22
CW -4.8 YG -.10 Marb .22
BF .03 REA .43
API 123 TI 68

EPDs	
CE	8
BW	-0.4
WW	33
YW	66
MCE	3
MM	12
MWW	28
STAY	21
CW	1.3
YG	-.07
Marb	.09
BF	.02
REA	.42
API	109
TI	65

Justice is what Triple C is all about. Moderate framed, easy fleshing, wide based, balanced genetic values all combined into an attractive, mobile package that is productive and will generate revenue. As you can tell, she's one of my favorites. She settled first A.I. service to Taylor, our full brother to Singletary that topped our Bullennium Sale going to Clearview Farms (IL). Justice's natural mother is Liberty, our Reserve National Champion Heifer a few years ago. This is the first progeny we've offered out of Liberty, and, trust me, there will be many more.

Daughters of Triple C Go Girl

I ran some numbers quickly off of Go Girl's cow card. She has had 62 calves that have grossed \$288,400 for an average of \$4,651 per calf. In this group, the three all time high-seller heifers at Triple C are daughters and numerous high-selling bulls are hers. That's impressive. Girl Power is a full sister to two of the highest selling heifers, along with the Reserve Grand Champion Bull in Denver 2008, Power Dozer. She is what it's all about. She is soft made, correct in her muscle shape and design, straight and clean in her lines combining this with a faultless structure that makes her one of the most complete, well balanced heifers to sell anywhere. Rich Girl on the other hand amazes us with her extension of skeleton and body length. She is extra cool fronted, really thick and square down her top and rump. With her agility and "show me" attitude, she impresses everyone who sees her. These girls will work anywhere in any scenario. **Selling choice on Lots 6 & 6A, and Triple C will keep one.**



Triple C
Go Girl K346

Lifetime Earnings to Date
\$288,400!

6 Triple C Girl Power U57

Black Dbl. Polled PB Female ASA#2439892
Tattoo: U57 BD: 2-3-08 Adj. BW: 80 ET Adj. WW: 709

WLE POWER STROKE
HC POWER DRIVE 88H
KAPPES LADY IRISH F88
LCHMAN LUCKY BUCK 7049C
TRIPLE C GO GIRL K34G
TRIPLE C REWARDS QUEEN H

SELLING CHOICE!
Lots 6 & 6A

EPDs	
CE	8
BW	0.5
WW	32
YW	65
MCE	5
MM	7
MWW	23
STAY	23
CW	2.1
YG	-.08
Marb	.17
BF	.01
REA	.39
API	117
TI	65



Triple C Power Dozer
Res. Grand Champion Bull '08 NWSS
Full brother to Lots 6 & 9

6A Triple C Rich Girl U866

Black Dbl. Polled PB Female ASA#2439890
Tattoo: U866 BD: 2-7-08 Adj. BW: 77 ET Adj. WW: 661

NICHOLS BLK DESTINY D12
WHEATLAND BULL 131L
WHEATLAND LADY 908J
LCHMAN LUCKY BUCK 7049C
TRIPLE C GO GIRL K34G
TRIPLE C REWARDS QUEEN H

EPDs	
CE	8
BW	0.4
WW	44
YW	71
MCE	2
MM	2
MWW	24
STAY	23
CW	5.0
YG	-.01
Marb	.11
BF	.00
REA	.13
API	114
TI	70

Four powerful
Go Girl daughters!



Lot 6



Lot 6A

7 Triple C Glory Girl U3063

Black Dbl. Polled PB Female ASA#2439876
Tattoo: U3063 BD: 1-27-08 Adj. BW: 89 ET Adj. WW: 781

SRS J914 PREFERRED BEEF
TRIPLE C INVASION R47K
HOOKS KARRIE 47K
LCHMAN LUCKY BUCK 7049C
TRIPLE C GO GIRL K34G
TRIPLE C REWARDS QUEEN H

Glory Girl fits the mold of all the Go Girls. She is soft middled, easy fleshing and sound structured with plenty of performance. Glory Girl is a full sister to Pashion, who was last years high-selling heifer going to Jimmie Dickerson (AR). Check out these genetic values - they are as balanced as you can make one.

EPDs	
CE	10
BW	0.9
WW	35
YW	64
MCE	3
MM	9
MWW	26
STAY	20
CW	1.6
YG	-.07
Marb	.28
BF	.02
REA	.40
API	118
TI	69



Lot 7

8 Triple C Lucky Girl U5044

Black Dbl. Polled PB Female ASA#2439893
Tattoo: U5044 BD: 2-3-08 Adj. BW: 69 ET Adj. WW: 612

HC POWER DRIVE 88H
TRIPLE C EL PODEROSO REY
JSF FIESTA
LCHMAN LUCKY BUCK 7049C
TRIPLE C GO GIRL K34G
TRIPLE C REWARDS QUEEN H

Lucky Girl possesses highest and most balanced genetic values in the offering. This Raymond daughter is the definition of easy keeping, moderate and soft in her design with freedom of movement. She combines all this into a power packed meat wagon package. She may have some extra chrome for some, but take her home, feed her and watch her grow. She will make a profitable cow for anyone.

EPDs	
CE	11
BW	-0.6
WW	42
YW	76
MCE	4
MM	5
MWW	26
STAY	22
CW	6.6
YG	-.01
Marb	.25
BF	.03
REA	.35
API	128
TI	75



Lot 8

Daughters of Triple C Go Girl



9 Triple C Girl Talk T611P

Homozygous Black Dbl. Polled PB Female ASA#2386237
Tattoo: T611P BD: 1-7-07 Adj. BW: 75 ET Adj. WW: 609

WLE POWER STROKE
HC POWER DRIVE 88H
KAPPES LADY IRISH F88
LCHMAN LUCKY BUCK 7049C
TRIPLE C GO GIRL K34G
TRIPLE C REWARDS QUEEN H

A.I. Sire: Triple C Invasion R47K
A.I. Date: 5-20-08
Est. Plan Mating EPDs:
10 1.1 31 62 4 8 24 20
CW 1.3 YG -.09 Marb .20
BF .02 REA .46
API 113 TI 65

EPDs	
CE	8
BW	0.5
WW	32
YW	65
MCE	5
MM	7
MWW	23
STAY	23
CW	2.1
YG	-.11
Marb	.12
BF	.01
REA	.48
API	115
TI	64

Girl Talk ultrasounded one of the biggest ribeyes of the entire group. She is typical of the Go Girl x Power Drive matings – big middled, soft in her design, wide in her skeleton and, best of all, really free moving. She is easy keeping and moderate sized, but best of all, she possesses that added value the Go Girls have. There are far too many to name, but one of the most recent Power Drive x Go Girl progeny, Power Dozer, was named Reserve Grand Champion Bull at the 2008 NWSS in Denver for Parke and Nina Vehslage (IN). Buy Girl Talk with confidence – she will work for you.



Triple C Go Girl K34G



Triple C Passion
Owned by Rolling Hills and shown by Koty Beth Allen Champion or Reserve at several shows this summer
Sold in the 2007 Millennium X Sale
Full sister to Lots 7, 10 & 10A



Lot 10

10 Triple C Go Go T608

Homozygous Black Homozygous Polled PB Female ASA#2386190
Tattoo: T608 BD: 2-18-07 Adj. BW: 77 ET Adj. WW: 586

A.I. Sire: Triple C Singletary S3H
A.I. Date: 5-21-08
Est. Plan Mating EPDs: 12 -0.8 30 57 2 10 25 21
CW -4.7 YG -.14 Marb .26 BF .00 REA .38 API 125 TI 69

EPDs	
CE	10
BW	0.9
WW	35
YW	64
MCE	3
MM	9
MWW	26
STAY	20
CW	1.6
YG	-.10
Marb	.04
BF	-.01
REA	.29
API	105
TI	63

What a mating this has been. Both Go Girl and Invasion are currently establishing themselves as breed greats. Go Girl continuously produces valuable cattle that excel both phenotypically as well as genetically. Invasion is proving to be not only a great carcass sire, but a calving ease leader as well. The homozygous polled and homozygous black Go Go and Anticipation are long and clean made individuals that excel in style and balance. Both are bred to Singletary, our exciting homozygous black and homozygous polled Shear Force son.

Pedigree for
Lots
10 & 10A

SRS J914 PREFERRED BEEF
TRIPLE C INVASION R47K
HOOKS KARRIE 47K
LCHMAN LUCKY BUCK 7049C
TRIPLE C GO GIRL K34G
TRIPLE C REWARDS QUEEN H

10A Triple C Anticipation T318

Homozygous Black Homozygous Polled PB Female ASA#2386186
Tattoo: T318 BD: 2-23-07 Adj. BW: 76 ET Adj. WW: 675

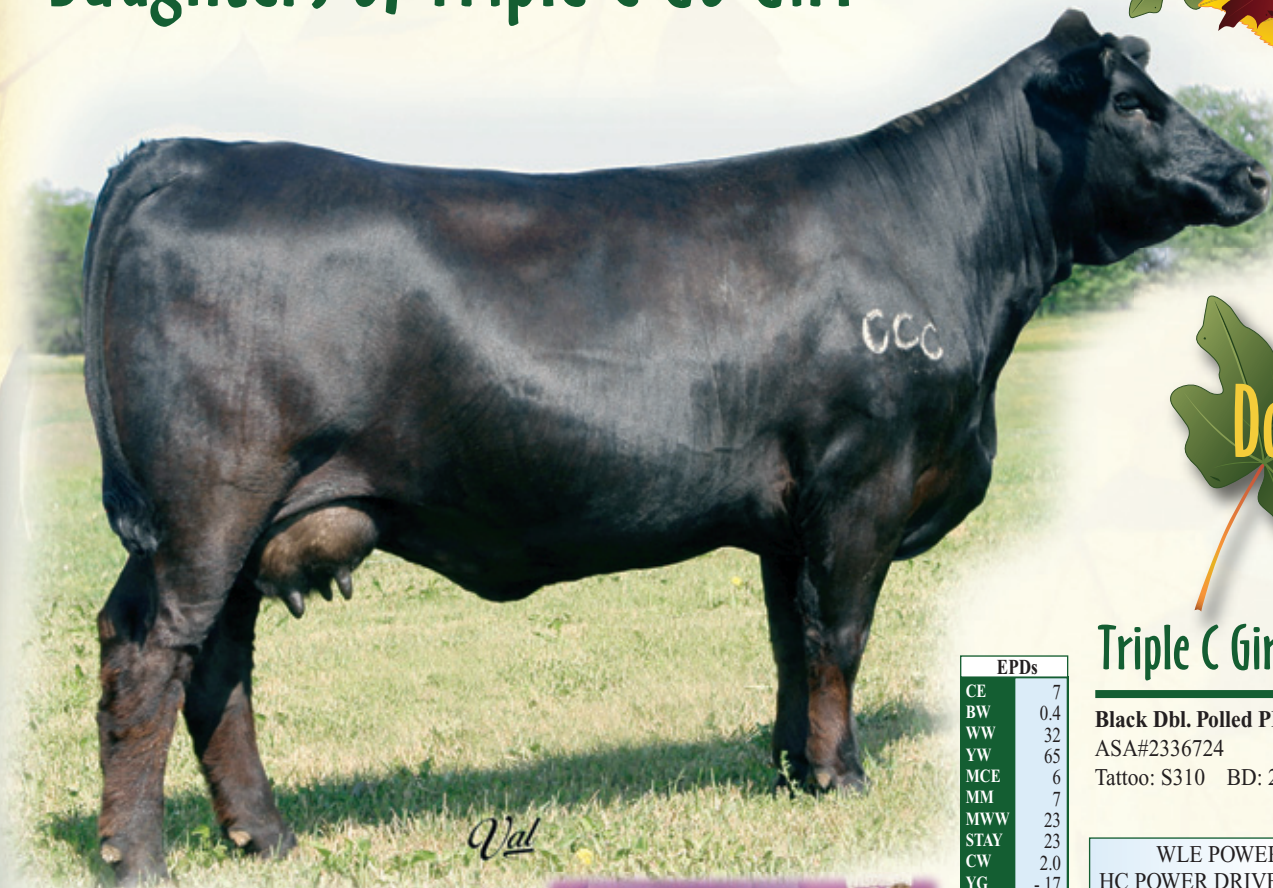
A.I. Sire: Triple C Singletary S3H
A.I. Date: 6-14-08
Est. Plan Mating EPDs: 12 -0.8 30 57 2 10 25 21
CW -4.7 YG -.15 Marb .38 BF .01 REA .44 API 131 TI 72

EPDs	
CE	10
BW	0.9
WW	35
YW	64
MCE	3
MM	9
MWW	26
STAY	20
CW	1.6
YG	-.13
Marb	.27
BF	.00
REA	.40
API	118
TI	69



Lot 10A

Daughters of Triple C Go Girl



Triple C Girlfriend S310

EPDs	
CE	7
BW	0.4
WW	32
YW	65
MCE	6
MM	7
MWW	23
STAY	23
CW	2.0
YG	-.17
Marb	.21
BF	.02
REA	.69
API	119
TI	66

Black Dbl. Polled PB Female
 ASA#2336724
 Tattoo: S310 BD: 2-9-06

- WLE POWER STROKE
- HC POWER DRIVE 88H
- KAPPES LADY IRISH F88
- LCHMAN LUCKY BUCK 7049C
- TRIPLE C GO GIRL K34G
- TRIPLE C REWARDS QUEEN H

Val

Girlfriend was Paul Sandman's pick of our herd in Denver from 2006 for \$17,500. He is offering two sets of embryos, one sired by Invasion and another sired by Dream Catcher; Paul was kind enough to let Koty Beth show Girlfriend last year where she won numerous championships for her. Two of her most prestigious wins were Champion Female at the Wisconsin State Fair and Reserve Champion Female at the Minnesota State Fair. This Power Drive x Go Girl young cow has impressed many with her moderation in frame, depth of middle and flawless udder design. If that's not enough, check out her impeccable genetic values. She could have the most balanced set of EPDs that I'm aware of - with possibly the largest REA of .69. These embryos could put you in the forefront of Simmental genetics.



Triple C Girlfriend S310
 Champion Female
 2007 Wisconsin State Fair



11 Selling 3 Frozen Embryos of Triple C Girlfriend S310 x Triple C Invasion R47K

- SRS J914 PREFERRED BEEF
- TRIPLE C INVASION R47K
- HOOKS KARRIE 47K
- HC POWER DRIVE 88H
- TRIPLE C GIRLFRIEND S310
- TRIPLE C GO GIRL K34G

Est. Plan Mating EPDs:
 10 1.1 31 62 4 8 24 20
 CW 1.3 YG -.09 Marb .23 BF .03 REA .50
 API 114 TI 66
 Consigned by: Paul Sandman
 Selling three #1 frozen embryos, guaranteeing one pregnancy if work is done by a certified embryologist.



11A Selling 5 Frozen Embryos of Triple C Girlfriend S310 x WAGR Dream Catcher 03R

- CNS DREAM ON L186
- WAGR DREAM CATCHER 03R
- 3C MELODY M668 BZ
- HC POWER DRIVE 88H
- TRIPLE C GIRLFRIEND S310
- TRIPLE C GO GIRL K34G

Est. Plan Mating EPDs:
 10 1.1 37 67 6 3 22 21
 CW 3.8 YG -.05 Marb .33 BF .03 REA .42
 API 123 TI 71
 Consigned by: Paul Sandman
 Selling five #1 frozen embryos, guaranteeing two pregnancies if work is done by a certified embryologist.



Daughters of Hart Hollywood Queen E700



Hart Hollywood Queen E700



12 Triple C Over The Top Uoqj

Black Dbl. Polled 1/2 SM 1/2 AN Female ASA#2439875
Tattoo: U09J BD: 1-3-08 Adj. BW: 90 ET Adj. WW: 719

G A R GRID MAKER
TC GRID TOPPER 355
TC PRIDE 8067
BLACK MAX
HART HOLLYWOOD QUEEN E700
SGT P13

Over and over Queen produces one of our best of the year. Over the Top fits that profile. She is extremely deep bodied from heart girth to rear flank. She is wide at the base with added muscle dimension. She is moderate in her frame and soft in her design. This youngster has been good since the day she was born. If you need a percentage female to go after some scholarship money, then this may be the one.

EPDs	
CE	*
BW	0.5
WW	33
YW	64
MCE	*
MM	-1
MWW	16
STAY	-
CW	1.5
YG	.24
Marb	.30
BF	.03
REA	-.50
API	100
TI	62

13 Triple C Ribbons & Roses T785

Black Dbl. Polled 1/2 SM 1/2 AN Female ASA#2440591
Tattoo: T785 BD: 2-4-07 Adj. BW: 75 ET Adj. WW: 619

RITO 9FB3 OF 5H11 FULLBACK
DAMERON P V F RAPTOR 702
DAVIS PROVEN QUEEN 3026
BLACK MAX
HART HOLLYWOOD QUEEN E700
SGT P13

A.I. Sire: Triple C Invasion R47K
A.I. Date: 5-22-08
Est. Plan Mating EPDs:
6 0.4 25 51 1.4 6 19 -
CW -6.5 YG .05 Marb .23
BF .02 REA -.06
API 95 TI 56

Est. EPDs	
CE	*
BW	-0.8
WW	21
YW	42
MCE	*
MM	4
MWW	14
STAY	-
CW	-13.4
YG	.15
Marb	.18
BF	.01
REA	-.54
API	95
TI	54



Lot 13

Ribbons & Roses is another halfblood Queen daughter. She excels in femininity and length. She is extra appealing and has adequate depth and muscle. This young bred heifer is one we should be keeping – we could all use a truckload of females just like her.

JUNIORS!

Win with Triple C genetics and earn money for college!

Triple C Farms Believes in Education & YOU!

Check out the Triple C Scholarship Program on Page 2 of this catalog.

Daughters of Triple C Crazy Queen



Triple C Crazy Queen L98

Co-Owned by Triple C Farms and Rolling Hills Farms, AR

14 TCF RHF Melanie U3H

Homozygous Black Dbl. Polled PB Female ASA#2439896
Tattoo: U3H BD: 2-4-08 Adj. BW: 88 ET Adj. WW: 695



Pedigree and EPDs for Lots 14, 14A & 14B

SRS J914 PREFERRED BEEF
TRIPLE C INVASION R47K
HOOKS KARRIE 47K
HC POWER DRIVE 88H
TRIPLE C CRAZY QUEEN L98
HART HOLLYWOOD QUEEN E700

EPDs		Carcass	
CE	7	CW	-6.8
BW	1.0	YG	-.06
WW	25	Marb	.13
YW	49	BF	.01
MCE	4	REA	.20
MM	5	API	98
MWW	17	TI	58
STAY	18		

Breeder: Triple C and Rolling Hills Farms These Crazy Queen daughters are the right kind – moderate framed, wide in their skeleton, free in their movement and combined into a very attractive package.

Crazy Queen does an awesome job producing both bulls and females that excel their contemporaries. These girls have a full brother, "Redemption" that will definitely turn heads in the beef industry. Selling choice of three heifers. Triple C and Rolling Hills will each retain one.



Lot 14

14A TCF RHF Monoco U04G

Homozygous Black Dbl. Polled PB Female ASA#2439894
Tattoo: U04G BD: 2-4-08 Adj. BW: 84 ET Adj. WW: 674

14B TCF RHF Miranda U1985

Homozygous Black Dbl. Polled PB Female ASA#2439897
Tattoo: U1985 BD: 2-5-08 Adj. BW: 93 ET Adj. WW: 681

14C Selling Pregnancy of Triple C Crazy Queen L98 x STCC Sheriff Taylor 232T due 3-14-09

Pedigree and Est. Planned Mating EPDs for Lots 14C & 14D

3C MACHO M450 BZ
STCC SHERIFF TAYLOR 232T
AUNT BEA
HC POWER DRIVE 88H
TRIPLE C CRAZY QUEEN L98
HART HOLLYWOOD QUEEN E700

Est. Plan Mating EPDs:
* .80 22 41 * 0 11 -
CW -12.1 YG -.03 Marb .06
BF -.01 REA -.09
API 89 TI 51

14D Selling 3 Frozen Embryos of Triple C Crazy Queen L98 x STCC Sheriff Taylor 232T

Breeder: Triple C and Rolling Hills Farms What a mating! The outcome of this mating could be breed changing. Crazy Queen has always produced cattle that are thick made, big footed and loaded with growth. Sheriff Taylor, one of ABS Global's hottest bulls, is an attractive, structurally correct newcomer that is thick topped and backed by an awesome donor, Aunt Bea. Offering a mating with such greats as Power Drive, Hollywood Queen, Macho and Aunt Bea in the pedigree make this one of the most intriguing lots in the sale this year. The pregnancy offered as Lot 14D will be one of the first Sheriff Taylor calves to be born. We are confident this mating will exceed all expectations.

Selling three #1 frozen embryos, guaranteeing one pregnancy if work is done by a certified embryologist.

15 Triple C Crazy About It T026N

Homozygous Black Dbl. Polled PB Female ASA#2386233 Tattoo: T026N BD: 1-25-07 Adj. BW: 81 ET Adj. WW: 668

SRS J914 PREFERRED BEEF
TRIPLE C INVASION R47K
HOOKS KARRIE 47K
HC POWER DRIVE 88H
TRIPLE C CRAZY QUEEN L98
HART HOLLYWOOD QUEEN E700

A.I. Sire: Triple C Singletary S3H A.I. Date: 5-23-08
Est. Plan Mating EPDs: 10 -0.8 25 50 2 8 21
CW -8.9 YG -.11 Marb .41 BF .01 REA .27 API 127 TI 68

Crazy About It has been a favorite here for a long time. She is long spined, deep sided and has genetic values that a person can sure work with. Her mother Crazy Queen is the most phenotypically impressive cow here. She is simply powerful. T026N sells bred to Singletary, our full brother to Bettis and L. Taylor.

EPDs		Carcass	
CE	7	CW	-6.8
BW	1.0	YG	-.04
WW	25	Marb	.34
YW	49	BF	.00
MCE	4	REA	.07
MM	5	API	109
MWW	17	TI	63
STAY	18		

Daughters of Triple C Crazy Queen

16 TCF RHF EXTrodinair U335

Black Dbl. Polled 1/2 SM 1/2 AN Female ASA#2439903
Tattoo: U335 BD: 2-19-08 Adj. BW: 81 ET Adj. WW: 637

Pedigree and EPDs for Lots 16 & 16A

EMULATION N BAR 5522
N BAR EMULATION EXT
N BAR PRIMROSE 2424
HC POWER DRIVE 88H
TRIPLE C CRAZY QUEEN L98
HART HOLLYWOOD QUEEN E700

EPDs	
CE	*
BW	-1.5
WW	22
YW	50
MCE	*
MM	3
MWW	14
STAY	-
CW	-9.3
YG	.19
Marb	.24
BF	.05
REA	-.27
API	102
TI	59



Lot 16

SELLING CHOICE!
Lots 16 & 16A

16A TCF RHF EXTTravaganza U15M

Black Dbl. Polled 1/2 SM 1/2 AN Female ASA#2439904
Tattoo: U15M BD: 2-21-08 Adj. BW: 82 ET Adj. WW: 712

Breeder: Triple C Farms and Rolling Hills Farm When Jimmie Dickerson of Rolling Hills Farms purchased half interest in Crazy Queen, Chris Sweat said we have to flush her to EXT. Wow, what a set of calves! Extrodinair and Extravaganza are picture perfect. They are freaky fronted, level topped, big middled, extremely sound structured heifers that continue to get more impressive as they mature. If you are serious about raising the best halfbloods available from genetics to phenotype, these two are a must. Selling choice of these two females, and Triple C and Rolling Hills will retain the other.



Lot 16A

Granddaughters of Hart Hollywood Queen E700

Triple C Crazy Queen L98

17 Triple C Pricella T185P

Black Dbl. Polled 3/4 SM 1/4 AN Female ASA#2393719
Tattoo: T185P BD: 4-7-07 Adj. BW: 91 Adj. WW: 729

LUCAS WESTERN CUTTER 374
GFI GENERAL R049
3C KROCUS K049 B
BON VIEW NEW DESIGN 1407
TRIPLE C PRICELLA P185
HART HOLLYWOOD QUEEN E700

A.I. Sire: Triple C Singletary S3H
A.I. Date: 5-21-08
Est. Plan Mating EPDs:
* -0.1 34 61 * 6 22 -
CW -1.5 YG -.05 Marb .26 BF .02
REA .27 API 111 TI 66

EPDs	
CE	*
BW	2.4
WW	41
YW	71
MCE	*
MM	0
MWW	21
STAY	-
CW	7.9
YG	.07
Marb	.04
BF	.02
REA	.07
API	90
TI	61

A little different twist here on the pedigree. T185P is a daughter of our Western Cutter son from Gramms out of a New Design 1407 halfblood Hollywood Queen daughter. Pricella is extra clean in her lines and smooth in her design. She is an attractive heifer that will make some lucky new owner a nice addition to their herd.



Lot 17

18 Triple C Nanny T222N

Black Dbl. Polled PB Female ASA#2393726
Tattoo: T222N BD: 3-27-07 Adj. BW: 79 Adj. WW: 615

HC POWER DRIVE 88H
TRIPLE C EL PODEROSO REY
JSF FIESTA
CIRCLE S LEACHMAN 600U
TRIPLE C QUEEN NAN N222
HART HOLLYWOOD QUEEN E700

Nanny has one of those old reliable pedigrees. She is a Raymond out of a 600U Hollywood Queen cow. We have proven time and time again this takes the guesswork out of breeding cattle - it simply works and has again with Nanny. She is an attractive female that moves with ease and possesses the fleshing ability that is so desirable. Even better yet, she sell bred to Invasion.

EPDs	
CE	10
BW	-0.5
WW	28
YW	53
MCE	4
MM	0
MWW	14
STAY	21
CW	-6.5
YG	.00
Marb	.33
BF	.00
REA	-.04
API	122
TI	66

A.I. Sire: Triple C Invasion R47K A.I. Date: 6-20-08
Est. Plan Mating EPDs: 10 0.6 29 56 3 5 19 19
CW -3.1 YG -.03 Marb .31 BF .02 REA .20
API 117 TI 66

19 Triple C Drama T75P

Black Polled PB Female ASA#2393721
Tattoo: T75P BD: 4-3-07 Adj. BW: 88 Adj. WW: 665

TMPF KEEP DREAMIN
JBS RENOWN P552
JBS K552
TRIPLE C EL PODEROSO REY
TRIPLE C DRAMA QUEEN P75
HART HOLLYWOOD QUEEN E700

Drama is the natural calf out of my favorite Queen daughter here. Drama is as long as a well rope, attractive fronted, exceptionally sound while maintaining body depth and base width. It's a shame she didn't like the picture pen, because she has something to show everyone. Her Invasion calf will be special.

A.I. Sire: Triple C Invasion R47K A.I. Date: 6-20-08
Est. Plan Mating EPDs: 9 1.7 30 54 3 4 19 18
CW -2.8 YG .02 Marb .14 BF .03 REA .10
API 102 TI 61

EPDs	
CE	8
BW	1.7
WW	29
YW	49
MCE	3
MM	-1
MWW	14
STAY	20
CW	-5.9
YG	.09
Marb	-.01
BF	.02
REA	-.24
API	93
TI	54

Daughters of Hooks Karrie 47K



Triple C Invasion R47K

Full Brother to Lots 20, 21, 21A, 21B & 21C

20 Triple C Mistress Karrie U984

Homozygous Black Dbl. Polled PB Female ASA#2439889
Tattoo: U984 BD: 2-1-08 Adj. BW: 80 ET Adj. WW: 641

LRS PREFERRED STOCK 370C
SRS J914 PREFERRED BEEF
SRS G733 GLIMMER
GW LUCKY STRIKE 147G
HOOKS KARRIE 47K
HOOKS BLACK MANDY 21F

This fancy made youngster is a full sister to Invasion. She is extended in her skeleton and feminine about her front. Check out her genetic values. Most are in the top 10% of the breed, especially her

EPDs	
CE	7
BW	0.9
WW	29
YW	54
MCE	3
MM	8
MWW	23
STAY	17
CW	-3.8
YG	-.08
Marb	.53
BF	.02
REA	.38
API	120
TI	71

carcass EPDs with her over-the-top Marbling value. Mistress Karrie will make an awesome donor when matured.

21 Triple C Karen T722

Homozygous Black Dbl. Polled PB Female ASA#2386139
Tattoo: T722 BD: 3-25-07 Adj. BW: 81 ET Adj. WW: 647

A.I. Sire: Triple C L. Taylor A.I. Date: 5-22-08
Est. Plan Mating EPDs: 11 -0.8 27 52 2 10 24 20 CW -7.4 YG -.13
Marb .52 BF .02 REA .45 API 133 TI 73

EPDs		Carcass	
CE	7	CW	-3.8
BW	0.9	YG	-.13
WW	29	Marb	.69
YW	54	BF	.01
MCE	3	REA	.46
MM	8	API	129
MWW	23	TI	75
STAY	17		



21A Triple C Kara T529

Homozygous Black Dbl. Polled PB Female ASA#2386137
Tattoo: T529 BD: 3-27-07 Adj. BW: 101 ET Adj. WW: 646

A.I. Sire: Triple C L. Taylor A.I. Date: 6-17-08
Est. Plan Mating EPDs: 11 -0.8 27 52 2 10 24 20
CW -7.4 YG -.11 Marb .34 BF .02 REA .40 API 123 TI 68

EPDs		Carcass	
CE	7	CW	-3.8
BW	0.9	YG	-.10
WW	29	Marb	.32
YW	54	BF	.01
MCE	3	REA	.36
MM	8	API	108
MWW	23	TI	66
STAY	17		

SELLING THREE CHOICES!

Lots 21, 21A, 21B & 21C
Triple C will retain the fourth.

21B Triple C Kay T318P

Homozygous Black Dbl. Polled PB Female ASA#2386134
Tattoo: T318P BD: 3-24-07
Adj. BW: 74 ET Adj. WW: 734

A.I. Sire: Triple C L. Taylor A.I. Date: 7-6-08
Est. Plan Mating EPDs: 11 -0.8 27 52 2 10 24 20
CW -7.4 YG -.08 Marb .51
BF .04 REA .46 API 132 TI 73

EPDs	
CE	7
BW	0.9
WW	29
YW	54
MCE	3
MM	8
MWW	23
STAY	17
CW	-3.8
YG	-.04
Marb	.67
BF	.05
REA	.47
API	127
TI	75



21C Triple C Katlyn TN07

Homozygous Black Dbl. Polled PB Female ASA#2386136
Tattoo: TN07 BD: 3-27-07 Adj. BW: 83 ET Adj. WW: 684

A.I. Sire: Triple C L. Taylor A.I. Date: 6-11-08
Est. Plan Mating EPDs: 11 -0.8 27 52 2 10 24 20
CW -7.4 YG -.12 Marb .46 BF .03 REA .45 API 129 TI 71

EPDs		Carcass	
CE	7	CW	-3.8
BW	0.9	YG	-.11
WW	29	Marb	.57
YW	54	BF	.02
MCE	3	REA	.45
MM	8	API	122
MWW	23	TI	72
STAY	17		

Daughters of FC No Joke



Lots 22 and 22A are maternal sisters to: No Doubt, a leading Triple C donor; FC No Wonder, 2007 AJSA National Classic Champion Heifer; Jokes Promise, a donor at Tarrs in Illinois; Lizzie, high-selling bred in the 2007 Millennium X Sale and donor for Valerie Mackey in Pennsylvania; Lola, second high-selling bred in the 2007 Millennium X Sale, now owned by Hudson Pines Farm of New York; and Ambition, a high-selling bred in the 2008 Lone Star Revue, sale going to the Walthers family in Texas. As you can tell, these girls will make tremendous show heifers and, better yet, donor cows. These two girls are on track to greatness, and no matter where you live or what aspect of the beef industry you are involved with this cow family works!

22 Triple C Lady Emerald U018

Black Dbl. Polled PB Female ASA#2439877
Tattoo: U018 BD: 1-5-08 Adj. BW: 87 ET Adj. WW: 717

WLE POWER STROKE
TCF POWER DRIVE R2411
KAPPES LADY IRISH F88
PVF-BF BF26 BLACK JOKER
FC NO JOKE
FC JOY Y26

Lady Emerald is sired by our oldest Power Drive clone R2411. She is massive in her make up and kind. U018 is level topped, deep middled and has plenty of muscle.

EPDs	
CE	6
BW	1.3
WW	26
YW	56
MCE	4
MM	5
MWW	18
STAY	22
CW	-1.5
YG	.02
Marb	.00
BF	.05
REA	.27
API	.97
TI	.56



FC No Wonder - Champion Heifer 2007 AJSA National Classic XXVIII
Owned by the Tarr Family, IL. Bred by Triple C Farms
Maternal sister to Lots 22 & 22A



22A Triple C Lady Esther U529

Black Dbl. Polled PB Female ASA#2439906
Tattoo: U529 BD: 3-2-08 Adj. BW: 80 ET Adj. WW: 714

WLE POWER STROKE
TCF POWER DRIVE R2412
KAPPES LADY IRISH F88
PVF-BF BF26 BLACK JOKER
FC NO JOKE
FC JOY Y26

Lady Ester is sired by our middle Power Drive clone R2412. She is extremely nice fronted with plenty of rib shape and is as free moving as a cat.

EPDs	
CE	6
BW	1.3
WW	26
YW	56
MCE	4
MM	5
MWW	18
STAY	22
CW	-1.5
YG	.02
Marb	.00
BF	.05
REA	.27
API	.97
TI	.56



Triple C Lola S31K
Owned by Hudson Pines Farms, NY
Maternal sister to Lots 22 & 22A



Triple C Lizzie S83L
Owned by SVJ Farms, Valerie Mankey, PA
Maternal sister to Lots 22 & 22A



Triple C Ambition S26L
Owned by the Walthers Family, TX
Maternal sister to Lots 22 & 22A

Daughters of Triple C No Doubt



Triple C
No Doubt
N26L

23 Triple C Made Perfect T428

Homozygous Black Homozygous Polled PB Female ASA#2386215
Tattoo: T428 BD: 2-4-07 Adj. BW: 86 ET Adj. WW: 659

GW TAILOR MADE 515A
MADE BLACK 727C
GW MISS STAR 007Z
HC POWER DRIVE 88H
TRIPLE C NO DOUBT N26L
FC NO JOKE

A.I. Sire: Triple C Invasion R47K
A.I. Date: 7-23-08
Est. Plan Mating EPDs:
9 1.4 26 53 2 8 21 19
CW -3.4 YG .07 Marb .30
BF .03 REA .33
API 110 TI 63

EPDs	
CE	7
BW	1.1
WW	22
YW	47
MCE	1
MM	6
MWW	17
STAY	20
CW	-7.2
YG	.20
Marb	.31
BF	.12
REA	.22
API	110
TI	61

Made Perfect is named appropriately. She is long spined, wide base and has more style than ever needed. She is a proud heifer that walks with authority and grace. Talk about a cow family – from her mother to her grandmother and great grandmother, this youngster excels. If you need a front pasture donor that will stamp her progeny with that cool look, then you should seriously consider this homozygous black and homozygous polled female.



Lot 23

24 Triple C Absolutely T12M

Homozygous Black Homozygous Polled PB Female ASA#2393729
Tattoo: T12M BD: 4-9-07 Adj. BW: 93 ET Adj. WW: 781

SRS J914 PREFERRED BEEF
TRIPLE C INVASION R47K
HOOKS KARRIE 47K
HC POWER DRIVE 88H
TRIPLE C NO DOUBT N26L
FC NO JOKE

A.I. Sire: Triple C Singletary S3H
A.I. Date: 7-4-08
Est. Plan Mating EPDs:
11 -0.8 26 53 2 9 22 21
CW -6.6 YG -.12 Marb .29
BF .02 REA .40
API 122 TI 66

EPDs	
CE	7
BW	1.0
WW	27
YW	56
MCE	3
MM	7
MWW	21
STAY	19
CW	-2.2
YG	-.06
Marb	.10
BF	.02
REA	.32
API	101
TI	58

Deep and massive can best describe this Invasion x No Doubt daughter. She is extra deep in her rear flank as well as in her heart. She is just massive on the profile and even more impressive from the rear. Study the cow families represented here. She sells bred to Singletary, our high-selling bull in the 2007 Denver sale going to our good friends at Remington Cattle in Canada. Just as her name implies, Absolutely will work for anyone. Homozygous black and homozygous polled.



Lot 24

TRIPLE C FARMS
SIMMENTALS

Premier Exhibitor
2008 National Western
Stock Show



We look forward to seeing
all of you on October 4 at
the Millennium XI Sale!

SALE DAY PHONES

715-265-7093 Office
612-859-7711, 715-684-9222
612-805-7405

Fancy Millennium XI Open Heifers



25 Triple C Sabrina U44L

Black Baldy Dbl. Polled PB Female ASA#2439886
Tattoo: U44L BD: 1-4-08 Adj. BW: 90 Adj. WW: 736

HC POWER DRIVE 88H
TRIPLE C POWER PLUS N23L
TRIPLE C SHINEY L23D
HSF HANK 1H
BS MISS HANK 44L
HAAS RANCH F44

Sabrina is a unique individual. This baldy female is fancy fronted, wide topped and thick throughout. She weaned off one of the heaviest of her contemporaries. Her mother sells as lot #77. If style with performance is what you need, then Sabrina is the one.

EPDs	
CE	3
BW	2.8
WW	39
YW	68
MCE	4
MM	6
MWW	25
STAY	19
CW	7.0
YG	.06
Marb	.16
BF	.03
REA	.12
API	97
TI	65

26 Triple C Heart Throb U703

Black Dbl. Polled PB Female ASA#2439885
Tattoo: U703 BD: 1-5-08 Adj. BW: 81 Adj. WW: 638

SRS J914 PREFERRED BEEF
TRIPLE C INVASION R47K
HOOKS KARRIE 47K
HC POWER DRIVE 88H
TRIPLE C WILD THING M703
G&L BLACK TESS 100F

Heart Throb is a high performing Invasion daughter that is out of our fanciest designed Power Drive cow at Triple C. This youngster is deep middled, wide sprung and attractive in her appearance. A full sister last year sold to the Donnelly family (MN).

EPDs	
CE	8
BW	0.1
WW	24
YW	49
MCE	3
MM	7
MWW	19
STAY	19
CW	-7.7
YG	-.05
Marb	.13
BF	.01
REA	.17
API	102
TI	59



27 Triple C Empress U207

Black Dbl. Polled 3/4 SM 1/4 AN Female ASA#2439880
Tattoo: U207 BD: 1-1-08 Adj. BW: 80 Adj. WW: 566

LCHMAN LUCKY BUCK 7049C
TRIPLE C MAJIC MAN M211
FF MS FRAULEIN F166
HC POWER DRIVE 88H
TRIPLE C HALF POWER M207
OSU KJ 9FB3 EMERALD 7144

Empress is a Majic Man out of our best looking halfblood cow here. Empress is long in her design and attractive in her appearance. Take her home with confidence as these Majic Mans get better every day you own them.

EPDs	
CE	3
BW	-0.9
WW	19
YW	49
MCE	6
MM	15
MWW	25
STAY	-
CW	-9.0
YG	-.03
Marb	.29
BF	.03
REA	.22
API	107
TI	59

28 Triple C Susan U030

Black Polled PB Female ASA#2439878
Tattoo: U030 BD: 1-1-08 Adj. BW: 80 Adj. WW: 649

SRS J914 PREFERRED BEEF
TRIPLE C INVASION R47K
HOOKS KARRIE 47K
HC POWER DRIVE 88H
TRIPLE C SADIE L030
JDJ SUSANS SABLE 030J

If we've learned one thing this year, it's Invasion works well on Power Drive females. Susan fits the mold nicely she is level topped, wide sprung and adequate muscled. This cow family has never let us down. Her mother sells as Lot#78.

EPDs	
CE	8
BW	0.1
WW	34
YW	71
MCE	3
MM	9
MWW	26
STAY	20
CW	5.3
YG	-.06
Marb	.18
BF	.02
REA	.45
API	111
TI	68

Online Internet viewing will be available for Millennium XI on edjecast.com!

29 Triple C Lady Jenna U181

Black Dbl. Polled PB Female ASA#2439884
Tattoo: U181 BD: 1-1-08 Adj. BW: 94 Adj. WW: 686

ELLINGSON BLACK PERFECTOR
GFI MAGNUM K52
RIV BLK JOSIE 43B 755G
3C FULL FIGURES C288 BLK
PVF LADY LIBERTY 181L
BDV ARLENE E81

Lady Jenna will certainly catch your attention on sale day. She is an attractive made heifer being long fronted and clean and neat about her type. Her mother sells as Lot #89 and her maternal sister as Lot #51.

EPDs	
CE	5
BW	3.4
WW	39
YW	66
MCE	2
MM	2
MWW	22
STAY	20
CW	6.3
YG	.11
Marb	.18
BF	.02
REA	-.11
API	103
TI	65

30 Triple C Nannie U19N

Black Dbl. Polled PB Female ASA#2439879
Tattoo: U19N BD: 1-2-08 Adj. BW: 81 Adj. WW: 666

SRS J914 PREFERRED BEEF
TRIPLE C INVASION R47K
HOOKS KARRIE 47K
BF 0K34 DAYTONA
RF NANA
RF ABBY K31

This Invasion daughter impresses us with her completeness and balance. She is deep bodied, wide sprung and free moving. Her Daytona mother is soft made and easy fleshing. Nannie will make an outstanding cow for someone.

EPDs	
CE	6
BW	1.0
WW	31
YW	61
MCE	1
MM	7
MWW	22
STAY	21
CW	0.4
YG	-.03
Marb	.16
BF	.02
REA	.25
API	108
TI	63

Fancy Millennium XI Open Heifers

31 Triple C Lolly Pop U316

Black DbL. Polled PB Female ASA#2439918
Tattoo: U316 BD: 1-7-08 Adj. BW: 75 Adj. WW: 680

SRS J914 PREFERRED BEEF
TRIPLE C INVASION R47K
HOOKS KARRIE 47K
HC POWER DRIVE 88H
JF MISS LATISHA 316N
THSR MISS LATISHA L106

Lolly Pop's mother was a sister to Janssen Farm's high-selling open heifer one year. This cow family is doing a nice job for a lot of progressive Simmental breeders. Lolly Pop is well balanced from nose to tail. She is thick throughout being long spined and fluid in her movement. Invasion is doing a great job of siring fault-free, low maintenance females that are sure to make the right kind of cows.

EPDs	
CE	8
BW	-0.4
WW	28
YW	57
MCE	2
MM	9
MWW	24
STAY	18
CW	-4.2
YG	-0.8
Marb	.15
BF	.01
REA	.31
API	105
TI	63



32 Triple C Cheerleader U7144

Black DbL. Polled 3/4 SM 1/4 AN Female ASA#2439899
Tattoo: U7144 BD: 1-22-08 Adj. BW: 88 Adj. WW: 567

LCHMAN LUCKY BUCK 7049C
TRIPLE C MAJIC MAN M211
FF MS FRAULEIN F166
HC POWER DRIVE 88H
TRIPLE C CHEERS L7144
OSU KJ 9FB3 EMERALD 7144

This Majic Man x Cheers daughter impresses us with her moderation of frame and ease of fleshing. Cheerleader is deep in her kind and full in her width. Heifers like this make low maintenance, easy keeping, productive cows that will work in any faucet of the beef industry.

EPDs	
CE	3
BW	0.7
WW	22
YW	55
MCE	6
MM	15
MWW	26
STAY	-
CW	-3.0
YG	.00
Marb	.22
BF	.03
REA	.20
API	96
TI	56



Triple C Cheers L7144

33 Triple C Chardenay U7144R

Black DbL. Polled PB Female ASA#2439901
Tattoo: U7144R BD: 1-23-08 Adj. BW: 68 Adj. WW: 620

SRS J914 PREFERRED BEEF
TRIPLE C INVASION R47K
HOOKS KARRIE 47K
TRIPLE C MAJIC MAN M211
TRIPLE C CHAMPAGNE R7144
TRIPLE C CHEERS L7144

Chardenay's mother is a full sister to Cheerleader - Lot #32. This cow family is as impressive as it gets. Such breed greats as OSU Emerald 7144, Cheers, Fraulein, Hooks Karrie and SRS Glimmer are just a few that can be named. With genetics this deep, Chardenay is destined to become a superior cow. She is a full sister to our bull from last year, Champaign, who sold to Curtis Lipe (IL).

EPDs		Carcass	
CE	7	CW	-6.0
BW	-0.5	YG	-0.5
WW	23	Marb	.25
YW	53	BF	.03
MCE	4	REA	.31
MM	16	API	106
MWW	27	TI	60
STAY	-		

34 Triple C Spicy Hot U25N

Black DbL. Polled PB Female ASA#2439883
Tattoo: U25N BD: 1-6-08 Adj. BW: 83 Adj. WW: 683

NICHOLS BLK DESTINY D12
WHEATLAND BULL 131L
WHEATLAND LADY 908J
PVF-BF BF26 BLACK JOKER
TRIPLE C SPICE IS NICE N
TRIPLE C SPICE IT UP K020D

Spicy Hot is a growthy January heifer that is sired by Wheatland Bull 131L "Teddy". We had the opportunity to use Teddy and it sure worked like a charm. The heifers are high performing with plenty of muscle and style. Spicy Hot traces back to our favorite red donor Ginger.

EPDs	
CE	5
BW	1.3
WW	40
YW	68
MCE	2
MM	0
MWW	20
STAY	23
CW	4.5
YG	.01
Marb	-.10
BF	.00
REA	.06
API	97
TI	61

35 Triple C Cowgirl U47N

Black DbL. Horned PB Female ASA#2439882
Tattoo: U47N BD: 1-7-08 Adj. BW: 78 Adj. WW: 587

WLE POWER STROKE
TCF POWER DRIVE R2411
KAPPES LADY IRISH F88
ET JOKERS WILD
CMSC JOKERS COWGIRL
LEAPIN LIZZIE

Cowgirl's mother is one of the nicest designed five year old cows here. Cowgirl is sired by the all time great Power Drive. If you are looking for heifers to take home and make awesome cows, this one will fit the bill. She is sound and deep made.

EPDs	
CE	7
BW	-0.4
WW	22
YW	47
MCE	5
MM	1
MWW	11
STAY	22
CW	-9.8
YG	-.06
Marb	.08
BF	.01
REA	.17
API	106
TI	56

36 Triple C Classic U14N

NICHOLS BLK DESTINY D12
WHEATLAND BULL 131L
WHEATLAND LADY 908J
HC POWER DRIVE 88H
CLASSIC GIRL POWER
CCC MISS BLACK CASINO

Black DbL. Polled PB Female ASA#2439888 Tattoo: U14N BD: 1-24-08
Adj. BW: 82 Adj. WW: 671

The Teddy bull worked really well on our Power Drive cows. Classic is no exception. She is long designed, adequate muscled and stylish made. There is a group of these youngsters that will make nice cows, and Classic is one of them.

EPDs		Carcass	
CE	6	CW	2.4
BW	1.0	YG	-0.1
WW	37	Marb	-0.1
YW	65	BF	.01
MCE	4	REA	.13
MM	0	API	101
MWW	19	TI	62
STAY	23		



Lot 37

37 Triple C Ultimate Baby U108

Black Polled 1/2 SM 1/2 AN Female ASA#2439908
Tattoo: U108 BD: 2-23-08 Adj. BW: 87 ET Adj. WW: 717

Pedigree and EPDs for Lots 37 & 37A

HOOKS SHEAR FORCE 38K
TRIPLE C ULTIMATE FORCE
HART HOLLYWOOD QUEEN E700
RITO 9FB3 OF 5H11 FULLBACK
OSU KJ 9FB3 EMERALD 7144
C&C OSU EMPRESS 434

EPDs		Carcass	
CE	*	CW	-15.6
BW	-2.0	YG	.06
WW	18	Marb	.20
YW	41	BF	.02
MCE	*	REA	-.24
MM	9	API	102
MWW	18	TI	56
STAY	-		



Triple C Cheery N7164
Owned by
Charlie Myerscough
Maternal Sister to
Lots 37 & 37A

37A Triple C High Profile U106

Black Polled 1/2 SM 1/2 AN Female ASA#2439907
Tattoo: U106 BD: 3-4-08 Adj. BW: 70 ET Adj. WW: 641

SELLING
CHOICE!
Lots 37 & 37A

This pair of halfblood youngsters are as good as we've ever produced. They are simply special – phenotypically, genetically and backed by a strong cow family. They don't make them any better. The February born Ultimate Baby appears to be more extreme in her kind. She is long fronted, deep middled and structurally desirable. High Profile has a more moderate skeleton with a long, clean appearance. She is impressive middle and thick bodied. No matter which one you choose these maternal sisters to Charlie Myerscough's Cheery heifer could win you as much scholarship money as she did for him. **Selling choice of Lots 37 & 37A. Triple C will retain one.**



Lot 37A



Lot 38

38 Triple C Cool Kat U34M

Black Baldy Dbl. Polled PB Female ASA#2439900
Tattoo: U34M BD: 1-27-08 Adj. BW: 91 Adj. WW: 722

NICHOLS LEGACY G151
HOOKS SHEAR FORCE 38K
C&D TRACY
HC POWER DRIVE 88H
TRIPLE C COOL BLUE M34
FF MS BLUE VELVET B940

Cool Kat is a Shear Force daughter out of one of our most powerful Power Drive cows who goes back to the Blue Velvet family. This black baldy heifer is deep middled, long fronted and level hipped. She is extra sound and high profiling. Her genetic values are as high and well balanced as its gets.

EPDs	
CE	12
BW	1.9
WW	43
YW	78
MCE	1
MM	9
MWW	30
STAY	23
CW	11.3
YG	-.03
Marb	.20
BF	.01
REA	-.34
API	124
TI	72

39 Triple C Jasmine U185P

Black Dbl. Polled PB Female ASA#Pending
Tattoo: U185P BD: 2-19-08 Adj. BW: 82 Adj. WW: 532

Est. EPDs	
CE	7
BW	1.6
WW	33
YW	61
MCE	5
MM	10
MWW	26
STAY	22
CW	1.1
YG	-.02
Marb	.05
BF	.03
REA	-.25
API	103
TI	61

WLE POWER STROKE
GWS EBONY'S TRADEMARK 6N
NJC EBONY ANTOINETTE
HC POWER DRIVE 88H
B&B JASMINE
B&B BLACK LADY

Jasmine is a result of purchasing embryos from our good friend Chuck Bucholtz in Texas. We should be keeping her, but if you want to get serious about showing one, this Trademark daughter will fit the bill. She

is long, level topped and fancy fronted with enough depth of flank and the right kind of muscle for a heifer her age. As a added bonus, she naturally has that show ring attitude and agility to be a stand out at any level.

40 Triple C Beautiful Babe U31N

Black Dbl. Polled PB Female ASA#2439910
Tattoo: U31N BD: 2-26-08 Adj. BW: 81 Adj. WW: 701

HC POWER DRIVE 88H
TRIPLE C POWER PLUS N23L
TRIPLE C SHINEY L23D
CCR AMERITRADE 155J
TRIPLE C BEAUTIFUL BABE
TRIPLE C SATIN K31C

Beautiful Babe is out of our best Ameritrade daughter. Those Power Plus calves simply grow fast and have that beautiful front end. Beautiful Babe reminds me of Lizzie, our high-selling bred in last year's sale going to Valerie Mackey (PA).

EPDs	
CE	3
BW	0.3
WW	37
YW	65
MCE	2
MM	7
MWW	26
STAY	21
CW	1.4
YG	.02
Marb	.12
BF	.02
REA	-.17
API	104
TI	66

Fancy Millennium XI Open Heifers

41 Triple C Sweet Teddy UzoN

Black Dbl. Polled PB Female ASA#2439898
Tattoo: U20N BD: 2-2-08 Adj. BW: 90 Adj. WW: 705

NICHOLS BLK DESTINY D12
WHEATLAND BULL 131L
WHEATLAND LADY 908J
HC POWER DRIVE 88H
RC MS SWEET POWER
TRIPLE C SWEETHART B397

Sweet Teddy is simply massively designed. She is thick topped, level rumped and has a wide stance. When put in motion, she does it with freedom. If cow families mean anything (and they should), check out Sweet Teddy's. She traces back to the Sweethart cow. If you need a February born show heifer, they don't make them any stouter.

EPDs	
CE	6
BW	2.3
WW	45
YW	80
MCE	4
MM	-3
MWW	19
STAY	21
CW	13.0
YG	.08
Marb	.01
BF	.01
REA	.00
API	102
TI	66



42 Triple C Sugar Babe U6qL

Black Dbl. Polled PB Female ASA#2439913
Tattoo: U69L BD: 2-23-08 Adj. BW: 89 Adj. WW: 603

CNS DREAM ON L186
JS BURNING UP 33R
TRIPLE C BURNING POWER L3
HC POWER DRIVE 88H
QUEEN POWER
TRIPLE C QUEEN OF THE ROAD

A little different pedigree here out of Burning Up, a bull that won Denver for our good friends, the Steenhoeks, from Iowa. Sugar Babe is easily noticed in the group. She defines attractiveness being goose fronted, level topped and deep ribbed. If you are looking for a sleeper on sale day, find her. You will like her. Her mother sells as Lot #80.

EPDs	
CE	8
BW	1.4
WW	29
YW	52
MCE	5
MM	3
MWW	17
STAY	21
CW	-4.7
YG	.00
Marb	.15
BF	.01
REA	.05
API	106
TI	60



JS Burning Up 33R



www.triplecfarms.com

43 Triple C Razzle Dazzle U7zJ

Red Polled PB Female ASA#2439911
Tattoo: U72J BD: 3-2-08 Adj. BW: 81 Adj. WW: 668

HOOKS SHEAR FORCE 38K
TRIPLE C ULTIMATE FORCE
HART HOLLYWOOD QUEEN E700
MEYERS RED TOP
RCC/TCF RAZZMATOP J72
TRIPLE C RAZZMATAZZ F025

Razzle Dazzle will create some of that next summer. This red show heifer prospect combines as many good parts as any heifer offered. We appreciate her balance combining muscle dimension, length of spine, structure and performance into a show

EPDs	
CE	8
BW	-0.4
WW	23
YW	40
MCE	0
MM	6
MWW	18
STAY	22
CW	-14.2
YG	-.04
Marb	.10
BF	-.02
REA	-.19
API	106
TI	58



package. Her sire, Ultimate Force, is doing a great job siring cattle that are clean in their make up, heavy muscled and grow fast. Her grandam is our Razz Ma Tazz cow that we all loved for her easy keeping ability. If you need a red one to show or make an outstanding cow, look her up and you won't be disappointed.

PLAN TO ATTEND MILLENNIUM XI AND YOUR FEMALE COULD BE FREE! ASK FOR DETAILS!

44 Triple C Joliette U8307

NICHOLS BLK DESTINY D12
WHEATLAND BULL 131L
WHEATLAND LADY 908J
HC POWER DRIVE 88H
TRIPLE C JOLIETTE M8307
NICHOLS JOLIETTE 154X

Black Dbl. Polled PB Female ASA#2439909 Tattoo: U8307 BD: 3-2-08
Adj. BW: 77 Adj. WW: 628

Joliette hurt herself in the chute before pictures, so we didn't get one. Complete best describes this Teddy daughter. She is full middled, sound moving and attractive made. The cow family is the same as 107W. She just needs time and feed and she will be a nice one.

EPDs		Carcass	
CE	7	CW	-6.1
BW	-0.6	YG	-.03
WW	30	Marb	-.01
YW	54	BF	.00
MCE	2	REA	-.02
MM	5	API	97
MWW	20	TI	59
STAY	19		

45 Triple C Spice Girl U12R

Black Polled PB Female ASA#2439912
Tattoo: U12R BD: 3-6-08 Adj. BW: 94 Adj. WW: 764

HOOKS SHEAR FORCE 38K
TRIPLE C ULTIMATE FORCE
HART HOLLYWOOD QUEEN E700
G&L AVALANCHE 149F
LAZY H TOUCH ME NOT R12
DRAKE MISS P36D

Spice Girl's mother is a full sister to the Spice Girl that won Denver for Michael Rolfs (IA). Ultimate Force was Calf Champion for us at Denver in 2007. Spice Girl was bred to be a champion, and she has not disappointed us. Study her championship profile – she has that look. She is sleek fronted, neat shouldered, trim middled, explosive rumped and level topped. She moves freely with flex where she should. All this with a "show me" attitude that will definitely help win scholarships.

EPDs	
CE	10
BW	0.7
WW	26
YW	45
MCE	2
MM	5
MWW	18
STAY	19
CW	-9.4
YG	.01
Marb	.09
BF	-.01
REA	-.25
API	102
TI	59



Lot 45



Drake Spice Girl

EPDs	
CE	7
BW	2.6
WW	28
YW	49
MCE	3
MM	0
MWW	14
STAY	22
CW	-4.2
YG	.03
Marb	.05
BF	.02
REA	.02
API	99
TI	55

46 Triple C Bring It On U112

Black Dbl. Polled PB Female ASA#2439915
Tattoo: U112 BD: 3-29-08 Adj. BW: 91 Adj. WW: 743

TMPF KEEP DREAMIN
JBS RENOWN P552
JBS K552
HC POWER DRIVE 88H
TRIPLE C BRING IT ON BAB
TECC GALE 112G

This late March heifer has style and pizzazz all over her. She is up headed, level topped with plenty of muscle expression. Her mother L112, who also sells as Lot #81, is one of my all-time favorite cows. Bring It On's name says it all.



Lot 46

47 Triple C Blackberry U704

Black Dbl. Polled 1/2 SM 1/2 AN Female ASA#2439917
Tattoo: U704 BD: 3-14-08 Adj. BW: 91 Adj. WW: 661

WLE POWER STROKE
TCF POWER DRIVE R2412
KAPPES LADY IRISH F88
V D A R LUCYS BOY
B D V 704 OF LUCYS BOY
H A LADY TRAVELER 9101

Blackberry is a natural calf out of our best Lucy's Boy Angus cow from Begger Ranch, MT. This cow does it every year. Whether bull or heifer, she gets it done. Blackberry is full middled, thick made and will make a nice halfblood cow for anyone.

EPDs	
CE	*
BW	0.8
WW	22
YW	60
MCE	5
MM	5
MWW	16
STAY	-
CW	0.2
YG	.21
Marb	.33
BF	-.07
REA	-.07
API	92
TI	56

48 Triple C Sasha U124

Red Polled PB Female ASA#2439914
Tattoo: U124 BD: 4-2-08
Adj. BW: 83 Adj. WW: 742

HOOKS SHEAR FORCE 38K
TRIPLE C ULTIMATE FORCE
HART HOLLYWOOD QUEEN E700
SAS/ASF ALL STAR
TLRS SASHA
TLRS RED DREAM

This solid red Ultimate Force daughter has been a standout since birth. She is thick in her body design and moves on desirable feet and legs. The Ultimate Force bull is our red Queen son that we own with the Zimmer family (MN). Sasha is just an April heifer, so don't miss this possible scholarship winner.

EPDs	
CE	12
BW	-0.2
WW	30
YW	50
MCE	3
MM	8
MWW	23
STAY	21
CW	-8.0
YG	.04
Marb	.17
BF	.00
REA	-.19
API	114
TI	65



Lot 48

49 Triple C Hot Flash U86

Black Polled Commercial Maine Cross Female Tattoo: U86
BD: 1-4-08 Adj. BW: 79 Adj. WW: 622

Hot Flash will be a favorite on sale day. Her style and charisma will definitely impress you. If you need a crossbred show heifer, here she is. They don't come much better.



Lot 49

View the sale offering
online & videos online at
www.triplecfarms.com or
www.ebersale.com

TRIPLE C FARMS
SIMMENTALS

Daughters of FF Fraulein



50 Triple C She's A Lady T335

Red Polled PB Female ASA#2386167
 Tattoo: T335 BD: 2-12-07 Adj. BW: 88 ET Adj. WW: 647
 A.I. Sire: Triple C Majic Man M211 A.I. Date: 5-31-08
 Est. Plan Mating EPDs: 6 1.4 42 73 7 12 33 20
 CW 7.8 YG -.06 Marb -.02 BF -.01 REA .26 API 98 TI 65

EPDs		Carcass	
CE	8	CW	9.0
BW	1.9	YG	.00
WW	44	Marb	-.04
YW	74	BF	-.01
MCE	6	REA	.05
MM	9	API	99
MWW	31	TI	66
STAY	20		

50A Triple C She's Our Lady T1985

Red Polled PB Female ASA#2386164
 Tattoo: T1985 BD: 2-12-07 Adj. BW: 108 ET Adj. WW: 765
 A.I. Sire: BFCK Cherokee Cnyn 4912 A.I. Date: 5-23-08
 Est. Plan Mating EPDs: * -0.7 38 69 * 3 22 -
 CW 2.3 YG .23 Marb .22 BF .06 REA -.25 API 107 TI 67

EPDs		Carcass	
CE	8	CW	9.0
BW	1.9	YG	-.01
WW	44	Marb	-.11
YW	74	BF	.02
MCE	6	REA	.28
MM	9	API	95
MWW	31	TI	64
STAY	20		

Pedigree for Lots 50 & 50A

BOZ REDCOAT
 ANKONIAN RED CAESAR
 GFI CANDACE G51
 ER BIG SKY 545B
 FF MS FRAULEIN F166
 FF MS CARNATION C77

The full sisters to She's A Lady and She's Our Lady impressed everyone who saw them at last year's Millennium sale with their overall performance

and productivity. These two are out of the same mold. They are big heifers with tremendous performance. Both settled with first A.I. service. If you need cattle that will perform and grow fast, you need these Fraulein daughters.



51 Triple C Lady T181

Black Dbl. Polled PB Female ASA#2386227
 Tattoo: T181 BD: 1-1-07 Adj. BW: 76 Adj. WW: 654

WLE POWER STROKE
 HC POWER DRIVE 88H
 KAPPES LADY IRISH F88
 3C FULL FIGURES C288 BLK
 PVF LADY LIBERTY 181L
 BDV ARLENE E81

A.I. Sire: Triple C Invasion R47K
 A.I. Date: 5-22-08
 Est. Plan Mating EPDs:
 10 0.7 29 60 4 7 21 19
 CW -.03 YG -.05 Marb .24
 BF .03 REA .38
 API 114 TI 65

EPDs	
CE	9
BW	-0.3
WW	28
YW	61
MCE	6
MM	5
MWW	19
STAY	22
CW	-0.9
YG	-0.4
Marb	.19
BF	.03
REA	.32
API	117
TI	64

Lady is one of those really good Power Drive daughters that we should be keeping. Peter said it best, "No matter how many you have, you can never have too many." Lady's structure is flawless. She is deep, long and attractive. Better yet, she is carrying an Invasion baby. Her dam sells as Lot 89.

52 Triple C Rosie T54R

Black Dbl. Polled 3/4 SM 1/4 AN Female ASA#2386112 Tattoo: T54R BD: 3-5-07 Adj. BW: 94 Adj. WW: 520

B/R NEW FRONTIER 095
 GLS FRONTIER N13
 GLS HOSTESS H16
 SRS J914 PREFERRED BEEF
 RCFS ROSIE
 KSR FANCY PANTS 857G

A.I. Sire: Triple C Power Dozer T864
 A.I. Date: 5-29-08
 Est. Plan Mating EPDs:
 4 1.1 38 71 3 5 24 -
 CW 6.3 YG .01 Marb .35 BF .01
 REA .14 API 111 TI 69

Rosie is another Frontier daughter that we purchased in dam at the Minnesota State Sale. This three-quarterblood heifer combines structure, femininity, muscle, depth and genetic values into a very desirable package. She is carrying the service of Power Dozer, our 2008 National Western Reserve Grand Champion Bull, who is owned with PVF Simmentals, Park and Nina Vehslage, IN.

EPDs		Carcass	
CE	*	CW	10.4
BW	1.7	YG	.10
WW	44	Marb	.52
YW	77	BF	.01
MCE	*	REA	-.11
MM	3	API	117
MWW	25	TI	75
STAY	-		

53 Triple C Mickey T4059

Black Dbl. Polled PB Female ASA#2393733 Tattoo: T4059 BD: 3-10-07 Adj. BW: 82 Adj. WW: 698

ELLINGSON BLACK PERFECTOR
 KS ENDZONE P165
 KSR DAWNS DESIRE 281L
 GFI MAGNUM K52
 COTT-GFI MICKEY P4059
 85F

A.I. Sire: Triple C Singletary S3H
 A.I. Date: 5-22-08
 Est. Plan Mating EPDs:
 8 -0.4 30 55 1 8 23 20
 CW -5.1 YG -.05 Marb .32 BF .02
 REA .21 API 118 TI 68

Mickey is a free moving, soft made individual that will make a moderate framed, easy fleshing cow who will be fault free. She is selling bred to our Shear Force x Josie son that we own with Remington Cattle Company (CAN).

EPDs		Carcass	
CE	2	CW	0.7
BW	1.7	YG	.08
WW	34	Marb	.15
YW	60	BF	.02
MCE	2	REA	-.05
MM	4	API	92
MWW	21	TI	60
STAY	17		

Daughters of Lucas Josie



Lot 54



Lucas Josie 19K

54 Triple C Designer Fashion T682M

Black Homozygous Polled PB Female ASA#2386119
Tattoo: T682M BD: 3-16-07 Adj. BW: 81 ET Adj. WW: 519

NICHOLS LEGACY G151
HOOKS SHEAR FORCE 38K
C&D TRACY
ELLINGSON BLACK PERFECTOR
LUCAS JOSIE 19K
RIV BLK JOSIE 43B 755G

A.I. Sire: Triple C Invasion R47K
A.I. Date: 6-18-08
Est. Plan Mating EPDs:
13 -0.5 28 55 2 10 24 20
CW -5.3 YG -.06 Marb .35
BF .04 REA .38
API 125 TI 69

EPDs	
CE	14
BW	-2.5
WW	26
YW	51
MCE	1
MM	11
MWW	24
STAY	23
CW	-10.9
YG	-.06
Marb	.42
BF	.04
REA	.32
API	140
TI	72

The homozygous polled Designer Fashion is a full sister to Bettis, Singletary, Taylor and Sheer Design, a donor at Sanders Ranch (KS) and Sunset View Farms (KY). This Shear Force x Josie flush has generated as much revenue as any at Triple C. We all need to study our lessons here. Evaluate her genetic values as they are impressive. Evaluate her body make up, and you will find it equally impressive. It is hard to imagine that you could combine this much muscle and dimension in a sound structural, moderate framed, attractive package. Her cow family and genetics are as predictable as we can produce. This is why we spend sleepless nights and hours behind a computer in the cattle business so that we might produce cattle like Designer Fashion. We can only imagine how impressive her calf by Invasion will be. Top 1% of the breed for CE, Marbling, API and TI



Triple C Bettis



Triple C L. Taylor



Triple C Singletary

Three powerful daughters of Lucas Josie!

55 Triple C Juliett T23D

Homozygous Black Dbl. Polled PB Female ASA#2386178
Tattoo: T23D BD: 2-17-07 Adj. BW: 90 ET Adj. WW: 694
A.I. Sire: Triple C Queens Pride
A.I. Date: 5-29-08
Est. Plan Mating EPDs: 8 -0.5 25 48 3 5 18 21
CW -9.3 YG -.07 Marb .20 BF .01 REA .15 API 112 TI 62

EPDs		Carcass	
CE	7	CW	-0.7
BW	0.6	YG	-.11
WW	28	Marb	.04
YW	60	BF	.00
MCE	5	REA	.37
MM	3	API	103
MWW	17	TI	59
STAY	21		



Lot 55

Pedigree for Lots 55 & 55A

WLE POWER STROKE
HC POWER DRIVE 88H
KAPPES LADY IRISH F88
ELLINGSON BLACK PERFECTOR
LUCAS JOSIE 19K
RIV BLK JOSIE 43B 755G

These Power Drive x Josie daughters are going to be powerful cows. They may not win any beauty contests, but they are deep, thick and sound. They are two of the higher performing heifers in the entire crop. Juliett is bred to Queen's Pride, our co-high selling bull now owned by Rolling Hills (AR) and full brother to Triple C Ultimate Force, our red bull that has everyone talking. Jamie sells bred to Wheatland Bull 131L "Teddy". We have sampled Teddy and he really works well on Power Drive females.

55A Triple C Jamie T14N

Homozygous Black Dbl. Polled PB Female ASA#2386182
Tattoo: T14N BD: 2-13-07 Adj. BW: 80 ET Adj. WW: 619
A.I. Sire: Wheatland Bull 131L
A.I. Date: 8-12-08
Est. Plan Mating EPDs: 7 0.7 38 67 4 -1 18 22
CW 3.3 YG -.01 Marb .04 BF .01 REA .11 API 105 TI 64

EPDs		Carcass	
CE	7	CW	-0.7
BW	0.6	YG	-.07
WW	28	Marb	.14
YW	60	BF	.02
MCE	5	REA	.33
MM	3	API	108
MWW	17	TI	61
STAY	21		



Lot 55A

All bred heifers in Triple C Millennium XI are A.I. bred! No cleanup bulls were used!



56 Triple C Unique Toob

Black Dbl. Polled 3/4 SM 1/4 AN Female ASA#2393711
 Tattoo: T006 BD: 3-15-07 Adj. BW: 76 Adj. WW: 650
 A.I. Sire: Triple C El Poderoso Rey A.I. Date: 6-12-08
 Est. Plan Mating EPDs: * -0.2 44 81 * 3 25 -
 CW 10.2 YG .06 Marb .32 BF .03 REA .16 API 120 TI 75

Lot 56

Unique and Monique are twin sisters out of a bred heifer we purchased in the Minnesota State Sale from Roger Claeys. These Frontier daughters are loose in their structure, deep middled and trim designed. They possess some impressive growth, API and TI numbers. Both sell bred to Reymond.

B/R NEW FRONTIER 095
 GLS FRONTIER N13
 GLS HOSTESS H16
 ELLINGSON BLACK PERFECTOR
 RCFS MISS BEAUTY
 RCFS LADYBUG

Pedigree and EPDs for Lots 56 & 56A

56A Triple C Monique 006T

Black Dbl. Polled 3/4 SM 1/4 AN Female ASA#2393710
 Tattoo: 006T BD: 3-15-07 Adj. BW: 78 Adj. WW: 583
 A.I. Sire: Triple C El Poderoso Rey A.I. Date: 5-26-08
 Est. Plan Mating EPDs: * -0.2 44 81 * 3 25 -
 CW 10.2 YG .06 Marb .32 BF .03 REA .16 API 120 TI 75

EPDs		Carcass	
CE	*	CW	9.8
BW	0.9	YG	.05
WW	43	Marb	.42
YW	78	BF	.00
MCE	*	REA	-.02
MM	4	API	118
MWW	26	TI	76
STAY	-		



Lot 56A



57 Triple C Diamond Toz3

Black Dbl. Polled PB Female ASA#2386147
 Tattoo: T023 BD: 3-7-07 Adj. BW: 93 Adj. WW: 619

SRS J914 PREFERRED BEEF
 TRIPLE C INVASION R47K
 HOOKS KARRIE 47K
 PTL HIGH ROLLER E052
 TRIPLE C DIAMOND H023
 TRIPLE C MISS X E023

A.I. Sire: Triple C El Poderoso Rey
 A.I. Date: 5-21-08
 Est. Plan Mating EPDs:
 11 0.6 38 71 5 4 23 20
 CW 5.9 YG .07 Marb .19 BF .05 REA .26 API 117 TI 70

EPDs		Carcass	
CE	8	CW	1.2
BW	2.4	YG	.07
WW	32	Marb	.16
YW	59	BF	.05
MCE	3	REA	.18
MM	6	API	103
MWW	22	TI	62
STAY	20		

To be honest, Diamond was an experiment with Invasion. Her mother is a big red and white cow, and we wanted to see what Invasion could do. It turned out amazingly well. Diamond is a moderate framed, long bodied and clean fronted individual that is sure going to make a nice cow. Her Reymond calf should be something to see.

58 Triple C Lovely Lady T48R

Black Dbl. Polled PB Female ASA#2386109
 Tattoo: T48R BD: 3-17-07 Adj. BW: 87 Adj. WW: 609

WLE POWER STROKE
 KAPPES UNIQUE P27
 KAPPES ZITA M246
 ES DAKOTA NK68
 HSF JOSIE L28 R48
 HSF JOSIE 755G L28

Lovely Lady was purchased in dam at the MN State Sale from our good neighbors, the Heck-sels. She possesses a different pedigree for us that combines calving ease with growth and nice carcass values. She is a long profiling female that is moderate framed and sound.

EPDs	
CE	8
BW	0.2
WW	36
YW	65
MCE	1
MM	6
MWW	24
STAY	22
CW	1.1
YG	-.06
Marb	.19
BF	.00
REA	.22
API	115
TI	68

A.I. Sire: Triple C Singletary S3H
 A.I. Date: 5-22-08
 Est. Plan Mating EPDs: 11 -1.2 31 58 1 9 24 22
 CW -4.9 YG -.12 Marb .34 BF .01 REA .35 API 130 TI 71

59 Triple C Joliette T8307

Black Dbl. Polled PB Female ASA#2393728
 Tattoo: T8307 BD: 3-22-07 Adj. BW: 77 Adj. WW: 606

TMPF KEEP DREAMIN
 JBS RENOWN P552
 JBS K552
 HC POWER DRIVE 88H
 TRIPLE C JOLIETTE M8307
 NICHOLS JOLIETTE 154X

Joliette is a smaller designed female with a tremendous cow family behind her. The 154X cow is a full sister to 107W. By adding Power Drive and Renown to this family, it worked well. As an added Bonus, she sells bred to Singletary.

EPDs	
CE	6
BW	-0.7
WW	11
YW	27
MCE	4
MM	8
MWW	13
STAY	19
CW	-22.1
YG	-.01
Marb	.01
BF	.01
REA	-.21
API	90
TI	48

A.I. Sire: Triple C Singletary S3H
 A.I. Date: 5-21-08
 Est. Plan Mating EPDs: 10 -1.6 19 39 2 10 19 21
 CW -0.1 YG -.09 Marb .25 BF .01 REA .13 API 117 TI 61

60 Triple C Autumn To53

Black Dbl. Polled PB Female ASA#2386115 Tattoo: T053 BD: 3-27-07
 Adj. BW: 119 Adj. WW: 637

ELLINGSON BLACK PERFECTOR
 KS ENDZONE P165
 KSR DAWNS DESIRE 281L
 MEYERS BLACKTOP 206Y
 TRIPLE C AUTUMN
 TRIPLE C ANNA

A.I. Sire: Triple C Invasion R47K
 A.I. Date: 6-9-08
 Est. Plan Mating EPDs:
 6 4.6 38 69 2 5 24 18
 CW 10.3 YG -.01 Marb .22 BF .02
 REA .28 API 100 TI 65

If someone is looking for a bred that is more extended in her skeleton and design, then Autumn is for you. She is a long designed, big made heifer that is selling bred to the Select Sires bull, Invasion.

EPDs		Carcass	
CE	2	CW	20.1
BW	7.5	YG	.04
WW	46	Marb	.15
YW	79	BF	.00
MCE	2	REA	.12
MM	1	API	88
MWW	24	TI	63
STAY	18		



61 Triple C Tristan T79M

Black Dbl. Polled PB Female ASA#2393725
Tattoo: T79M BD: 3-27-07 Adj. BW: 80 Adj. WW: 676

HC POWER DRIVE 88H
TRIPLE C EL PODEROSO REY
JSF FIESTA
BDV NORTHWEST 34J
BDV TRISTAN M79
BDV OPAL E21

A.I. Sire: Triple C Invasion R47K
A.I. Date: 5-21-08

Est. Plan Mating EPDs: 10 0.6 33 63 3 4 21 18
CW 0.8 YG .04 Marb .30 BF .05 REA .26
API 115 TI 69

Tristan has been a favorite to many this summer, especially with the judging teams that have visited.

With her balance and style, she combines valuable traits better than most. She is moderate framed, big ribbed, super soft, wide based, big boned and yet attractive to the eye. She is out of a hard working Begger cow that produced a past high-selling bred heifer. If we could make them all like this Raymond daughter, life would be simple. As a bonus, she sells safe to Invasion.

EPDs		Carcass	
CE	8	CW	1.1
BW	-0.4	YG	.14
WW	36	Marb	.31
YW	66	BF	.08
MCE	4	REA	.06
MM	-1	API	119
MWW	17	TI	69
STAY	20		

62 Triple C Fancy T811

Black Dbl. Polled PB Female ASA#2419351
Tattoo: T811 BD: 3-25-07 Adj. BW: 77 ET Adj. WW: 603

CNS DREAM ON L186
SVF/NJC BUILT RIGHT N48
NJC EBONY ANTOINETTE
BH RIGHT TIME 520E
NAF PATTY P47
SF PEPPERMINT PATTY 385

A.I. Sire: Triple C El Poderoso Rey
A.I. Date: 6-10-08
Est. Plan Mating EPDs:
10 -0.1 42 77 5 3 24 20
CW 8.0 YG .08 Marb .20 BF .04 REA .16 API 119 TI 73

Fancy was purchased as a pregnancy from Lucas Cattle (MO).

Fancy's picture tells the story. She is very capacious in her middle and long, level hiped. Combining this with adequate muscle expression and really extended in her front, she will be a favorite for many on sale day.

EPDs		Carcass	
CE	7	CW	5.4
BW	1.1	YG	.09
WW	40	Marb	.18
YW	70	BF	.03
MCE	4	REA	-.01
MM	4	API	108
MWW	24	TI	69
STAY	19		



63 Triple C Maggie T806P

Black Dbl. Polled PB Female ASA#2393724
Tattoo: T806P BD: 4-2-07 Adj. BW: 91 Adj. WW: 759

ELLINGSON BLACK PERFECTOR
KS ENDZONE P165
KSR DAWNS DESIRE 281L
KENCO/MF POWERLINE 204L
BIF MISS P806
SHO MISS FANCY

A.I. Sire: Triple C Singletary S3H
A.I. Date: 5-21-08
Est. Plan Mating EPDs:
8 0.5 35 66 2 7 25 22
CW 2.5 YG -.06 Marb .36
BF .03 REA .42 API 125 TI 72

EPDs		Carcass	
CE	2	CW	15.8
BW	3.4	YG	.05
WW	44	Marb	.23
YW	81	BF	.04
MCE	3	REA	.36
MM	4	API	106
MWW	26	TI	67
STAY	20		

Maggie is one of the last End Zone heifers to sell. Maggie excels in performance both genetically and physically. She is a long bodied, long fronted heifer that is free moving. She sells bred to our exciting Josie son Singletary.

64 Triple C Shining Star T187

Black Baldy Dbl. Polled PB Female ASA#2393720
Tattoo: T187 BD: 4-12-07 Adj. BW: 76 Adj. WW: 712

HC POWER DRIVE 88H
TRIPLE C EL PODEROSO REY
JSF FIESTA
SIEGFRIED
TRIPLE C SIGGY M187
TRIPLE C SWEETHART B397

A.I. Sire: Triple C Invasion R47K
A.I. Date: 5-22-08
Est. Plan Mating EPDs:
9 0.3 34 66 3 6 23 18
CW 2.3 YG -.02 Marb .11
BF .03 REA .34 API 106 TI 65

EPDs		Carcass	
CE	8	CW	4.1
BW	-1.0	YG	.02
WW	38	Marb	-.07
YW	72	BF	.03
MCE	4	REA	.25
MM	3	API	102
MWW	22	TI	63
STAY	20		

Shining Star is a natural calf out of our Siegfried x Sweethart donor. In terms of structure and easy fleshing, this heifer is at the top of her game. She will make a fault free, low maintenance cow that everyone could use.



65 Triple C Missy T2137

Black Polled 1/2 SM 1/2 CS Female ASA#2393732
Tattoo: T2137 BD: 3-27-07
Adj. BW: 80 Adj. WW: 613

ELLINGSON BLACK PERFECTOR
KS ENDZONE P165
KSR DAWNS DESIRE 281L
2137 (COMMERCIAL SIMMENTAL)

A.I. Sire: Triple C El Poderoso Rey
A.I. Date: 5-22-08
Est. Plan Mating EPDs:
* -0.5 35 66 * 1 18 -
CW 1.0 YG .05 Marb .20 BF .04
REA .14 API 111 TI 67

Missy is a clean made, long spined youngster that always is attractive. Her dam is a heavy milking commercial black cow that does an excellent job bringing in a fat calf. Missy sells bred to our calving ease specialist Raymond.

EPDs		Carcass	
CE	*	CW	-8.6
BW	0.2	YG	.04
WW	27	Marb	.18
YW	48	BF	.02
MCE	*	REA	-.06
MM	0	API	95
MWW	13	TI	57
STAY	-		

66 Triple C Carrol T114

Black Dbl. Polled PB Female ASA#2393715
Tattoo: T114 BD: 4-16-07 Adj. BW: 83 Adj. WW: 691

HC POWER DRIVE 88H
TRIPLE C EL PODEROSO REY
JSF FIESTA
BHR DOORN G629E
BHR CARROLL N114E
LUCKY LADY 610

A.I. Sire: Triple C Invasion R47K
A.I. Date: 6-21-08
Est. Plan Mating EPDs:
8 1.4 33 62 3 4 20 16
CW 1.4 YG -.03 Marb .29 BF .03 REA .32 API 105 TI 67

EPDs		Carcass	
CE	4	CW	2.3
BW	1.1	YG	.00
WW	35	Marb	.29
YW	64	BF	.02
MCE	2	REA	.20
MM	-1	API	99
MWW	17	TI	66
STAY	14		

Check out the cow side of this pedigree. She is a cow Peter purchased from Buzzard Hollow Ranch (TX) for an outcross to possibly produce our next herd sire. As our luck goes, she's had all heifers. Carol is massive in terms of base width, true muscle dimension and real performance. These Raymond daughters selling bred to Invasion will simply work in the beef market place today.



67 Triple C Fancy T739

Black Dbl. Polled PB Female ASA#2393716
Tattoo: T739 BD: 4-19-07 Adj. BW: 82 Adj. WW: 795

HC POWER DRIVE 88H
TRIPLE C EL PODEROSO REY
JSF FIESTA
HART BACK FIRE J283
DIAMOND M MS FANCYFIRE
DIAMOND M MS PIXIE 739G

A.I. Sire: Triple C Invasion R47K
A.I. Date: 5-21-08
Est. Plan Mating EPDs:
9 0.8 39 72 4 6 25 18
CW 6.5 YG .01 Marb .37 BF .05 REA .40 API 120 TI 74

EPDs		Carcass	
CE	8	CW	12.5
BW	0.0	YG	.07
WW	48	Marb	.46
YW	85	BF	.06
MCE	6	REA	.37
MM	3	API	130
MWW	27	TI	80
STAY	19		

This Raymond daughter has been one of my favorites since birth. She not only excels phenotypically being very capacious, big middled and super sound. Genetically, she's more impressive. Study her numbers to get that much growth while maintaining a zero for birth weight and read very impressively on her carcass data is a true accomplishment. Fancy's calf will be more impressive being sired by Invasion.



68 Triple C Spice Girl T186K

Black Dbl. Polled PB Female ASA#2386108
Tattoo: T186K BD: 4-20-07 Adj. BW: 82 Adj. WW: 673

TMPF KEEP DREAMIN
JBS RENOWN P552
JBS K552
HC POWER DRIVE 88H
TRIPLE C POWER SPICE K18
TCF MISS GINGER

A.I. Sire: Triple C L. Taylor
A.I. Date: 5-23-08
Est. Plan Mating EPDs:
10 -1.0 26 48 3 7 20 23
CW -10.1 YG -.04 Marb .22 BF .03 REA .17
API 121 TI 64

EPDs		Carcass	
CE	6	CW	-9.2
BW	0.5	YG	.05
WW	26	Marb	.08
YW	46	BF	.02
MCE	4	REA	-.10
MM	3	API	106
MWW	16	TI	58
STAY	24		

Spice Girl is out of one of the most impressive Power Drive cows anywhere. She is sired by Renown our homozygous polled and black sire from Cody Johnson. This youngster was blessed with style and pizzazz. She sells bred to Taylor, our full brother to Bettis.



69 Triple C Honey T4072

Black Dbl. Polled PB Female ASA#2393713
Tattoo: T4072 BD: 5-4-07 Adj. BW: 71 Adj. WW: 638

WLE POWER STROKE
PVF-CW RAPID FIRE 0195K
KAPPES LADY IRISH F88
NICHOLS BLK DESTINY D12
LADY SARGE P4072
RCC/TCF REAL SWEET

A.I. Sire: Triple C Queen's Pride
A.I. Date: 5-23-08
Est. Plan Mating EPDs:
6 -1.1 21 37 0 4 14 22
CW -16.8 YG -.05 Marb .22
BF .00 REA -.07 API 111 TI 60

EPDs		Carcass	
CE	3	CW	-15.6
BW	-0.6	YG	-.07
WW	20	Marb	.08
YW	38	BF	-.01
MCE	0	REA	-.07
MM	0	API	101
MWW	11	TI	54
STAY	23		

Honey has phenotypically one of the best four year old cows on the farm as her dam. She milks hard and brings in a big calf every fall. Honey is smaller framed, easier fleshing individual, combining this with structure, muscle expression and the soft look. She'll be a favorite.



70 Triple C Brenda T0517

Black Dbl. Polled PB Female ASA#2393717
Tattoo: T0517 BD: 4-15-07
Adj. BW: 106 Adj. WW: 760

LUCAS WESTERN CUTTER 374
GFI GENERAL R049
3C KROCUS K049 B
TNT BRUZER K73
PVFS BRENDA 517M
PVF PRINCESS 0517K

A.I. Sire: Triple C El Poderoso Rey
A.I. Date: 5-29-08
Est. Plan Mating EPDs:
9 2.4 48 83 4 0 24 21
CW 14.9 YG -.01 Marb .10 BF .02
REA .34 API 110 TI 71

Brenda is a larger framed heifer that excels in performance and eye appeal. She possesses some of the highest growth values in the entire offering. She brings some outcross genetics to the sale and sells bred to Raymond, our high API bull.

EPDs		Carcass	
CE	5	CW	19.2
BW	6.0	YG	-.07
WW	52	Marb	-.02
YW	82	BF	-.02
MCE	-1	REA	.34
MM	-2	API	90
MWW	24	TI	62
STAY	20		



71 Triple C Shasha T37J

Black Dbl. Polled 1/2 SM 1/2 AN Female ASA#2393714
Tattoo: T37J BD: 5-4-07 Adj. BW: 81 Adj. WW: 707

HC POWER DRIVE 88H
TRIPLE C EL PODEROSO REY
JSF FIESTA
J37 COMM. ANGUS COW

A.I. Sire: Triple C Queens Pride A.I. Date: 7-6-08
Est. Plan Mating EPDs: * -1.5 26 47 * 6 19 -

Shasha could possibly be the best halfblood bred heifer to ever leave Triple C. Kyle Roseboom, University of Minnesota Judging Team Coach, told his kids Shasha is the definition of structural correctness. From her foot size to the proper slopes, she's one to learn by. Beyond her structure, she is massive middled, long skeltoned and very attractive. Her natural mother, the 37J cow, is a fault-free Sleep Easy daughter that combines a lot of good things. Shasha could be the most balanced heifer selling. She is not broke to lead, but she sure should be.

EPDs	
CE	*
BW	-1.4
WW	31
YW	58
MCE	*
MM	4
MWW	19
STAY	-



72 Triple C Cowgirl T47R

Black Dbl. Polled PB Female ASA#2393712
Tattoo: T47R BD: 5-10-07 Adj. BW: 77 Adj. WW: 684

WLE POWER STROKE
TCF POWER DRIVE R2412
KAPPES LADY IRISH F88
SS GOLDMINE L42
TRIPLE C GOLD GIRL R47N
CMSC JOKERS COWGIRL

A.I. Sire: Triple C Singletary S3H
A.I. Date: 7-27-08
Est. Plan Mating EPDs:
12 -1.7 23 46 2 9 20 23
CW -12.7 YG -.12 Marb .29
BF .01 REA .29 API 127 TI 65

Cowgirl is the youngest bred selling. She is a Power Drive

out of a first calf heifer that is out of a cow from our good friend Charlie Myerscough (IL). Cowgirl is free moving, well balanced and complete. She sells bred to Singletary, due around her birthday.

EPDs	
CE	10
BW	-0.8
WW	21
YW	40
MCE	3
MM	6
MWW	16
STAY	23
CW	-14.4
YG	-0.7
Marb	.09
BF	.01
REA	.10
API	110
TI	56

73 Rolf Vanity 436M

Black Dbl. Polled PB Female ASA#2164741
Tattoo: 436M BD: 2-19-02 Adj. BW: 83 Adj. WW: 612

LCHMAN LUCKY BUCK 7049C
GW LUCKY DICE 187H
407D
GW TAILOR MADE 515A
GW MISS TAILOR MADE 436D
GW MISS BINGO 1125A

Pasture Sire:
Triple C El Poderoso Rey
Pasture Dates: 5-6 to 7-21-08
Natural Service: 7-2-08
Est. Plan Mating EPDs:
10 0.1 40 76 5 2 22 19
CW 7.9 YG .03 Marb .14
BF .03 REA .22 API 112 TI 70

Another fault free, easy doing cow that is going to be missed around here. These cows have proven they can do it. The guess work is already gone. Yet again, she is a cow that is easy on the eye. She's deep made, long skeltoned and extra sweet fronted.

EPDs	
CE	7
BW	1.3
WW	35
YW	68
MCE	4
MM	2
MWW	20
STAY	16
CW	5.1
YG	.00
Marb	.06
BF	.01
REA	.11
API	93
TI	61



74 HPF Ms Lotus Logo

Black Dbl. Polled PB Female ASA#2096798
Tattoo: L050 BD: 3-17-01 Adj. BW: 86 ET

LRS PREFERRED STOCK 370C
RAINS LIMIT UP
RAINS BLACK BLACKIE 242B
MEYERS BLACK EQUALIZER
ER MBE9A 173C
ET MISS JB91X 9A

A.I. Sire: Triple C El Poderoso Rey
A.I. Date: 5-6-08
Est. Plan Mating EPDs: 12 -0.8 36 63 4 5 23 20
CW -1.3 YG .01 Marb .09 BF .02 REA .13
API 114 TI 67
Pasture Sire: Triple C El Poderoso Rey
Pasture Dates: 5-6 to 7-21-08

This Rains Limit Up cow goes back to the 9A family. She is perfect uddered and weaned one of the heaviest bulls this year. She sells A.I.d back to our calving ease and high API and TI senior herd sire, Raymond.

EPDs	
CE	11
BW	-0.4
WW	27
YW	43
MCE	3
MM	8
MWW	22
STAY	19
CW	-13.1
YG	-0.5
Marb	-0.3
BF	-0.01
REA	-0.7
API	98
TI	57

75 PVFS Dicey Girl H016M

Black Dbl. Polled PB Female ASA#2154356
Tattoo: H016M BD: 1-1-02 Adj. BW: 90 Adj. WW: 662

LCHMAN LUCKY BUCK 7049C
GW LUCKY DICE 187H
407D
G&L BLACKFOOT 716D
BDV MELISSA H16
BLACK FRAN

Dicey Girl is a younger cow with the rest of her life ahead of her. She defines structural correctness. Dicey Girl is faultless in her makeup. She is long bodied and nice uddered. Her Raymond baby should be something to see.

A.I. Sire: Triple C El Poderoso Rey A.I. Date: 5-15-08
Est. Plan Mating EPDs: 10 0.4 40 78 6 3 23 21
CW 9.9 YG .06 Marb .21 BF .04 REA .26 API 119 TI 72

Pasture Sire: Triple C El Poderoso Rey Pasture Dates: 5-6 to 7-21-08

EPDs	
CE	7
BW	2.0
WW	37
YW	73
MCE	6
MM	4
MWW	23
STAY	20
CW	9.2
YG	.06
Marb	.21
BF	.03
REA	.18
API	109
TI	65

76 BDV Donna L47

Black Dbl. Polled PB Female ASA#2123275
Tattoo: L47 BD: 3-6-01 Adj. BW: 81 Adj. WW: 578

3C WALLY C240 BLK
LEACHMAN HAIRPIN 7306H
LSF WHISPER D49
G&L BLACK LABEL 148F
BDV OLIVIA H41
BDV EMILY E34

Another Begger bred cow that is extra long bodied and sound footed, she milks hard and rebreeds early. Her calf this year is our heaviest red bull, so we bred her back the same way to Majic Man.

A.I. Sire: Triple C Majic Man M211 A.I. Date: 3-26-08
Est. Plan Mating EPDs: 4 0.9 34 59 5 5 22 22
CW -1.4 YG -.13 Marb -.02 BF -.01 REA .33 API 97 TI 60

EPDs	
CE	5
BW	0.9
WW	30
YW	46
MCE	2
MM	-5
MWW	10
STAY	24
CW	-9.3
YG	-1.3
Marb	-0.4
BF	-0.1
REA	.20
API	98
TI	54

77 BS Miss Hank 44L

Black Dbl. Polled PB Female ASA#2114199 Tattoo: 44L BD: 3-19-01

BOZ REDCOAT
HSF HANK 1H
HSF VANESSA 45D
PTL MILK DOCTOR
HAAS RANCH F44
HAAS RANCH A21

Adj. BW: 92 Adj. WW: 467
A.I. Sire: Triple C Invasion R47K
A.I. Date: 3-26-08
Est. Plan Mating EPDs:
8 2.0 23 46 4 10 22 17
CW -6.9 YG -.03 Marb .20 BF .03
REA .20 API 99 TI 59

Daughter Sells as Lot 25! There are not many Hank daughters that we have seen, but this one is tremendous. She milks hard, rebreeds early and most importantly, brings in a heavy calf.

EPDs		Carcass	
CE	6	CW	-14.2
BW	2.3	YG	.00
WW	17	Marb	.11
YW	33	BF	.02
MCE	5	REA	-0.4
MM	12	API	86
MWW	20	TI	50
STAY	17		

78 Triple C Sadie Lozo

Black Horned PB Female ASA#2117164
Tattoo: L030 BD: 3-4-01 Adj. BW: 82 Adj. WW: 783

EPDs		Carcass	
CE	4	CW	18.2
BW	-0.1	YG	-.03
WW	46	Marb	.08
YW	93	BF	.02
MCE	3	REA	.48
MM	8	API	113
MWW	31	TI	71
STAY	22		

WLE POWER STROKE
HC POWER DRIVE 88H
KAPPES LADY IRISH F88
LRS BIG COUNTRY 37E
JDJ SUSANS SABLE 030J
SSS-SCF BLK EYED SUSAN 001G

A.I. Sire: GW Lucky Man 110T
A.I. Date: 4-28-08
Est. Plan Mating EPDs: 6 -0.3 42 81 4 8 29 -
CW 10.4 YG -.06 Marb .27 BF .02 REA .41
API 119 TI 74
Pasture Sire: Triple C Invasion R47K
Pasture Dates: 5-6 to 7-21-08



Lot 78

Daughter Sells as Lot 28!

Sadie is the natural mother to the Freightliner bull that Earnie Ambler bought last year from our pen of three at Denver. Sadie is a powerful cow from any angle. She is a wide based, high volume cow that is a rib longer than most. She is sound footed and nice uddered. These Power Drive daughters have a lot of longevity, and Sadie is no exception. She sells bred to GW Lucky Man 110T (Double Your Luck), Gateway's 2008 high-selling bull owned by our good friends at Wildberry Farms.

79 Kappes H. Arapahoe L81

Black Dbl. Polled PB Female ASA#2137560
Tattoo: L81 BD: 3-13-01 Adj. BW: 98 Adj. WW: 564

EPDs		Carcass	
CE	5	CW	-13.6
BW	1.0	YG	.02
WW	27	Marb	-.09
YW	38	BF	.00
MCE	2	REA	-.24
MM	2	API	81
MWW	16	TI	51
STAY	18		

BS MR ARAPAHOE 811A
HART ARAPAHOE G913
MISS T BIRD CHV286W
SV RED CHARLIE
KAPPES RED CHARLIE E167
MISS RP SUSIE U31

Pasture Sire: Triple C El Poderoso Rey
Pasture Dates: 5-6 to 7-21-08
Natural Service: 6-1-08
Est. Plan Mating EPDs: 9 -0.1 35 61 4 2 20 20
CW -1.5 YG .04 Marb .06 BF .03 REA .05 API 105 TI 65

This Arapahoe bred Kappes cow is phenotypically flawless. She is massive hiped, big topped and extra long and clean fronted. L81 is one of those cows you could mate a lot of different ways and still work. Last year, her bull was a high-seller

going to Arkansas, and this year she's bred back the same way.



Lot 79

80 Queen Power L69

Black Dbl. Polled PB Female ASA#2111563

Tattoo: L69 BD: 2-24-01
Adj. BW: 92 ET Adj. WW: 505

EPDs		Carcass	
CE	4	CW	-12.9
BW	0.2	YG	-.06
WW	19	Marb	.08
YW	40	BF	.00
MCE	4	REA	.01
MM	-2	API	95
MWW	7	TI	52
STAY	20		

WLE POWER STROKE
HC POWER DRIVE 88H
KAPPES LADY IRISH F88
MEYERS BLACKTOP 206Y
TRIPLE C QUEEN OF THE ROAD
HART HOLLYWOOD QUEEN E700

A.I. Sire: Wheatland Bull 131L A.I. Date: 4-24-08
Est. Plan Mating EPDs: 6 0.5 33 57 3 -4 13 21
CW -2.8 YG -.01 Marb .01 BF .00 REA -.05 API 99 TI 60
Pasture Sire: Triple C Invasion R47K Pasture Dates: 5-6 to 7-21-08

This young Power Drive cow really puts a lot of good into a clean, attractive package. She is well balanced and carries muscle dimension, base width, natural volume and capacity with on a moderate frame with flawless structure. These "L" model Power Drive cows have many years of production left. This one sells bred early to Wheatland Bull 131L.



Lot 80

Daughter Sells as Lot 42!

81 Triple C Bring It On Bab

Black Dbl. Polled PB Female ASA#2117176
Tattoo: L112 BD: 2-2-01 Adj. BW: 90 Adj. WW: 595

EPDs	
CE	5
BW	2.1
WW	23
YW	48
MCE	2
MM	3
MWW	14
STAY	24
CW	-5.6
YG	-.07
Marb	-.04
BF	.01
REA	.24
API	99
TI	52

WLE POWER STROKE
HC POWER DRIVE 88H
KAPPES LADY IRISH F88
TC PREMINITION
TECC GALE 112G
PTL MISS JETLINER S404

Pasture Sire: Triple C Invasion R47K
Pasture Dates: 5-6 to 7-21-08
Natural Service: 6-18-08
Est. Plan Mating EPDs: 8 1.9 26 53 2 6 19 20
CW -2.6 YG -.07 Marb .16 BF .02 REA .34
API 105 TI 59

Bring It On Bab is a cow I will regret selling. She is super soft, super sound, super thick, super nice fronted, super easy fleshing and has a super udder. She didn't like the picture pen and that's really a shame. Cows that are this low maintenance will last forever. Be sure and find her sale day, she will impress you. She sells bred to Invasion naturally for a March calf.

Daughter Sells as Lot 46!

82 Diamond M Miss Adora L426A

Black Dbl. Polled PB Female ASA#2118197
Tattoo: L426A BD: 2-5-01 Adj. BW: 80 ET Adj. WW: 689

EPDs	
CE	7
BW	-0.2
WW	15
YW	15
MCE	0
MM	-1
MWW	6
STAY	21
CW	-29.5
YG	-.11
Marb	-.10
BF	.01
REA	.04
API	85
TI	45

NLC 64Y TOMCAT
JF NEW DIMENSION 903J
NICHOLS KELLY 75U
BS MR ARAPAHOE 811A
MISS BLACK JUNO 3824
NICHOLS MISS 31Y

A.I. Sire: Triple C Power Plus N23L
A.I. Date: 4-24-08
Est. Plan Mating EPDs: 4 1.0 30 48 2 1 16 20
CW -7.9 YG -.02 Marb .06 BF .03 REA .16 API 95 TI 58
Pasture Sire: Triple C El Poderoso Rey Pasture Dates: 5-6 to 7-21-08

Adora was the natural mother to Koty Beth's steer that won the AJSA Nationals in Louisiana. If you want a cow that will add muscle and downsize your calves without giving up performance, Adora will do it.

83 RCC/TCF How Sweet L115

Black Dbl. Polled PB Female ASA# 2107963 Tattoo: L115 BD: 2-20-01
Adj. BW: 115 ET Adj. WW: 684

EPDs		Carcass	
CE	6	CW	14.8
BW	3.3	YG	.13
WW	46	Marb	.18
YW	80	BF	.02
MCE	4	REA	-.08
MM	-1	API	101
MWW	23	TI	67
STAY	17		

LRS PREFERRED STOCK 370C
ELLINGSON BLACK PERFECTOR
ELLINGSON BLACKTOP F672
BOZ REDCOAT
BOZ SWEET TEMPTATION
WBR MISS JUNIOR 2Z

Pasture Sire: GFI General R049
Pasture Dates: 7-1 to 7-21-08
Natural Service: 7-15-08
Est. Plan Mating EPDs: 7 4.1 49 80 3 -2 22 17
CW 15.3 YG .07 Marb .05 BF .02 REA .07 API 94 TI 67

Our Black Perfection x Sweet Temptation daughters make awesome cows. She will not win any beauty contest; but in terms of bringing in a valuable calf at weaning, How Sweet does it every year.



84 STF Beyond A Doubt L611

Black Dbl. Polled PB Female ASA#2117477
Tattoo: L611 BD: 1-21-01 Adj. BW: 77 ET Adj. WW: 650

MV RED LIGHT 406
GW BRIGHT LIGHT 019H
GW MISS MATERNAL 636F
RAINS LIMIT UP
LCHMAN BLK BALDY J700
LCHMAN BWF BALDY G7010

Pasture Sire: Triple C Power Drive R2412
Pasture Dates: 5-16 to 7-21-08
Natural Service: 6-8-08
Est. Plan Mating EPDs:
9 -1.0 22 45 3 4 15 21
CW -12.1 YG -.03 Marb .06
BF .02 REA .06 API 104 TI 57

EPDs	
CE	10
BW	-2.7
WW	19
YW	27
MCE	-2
MM	2
MWW	11
STAY	18
CW	-25.5
YG	.03
Marb	.07
BF	.01
REA	-.30
API	99
TI	55

Beyond A Doubt is one of the softest made, biggest volumed cows anywhere. She was purchased from Scott and Della Eastep (IN) and has been a good addition to our herd. She milks extra hard while maintaining body condition better than most. She sells bred to our Power Drive clone R2412.

85 PVF Red Delight 113L

Red Dbl. Polled PB Female ASA#2111342
Tattoo: 113L BD: 1-27-01 Adj. BW: 89 Adj. WW: 611

GW-CPL RED ALERT
MV RED LIGHT 406
LEACHMAN RED BALDY Z279
ER BROADSTRIKE 531C
GLS VIDALIA F13
HOOKS VALIANT 147C

A.I. Sire:
Triple C El Poderoso Rey
A.I. Date: 5-14-08
Est. Plan Mating EPDs: 10 0.5 34 65 4 3 20 19
CW 1.8 YG .08 Marb .22 BF .03 REA .02 API 113 TI 68
Pasture Sire: Triple C Ultimate Force
Pasture Dates: 5-16 to 7-21-08

EPDs	Carcass
CE	7
BW	2.1
WW	23
YW	45
MCE	2
MM	5
MWW	17
STAY	16
CW	-7.1
YG	.09
Marb	.22
BF	.01
REA	-.29
API	96
TI	56



We had the misfortune of losing Red Delight's Reymond calf in the corn stalks this past winter. It wasn't her fault that she wasn't put in a barn. She is one of our favorite red cows ever. Just look at her picture, and you too will like her. Easy fleshing, fault free, soft in her design and nice structured best describe this should-be donor. Her Reymond calf will be something special.



86 Triple C Sweet Dreams K23

Black Dbl. Polled PB Female ASA#2071454
Tattoo: K23 BD: 1-7-00 Adj. BW: 89 ET Adj. WW: 665

RED PEPPER
TC PREMINITION
LL&L BLACK BEAUTY
MEYER RANCH MR 745
TRIPLE C SWEETHART B397
MISS T BIRD CH U020

Pasture Sire: Triple C Power Drive R2412
Pasture Dates: 5-16 to 7-21-08
Natural Service: 6-5-08
Est. Plan Mating EPDs: 6 1.3 29 60 4 0 15 23
CW 0.6 YG -.02 Marb .03 BF .01 REA .09 API 102 TI 57

EPDs	Carcass
CE	4
BW	1.8
WW	33
YW	58
MCE	-1
MM	-5
MWW	11
STAY	22
CW	-0.2
YG	.05
Marb	.01
BF	-.01
REA	-.24
API	96
TI	56

This Preminition x Sweethart cow has a picture perfect profile. These cows are hard to part with as they are predictable and low maintenance. She sells bred by natural service to our Drive R2412.

87 Hooks Kimmi 106K

Black Dbl. Polled PB Female ASA#2068507
Tattoo: 106K BD: 3-15-00 Adj. BW: 86 Adj. WW: 598

CIRCLE S LEACHMAN 600U
NICHOLS BLK DESTINY D12
NICHOLS KELLY 75U
BS BRODERICK 811X
NLC A62 ALMA
NLC R73

Kimmi is a Hook bred cow that has done a nice job for us. She is extremely sound and agile. She sells bred back to Power Drive R2411. Vet says too close to call between A.I. date and observed heat.

EPDs	Carcass
CE	6
BW	1.0
WW	29
YW	46
MCE	-1
MM	-5
MWW	10
STAY	21
CW	-9.2
YG	.17
Marb	.14
BF	.09
REA	.08
API	102
TI	57

A.I. Sire: Triple C Power Drive R2411 A.I. Date: 4-24-08
Est. Plan Mating EPDs: 7 0.9 27 54 3 1 14 23 CW -3.9 YG .05 Marb .10 BF .06 REA .25 API 106 TI 58
Pasture Sire: Triple C El Poderoso Rey Pasture Dates: 5-6 to 7-21-08 Observed Heat: 5-12-08



88 PVF Crossfire 1512L

Black Dbl. Polled PB Female ASA#2111359 Tattoo: 1512L BD: 1-18-01

BS MR ARAPAHOE 811A
PTL CUTTING EDGE D209
NLC B75 BABY
4E TOP PRIORITY
4E OPRAH
BIG SANDY RANCH R821

Adj. BW: 87 ET Adj. WW: 700
A.I. Sire: Triple C Invasion R47K
A.I. Date: 4-23-08
Est. Plan Mating EPDs: 7 1.7 26 44 4 1 14 20
CW -9.2 YG -.10 Marb .17 BF .02 REA .30 API 103 TI 58
Pasture Sire: Triple C El Poderoso Rey
Pasture Dates: 5-6 to 7-21-08

Crossfire goes back to some of the best genetics in the country. She will simply lay down, calve quickly, mother it, raise it, wean it heavy and calve again next year at the same time. What more could you ask of a cow?

EPDs	Carcass
CE	4
BW	1.8
WW	23
YW	28
MCE	-4
MM	-7
MWW	4
STAY	24
CW	-18.7
YG	-.13
Marb	.05
BF	.00
REA	.17
API	96
TI	50



89 PVF Lady Liberty 181L

Black Dbl. Polled PB Female ASA#2111372
Tattoo: 181L BD: 1-24-01 Adj. BW: 88 Adj. WW: 666

EMMONS BLACK HERCULES
3C FULL FIGURES C288 BLK
3C DANMARKA 0922 BLKZ
CIRCLE S LEACHMAN 600U
BDV ARLENE E81
GW MISS BINGO 351C

Lady Liberty has produced a heifer that would make our sale every year that we've owned her. That's what it is all about - producing cattle that are better than average for an added bonus at sale time. She sells bred back to Raymond.

EPDs	
CE	10
BW	1.0
WW	31
YW	54
MCE	3
MM	3
MWW	19
STAY	20
CW	-3.7
YG	.06
Marb	.21
BF	.02
REA	-.08
API	112
TI	63

Pasture Sire: Triple C El Poderoso Rey
Pasture Dates: 5-6 to 7-21-08
Natural Service: 6-2-08
Est. Plan Mating EPDs: 12 -0.1 38 69 5 2 21 21
CW 3.5 YG .06 Marb .21 BF .04 REA .13 API 121 TI 71

Daughters Sell
as Lots 29 & 31!

www.triplecfarms.com

MILLENNIUM XI



90 Triple C Hot Rod K205H

Black Dbl. Polled PB Female ASA#2142738
Tattoo: K205H BD: 11-12-00 Adj. BW: 96 ET Adj. WW: 547

YARDLEY WHIRLAWAY X219
CCR CADILLAC
CCR BLACK CAT
DSR BLACK POWDER Z-13
RCC BLACK WIDOW D-72
RCC MISS ATHENA

Hot Rod has some older Triple C genetics, but there is a reason she's still here. She rebreeds early and maintains body condition well. She sells bred by natural service to R2411.

Pasture Sire: Triple C Power Drive R2411 Pasture Dates: 6-24 to 7-21-08
Natural Service: 7-9-08 Est. Plan Mating EPDs: 6 0.7 24 47 2 1 13 18
CW -8.5 YG -.08 Marb .07 BF .01 REA .21 API 94 TI 56

EPDs	
CE	5
BW	0.6
WW	23
YW	32
MCE	-4
MM	-4
MWW	7
STAY	13
CW	-18.3
YG	-.07
Marb	.08
BF	.00
REA	.00
API	79
TI	53



91 PVF Black Princess 9517J

Black Dbl. Polled PB Female ASA#2024279 Tattoo: 9517J BD: 2-15-99 Adj. BW: 90 Adj. WW: 623

BLACK MICK
G&L BLACKFOOT 716D
ER MISS MAX40 51B
BLACK IRISH KANSAS
LRS MS BLACK IRISH 517E
LRS MISS 600U 306C

Pasture Sire: Triple C El Poderoso Rey
Pasture Dates: 5-6 to 7-21-08
Natural Service: 6-2-08
Est. Plan Mating EPDs:
9 0.1 33 64 6 2 19 22
CW 0.9 YG .04 Marb .15 BF .04
REA .16 API 114 TI 66

This Blackfoot cow is long about her design and clean in her makeup. Without question, this is the best set of mature cows ever offered at Triple C. Black Princess fits right in.

EPDs		Carcass	
CE	5	CW	-8.8
BW	1.3	YG	.02
WW	23	Marb	.09
YW	45	BF	.02
MCE	6	REA	-.02
MM	3	API	98
MWW	14	TI	53
STAY	22		

TRIPLE C FARMS MILLENNIUM XI HERD REFERENCE SIREs



TCF Power Drive R2411

ASA#2326708 **Blk Dbl. Polled PB Bull**
WLE Power Stroke x Kappes Lady Irish F88
EPDs: 7 0.8 25 62 8 6 18 24
Carcass: CW 1.4 YG -.08 Marb .05
BF .02 REA .42 API 109 TI 57



HC Power Drive 88H

ASA#1991647 **Blk Dbl. Polled PB Bull**
WLE Power Stroke x Kappes Lady Irish F88
EPDs: 7 0.8 25 62 8 6 18 24
Carcass: CW 1.4 YG -.08 Marb .05
BF .02 REA .42 API 109 TI 57



TCF Power Drive R2412

ASA#2326709 **Blk Dbl. Polled PB Bull**
WLE Power Stroke x Kappes Lady Irish F88
EPDs: 7 0.8 25 62 8 6 18 24
Carcass: CW 1.4 YG -.08 Marb .05
BF .02 REA .42 API 109 TI 57



Triple C El Poderoso Rey

ASA#2117256 **Blk Dbl. Polled PB Bull**
HC Power Drive 88H x JSF Fiesta
EPDs: 13 -1.2 44 84 6 2 24 21
Carcass: CW 10.6 YG .06 Marb .21
BF .05 REA .33 API 129 TI 74



Triple C L. Taylor SoqE

ASA#2341606 **Blk Dbl. Polled PB Bull**
Hooks Shear Force x Lucas Josie 19K
EPDs: 14 -2.5 26 51 1 11 24 23
Carcass: CW -10.9 YG -.12 Marb .35
BF .03 REA .44 API 136 TI 70



Triple C Invasion R47K

ASA#2287392 **Blk Dbl. Polled PB Bull**
SRS J914 Preferred Beef x Hooks Karrie 47K
EPDs: 11 1.6 30 59 3 9 24 17
Carcass: CW 0.4 YG -.06 Marb .28
BF .03 REA .43 API 110 TI 65



Wheatland Bull 131L

ASA#2289072 **Blk Polled PB Bull**
Nichols Blk Destiny D12 x Wheatland Lady 908J
EPDs: 7 0.7 47 75 2 -5 19 22
Carcass: CW 7.3 YG .05 Marb -.06
BF .00 REA -.11 API 103 TI 64



Triple C Singletary S3H

ASA#2341645 **Blk Dbl. Polled PB Bull**
Hooks Shear Force x Lucas Josie 19K
EPDs: 14 -2.5 26 51 1 11 24 23
Carcass: CW -10.9 YG -.17 Marb .48
BF .01 REA .47 API 144 TI 74

TRIPLE C FARMS MILLENNIUM XI

Saturday, October 4, 2008
12 Noon Sharp!
At the Farm • Emerald, Wisconsin



Selling 97 Lots of Elite Triple C Genetics...Donors, Bred Females, Fancy Show Heifers and Embryos!

Eberspacher
ENTERPRISES INC.

2904 County Road 6
Marshall, MN 56258

First Class
U.S. Postage
PAID
Permit #86
Marshall, MN

FIRST CLASS MAIL: TIME DATED MATERIAL!

TO:

PLEASE BRING THIS CATALOG AND YOUR ASA # WITH YOU TO THE SALE!