

HART SIMMENTALS *Power Bull Sale*

PROUDLY HOSTING OUR 44TH ANNUAL SALE!

**ALL BULLS SELLING WERE BRED, BORN AND
DEVELOPED HERE ON THE RANCH!**



**Thursday, February 7, 2019
12:00 Noon Sharp!**

**Sale will be held at the farm 2 miles
south of Frederick, SD**

44th Annual Hart Simmentals Power Bull Sale!

WELCOME FROM THE WHOLE GANG HERE AT HART SIMMENTALS – YOUR PREMIERE BREEDER OF THE LARGEST SELECTION OF PUREBRED AND HOMO POLLED SIMMENTAL BULLS!



We reach the end of what is sure to be the strangest and most frustrating year for weather extremes. It started like most winters do, with semi-normal snowstorms which quickly turned into the winter that never ended and by all accounts never did straighten out. Almost every part of the northern United States and Canada were caught between late Spring snowstorms, the coldest spring temperatures we have ever seen and our first ever snow in early October that blanketed thousands of acres of unharvested crops. But as farmers and ranchers go, we are a stubbornly resilient, determined race of people that when faced with adversity, we dig deep to find that can do spirit and persevere!

The cattle market has been on a rising trend, gaining momentum and showing that those heavyweight Simmental calves that are punching the scales down are definitely fetching those top premium prices. We have been perfecting our building of our Purebred cowherd with a few main goals in mind. First off, keep producing the kind of individuals that have more frame to support the added extension and depth which allows our animals to bring more mass and structure to the table. Secondly to be extra attentive to the disposition level of our females and to the herd sires we select to pair our females with maintaining the highest degree of docility. And lastly, and one that has taken over thirty years to accomplish, being able to offer our consumers a majority of Homo Polled Individuals. With the exception of 2 bulls, our whole offering this year is verified by the American Simmental Association to be Homo Polled! Last year's bull sale group had 9 bulls that were Hetro Polled, by next year's sale we hope to be 100% Homo Polled.

Our all video bull sale has proven to be an expert tool and huge asset accepted by our patrons due to its high degree of flexibility in allowing you the buyer to view, analyze, and bid all from the comfort of your cozy chair. We realize that with unpredictable and crazy weather conditions, it is not always a choice to hop in the vehicle and make a trip to South Dakota. But remember we are always here and love the chance to visit with old and new friends and chat about great cattle. So if you are ever in the area, stop in for a cup of coffee or hot chocolate, the light is always on and the door is always open!

Sincerely,

**The Hart Family: Kerry & Mara
Justin, Jes, Braelyn, Zoie & Jaxon
Travis & Shelby
Jamie & Joe Locken**



Scan this code into your smart phone to view catalog online

OR type in this link:
<http://edjesales.com/eberspacher/hart/index.html>

Sale Terms & Conditions:

- 1) All cattle will sell under the terms and conditions adopted by the American Simmental Association.
- 2) We guarantee our cattle to be breeders but reserve the right to test any animal that may be returned to us as a non-breeder for one hundred eighty (180) days before making an adjustment. Cattle will be returned at the buyer's expense, and if declared a sound breeder by a competent veterinarian the cattle will be returned to the buyer's ranch at the buyer's expense. In case an adjustment is required, we will provide you with a satisfactory replacement (if available) or issue you a credit equal to the bull's purchase price minus the salvage value of \$1,000.
- 3) Any death or injury after the animal is sold is at the buyer's risk.
- 4) Anyone attending this sale attends at their own risk. The Hart's or any of the sale force will not be held responsible for any personal injury while attending this sale.

This sale will be broadcast live on the internet!

DVAuction
Broadcasting Real-Time Auctions

Justin Dikoff 605-290-0635

WELCOME ALL!

HART SIMMENTALS
Power Bull Sale

THURSDAY, FEBRUARY 7

44th Annual

HART SIMMENTALS Power Bull Sale

Please join us! ★ Thursday, February 7, 2019 at 12:00 Noon Sharp!

Sale will be held at the farm 2 miles south of Frederick, SD

VIDEO SALE ONLY - bulls will be penned for viewing at the farm prior to and on sale day!

ONE OF THE COUNTRY'S LARGEST SELECTIONS OF PUREBRED BULLS! 96% OF OFFERING IS HOMOZYGOUS POLLED!

Selling 92 PB SM Herd Bull Prospects

Complete performance data & 50K testing on all bulls offered in the 2019 sale.

Sale Day Phones:

Kerry 605-252-2065 • Val 612-805-7405

Justin 605-216-6469 • Travis 605-252-0894

SCHEDULE:

Wednesday, February 6th Viewing of Sale Cattle at the Farm
Farm address: 10904 387th Avenue, Frederick, SD 57441

Thursday, February 7th
8:00 a.m. Viewing of Cattle
11:00 a.m. Complimentary Lunch
12:00 Noon. 44th Annual Hart Simmentals Power Bull Sale

AIR TRANSPORTATION: Delta Airlines serves Aberdeen from all directions. Please contact Hart Simmentals prior to sale day for assistance with transportation.

AREA MOTELS: Aberdeen, S.D. has several excellent motels
Ramkota Inn, Sale Headquarters 605-229-4040
Hampton Inn, Aberdeen SD 605-262-2600
Holiday Inn Express & Suites 605-725-4000
Super 8 North. 605-226-2288

LIVESTOCK PRESS REPRESENTATIVES & MARKETING REPRESENTATIVES:
Val Eberspacher, EE Sales 612-805-7405
Donnie Leddy, Cattle Business Weekly 605-695-0113
Chris Effling, Tri-State Livestock 605-769-0142
Colton Buus, ASA Field Representative 605-214-3532
Alex Achenson, TriState Neighbor 785-366-1185

AUCTIONEER:
Col. Jared Shipman 806-983-7226

FREE DELIVERY ANYWHERE ON ALL BULLS PURCHASED OVER \$5,000!

Delivery starting February 20th. Or, we can keep the bulls until April 30 and the buyer will be responsible for pick up. \$50 off per head if you haul your bull sale day.

★ **HART SIMMENTALS** ★

Kerry, Mara, Justin, Jes, Travis, Shelby, Jamie & Joe
4hooves@nvc.net Phone 605-329-2587
Kerry 605-252-2065 • Justin 605-216-6469
Travis 605-252-0894

General Information

Health: We at Hart Simmental have a complete herd health program which is managed by Dr. Tim Kruse and the Wetonka Vet Clinic. All bulls will be accompanied by health papers for shipment anywhere in the United States. They have been vaccinated for Rednose, P13, BVD, 7-way clostridial, Blackleg, BRVS, Haemophilus, and have had their booster shot at weaning. They have also been dewormed with Safeguard and poured with Ivomec. Dams of all bulls have been tested Johne's free.

Genetic Defects: All bulls selling are Arthrogyposis Multiplex (AM) Free, Neuropathic Hydrocephalus (NH) Free, and Contractural Arachnodactyly (CA) Free.

Delivery: FREE DELIVERY anywhere on bulls purchased over \$5,000. We will start delivery February 20 or we can keep the bulls until April 30. Any bull left here until April 30 must be picked up by the purchaser by that date. No exceptions. \$50 off per head if you haul your bull sale day.

Performance Information: All performance information will be posted on sale day for your inspection. Yearling Weights and Weight Per Day of Age will be available on all bulls selling sale day, and will be posted on the internet sale site as soon as complete.

Volume Discount: There will be a volume discount given if you purchase 3 bulls, the discount will be 3%. 4 bulls will have a 4% discount and 5 or more bulls will be a 5% discount.

Livestock Insurance: Insurance will be available sale day through Martin-Trudeau Insurance who offers loss of use and mortality. In no case will seller be responsible for more than the purchase price of the bull and details will be available through the agents on sale day. *If you intend on leaving your bulls at the ranch we highly recommend you insure your bull or bulls to better protect your investment.*

EPDs: Please note the EPDs may change from the time the sale catalog is printed until registration paper is transferred. Simmental EPDs are BOLT 12-25-18 numbers. *All bulls have been tested for Genomic Enhanced EPDs.*

Announcements: Announcements made sale day and from the auction block during the sale take precedence over printed material in the catalog or other printed material associated with this sale.

Sale Managed by: Val & Lori Eberspacher
Office 507-532-6694
Cell 612-805-7405
sales@egersale.com

Eberspacher
ENTERPRISES INC.

Catalog Online at
www.egersale.com

Herd Sires at Hart Simmentals

BBS True Justice B10

Homo. Black Homo. Polled Purebred ASA#2878160 Tattoo: B10
Birth: 2-23-14

BDV True Grit 11X x BBS Miss Justice Z7

EPDs																
CE	BW	WW	YW	ADG	MCE	MM	MWW	STAY	DOC	CWT	YG	MARB	BF	REA	API	TI
13	.3	79	126	.30	9	35	75	18	12.5	19.1	-.59	.09	-.121	1.01	142	81

We purchased this high selling standout bull from the 2015 Bata Bros Simmental Sale and after evaluating evaluating his calves for the last three years, he has become the #1 most used calving ease sire in the lineup at Genex Cooperative. He offers mating flexibility, unmatched calving ease numbers, a powerful build and eye appealing phenotype. He has proven to be a high impact herd sire on many attributes and is equipped with all the necessary tools to get the job done right. Semen available at Genex.

WCS El Dorado 5209C

Homo. Black Dbl. Polled Purebred ASA#3000561 Tattoo: 5209C
Birth: 2-4-15

LRS Turning Point 3117A x KS Sierra R992

EPDs																
CE	BW	WW	YW	ADG	MCE	MM	MWW	STAY	DOC	CWT	YG	MARB	BF	REA	API	TI
7	3.4	84	133	.30	5	23	65	18	14.1	46.8	-.50	-.16	-.119	1.10	117	72

El Dorado came to us as the lead off bull from the 2016 Reserve Grand Champion Pen Of 5 at the Denver Stock Show. He is a LRS Turning Point 3117A son that turned up the level of fleshing ability, added width, density and has that no holes genetic profile that meshed extremely well with our program. Semen available at Hart Simmentals.

DKSR Hollow Point C66

Homo. Black Homo. Polled Purebred ASA#3027384 Tattoo: C66
Birth: 3-14-15

TNT Outlaw A316 x KS Zahara Z710

EPDs																
CE	BW	WW	YW	ADG	MCE	MM	MWW	STAY	DOC	CWT	YG	MARB	BF	REA	API	TI
11	2.3	80	131	.31	3	23	63	16	12.3	33.5	-.37	.07	-.105	.64	130	77

Hollow Point was acquired from the 2016 Kunkel Simmental Bull Sale for his extra smooth muscle design, extreme fleshing ability, outcross pedigree, and the ability to compliment our cow power. What he has accomplished is the perfect blend of huge growth, flawless muscle design, and incredible performance which equals a true multi-dimensional herd sire. Semen available at Hart Simmentals.

Hart State Of War 056C

Black Homo. Polled Purebred ASA#2975543 Tattoo: 056C
Birth: 2-21-15

Welsh's Warsaw 312Z x Hart Miss 102A

EPDs																
CE	BW	WW	YW	ADG	MCE	MM	MWW	STAY	DOC	CWT	YG	MARB	BF	REA	API	TI
17	.4	86	122	.22	10	14	57	23	12.7	34.0	-.40	-.13	-.102	.76	143	77

Hart State Of War 056C was purchased by McMillen Ranching LTD & Semex of Canada in our 2016 bull sale. He is a Welsh's Warsaw 312Z son out of a Skors Black Enticer 287Y daughter that is a Homo Black and Homo Polled calving ease sure fire hit. He is known for his nicely balanced EPD profile that excels in low CE and low BW and is siring really deep sided, evenly balanced progeny that are starting to pop up at major shows in Canada and the United States. Semen available at Semex.



Herd Sires at Hart Simmentals

HSR Power Plus D206

Black Dbl. Polled 3/4 SM 1/4 AN ASA#3201850 Tattoo: D206

Birth: 3-20-16

TJ Power Grid 363Y x HSR Ms. Rookie Z751

EPDs																
CE	BW	WW	YW	ADG	MCE	MM	MWW	STAY	DOC	CWT	YG	MARB	BF	REA	API	TI
8	2.6	86	139	.33	8	26	68	21	10.4	56.6	-.21	-.01	-.052	.85	122	73

HSR Power Plus D206 was acquired at the 2017 Dakota Express Bull Sale for his tremendous depth of rib and overall massive stoutness. He is a TJ Power Grid son that puts so much added dimension and heavy muscle into fault free structures with unique functionality which makes his sons and daughters stand out among other calves. Semen available at Hart Simmentals.



JBS Single Shot 601C

Homo. Black Homo. Polled 3/4 SM 1/4 AN ASA#3029617 Tattoo: 601C

Birth: 3-17-15

Gibbs 0689X Crimson Tide x JBS Miss G Design 4255

EPDs																
CE	BW	WW	YW	ADG	MCE	MM	MWW	STAY	DOC	CWT	YG	MARB	BF	REA	API	TI
8	4.0	77	122	.28	3	20	58	16	11.2	45.2	-.31	.30	-.072	.87	123	73

Single Shot was purchased from the top offering at the 2016 bull sale at JBS Simmentals. He is a 3/4 blood Crimson Tide son that has Bushs Grand Design on the bottom side. Single Shot's calves have shown us his incredible potential to be a big impact breeding bull that sires really long sided, wide based and heavy muscled progeny with tremendous extension. Semen available at Hart Simmentals.



SFI Enough Said D3

Black Homo. Polled Purebred ASA#3139289 Tattoo: D3

Birth: 1-29-16

CCR Cowboy Cut 5048Z x SFI Miss Too Sweet N85K

EPDs																
CE	BW	WW	YW	ADG	MCE	MM	MWW	STAY	DOC	CWT	YG	MARB	BF	REA	API	TI
9	2.3	74	105	.19	6	28	65	23	12.5	29.4	-.42	-.03	-.083	.93	130	70

SFI Enough Said D3 was the high selling bull in the 2017 Gold Bullion Bull Sale, selling to Hartman Cattle Co and CK Cattle Co for \$40,000. We tried to bring Enough Said home to SD but had to settle for second place, so what's the next best thing, get some semen! He sires extremely flashy cattle with tremendous extension and superior muscle mass that may or may not have some chrome and is a complete outcross for our program.



Hart Genuine 038A

Black Homo. Polled Purebred ASA#2731543 Tattoo: 038A

Birth: 2-19-13

ES Ridgerider YW3 x Hart Miss 129Y

EPDs																
CE	BW	WW	YW	ADG	MCE	MM	MWW	STAY	DOC	CWT	YG	MARB	BF	REA	API	TI
11	2.2	70	100	.19	7	30	65	22	13.7	5.1	-.49	-.05	-.103	.68	129	68

Hart Genuine 038A was our high selling bull in our 2014 bull sale going to Circle S Simmentals and Nichols Farms of Ohio for \$39,000. He is an ES Ridgerider YW3 son and out of a Hart First Class X160 dam that is a calving ease deluxe model. Genuine's calves boast really moderate birth weights that explode with huge gains with superb structural soundness and major muscle shape.



Herd Sires at Hart Simmentals



QB Diesel D25

Homo. Black Homo. Polled Purebred ASA#3199115 Tattoo: D25
Birth: 3-8-16

FBF1 Combustible x KnH Play On 458Z

EPDs																
CE	BW	WW	YW	ADG	MCE	MM	MWW	STAY	DOC	CWT	YG	MARB	BF	REA	API	TI
12	1.7	80	129	.31	8	16	56	10	11.5	40.2	-.27	-.11	-.076	.64	111	72

Diesel was the lead off bull at the 2017 Power By Design bull sale in Oakes ND. He is a FBF1 Combustible son that delivers as much mass and muscle that an individual can pack on. He stamps his calves with dimension and massive middles into highly marketable cattle with desirable traits with killer looks.



Hart Merritt 155B

Homo. Black Homo. Polled Purebred ASA#2843111 Tattoo: 155B
Birth: 3-12-14

ASR Final Sort X0151 x Hart Miss X279

EPDs																
CE	BW	WW	YW	ADG	MCE	MM	MWW	STAY	DOC	CWT	YG	MARB	BF	REA	API	TI
15	2.0	72	123	.32	7	31	67	18	12.5	43.0	-.40	-.18	-.106	.85	123	68

Merritt was a sale feature in our 2015 bull sale and definitely has found his place in our herd bull battery arsenal. Our experimental breeding for his first year brought a uniform and very good set of bulls, but this year's offering is off the charts in terms of muscle development, rib depth, hind quarter expression, and overall balance and soundness! Semen available Hart Simmentals.



DJF Trademark D634

Homo. Black Homo. Polled 3/4 SM 1/4 AN ASA#3145887 Tattoo: D634
Birth: 2-8-16

TJ Makers Mark 215Y x Double J Miss Z282

EPDs																
CE	BW	WW	YW	ADG	MCE	MM	MWW	STAY	DOC	CWT	YG	MARB	BF	REA	API	TI
13	2.1	92	141	.31	9	16	62	17	10.8	30.2	-.26	.08	-.059	.63	128	79

Trademark came to us from the Double J Simmental 2017 bull sale and is a TJ Makers Mark son that we put to service on our heifers. Trademark has matured into a flawless calving ease herd sire that is siring the most marketable and exciting cattle in the breed today. The phenotype that he is passing onto his calves is second to none, and they have great extension with a smooth shoulder while still possessing great rib capacity. Semen available at Hart Simmentals.



R&R Platinum D135

Homo. Black Homo. Polled 3/4 SM 1/8 AN 1/8 MX ASA#3170631
Tattoo: D135 Birth: 3-18-16

Profit x R&R Tyra Y135

EPDs																
CE	BW	WW	YW	ADG	MCE	MM	MWW	STAY	DOC	CWT	YG	MARB	BF	REA	API	TI
8	2.4	52	79	.16	4	32	59	17	10.3	23.9	-.40	.09	-.081	.81	116	61

Platinum was acquired at the 2017 Reimer Simmental Bull Sale and is a Profit son. After we had AI'd a few choice females to Profit and had really great success, we knew we had to find just the right Profit son that would really match well with our cows and Platinum fit that bill to a tee. He adds a totally different component that stamps out calves with refinement and an overall uniqueness to their stature.

Herd Sires at Hart Simmentals

Welsh's Warsaw 312Z

Homo. Black Homo. Polled Purebred ASA#2670606 Tattoo: 312Z
Birth: 2-2-12

FBFS Warsaw 068W x Welshs Rosie 102W

EPDs																
CE	BW	WW	YW	ADG	MCE	MM	MWW	STAY	DOC	CWT	YG	MARB	BF	REA	API	TI
11	1.0	79	102	.15	6	18	58	20	11.0	18.9	-.32	.00	-.088	.44	131	74

This outstanding herd sire has become a permanent calving ease staple in the industry, and is known nationwide for his unparalleled superior calving ease traits! His low birth weight calves are so explosive and full of vigor from the minute they hit the ground and easily gaining pounds from the get go. It is easy to see why his bull calf crop has been one of our top selling sire groups since they made their debut in 2015! Semen available at Hart Simmentals.



Hart Frisky Whiskey 010C

Homo. Black Homo. Polled Purebred ASA#2975526 Tattoo: 010C
Birth: 1-31-15

W/C Utah 534A x Hart Miss 385A

EPDs																
CE	BW	WW	YW	ADG	MCE	MM	MWW	STAY	DOC	CWT	YG	MARB	BF	REA	API	TI
8	2.5	75	102	.17	4	20	57	14	13.6	20.4	-.53	-.13	-.115	.89	104	67

Frisky Whiskey was one of the top selling bull from our 2106 bull sale, going to Todd O'Bryan from Kyle, SD, in which we had the pleasure of visiting him last summer and has matured into a stunning breeding masterpiece. His calves certainly had his patented look and stature to them at a young age and definitely had that depth of rib and super extension that Frisky Whiskey is known for.



JS Belmont 15B

Homo. Black Homo. Polled Purebred ASA#2865433 Tattoo: 15B
Birth: 3-29-14

GW-WBF Substance 820Y x JS Flatout Flirty 46T

EPDs																
CE	BW	WW	YW	ADG	MCE	MM	MWW	STAY	DOC	CWT	YG	MARB	BF	REA	API	TI
10	1.5	64	101	.24	8	25	57	14	12.4	38.4	-.46	.07	-.093	1.07	120	68

Belmont was purchased out of the 2015 Denver Pen of JS Simmentals out of Iowa. He is an absolute mega performance bull out of the Flatout Flirty dam that has produced many purple banner winners and class winners at many national shows. He blends power, explosiveness, data and mass in a very functional package that can be utilized in more than one direction. Semen available at Hart Simmentals.



Hart Mega Watts 019C

Homo. Black Homo. Polled Purebred ASA#2975627 Tattoo: 019C
Birth: 2-5-15

W/C Utah 534CA x SNF Prima Donna A-100

EPDs																
CE	BW	WW	YW	ADG	MCE	MM	MWW	STAY	DOC	CWT	YG	MARB	BF	REA	API	TI
11	1.1	78	102	.15	5	24	63	13	13.1	19.2	-.51	-.02	-.120	.77	116	74

Mega Watts is a grandson from SSIPRS High Voltage 244X and out of the SNF Prima Donna A-100 cow we purchased out of the Houston Stock Show and Sale. He was used on heifers and produced a set of super stretchy, highly functional, completely balanced group of mostly heifer calves. Semen available at Hart Simmentals.



Herd Sires at Hart Simmentals



GLS Integrate Z3

Homo. Black Homo. Polled Purebred ASA#2659754 Tattoo: Z3 Birth: 1-1-12

Mr. NLC Upgrade U8676 x GLS Miss BTE W149

EPDs																
CE	BW	WW	YW	ADG	MCE	MM	MWW	STAY	DOC	CWT	YG	MARB	BF	REA	API	TI
15	2.5	102	167	.40	10	16	67	12	16.5	65.3	-.51	-.07	-.142	1.21	128	87

We purchased this high selling bull from the 2013 Grass-Lunning Simmental Bull Sale, which proved to be a huge game changing decision for our program. No doubt his massive depth and length of rib are the key contributing factors to producing the high caliber of cattle that we are known for and has elevated our customers approval and their need to continue purchasing these superior genetics. Semen available at Select Sires.



ES Ridgerider YW3

Homo. Black Homo. Polled Purebred ASA#2597533 Tattoo: YW3 Birth: 2-18-11

CDI Ridgeline 32T x ES W3

EPDs																
CE	BW	WW	YW	ADG	MCE	MM	MWW	STAY	DOC	CWT	YG	MARB	BF	REA	API	TI
14	-1.6	65	92	.17	8	29	62	22	11.6	9.7	-.66	-.18	-.121	1.11	131	68

Ridgerider is undoubtedly the most complete calving ease Simmental bull to surface in some time. His proven pedigree combined with his flawless presence makes him a truly unique breeding piece and one that you should have in your arsenal. His low birth weight progeny excel at such a rapid pace, ensuring you with above average weaning performance. His daughters continue to build on his reputation as a great calving ease and maternal sire. Semen available at Hart Simmentals.



M4 Blackstone Z43B

Homo. Black Homo. Polled Purebred ASA#3204217 Tattoo: Z43B Birth: 1-13-16

Hook's Yellowstone 97Y x M4 Ms. Voltage Z43B

EPDs																
CE	BW	WW	YW	ADG	MCE	MM	MWW	STAY	DOC	CWT	YG	MARB	BF	REA	API	TI
11	1.6	89	128	.25	5	21	66	16	11.5	26.3	-.37	.13	-.084	.73	134	83

We purchased Blackstone from the 2017 Gold Bullion Bull Sale and is a Hook's Yellowstone son that is phenotypically complete with astonishing EPDs that rank him in the top percentile for almost every measured trait. He will add performance in a very desirable package and sire calves the stoutness, muscle shape, extra rib dimension and overall extra stretch.



SVF Z47 Patch

Hetero. Black Homo. Polled Purebred ASA#2751226 Tattoo: Z47 Birth: 9-29-12

JF Milestone 999W x SVF/NJC Expectation N206

EPDs																
CE	BW	WW	YW	ADG	MCE	MM	MWW	STAY	DOC	CWT	YG	MARB	BF	REA	API	TI
8	3.5	81	127	.29	4	23	64	17	12.3	34.8	-.36	-.09	-.102	.67	116	71

Patch was purchased from JS Simmentals as a source of flashy, fancy and eye appealing cattle with that perfect chrome package. He sires the type of calves that have an incredible amount of body structure, tremendous muscle mass and expression, super correct and they just have that it factor that every cattleman wants!



W/C Utah 534A

Homo. Black Homo. Polled Purebred ASA#2752290 Tattoo: 534A Birth: 3-14-13

Yardley High Regard Y361 x Miss Werning 534R

EPDs																
CE	BW	WW	YW	ADG	MCE	MM	MWW	STAY	DOC	CWT	YG	MARB	BF	REA	API	TI
12	.6	62	79	.10	4	20	51	12	15.4	14.4	-.43	-.07	-.097	.67	107	63

Utah was purchased out of the top calf crop in the 2014 Werning Cattle Company Bull Sale. He really excels for capacity and functionality, and blends unlimited power, great data and maternal dominance into a top notch desirable package. His daughters are flawless in their phenotype, have text book udders with great milking ability. Semen available at Hart Simmentals.

Sons of BBS True Justice B10

LOT
1

Hart Barricade 165F

Homozygous Black Homozygous Polled Purebred

ASA#3411505 Tattoo: 165F Birth: 2-25-18
Act. BW: 83 ET Adj. WW: 856 WW Ratio: N/A

EPDs																
CE	BW	WW	YW	ADG	MCE	MM	MWW	STAY	DOC	CWT	YG	MARB	BF	REA	API	TI
8	1.5	71	109	.24	6	33	68	17	11.8	24.5	-.56	.04	-.130	.92	123	72
Rank		30 25		1 2		35		10		20		30		35		

HOMOZYGOUS
PLD

HOMOZYGOUS
BLK



JDJ Rich And Rare, Dam



Hart Prime 017E,
Paternal Sibling

BBS True Justice B10 BDV True Grit 11X
BBS Miss Justice Z7
JDJ Rich And Rare 125 JDJ Intimidator 080K
Drake Chaos

Hart Barricade 165F, a True Justice embryo son out the JDJ Rich & Rare 12S is ramping up the bar in terms of predictable consistency, huge growth curves and unmatched performance. We threw an enormous amount of breeding avenues at True Justice to test the waters and every single mating knocked it out of the park!! If you are part of the beef industry to make money and raise high performing stock, and we don't know to many producers who aren't, then you just can't beat a True Justice son. Barricade has quite a few similarities to Hart Prime 017E, who is a True Justice super star, showcases his own build with a tremendous amount of muscle mass, huge deep rolling middle, and extensive hind quarter!

LOT
2

Hart 277F

Homozygous Black Heterozygous Polled Purebred

ASA#3411754 Tattoo: 277F Birth: 3-13-18
Act. BW: 90 Adj. WW: 855 WW Ratio: 113

EPDs																
CE	BW	WW	YW	ADG	MCE	MM	MWW	STAY	DOC	CWT	YG	MARB	BF	REA	API	TI
9	2.4	74	118	.28	5	32	69	17	11.0	30.6	-.56	.01	-.108	1.17	124	73
Rank		25 15 10		2 2		10		3		30						

BDV True Grit 11X
BBS True Justice B10
BBS Miss Justice Z7
New Trend Way Cool 6W
Hart Miss 262A
Hart Lady Locator P343

- Dams Ratios - BW 3@101, WW 3@105
- Hart 097D, True Justice son, went to a great program of Beitelspacher Farms of Hoven, SD in 2017
- Hart New Vision 042C was purchased for 1/2 interest by Dikoff Ranch of Onaka, SD & Hart Simmentals

We couldn't be more impressed with the performance that our females are accomplishing and keep exceeding all our expectations to push the boundaries in the most prominent ways. We are very critical and precise when it comes to choosing what females are kept here in our herd and only females that we feel will have a positive influence on our program get to run in our pastures. This Way Cool daughter is at the top of her game and has brought us another perfectly balanced bull that has seamless extension from front to back and is standing on an excellent foundation of great legs and big feet.

HOMOZYGOUS
BLK

LOT
3

Hart 259F

Homozygous Black Homozygous Polled Purebred

ASA#3411927 Tattoo: 259F Birth: 3-11-18
Act. BW: 92 Adj. WW: 836 WW Ratio: 110

EPDs																
CE	BW	WW	YW	ADG	MCE	MM	MWW	STAY	DOC	CWT	YG	MARB	BF	REA	API	TI
7	2.6	75	114	.24	5	28	65	19	10.9	24.2	-.61	-.03	-.135	1.03	122	72
Rank		20 20 25		10 10 30		1		10 15		35						

BBS True Justice B10 BDV True Grit 11X
BBS Miss Justice Z7
Hart Miss 680Y Hart Stubby S059
Hart Miss Lewy P382

- Dam's Merritt Son, Hart 207D, went to work on a great set of females at the Tom and Jordan Geffre Ranch of Crete, SD
- Produced 3 replacement females.

This True Justice individual is the kind of calf that we all strive to raise, but this one has a bit of a twist to his pedigree going back to Hart Stubby. Hart 259F has been uniformly stamped with that incomparable TJ power with added bone mass and overall extra dimension. He is going to be that perfect tool that will sire explosive growth on both sons and broody replacements.

HOMOZYGOUS
PLD

HOMOZYGOUS
BLK

**LOT
4**



**HOMOZYGOUS
BLK**
**HOMOZYGOUS
PLD**



BBS True Justice, Sire

3 Full Brothers of BBS True Justice B10

**LOT
4**

Hart 156F

Homozygous Black Homozygous Polled Purebred
ASA#3411503 Tattoo: 156F Birth: 2-23-18
Act. BW: 80 ET Adj. WW: 922 WW Ratio: N/A

**HOMOZYGOUS
PLD** **HOMOZYGOUS
BLK**

EPDs																
CE	BW	WW	YW	ADG	MCE	MM	MWW	STAY	DOC	CWT	YG	MARB	BF	REA	API	TI
14	1.5	78	119	.26	10	33	72	18	14.1	25.7	-.46	.00	-.113	.76	133	76
Rank		15	10	15	3	1	1		10						25	15

**LOT
5**

Hart 175F

Homozygous Black Homozygous Polled Purebred
ASA#3411510 Tattoo: 175F Birth: 2-27-18
Act. BW: 87 ET Adj. WW: 847 WW Ratio: N/A

**HOMOZYGOUS
PLD** **HOMOZYGOUS
BLK**

EPDs																
CE	BW	WW	YW	ADG	MCE	MM	MWW	STAY	DOC	CWT	YG	MARB	BF	REA	API	TI
8	1.5	78	118	.25	6	32	71	20	8.6	16.0	-.50	.03	-.123	.68	132	76
Rank		15	15	20	35	2	1	10			30		20		30	20

**LOT
6**

Hart 236F

Homozygous Black DbL. Polled Purebred
ASA#3441516 Tattoo: 236F Birth: 3-8-18
Act. BW: 85 ET Adj. WW: 942 WW Ratio: N/A

**HOMOZYGOUS
BLK**

EPDs																
CE	BW	WW	YW	ADG	MCE	MM	MWW	STAY	DOC	CWT	YG	MARB	BF	REA	API	TI
10	1.5	78	119	.25	7	33	72	20	9.0	19.2	-.51	.03	-.127	.74	135	77
Rank		15	15	20	20	1	1	10			25		20		25	15

LOT
515



Pedigree for Lots 4-6:

BBS True Justice B10	BDV True Grit 11X
	BBS Miss Justice Z7
KS Sierra R992	HC Hummer 12M
	KS Kayla J497

• Dams Ratios - WW Ratio for her 4 natural calves 4@117
 KS Sierra R992 produced her standout WCS El Dorado 5209C whom was a featured herd bull at Accelerated Genetics and has produced such standouts as Hart Laredo 178E going to Chad Jessen of Redfield, SD; Hart Durango 240E going to Steve Stoddard of Broadus, MT; Hart Silverado 346E going to Ryan Opitz of Eden, SD.
 We don't do a huge amount of embryo work due to the fact that our females all have the abilities to produce outstanding progeny on their own, but when the opportunity to purchase a flush from KS SIERRA R992- the dam of our own El Dorado at the Foxy Ladies female sale in Crawford NE, we jumped on it. We pondered on which of our herd sires would be the most suitable prospect and True Justice naturally jumped right into our head. These scale busting embryo bull calves out of True Justice and Sierra pulled out all the stops and raised the bar to an all-time high and are built with immense style, supreme muscle mass, tremendous function and balance and averaged 904lbs at weaning time. Hart Prime 017E was our first offering of what True Justice's raw power emits and this so far is text book as far as these TJ calves go and breeders are genuinely impressed with their results and are excited about the prospects of these breeding masterpieces!!!



Hart Durango 240E, El Dorado Son



Hart Silverado 346E, El Dorado Son



Hart Prime 017E, Paternal Sibling



KS Sierra R992, Dam



Hart Laredo 178E, El Dorado Son



Hart Confidence 188F

Homozygous Black Homozygous Polled Purebred

ASA#3411800 Tattoo: 188F Birth: 3-1-18
Act. BW: 83 Adj. WW: 835 WW Ratio: 110

BBS True Justice B10

BDV True Grit 11X

BBS Miss Justice Z7

Hart Miss 330C

JF Made In America 210Z

Hart Miss 326Z

EPDs																
CE	BW	WW	YW	ADG	MCE	MM	MWW	STAY	DOC	CWT	YG	MARB	BF	REA	API	TI
10	1.6	78	125	.29	6	30	69	17	9.5	20.2	-.48	.09	-.106	.82	133	78
Rank		15	5	4	35	3	2					30			25	10

- Dams Ratios - WW 1@110

In just 3 short years, True Justice has pushed to the forefront of extreme power performance traits and proven that he is just not a passing fancy. Hart Confidence 188F is constructed with a ton of mass and stoutness in a very refined, flashy and eye appealing package which is stacked onto a

perfectly big foot and superb leg set! If your herd bull hunt is in search of a homo black/ homo polled stud from some of the best genetics in the industry, then your hunt is over!



Hart 245F

Homozygous Black Homozygous Polled Purebred

ASA#3411617 Tattoo: 245D Birth: 3-9-18
Act. BW: 74 Adj. WW: 883 WW Ratio: 116

BDV True Grit 11X

BBS True Justice B10

BBS Miss Justice Z7

Hart In Time W095

Hart Miss 116Y

Hart Miss Club King W473

EPDs																
CE	BW	WW	YW	ADG	MCE	MM	MWW	STAY	DOC	CWT	YG	MARB	BF	REA	API	TI
14	.2	75	118	.27	9	27	65	20	12.4	20.7	-.46	.02	-.110	.73	140	77
Rank		10	20	20	15	10	10	10	20	25					15	15

- Dams Ratios - BW 6@103, WW 6@105, YW 2@102
- Produced 4 replacement females.
- Recommended Heifer Bull

We have to say that we are faced with the same stressful agonizing choices when it comes to finding a herd bull prospect as our patron's face. We know what great cattle look like, but when it comes to selecting an individual that will enhance a female's excellent qualities, it is sort of like a box of chocolates or opening a present on Christmas morning- you never know what you'll get- until you see the proof! Our first year with True Justice gave us some top shelf bulls to offer and the true value of what he can accomplish is really starting to surface. As the years go by, we seem to have found where strength lies and what sort of females to pair him with. Hart 245F is out of our most favorite In Time and Club King daughter, sporting a very high weaning weight and has that herd bull look with real herd bull figures!



Hart 035F

Homozygous Black Homozygous Polled Purebred

ASA#3411788 Tattoo: 035F Birth: 1-24-18
Act. BW: 78 Adj. WW: 803 WW Ratio: 106

BDV True Grit 11X

BBS True Justice B10

BBS Miss Justice Z7

JF Rancher 222Z

Hart Miss 312D

Hart Ms. Dreammaker U489

EPDs																
CE	BW	WW	YW	ADG	MCE	MM	MWW	STAY	DOC	CWT	YG	MARB	BF	REA	API	TI
10	2.8	80	124	.27	6	35	75	17	14.5	26.7	-.50	.03	-.117	.88	127	77
Rank		10	10	10	35	1	1	10			30					15

- Out of a first calf heifer
 - Grandams Ratios - WW 9@104, YW 6@100
 - Produced 4 feature bulls in the 2015, 2014, 2012 & 2011 bull sales and 3 replacement females.
- True Justice calves are popping up all over the industry proving that he continually produces the goods and breeders are noticing his superior quality of progeny. The reason we invest in genetics like this is simple-power, performance and production. You must keep improving the genetics in your program, keeping integrity fresh and abundant. Our industry and livelihood demands carefree cattle with a profit and Hart 035F will fit that bill perfectly. He has both balance and style coupled with stoutness and depth that will insure his genetic value.*





HOMOZYGOUS
BLK
HOMOZYGOUS
PLD

LOT
10

Hart 173F

Homozygous Black Homozygous Polled Purebred

ASA#3411592 Tattoo: 173F Birth: 2-27-18
Act. BW: 90 Adj. WW: 890 WW Ratio: 117

EPDs																
CE	BW	WW	YW	ADG	MCE	MM	MWW	STAY	DOC	CWT	YG	MARB	BF	REA	API	TI
9	1.0	70	106	.22	5	36	71	21	8.7	28	-.49	.01	-.110	.92	131	72
Rank		35				1	1	5						30	30	35

BBS True Justice B10 BDV True Grit 11X
BBS Miss Justice Z7
Hart Miss 094A AJE/HS/MBCC Outlook
Hart Lady Openrange U664

• Dams Ratios - WW 2@114, YW 1@114
We find that the True Justice influence in our cow herd has pushed our power performance to a whole new level and brings supreme body mass, extra internal dimension, extra overall length of spine, and unprecedented growth rates! This young Outlook dam has shown her spunk and cranked out a belly whopper and is a fabulous contender that will follow in True Justice's footsteps and be the next big thing!

LOT
11

Hart 319F

Heterozygous Black Homozygous Polled Purebred

ASA#3411657 Tattoo: 319F Birth: 3-18-18
Act. BW: 83 Adj. WW: 803 WW Ratio: 106

EPDs																
CE	BW	WW	YW	ADG	MCE	MM	MWW	STAY	DOC	CWT	YG	MARB	BF	REA	API	TI
12	2.4	84	128	.28	8	29	70	20	15.0	42.4	-.35	.07	-.092	.81	139	79
Rank		20	4	4	10	10	5	1	20	5	5	35			15	10

BBS True Justice B10 BDV True Grit 11X
Hart Miss 157B BBS Miss Justice Z7
WS All-Around Z35
Hart Lady Impact U305

HOMOZYGOUS
PLD

• Dams Ratios - WW 3@106, YW 2@106
• Hart Jig Saw 044D found his home at the Keith & Tracy Burgod Ranch in Ipswich, SD, in 2017
• Produced 1 replacement female.
Hart 319F's All-Around dam has some pretty impressive credentials in her young career and is only picking up momentum as she goes. Her True Justice son boasts an incredible EPD profile and when you evaluate him in the flesh you will agree that he is even better in person. 319F is constructed in the same TJ structure that is a mash up of tons of muscle mass with a different refinement that makes him very eye appealing from whatever direction you look at him.

LOT
12

Hart 345F

Homozygous Black Homozygous Polled Purebred

ASA#3411551 Tattoo: 345F Birth: 3-21-18
Act. BW: 83 Adj. WW: 797 WW Ratio: 105

EPDs																
CE	BW	WW	YW	ADG	MCE	MM	MWW	STAY	DOC	CWT	YG	MARB	BF	REA	API	TI
10	1.3	80	120	.25	7	24	64	21	13.8	35.1	-.41	.13	-.102	.83	141	79
Rank		10	10	20	25	25	10	10	15	20		25			15	10

BBS True Justice B10 BDV True Grit 11X
Hart Miss 040C BBS Miss Justice Z7
Welsh's Warsaw 312Z
Hart Miss 119A

HOMOZYGOUS
PLD HOMOZYGOUS
BLK

• Dams Ratios - WW 2@101
• Produced 1 replacement female.
Here is another very impressive True Justice son out of a Warsaw daughter that is doing a very good job for us. He is very balanced up through his front end and is built just how we like them, beefy, deep middled and with all the right pieces that will produce sound results.

Sons of WCS El Dorado 5209C



- Dams Ratios - BW 6@101, WW 6@106, YW 5@102
- Hart Timbercreek 115D was kept by Hart Simmentals to work here in our program.
- Hart 186C, a Made In America son, went to work for new customer Jeff Merkel of Slick Creek Ranch of Hettinger, ND.
- Hart 055A, Chisum son, was added to repeat customers of Maurie Larsen of Burwell, NE.
- Produced 2 replacement females.

Hart 266F is the next standout sale feature in long line of prominent herd bulls sold here at Hart Simmentals, and this year's calf is solid proof that this Triple C Agility dam has a proven track record for raising the right type of individual! He definitely stands out in a crowd with his added overall muscle type, extra stretch and super function and ideal structure.

LOT 13

Hart 266F

Homozygous Black Homozygous Polled Purebred

ASA#3411920 Tattoo: 266F Birth: 3-12-18
Act. BW: 87 Adj. WW: 779 WW Ratio: 103

EPDs																
CE	BW	WW	YW	ADG	MCE	MM	MWW	STAY	DOC	CWT	YG	MARB	BF	REA	API	TI
11	2.8	73	114	.25	5	24	61	20	12.6	28.8	-61	-10	-.133	1.12	124	69
Rank		30	20	20		25	20	15	25		1		10	5		

WCS El Dorado 5209C

Hart Miss 642Y

LRS Turning Point3117A

KS Sierra R992

Triple C Agility U48R

Hart Miss Paramount R200

PLD **BLK**



LOT 14

Hart Boomerang 064F

Homozygous Black Homozygous Polled Purebred

ASA#3411909 Tattoo: 064F Birth: 1-30-18
Act. BW: 87 Adj. WW: 865 WW Ratio: 114

EPDs																
CE	BW	WW	YW	ADG	MCE	MM	MWW	STAY	DOC	CWT	YG	MARB	BF	REA	API	TI
7	3.3	78	122	.27	4	33	72	19	13.0	37.4	-.44	-.02	-.124	.78	122	73
Rank		15	10	10		1	1	35	20	15			20			30

- Dams Ratios - BW 5@101, WW 5@108, YW 3@109
- Hart Derby 062E was a 2018 sale highlight sired by JS Belmont that made his way to the McDonald Angus Ranch of Leonard, ND.
- Hart Jaxon 173D produced proven results at the Steve Stoddard Ranch of Broadus, MT.
- Produced 1 replacement female.

Hart Miss 605Z has methodically stamped out super tremendous progeny from each and every mating and her EL Dorado bull from this years pairing is no exception and is a clone to these two great bulls that came before him. Boomerang is blessed with spot on structural correctness from every standpoint and is compiled with tremendous power, impressive rib shape, extensive hip structure into a fault free highly desirable package and deserves your utmost attention and appraisal!

WCS El Dorado 5209C LRS Turning Point3117A
Hart Miss 605Z KS Sierra R992
JAX 28X
Hart Lady Goldy U259

BLK

PLD

LOT 15

Hart 283F

Homozygous Black Homozygous Polled Purebred

ASA#3411825 Tattoo: 283F Birth: 3-13-18
Act. BW: 90 Adj. WW: 854 WW Ratio: 113

EPDs																
CE	BW	WW	YW	ADG	MCE	MM	MWW	STAY	DOC	CWT	YG	MARB	BF	REA	API	TI
3	3.6	78	118	.25	2	28	66	14	14.1	39.4	-.46	-.21	-.116	.93	95	66
Rank		15	15	20		10	4		10	10				30		

WCS El Dorado 5209C LRS Turning Point3117A
Hart Miss 364Z HL Urban Legand 091U
Hart Miss Limit Up P234

- Dams Ratios - WW 5@102
- Hart 158D, Nationwide son, sold to Duke Duzik in 2017 of Craig, CO.
- Hart 180B went to work on a great set of cows at the Kevin Horihan Ranch of Lanesboro, MN in 2015.
- Produced 2 replacement females

Hart 283F stems from a highly productive Urban Legand daughter with progeny scattered all throughout the states and her El Dorado son tops the scales at 854 weaning weight and is a big topped rascal with tons of natural rib and extra length, allowing him to continue laying on the extra mass and muscle.

PLD **BLK**



Hart 084F

Homozygous Black Homozygous Polled Purebred

ASA#3411771 Tattoo: 084F Birth: 2-3-18
Act. BW: 85 Adj. WW: 879 WW Ratio: 116

EPDs																
CE	BW	WW	YW	ADG	MCE	MM	MWW	STAY	DOC	CWT	YG	MARB	BF	REA	API	TI
8	2.8	85	130	.28	5	27	69	18	14.3	39.2	-.41	-.16	-.102	.88	118	73
Rank		3	3	10		15	2		10	10						30

WCS El Dorado 5209C

LRS Turning Point3117A
KS Sierra R992

Hart Miss 285A

OBCC King Pin W42Y
Hart Miss X375

- Dams Ratios - WW 4@105
- Her Hart Merritt sale feature from 2017 went to the Dale Pitzel Ranch of Eden, SD.

This El Dorado individual combines an extraordinary array of genetically powerful EPDs that matches his impressive phenotype of strength and stature to a tee. He has more than enough width across his top and right down to his wide base and incredible hoof structure.



Hart 128D,
Maternal Brother



Hart Long Range 047F

Homozygous Black Homozygous Polled Purebred

ASA#3411833 Tattoo: 047F Birth: 1-27-18
Act. BW: 87 Adj. WW: 821 WW Ratio: 108

EPDs																
CE	BW	WW	YW	ADG	MCE	MM	MWW	STAY	DOC	CWT	YG	MARB	BF	REA	API	TI
7	2.9	71	111	.25	4	31	67	20	11.6	34.6	-.48	-.10	-.126	.83	118	67
Rank		25	20			2	4	15	35	25						20

WCS El Dorado 5209C

LRS Turning Point3117A
KS Sierra R992

Hart Miss X374

Hart Black Label U009
Hart Gold Mine Lass U137

- Grandams Ratios - BW 7@103, WW 7@104, YW 4@104
- Her 2017 sale feature out of JF Rancher worked hard at the very prestigious Steve Stoddard Ranch of Broadus, MT. Another JF Rancher standout in 2016 made his way to the Todd O'Bryan program of Kyle, SD, and produced 2 replacement females.

Here is a El Dorado son with huge credentials, massive performance data and crushed the scale over 800lb at weaning time. He has a huge sweeping rib shape, deep chest, extra body length and impeccable balance. His dam has had great success and her progeny always bring a premium and possess a look that people are just draw to. If your herd bull hunt is in search of a homo black/homo polled stud, we hope you will consider Hart Long Range for your program.



Hart 160C,
Maternal Brother



Hart 094F

Homozygous Black Homozygous Polled Purebred

ASA#3411638 Tattoo: 094F Birth: 2-4-18
Act. BW: 78 Adj. WW: 798 WW Ratio: 105

WCS El Dorado 5209C

LRS Turning Point3117A
KS Sierra R992

Hart Miss 138C

W/C Utah 534A
Hart Ms. Directforce W232

- Dams Ratio - BW 2@111

Hart 094F is a smooth made El Dorado bull with great muscle shape, extra rib dimension, and abundance thickness. He is out of a young Utah dam that displays an abundance of girth and has an undeniable maternal look with a fantastic udder with perfect teat placement. He has huge curve bending growth that is extremely eye catching and showcases some real world functionality.

EPDs																
CE	BW	WW	YW	ADG	MCE	MM	MWW	STAY	DOC	CWT	YG	MARB	BF	REA	API	TI
7	2.1	77	116	.24	4	24	63	17	16.4	32.1	-.050	-.09	-.122	.91	116	71
Rank		15	20	25		25	15		2	35	30		20	30		



Hart 067F

Homozygous Black Homozygous Polled Purebred

ASA#3411613 Tattoo: 067F Birth: 1-31-18
Act. BW: 90 Adj. WW: 817 WW Ratio: 108

WCS El Dorado 5209C

LRS Turning Point3117A
KS Sierra R992

Hart Miss 115Y

Hart Black Label U009
Hart Miss Club King W332

- Dams Ratios - BW 6@102, WW 5@103

Hart 067F has all the components to flourish into a big time versatile herd bull that showcases extra rib shape, fleshiness and neck extension that are right for the times. He has super marketability backed by a very strong maternal lineage that makes him a combination of functionality and predictability!

EPDs																
CE	BW	WW	YW	ADG	MCE	MM	MWW	STAY	DOC	CWT	YG	MARB	BF	REA	API	TI
6	3.1	73	117	.27	3	30	66	20	14.7	30.6	-.35	-.04	-.094	.62	119	69
Rank		30	15	10		4	5	20	10							



LOT 20



HOMOZYGOUS
BLK
HOMOZYGOUS
PLD

Sons of Hart Eclipse 510Y



JDJ Rich And Rare 12S, Dam



HOMOZYGOUS
BLK
LOT 21
HOMOZYGOUS
PLD

Pedigree for Lots 20-21:

Hart Eclipse 510Y HL Urban Legend 091U
 Hart Lady Gambler M042
 JDJ Rich And Rare 12S JDJ Intimidator 080K
 Drake Chaos

These two full embryo brothers out of the pairing of Hart Eclipse 510Y and JDJ Rich and Rare 12S has generated big time interest with a lot of excitement. Along with full embryo sister Hart Miss 378A, Hart Miss 384A, Hart Miss 385A who are producing some of the most elite sale highlights here are Hart Simmentals such as Hart Iron Rod 316F, Hart Hitman 184E, Hart Deputy Dog 035D, Hart Frisky Whiskey 010C. We saved a few of these precious embryos with the idea to use them at a later date to produce more of these incredible, tremendous females to keep our program fresh and to keep up to date with the latest and newest genetics. We were blessed with 2 bulls that have full-blown power, fault free structures, immense bone and unmatched muscle type! Take a look of that extreme length that these 2 bulls possess giving that added extra dimension to really pack on the pounds.

LOT 20

Hart 172F

Homozygous Black Homozygous Polled Purebred
 ASA#3411508 Tattoo: 172F Birth: 2-27-18
 Act. BW: 74 ET Adj. WW: 881 WW Ratio: N/A

EPDs																
CE	BW	WW	YW	ADG	MCE	MM	MWW	STAY	DOC	CWT	YG	MARB	BF	REA	API	TI
5	3.0	68	102	.21	5	27	61	14	15.6	30.4	-.44	-.12	-.106	.81	100	63
Rank		15			20		4									

LOT 21

Hart Billboard 214F

Homozygous Black Homozygous Polled Purebred
 ASA#3411515 Tattoo: 214F Birth: 3-4-18
 Act. BW: 87 ET Adj. WW: 927 WW Ratio: N/A

EPDs																
CE	BW	WW	YW	ADG	MCE	MM	MWW	STAY	DOC	CWT	YG	MARB	BF	REA	API	TI
8	2.5	66	98	.20	7	28	61	16	12.5	25.3	-.39	.06	-.102	.62	118	67
Rank		25		10		20		25								

Sons of DKSR Hollow Point C66

LOT 22

Hart 302F

Homozygous Black Homozygous Polled Purebred

ASA#3411787 Tattoo: 302F Birth: 3-15-18
Act. BW: 83 Adj. WW: 766 WW Ratio: 101

EPDs																	
CE	BW	WW	YW	ADG	MCE	MM	MWW	STAY	DOC	CWT	YG	MARB	BF	REA	API	TI	
10	2.4	70	108	.23	4	30	65	18	10.7	35.2	-.36	.04	-.104	.64	125	70	
Rank		35 35		3 10		20											

TNT Outlaw A316
DKSR Hollow Point C66
KS Zahara Z710
SAS T101 Sweet Meat
Hart Sweet Sandy W311
Hart Beef Plus Lass P694

- Dams Ratios - WW 8@102, YW 7@101
- Hart 302D, Rancher son, sold in the 2017 sale to Nathan Wipf of Frankfort, SD.
- Hart CEO 266Z sold to a top notch outfit of Glen Aldentaler of Britton, SD in 2013.
- Produced 3 replacement females.

Here is a Hollow Point son that has dense muscle mass on a more moderate frame and he really sets up nicely on great legs and big feet. He boasts some impressive EPD data to match that impressive stature and has a lot to offer any seed stock or commercial cattle producer.



Hart CEO 266Z,
Maternal Brother



HOMOZYGOUS BLK
HOMOZYGOUS PLD

LOT 23

Hart Hitchcock 216F

Homozygous Black Homozygous Polled Purebred

ASA#3411807 Tattoo: 216F Birth: 3-5-18
Act. BW: 83 Adj. WW: 784 WW Ratio: 103

EPDs																	
CE	BW	WW	YW	ADG	MCE	MM	MWW	STAY	DOC	CWT	YG	MARB	BF	REA	API	TI	
7	3.2	82	129	.29	4	21	62	20	11.4	44.3	-.39	.14	-.106	.85	135	78	
Rank		5 3 4		15 10		3		20						20 10			

DKSR Hollow Point C66 TNT Outlaw A316
KS Zahara Z710
Hart Miss 341Z HL Urban Legand 091U
Hart Frontman Lass R327

- Dams Ratios - BW 5@100, WW 5@103, YW 2@108
- If you are seeking a rugged built black bull out of a highly maternal dam, then nothing will fit the bill better than Hitchcock. He is a poster boy for the type of individual that Hollow Point in known for, like low statured, powerfully stout build while maintaining sound movement and impeccable body structure.

HOMOZYGOUS PLD **HOMOZYGOUS BLK**

LOT 24

Hart 158F

Homozygous Black Homozygous Polled Purebred

ASA#3411683 Tattoo: 158F Birth: 2-24-18
Act. BW: 74 Adj. WW: 779 WW Ratio: 103

EPDs																	
CE	BW	WW	YW	ADG	MCE	MM	MWW	STAY	DOC	CWT	YG	MARB	BF	REA	API	TI	
14	1.4	71	111	.25	6	24	60	21	12.9	16.2	-.41	.14	-.115	.46	145	75	
Rank		10		35 25 20 35 30 25 10 20		20						20		10 20			

DKSR Hollow Point C66 TNT Outlaw A316
KS Zahara Z710
Hart Miss 189A RFS Direct Force T19
Hart Black Classic Lady

- Dams Ratios - BW 3@104, WW 2@103
- Hart 158F is the perfect example of Hollow Point's dominating characteristics of exemplary muscle shape and definition, classic uniformity, which transcends sown into his progeny. You can't help but be impressed with his enhanced attributes and will surely maximize profit potentials!

HOMOZYGOUS BLK
HOMOZYGOUS PLD

LOT 25

Hart 111F

Homozygous Black Homozygous Polled Purebred

ASA#(3411831) Tattoo: 111F Birth: 2-8-18
Act. BW: 83 Adj. WW: 787 WW Ratio: 104

EPDs																	
CE	BW	WW	YW	ADG	MCE	MM	MWW	STAY	DOC	CWT	YG	MARB	BF	REA	API	TI	
12	1.5	75	116	.25	4	21	58	19	11.2	32.4	-.39	.11	-.102	.73	136	75	
Rank		30		20 20 20		35 35		35		30				20 20			

DKSR Hollow Point C66 TNT Outlaw A316
KS Zahara Z710
Hart Miss 371Z Dillons In Time
Hart Miss X633



Hart 003B,
Maternal Brother

- Dams Ratios - BW 4@100
 - Her Warsaw standout from 2015 went to work for Rydeen Simmentals of Clearbrook, MN.
 - Produced 3 replacement females.
- Hollow Point's second set of offerings has quickly affirmed that he definitely has the stability and possess the capacity for siring moderate birth weight sons and daughters with explosive growth and ultimate function for any cattle producer to utilize. HART 111F will add stretch and pounds in a hurry to your calf crop and is an excellent direction to look when needing to stouten up a set of calves.

HOMOZYGOUS PLD **HOMOZYGOUS BLK**

HART SIMMENTALS
Power Bull Sale

LOT 26

Hart 075F

Homozygous Black Homozygous Polled Purebred

ASA#(3411691) Tattoo: 075F Birth: 2-2-18
Act. BW: 90 Adj. WW: 802 WW Ratio: 106

DKSR Hollow Point C66 TNT Outlaw A316
KS Zahara Z710
Hart Ms. Crossfire W195 JBS Mr. Crossfire 701R
Hart Miss Limit Up N134

EPDs

CE	BW	WW	YW	ADG	MCE	MM	MWW	STAY	DOC	CWT	YG	MARB	BF	REA	API	TI
9	2.7	77	118	.26	3	22	61	20	11.4	21.8	-33	.07	-.101	.39	131	73
Rank		15	15	15			20	15				35			35	30

- Dams Ratios - WW 8@101, YW 5@105
- Hart Spark Plug 168E out of Integrate was a 2018 sale highlight that hangs his hat at the prominent McDonald Angus Ranch of Leonard ND.
- Hart 106D, another Integrate standout went to work on a fantastic set of females at the Travis Thompson Ranch of Oakes ND.



HOMOZYGOUS BLK

HOMOZYGOUS PLD

Hart 192C, Maternal Brother

• Hart 192C, yet another son of Integrate, was a 2016 standout and went to work for Tracy and Keith Burgod of Ipswich, SD.
The bulls that this prominent Crossfire dam has produced with the partner of Integrate have been second to none. Her new partner, Hollow Point, has matured into a flawless herd sire that is rivaling the sheer performance of Integrate and is siring the most marketable and exciting Simmental cattle in the breed. He has brought forth a herd bull candidate that has that same abundance of soft natural muscle shape, depth of body that is unprecedented and has unbelievable balance into a striking, eye catching completely universal stature!



Hart Sparkplug 168E, Maternal Brother



Hart 106D, Maternal Brother

LOT 27

Hart 069F

Homozygous Black Homozygous Polled Purebred

ASA#(3411921) Tattoo: 069F Birth: 2-1-18
Act. BW: 87 Adj. WW: 781 WW Ratio: 103

DKSR Hollow Point C66 TNT Outlaw A316
KS Zahara Z710
Hart Ms. Crossfire U650 JBS Mr. Crossfire 701R
Hart Lady Express K371

EPDs

CE	BW	WW	YW	ADG	MCE	MM	MWW	STAY	DOC	CWT	YG	MARB	BF	REA	API	TI
8	2.8	76	116	.25	3	22	60	20	10.8	26.1	-.40	.05	-.098	.71	130	73
Rank		20	20	20			25	15							35	30

- Dams produced a True Justice 2017 Sale highlight and is living out the good life on the Maurie Larsen Ranch of Burwell, NE.
- HART SHARPSHOOTER 069F has great extension with a smooth shoulder while possessing as much rib capacity, overall shape, clean in his lines and gets out and moves on a big solid foot. He is a powerful individual who excels in muscle mass and is just flat out what today's cattlemen are looking for!

HOMOZYGOUS BLK

HOMOZYGOUS PLD

LOT 28

Hart 321F

Homozygous Black Homozygous Polled Purebred

ASA#3411773 Tattoo: 321F Birth: 3-18-18
Act. BW: 87 Adj. WW: 832 WW Ratio: 110

DKSR Hollow Point C66 TNT Outlaw A316
KS Zahara Z710
Hart Lady Goldy W287 CCR Gold Fingers 0100P
Hart Ms. Crossfire T325

EPDs

CE	BW	WW	YW	ADG	MCE	MM	MWW	STAY	DOC	CWT	YG	MARB	BF	REA	API	TI
12	2.7	75	114	.25	5	23	61	17	13.1	21.1	-.46	.05	-.119	.65	127	73
Rank		25	20	20			25	20							30	

- Dams Ratios - BW 8@100, WW 8@100
 - Hart 165E, a Merritt son, made his way to a great program for Rick & Lisa Rau of Eureka, SD, in 2018.
 - Hart 225A, a JAX 28X son, was purchased by a fantastic repeat customer of Pat Knecht of Groton, SD.
 - Produced 2 replacement females.
- The Hollow Point sons have a real distinctive look all their own, but one thing is for sure they certainly put the emphasis on the growth department! Hart 321F is out of a Gold Finger dam that delivers excellence on all levels and packs a whollop into every baby she has. He is deep, stout and sound from the ground up, coupled with uniformity and balance that makes him genetically ideal for any cattle program.

HOMOZYGOUS PLD **HOMOZYGOUS BLK**

LOT 29

Hart Bulletproof 329F

Homozygous Black Homozygous Polled Purebred

ASA#3411579 Tattoo: 329F Birth: 3-19-18
Act. BW: 85 Adj. WW: 799 WW Ratio: 105

DKSR Hollow Point C66 TNT Outlaw A316
KS Zahara Z710
Hart Miss 0772 Dillons In Time
Hart Miss X736

EPDs

CE	BW	WW	YW	ADG	MCE	MM	MWW	STAY	DOC	CWT	YG	MARB	BF	REA	API	TI
8	2.4	71	109	.24	3	30	65	22	12.7	20.9	-.41	.18	-.108	.59	139	74
Rank		30	25			4	10	2	20			15			15	25

- Dams Ratios - WW 5@106
 - Produced 3 replacement females.
- Seedstock breeders, commercial cattle producers, ranchers that are looking for an investment that is bulletproof and will maximize your profits, look no further. He has the look, style, and function that we look for in herd bull prospects that will put a positive impact in your program for years to come. He combines an extra amount of depth, width and rib and carries all this on a big boned, sound structured set of feet and legs.

HOMOZYGOUS PLD **HOMOZYGOUS BLK**

Sons of QB Diesel D25

LOT 30

Hart Boost 306F

Homozygous Black Homozygous Polled Purebred

ASA#3411760 Tattoo: 306F Birth: 3-16-18
Act. BW: 87 Adj. WW: 891 WW Ratio: 117

EPDs																
CE	BW	WW	YW	ADG	MCE	MM	MWW	STAY	DOC	CWT	YG	MARB	BF	REA	API	TI
8	2.9	81	122	.26	5	19	60	15	12.5	40.9	-.39	-.19	-.117	.72	108	69
Rank		10	10	15	25			25	10							



HOMOZYGOUS BLK
HOMOZYGOUS PLD

- Dams Ratios - WW 4@107, YW 3@102
 - Hart 230E, Integrate son, made his home at the Steve Stoddard Ranch of Broadus, MT.
 - Produced 2 replacement females.
- Hart Boost 306F

QB Diesel D25 FBF1 Combustible
KnH Play On 458Z
Hart Miss 275A WLB Roughneck 366R 377W
Hart Miss Royal Flush S5

is a landmark bull that has been the buzz feed of conversation for everyone that has set eyes on this monster of a bull out of Diesel. There is no doubt that he absolutely crushes the scale at almost 900lbs and has that elite herd bull look with unmatched muscle shape, immense bone structure, remarkable chest depth and is complimented with a great big foot and leg combination. There is no question about his tremendous power and he will certainly take a good program into a great program!

Sons of Hart Merritt 155B

LOT 31

Hart 238F

Homozygous Black Homozygous Polled Purebred

ASA#3411720 Tattoo: 238F Birth: 3-8-18
Act. BW: 83 Adj. WW: 804 WW Ratio: 106

EPDs																
CE	BW	WW	YW	ADG	MCE	MM	MWW	STAY	DOC	CWT	YG	MARB	BF	REA	API	TI
11	1.9	73	116	.27	5	17	54	17	13.7	38.0	-.50	-.17	-.11	1.05	117	67
Rank		30	20	10	15			15	30	10						

- Dams Ratios - WW 7@100, YW 6@101
- Hart 258D, a Utah sale feature of 2017 went to work at a great program of Grant Gilchrist of Columbia, SD.
- Hart 176B out of Skors Black Enticer was purchased for fantastic set of females at the Kervin Olson Ranch of Amherst, SD.
- Hart 015Z, a Direct Force son worked hard at an impeccable program for Englehart Ranch of Barnard, SD.
- Produced 3 replacement females.

Nothing gets a breeders and purchasers blood pumping fast when they see impactful results in terms of moderate birthed calves that jump the gate and steadily gain at a fast rate giving you the satisfaction of making a perfect decision for your program. Hart 238F is out of a Wiseguy dam that has produced many sale features that have gone on to develop sons and daughters that are topping the markets year after year. Make a wise investment in a Merritt son and start to incorporate these fine genetics into your bottom line.

ASR Final Sort X0151
Hart Merritt 155B
Hart Miss X279
OLF Wiseguy S599
Hart Miss X225
Hart Lady Locator R290

HOMOZYGOUS PLD **HOMOZYGOUS BLK**

LOT 32

Hart 196F

Homozygous Black Homozygous Polled Purebred

ASA#3411603 Tattoo: 196F Birth: 3-2-18
Act. BW: 87 Adj. WW: 867 WW Ratio: 114

EPDs																
CE	BW	WW	YW	ADG	MCE	MM	MWW	STAY	DOC	CWT	YG	MARB	BF	REA	API	TI
11	3.3	76	126	.31	5	32	70	20	12.4	33.4	-.34	-.06	-.100	.58	126	71
Rank		20	4	2	2		1	20	25	30						

- Dams Ratios - WW 5@109, YW 2@107
 - Hart Custer 095E sale highlight from 2018 was purchased by Greg Shonka of Schulyer, NE, and Hart Simmentals who walked him in their pastures this spring!
- Hart 196F is the paternal 1/2 brother of Hart Custer 095F and when you get these 2 side by side and compare apples to apples, it is pretty plain that their IN TIME dam really does put all she has into her babies. Hart 196F is so dominant in his EPD profile that matches perfectly to him in person, has a near perfect foot with plenty of flex off all corners of his skeleton and has an abundance of muscle and body shape.



Hart Custer 095E, Maternal Brother

ASR Final Sort X0151
Hart Merritt 155B
Hart Miss X279
Hart In Time W095
Hart Miss 106Y
Hart Miss Club King W414

HOMOZYGOUS PLD **HOMOZYGOUS BLK**

Sons of Hart State Of War 056C



- Recommended Heifer Bull
- Grandams Ratios - BW 6@100
- Her 2018 sale feature sired by JS Belmont went to the Payden Dronen program at Steele, ND. Hart Front Line is a true product of a complete and proven calving ease program with multiple generations of influential, individuals that are producing winning results in the show ring like SUN STAR PAM 8F from the Sun Star Simmentals of Canada, a featured sale heifer in the 2018 Checkers Simmental Sale. Hart Front Line is a prime example of power mixing with calving ease in a smooth, effortless power, and extreme depth, attractive package. Begin your own highly successful calving ease program with a State of War son.



Hart Front Line 056F

Homozygous Black Homozygous Polled Purebred
 ASA#3411843 Tattoo: 056F Birth: 1-29-18
 Act. BW: 90 Adj. WW: 808 WW Ratio: 106

EPDs																
CE	BW	WW	YW	ADG	MCE	MM	MWW	STAY	DOC	CWT	YG	MARB	BF	REA	API	TI
11	2.1	83	119	.22	7	19	60	19	12.1	32.1	-.42	-.09	-.100	.82	127	74
Rank		4	15		25		25	20	30	35						25

Hart State Of War 056C
 Hart Miss 387Y

Welsh's Warsaw 312Z
 Hart Miss 102A
 WLB Roughneck 366R 377W
 Hart Subzero Lass R194



- Recommended Heifer Bull
- Grandams Ratios - BW 4@104
- Produced 2 replacement females. We were fortunate enough to have the opportunity to incorporate Hart State of War into our breeding program and was chosen to increase calving ease options. Since we raised him, we knew the huge potential he possess to sire low birth weight calves with the type of EPD profile that producers are seeking out. Hart Commander 052F is out of a HART ECLIPSE 510Y cow that hands down envelops what a superior dam should be! He has massive internal dimension, softness of body, overall length of spine, complimented with a great foot and leg combination built on a massive moderate frame. We personally believe these STATE OF WAR sons have a bright future ahead! **Hart Simmentals will retain 25% revenue sharing semen interest.**



Hart Commander 052F

Homozygous Black Homozygous Polled Purebred
 ASA#3411619 Tattoo: 052F Birth: 1-28-18
 Act. BW: 87 Adj. WW: 779 WW Ratio: 103

EPDs																
CE	BW	WW	YW	ADG	MCE	MM	MWW	STAY	DOC	CWT	YG	MARB	BF	REA	API	TI
12	1.7	80	117	.23	8	20	60	22	14.1	34.0	-.42	-.04	-.104	.81	135	74
Rank	25	10	15	35	15		30	3	10	25						20



Hart Eclipse 510Y, Grandsire

Hart State Of War 056C
 Hart Miss 119A

Welsh's Warsaw 312Z
 Hart Miss 102A
 Hart Eclipse 510Y
 Hart Miss Big Stuff N393



Hart War Cry 046F

Homozygous Black Homozygous Polled Purebred

ASA#3411789 Tattoo: 046F Birth: 1-27-18
Act. BW: 80 Adj. WW: 769 WW Ratio: 101

EPDs																
CE	BW	WW	YW	ADG	MCE	MM	MWW	STAY	DOC	CWT	YG	MARB	BF	REA	API	TI
14	2.1	81	113	.20	8	26	66	21	10.5	36.0	-.46	-.02	-.118	.86	136	75
Rank																
10		10	25		10	15	5	10		20					20	20

Hart State Of War 056C Welsh's Warsaw 312Z
Hart Miss 312A Hart Miss 102A
WLB Roughneck 366R 377W
Hart Lady Impact W490

- Recommended Heifer Bull
- Grandams Ratios - BW 4@100, WW 4@100
- Produced 2 replacement females.

This State of War bull calf is plum full of maternal stability and is sound to the ground, built on a



moderate frame. The Roughneck cow base has been a solid building block in our heard with many great females that hit every time. Hart War Cry has a near perfect structure coated with smooth muscle shape and structural integrity and sound on the move. We feel very proud that many other astute breeders are having success with State of War at the backbone of their heifer breeding program!



Hart State Of War 056C, Sire



Hart 036F

Homozygous Black Homozygous Polled Purebred

ASA#3411892 Tattoo: 036F Birth: 1-25-18
Act. BW: 87 Adj. WW: 772 WW Ratio: 102

EPDs																
CE	BW	WW	YW	ADG	MCE	MM	MWW	STAY	DOC	CWT	YG	MARB	BF	REA	API	TI
12	2.3	72	112	.25	7	29	65	24	10.4	35.3	-.44	-.13	-.102	.93	132	68
Rank																
25		35	25	20	25	4	10	1		20				30	30	

Hart State Of War 056C Welsh's Warsaw 312Z
Hart Miss 536Z Hart Miss 102A
New Trend Way Cool 6W
Hart Lady Nasdaq S329

- Dams Ratios - WW 5@105, YW 4@105
- Featured a Directive son in the 2015 bull sale that went to work at the Stacey Frericks program at Ashton, SD, and produced 3 replacement females. Hart State Of War 056C was purchased by the acclaimed McMillen Ranching LTD. of Carievale, SK, Canada, and SEMEX as a complete outcross calving ease herd sire. He is a total hit, siring nicely balanced deep sided sons and daughters that are going on to their own success and fame, such as the Erixon LADY 2F who was a class winner at the Canadian National Simmental Show. HART 036F claims a unique feature as he boasts one of our all-time favorite performance bulls on the dam side- NT WAY COOL 6W that came out of Canada! He sports an extremely deep chest floor that encompasses a crazy amount of dimension that extends into an explosive powerful hip and flank. We have just touched the tip of the iceberg as these STATE OF WAR stars gives us the first taste of what he can accomplish!!



Erixon Lady 2F, State Of War Daughter

Sons of HSR Power Plus D206



HOMOZYGOUS
BLK
HOMOZYGOUS
PLD

- Dams Ratios - BW 10@98, WW 10@109, YW 6@102
- Hart 327C, a Utah standout joined some steller females at the Homedale Cattle Co. of Eyota, MN.
- Hart 087A, a Wide Track bull from the 2014 sale went to great repeat customers of Melvin and Rick Rohrbach Family of Roscoe, SD.
- Produced 4 replacement females. This first offering of one of our newest herd sires-Power Plus, is everything we hoped that they would be. Hart 204F mimics Power Plus's full-blown power and has a fault free structure, heavy muscle with a ton of extension. We fully expect his sons to have his same athletic ability and breeding prowess and his daughters to produce the kind of market steers and replacements that hit at the top every year.

**LOT
37**

Hart 204F

Homozygous Black Homozygous Polled Purebred

ASA#3411815 Tattoo: 204F Birth: 3-3-18
Act. BW: 92 Adj. WW: 867 WW Ratio: 114

EPDs																
CE	BW	WW	YW	ADG	MCE	MM	MWW	STAY	DOC	CWT	YG	MARB	BF	REA	API	TI
4	3.8	80	120	.25	4	29	68	21	11.5	39.4	-38	-20	-.112	.70	112	67
Rank		10	10	20		10	2	4	35	10						

HSR Power Plus D206

Hart Cracker Barrel Lass

TJ Power Grid 363Y

HSR Ms. Rookie Z751

SVF Cracker Barrel L011

Hart Lady Premier M186



HOMOZYGOUS
BLK
HOMOZYGOUS
PLD

- Dams Ratios - BW 7@102, WW 7@103, YW 5@106
- Hart Ground Load 085E a Merritt son standout sale highlight from 2018 made his way to the prominent Gilliland Livestock Inc. of Davis, CA. Her Hart Merritt 155B sensational standout was kept by our program and has produced whoopers like Hart Ground Load 085E.
- Hart 230C went to Nathan Wipf of Frankfurt, SD, in 2016. In every sire group you have individuals that rise to the top and have something just a little bit more special than his siblings, the Power Plus bulls in the sale are all so similar in makeup, style, substance and presence it will prove to be a difficult choice to which one is the better one. Hart Power Surge 155F is an over achiever that has huge potential ahead of him and is the kind of bull that the most critical of bull buyers will drive the wheels off their pickups to find. Phenotypically he is an absolute truck with tremendous body mass, natural depth and thickness and is structurally sound from the ground up!

**LOT
38**

Hart Power Surge 155F

Homozygous Black Homozygous Polled Purebred

ASA#3411763 Tattoo: 155F Birth: 2-23-18
Act. BW: 92 Adj. WW: 920 WW Ratio: 121

EPDs																
CE	BW	WW	YW	ADG	MCE	MM	MWW	STAY	DOC	CWT	YG	MARB	BF	REA	API	TI
7	3.6	89	139	.31	5	26	70	22	12.6	52.3	-.34	-.01	-.092	.90	132	78
Rank		2	1	2		20	2	3	25	1				35	30	10



Hart Merritt 155B, ??



Hart Ground Load 085E,
Maternal Brother

HSR Power Plus D206

Hart Miss X279

TJ Power Grid 363Y

HSR Ms. Rookie Z751

Dillons In Time

Hart Ms. Crossfire U569



Hart Live Wire 132F

Homozygous Black Homozygous Polled Purebred

ASA#3411707 Tattoo: 132F Birth: 2-15-18
Act. BW: 92 Adj. WW: 810 WW Ratio: 107

EPDs																
CE	BW	WW	YW	ADG	MCE	MM	MWW	STAY	DOC	CWT	YG	MARB	BF	REA	API	TI
8	3.0	79	126	.29	6	27	66	20	11.0	33.3	-.31	-.02	-.084	.63	126	73
Rank																
		10	4	4	35	15	4	20				30				30

HSR Power Plus D206

TJ Power Grid 363Y

Hart Miss 205A

HSR Ms. Rookie Z751

JF Real World 050X

Hart Miss New Design 537

- Dams Ratios - BW 4@102, WW 4@100, YW 2@106
- Her Warsaw sale feature from 2016 went to service for the Howard and Jeff Bohr Farms of Wellman, IA.
- Produced 1 replacement female.

Hart Live Wire 132F is a Power Plus bull who encompasses a wealth of reputable genetics and phenotypic assets to offer everything even the most critical of cattlemen. His dam is a beautiful Real World daughter that has made a very impactful start doing a beautiful job for us and boasts the kind of udder that every female should possess! As you can tell from Live Wire's photo that he is very clean in his front end and has that picture-perfect smoothness of muscle that compliments his flashy eye-catching angles and really modern look from every direction your eyes land. He has an incredible amount of length of body that is he carries effortlessly with his fantastic stature, very large feet and great leg structure.



Hart 141F

Heterozygous Black Homozygous Polled Purebred

ASA#3411837 Tattoo: 141F Birth: 2-21-18
Act. BW: 90 Adj. WW: 878 WW Ratio: 116

EPDs																
CE	BW	WW	YW	ADG	MCE	MM	MWW	STAY	DOC	CWT	YG	MARB	BF	REA	API	TI
8	3.8	80	125	.28	6	25	65	16	10.1	49.8	-.35	-.10	-.093	.89	113	71
Rank																
		10	5	10	35	20	10				1					35

HSR Power Plus D206

TJ Power Grid 363Y

Hart Miss Z377

HSR Ms. Rookie Z751

BF L112 Trailblazer

Hart Miss Perfector T244

- Dams Ratios - BW 7@100, WW 7@107
- Her Patch sale highlight form 2018 went to Rex Nelson of Batesland, SD.
- Produced 4 replacement females.

Power Plus is one of our newest performance herd sire that showcases progeny that have explosive gain ability and makes us very excited for his future, it sure does look promising! Hart 141F has three dimensional muscle shape, extra linear expression and superb balance. If you have a set of females that need more length or to input more muscle and structural correctness this guy will fill those shoes!



Sons of JBS Single Shot 601C



Hart 219F

Homozygous Black Homozygous Polled Purebred

ASA#3411751 Tattoo: 219F Birth: 3-5-18
Act. BW: 92 Adj. WW: 858 WW Ratio: 113

EPDs																	
CE	BW	WW	YW	ADG	MCE	MM	MWW	STAY	DOC	CWT	YG	MARB	BF	REA	API	TI	
5	5.3	90	134	.27	2	17	62	15	11.4	39.8	-.41	-.01	-.108	.82	112	75	
Rank																	
		1	2	10				15				10					20

JBS Single Shot 601C

Gibbs 0689X Crimson Tide

Hart Miss 260C

JBS Miss G Design 4255

RS&T Shocking Rare A310

Hart Miss 072A

- Dams Ratios - WW 2@107

With Rich & Rare being the grandam on the paternal side is surely a key factor for his sheer mass and big bone, ideal in his structure and impressive from every angle. Hart 219F is one of the bigger built, longer bodied bulls in the offering and may be the biggest statured bull in this division.





Hart Prime 017E, Maternal Brother



LOT 42

Hart Proud 343F

Homozygous Black Homozygous Polled Purebred

ASA#3411595 Tattoo: 343F Birth: 3-21-18

Act. BW: 87 Adj. WW: 914 WW Ratio: 114

EPDs																
CE	BW	WW	YW	ADG	MCE	MM	MWW	STAY	DOC	CWT	YG	MARB	BF	REA	API	TI
8	4.9	93	146	.33	5	20	66	12	13.1	34.7	-.46	.04	-.114	.88	117	80
Rank		1	1	1			5		20	25						10

JBS Single Shot 601C Gibbs 0689X Crimson Tide

JBS Miss G Design 4255

Hart Miss 098C

GLS Integrate Z3

Hart Miss Limit Up S195

- Dams Ratios - WW 2@118, YW 1@111
- Hart Prime 017E our 2018 True Justice sale topper went to service an impressive set of females at the Emmons Black Simmental Ranch of Olive, MT.

This will be this young Integrate daughter's second bull in the two short years that she has been in service and without a doubt is making her stand to be one of our absolute greatest females in our arsenal.

*Her first True Justice son- Hart Prime 017E was a man among men and when the gavel sounded at the end, he wound up as our high selling bull at \$19,000 to Emmons Black Simmental Ranch at Olive MT and is Proud's half-brother. When Hart Proud hit the ground, dad knew immediately that he was going to be a special one and has watched him with awe as he has matured into the stud you see before you! He has a star-studded pedigree with an exceptional EPD profile that is so impressive on paper, but when you see him in person your heart skips a beat with overwhelming excitement. He has it all: numbers, growth, quality, structure, uniformity, dimension that is blended into one perfect weapon for his new owners! **Hart Simmentals is retaining 25% revenue in semen rights share.***



LOT 43

Hart 261F

Homozygous Black Homozygous Polled Purebred

ASA#3411724 Tattoo: 261F Birth: 3-11-18

Act. BW: 78 Adj. WW: 828 WW Ratio: 109

EPDs																
CE	BW	WW	YW	ADG	MCE	MM	MWW	STAY	DOC	CWT	YG	MARB	BF	REA	API	TI
12	1.6	75	113	.24	6	212	59	16	9.3	41.5	-.44	.07	-.096	1.03	129	74
Rank		25	25	20	25			35		10		35		15	35	25

JBS Single Shot 601C Gibbs 0689X Crimson Tide

JBS Miss G Design 4255

Hart Miss 228B

JF Made In America 210Z

Hart Miss 493Y

- Dams Ratios - BW 3@109, WW 3@106
- Hart 197E, Integrate son sale feature from 2018 went to new customer Loren Duchsherer of Balfour, ND.
- Produced 1 replacement female.

Hart 261F has all kinds of breeding potential in his diverse, unlimited, powerful genetic makeup. He is a herd bull prospect that blends a wicked phenotype with loads of added rib shape, tons of mass and muscle that is shown in a refined, dynamic eye appealing package.



Hart 197E, Maternal Brother





Hart Hot Shot 199F

Heterozygous Black Homozygous Polled 3/4 SM

ASA#3411651 Tattoo: 199F Birth: 3-2-18
Act. BW: 87 Adj. WW: 843 WW Ratio: 111

EPDs																	
CE	BW	WW	YW	ADG	MCE	MM	MWW	STAY	DOC	CWT	YG	MARB	BF	REA	API	TI	
10	2.6	72	106	.21	4	27	63	14	11.4	37.0	-44	.03	-.091	1.04	105	66	
Rank		25	35				15	10			25	5	10		3		

Gibbs 0689X Crimson Tide
JBS Single Shot 601C
JBS Miss G Design 425S
AJE/HS/MBCC Outlook
Hart Miss 150A
Hart Lady Goldy U259

- Dams Ratios - BW 4@101, WW 4@106
- A Warsaw sale feature from 2018 went to Mike Roesch of Roscoe, SD.
- Her True Justice bull from the 2017 sale was purchased and sent to work on a great set of females at the Mike Roesch Ranch of Roscoe, SD.

When you put on as many miles as we do every year in search of the perfect genetics to match our perspective of the finest genetics, that does not go back to our lineage quite often poses a difficult challenge and your only option may be a 3/4 blood bull. JBS Single Shot emanated the qualities we strive for in a herd bull prospect and we were foreseeing to opportunities that his offspring may afford, brought him to Frederick! Hot Shot showcases a sleek line front end blowing out into an extreme rib

depth that keeps going right into a massively muscled back quarter and stands on a solid foundation of a great leg structure on a very big hoof.



Hart Flint 145F

Homozygous Black Homozygous Polled Purebred

ASA#3411929 Tattoo: 145F Birth: 2-22-18
Act. BW: 92 Adj. WW: 812 WW Ratio: 107

EPDs																	
CE	BW	WW	YW	ADG	MCE	MM	MWW	STAY	DOC	CWT	YG	MARB	BF	REA	API	TI	
9	4.5	82	127	.28	4	21	62	16	10.9	41.3	-50	.00	-.107	1.14	120	73	
Rank		10	4	10				15			10	30	4		30		

Gibbs 0689X Crimson Tide
JBS Single Shot 601C
JBS Miss G Design 425S
Triple C Agility U48R
Hart Miss X692
Hart Lady Contender T227

- Dams Ratios - BW 7@100, WW 7@102, YW 4@104
- Her Made In America bull form 2015 went to repeat customer Neal Vohs of Paola, KS.
- Produced 4 replacement females. Hart Flint 145F is an easy fleshing Single Shot son that has that extra pizzazz, grabbing your attention with his great profile and impressive EPD data! He is perfect throughout his shoulder area, stout and powerful down his top line, robust middled with a massive hind quarter. He is out of a Triple C Agility daughter that is without a doubt the deepest bodied cow we have raised to date.



Sons of SFI Enough Said D3

LOT 46

Hart Bourbon 100F

Heterozygous Black Homozygous Polled Purebred

ASA#3411517 Tattoo: 100F Birth: 2-5-18
Act. BW: 92 Adj. WW: 913 WW Ratio: 120

EPDs																
CE	BW	WW	YW	ADG	MCE	MM	MWW	STAY	DOC	CWT	YG	MARB	BF	REA	API	TI
6	2.9	81	118	.23	4	24	65	23	9.9	18.9	-.53	-.12	-.117	.85	126	71
Rank		10	15	35	30			10	1	20						

SFI Enough Said D3

CCR Cowboy Cut 5048Z

SFI Miss Too Sweet N85K

RS&T American Girl 1Y

FBFS Vantage Point 021S

JDJ Rich And Rare 12S



• Dams Ratios - BW 5@103, WW 5@100
"EVERY HERD NEEDS A SHOT OF BOURBON", and this fault free behemoth is 100% proof perfect in every way!!! From day one this big guy was so completely special, exemplifying tremendous power and has caught the eye of every single person that has been thru our place. Every key component needed to produce impeccable progeny is highly elevated to the extremes on this guy. Bourbon is so very impressive in terms of base width, massive internal dimension, very pronounced large testicular development. As you analyze him closer, the sheer amount of volume this beast possesses, along with his undeniable elite herd bull look to him makes Bourbon and absolute monster power bull and he will quickly elevate your cattle in a short order! Dad named this bull calf the 2nd day after he hit the ground running and has been crazy fired up about him and can't help but sing his praise! This complete outcross bull is so perfect in his skeletal design with great extension topping it off with super superior set of big feet and legs and is going to set this breed on its ear!! We will definitely be using him hard in our next year's breeding program! **Hart Simmentals will be retaining a 25% revenue sharing semen interest.**

HOMOZYGOUS
PLD



SFI Enough Said D3, Sire



HOMOZYGOUS
BLK
HOMOZYGOUS
PLD

LOT 47

Hart Complete 104F

Homozygous Black Baldy Homozygous Polled Purebred

ASA#3411761 Tattoo: 104F Birth: 2-6-18
Act. BW: 92 Adj. WW: 842 WW Ratio: 111

EPDs																
CE	BW	WW	YW	ADG	MCE	MM	MWW	STAY	DOC	CWT	YG	MARB	BF	REA	API	TI
7	2.6	70	104	.21	5	30	65	17	10.8	28.8	-.41	.13	-.108	.71	124	72
Rank		4	10				25			35						

SFI Enough Said D3

CCR Cowboy Cut 5048Z

SFI Miss Too Sweet N85K

Hart Miss X278

RFS Direct Force T19

Hart Lady Nasdaq P390



• Dams Ratios - WW 6@108, YW 4@101
• Produced 2 sale standout bulls and 2 replacement females.

HART COMPLETE 104F is exactly that - COMPLETE, with his eye-catching blaze faced pattern and unique style that really brings your eye in and makes you want to study him more. He has impeccable structure and carries his abundance of muscle mass and rib shape effortlessly. Made in the same likeness of ENOUGH SAID with almost the same markings, COMPLETE sets himself apart with excellent length and extension!

HART SIMMENTALS
Power Bull Sale



Hart 086F

Homozygous Black Baldy Homozygous Polled Purebred

ASA#3411598 Tattoo: 086F Birth: 2-3-18

Act. BW: 80 Adj. WW: 811 WW Ratio: 107

EPDs																
CE	BW	WW	YW	ADG	MCE	MM	MWW	STAY	DOC	CWT	YG	MARB	BF	REA	API	TI
10	2.5	77	112	.22	7	24	63	24	11.8	19.4	-.53	.02	-.112	.91	137	73
Rank		20	25	30	30	15	1	35		20				30	20	30

SFI Enough Said D3

CCR Cowboy Cut 5048Z

SFI Miss Too Sweet N85K

Hart Ms. Ranchhand U100

Sand Ranch Hand

Hart Miss Lewy N153

- Dams Ratios - BW 9@102, WW 9@102, YW 8@100
- This cow making machine has produced 8 replacement females and they have produced standouts in their own right.

Pure cow power best describes HART MS RANCHHAND U100, she is an exceptional, heavy milking, tremendously powerful dam that always gives us her best year after year! This is the 2nd of only 3 SFI ENOUGH SAID bull calves that give us an abundance of genetic assurance to impact any program in the right direction. We appreciate HART 086F's overall strength, performance filled pedigree and style, displaying great depth, eye appeal, along with a superb leg structure and big foot! He has a tiny bit of white on his two back feet, you can't see it in the pictures, but when they are this great, you can't but overlook this and find all of the genetic greatness!



Sons of Hart Frisky Whiskey 010C



Hart Frisky Whiskey 010C, Sire



Hart 113F

Homozygous Black Homozygous Polled Purebred

ASA#3411870 Tattoo: 113F Birth: 2-8-18

Act. BW: 90 Adj. WW: 893 WW Ratio: 118

EPDs																
CE	BW	WW	YW	ADG	MCE	MM	MWW	STAY	DOC	CWT	YG	MARB	BF	REA	API	TI
7	2.8	75	106	.19	4	27	64	18	11.0	22.3	-.51	.04	-.115	.87	122	72
Rank		20	35			15	10				25					35

Hart Frisky Whiskey 010C

W/C Utah 534A

Hart Miss 385A

Hart Miss 474Z

JF Real World 050X

Hart Lady Locator S569



- Dams Ratios - WW 5@110
- Hart 253C, Ridgerider son, was a standout in the 2016 sale went to service an outstanding set of females at the Neal Vohs Ranch of Paola, KS.
- Produced 2 replacement females.

Frisky Whiskey was one of those bull calves that we just knew from early on he was going to be a great addition to someone's breeding program, Todd O'Bryan was that lucky person who saw his potential. We put some of his semen into production this year, hoping we would be blessed a second time, and boy were we ever! As you study all of Hart 113F's phenomenal qualities, his sheer body mass is the very first thing that grabs your attention. His actual weight as of Oct. 1st was 1,000lbs. on the nuts, it blew us away!! His Real World dam is one of our favorite cows and really leaves all she has in her babies! You really can appreciate the amount of chest floor depth and power this bull carries it isn't hard to see that he will definitely knock out some super tremendous sons and daughters that will really add those pounds at weaning time, we just wish we had more of them to offer!

Sons of Hart Genuine 038A



Hart 092F

Homozygous Black Homozygous Polled Purebred

ASA#3411816 Tattoo: 092F Birth: 2-4-18
Act. BW: 85 Adj. WW: 801 WW Ratio: 106

Hart Genuine 038A

ES Ridgerider YW3
Hart Miss 129Y

Hart Ms. Royalflush U355

KWF Royal Flush M8
Hart Frontman Lass R327

- Dams Ratios - WW 9@103, YW 5@108
- Her Agility standout of 2012 went to service a fantastic set of females at the Mike Roesch Ranch of Roscoe, SD.
- Produced 4 Replacement females.

We were finally blessed with the opportunity to be able to breed our cows back to our own famed HART GENUINE 038A who was sold back in 2014 to Circle S Simmentals and Nichols Farms of Ohio for \$39,000. Every producer respects the decisions of their customers who want to keep the genetics that they have purchased to strictly their program, it is a testament that they believe in our product that much, what an honor! HART 092F has an eye catching look, a tremendous length of spine, extra dimension, and the look of a true herd bull that moves with ease and flexibility.

EPDs																
CE	BW	WW	YW	ADG	MCE	MM	MWW	STAY	DOC	CWT	YG	MARB	BF	REA	API	TI
7	3.8	75	113	.24	5	30	67	22	14.8	21.3	-.46	-.13	-.116	.68	120	67
Rank																
25			25			25			4		4		2		10	



Hart Genuine 038A, Sire



Hart 098F

Homozygous Black Homozygous Polled Purebred

ASA#3411839 Tattoo: 098F Birth: 2-5-18
Act. BW: 92 Adj. WW: 784 WW Ratio: 103

EPDs																
CE	BW	WW	YW	ADG	MCE	MM	MWW	STAY	DOC	CWT	YG	MARB	BF	REA	API	TI
7	3.6	74	106	.20	6	24	61	17	17.2	12.7	-.40	-.06	-.088	.60	112	67
Rank																
30						25			20		1					

Hart Genuine 038A

ES Ridgerider YW3
Hart Miss 129Y

Hart Sweet X-Rated W379

SAS T101 Sweet Meat
Hart Miss Irish K108

If you are looking for a herd sire to add performance, deepness, structural soundness and ease of movement, then the Genuine bulls will definitely fit your bill. Hart 098F puts disposition, length of spine, depth of body, super agility and distinct muscle mass into just the right type of complete and exceptionally balanced package.



Hart 079F

Homozygous Black Homozygous Polled Purebred

ASA#3411875 Tattoo: 079F Birth: 2-3-18
Act. BW: 87 Adj. WW: 769 WW Ratio: 101

EPDs																
CE	BW	WW	YW	ADG	MCE	MM	MWW	STAY	DOC	CWT	YG	MARB	BF	REA	API	TI
8	3.9	66	97	.19	5	32	65	19	10.8	12.3	-.44	-.09	-.090	.73	114	63
Rank																
2			10			25										

Hart Genuine 038A

ES Ridgerider YW3
Hart Miss 129Y

Hart Ms. Dreammaker U489

TMPF Dream Maker
Hart Miss Paramount P231

- Dams Ratios - WW 9@104, YW 6@100
- Her Final Sort 2015 sale feature works very hard for the Scott Braun Ranch of Ipswich, SD.

• Another standout made his way to the John Berdo Ranch of Washington, IA., her Goldmine bull from 2011 went to work for Dale Holt of Cresbard, SD, and produced 3 replacement females. Our first HART GENUINE 038A calves came with a ton of promise, super easy calving with and immense amount of style and structural correctness and soundness. HAR 079F has and extreme amount of maternal strength behind him and he himself has the overall balance to sire offspring that are robust, deep bodied, big topped, super functional with unbeatable disposition.

Sons of DJF Trademark D634



Hart Benchmark 002F

Homozygous Black Homozygous Polled Purebred

ASA#3411784 Tattoo: 002F Birth: 1-15-18
Act. BW: 78 Adj. WW: 835 WW Ratio: 110

DJF Trademark D634 TJ Makers Mark 215Y
Double J Miss Z282
Hart Miss 306D BBS True Justice B10
Hart Miss 207Z

- Out of a first calf heifer.
 - Recommended Heifer Bull
 - Grandams Ratios - BW 5@100, WW 5@103, YW 2@108
- The first crop of Trademark babies came just like we hoped,

EPDs																
CE	BW	WW	YW	ADG	MCE	MM	MWW	STAY	DOC	CWT	YG	MARB	BF	REA	API	TI
13	2.3	91	141	.32	8	24	69	20	13.3	25.1	-.34	.17	-.071	.72	149	86
Rank																
15		1	1	1	10	30	2	20	15		20				4	1



problem free and moderate birthed, tons of vigor, and major performance!! HART BENCHMARK 002F is a salty, stout, smooth fronted bull that sets the bar high with his EPD stacked profile and his combination of power, muscle definition and elite structural capacity and soundness. This is certainly a feather in this young True Justice heifer's cap and we are excited about her and Trademark's futures here in this program and expect them to have a long and memorable career.



Hart 125F

Homozygous Black Homozygous Polled Purebred

ASA#3411725 Tattoo: 125F Birth: 2-12-18
Act. BW: 74 Adj. WW: 791 WW Ratio: 104

DJF Trademark D634 TJ Makers Mark 215Y
Double J Miss Z282
Hart Miss 229D Welsh's Warsaw 312Z
Hart Miss X751

EPDs																
CE	BW	WW	YW	ADG	MCE	MM	MWW	STAY	DOC	CWT	YG	MARB	BF	REA	API	TI
12	2.1	79	116	.23	7	24	64	20	10.5	13.2	-.30	.01	-.068	.47	132	74
Rank																
30		15	15	35	25	30	10	15							30	25

- Out of a first calf heifer.
- Recommended Heifer Bull
- Ridgerider bull was purchased by the Neal Vohs Family from Paola, KS, in 2016.
- Produced 3 replacement females.

Hart 125F sports a very low birth weight due to being double bred calving ease from Warsaw and Trademark, both known for their sleep easy calving proven capabilities! He is packed full of smooth muscle mass, really streamline moderate body style and will be a unique breeding instrument for a super set of flashy replacement females and that scale crushing weight that Warsaw and Trademark are known for.



Hart 117F

Heterozygous Black Homozygous Polled Purebred

ASA#3411568 Tattoo: 117F Birth: 2-8-18
Act. BW: 76 Adj. WW: 822 WW Ratio: 108

DJF Trademark D634 TJ Makers Mark 215Y
Double J Miss Z282
Hart Miss 066D Mr. MLH Directive 19Z
Hart Miss 151B

EPDs																
CE	BW	WW	YW	ADG	MCE	MM	MWW	STAY	DOC	CWT	YG	MARB	BF	REA	API	TI
12	2.2	87	131	.27	7	20	63	20	9.4	27.9	-.41	-.16	-.089	.83	126	75
Rank																
30		2	3	10	30		15	20								20

- Out of a first calf heifer.
 - Grandams Ratios - BW 3@102, WW 3@103, YW 2@104
- Well the end result from Trademark's first year here has been very impressive with both the quality of the physical traits and the super explosive EPD range! We think when you scrutinize over these bulls in person that you will find they are all stamped with the same ultimate blend of growth, but each offer some small variations of body style and uniqueness. Hart 117F has been a stud since birth and improves and changes daily, visualize the impact this guy will make into a breeding program.





Hart 122F

Heterozygous Black Baldy Homo. Polled Purebred

ASA#3411680 Tattoo: 122F Birth: 2-11-18
Act. BW: 78 Adj. WW: 822 WW Ratio: 108

EPDs																	
CE	BW	WW	YW	ADG	MCE	MM	MWW	STAY	DOC	CWT	YG	MARB	BF	REA	API	TI	
10	3.1	88	135	.29	6	22	65	19	10.5	31.2	-.36	.06	-.093	.69	135	80	
Rank		2	2	4	30	10		25								20	10



DJF Trademark D634 TJ Makers Mark 215Y
 Double J Miss Z282
 Hart Miss 188D SVF Z47 Patch
 Hart Miss 503Y

- Out of a first calf heifer.
- Grandams Ratios - BW 4@100, WW 4@102, YW 3@100
- Her red All-Around from 2015 went to work on the Emery Ranch of Frederick, SD. Produced 2 replacement females. Every trial of breeding variation we tried with Trademark was a complete homerun, he truly has many facets when it comes to pairing him with any style of female you have. All the Trademark calves came unassisted, averaging 80lbs across the boards and hit the ground running! Hart 122F is fault free from head to toe, attractive from every angle and excels in every relevant trait for high earning beef production. He is deep bodied, tremendously thick made, sound down to the ground- everything that is necessary for durability and longevity out in your pasture!



Hart 032F

Homozygous Black Homozygous Polled Purebred

ASA#3411620 Tattoo: 032F Birth: 1-24-18
Act. BW: 78 Adj. WW: 816 WW Ratio: 108

EPDs																		
CE	BW	WW	YW	ADG	MCE	MM	MWW	STAY	DOC	CWT	YG	MARB	BF	REA	API	TI		
13	1.7	83	125	.26	9	16	57	21	13.0	20.3	-.45	.05	-.097	.79	141	78		
Rank		20	5	5	15	10	10		20								15	10

DJF Trademark D634

TJ Makers Mark 215Y
 Double J Miss Z282
 BBS True Justice B10
 Hart All Beef Lass T273

Hart Miss 120D

- Out of a first calf heifer.
- Recommended Heifer Bull
- Grandams Ratios - BW 7@101, WW 7@100
- Produced 6 replacement females.

Hart 032F is another Trademark standout that is loaded with muscle and rib shape plus he combines this with a high caliber EPD profile! We take pride in the fact that we produce bulls that will raise great calves of both sexes, and our heifers are just as stout and powerful as our bull calves. Having proven maternal traits on this bull's dams side means you will have consistent, high performance replacements as well as scale busting steers.



Hart 108F

Homozygous Black Homozygous Polled Purebred

ASA#3411685 Tattoo: 108F Birth: 2-7-18
Act. BW: 83 Adj. WW: 779 WW Ratio: 103

EPDs																
CE	BW	WW	YW	ADG	MCE	MM	MWW	STAY	DOC	CWT	YG	MARB	BF	REA	API	TI
9	2.6	88	133	.28	6	17	61	20	10.9	29.6	-.32	.12	-.077	.67	138	81
Rank		2	2	10	20		15						25	15		5

DJF Trademark D634

TJ Makers Mark 215Y
 Double J Miss Z282
 WS All-Around Z35
 Hart Miss 494Y

Hart Miss 191D

- Dams Ratios - WW 4@103, YW 3@104

Hart 108F is a huge performing son out of Trademark that has a tremendous amount of center and is just so powerful from every angle and yet flexes off every joint with precision! He offers an enormously outstanding genetic and EPD profile, but is even more impressive in the flesh and has a lot to offer any seed stock producer or commercial cattle breeder.



Sons of R&R Platinum D135



Hart 325F

Homozygous Black Homozygous Polled Purebred

ASA#3411923 Tattoo: 325F Birth: 3-18-18
Act. BW: 85 Adj. WW: 802 WW Ratio: 106

EPDs																
CE	BW	WW	YW	ADG	MCE	MM	MWW	STAY	DOC	CWT	YG	MARB	BF	REA	API	TI
7	3.3	62	92	.19	4	27	58	19	9.1	31.4	-.55	-.11	-.188	1.09	109	60
Rank							10	35					10	10		

R&R Platinum D135

Profit
 R&R Tyra Y135
 KWF Royal Flush M8
 Hart Lady Festus J273

Hart Ms. Royalflush U658

- Dams Ratios- WW-8@100
 - A Triple C Agility son, Hart 228Y, worked very hard for Dale Pitzel of Eden, SD in 2012.
 - Produced 5 replacement females.
- Lets take a look at all of the factors that make this Platinum herd bull prospect a unique breeding machine. He has a moderate birth weight, compounded by an impressive weaning weight along with a very different pedigree, backed by a highly maternal Royal Flush dam that proves that longevity is definitely a driving force in her DNA.



Sons of R&R Platinum D135



Hart Sport 206F

Homozygous Black Homozygous Polled Purebred

ASA#3411597 Tattoo: 206F Birth: 3-4-18

Act. BW: 76 Twin Adj. WW: 779 WW Ratio: N/A

EPDs																
CE	BW	WW	YW	ADG	MCE	MM	MWW	STAY	DOC	CWT	YG	MARB	BF	REA	API	TI
12	1.1	60	86	.16	6	33	63	14	10.5	23.3	-.47	-.07	-.100	.87	112	64
Rank		25		35		35		1		15						

Profit

R&R Platinum D135

R&R Tyra Y135

SS/PRS High Voltage 244X

SNF Prima Donna A-100

KCC Bell's Image

• Dams Ratios - BW 3@104,
WW 3@109, YW 2@105

• Hart Made To Order 018D, a WIC Executive Order son, standout sale feature went to service at the Todd O'bryan Ranch of Kyle, SD.

Hart Mega Watts 019C, who has been turning out astute heifer bull prospects like Hart 022F, Hart Blackout 024F, Hart Transformer 030F, Hart 031F, Hart Conductor 040F, Hart 075E.

Hart Sport is exactly what his name implies- sporty, flashy, streamline, arrow dynamic, zipper fronted with seamless extension of his neck to the top of his shoulder, blending into a perfect balance of power and refinement, extremely unique and his twin sister is made the same way! Platinum was brought here to build individuals that have a different style of power in their body style and stature. We are well known for our ability to provide our customers with herd bull prospects that highly excel in the weight, muscle mass, extension and added frame department but are always trying to bring new traits that offer different varieties to the table and Platinum fit that bill.



Hart Made To Order 018D, Maternal Brother



Hart Mega Watts 019C, Maternal Brother



Hart Iron Rod 316F

Homozygous Black Homozygous Polled Purebred

ASA#3411838 Tattoo: 316F Birth: 3-17-18

Act. BW: 87 Adj. WW: 825 WW Ratio: 109

EPDs																
CE	BW	WW	YW	ADG	MCE	MM	MWW	STAY	DOC	CWT	YG	MARB	BF	REA	API	TI
7	2.2	58	87	.18	5	30	59	17	10.0	8.2	-.48	-.02	-.106	.65	111	62
Rank		4		30												

Profit

R&R Platinum D135

R&R Tyra Y135

Hart Eclipse 510Y

Hart Miss 378A

JDJ Rich And Rare 12S

• Dams Ratios - WW 4@108,
YW 3@107

• Hart Hitman, a Hollow Point barn burner bull, was a sale highlight from 2018.

• Produced 2 replacement females.

Here is one of those embryo flush mate full sisters that we keep bragging about and for good reason, they flat out produce the kind of herd bulls that accomplish what others cannot. Hart Miss 378A hit a huge home run last year with Hart Hitman 184E and she just knocked it out of the park once again with Hart Iron Rod, who struck with lightning performance capabilities where sound numbers meet supreme phenotype. He is very smooth made, comes out of his shoulder with a proud and correct neck and head that blends perfectly into this magnificent specimen with all the bells and whistles to be a true breed changer.



Hart Hitman 184E, Maternal Brother

This sale will be broadcast live on the internet!

DVAuction
Broadcasting Real-Time Auctions

Sons of Welsh's Warsaw 312Z

LOT 62

Hart 010F

Homozygous Black Homozygous Polled Purebred
 ASA#3411749 Tattoo: 010F Birth: 1-19-18
 Act. BW: 78 Adj. WW: 845 WW Ratio: 111

EPDs																	
CE	BW	WW	YW	ADG	MCE	MM	MWW	STAY	DOC	CWT	YG	MARB	BF	REA	API	TI	
10	1.9	84	119	.21	5	22	65	20	11.0	43.9	-.33	-.13	-.100	.70	124	73	
Rank										4	15	10	15	4	30		



HOMOZYGOUS BLK
HOMOZYGOUS PLD

FBFS Warsaw 068W
 Welsh's Warsaw 312Z
 Welshs Rosie 102W
 WS All-Around Z35
 Hart Miss 256D
 Hart Ms. Trailblazer W383

- Out of a first calf heifer.
- Recommended Heifer Bull
- Grandams Ratios - BW 5@101

Predictability and consistency are what come to mind when talking about Warsaw's performance here, year after year. He offers such a diverse breeding scope and continues to maintain his impeccable calving ease production. Hart 010F complies smooth shoulder definition from his neck extension & extremely smooth muscle throughout his entire skeletal structure. This bull checks all the boxes and exhibits all of the same stellar attribute as Warsaw.

LOT 63

Hart 258F

Homozygous Black Homozygous Polled Purebred
 ASA#3483233 Tattoo: 258F Birth: 3-11-18
 Act. BW: 85 Adj. WW: 834 WW Ratio: 105

Welsh's Warsaw 312Z

FBFS Warsaw 068W

Welshs Rosie 102W

Hart Miss 026C

RS&T Shocking Rare A310

Hart Miss 191A

EPDs																
CE	BW	WW	YW	ADG	MCE	MM	MWW	STAY	DOC	CWT	YG	MARB	BF	REA	API	TI
9	2.6	81	107	.17	5	13	53	18	12.1	28.8	-.34	-.10	-.093	.67	116	70
Rank										10	35	30				

- Dams Ratios - BW 2@106, WW 2@104

This very dominating Warsaw son is a long as a truck, soggy, deep ribbed, easy fleshing bull out of a very young Shocking Rare daughter that is starting off her path in a very positive light. Hart 258F will add loads of style, balance, function and pounds which equals heavy pockets at sale time!

HOMOZYGOUS PLD
HOMOZYGOUS BLK

LOT 64

Hart 013F

Homozygous Black Homozygous Polled Purebred
 ASA#3411721 Tattoo: 013F Birth: 1-20-18
 Act. BW: 78 Adj. WW: 805 WW Ratio: 106

Welsh's Warsaw 312Z

FBFS Warsaw 068W

Welshs Rosie 102W

Hart Miss 227D

WS All-Around Z35

Hart Miss Power Drive S3

EPDs																	
CE	BW	WW	YW	ADG	MCE	MM	MWW	STAY	DOC	CWT	YG	MARB	BF	REA	API	TI	
9	1.2	78	107	.18	5	25	64	21	12.1	17.4	-.37	-.15	-.107	.43	122	70	
Rank										15	35	25	10	4	30		

- Out of a first calf heifer.
- Recommended Heifer Bull
- Grandams Ratios - BW 10@101, WW 10@103

Here is the same quality combination of Warsaw and All-Around as Hart 010F and this big guy is loaded with the same great attributes on both sides of his pedigree. If you factor in his grand dams solid performance throughout her years, we feel this Warsaw son will carry on her performance and exceed ours and your expectations.

HOMOZYGOUS PLD
HOMOZYGOUS BLK

LOT 65

Hart 376F

Heterozygous Black Heterozygous Polled Purebred
 ASA#3411860 Tattoo: 376F Birth: 3-27-18
 Act. BW: 87 Adj. WW: 924 WW Ratio: 122

- Dams Ratios - WW 5@106
- Hart 273D, Belmont son, went to work at the reputable operation of Melvin & Rick Rohrbach Ranch of Roscoe, SD.
- Produced 3 replacement females

These Roughneck daughters are females that simply put out the very best genetics a breeder can get a hold of and produce sons and daughters that absolutely crush the scales at weaning time. Hart 376F is a power bull that is extremely stylish and has that extra rear muscle and flank that has helped him acquire such an impressive weaning weight! He has got so many attributes that the progressive cattlemen are striving for that they need to be able to produce top weighted steer for feeders and make those beautiful profiled replacement females.

EPDs																
CE	BW	WW	YW	ADG	MCE	MM	MWW	STAY	DOC	CWT	YG	MARB	BF	REA	API	TI
7	2.7	79	107	.18	44	24	63	17	10.3	35.3	-.37	-.02	-.099	.71	115	71
Rank										15	35	30	15	20		

Welsh's Warsaw 312Z

FBFS Warsaw 068W

Welshs Rosie 102W

Hart Miss 439Z

WLB Roughneck 366R 377W

Hart Miss Paramount R294



Hart 379F

Homozygous Black Homozygous Polled Purebred

ASA#3411690 Tattoo: 379F Birth: 3-28-18
Act. BW: 83 Adj. WW: 867 WW Ratio: 114

Welsh's Warsaw 312Z

FBFS Warsaw 068W

Hart Miss 195C

Welshs Rosie 102W

ES Ridgerider YW3

Hart Miss Power Drive R5

• Recommended Heifer Bull

It was a shame that this young Ridgerider dam lost her first calf, we are sure it would have been a whooper like this Warsaw son that is the youngest bull in our offering this year. He is double bred calving ease with both Warsaw and Ridgerider in his pedigree, they have been our go to sires for sleep easy calving that also leaves you with a highly desirable and marketable product in the end.

EPDs																
CE	BW	WW	YW	ADG	MCE	MM	MWW	STAY	DOC	CWT	YG	MARB	BF	REA	API	TI
9	.7	68	93	.16	5	26	60	19	9.0	21.7	-.40	-.17	-.107	.56	114	64
Rank				25				15				25				



Sons of JS Belmont 15B



Hart 139F

Homozygous Black Homozygous Polled Purebred

ASA#3411785 Tattoo: 139F Birth: 2-19-18
Act. BW: 78 Adj. WW: 752 WW Ratio: N/A

EPDs																
CE	BW	WW	YW	ADG	MCE	MM	MWW	STAY	DOC	CWT	YG	MARB	BF	REA	API	TI
10	1.6	62	96	.22	6	28	59	18	12.7	37.6	-.49	.13	-.1002	1.09	128	69
Rank				30				10				30				



GW-WBF Substance 820Y
JS Belmont 15B
JS Flatout Flirty 46T
RFS Direct Force T19
Hart Miss 307A
Hart Ms. Traildust U262

• Dams Ratios - BW 4@101, WW 4@106
• Hart War Zone 249E a Warsaw bull worked hard for Maurie Larsen Family of Burwell, NE.
• Hart 220D, a Rancher son was purchased by Collin Anson of Wessington Springs, SD.
• Produced 1 replacement female. Belmont has produced some top-notch sale highlights like Hart Derby 062E, Hart Arlington 093E, Hart 140E, Hart Jaxon 173D, Hart 047D, Hart 009D in the 3 short years he has been on the ranch. He is well known for his extra frame and massive muscle mass building traits. Hart 139F is a super moderate Belmont son that is really complimented by his huge depth of rib and massive hind quarters. He has a fabulously awesome disposition that is second to none and would be a wise investment in your program!



Hart War Zone 299E, Maternal Brother



Hart 220D, Maternal Brother



Hart 103F

Homozygous Black Homozygous Polled Purebred

ASA#3411553 Tattoo: 103F Birth: 2-6-18
Act. BW: 85 Adj. WW: 809 WW Ratio: 107

EPDs																
CE	BW	WW	YW	ADG	MCE	MM	MWW	STAY	DOC	CWT	YG	MARB	BF	REA	API	TI
10	1.9	65	100	.22	6	32	64	18	11.1	21.7	-.42	.03	-.102	.68	123	68
Rank				2				10								

JS Belmont 15B

GW-WBF Substance 820Y

Hart Miss Invasion U042

Hart War Zone 299E, Maternal Brother

Triple C Invasion R47K

KS Rikki R343

- Dams Ratios - BW 9@104
- Hart Double Time X094, 2011 sale standout went to Tom & Jordon Geffre of Crete, ND.
- Produced 3 replacement females.

Here we have a Belmont son that is so different in his makeup, very correct at every angle and aspect while transmitting tremendous power and style. He compiles a tremendous hip structure along with massive hip structure, impressive rib shape and structural integrity all on a very solid foundation!



Sons of Hart Mega Watts 019C



LOT 69

Hart Blackout 024F

Homozygous Black Homozygous Polled Purebred

ASA#3411714 Tattoo: 024F Birth: 1-22-18

Act. BW: 83 Adj. WW: 850 WW Ratio: 112

EPDs																
CE	BW	WW	YW	ADG	MCE	MM	MWW	STAY	DOC	CWT	YG	MARB	BF	REA	API	TI
7	2.4	81	117	.22	4	27	67	17	11.5	24.4	-.52	-.02	-.117	.89	121	75
Rank		10	15			15	4		35		20			35		20

Hart Mega Watts 019C W/C Utah 534A
SNF Prima Donna A-100

Hart Miss 217D BBS True Justice B10
Hart Miss Mack T331

- Out of a first calf heifer.
- Grandam has produced 7 replacement heifers and 2 bulls working hard for a very respected cattle program at the Maurie Larsen Ranch of Burwell, NE, and Dale Pitzel of Eden, SD.

Hart Blackout 024F is a brilliant combination of high volume, physical quality, excellent EPD performance and perfect balance. He showcases a trifecta of skeletal correctness, easy fleshing ability and tremendous rib and depth combined in a very unique, flashy package on superb foot structure!



LOT 70

Hart 118F

Homozygous Black Homozygous Polled Purebred

ASA#3411768 Tattoo: 118F Birth: 2-10-18

Act. BW: 83 Adj. WW: 866 WW Ratio: 114

EPDs																
CE	BW	WW	YW	ADG	MCE	MM	MWW	STAY	DOC	CWT	YG	MARB	BF	REA	API	TI
8	2.3	79	111	.20	5	25	64	16	14.5	29.2	-.34	.00	-.103	.51	118	73
Rank		10	25			25	10		10							30

Hart Mega Watts 019C W/C Utah 534A
SNF Prima Donna A-100

Hart Miss 282D JS Belmont 15B
Hart Miss 705Y

- Out of a first calf heifer.
- The combination of HART MEGA WATTS and BELMONT really clicked here bringing us a bull calf with the total package of extra linear length, uncompromising depth of body, deep full hind quarters that certainly pushes that scale in the right direction. His super explosive rate of gain makes him genetically ideal for any cattle program and is a home run in our books.

LOT 71

Hart Conductor 040F

Homozygous Black Homozygous Polled Purebred

ASA#3411612 Tattoo: 040F Birth: 1-26-18

Act. BW: 78 Adj. WW: 805 WW Ratio: 106

Hart Mega Watts 019C W/C Utah 534A
SNF Prima Donna A-100

Hart Miss 114D JF Rancher 222Z
Hart Miss X375

EPDs																
CE	BW	WW	YW	ADG	MCE	MM	MWW	STAY	DOC	CWT	YG	MARB	BF	REA	API	TI
11	1.8	80	110	.18	5	23	63	12	12.2	23.2	-.53	.00	-.131	.81	116	75
Rank		10	30			15			30		20		10			20

- Recommended Heifer Bull
 - Out of a first calf heifer.
 - Grandams Ratios - BW 7@102, WW 7@102, YW 4@101
- Hart Mega Watts 019C had become the cattlemen's breeding dream, and is building bulls with league leading muscle, massive bone structure, ample amounts of dimension and unsurpassed substance! HART 040F mirrors these same features coupled with an impeccable EPD profile that certainly matches his explosive carcass, significant muscle mass and substance all the while sitting on top of set of terrific legs and big feet!

LOT 72

Hart 124F

Homozygous Black Homozygous Polled Purebred

ASA#3411655 Tattoo: 124F Birth: 2-12-18

Act. BW: 76 Adj. WW: 802 WW Ratio: 106

- Out of a first calf heifer.
- Recommended Heifer Bull
- Grandams Ratios - BW 7@100, WW 7@105

We have been stressing how these Mega Watt sons

are tailor-made for the commercial cattlemen in mind and have that consistency and

predictability to sire heavy pound making herd bulls, robust steers and easy fleshing and broody replacements. We have a customer that only purchases semen from our genetics to produce his own bulls to service his cows and he states the Mega Watts genetics have constantly given him top end results. Hart 124F is a low birthed, high end performance herd bull prospect that is very smooth through his front end, extremely well balanced with a big sound foot. The guess work has been done for you here and he will be a key component in this ever demanding industry we all belong!

EPDs																
CE	BW	WW	YW	ADG	MCE	MM	MWW	STAY	DOC	CWT	YG	MARB	BF	REA	API	TI
11	1.1	70	94	.15	5	29	64	11	13.0	12.3	-.44	-.02	-.117	.50	108	70
Rank		35				4	10		20							

Hart Mega Watts 019C W/C Utah 534A
SNF Prima Donna A-100

Hart Miss 154D W/C Utah 534A
Hart Miss X736



Hart Transformer 030F

Homozygous Black HOMOZYGOUS Polled Purebred

ASA#3411545 Tattoo: 030F Birth: 1-24-18
Act. BW: 78 Adj. WW: 856 WW Ratio: 113

EPDs																	
CE	BW	WW	YW	ADG	MCE	MM	MWW	STAY	DOC	CWT	YG	MARB	BF	REA	API	TI	
11	1.6	83	113	.19	6	19	60	13	12.2	17.2	-.49	-.05	-.113	.74	117	75	
Rank		5	20			25	30										20

Hart Mega Watts 019C W/C Utah 534A
SNF Prima Donna A-100

Hart Miss 0306D JS Belmont 15B
LE Bettis Gold A-136

- Out of a first calf heifer.
- Recommended Heifer Bull
- Grandams Ratios - BW 3@103, WW 3@107, YW 2@101
- Raised 2 replacements heifers and 1 bull delivering top results at the Mike Roesch Ranch of Roscoe, SD.

Hart Mega Watts 019C certainly has come into his own and produces a set of bull calves this year that we couldn't be more proud of. Hart Transformer 030F has a different stroke of genetic greatness that lends this outcross bull calf to endless breeding avenues. He is so correct at every angle, huge middle extension that continues thru to his massive hind quarter that sets down of a perfect set of feet. Grab this opportunity to make an investment in proven genetics that will write your own success story.



Hart 195F

Homozygous Black HOMOZYGOUS Polled Purebred

ASA#3411556 Tattoo: 195F Birth: 3-2-18
Act. BW: 78 Adj. WW: 830 WW Ratio: 109

EPDs																	
CE	BW	WW	YW	ADG	MCE	MM	MWW	STAY	DOC	CWT	YG	MARB	BF	REA	API	TI	
11	2.2	83	111	.18	6	21	62	16	12.7	23.5	-.49	-.07	-.120	.76	118	74	
Rank		5	25			20	20										25

Hart Mega Watts 019C W/C Utah 534A
SNF Prima Donna A-100

Hart Miss 048D Welsh's Warsaw 312Z
Hart Miss 275A

- Out of a first calf heifer.
- Grandams Ratios - WW 4@107

What a precisely consistent sire group from Hart Mega Watts with very moderate birth weights that immediately burst into high gaining rates! We focus on complimenting our highly prolific females with modern herd sires that best represents the highest standard of the American Simmental Association as they develop innovative research data gathering programs. So, with these tools a breeder can evaluate and obtain a much more constant outline for seeking out herd sire prospects. Hart 195F best represents these accumulative traits along with his high profile EPD data will make positive achievements to better your cattle program!



Hart 031F

Homozygous Black HOMOZYGOUS Polled Purebred

ASA#3411614 Tattoo: 031F Birth: 1-24-18
Act. BW: 80 Adj. WW: 801 WW Ratio: 106

Hart Mega Watts 019C W/C Utah 534A
SNF Prima Donna A-100

Hart Miss 116D Welsh's Warsaw 312Z
Hart Miss X453



EPDs																	
CE	BW	WW	YW	ADG	MCE	MM	MWW	STAY	DOC	CWT	YG	MARB	BF	REA	API	TI	
7	1.2	75	101	.17	3	27	64	19	11.7	25.0	-.32	.07	-.087	.51	126	73	
Rank		25			10	10	25	35				35					30

- Out of a first calf heifer.
 - Recommended Heifer Bull
 - Grandams Ratios - BW 7@107, WW 7@100
 - Her Hollow Point bull calf from the 2018 bull sale is working hard to make great things happen at Emmons Black Simmentals in Olive, MT.
- Mega Watts delivers on all aspects again with another top-notch bull calf that has Warsaw on the dams side. He is stylish from the profile while having the extra muscle shape and performance, plus excellent on his feet and legs. If you need a purebred bull that is big middled, moderate framed without sacrificing any performance, then this is your guy.



Hart 022F

Homozygous Black HOMOZYGOUS Polled Purebred

ASA#3411650 Tattoo: 022F Birth: 1-22-18
Act. BW: 76 Adj. WW: 794 WW Ratio: 105

Hart Mega Watts 019C W/C Utah 534A
SNF Prima Donna A-100

Hart Miss 150D Welsh's Warsaw 312Z
Hart Miss 350Y



EPDs																	
CE	BW	WW	YW	ADG	MCE	MM	MWW	STAY	DOC	CWT	YG	MARB	BF	REA	API	TI	
13	1.7	78	105	.17	6	25	64	14	12.2	14.7	-.34	-.03	-.084	.47	119	73	
Rank		15			20	10	30										30

- Out of a first calf heifer.
 - Recommended Heifer Bull
 - Grandams Ratios - BW 6@102, WW 6@103, YW 4@105
- We know it can be difficult to find a calving ease bull that has the complete package like calving ease, heavy growth, and a strong profile, but here your difficulty will come with trying to decide which bull best suits your program, we have many great choices!! HART 022F really covers all the bases of data, EPD's and maternal strength and has that complete package that will make a great heifer bull.

Sons of GLS Integrate Z3



Hart 288F

Homozygous Black Homozygous Polled Purebred
 ASA#3411637 Tattoo: 288F Birth: 3-14-18
 Act. BW: 87 Adj. WW: 818 WW Ratio: 108

EPDs																
CE	BW	WW	YW	ADG	MCE	MM	MWW	STAY	DOC	CWT	YG	MARB	BF	REA	API	TI
11	2.7	84	131	.29	7	27	69	11	9.8	43.1	-.45	-.11	-.121	.89	111	75
Rank	35	4	3	4	20	15	2		4				20	35		20

GLS Integrate Z3 Mr. NLC Upgrade U8676
 GLS Miss BTE W149
 Hart Miss 137B JF Rancher 222Z
 Hart Unique Lass T195



GLS Integrate Z3, Sire

• Dams Ratios - WW 3@104

Unfortunately, we only have 2 bulls to offer from Integrate, who took an injury, sidelining him for the year, thank goodness

it wasn't a really serious injury and he will be with us for years to come. When you have a herd bull with his caliber that pairs so perfectly with our performance driven cows a breeder can't help but be a bit disappointed but that certainly is the cattle business! Hart 288F is a poster boy for that patented Integrate stature, heavy growth, solid core fundamentals, and will be a solid building block for any progressive cattle operation.



Hart Fury 373F

Homozygous Black Homozygous Polled Purebred
 ASA#3411672 Tattoo: 373F Birth: 3-27-18
 Act. BW: 83 Adj. WW: 813 WW Ratio: 107

EPDs																
CE	BW	WW	YW	ADG	MCE	MM	MWW	STAY	DOC	CWT	YG	MARB	BF	REA	API	TI
13	2.1	81	125	.27	7	24	65	16	15.2	38.1	-.44	-.10	-.110	.90	123	74
Rank	20	10	10	10	20	30	10		5	15				35		25

GLS Integrate Z3 Mr. NLC Upgrade U8676
 GLS Miss BTE W149
 Hart Miss 180A AJE/HS/MBCC Outlook
 Hart Sweet 1 W037



Hart 281D,
 Maternal Brother

• Dams Ratios - BW 4@104, WW 4@104

• Hart 281D, Rancher son, went just east of here to Kervin Olson Ranch of Amherst, SD, in 2017.

We have a no holes Integrate individual that has

that extra three-dimensional muscle shape, deep side and expansive rib shape that the Integrate calves are well known for and is a clone to Hart Burlington 087E that sold in our 2018 sale. Integrate's semen is almost impossible to get a hold of which makes these two bulls in the sale a huge opportunity to acquire some of the most superior genetics in the Simmental industry.

Sons of W/C Utah 534A



Hart 280F

Homozygous Black Homozygous Polled Purebred
 ASA#3411899 Tattoo: 280F Birth: 3-13-18
 Act. BW: 83 Adj. WW: 814 WW Ratio: 107

- Dams Ratios - BW 13@104, WW 12@100
- Produced 6 replacement females.

This will be the last offering of the auspicious Shoestring female that has paved the way of forming a lasting impression in the form of her legacy. We venture to say that she has brought her very best for her final contribution to this year's bull sale! Her 13th natural calf, Hart 280F, showcases a supreme structural foundation that moves effortlessly around on big feet and great legs. He carries such softness and elite muscle mass with a robust rib shape, he will leave his own legacy of super productive females and chart topping steers.

EPDs																
CE	BW	WW	YW	ADG	MCE	MM	MWW	STAY	DOC	CWT	YG	MARB	BF	REA	API	TI
11	.8	61	85	.15	7	19	49	14	13.4	9.2	-.48	-.26	-.113	.62	101	58
Rank	35	30			30					15						



W/C Utah 534A

Hart Lady Black IIS P557

Yardley Utah Y361
 Miss Werning 534R
 Shoestring Black IIS
 Hart Miss 5303 M505



Hart 241F

Homozygous Black Homozygous Polled Purebred
 ASA#3411645 Tattoo: 241F Birth: 3-8-18
 Act. BW: 87 Adj. WW: 806 WW Ratio: 106

W/C Utah 534A Yardley Utah Y361
 Miss Werning 534R
 Hart Miss 142C GLS Integrate Z3
 Hart Miss 513Z

• Dams Ratios - BW 2@120, WW 2@106

This young Integrate heifer has a unique freshness in her stature and was blessed with a perfect udder that has impeccable teat placement and loves putting everything she has got into her calves. Hart 241F incorporates her highly maternal background with super functionality, a giant rib and chest area while carrying impressive substance across his top and rounding it out into a massive hind quarter.

EPDs																
CE	BW	WW	YW	ADG	MCE	MM	MWW	STAY	DOC	CWT	YG	MARB	BF	REA	API	TI
11	1.7	74	107	.20	4	25	62	14	11.7	27.2	-.45	.01	-.113	.74	119	72
Rank	25	35			20	15			35							35



Sons of ES Ridgerider YW3

LOT 81

Hart 029F

Homozygous Black Homozygous Polled Purebred

ASA#3411535 Tattoo: 029F Birth: 1-24-18
Act. BW: 78 Adj. WW: 784 WW Ratio: 103

EPDs																
CE	BW	WW	YW	ADG	MCE	MM	MWW	STAY	DOC	CWT	YG	MARB	BF	REA	API	TI
11	2.2	80	113	.21	6	24	64	22	11.4	10.7	-.55	-.24	-.105	.90	122	69
Rank		10	20			30	10	2			10			35		

ES Ridgerider YW3 CDI Ridgeline 32T
ES W3
Hart Miss 023D Welsh's Warsaw 312Z
Hart Miss 106B

- Out of a first calf heifer.
- Double Bred Calving Ease
- Recommended Heifer Bull
- Grandams Ratios - BW 3@102, WW 3@100
- She is a cow producing machine

Hart 029F is a double bred calving ease machine, that is blessed with many pleasing qualities. He has structural correctness from every standpoint, power in his from 1/3 that carries into his hip but is so seamlessly blended smoothly throughout. Just put him in the pasture and he will take care of the rest.



LOT 82

Hart Pitch Black 194F

Homozygous Black Homozygous Polled Purebred

ASA#3411514 Tattoo: 194F Birth: 3-2-18
Act. BW: 87 ET Adj. WW: 762 WW Ratio: N/A

EPDs																
CE	BW	WW	YW	ADG	MCE	MM	MWW	STAY	DOC	CWT	YG	MARB	BF	REA	API	TI
13	1.4	68	98	.19	8	29	63	19	11.0	16.0	-.48	-.21	-.110	.73	119	64
Rank					15	4	15	20								

ES Ridgerider YW3 CDI Ridgeline 32T
ES W3
JDJ Rich And Rare 125 JDJ Intimidator 080K
Drake Chaos

- Recommended Heifer Bull
- Hart Pitch Black 194F is a RIDGERIDER and RICH AND RARE embryo bull that is a more moderate framed very streamline, ultra-fancy individual that gives up nothing in the performance department. He has a very strong wide top line, abundance of middle and excellent testicular development. Hart Pitch Black will certifiably transmit some of that Rich and Rare calm demeanor and tons of vigor into a set of calves.



LOT 83

Hart 042F

Homozygous Black Homozygous Polled Purebred

ASA#3411739 Tattoo: 042F Birth: 1-26-18
Act. BW: 85 Adj. WW: 797 WW Ratio: 105

EPDs																
CE	BW	WW	YW	ADG	MCE	MM	MWW	STAY	DOC	CWT	YG	MARB	BF	REA	API	TI
9	2.6	73	108	.22	4	34	70	23	11.5	20.8	-.47	-.03	-.108	.79	131	70
Rank		30	35			1	1	1		35					35	

ES Ridgerider YW3 CDI Ridgeline 32T
ES W3
Hart Miss 245D JF Nationwide 3215A
Hart Miss 077Z

- Out of a first calf heifer.
 - Grandams Ratios - WW 5@106
 - Hart Miss 077Z's Hollow Point son (Hart Bulletproof 329F) is in our 2019 offering and has produced 3 replacement females.
- A big boned, stout bodied son of Ridgerider that boasts a very big spring of rib and is big topped with a great set of legs and feet under him. You could use him with confidence on a set of heifers that are bigger. This first calf heifer sure did a nice job on this bull calf.

LOT 84

Hart 037F

Heterozygous Black Homozygous Polled Purebred

ASA#3411792 Tattoo: 037F Birth: 1-25-18
Act. BW: 78 Adj. WW: 870 WW Ratio: 115

EPDs																
CE	BW	WW	YW	ADG	MCE	MM	MWW	STAY	DOC	CWT	YG	MARB	BF	REA	API	TI
11	.7	78	114	.23	6	34	73	21	12.1	22.4	-.49	-.04	-.114	.82	134	76
Rank		35	25	15	20	35	35	1	1	10	30				25	20

- Out of a first calf heifer.
- Recommended Heifer Bull
- Grandams Ratios - WW 7@107, YW 4@105

Hart Sling Shot 135E was her featured highlight from the 2018 bull sale going to the Tracy & Keith Burgod program of Ipswich, SD. This is a very impressive start to a young All-around daughter that will definitely make her way to the top of our cow program. Her Ridgerider bull has an immense amount of body volume, genuine muscle mass and definition. This is such an incredible combination of sure-fire calving ease with impeccable power and performance. A bull like this can improve a multitude of genetic traits in one generation.

ES Ridgerider YW3 CDI Ridgeline 32T
ES W3
Hart Miss 318D WS All-Around Z35
Hart Sweet Meat W363



Hart 017F

Homozygous Black Homozygous Polled Purebred

ASA#3411777 Tattoo: 017F Birth: 1-21-18
Act. BW: 74 Adj. WW: 799 WW Ratio: 105

- Out of a first calf heifer.
 - Recommended Heifer Bull
 - Grandams Ratios - WW 10@101, YW 6@100
 - Raised 8 replacement heifers and 2 bulls producing pound making steers and heifers at the Waylon Henningson Ranch of Fullerton, ND, and the Tracy & Keith Burgod program of Ipswich, SD.
- Who doesn't love it when calves come easy and grow fast! That is why we still AI to Ridgerider because his sons are sure hit calving ease bulls. This double bred calving ease bull out of Ridgerider is super fancy and has strong maternal traits and is capable of raising heavy stout calves that won't disappoint at the sale barn.

EPDs																
CE	BW	WW	YW	ADG	MCE	MM	MWW	STAY	DOC	CWT	YG	MARB	BF	REA	API	TI
11	1.2	73	104	.19	7	29	66	22	9.2	16.6	-.52	-.16	-.116	.81	127	69
Rank		35	30		30	4	5	2			20					



ES Ridgerider YW3 CDI Ridgeline 32T
Hart Miss 298D ES W3
Welsh's Warsaw 312Z
Hart Miss Royal Flush 55

Sons of M4 Blackstone Z43B



Hart Granite 039F

Homozygous Black Homozygous Polled Purebred

ASA#3411634 Tattoo: 039F Birth: 1-25-18
Act. BW: 80 Adj. WW: 853 WW Ratio: 112

- Out of a first calf heifer.
- Recommended Heifer Bull
- Grandams Ratios - BW 4@104

Hart Granite 039F is as rock solid as they come! He may be out of a first calf heifer, but we expect and demand our heifers to perform and exceed our cornerstone females that have been knocking it out of the park year after year. Her Blackstone bull calf is as impressive as she is and has the same seamless extension of his neck that blends into a massive middle with added frame size contributing to that added weight. The Blackstone bulls will add dollars to your bottom line!

EPDs																
CE	BW	WW	YW	ADG	MCE	MM	MWW	STAY	DOC	CWT	YG	MARB	BF	REA	API	TI
12	.9	85	124	.24	6	20	62	19	12.3	39.4	-.34	.31	-.095	.72	152	86
Rank		30	30	3	10	25		15	30	25	10		4		3	1



Hart Onyx 102F

Homozygous Black Homozygous Polled Purebred

ASA#3411687 Tattoo: 102F Birth: 2-6-18
Act. BW: 74 Adj. WW: 795 WW Ratio: 112

EPDs																
CE	BW	WW	YW	ADG	MCE	MM	MWW	STAY	DOC	CWT	YG	MARB	BF	REA	API	TI
12	1.2	73	99	.16	6	25	61	12	11.7	19.8	-.53	.00	-.121	.85	114	72
Rank		30	30			25	20		35		20		20			35

M4 Blackstone Z43B Hook's Yellowstone 97Y
Hart Miss 193D M4 Ms. Voltage Z43B
JF Made In America 210Z
Hart Lady Goldy T222

- Out of a first calf heifer
- Recommended Heifer Bull
- Grandams Ratios - WW 8@100
- Produced 6 replacement females.

M4 BLACKSTONE Z43B is a Hook's Yellowstone son that brings unique elite genetics that any cattle breeder can utilize. ONYX possesses all the qualities needed to produced the type of progeny that have tons of flex, easy fleshing ability, idealistic structure and impressive muscle shape. He will enhance your herds natural calving ease abilities and take it to the next level.

Sons of SVF Z47 Patch



Hart 305F

Heterozygous Black Homozygous Polled Purebred

ASA#3411576 Tattoo: 305F Birth: 3-15-18
Act. BW: 92 Adj. WW: 748 WW Ratio: 100

EPDs																
CE	BW	WW	YW	ADG	MCE	MM	MWW	STAY	DOC	CWT	YG	MARB	BF	REA	API	TI
8	3.2	70	111	.25	4	28	63	15	9.5	25.1	-.40	-.18	-.104	.64	104	64
Rank			25	20		10	10									

SVF Z47 Patch JF Milestone 999W
Hart Miss 076A SVF/NJC Expectation N206
ASR Final Sort X0151
Hart Ms. Ranchhand U100

- Dams Ratios - WW 4@100, YW 2@101
- Produced 2 replacement females.



Hart Milwaukee 133E, Maternal Brother

Hart Milwaukee 133E, a Rebel son, went to work on a great set of cows at the Gilliland Livestock Ranch of Davis, CA, in 2018. Hart 305F has that same style and Patch performance in a more moderate base with staggering power with a bit lower dimension. Patch sons always have a lot of punch and growth and this boy should have all the same attributes that Patch punches into his calves and give you a pile of sweet replacements or a stellar bunch of steers.



Hart 326F

Homozygous Black Homozygous Polled Purebred

ASA#3411874 Tattoo: 326F Birth: 3-19-18
Act. BW: 83 Adj. WW: 792 WW Ratio: 104

EPDs																
CE	BW	WW	YW	ADG	MCE	MM	MWW	STAY	DOC	CWT	YG	MARB	BF	REA	API	TI
11	2.3	73	110	.23	7	29	65	17	8.5	33.4	-.38	-.28	-.107	.67	107	64
Rank	30			30	35	30	5	10	30							



Hart 236B,
Maternal Brother



Hart 070D,
Maternal Brother

- Dams Ratios - BW 7@105, WW 7@102, YW 4@102
- A Utah son, Hart 331E, went to new customers Rodney West of Wausa, NE, in 2018.
- Hart 070D, a Warsaw son, worked hard for Rex Nelson of Batesland, SD, in 2017.
- Hart 236B, an Integrate son, serviced a great set of females for Maurie and Lynette Larsen of Burwell, NE.
- Produced 3 replacement females.

Every bull that this Sweet Meat female has produced ended up at some very prominent commercial outfits that expect nothing but the best for their program, as should every breeder in the cattle industry. Patch has given a huge variety of breeding avenues, whether your needs are for all black, black blaze, all red or red blaze, Patch calves excel on all levels. Hart 326F is a young Patch calf that is just a bit more moderate, but really has that Patch level of performance with abundant muscle, natural rib shape and extension.

SVF Z47 Patch

JF Milestone 999W

Hart Miss X484

SVF/NJC Expectation N206

SAS T101 Sweet Meat

Hart Miss Club King T197



Hart 170F

Homozygous Black Homozygous Polled Purebred

ASA#3411648 Tattoo: 170F Birth: 2-26-18
Act. BW: 83 Adj. WW: 798 WW Ratio: 105

EPDs																
CE	BW	WW	YW	ADG	MCE	MM	MWW	STAY	DOC	CWT	YG	MARB	BF	REA	API	TI
10	1.8	72	110	.24	5	27	63	19	12.9	26.7	-.44	-.01	-.108	.76	127	71
Rank	35			30	25	10			15	25	20					

SVF Z47 Patch

JF Milestone 999W

Hart Miss 148Z

SVF/NJC Expectation N206

Dillons In Time

Hart Miss X691



Hart Silverado 346E,
Maternal Brother



Hart 231D,
Maternal Brother



Hart Rouge Nation
239C, Maternal
Brother

- Dams Ratios - BW 5@105, WW 5@104, YW 4@103
- Hart Silverado 346E was purchased by Ryan Opitz of Eden, SD.

• Hart 231D went to work at Beitelspacher Farms of Hoven, SD.

• Hart Rouge Nation 239C stand out blazed faced Nationwide bull went to Spurr Farms of Houghton, SD.

• A Warsaw son went to Gary Hardie of Seneca, SD. This Dillons In Time dam flat out produces a top gun whopper every time and her Patch son this year has that phenomenal structure that Patch delivers time and time again. Hart 170F is so correct from front to back and from top to bottom, he surely has all the right pieces in all the right places! He is a bit more moderate than some of the Patch calves offered in previous sales, but he really laid on the muscle to his soft sided, loose made frame.



Hart 249F

Homozygous Black Homozygous Polled Purebred

ASA#3411644 Tattoo: 249F Birth: 3-9-18
Act. BW: 78 Adj. WW: 848 WW Ratio: 112

EPDs																
CE	BW	WW	YW	ADG	MCE	MM	MWW	STAY	DOC	CWT	YG	MARB	BF	REA	API	TI
11	2.1	70	104	.21	7	29	64	17	9.4	1.4	-.46	.10	-.100	.56	129	72
Rank	35			25		5	10			30			35		35	

SVF Z47 Patch

JF Milestone 999W

Hart Miss Shamrock T141

SVF/NJC Expectation N206

Black Shamrock E157

Hart Payback Lass J721



Hart Forty Five
097E, Maternal
Brother

- Dams Ratios - BW 10@107, WW 10@102
- Hart Forty-Five 097E, a TNGL Black Label C829, a 2018 stand out sale feature was purchased by Rick & Lisa Rau of Eureka, SD
- Produced 4 replacement females.

Hart 249F is another solid from end to end, big-time performing son from Patch that is very hard to poke a hole in. He is very heavily muscled with a ton of stretch and complimented with a great foot and leg combination. It has been a pleasure watching this calf mature into the stud that he has become today and is an excellent place to look if you are looking to raise profitable cattle!





LOT 92

Hart 244F

Heterozygous Black Homozygous Polled Purebred

ASA#3411851 Tattoo: 244F Birth: 3-9-18

Act. BW: 90 Adj. WW: 896 WW Ratio: 118

EPDs

CE	BW	WW	YW	ADG	MCE	MM	MWW	STAY	DOC	CWT	YG	MARB	BF	REA	API	TI
2	3.7	72	112	.25	0	29	65	18	10.4	36.8	-.49	-.18	-.115	1.00	102	63
Rank		35	25	20		5	10			15				15		

SVF Z47 Patch JF Milestone 999W
 SVF/NJC Expectation N206
 Hart Miss 408Z New Trend Way Cool 6W
 Hart Lady Locator P446

• Dam has produced 4 replacement females.
 How could you expect nothing less than superior performance when there is "Patch" and "Way Cool" (two bulls that have nothing to prove to the Simmental breeding world-they've already done it!) in this power pedigree. Hart 244F is an outright monster that highlights a very smooth build, huge growth curves and unmatched performance! Patch herd bull prospects that have been offered over the last couple of years are highly sought after and with very good reason!



BULL BUYER'S GUIDE

Explanation of How to Utilize API and TI Indexes

First, determine which index to use; if you're keeping replacements use API, if not, TI. Then, just as with EPDs, zero in on the unit difference between bulls. (As described to the left, index units are in dollars per cow exposed.) The difference can be used to determine how much a bull is worth compared to another. Or, put another way, how much you can pay for one bull compared to another. For example, when buying an all-purpose-type sire, you can quickly figure a bull scoring +100 for API is worth an extra \$6,000 over a \$50 bull if both are exposed to 30 cows over 4 years (\$50 diff. x 30 hd. x 4 yr. = \$6,000). A percentile-ranking chart is required to determine where a bull's index value ranks him relative to other bulls in the breed. For more information, visit www.simmental.org.

Definitions of Terms

- Expected Progeny Differences (EPDs): EPDs are the most accurate and effective tool available for comparing genetic levels.
- Back Fat (BF): Inches of backfat.
- Birth Weight (BW): Pounds of birth weight.
- Calving Ease (CE): Percent of unassisted births when used on heifers.
- Carcass Weight (CW): Pounds of carcass weight.
- Maternal Calving Ease (MCE): Percent of unassisted births in first-calving daughters.
- Milk (MLK): Pounds of weaning weight due to milk.
- Marbling (MRB): Marbling score.
- Maternal Weaning Weight (MWW): Pounds of weaning weight due to milk and growth.
- Ribeye Area (REA): Square inches of ribeye.
- Warner-Bratzler Shear Force (WBSF): Pounds of force required to shear a steak.
- Stayability (STAY): Percent of daughters remaining in the cowherd at 6 years of age.
- Terminal Index (TI): Dollars per cow exposed under a terminal-sire scenario.
- Weaning Weight (WW): Pounds of weaning weight.
- Yearling Weight (YW): Pounds of yearling weight.
- Yield Grade (YG): Yield grade score.

GREAT OPPORTUNITY!

Your Chance to Win!

GIVING AWAY AN OPEN YEARLING HEIFER!



Since the inaugural inception of the opportunity to win an open heifer was conceived, we have had many breeders proclaim that they wished they had won the heifer. Our first ever winner, Heather Mehlhaff, of Eureka, SD was tremendously excited to take away a heifer from our coveted females. So, it just naturally seemed like it is the right thing to do... We will be giving away another open heifer! The same rules apply for the 2019 sale, all you have to do to be eligible to win the heifer is to purchase a bull in the 2019 sale, the more bulls you purchase the more times your name goes into the bucket. Whomever wins the heifer has the option of either keeping the heifer or they may choose the option of taking a \$2,000 rebate on the bulls that they have purchased in the sale. It is totally up to the individual that wins. **GOOD LUCK!**



**2018 Winner:
Heather Mehlhaff**



**2019 HEIFER
FEATURE...**

HART MISS 347F

**Homozygous Black
Homozygous Polled Purebred
ASA#3411608
Tattoo: 347F Birth: 3-22-18**

GLS INTEGRATE Z3
HART TIMBER CREEK 115D
HART MISS 642Y
ES RIDGERIDER YW3
HART MISS 111C
HART MS DREAMMAKER U489

Purebred Simmental Percentile Table

%	API	TI	CE	BW	WW	PWG	YW	MCE	MLK	MWW	STY	DOC	CWT	YG	MRB	BF	REA	SF
1	158.57	85.63	17.10	-2.50	89.30	0.31	136.10	10.40	32.00	69.90	22.30	17.00	48.60	-0.60	0.41	-0.15	1.22	-0.51
2	153.89	83.39	16.10	-1.80	86.20	0.29	131.00	9.70	30.60	68.10	21.70	16.10	45.60	-0.59	0.35	-0.14	1.17	-0.49
3	150.85	82.11	15.40	-1.50	84.40	0.29	128.20	9.30	29.70	67.10	21.40	15.60	44.10	-0.58	0.32	-0.14	1.14	-0.47
4	148.60	81.14	15.00	-1.20	83.10	0.28	126.00	9.00	29.00	66.20	21.10	15.20	42.90	-0.57	0.30	-0.14	1.12	-0.46
5	146.66	80.33	14.70	-1.00	82.20	0.28	124.50	8.80	28.50	65.60	20.90	14.90	41.90	-0.56	0.28	-0.14	1.10	-0.45
10	141.26	77.70	13.60	-0.30	78.90	0.26	119.30	7.90	26.90	63.20	20.20	13.80	38.70	-0.54	0.21	-0.13	1.03	-0.42
15	137.72	76.03	12.80	0.20	76.80	0.25	115.70	7.40	25.80	61.70	19.70	13.10	36.70	-0.53	0.17	-0.13	0.99	-0.40
20	134.97	74.62	12.30	0.50	75.00	0.24	112.90	7.00	25.00	60.50	19.30	12.60	35.00	-0.51	0.13	-0.12	0.95	-0.39
25	132.73	73.46	11.80	0.80	73.60	0.23	110.40	6.60	24.30	59.50	19.00	12.20	33.70	-0.50	0.11	-0.12	0.93	-0.37
30	130.70	72.43	11.40	1.00	72.30	0.23	108.20	6.30	23.70	58.60	18.60	11.80	32.50	-0.49	0.08	-0.12	0.90	-0.36
35	128.83	71.48	11.00	1.20	71.10	0.22	106.20	6.00	23.10	57.80	18.30	11.40	31.40	-0.49	0.06	-0.12	0.88	-0.35
40	127.04	70.58	10.60	1.40	70.00	0.21	104.30	5.70	22.60	57.00	18.00	11.10	30.30	-0.48	0.05	-0.12	0.86	-0.34
45	125.39	69.77	10.30	1.60	68.90	0.21	102.50	5.50	22.10	56.30	17.70	10.80	29.30	-0.47	0.03	-0.11	0.84	-0.33
50	123.77	68.93	10.00	1.80	67.80	0.20	100.60	5.20	21.60	55.60	17.40	10.50	28.30	-0.46	0.01	-0.11	0.82	-0.33
55	122.22	68.14	9.60	2.00	66.80	0.20	98.70	4.90	21.10	54.80	17.10	10.20	27.30	-0.45	0.00	-0.11	0.80	-0.32
60	120.65	67.34	9.30	2.20	65.70	0.19	97.00	4.70	20.60	54.10	16.80	9.90	26.30	-0.44	-0.02	-0.11	0.79	-0.31
65	119.01	66.48	8.90	2.30	64.70	0.19	95.10	4.40	20.10	53.30	16.50	9.50	25.30	-0.43	-0.03	-0.10	0.76	-0.30
70	117.31	65.64	8.50	2.50	63.60	0.18	93.20	4.10	19.60	52.60	16.10	9.20	24.30	-0.42	-0.05	-0.10	0.75	-0.29
75	115.46	64.73	8.10	2.80	62.50	0.18	91.10	3.80	19.10	51.70	15.70	8.70	23.20	-0.41	-0.06	-0.10	0.72	-0.28
80	113.37	63.67	7.60	3.00	61.20	0.17	89.00	3.40	18.50	50.90	15.30	8.30	22.00	-0.40	-0.08	-0.09	0.70	-0.27
85	111.00	62.51	7.00	3.30	59.80	0.16	86.70	3.00	17.80	49.90	14.70	7.70	20.50	-0.39	-0.11	-0.09	0.67	-0.25
90	107.98	61.15	6.20	3.70	58.00	0.15	83.70	2.50	16.90	48.80	14.00	6.80	18.60	-0.37	-0.13	-0.08	0.63	-0.24
95	102.95	59.27	5.10	4.30	55.10	0.14	78.80	1.70	15.60	47.20	13.00	5.10	15.60	-0.34	-0.17	-0.08	0.58	-0.21
Avg	123.77	68.93	10.00	1.80	67.80	0.20	100.60	5.20	21.60	55.60	17.40	10.50	28.30	-0.46	0.01	-0.11	0.82	-0.33



Hart Prime 017E

thank you



High Seller to Emmons Black Simmental



Congratulations to **Heather Mehlhaff**, of Eureka, SD, the winner of the heifer giveaway.



Thank you to our high dollar customer **Barry Emmons**, Emmons Black Simmentals of Olive, MT and thanks to our high volume buyer **Steve Stoddard** of Broadus, MT.



Hart Hillman 184E

Sold to Crossroad Farms and Semex

HART SIMMENTALS wants to take this opportunity to humbly thank our 2018 buyers, bidders and visitors. **Thanks for a terrific year!**

BUYERS: High-volume buyer Steve Stoddard, Emmons Black Simmental, Ashworth Farm & Ranch, Crossroads Farms and Semex, 6H Ranch, CK Cattle Co., Yardley Cattle Co., Steve Stoddard, Bucky & Wayne Kukla, Todd O'Bryan, Tracy & Keith Burgod, Heartland Simmentals, Gilliland Livestock, McDonald Angus, Lee Lira, Loren Duchsherer, Rohrbach Farms, Maurie Larsen, Pat Knecht, Bruley Farms LLC, Chad Jessen, Bohr Farms LLC, John Berdo, Scott Braun, Kervin Olson, Loren Johnson, Dale Pltzel, Jerry Barton, Larry Akkerman, Dave & Becca Melland, Mike Roesch, Taylor Jenner, Wes Moser, Dylan & Jerome Lapka, Dronen Simmental Ranch, Ronald Thoreson, Justin Bakeberg, Grant Gilchrist, Spurr Farms Inc., Jordan & Heather Mehlhaff, Rick & Lisa Rau, Don Guthmillier, Rodney West, Kenneth Loomer and Cody Kleeman.

The Hart Family
10904 387th Avenue
Frederick, SD ♥ 57441
605-252-2065 ♥ 4hoooves@nvc.net
hartsimmentals.com



New Herd Sires at Hart Simmentals



WS Equalizer E1

Homo. Black Homo. Polled Purebred
 ASA#3339288
 Tattoo: E1
 Birth: 1-21-17
WS Stepping Stone B44 x
WS Ms. Wide Track A32

EPDs																
CE	BW	WW	YW	ADG	MCE	MM	MWW	STAY	DOC	CWT	YG	MARB	BF	REA	API	TI
8	2.3	72	111	.24	2	22	58	20	12.5	34.4	-.36	.12	-.084	.81	132	72



WAGR Fine Line 7052E

Hetero. Black Polled Purebred
 ASA#334863
 Tattoo: 7052E
 Birth: 3-23-17
TL Bottomline x
WAGR Lullaby 703T

EPDs																
CE	BW	WW	YW	ADG	MCE	MM	MWW	STAY	DOC	CWT	YG	MARB	BF	REA	API	TI
8	2.3	64	89	.16	5	16	48	11	2.2	27.6	-.42	.21	-.099	.76	115	69

This sale will be broadcast live on the internet! **DVAuction** Broadcasting Real-Time Auctions

Justin Dikoff 605-290-0635

DCR Mr. Exclusive E28

Black Homo. Polled Purebred ASA#3320938 Tattoo: E28
 Birth: 2-9-17

Kuntz Sheriff 8A x KLSR Miss United C501

EPDs																
CE	BW	WW	YW	ADG	MCE	MM	MWW	STAY	DOC	CWT	YG	MARB	BF	REA	API	TI
14	-.5	79	125	.29	10	25	65	14	12.8	47.3	-.32	-.08	-.095	.75	125	76

For Sale by Private Treaty – Please Inquire!

80 fancy open replacement purebred heifers all out of the sires to the bulls in our bull sale!

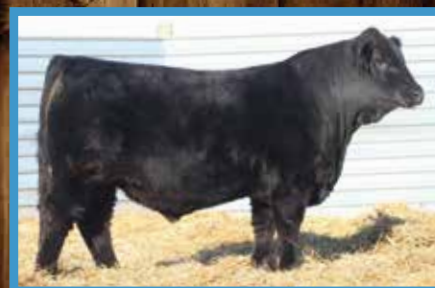
44th Annual

HART SIMMENTALS Power Bull Sale

★ PLEASE JOIN US! ★

Thursday, February 7, 2019 • 12:00 Noon Sharp!

Sale will be held at the farm 2 miles south of Frederick, SD



Video sale only - bulls will be penned for viewing at the farm prior to and on sale day! Cattle can be viewed at our place in advance!

This sale will be broadcast live on the internet!

DVAuction
Broadcasting Real-Time Auctions

**96% OF BULLS
SELLING ARE
HOMOZYGOUS
POLLED!**



Eberspacher Ent. Inc.

2904 County Road 6
Marshall, MN 56258

First Class
U.S. Postage
PAID
Marshall, MN
Permit #86

First Class Mail: Time Dated Material!

**92 HERD BULL
PROSPECTS
WILL SELL ON
FEBRUARY 7!**