

Breeders **TOP SHELF** Sale 2008

Breeders Top Ten
Customer Appreciation Sale

5:00 p.m. • *Friday*
September 19, 2008

Held at the
Double S Farms Sale Facility
in Fountain Run, Kentucky



View sale offering in color
online at www.ebersale.com



Selling 78 Lots of Elite Simmental Genetics

Bred Females, Donors, Pairs, Herd Bull Prospects, Embryos and Pregnancies!

Welcome to the 3rd Annual Breeders Top Shelf Sale



Dear Cattlemen,

We would like to invite you to the 3rd annual Breeders Top Shelf Sale. This sale was established as a fall marketing tool for the Breeders Top 10 members and you the, valued customers.

Once again, this progressive breeder group has assembled an elite set of Simmental and Sim-Angus genetics that will work for any progressive program.

The decision to offer bulls again in this sale was based on the request of our customers for fall calving programs – they are a stout high performance group with calving ease as a priority.

A life time of profitable production lies ahead for you with this group of young bred females which are carrying the service of the breed's finest herd sires. The Top Shelf sale is loaded with genetics for both the commercial and purebred cattle operations.

Plan to make it a Simmental weekend by attending the Top Shelf sale on Friday night with the same great hospitality and fellowship you have always enjoyed from the Breeders Top Ten group and then head to Tennessee for the KenCo Production Sale on Saturday!

If you can assist you in any way, please feel free to contact. Looking forward to seeing you on September 19th.

Sincerely,

Val & Lori Eberspacher

Val & Lori Eberspacher, Eberspacher Enterprises, Inc.

Congratulations!

**HILCO Grand Lady
107RT**

High-selling female in the 2008
Breeders Top Ten Sale

Congratulations to the
Campbell Family, Sycamore, PA

*Supreme Champion
2008 Blue & Gold Showdown*

*Division Champion
2008 Breeders Sweepstakes*





Welcome to our sale!
Friday, September 19, 2008

Sale will begin at 5:00 pm SHARP!

*Double S Farms Sale Facility in
Fountain Run, Kentucky*

Sale Day Phones:

270-434-3209 • 270-670-7814 • 612-805-7405

*Selling 78 Lots of
bred females, cow/calf pairs, donors,
herd bulls, embryos and pregnancies!*

SALE LOCATION: Double S Farms Sale Facility, Fountain Run, KY

From Louisville, KY: I-65 to Cave City Exit, follow signs to Barren River State Park, turn on Hwy. 87 and go 8 miles. From Nashville, TN: I-65 to Franklin, KY Exit, Hwy 100 to 31E, go north approx. 10 miles to Barren River State Park entrance and turn on Hwy. 87, go 8 miles.

SCHEDULE:

Thursday, September 18th All Day Viewing of Sale Cattle
6:00 pm Hospitality Evening at Double S Sale Facility - Everyone Welcome!
Friday, September 19th
8:00 am Sale Cattle on Display
4:00 pm Complimentary Meal
5:00 pm 3rd Annual Breeders Top Shelf Customer Appreciation Sale

AIRPORTS: Louisville International/Standford Field, Louisville, KY and Nashville Metropolitan, Nashville, TN. All served by most major airlines.

AREA MOTELS: Barren River Lodge, 1149 State Park Rd, Lucas, KY . . . 800-325-0057
Comfort Inn, 210 Calvary Drive, Glasgow, KY 42141 (behind Shoneys) . . . 270-651-9099

AUCTIONEER: Col. Bruce Miller 817-685-7872

MARKETING REPRESENTATIVES:

Steve Sellers, EDJE Technologies 770-957-6145
Dalton Lundy 502-727-6898
William McIntosh, Special Assignment 502-867-3132
Jeremy Ruble, ASA Rep 406-581-7940

ANNOUNCEMENTS: Announcements made sale day and from the auction block during the sale take precedence over printed material associated with this sale. Anyone attending this sale attends at their own risk. Breeders or any of the sale force will not be responsible for any personal injury attending this sale.

TERMS & CONDITIONS: All cattle sell under the Terms & Conditions of the American Simmental Association. Terms available sale day.

EPDs: Please note that EPDs may change from the time the sale catalog is printed until registration papers are transferred. EPDs listed are Fall 2008 numbers.

TRUCKING: Breeders and sale force will assist buyers in coordinating and making the most economical trucking arrangements possible.

LIVESTOCK INSURANCE: Insurance will be available sale day through sale management and Jame Secondino, Harding & Harding, phone 765-832-2697

Top Shelf Breeders

DOUBLE S FARMS

Steve & Leisa Shirley
8121 Austin Tracy Road
Fountain Run, KY 42133
Phone 270-434-3209
Johnnie Moore 270-434-4661
Cell 270-670-7814

LOUKEN CATTLE CO.

Vic Castellon & Steve Shirley
8121 Austin Tracy Road
Fountain Run, KY 42133
Phone 270-434-3209

HILL COUNTRY CATTLE CO.

Johnnie, Vanessa, Cody & Kyra Moore
1998 Defeated Creek Road
Fountain Run, KY 42133
Phone 270-434-4661 or Cell 270-670-7814

INDIAN CREEK SIMMENTALS

Marc & Danielle Tinchler
7650 King Road
Oxford, OH 45056
Phone 513-756-9178 or Cell 513-405-2808

BLACK RIDGE SIMMENTALS

Carl, David & Alan Belcher
4358 Conner Grove Road SW
Meadow of Dan, VA 24120
Phone 336-374-3259 or 336-408-7179

Professional Sale Management

Eberspacher
ENTERPRISES INC.

Val and Lori Eberspacher • 2904 Co. Rd. 6 • Marshall, MN 56258
Office 507-532-6694 • Fax 507-532-9457
Cell: 612-805-7405
Email: ebersale@starpoint.net • www.ebersale.com

*See sale offering in color online at
www.ebersale.com*



NJC Ebony Antoinette



SS Ebony's Blk Jade N95



SS Ebony's Jade R95



SS Montana Jade T95

NJC TJF Jaded Edge J108

Breeder: Double S Farms ASA#2028114 Tattoo: J108

Pld/Scurred Homozygous Blk Purebred BD: 1-12-99 Adj. BW:82 Adj. WW: 656

CE	BW	WW	YW	MCE	MM	MWW	STAY	CW	YG	MARB	BF	REA	API	TI
7	0.9	31	49	6	14	30	22	-7.1	-.04	.05	.01	.12	103	60

PTL Cutting Edge D209

BS Mr. Arapahoe 811A

NLC B75 Bary

NJC Ebony Antoinette

Black Irish Kansas

NJC Betsy Ross

A.I. Sire: SAC Mr. MT 73G on 3-13-08

Est. Plan Mating EPDs: 8 1.25 29 44 -2 9 24 20

CW -9.75 YG -.01 Marb .15 BF .02 REA .02 API 103 TI 61

Pasture Sire: SS Ebony's Daydream on 6-1 to 7-20-08

NJC TJF Jaded Edge J108 is an own daughter of the Ebony Antoinette cow. She is sired by Cutting Edge, making her a full sister to the dam of the Circle T donor, Antoinette K205. Jaded Edge has the look that the Antoinette cow family is so well known for, being extremely attractive and well balanced. Daughter of Jaded Edge have sold in the Breeders Top Ten Sale as well as the Denver National Sale. Her progeny have been very well received as they too have a nice look back by a predictable cow family. Jaded Edge has been flushed on a limited basis with great success, averaging 21 #1 embryos per flush.

See sale offering in color
online at www.ebersale.com



Donor



HF/GFI Black Belle 10E



SS Dream Kisses T35



SS Ebony's Grand Master

2 BRS Kandy Kisses K35

Breeder: Double S Farms ASA#2095465 Tattoo: K35
Homo. Polled Homo. Blk Purebred BD: 4-4-00 Adj. BW: 70 Adj. WW: 592

CE	BW	WW	YW	MCE	MM	MWW	STAY	CW	YG	MARB	BF	REA	API	TI
5	0.6	28	51	4	7	21	23	-6.1	-.10	.30	.02	.38	118	64

BRS Kandy Kisses is a homozygous polled, homozygous black donor sired by Lucky Strike and Black Belle, a daughter of the famous 9A donor. K35 is a smooth designed cow that is long sided and nicely balanced. As a mature donor, she has consistently produced 10-15 #1 embryos per flush. She sells with her 3-08 blaze face homozygous polled bull calf at side sired by the high-selling bull at the 2007 North American Sale that went to Rancier Farms in Canada.

GW Lucky Strike 147G

Lehman Lucky Buck 7049C

HF/GFI Black Belle 10E

407D

Burns Bull X339U

ER Miss JB 91X 9A

A.I. Sire: SS Ebony's Grand Master on 5-23-08

Est. Plan Mating EPDs: 11 -3.45 43 73 1 5 26 25

CW .40 YG -.01 Marb .10 BF .04 REA .29 API 129 TI 75

Pasture Sire: SS Ebony's Daydream on 6-1 to 7-20-08

2A U35 Bull Calf Breeder: Double S Farms ASA#Pending Tattoo: U35 Homo. Polled Blk Blaze Purebred

BD: 3-10-08 BW: 78 Sire: SS Ebony's Intuition Est EPDs: 8 -8 32 58 5 7 23 23 CW -4.5 YG -.01 Marb .30 BF .04 REA .24 API 124 TI 70



Donor



SS Joanne TT246



SS Mr. Influential SS905



STF Smooth Sailin

3 COTT Joanne 668J

Breeder: Double S Farms ASA#2017761 Tattoo: 668J
Homo. Polled Homo. Blk Purebred BD: 2-11-99 Adj. BW: 79 Adj. WW: 610

CE	BW	WW	YW	MCE	MM	MWW	STAY	CW	YG	MARB	BF	REA	API	TI
8	-0.7	26	49	3	14	27	18	-9.0	.01	.17	.02	.00	104	62

COTT Joanne 668J is a moderate framed, easy keeping, large volumed donor that has a unique pedigree. She is sired by the legendary 600U and is out of a Bold Future dam. Her pedigree, mass and freedom of movement made her a valuable asset in our donor lineup. She sells with her 3-08 bull calf by the calving ease sire, STF Smooth Sailin. He is a fancy, blazed face, clean fronted, thick-ended calf.

Circle S Leachman 600U

Landridge Jet Black

Cottonwood Cow 387F

BDV R52 Ms Black Knight

Bold Future

Cottonwood Enhanced 223C

Pasture Sire: STF Smooth Sailin on 8-5 to 9-15-08

Est. Plan Mating EPDs: 11 -.95 26 47 5 9 22 19

CW -10.9 YG -.02 Marb .26 BF .02 REA .07 API 116 TI 66

3A U92 Bull Calf Breeder: Double S Farms ASA#Pending Tattoo: U92 Dbl. Polled Blk Baldy Purebred

BD: 3-1-08 BW: 77 Sire: STS Smooth Sailin Est EPDs: 11 -.95 26 47 5 9 22 19 CW -10.9 YG -.02 Marb .26 BF .02 REA .07 API 116 TI 66

4 Selling 3 Frozen Embryos of HILCO Proud Lady 1107R x SS Ebonys Premium Blend

Breeder: Hill Country Cattle Company

Est Planned Mating EPDs

CE	BW	WW	YW	MCE	MM	MWW	STAY	CW	YG	MARB	BF	REA	API	TI
*	-.05	34	62	*	4	21	*	-.60	.18	.19	.05	-.17	105	64

SS Ebonys Premium Blend Remington Red Label HR
SOSF Ebonys Joy L-123
HILCO Proud Lady 1107R SS Black Raptor
Masterfare Pride

HILCO Proud Lady 1107R is the first SimAngus female out of our Angus donor, Masterfare Pride 1107. She was Grand Champion at the Ohio State Fair and Reserve Division Champion at the North American. Proud Lady was never beaten in class at the Ohio State Fair, Simmental Breeders Sweepstakes, the North American and Denver. She is a powerfully constructed female with plenty of width and dimension. She milked her heart out raising her first daughter in a tough drought that still made the Breeders Top Ten Sale top-selling lot at \$15,000 and is a 3/4 sibling to these eggs selling. The mating with SS Ebonys Premium Blend will bring excitement when you see this powerhouse sire on display sale day. He was Reserve Calf Champion at the National Show at the 2007 North American. He is getting more impressive every day and will be very competitive next year. This mating incorporates Ebonys Joy with the Masterfare 1107 Angus cow in the granddam spot. Cow families do make a difference! Selling three embryos, guaranteeing one pregnancy if work is done by a certified technician.



SS Ebonys Premium Blend



HILCO Grand Lady 107RT



Masterfare Pride1107

5 Selling 3 Frozen Embryos of HLC Mackenzie L76 x SS Ebonys Grand Master

Breeder: Hill Country Cattle Company

Est Planned Mating EPDs

CE	BW	WW	YW	MCE	MM	MWW	STAY	CW	YG	MARB	BF	REA	API	TI
11	-1.95	45	78	1	1	24	25	5.65	.05	-.01	.03	.13	122	71

SS Ebonys Grand Master PVF-BF BF26 Black Joker
SOSF Ebonys Joy L-123
HLC Mackenzie L76 HC Power Drive 88H
Triple C Rewards Queen

HLC Mackenzie L76 was purchased in the 2002 Denver Sale. She is sired by the infamous HC Power Drive, who needs no introduction to the Simmental breed. Her dam is Triple C Rewards Queen, who has been a featured donor for Hudak Land and Cattle and Triple C Farms, MN. Her granddam, Hart Hollywood Queen, has set the standard for Triple C and top Simmental genetics. Mackenzie started her show career being named Division Champion or Reserve seven out of nine times as a yearling at state fair and higher competitions. Although being in the hunt was extremely fun, her contribution to our program has been extremely satisfying with the influence of her legendary cow family behind her. Mackenzie has matured into a powerful donor female. Her progeny continue to be admired at the Top Ten Sales, where many have been top sellers. This mating with Grand Master combines the Ebonys Joy pedigree on top of Mackenzie's already stacked genetic makeup. Grand Master debuted his progeny at the 2008 Breeders Top Ten Sale where the top-selling female commanded \$15,000, selling to the Campbell family where she has already been named Supreme Champion at the Blue and Gold Showdown and was also a division champion at the recent Simmental Breeders Sweepstakes. Selling three embryos, guaranteeing one pregnancy if work is done by a certified technician.



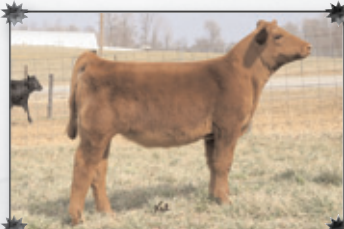
SS Ebonys Grand Master



SS Kenzies Reward RR521



SS Kenzies Queen PP250



SS Kenzies Queen RR220

Top Shelf Elite Bred Females



CLW-PVF Bitter Sweet K88



8 BRS Tess 3T88

Breeder: Black Ridge Simmentals ASA#2428111 Tattoo: 3T88
Dbl. Polled Homo. Blk 1/2 SM 1/2 AN BD: 4-3-07 Adj. BW: 82 Adj. WW: 563

CE	BW	WW	YW	MCE	MM	MWW	STAY	CW	YG	MARB	BF	REA	API	TI
*	-1.0	29	59	*	2	17	*	-12.5	.06	.30	.04	-.06	106	65

O C C Emblazon 854E D H D Traveler 6807
Dixie Erica of CH 1019
CLW-PVF Bitter Sweet K88 WLE Power Stroke
Kappes Lady Irish F88

A.I. Sire: RC Club King 040R on 5-15-08
Est. Plan Mating EPDs: * .35 38 71 * 2 21
CW 5.55 YG .13 Marb .22 BF .03 REA -.38 API 108 TI 67
Pasture Sire: SVF/NJC Mo Better M217 on 6-1 to 6-10-08

A little something different here! When we co-owned Power Drive's full sister, Bitter Sweet, the group wanted to mix it up a little, so we decided on a SimAngus flush to Emblazon. We had three of these born at Black Ridge. The bull was one of the first

of his contemporaries to sell last spring. The two females are very similar and good. I sent Val pictures of both. He selected this one for the sale and I confess he chose the showier heifer. The picture doesn't lie, Tess is fancy! She is homozygous black by pedigree.



9 IC Affirmation T9

Breeder: Indian Creek Simmentals ASA#2401801 Tattoo: T9
Dbl. Polled Blk Purebred BD: 1-30-07 Adj. BW: 85 Adj. WW: 532

CE	BW	WW	YW	MCE	MM	MWW	STAY	CW	YG	MARB	BF	REA	API	TI
3	2.1	28	51	1	5	19	16	-3.7	-.01	.10	.02	.13	86	56

STF Affirmed P44R LSS Thumper KG46
STF Dumplin 444M
Brant N3410 PVF-BF BF26 Black Joker
Brant Tenderness M2093

A.I. Sire: Hooks Shear Force on 3-31-08
Est. Plan Mating EPDs: 12 -1.6 24 48 1 13 26 22
CW -11.25 YG -.08 Marb .30 BF .03 REA .27 API 126 TI 67

T9 is a solid black heifer bred up early for a January calf to the Shear Force bull. She is very stylish and sired by the past Denver Champion, Affirmed. The Brant N3410 cow is her dam. She produced a top-selling open heifer in the first Top Shelf Sale that went to Louisiana. Good solid cow family here.



10 IC Stroke of Luck T12

Breeder: Indian Creek Simmentals ASA#2403227 Tattoo: T12
Dbl. Polled Blk Purebred BD: 2-8-07 Adj. BW: 69 ET Adj. WW: 527

A.I. Sire: Hooks Shear Force on 5-8-08
Est. Plan Mating EPDs: 16 -2.65 24 47 2 14 26 25
CW -13.05 YG -.10 Marb .39 BF .02 REA .28 API 145 TI 71

Pedigree & EPDs for Lots 10 & 10A

CE	BW	WW	YW	MCE	MM	MWW	STAY	CW	YG	MARB	BF	REA	API	TI
11	0.0	27	51	4	6	20	23	-7.3	-.05	.29	.01	.14	124	65

WLE Power Stroke Burns Bull X339U
Nichols Joliette C75
Louken Kenya 510PP CNS Dream On L186
NJC Kenna

Here is a set of bred heifers that we are really proud of. They are out of our great donor, Kenya. She has produced sale features every time - T12 and T14 are no exception. How many Power Stroke females can you buy with a lifetime still ahead of them? They are confirmed bred to Shear Force. These calves will have breed leading EPDs. These heifers are certainly perspective donors. Build your herd with predictable, productive cattle.



Hooks Shear Force



Louken Kenya 510PP

10A IC Jungle T14

Breeder: Indian Creek Simmentals ASA#2403315 Tattoo: T14
Dbl. Polled Blk Purebred BD: 2-14-07 Adj. BW: 82 ET Adj. WW: 549

A.I. Sire: Hooks Shear Force on 5-3-08
Est. Plan Mating EPDs: 16 -2.65 24 47 2 14 26 25
CW -13.05 YG -.10 Marb .39 BF .02 REA .28 API 145 TI 71



SS Grand Lady T61

Breeder: Double S Farms ASA#2404629 Tattoo: T61
Dbl. Polled Homozygous Blk Purebred BD: 3-8-07 Adj. BW: 60 Adj. WW: 732

CE	BW	WW	YW	MCE	MM	MWW	STAY	CW	YG	MARB	BF	REA	API	TI
12	-5.5	37	66	2	4	22	24	-6.4	.03	.02	.04	.10	127	72

SS Ebonys Grand Master

PVF-BF BF26 Black Joker

SOSF Ebonys Joy L-123

HHF/PF Black Lady

Black Irish Kansas

Fenton River Black Orchid

A.I. Sire: Sand Ranch Hand on 5-20-08

Est. Plan Mating EPDs: 12 -3.95 37 63 2 2 21 22

CW -5.95 YG -.03 Marb .05 BF .02 REA .11 API 120 TI 70

Pasture Sire: SS Ebonys Mastermind on 5-26 to 7-10-08

T61 is a very functional, smooth made, deep ribbed, square made daughter of the Ebonys Joy son, Grand Master. His calves are the right kind and surpassing our expectations. T61 comes from a strong cow family that is very consistent in their producing ability. She sells A.I. bred to the ABS sire Sand Ranch Hand and exposed to the homozygous black Master Mind bull.



IC Charming T16

Breeder: Indian Creek Simmentals ASA#2378220 Tattoo: T16
Dbl. Polled Blk Purebred BD: 2-17-07 Adj. BW: 91 Adj. WW: 598

CE	BW	WW	YW	MCE	MM	MWW	STAY	CW	YG	MARB	BF	REA	API	TI
6	-3.0	40	75	7	2	22	20	11.9	.02	.22	.03	.33	108	66

JDJ Charisma 20P

CNS Dream On L186

Nichols Beauty D93

IC Butterfly R14

GW Lucky Dice 187H

HBHF Lola

A.I. Sire: Hooks Shear Force on 5-12-08

Est. Plan Mating EPDs: 14 -1.15 30 51 4 12 27 24

CW -3.45 YG -.06 Marb .36 BF .03 REA .37 API 137 TI 72

T16 is a very nice, solid black bred Charisma daughter confirmed safe in calf to Shear Force. This calf will grow — check out the planned mating EPDs! T16 is moderate framed, big footed and big boned. She will be a productive cow for a long time. Calfhood vaccinated.



IC Miss Charming T18

Breeder: Indian Creek Simmentals ASA#2378221 Tattoo: T18
Dbl. Polled Blk Purebred BD: 2-23-07 Adj. BW: 90 Adj. WW: 584

CE	BW	WW	YW	MCE	MM	MWW	STAY	CW	YG	MARB	BF	REA	API	TI
4	2.9	34	61	6	6	23	21	3.0	-.02	.11	.04	.42	99	59

JDJ Charisma 20P

CNS Dream On L186

Nichols Beauty D93

JF TNT Freedom 474P

KenCo/MF Powerline 204L

TNT Miss Freedom L102

A.I. Sire: Hooks Shear Force on 3-28-08

Est. Plan Mating EPDs: 12 -1.2 28 53 3 14 28 24

CW -7.905 YG -.08 Marb .30 BF .04 REA .42 API 132 TI 69

T18 is a solid black heifer with smooth structure and bone. She should have been a show heifer. She has the great Freedom cow family in her pedigree. Bred up early to Shear Force, the planned mating EPDs are incredible. Don't miss these two breds. They will make a super addition to any purebred herd or if you are starting up a herd look at these pretty ladies. Calfhood vaccinated.



SS Candy T45

Breeder: Double S Farms ASA#2404626 Tattoo: T45
Homozygous Polled Blk Purebred BD: 3-18-07 Adj. BW: 74 Adj. WW: 680

CE	BW	WW	YW	MCE	MM	MWW	STAY	CW	YG	MARB	BF	REA	API	TI
5	1.2	30	54	3	1	16	23	-3.4	-.03	.16	.02	.26	108	61

JF BH Choice Plus 909J

BH Herks Edge 759G

Nichols Kelly 75U

SS Cotton Kandy N35K

KenCo/MF Powerline 204L

BRS Kandy Kisses K35

Pasture Sire: SS Ebonys Mastermind on 5-26 to 7-10-08

Est. Plan Mating EPDs: 7 .35 32 55 0 3 19 22

CW -4.55 YG .03 Marb .17 BF .03 REA .12 API 110 TI 64

T45 is a Choice Plus daughter out of a Powerline x Kandy Kisses female. T45 should be homozygous polled by pedigree. She sells bred to the homozygous polled, homozygous black Ebonys Mastermind bull.



15 Louken Kenna 97TT

Breeder: Louken Cattle Company ASA#2404646 Tattoo: 97TT
Polled Blk Purebred BD: 4-1-07 Adj. BW: 77 ET Adj. WW: 608

CE	BW	WW	YW	MCE	MM	MWW	STAY	CW	YG	MARB	BF	REA	API	TI
10	-0.7	29	52	5	8	22	21	-7.6	-.04	.32	.02	.19	123	67

CNS Dream On L186

Nichols Legacy G151

NJC Kenna

CNS Sheeza Dream K107W

Nichols Blk Destiny D12

NJC Gearhart

A.I. Sire: Rains Limit Up on 5-19-08

Est. Plan Mating EPDs: 14 -1.6 25 39 4 2 14 20

CW -16.7 YG -.05 Marb .09 BF .01 REA -.01 API 112 TI 60

Pasture Sire: SS Ebonys Mastermind on 5-26 to 7-10-08

97TT is a Dream On daughter out of the donor who was high-selling lot in last year's sale, NJC Kenna. She had a poor recip cow, however she has the genetic package to produce a good one. She sells A.I.'ed to the time-tested, calving ease bull Limit Up and exposed to the Master Mind bull.



NJC Kenna

16 SS Mighty Sweet T323

Breeder: Double S Farms ASA#2404631 Tattoo: T323

Polled Blk Purebred BD: 4-14-07 Adj. BW: 72 Adj. WW: 639

CE	BW	WW	YW	MCE	MM	MWW	STAY	CW	YG	MARB	BF	REA	API	TI
6	-0.2	28	53	0	9	22	20	-5.9	-.06	.18	.01	.19	107	63

Louken Next Level 28P

SAC Mr MT 73G

TR3 Miss Swee-T

NJC Kenna

HC Power Drive 88H

RCC/TCF Sweet Talk L125

Pasture Sire: SS Ebonys Mastermind on 5-26 to 7-10-08

Est. Plan Mating EPDs: 7 -0.4 30 54 -1 7 22 21

CW -5.8 YG .02 Marb .18 BF .03 REA .08 API 110 TI 65

T323 is a moderate framed daughter of the Next Level bull and a granddaughter of the Sweet Temptation donor. She sells bred to the Ebonys Joy son — SS Ebonys Mastermind.



TR3 Miss Swee-T

17 SS Kazam T401

Breeder: Double S Farms ASA#2404612 Tattoo: T401

Dbl. Polled Blk Purebred BD: 3-7-07 Adj. BW: 79 Adj. WW: 743

CE	BW	WW	YW	MCE	MM	MWW	STAY	CW	YG	MARB	BF	REA	API	TI
8	0.9	27	46	-3	5	19	19	-9.2	-.03	.12	.00	-.05	100	59

Louken Next Level 28P

SAC Mr MT 73G

SS Ms Kazam P129

NJC Kenna

SS Money Maker J1J

Triple C Allakazam L62Y

A.I. Sire: SS Ebonys Grandmaster on 5-22-08

Est. Plan Mating EPDs: 12 -3.3 42 70 -3 4 25 23

CW -1.2 YG .03 Marb .01 BF .03 REA .07 API 120 TI 72

Pasture Sire: SS Ebonys Mastermind on 5-26 to 7-10-08

T401 is a daughter of the Next Level bull and out of a Money Maker daughter going back to a Full Figures cow. She sells A.I.'ed to Ebonys Grand Master, the calving ease bull that sired the \$15,000 top-selling heifer in the spring sale.



Louken Next Level 28P

18 SS Camella T42

Breeder: Double S Farms ASA#2404632 Tattoo: T42

Dbl. Polled Blk Purebred BD: 4-19-07 Adj. BW: 79 Adj. WW: 702

CE	BW	WW	YW	MCE	MM	MWW	STAY	CW	YG	MARB	BF	REA	API	TI
6	1.6	32	52	-1	8	24	19	-4.3	-.03	.14	.00	.03	100	62

Louken Next Level 28P

SAC Mr MT 73G

SS Ms Camella PP3

NJC Kenna

WLE Influence

Circle A Miss Cammy

A.I. Sire: SS Ebonys Grandmaster on 5-22-08

Est. Plan Mating EPDs: 11 -3.0 45 74 -2 6 28 23

CW 1.3 YG .03 Marb .02 BF .03 REA .11 API 120 TI 74

Pasture Sire: SS Ebonys Mastermind on 5-26 to 7-10-08

T42 is a daughter of the Next Level herd sire and an Influence x Circle A Cammy daughter. She sells bred by AI to the calving ease Ebonys Grand Master and exposed to Ebonys Master Mind.



19 IC Thumper S10

Breeder: Indian Creek Simmentals ASA#2369160 Tattoo: S10
Dbl. Polled Red Purebred BD: 1-26-06 Adj. BW: 78

SS/RS&T Mr. Thumper N17

LSS Thumper KG46
ETR Ms Belle L17
GFI Black Classic H160
GFI Shania F80

GFI Shania M81

A.I. Sire: JF Shock & Awe 6207S on 6-7-08
Est. Plan Mating EPDs: 6 -0.1 34 62 2 3 20 22
CW -0.7 YG .02 Marb .14 BF .03 REA .14 API 110 TI 66
Pasture Sire: Kenco/MF Powerline 204L on 6-10 to 7-21-08
Pasture Sire: SS Ebonys Masterwork on 7-21 to 8-24-08

CNS Dream On L186

Nichols Legacy G151
CNS Sheeza Dream K107W
SAC Mr MT 73G
ECCO Ms Mick 010C

A.I. Sire: TCF Power Drive R2411 on 5-18-08
Est. Plan Mating EPDs: 10 1.9 30 56 3 6 22 21
CW -1.3 YG .00 Marb .21 BF .02 REA .11 API 112 TI 63
Pasture Sire: Kenco/MF Powerline 204L on 6-10 to 7-21-08
Pasture Sire: SS Ebonys Masterwork on 7-21 to 8-24-08

TC Total 410

Bon View New Design 208
TC Erica Eileen 2047
Nichols Legacy G151
JJ Shesa Daisy

JJ Shesa Legace Too 54R

Pasture Sire: Kenco/MF Powerline 204L on 6-10 to 8-24-08
Est. Plan Mating EPDs: Will be available sale day.

20 IC Eliza S22

Breeder: Indian Creek Simmentals ASA#2334547 Tattoo: S22
Dbl. Polled Blk Purebred BD: 3-2-06 Adj. BW: 79 Adj. WW: 580

CNS Dream On L186

Nichols Legacy G151
CNS Sheeza Dream K107W
SAC Mr MT 73G
ECCO Ms Mick 010C

A.I. Sire: TCF Power Drive R2411 on 5-18-08
Est. Plan Mating EPDs: 10 1.9 30 56 3 6 22 21
CW -1.3 YG .00 Marb .21 BF .02 REA .11 API 112 TI 63
Pasture Sire: Kenco/MF Powerline 204L on 6-10 to 7-21-08
Pasture Sire: SS Ebonys Masterwork on 7-21 to 8-24-08

TC Total 410

Bon View New Design 208
TC Erica Eileen 2047
Nichols Legacy G151
JJ Shesa Daisy

JJ Shesa Legace Too 54R

Pasture Sire: Kenco/MF Powerline 204L on 6-10 to 8-24-08
Est. Plan Mating EPDs: Will be available sale day.

21 IC Totally Hot T25

Breeder: Indian Creek Simmentals ASA#Pending Tattoo: T25
Polled Blk 1/2 SM 1/2 AN BD: 4-7-07 Adj. BW: 68 Adj. WW: 578

CNS Dream On L186

Nichols Legacy G151
CNS Sheeza Dream K107W
SAC Mr MT 73G
ECCO Ms Mick 010C

A.I. Sire: TCF Power Drive R2411 on 5-18-08
Est. Plan Mating EPDs: 10 1.9 30 56 3 6 22 21
CW -1.3 YG .00 Marb .21 BF .02 REA .11 API 112 TI 63
Pasture Sire: Kenco/MF Powerline 204L on 6-10 to 7-21-08
Pasture Sire: SS Ebonys Masterwork on 7-21 to 8-24-08

TC Total 410

Bon View New Design 208
TC Erica Eileen 2047
Nichols Legacy G151
JJ Shesa Daisy

JJ Shesa Legace Too 54R

Pasture Sire: Kenco/MF Powerline 204L on 6-10 to 8-24-08
Est. Plan Mating EPDs: Will be available sale day.

CE	BW	WW	YW	MCE	MM	MWW	STAY	CW	YG	MARB	BF	REA	API	TI
10	0.7	30	49	2	6	21	20	-7.4	.00	.32	.02	.07	117	65

S22 is a moderate framed, solid black cow with a fantastic pedigree. She calved before her second birthday and raised a fat calf. She will be a money maker for years to come.



21 IC Totally Hot T25

Breeder: Indian Creek Simmentals ASA#Pending Tattoo: T25
Polled Blk 1/2 SM 1/2 AN BD: 4-7-07 Adj. BW: 68 Adj. WW: 578

CNS Dream On L186

Nichols Legacy G151
CNS Sheeza Dream K107W
SAC Mr MT 73G
ECCO Ms Mick 010C

A.I. Sire: TCF Power Drive R2411 on 5-18-08
Est. Plan Mating EPDs: 10 1.9 30 56 3 6 22 21
CW -1.3 YG .00 Marb .21 BF .02 REA .11 API 112 TI 63
Pasture Sire: Kenco/MF Powerline 204L on 6-10 to 7-21-08
Pasture Sire: SS Ebonys Masterwork on 7-21 to 8-24-08

TC Total 410

Bon View New Design 208
TC Erica Eileen 2047
Nichols Legacy G151
JJ Shesa Daisy

JJ Shesa Legace Too 54R

Pasture Sire: Kenco/MF Powerline 204L on 6-10 to 8-24-08
Est. Plan Mating EPDs: Will be available sale day.

CE	BW	WW	YW	MCE	MM	MWW	STAY	CW	YG	MARB	BF	REA	API	TI
*	-1.4	40	80	*	16	36	-	8.5	.22	.49	.06	-.15	125	77

T25 is a super SimAngus heifer that will really work. She is the commercial cowboy's kind. Her mother is a maternal sib to the best milking cow in the IC herd. Solid black with solid EPDs — look at the BW, WW, YW and MM — you can't miss on this gal.

22 IC Thumper S23

Breeder: Indian Creek Simmentals ASA#2369161 Tattoo: S23
Polled Blk Purebred BD: 3-3-06 Adj. BW: 88 Adj. WW: 548

SS/RS&T Mr. Thumper N17

LSS Thumper KG46
ETR Ms Belle L17
Black Max
Burns Cow X227

Burns Cow C227

Pasture Sire: Kenco/MF Powerline 204L on 6-10 to 7-21-08
Est. Plan Mating EPDs: 2 3.4 36 65 4 6 24 20
CW 6.3 YG -.04 Marb .11 BF .02 REA .32 API 95 TI 61
Pasture Sire: SS Ebonys Masterwork on 7-21 to 8-24-08

CE	BW	WW	YW	MCE	MM	MWW	STAY	CW	YG	MARB	BF	REA	API	TI
2	3.7	35	57	2	1	19	19	1.3	.05	.16	.01	-.07	94	59

S23 is a solid black young cow that will be a pound maker for years. She sells bred to Powerline, and this mating will be exciting.

23 K&P Miss MT KPOS

Breeder: Indian Creek Simmentals ASA#2334328 Tattoo: KPOS
Dbl. Polled Blk Purebred BD: 3-8-06 Adj. BW: 79 ET Adj. WW: 638

SAC Mr MT 73G

GW Mr. Maternal 057D
SPC Miss Tailer 47C
PS Dbl Down Bubba
Crums The One 407D

073G

Pasture Sire: SS Ebonys Masterwork on 11-18 to 12-26-07
Est. Plan Mating EPDs: 5 1.4 26 48 -2 7 19 18
CW -9.3 YG .01 Marb -.04 BF .05 REA .09 API 86 TI 54

CE	BW	WW	YW	MCE	MM	MWW	STAY	CW	YG	MARB	BF	REA	API	TI
5	2.0	27	41	-5	1	15	14	-10.5	-.01	.10	.01	-.03	83	55

KPOS is a nice young cow that should calve before sale day. The Masterwork calves have been very exciting, and this mating will really work. Masterwork is a son of the great SOSF Ebonys Joy.

24 IC Miss Viper S34

Breeder: Crossley Family ASA#2334556 Tattoo: S34
Polled Blk Baldy Purebred BD: 4-28-06 Adj. BW: 78 Adj. WW: 641

SAC Mr MT 73G

GW Mr. Maternal 057D
SPC Miss Tailer 47C
PS Dbl Down Bubba
Crums The One 407D

073G

Pasture Sire: SS Ebonys Masterwork on 11-18 to 12-26-07
Est. Plan Mating EPDs: 5 1.4 26 48 -2 7 19 18
CW -9.3 YG .01 Marb -.04 BF .05 REA .09 API 86 TI 54

CE	BW	WW	YW	MCE	MM	MWW	STAY	CW	YG	MARB	BF	REA	API	TI
7	2.7	36	61	3	4	22	17	2.9	.05	.16	.01	-.03	98	62

JJ/TRS Viper G6N

JJ E-mail 7K

IC 600US Darlene G5

KCF Lorin 6G

Circle S Leachman 600U

SCC Michele

A.I. Sire: Nichols Legacy G151 on 7-24-08
Est. Plan Mating EPDs: 8 0.7 32 56 4 5 21 20
CW -3.6 YG -.03 Marb .27 BF .01 REA .10 API 115 TI 67

This young baldy cow has a super nice udder. Her calf proves what a great job she does. Here is an easy keeping cow with the power to produce pounds. She is halter broke.



24A Red Viper U94

Breeder: Crossley Family ASA#2429936 Tattoo: U94
Dbl. Polled Red Purebred BD: 3-24-08 Adj. BW: 72 Adj. WW: 637

Los 24 A

EPDs: 12 -1.3 28 53 1 13 27 22
CW -8.0 YG -.04 Marb .33 BF .02 REA .19 API 130 TI 69

U94 is a flashy, thick solid red heifer that has plenty of bone and grow. Look at the curve bending calving ease and growth numbers on this heifer. She has an outcross pedigree that will work in any progressive purebred herd.





SOSF Miss MO S21

Breeder: Indian Creek Simmentals ASA#2383598 Tattoo: S21
Dbl. Polled Blk Purebred BD: 10-1-06 Adj. BW: 78 Adj. WW: 632

SVF/NJC Mo Better M217

STF Mr Momentum H508

Miss HHF Prissy P30

NJC SVF Antoinette K205

BF L112 Trailblazer

BOZ Miss D432

CE	BW	WW	YW	MCE	MM	MWW	STAY	CW	YG	MARB	BF	REA	API	TI
7	1.9	38	76	4	8	27	22	11.0	.12	.21	.02	-.09	115	68

Pasture Sire: Kenco/MF Powerline 204L on 6-10 to 8-26-08

Est. Plan Mating EPDs: 4 2.5 38 75 5 9 28 22

CW 11.2 YG .00 Marb .13 BF .02 REA .31 API 105 TI 65

S21's outcross pedigree will allow a progressive breeder to mate her with many different bulls. She is a strong heifer in her own right with nice length of body, good bone structure and stands on a solid foot. This nice heifer sells bred to a great bull, and check out the planned mating EPDs.



IC Sunny S74

Breeder: Indian Creek Simmentals ASA#2365390 Tattoo: S74
Polled Blk Purebred BD: 12-11-06 Adj. BW: 79 Adj. WW: 595

CE	BW	WW	YW	MCE	MM	MWW	STAY	CW	YG	MARB	BF	REA	API	TI
4	0.7	28	52	-1	6	20	23	-5.7	-.02	-.12	.02	.15	92	52

PVF-BF BF26 Black Joker

Harts Black Casino B408

Anvil Acres Sunny Delite

PVF-BF Mabelle C131

Westfall Crossfire 639L

Cooks McMolly

A.I. Sire: GWS Ebony's Trademark 6N on 2-21-08

Est. Plan Mating EPDs: 7 0.8 53 2 10 25 22

CW -4.7 YG -.04 Marb -.05 BF .03 REA .23 API 99 TI 58

S74 is a solid black heifer that has power and growth built right into her pedigree. She sells safe to the calving ease bull GWS Trademark. This heifer is out of the most tame cow in the IC herd, and Sunny is easy to work with. This is the kind of beef cow every cowboy should own.



SS Blk Lass S210S

Breeder: Double S Farms ASA#2403204 Tattoo: S210S
Polled Blk 1/2 SM 1/4 MX 1/4 AN BD: 12-1-06 Adj. BW: 75 Adj. WW: 629

CE	BW	WW	YW	MCE	MM	MWW	STAY	CW	YG	MARB	BF	REA	API	TI
*	0.1	29	52	*	0	15	-	-	-	-	-	-	-	-

Triple C Power Plus N23L

HC Power Drive 88H

1210

Triple C Shiney L23D

Pasture Sire: STF Smooth Sailin 151S on 2-21 to 3-24-08

Est. Plan Mating EPDs: * -0.6 28 49 * 2 16 -

CW - YG - Marb - BF - REA - API - TI -

Pasture Sire: SS Ebony's Mastermind on 3-25 to 7-10-08

S210S is a well balanced halfblood daughter of Power Plus selling exposed to Smooth Sailin and, then, to Ebony's Master Mind.



Triple C Power Plus N23L



SS Blk Lass S518S

Breeder: Double S Farms ASA#2403206 Tattoo: S518S
Polled Blk 3/4 SM 1/8 CS 1/8 AN BD: 12-2-06 Adj. BW: 76 Adj. WW: 636

Triple C Power Plus N23L

HC Power Drive 88H

1518

Triple C Shiney L23D

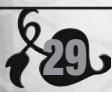
Pasture Sire: STF Smooth Sailin 151S on 2-21 to 3-24-08

Est. Plan Mating EPDs: * -0.2 30 52 * 3 18 -

CW - YG - Marb - BF - REA - API - TI -

Pasture Sire: SS Ebony's Mastermind on 3-25 to 7-10-08

S518S is a thick ended, clean made SimAngus daughter of the Power Plus herd sire and sells exposed to Smooth Sailin and, then, to Ebony's Master Mind.



SS Blk Lass S525S

Breeder: Double S Farms ASA#2403207 Tattoo: S525S
Dbl. Polled Blk 3/4 SM 1/4 AN BD: 12-2-06 Adj. BW: 78 Adj. WW: 609

Triple C Power Plus N23L

HC Power Drive 88H

SS Lass 205L

Triple C Shiney L23D

GW Lucky Strike 147G

205

Pasture Sire: STF Smooth Sailin 151S on 2-21 to 3-24-08

Est. Plan Mating EPDs: 8 -0.2 28 49 5 3 17 -

CW -8.3 YG -.04 Marb .30 BF .03 REA .21 API 109 TI 63

Pasture Sire: SS Ebony's Mastermind on 3-25 to 7-10-08

S525S is a long sided, smooth made, feminine fronted daughter of Power Plus and out of a very good cow family. She sells exposed to Smooth Sailin and, then, to Ebony's Master Mind.



SS Blk Lass S531S

Breeder: Double S Farms ASA#2403205 Tattoo: S531S
Polled Blk 1/2 SM 1/4 CS 1/4 AN BD: 12-1-06 Adj. BW: 80 Adj. WW: 636

Triple C Power Plus N23L

HC Power Drive 88H

1531

Triple C Shiney L23D

Pasture Sire: STF Smooth Sailin 151S on 2-21 to 3-24-08

Est. Plan Mating EPDs: * 0.2 31 53 * 3 19 -

CW - YG - Marb - BF - REA - API - TI -

Pasture Sire: SS Ebony's Mastermind on 3-25 to 7-10-08

S531S is a very nicely balanced, thick ended female sired by Power Plus. She sells exposed to Smooth Sailin and, then, to Ebony's Master Mind.



SS Ms Zamie S401

Breeder: Double S Farms ASA#2345873 Tattoo: S401
Dbl. Polled Blk Purebred BD: 4-1-06 Adj. BW: 77 Adj. WW: 558

CE	BW	WW	YW	MCE	MM	MWW	STAY	CW	YG	MARB	BF	REA	API	TI
9	0.9	30	50	0	3	18	19	-6.9	.06	.06	-.01	-.34	98	59

WLE Influence

SAC Mr MT 73G

WLE Joliette

SS Ms Kazam P129

SS Money Maker J1J

Triple C Allkazam L62Y

Pasture Sire: SS Ebonys Mastermind on 3-25 to 7-10-08

Est. Plan Mating EPDs: 8 0.2 31 52 -1 4 20 20

CW -6.3 YG .08 Marb .12 BF .02 REA -.19 API 105 TI 63

S401 is a very functional, moderate framed daughter of Influence and out of a Money Maker daughter that goes back to a Full Figures cow. She sells bred to the Ebonys Joy son Master Mind.



WLE Influence



IC Miss Power S63

Breeder: Indian Creek Simmentals ASA#2365383 Tattoo: S63
Scurred Blk Baldy Purebred BD: 11-1-06 Adj. BW: 82 Adj. WW: 603

CE	BW	WW	YW	MCE	MM	MWW	STAY	CW	YG	MARB	BF	REA	API	TI
4	1.1	20	39	3	3	13	19	-12.2	-.05	.06	-.01	-.08	91	51

Triple C Ultimate Power

HC Power Drive 88H

Hart Hollywood Queen E700

IC Sensation H339

Meyers Blacktop 206Y

Burns Cow X339

A.I. Sire: Name on BAR EXT Traveler 205 on 12-29-07

Est. Plan Mating EPDs: * -2.0 20 46 * 15 25 -

CW -12.8 YG .13 Marb .32 BF .05 REA -.22 API 108 TI 60

S63 is a nice black blaze face heifer that goes back to one of the best milking cows ever in the IC herd, Burns Cow X339. We have sold many of these heifers bred to the calving ease specialist BAR EXT, everyone has been very pleased. She will calve shortly after the sale. The homework is done on this heifer.



SS Vanna S139

Breeder: Double S Farms ASA#2403191 Tattoo: S139
Dbl. Polled Homozygous Blk 3/4 SM 1/4 AN BD: 10-22-06 Adj. BW: 76 Adj. WW: 580

CE	BW	WW	YW	MCE	MM	MWW	STAY	CW	YG	MARB	BF	REA	API	TI
*	0.7	22	46	*	4	15	-	-8.9	.14	.40	.03	-.32	102	60

KS Duramax M814

Alberda Traveler 416

KS Britta K140

SS Vanna L43

JF BH Choice Plus 909J

SS Savannah 575D

A.I. Sire: Black Irish Kansas on 11-28-07

Est. Plan Mating EPDs: * -0.7 24 52 * 3 15 -

CW -7.5 YG .05 Marb .19 BF .02 REA -.13 API 104 TI 60

Pasture Sire: SS Ebonys Day Dream on 12-23-07 to 2-19-08

Pasture Sire: SS Ebonys Mastermind on 3-25 to 7-10-08

S139 is a three-quarterblood female sired by our SimAngus herd sire, KS Duramax, and out of a Choice Plus daughter that goes back to one of the original donors at Double S, SS Savannah. She sells A.I.'ed to the old stand by Black Irish Kansas for a no worries calving.



SS Joanne SS243

Breeder: Double S Farms ASA#2403174 Tattoo: SS243
Dbl. Polled Homozgous Blk Purebred BD: 10-12-06 Adj. BW: 80 ET Adj. WW: 589

CE	BW	WW	YW	MCE	MM	MWW	STAY	CW	YG	MARB	BF	REA	API	TI
7	0.1	31	54	2	8	23	18	-5.3	.06	.15	.01	-.19	102	62

WLE Influence

SAC Mr MT 73G

WLE Joliette

COTT Joanne 668J

Circle S Leachman 600U

Cottonwood Cow 387F

A.I. Sire: Hooks Pacesetter 8P on 11-28-07

Est. Plan Mating EPDs: 11 -0.7 28 54 2 10 24 20

CW -6.5 YG .02 Marb .10 BF .02 REA -.01 API 109 TI 63

Pasture Sire: SS Ebonys Day Dream on 12-23-07 to 2-19-08

Pasture Sire: SS Ebonys Mastermind on 3-25 to 7-10-08

SS243 is a solid black, outcross pedigree, functional female with a nice look about her. She is sired by the Influence bull and out of the COTT Joanne donor. She sells A.I.'ed to Hooks Pacesetter.



COTT Joanne 668J



35 SS Jackie S203

Breeder: Double S Farms ASA#2403187 Tattoo: S203
 Dbl. Polled Homozygous Blk Purebred BD: 10-28-06 Adj. BW: 72 Adj. WW: 664

CE	BW	WW	YW	MCE	MM	MWW	STAY	CW	YG	MARB	BF	REA	API	TI
6	-0.1	36	58	2	0	18	20	-3.4	.08	.17	.01	-.21	108	64

WLE Influence SAC Mr MT 73G
 WLE Jollette
 SS Forever Jackie M950 JF BH Choice Plus 909J
 SS Forever Lady J40

A.I. Sire: SS Ebonys Grandmaster on 11-30-07
 Est. Plan Mating EPDs: 11 -3.8 47 76 0 2 23
 CW 1.8 YG .09 Marb .04 BF .03 REA -.01 API 124 TI 76
 Pasture Sire: STF Smooth Sailin 151S on 12-23-07 to 2-19-08
 Pasture Sire: SS Ebonys Mastermind on 3-25 to 7-10-08

S203 is a smooth designed, long bodied, clean made daughter of Influence and out of a Choice Plus daughter that goes back to the Black Jackie donor. She sells bred AI to the Ebonys Joy son Grand Master whose new EPD proof put him in the top 1% of the breed for calving ease, birth weight, weaning weight, yearling weight, API and TI. She was pasture exposed to Smooth Sailin.



36 SS Blk Lass S251S

Breeder: Double S Farms ASA#2403194 Tattoo: S251S
 Polled Blk Baldy 1/2 SM 1/2 MX BD: 10-30-06 Adj. BW: 75 Adj. WW: 680

CE	BW	WW	YW	MCE	MM	MWW	STAY	CW	YG	MARB	BF	REA	API	TI
*	0.2	24	40	*	-3	9	-	-	-	-	-	-	-	-

JF BH Choice Plus 909J BH Black Herks Edge 759G
 Nichols Kelly 75U
 1251

A.I. Sire: SS Undreamabull R308 on 11-30-07
 Est. Plan Mating EPDs: * 0.7 31 51 * 2 17 -
 CW - YG - Marb - BF - REA - API - TI -
 Pasture Sire: STF Smooth Sailin 151S on 12-23-07 to 2-19-08
 Pasture Sire: SS Ebonys Mastermind on 3-25 to 7-10-08

S251S is certainly one of the fanciest females in the offering. She is as clean fronted of a female as you would want. This black baldy halfblood, sired by Choice Plus, sells A.I.'ed to SS Undreamabull and exposed to Smooth Sailin. Either mating should be homozygous pretty.



37 SS Red Betty S52

Breeder: Double S Farms ASA#2403172 Tattoo: S52
 Dbl. Polled Red Purebred BD: 10-8-06 Adj. BW: 80 Adj. WW: 581

CE	BW	WW	YW	MCE	MM	MWW	STAY	CW	YG	MARB	BF	REA	API	TI
7	1.6	29	50	2	3	18	17	-5.3	.04	.13	.00	-.19	95	58

WLE Influence SAC Mr MT 73G
 WLE Jollette
 Forever Farms Libby Circle S Leachman 600U
 PT Miss Kathy

A.I. Sire: Hooks Pacesetter 8P on 11-30-07
 Est. Plan Mating EPDs: 12 0.1 27 52 1 8 22 19
 CW -6.5 YG .01 Marb .09 BF .02 REA -.01 API 105 TI 61
 Pasture Sire: SS Ebonys Day Dream on 12-23-07 to 2-19-08
 Pasture Sire: SS Ebonys Mastermind on 3-25 to 7-10-08

S52 is a solid red Influence daughter out of a very productive 600U cow. She is a moderate framed, broody, deep flanked cow prospect selling A.I.'ed to the homozygous black, calving ease bull Hooks Pacesetter.



38 SS Joanna SS519

Breeder: Double S Farms ASA#2403181 Tattoo: SS519
 Dbl. Polled Blk Baldy Purebred BD: 11-8-06 Adj. BW: 78 ET Adj. WW: 656

CE	BW	WW	YW	MCE	MM	MWW	STAY	CW	YG	MARB	BF	REA	API	TI
7	0.1	31	54	2	8	23	18	-5.3	.06	.15	.01	-.19	102	62

WLE Influence SAC Mr MT 73G
 WLE Jollette
 COTT Joanne 668J Circle S Leachman 600U
 Cottonwood Cow 387F

A.I. Sire: Sand Ranch Hand on 12-23-07
 Est. Plan Mating EPDs: 9 -1.2 34 57 2 4 21 19
 CW -5.4 YG -.01 Marb .11 BF .00 REA -.04 API 108 TI 66
 Pasture Sire: SS Ebonys Day Dream on 1-12 to 2-19-08
 Pasture Sire: SS Ebonys Mastermind on 3-25 to 7-10-08

SS519 is a really attractive black baldy daughter of Influence and out of the donor COTT Joanne 668J. She is a square made, moderate framed outcross female to most of the popular bulls today. With Bold Future in her pedigree, she should stay sound and functional for many years to come. She sells A.I.'ed to the Ranch Hand bull that is proving to be a real easy calver across the country.

39 SS Level Lady S30

Breeder: Double S Farms ASA#2403177 Tattoo: S30
 Dbl. Polled Blk Purebred BD: 11-1-06 Adj. BW: 78 Adj. WW: 639

CE	BW	WW	YW	MCE	MM	MWW	STAY	CW	YG	MARB	BF	REA	API	TI
6	0.7	27	46	-4	9	22	17	-8.9	.00	.09	.00	-.10	93	57

Louken Next Level 28P

SAC Mr MT 73G

NJC Kenna

SS Ebbies Lady N33

SS Money Maker JIJ

Eblen Cow EC13

Pasture Sire: SS Ebonys Day Dream on 1-12 to 2-19-08
 Est. Plan Mating EPDs: 9 -0.8 32 55 1 7 23 19
 CW -5.9 YG .05 Marb .20 BF .03 REA -.01 API 111 TI 67
 Pasture Sire: SS Ebonys Mastermind on 3-25 to 7-10-08

S30 is a soft made, functional, wide sprung daughter of Next Level and out of a daughter the old Eblen Cow EC13 (Ebbie) that sold many high-selling lots through this sale a few years back. We only were able to keep a couple of daughters due to their high demand at the time. She sells bred to the Ebonys Joy son Day Dream.



40 SS Anna Jo SS517

Breeder: Double S Farms ASA#2403182 Tattoo: SS517
 Dbl. Polled Blk Purebred BD: 11-10-06 Adj. BW: 76 ET Adj. WW: 672

CE	BW	WW	YW	MCE	MM	MWW	STAY	CW	YG	MARB	BF	REA	API	TI
7	0.1	31	54	2	8	23	18	-5.3	.06	.15	.01	-.19	102	62

WLE Influence

SAC Mr MT 73G

WLE Joliette

COTT Joanne 668J

Circle S Leachman 600U

Cottonwood Cow 387F

A.I. Sire: Hooks Pacesetter 8P on 12-28-07
 Est. Plan Mating EPDs: 11 -0.7 28 54 2 10 24 20
 CW -6.5 YG .02 Marb .10 BF .02 REA -.01 API 109 TI 63
 Pasture Sire: SS Ebonys Day Dream on 1-12 to 2-19-08
 Pasture Sire: SS Ebonys Mastermind on 3-25 to 7-10-08

SS517 is a long bodied, smooth made, solid black, attractive female sire by Influence and out of our donor COTT Joanne 668J. She is backed by the maternal influences of 47C and Joliette cow families with Mr. MT, 600U and Bold Future in the mix. She sells A.I.'ed to Hooks Pacesetter.



41 SS Blk Lass S241S

Breeder: Double S Farms ASA#2403197 Tattoo: S241S
 Polled Blk 1/2 SM 1/4 MX 1/4 AN BD: 11-5-06 Adj. BW: 80 Adj. WW: 643

CE	BW	WW	YW	MCE	MM	MWW	STAY	CW	YG	MARB	BF	REA	API	TI
*	1.3	26	43	*	-7	6	-	-	-	-	-	-	-	-

JF BH Choice Plus 909J

BH Black Herks Edge 759G

Nichols Kelly 75U

1241

Pasture Sire: SS Ebonys Mastermind on 3-25 to 7-10-08
 Est. Plan Mating EPDs: * 0.4 29 49 * -1 14 -
 CW - YG - Marb - BF - REA - API - TI -

S241S is a daughter of Choice Plus and is a full sister to the Megan Fields' heifer that was a class winner at the North American Jr. Show. She sells bred to Ebonys Master Mind.



42 SS Shameless S101

Breeder: Double S Farms ASA#2403190 Tattoo: S101
 Dbl. Polled Blk 3/4 SM 1/4 AN BD: 10-22-08 Adj. BW: 72 Adj. WW: 608

CE	BW	WW	YW	MCE	MM	MWW	STAY	CW	YG	MARB	BF	REA	API	TI
*	0.0	25	48	*	3	16	-	-8.8	.15	.37	.04	-.25	107	63

S101 is a three-quarterblood female sired by our SimAngus herd sire KS Duramax and out of a daughter of our former donor BTS Shameless. She sells A.I.'ed to WLE Influence.

KS Duramax M814

Alberda Traveler 416

SS Shameless LL31

KS Britta K140

BH Black Herks Edge 759G

BTS Shameless H803

A.I. Sire: WLE Influence on 12-16-07
 Est. Plan Mating EPDs: * 0.5 30 53 * 3 18 -
 CW -5.1 YG .13 Marb .25 BF .02 REA -.31 API 103 TI 62
 Pasture Sire: SS Ebonys Day Dream on 12-23-07 to 2-19-08
 Pasture Sire: SS Ebonys Mastermind on 3-25 to 7-10-08

43 SS Blk Lass S501S

Breeder: Double S Farms ASA#2403201 Tattoo: S501S
 Polled Blk 1/2 SM 1/4 CS 1/4 AN BD: 11-16-06 Adj. BW: 75 Adj. WW: 650

CE	BW	WW	YW	MCE	MM	MWW	STAY	CW	YG	MARB	BF	REA	API	TI
*	0.8	26	43	*	-7	6	-	-	-	-	-	-	-	-

S501S is a halfblood SimAngus female sired by Choice Plus. She sells bred to the Ebonys Joy son Day Dream.

JF BH Choice Plus 909J

BH Black Herks Edge 759G

1501

Nichols Kelly 75U

Pasture Sire: SS Ebonys Day Dream on 12-23-07 to 2-19-08
 Est. Plan Mating EPDs: * -0.7 31 54 * 0 15
 CW - YG - Marb - BF - REA - API - TI -
 Pasture Sire: SS Ebonys Mastermind on 3-25 to 7-10-08



JF BH Choice Plus 909J

44 SS Blk Lass S247S

Breeder: Double S Farms ASA#2403193 Tattoo: S247S
 Polled Blk 1/2 SM 1/2 MX BD: 10-29-08 Adj. BW: 78 Adj. WW: 642

CE	BW	WW	YW	MCE	MM	MWW	STAY	CW	YG	MARB	BF	REA	API	TI
*	1.0	25	41	*	-7	6	-	-	-	-	-	-	-	-

JF BH Choice Plus 909J BH Black Herks Edge 759G
 Nichols Kelly 75U

1247

Pasture Sire: SS Ebonys Mastermind on 3-24 to 7-10-08
 Est. Plan Mating EPDs: * 0.3 29 48 * -1 14 -
 CW - YG - Marb - BF - REA - API - TI -

This SimAngus female is moderate in her frame and easy in keeping ability. Mated to Master Mind should produce an attractive calf with the same easy fleshing ability.



45 SS Blk Lass S275S

Breeder: Double S Farms ASA#2403195 Tattoo: S275S
 Polled Blk 1/2 SM 1/4 MX 1/4 AN BD: 11-2-06 Adj. BW: 76 Adj. WW: 634

CE	BW	WW	YW	MCE	MM	MWW	STAY	CW	YG	MARB	BF	REA	API	TI
*	0.4	24	40	*	-5	6	-	-	-	-	-	-	-	-

JF BH Choice Plus 909J BH Black Herks Edge 759G
 Nichols Kelly 75U

1275

Pasture Sire: SS Ebonys Mastermind on 3-24 to 7-10-08
 Est. Plan Mating EPDs: * -0.1 28 48 * 0 14 -
 CW - YG - Marb - BF - REA - API - TI -

S275S is another eye appealing daughter of Choice Plus. This SimAngus female sells bred to Master Mind who is a son of the Ebonys Joy donor.

46 SS Blk Lass S506S

Breeder: Double S Farms ASA#2403192 Tattoo: S506S
 Polled Blk 1/2 SM 1/2 MX BD: 10-26-06 Adj. BW: 75 Adj. WW: 628

JF BH Choice Plus 909J BH Black Herks Edge 759G
 Nichols Kelly 75U

1506

Pasture Sire: SS Ebonys Mastermind on 3-24 to 7-10-08
 Est. Plan Mating EPDs: * -0.2 28 46 * 0 14 -
 CW - YG - Marb - BF - REA - API - TI -

CE	BW	WW	YW	MCE	MM	MWW	STAY	CW	YG	MARB	BF	REA	API	TI
*	0.1	23	37	*	-5	6	-	-	-	-	-	-	-	-

S506S is a halfblood daughter of Choice Plus selling bred to the Mr. MT son of Ebonys Joy, SS Ebonys Master Mind.

47 SS Blk Lass S505S

Breeder: Double S Farms ASA#2403202 Tattoo: S505S
 Dbl. Polled Blk 3/4 SM 1/4 AN BD: 11-17-06 Adj. BW: 80 Adj. WW: 641

JF BH Choice Plus 909J BH Black Herks Edge 759G
 Nichols Kelly 75U

SS Blk Lass 1505M GW Lucky Strike 147G
 505

Pasture Sire: SS Ebonys Day Dream on 12-23-07 to 2-19-08
 Est. Plan Mating EPDs: 9 -0.4 32 57 5 0 16 -
 CW -4.6 YG .05 Marb .25 BF .04 REA .11 API 111 TI 66
 Pasture Sire: SS Ebonys Mastermind on 3-25 to 7-10-08

CE	BW	WW	YW	MCE	MM	MWW	STAY	CW	YG	MARB	BF	REA	API	TI
6	1.4	28	49	2	-6	9	-	-6.3	.01	.20	.03	.13	95	58

S505S is a really nice female sired by Choice Plus and out of a Lucky Strike daughter. She sells bred to the Dream On x Ebonys Joy son, SS Ebonys Day Dream.

48 SS Blk Lass S35S

Breeder: Double S Farms ASA#2403198 Tattoo: S35S
 Polled Blk 1/2 SM 3/8 AN 1/8 CS BD: 11-5-06 Adj. BW: 82 Adj. WW: 630

MCH Maximus LB K45 GW Lucky Break 047G
 GW Miss Tailor Made 374C

1035

Pasture Sire: STF Smooth Sailin 151S on 12-23-07 to 2-19-08
 Est. Plan Mating EPDs: * 0.1 25 43 * 2 14 -
 CW - YG - Marb - BF - REA - API - TI -
 Pasture Sire: SS Ebonys Mastermind on 3-25 to 7-10-08

CE	BW	WW	YW	MCE	MM	MWW	STAY	CW	YG	MARB	BF	REA	API	TI
*	1.3	24	42	*	-1	11	-	-	-	-	-	-	-	-

S35S is a daughter of the MCH Maximus herd sire. This halfblood female sells bred to the calving ease Smooth Sailin bull.

49 OC Early Dawn OCR12

Breeder: Indian Creek Simmentals ASA#2328103 Tattoo: OCR12
 Dbl. Polled Blk Purebred BD: 2-11-05 Adj. BW: 82 Adj. WW: 534

SRS J914 Preferred Beef LRS Preferred Stock 370C

HS Natalie N920 SRS G733 Glimmer
 HC Power Drive 88H
 Hooks/HS Queen 33K

Pasture Sire: Kenco/MF Powerline 204L on 6-10 to 7-21-08
 Est. Plan Mating EPDs: 4 1.9 33 65 4 9 25 19
 CW 4.4 YG -.08 Marb .15 BF .02 REA .48 API 101 TI 63
 Pasture Sire: SS Ebonys Masterwork on 7-21 to 8-24-08

CE	BW	WW	YW	MCE	MM	MWW	STAY	CW	YG	MARB	BF	REA	API	TI
6	0.6	29	57	3	7	22	18	-2.6	-.04	.25	.02	.26	105	63

Preferred Beef can't be beat for his maternal characteristics, because these cows flat work. She is solid black and moderate framed easy keeper. Buy with confidence, she will make you money.



SS Blk Lass S514S

Breeder: Double S Farms ASA#2403200 Tattoo: S514S
Polled Blk 1/2 SM 1/4 CS 1/4 AN BD: 11-7-06 Adj. BW: 80 Adj. WW: 652

CE	BW	WW	YW	MCE	MM	MWW	STAY	CW	YG	MARB	BF	REA	API	TI
*	1.6	30	49	*	-4	11	-	-	-	-	-	-	-	-

JF BH Choice Plus 909J BH Black Herks Edge 759G
Nichols Kelly 75U

1514

Pasture Sire: STF Smooth Sailin 151S on 12-23-07 to 2-19-08
Est. Plan Mating EPDs: * 0.2 28 47 * 0 14 -
CW - YG - Marb - BF - REA - API - TI -
Pasture Sire: SS Ebonys Mastermind on 3-25 to 7-10-08

S514S is another complete made, functional halfblood female sired by Choice Plus selling bred to STF Smooth Sailin, the Reserve Champion Bull at the 2007 Kentucky State Fair.



Swain Molly 525R

Breeder: Indian Creek Simmentals ASA#2331777 Tattoo: 525R
Dbl. Polled Blk Purebred BD: 12-1-05 Adj. BW: 90 ET Adj. WW: 641

CE	BW	WW	YW	MCE	MM	MWW	STAY	CW	YG	MARB	BF	REA	API	TI
8	1.5	47	76	-2	-4	20	19	9.5	.01	.10	.00	.10	106	70

Brooks Above Par Ellingson Black Perfector
STF Rebeca
Swain-SCF Molly 024K FS Black Jack XPPQ
CEZS Black Mindy

Pasture Sire: Kenco/MF Powerline 204L on 6-10 to 7-21-08
Est. Plan Mating EPDs: 5 2.3 42 75 2 3 24 20
CW 10.4 YG -.06 Marb .08 BF .01 REA .40 API 101 TI 66
Pasture Sire: SS Ebonys Masterwork on 7-21 to 8-24-08

Wow! Check out the pedigree of this young cow. Above going back to Black Mindy on the dam side. Molly is a young cow that has a very productive life ahead of her. This mating with Powerline will be exciting.



CEZS Black Mindy



COTT-GFI Kana P4044

Breeder: Black Ridge Simmentals ASA#2245470 Tattoo: P4044
Dbl. Polled Blk Purebred BD: 2-28-04 Adj. BW: 92 Adj. WW: 571

CE	BW	WW	YW	MCE	MM	MWW	STAY	CW	YG	MARB	BF	REA	API	TI
2	3.7	34	60	3	3	20	25	6.4	.16	.11	.02	-.23	102	59

GFI Magnum K52 Ellingson Black Perfector
RIV Blk Josie 43B 755G
COTT Kana 055K COTT Rib Eye 885H
ACC Black Lady 620H

Pasture Sire: Ebonys Acclaim DBLR P33 on 12-3-07 to 2-21-08
Est. Plan Mating EPDs: 9 1.8 26 48 3 10 23 22
CW -6.0 YG .01 Marb .13 BF .02 REA .02 API 106 TI 58

P4044 offers genetics rich in the Cottonwood CC tradition. She is an attractive Magnum daughter whose mating to Acclaim should produce a great one. Acclaim sires them all black and polled with a touch of fancy. Estimated calving date 10-27-08.



BK All Mine Joker P309

Breeder: Black Ridge Simmentals ASA#2266147 Tattoo: P309
Dbl. Polled Blk Purebred BD: 3-11-04 Adj. BW: 72

CE	BW	WW	YW	MCE	MM	MWW	STAY	CW	YG	MARB	BF	REA	API	TI
4	1.8	29	63	1	5	20	25	3.1	.02	-.12	.03	.22	95	52

Tracing back the matriarch Triple C Sweethart this female offer a lot of good for your consideration. Confirmed to the Ranch Hand breeding, P309 should be sporting a new calf by sale time. Dam sells as lot #58.

PVF-BF BF26 Black Joker

Harts Black Casino B408

PVF-BF Mabelle C131

Triple C Shes All Mine M

HC Power Drive 88H

Triple C Sweethart B397

A.I. Sire: Sand Ranch Hand on 11-29-07

Est. Plan Mating EPDs: 7 -0.3 33 62 2 3 20 22

CW -1.2 YG -.03 Marb -.03 BF .01 REA .17 API 104 TI 61

Pasture Sire: Ebonys Acclaim DBLR P33 on 12-3-07 to 2-21-08



Reed Heat is On 48P

Breeder: Indian Creek Simmentals ASA#2234507 Tattoo: 48P
Dbl. Polled Blk Purebred BD: 4-2-04 Adj. BW: 90 ET

CE	BW	WW	YW	MCE	MM	MWW	STAY	CW	YG	MARB	BF	REA	API	TI
1	4.7	34	63	3	5	22	23	6.9	.02	.13	-.01	-.06	96	57

48P is a stylish black cow that produces show calves. She will calve before sale day to SS Ebonys Masterwork, a son of Black Joker and the great breed matron SOSF Ebonys Joy L-123. Masterwork is a full brother to SS Masterpiece, the sire of the \$15,000 high-selling heifer in the 2008 Top 10 Sale.

Drake Heat Wave

Meyers Red Top

G&L Miss 600U 709D

RS Kadabra

Hart Subzero G322

RW Pref Lady 36H

Pasture Sire: SS Ebonys Masterwork on 7-21 to 8-24-08

Est. Plan Mating EPDs: 3 2.2 35 65 2 7 24 25

CW 4.4 YG .05 Marb .02 BF .02 REA .07 API 102 TI 60



BK Daytona Allison N210

Breeder: Black Ridge Simmentals ASA#2223131 Tattoo: N210
 Polled Blk Purebred BD: 2-19-03 Adj. BW: 81 Adj. WW: 523

CE	BW	WW	YW	MCE	MM	MWW	STAY	CW	YG	MARB	BF	REA	API	TI
-1	4.8	42	76	-2	0	21	25	-11.2	.00	-.01	.02	.03	94	57

BF 0K34 Daytona PVF-BF BF26 Black Joker
 TJ 23H
 BK Allison ER Americana 537B
 BK Sally Mack

Pasture Sire: Ebonys Acclaim DBLR P33 on 12-3-07 to 2-21-08
 Est. Plan Mating EPDs: 7 2.4 30 57 1 9 23 22
 CW -0.1 YG .01 Marb .05 BF .01 REA .08 API 101 TI 58

Allison's pedigree tend toward growth and power but will be moderated in the calf she is carrying by the sure fire calving ease and high maternal genetics of Ebony's Acclaim. Estimated calving date 11-6-08.



GFI Ruby N74

Breeder: Black Ridge Simmentals ASA#2201916 Tattoo: N74
 Dbl. Polled Blk Purebred BD: 3-30-03 Adj. BW: 92 ET Adj. WW: 641

CE	BW	WW	YW	MCE	MM	MWW	STAY	CW	YG	MARB	BF	REA	API	TI
7	1.2	34	59	1	6	23	26	-5.5	-.01	.17	.01	.07	119	63

Circle S Leachman 600U Landridge Jet Black
 BDV R52 Ms Black Knight
 GFI Ruby K020 BS Mr Arapahoe 811A
 HF/GFI Ruby Red 33E

Pasture Sire: Ebonys Acclaim DBLR P33 on 12-3-07 to 2-21-08
 Est. Plan Mating EPDs: 9 -0.8 34 58 2 4 21 23
 CW -4.2 YG -.05 Marb .15 BF .00 REA .09 API 118 TI 67

We are selling out our fall calving females or this one would not be offered. We hate to see her go, but our loss is your gain. Ruby's pedigree is rich with legends that laid the foundation our breed stand on today. She is a beautiful cow that can graze beside anyone's best and look good. She sells safe to the Ebony Antoinette son Acclaim for another black beauty. Estimated calving date 11/11/08.



GFI Daisy N110

Breeder: Black Ridge Simmentals ASA#2201900 Tattoo: N110
 Dbl. Polled Blk Purebred BD: 4-9-03 Adj. BW: 96 Adj. WW: 683

CE	BW	WW	YW	MCE	MM	MWW	STAY	CW	YG	MARB	BF	REA	API	TI
6	3.6	43	71	4	1	22	20	-5.4	.02	.03	.01	-.06	97	64

GFI Perfector K47 Ellingson Black Perfector
 RIV Blk Josie 43B 755G
 GFI Miss Ranger H87 GFI HF Ranger F103
 GFI Miss Ticket F171

Pasture Sire: Ebonys Acclaim DBLR P33 on 12-3-07 to 2-21-08
 Est. Plan Mating EPDs: 10 1.9 31 55 4 8 23 19
 CW -2.3 YG -.01 Marb .08 BF .01 REA .09 API 101 TI 61

Daisy's high growth and powerful genetic package will blend well with the moderating influence of Ebony's Acclaim to produce a calf with functional numbers across the board. Estimated calving date 11-6-08.



Triple C Shes All Mine M016

Breeder: Black Ridge Simmentals ASA#2156424 Tattoo: M016
 Dbl. Polled Blk Purebred BD: 1-5-02 Adj. BW: 88 ET Adj. WW: 697

CE	BW	WW	YW	MCE	MM	MWW	STAY	CW	YG	MARB	BF	REA	API	TI
6	1.7	30	65	7	1	16	21	-8.4	.04	.06	.03	.00	101	62

HC Power Drive 88H WLE Power Stroke
 Kappes Lady Irish F88
 Triple C Sweethart B397 Meyer Ranch Mr 745
 Miss T Bird CH U020

Pasture Sire: Ebonys Acclaim DBLR P33 on 12-3-07 to 2-21-08
 Est. Plan Mating EPDs: 10 0.8 24 51 5 9 21 21
 CW -5.4 YG -.02 Marb .09 BF .02 REA .10 API 107 TI 58

Again, only because we are getting out of the fall calving business would we sell a cow with this power. M016 comes from foundation genetics of the Triple C herd and is at the front end of a production life. You can't go wrong with a female like this. Her daughter by Joker sells as lot #53. Estimated calving date 10-22-08.

59 M16

Breeder: Black Ridge Simmentals ASA#2173054 Tattoo: M16
Dbl. Polled Blk Baldy Purebred BD: 9-16-02 Adj. BW: 92

CE	BW	WW	YW	MCE	MM	MWW	STAY	CW	YG	MARB	BF	REA	API	TI
4	2.7	38	78	1	1	20	17	18.2	.11	.21	.02	.12	100	64

WLE Overload LRS Preferred Stock 370C
Nichols Joliette C75
MC Miss BM 19 Black Mick
MC Miss JB 19

A.I. Sire: Sand Ranch Hand on 11-29-07
Est. Plan Mating EPDs: 8 0.7 39 71 2 0 19 16
CW 5.9 YG .00 Marb .16 BF .01 REA .12 API 103 TI 68
Pasture Sire: Ebony's Acclaim DBLR P33 on 12-3-07 to 2-21-08

The growth of Overload combined with the maternal power of Mick make M16 a highly functional female that will pay dividends. She sells safe to a homozygous polled flushmate to GWS Ebony's Trademark 6N. Estimated calving date 11-30-08.



60 BRS Fine Moves M00

Breeder: Black Ridge Simmentals ASA#2202916 Tattoo: M00
Dbl. Polled Homo. Blk Purebred BD: 12-3-02 Adj. BW: 88 Adj. WW: 621

CE	BW	WW	YW	MCE	MM	MWW	STAY	CW	YG	MARB	BF	REA	API	TI
5	0.7	26	43	2	7	20	21	-10.0	-.06	.19	.00	.10	104	59

This female extended pedigree traces back to our roots and to the late Jim Taylor's Kansas herd. M00 is homozygous black and should be mothering her latest edition by Ranch Hand by sale time.

BDV Fine Tune 36K TNT Aftershock G404
BDV Merriha F62
BRS Jane J76 WLE CSA Black Galvanizer
Black Alvita

A.I. Sire: Sand Ranch Hand on 11-29-07
Est. Plan Mating EPDs: 8 -0.9 31 52 2 4 20 21
CW -8.4 YG -.04 Marb .15 BF .00 REA .03 API 111 TI 65
Pasture Sire: Ebony's Acclaim DBLR P33 on 12-3-07 to 2-21-08

61 IC Miss Sturdy M35

Breeder: Indian Creek Simmentals ASA#2199205 Tattoo: M35
Polled Blk 1/2 SM 1/2 AN BD: 10-5-02 Adj. BW: 80 Adj. WW: 723

CE	BW	WW	YW	MCE	MM	MWW	STAY	CW	YG	MARB	BF	REA	API	TI
*	0.8	18	38	*	3	12	-	-	-	-	-	-	-	-

M35 is solid black, very nice SimAngus cow in the prime of her production. She always brings a fat calf in at the end of the summer. Bred to Powerline, this calf will put pounds on the scale.

3C Sturdy F688 BZ Meyer Ranch 734
ER Miss Mack 62B
44 (Commercial Purebred Angus)

Pasture Sire: Kenco/MF Powerline 204L on 6-10 to 7-21-08
Est. Plan Mating EPDs: * 2.0 28 56 * 7 20 -
CW - YG - Marb - BF - REA - API - TI -
Pasture Sire: SS Ebony's Masterwork on 7-21 to 8-24-08

62 IC Lucille Ball K27

Breeder: Indian Creek Simmentals ASA#2069606 Tattoo: K27
Dbl. Polled Red Purebred BD: 5-2-00 Adj. BW: 108 ET Adj. WW: 644

CE	BW	WW	YW	MCE	MM	MWW	STAY	CW	YG	MARB	BF	REA	API	TI
3	4.6	37	62	-3	-1	18	21	6.0	-.01	-.01	-.03	-.12	88	55

K27 is a nice, solid red brood cow that really makes money every year. Her dam is a maternal sister to CEZ Black Mindy and goes back to the great Nichols CEZ 81U foundation cow.

TC Premenition Red Pepper
LL&L Black Beauty
IC C 81 Too Burns Bull X339U
Nichols CEZ 81U

Pasture Sire: Kenco/MF Powerline 204L on 6-10 to 7-21-08
Est. Plan Mating EPDs: 2 3.9 37 68 1 5 23 21
CW 8.7 YG -.07 Marb .02 BF -.01 REA .29 API 92 TI 59
Pasture Sire: SS Ebony's Masterwork on 7-21 to 8-24-08

63 Nichols Coza K111

Breeder: Indian Creek Simmentals ASA#2088899 Tattoo: K111
Dbl. Polled Blk Purebred BD: 4-3-00 Adj. BW: 88 Adj. WW: 690

CE	BW	WW	YW	MCE	MM	MWW	STAY	CW	YG	MARB	BF	REA	API	TI
7	1.5	34	61	3	8	25	20	1.1	-.01	.18	.00	.04	107	64

A foundation Nichols cow, K111 is solid black with a great set of EPDs. This cow has always been very consistent, and she still has a lot of profitability ahead of her.

Nichols Legacy G151 Nichols Blk Destiny D12
Nichols Debra D81
Nichols Coja A143 Nichols Bingo 52Y
Nichols Coja M17T

Pasture Sire: Kenco/MF Powerline 204L on 6-10 to 7-21-08
Est. Plan Mating EPDs: 5 2.3 36 68 4 9 27 21
CW 6.2 YG -.07 Marb .12 BF .01 REA .37 API 102 TI 64
Pasture Sire: SS Ebony's Masterwork on 7-21 to 8-24-08

64 Nichols Performette K105

Breeder: Indian Creek Simmentals ASA#2088897 Tattoo: K105
Dbl. Polled Blk Purebred BD: 4-2-00 Adj. BW: 84 Adj. WW: 628

CE	BW	WW	YW	MCE	MM	MWW	STAY	CW	YG	MARB	BF	REA	API	TI
5	0.6	17	28	1	8	16	17	-19.7	.06	.08	.02	-.27	85	50

K105 is a good, solid foundation cow bred by the Nichols program. She will bring in a nice, fat calf year after year. She is moderate framed and carries a great mating to Powerline.

Nichols Black Jet D4 Circle S Leachman 600U
Nichols Kelly 75U
Nichols Performette G23 Nichols Advantage D54
Nichols Performette Z155

Pasture Sire: Kenco/MF Powerline 204L on 6-10 to 7-21-08
Est. Plan Mating EPDs: 3 1.9 27 51 3 9 22 19
CW -4.2 YG -.03 Marb .07 BF .02 REA .22 API 91 TI 57
Pasture Sire: SS Ebony's Masterwork on 7-21 to 8-24-08

65 Shoestring Limits K387

Breeder: Indian Creek Simmentals ASA#2097785 Tattoo: K387
Dbl. Polled Blk Purebred BD: 9-21-00 Adj. BW: 102 Adj. WW: 755

CE	BW	WW	YW	MCE	MM	MWW	STAY	CW	YG	MARB	BF	REA	API	TI
11	3.9	46	70	1	-5	19	17	8.9	.06	-.15	-.01	-.15	86	58

K387 is an excellent black baldy cow that sells confirmed bred to the carcass bull Jackpot. Check her weaning weight. She ranked in the top 3% of the breed. She will calve shortly after the sale.

Rains Limit Up LRS Preferred Stock 370C
Rains Black Blackie 242B
Shoestring B Barons 86D Leachman Blk Baron 235X
Miss Sarge Z19

A.I. Sire: Hart Jackpot J310 on 2-4-08
Est. Plan Mating EPDs: 6 3.3 34 61 1 2 19 19
CW 3.9 YG .05 Marb .13 BF .01 REA -.06 API 97 TI 61



BRS Joy J73

Breeder: Black Ridge Simmentals ASA#2063515 Tattoo: J73
 Dbl. Polled Homozygous Blk Purebred BD: 11-27-99 Adj. BW: 92 Adj. WW: 613

CE	BW	WW	YW	MCE	MM	MWW	STAY	CW	YG	MARB	BF	REA	API	TI
4	2.9	35	56	8	4	21	26	-4.3	-.06	.13	.00	.24	109	60

WLE CSA Black Galvanizer Black Irish Kansas
 Nichols Miss 77U
 Black Ridge Fanny F29 LLL Black Sambo
 Copper Queen NL19

A.I. Sire: Sand Ranch Hand on 11-29-07
 Est. Plan Mating EPDs: 8 0.3 36 58 5 3 21 23
 CW -2.9 YG -.08 Marb .10 BF -.01 REA .16 API 110 TI 65
 Pasture Sire: Ebonys Acclaim DBLR P33 on 12-3-07 to 2-21-08

Joy has a little age on her; but, with a new addition at side by Ranch Hand, she deserves your consideration. Galvanizer daughters are awesome mommy cows, and Joy is no exception. She is the kind that will make you money. She is homozygous black and, very likely, homozygous polled.



IC Sensation H339

Breeder: Indian Creek Simmentals ASA#1981402 Tattoo: H339
 Polled Blk Purebred BD: 3-22-98 Adj. BW: 88 ET Adj. WW: 621

CE	BW	WW	YW	MCE	MM	MWW	STAY	CW	YG	MARB	BF	REA	API	TI
2	1.8	19	37	-1	6	15	19	-12.3	-.07	.01	-.01	-.02	82	48

H339 is a nice cow that has always been very productive. Confirmed bred to the high growth bull Hart Jackpot. She goes back to the great Simmental foundation cow X339.

Meyers Blacktop 206Y Buck
 Meyer Ranch 703
 Burns Cow X339 High Interest
 Miss S Hyland 339

A.I. Sire: Hart Jackpot J310 on 1-13-08
 Est. Plan Mating EPDs: 2 2.3 20 45 0 7 17 20
 CW -6.7 YG -.02 Marb .21 BF .01 REA .01 API 96 TI 55



Nichols Lady H111

Breeder: Indian Creek Simmentals ASA#1993113 Tattoo: H111
 Dbl. Polled Blk Purebred BD: 4-9-98 Adj. BW: 81 Adj. WW: 676 Adj. YW: 1020

CE	BW	WW	YW	MCE	MM	MWW	STAY	CW	YG	MARB	BF	REA	API	TI
10	-0.4	26	61	7	-3	10	26	-1.2	-.04	.00	.00	.12	116	57

This is a three in one package. H111 is a very productive, foundation Nichols cow that really works and sells with a nice heifer calf at side.

68A: Heifer Calf Tattoo: U111 Sire: SOSF Bonus Check N10 BD: 5-22-08
 Est. Plan Mating EPDs: 10 0.5 30 60 7 2 17 22
 CW -0.9 YG -.04 Marb .08 BF .01 REA .19 API 111 TI 61

Nichols Shannigan F5 Black Irish Kansas
 Nichols Debra D81
 Nichols Lady F84 Circle S Leachman 600U
 Nichols Lady D172

Pasture Sire: Kenco/MF Powerline 204L on 6-10 to 7-21-08
 Est. Plan Mating EPDs: 6 1.4 32 67 6 3 19 23
 CW 5.1 YG -.08 Marb .03 BF .01 REA .41 API 106 TI 60
 Pasture Sire: SS Ebonys Masterwork on 7-21 to 8-24-08



BR Miss Zinger 874H

Breeder: Indian Creek Simmentals ASA#2008195 Tattoo: 874H
 Dbl. Polled Blk Purebred BD: 3-27-98 Adj. BW: 98 Adj. WW: 721 Adj. YW: 853

CE	BW	WW	YW	MCE	MM	MWW	STAY	CW	YG	MARB	BF	REA	API	TI
6	3.3	36	53	1	-1	17	22	-1.6	.02	.06	.02	.08	97	57

874H is a solid black cow that really does a great job every year. Last year, she raised a heifer that is staying in the IC herd.

DS Black Zinger 141B Hercules 538P
 Leachman Blk Baldy Z229
 BR Miss Mack 692F 4E Black Mack
 BR Miss Clark 326C

A.I. Sire: SHS Navigator N2B on 1-26-08
 Est. Plan Mating EPDs: 7 2.7 39 63 2 1 20 20
 CW 3.7 YG .11 Marb .06 BF .02 REA -.18 API 98 TI 63



JSF Miss Lona JG56

Breeder: Indian Creek Simmentals ASA#1932587 Tattoo: JG56
 Dbl. Polled Blk Purebred BD: 4-2-97 Adj. BW: 86 Adj. WW: 632

CE	BW	WW	YW	MCE	MM	MWW	STAY	CW	YG	MARB	BF	REA	API	TI
5	1.1	36	43	3	6	19	16	-10.3	-.03	-.02	.00	-.05	83	53

This black cow consistently does a great job raising her calf and has always been a solid recip cow.

JSF Midnight Gost JSF Gray Gost C53
 JSF Midnight Starr
 JSF Miss Black Extra J&C Black Maximizer W5
 JST12 Extra Black

Pasture Sire: Kenco/MF Powerline 204L on 6-10 to 7-21-08
 Est. Plan Mating EPDs: 4 2.1 32 58 4 8 24 19
 CW 0.5 YG -.08 Marb .02 BF .01 REA .33 API 89 TI 58
 Pasture Sire: SS Ebonys Masterwork on 7-21 to 8-24-08



Bucks Miss Hope T72

Breeder: Bucks Cattle ASA#2429097 Tattoo: T72
 Dbl. Polled Blk Purebred BD: 9-8-07 Adj. BW: 78

CE	BW	WW	YW	MCE	MM	MWW	STAY	CW	YG	MARB	BF	REA	API	TI
6	-0.2	32	60	2	7	23	21	-1.9	-.05	.06	.01	.20	105	62

SOSF High Voltage P21 Kenco/MF Powerline 204L
 NJC/TJF Joy
 IC Peanuts Ace N47 BCS Aces High J107
 IC 600U Peanut

This very stylish, solid black fall heifer goes back to the great foundation cow IC 600U Peanut. This heifer has Powerline and the great breed matron NJC/TJF Joy on the top side. This calf has tremendous carcass, growth and maternal numbers. Buy with confidence.

NJC/TJF Joy

Top Shelf Herd Bulls

72 SS Ebonys Mach I TT6

Breeder: Double S Farms ASA#2404635 Tattoo: TT6
Dbl. Polled Homozygous Blk Purebred BD: 4-15-07 Adj. BW: 89 ET Adj. WW: 774

CE	BW	WW	YW	MCE	MM	MWW	STAY	CW	YG	MARB	BF	REA	API	TI
2	-0.2	40	68	8	2	22	21	2.4	.04	.15	.01	.01	104	68

3C Macho M450 BZ

Meyer Ranch 734

3C Crocus H112 B

SOSF Ebonys Joy L-123

HC Power Drive 88H

NJCTJF Joy

TT6 is a homozygous black son of SOSF Ebonys Joy L-123 and 3C Macho. Ebonys Joy has now surpassed the half million dollar lifetime earnings, and her sons and daughters are proving themselves in herds across the country and in Canada by producing the next generation of highly sought after and dollar generating offspring. Mach I is a full brother to the \$21,750 calf champion female at the 2007 North American and the 2008 National Western Stock Show in Denver, now owned by Ruby Cattle Co. (IA) and Kayla Nelson (MN). He will work on purebred cows to infuse the genetics of his dam or on a set of club calf cows with the influence of 3C Macho.



SOSF Ebonys Joy L-123

73 SS Powerline T32

Breeder: Double S Farms ASA#2404611 Tattoo: T32
Dbl. Polled Blk Purebred BD: 2-28-07 Adj. BW: 86 Adj. WW: 647

CE	BW	WW	YW	MCE	MM	MWW	STAY	CW	YG	MARB	BF	REA	API	TI
4	2.5	45	76	3	4	26	20	11.1	.00	.14	.01	.24	103	69

Kenco/MF Powerline 204L

HC Power Drive 88H

SAFN Glamour 11J

SS All Jackie DAXU2 NN27

TNT BDV All Beef 39K

FS Black Jackie DAXU2

SS Powerline T32 is sired by Powerline who is one of the top rib eye area bulls in the breed. His dam is a daughter of the former donor Black Jackie DAXU2 who led the breed for weaning and yearling weight EPD's. T32 has his sires depth and center mass and will be a valuable asset to any commercial operation.



74 SS Mr Pizzazz T400

Breeder: Double S Farms ASA#2404622 Tattoo: T400
Dbl. Polled Blk Baldy Purebred BD: 3-26-07 Adj. BW: 91 Adj. WW: 698

CE	BW	WW	YW	MCE	MM	MWW	STAY	CW	YG	MARB	BF	REA	API	TI
2	2.7	37	62	6	0	18	15	3.1	-0.2	.05	-0.2	-0.09	81	60

3C Macho M450 BZ

Meyer Ranch 734

3C Crocus H112 B

Harkers Pizzazz P107

Meyers Red Top

Harkers Klose Up K7318

SS Mr. Pizzazz is a 3C Macho son out of a Meyers Red Top daughter. This blazed face, wide topped, powerful hipped herd sire will add meat and, perhaps, the Simmental trademark blaze face on his progeny.



75 SS Black Label T38

Breeder: Double S Farms ASA#2404614 Tattoo: T38
Polled Blk Baldy 1/2 SM 1/2 MX BD: 4-2-07 Adj. BW: 80 Adj. WW: 612

CE	BW	WW	YW	MCE	MM	MWW	STAY	CW	YG	MARB	BF	REA	API	TI
*	0.2	29	51	*	2	16	-	-6.7	-0.2	.11	.02	.14	94	57

Triple C Power Plus N23L

HC Power Drive 88H

Triple C Shiny L23D

38

T38 is a very attractive, big ribbed, thick made son of Power Plus. This halfblood herd sire has the baldy head that is very popular among commercial producers.





76 Louken Ken 60TT

Breeder: Louken Cattle Company ASA#2404644 Tattoo: 60TT
 Polled Blk Purebred BD: 3-28-07 Adj. BW: 78 ET Adj. WW: 714

60TT is a solid black son of Dream On and the top-selling donor in last year's sale NJC Kenna. He is a full brother to the Supernatural, herd sire at Double S, and Louken Kenna, the powerful donor at Indian Creek. He is a smooth made, wide topped and thick ended herd sire prospect.

Pedigree & EPDs for Lots 76 & 76A

CE	BW	WW	YW	MCE	MM	MWW	STAY	CW	YG	MARB	BF	REA	API	TI
10	-0.7	29	52	5	8	22	21	-7.6	-.04	.32	.02	.19	123	67

CNS Dream On L186

Nichols Legacy G151

CNS Sheeza Dream K107W

NJC Kenna

Nichols Blk Destiny D12

NJC Gearhart



Louken Supernatural



NJC Kenna

76A Louken Kenon 12TT

Breeder: Louken Cattle Company ASA#2404645 Tattoo: 12TT
 Polled Blk Baldy Purebred BD: 3-29-07 Adj. BW: 78 ET Adj. WW: 695

12TT is a very attractive son of the \$26,750 NJC Kenna donor that sold in last year's sale to Bushy Park Farms. He is a full brother to the Supernatural herd sire at Double S. His low birth weight and great calving ease EPDs should be intriguing to anyone's program. He also has the trademark Simmental blaze face to make those highly sought after feeder cattle.



77 SS Red Dream SS10K

Breeder: Double S Farms ASA#2391071 Tattoo: SS10K
 Scurred Red Purebred BD: 9-2-06 Adj. BW: 75 ET Adj. WW: 670

CE	BW	WW	YW	MCE	MM	MWW	STAY	CW	YG	MARB	BF	REA	API	TI
10	1.6	38	61	6	9	27	19	0.7	.02	.23	.02	.11	111	67

CNS Dream On L186

Nichols Legacy G151

CNS Sheeza Dream K107W

Circle A Miss Cammy

GFI HF Sprint G031

Hooks Camille 98B



SS10K is the red Dream On x Cammy son. He is a very attractive, smooth made and thick ended individual that will make an impact on any set of cows you put him on.

Circle A Miss Cammy



78 SS Frontier T534

Breeder: Double S Farms ASA#2404617 Tattoo: T534
 Dbl. Polled Homozygous Blk 1/2 SM 1/2 AN BD: 2-9-07 Adj. BW: 84 Adj. WW: 702

CE	BW	WW	YW	MCE	MM	MWW	STAY	CW	YG	MARB	BF	REA	API	TI
*	0.6	39	75	*	-1	19	-	8.3	.18	.44	.03	-.23	111	71

GLS Frontier N13

B/R New Frontier

GLS Hostess H16

WLE Miss N407

WLE-CSA Snafu

B D V 407 of Rito 30

T534 is a double halfblood SimAngus bull sired by the North American Champion GLS Frontier N13 and out of a female that is a former Reserve Calf Champion at the American Royal. He is a deep, soggy middled and thick-made prospect. Top 2% of the breed for Terminal Index.

SS Ebonys Grand Master

Dbl. Polled Purebred ASA#2281133 Tattoo: RR802 BD: 3-8-05
Sire: PVF-BF BF26 Black Joker Dam: SOSF Ebonys Joy L-123

CE	BW	WW	YW	MCE	MM	MWW	STAY	CW	YG	MARB	BF	REA	API	TI
16	-7.5	57	95	-2	3	32	26	6.9	.09	-.10	.05	.19	140	82

SS Ebonys Mastermind

Dbl. Polled Purebred ASA#2282211 Tattoo: RR18 BD: 3-16-05
Sire: SAC Mr. MT 73G Dam: SOSF Ebonys Joy L-123

CE	BW	WW	YW	MCE	MM	MWW	STAY	CW	YG	MARB	BF	REA	API	TI
8	-0.5	33	55	-2	5	22	21	-5.7	.09	.18	.04	-.03	112	64

SS Ebonys Premium Blend

Dbl. Polled Purebred ASA#2373419 Tattoo: SS116 BD: 9-10-06
Sire: Remington Red Label HR Dam: SOSF Ebonys Joy L-123

CE	BW	WW	YW	MCE	MM	MWW	STAY	CW	YG	MARB	BF	REA	API	TI
4	-0.1	38	66	7	6	25	23	1.4	.08	.09	.04	.13	109	67

SS Ebonys Day Dream

Dbl. Polled Purebred ASA#2346586 Tattoo: SS49 BD: 3-5-06
Sire: CNS Dream On L186 Dam: SOSF Ebonys Joy L-123

CE	BW	WW	YW	MCE	MM	MWW	STAY	CW	YG	MARB	BF	REA	API	TI
11	-2.2	37	64	7	6	24	22	-2.9	.09	.30	.05	.09	129	75

STF Smooth Sailin 151S

Dbl. Polled Purebred ASA#2335758 Tattoo: 151S BD: 1-4-06
Sire: CNS Dream On L186 Dam: STF Dreamie 700N

CE	BW	WW	YW	MCE	MM	MWW	STAY	CW	YG	MARB	BF	REA	API	TI
14	-1.2	37	45	6	5	18	21	-12.8	-.04	.34	.02	.13	128	67

Hooks Shear Force 38K

Dbl. Polled Purebred ASA#2081939 Tattoo: 38K BD: 2-19-00
Sire: Nichols Legacy G151 Dam: C&D Tracy

CE	BW	WW	YW	MCE	MM	MWW	STAY	CW	YG	MARB	BF	REA	API	TI
21	-5.3	21	44	1	22	32	27	-18.8	-.14	.49	.03	.41	165	76

Hooks Pacesetter 8P

Dbl. Polled Purebred ASA#2241050 Tattoo: 8P BD: 2-20-04
Sire: Hooks Shear Force 38K Dam: Hooks Meah 22M

CE	BW	WW	YW	MCE	MM	MWW	STAY	CW	YG	MARB	BF	REA	API	TI
16	-1.5	25	53	1	13	26	21	-7.7	-.02	.04	.03	.18	115	60

KenCo/MF Powerline 204L

Dbl. Polled Purebred ASA#2115962 Tattoo: 204L BD: 1-3-01
Sire: HC Power Drive 88H Dam: SAFN Glamour 11J

CE	BW	WW	YW	MCE	MM	MWW	STAY	CW	YG	MARB	BF	REA	API	TI
2	3.1	37	74	5	10	29	21	11.3	-.12	.05	.02	.70	96	61

SS Ebonys Masterwork

Dbl. Polled Purebred ASA#2281132 Tattoo: RR48 BD: 3-11-05
Sire: PVF-BF BF26 Black Joker Dam: SOSF Ebonys Joy L-123

CE	BW	WW	YW	MCE	MM	MWW	STAY	CW	YG	MARB	BF	REA	API	TI
6	-0.4	35	67	2	9	26	26	1.8	.07	-.10	.05	.19	107	59

Ebonys Acclaim DBLR P33

Dbl. Polled Purebred ASA#2240778 Tattoo: P33 BD: 1-24-04
Sire: WLE Power Stroke Dam: NJC Ebony Antoinette

CE	BW	WW	YW	MCE	MM	MWW	STAY	CW	YG	MARB	BF	REA	API	TI
14	0.0	18	37	4	18	27	21	-14.8	-.06	.11	.01	.09	112	56



Top Shelf Reference Sires



Breeders Top Ten Customer Appreciation Sale

5:00 p.m. • *Friday*
September 19, 2008

Held at the
Double S Farms Sale Facility
in Fountain Run, Kentucky



View sale offering
in color online at
www.ebersale.com

**Selling
78 Lots of
Elite
Simmental
Genetics**

**Bred Females,
Donors,
Pairs,
Herd Bull
Prospects,
Embryos and
Pregnancies!**

Eberspacher
ENTERPRISES INC.

2904 County Road 6
Marshall, MN 56258

First Class
U.S. Postage
PAID
Permit #86
Marshall, MN

FIRST CLASS MAIL: TIME DATED MATERIAL!

TO:

PLEASE BRING THIS CATALOG AND YOUR ASA # WITH YOU TO THE SALE!