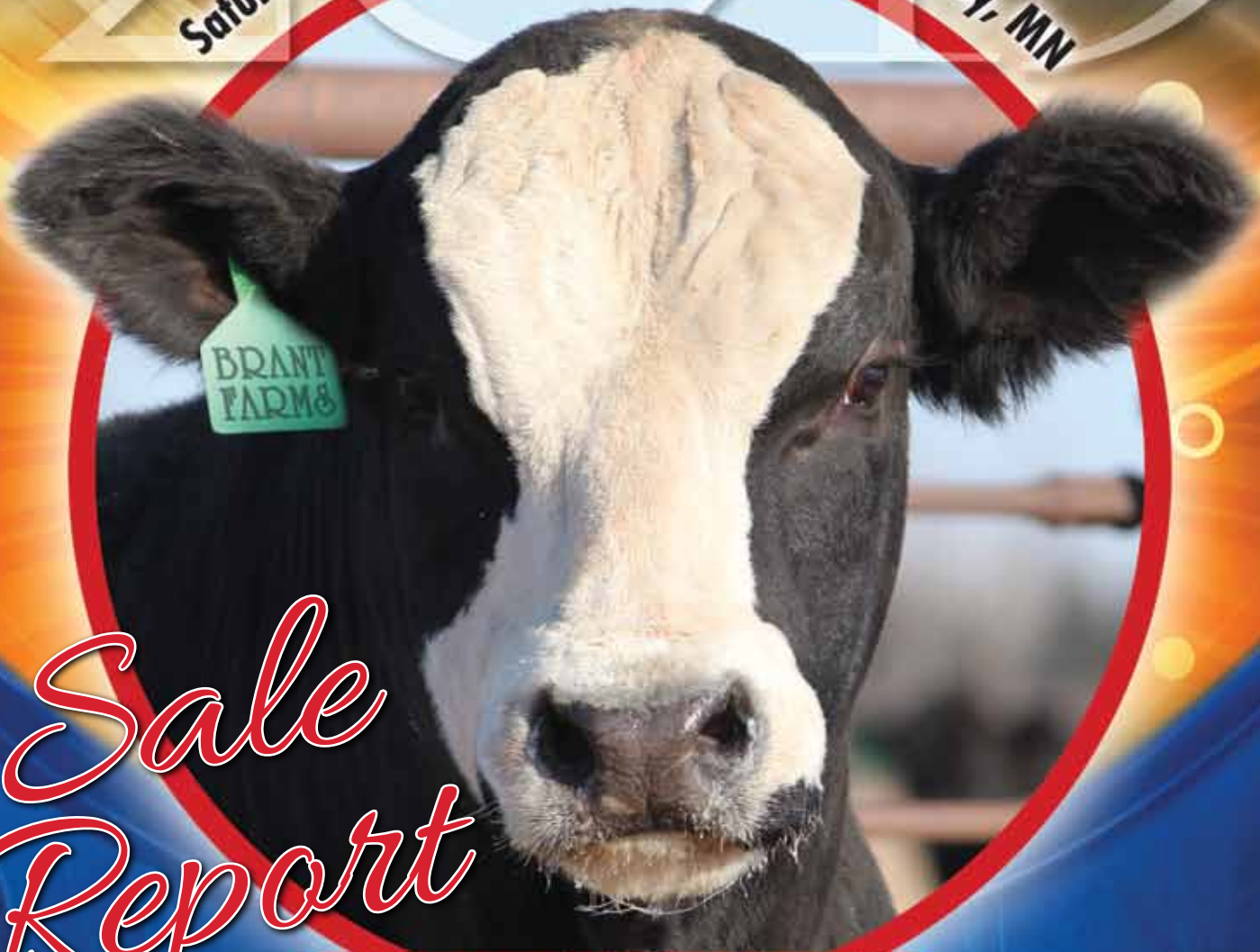


2015  
Saturday, April 11th • 12:00 Noon • Hinckley, MN



*Sale  
Report*

**BRANT FARMS**

**GENETIC  
BALANCE**

*SimGenetics Sale*

COW/CALF PAIRS ~ ELITE BRED FEMALES ~ OPEN HEIFERS ~ PERFORMANCE TESTED BULLS



The 11th Annual Brant Farms Genetic Balance sale was held at the Brant Farms sale facility near Hinckley, MN, on April 11th. Brant Farms has made a name for themselves by producing functional, hardworking, good looking cattle with genetic balance. Ron Brant and his cattle manager John Von Rueden had the cow/calf pairs, open females and herd bull prospects looking the part and assembled an outstanding sale offering. Match the great cattle with the beautiful weather and it resulted in the best Brant Farms sale to date. The large crowd of loyal Brant Farms customers and new prospective buyers actively appraised the cattle. Kirk Lynch, Mark Dougherty and Greg Zimpel are proud new owners of calf feeders from Brant Farms.

The entire Brant Farms crew would like to thank their bidders and buyers at this year's sale. All of the people that showed interest, attended the sale and purchased cattle via phone lines and on liveauctions.tv are all greatly appreciated. Keep us posted on the results of your purchases and we look forward to seeing you next year!

**CONGRATULATIONS TO  
CALF FEEDER WINNERS:  
Kirk Lynch, Mark Dougherty and  
Greg Zimpel**



**Lot 40**

### Brant X91U

Hooks Shear Force 38K x Brant Candace U91R  
Bred to Elm-Mound Upgrade Z4  
Buyer: Lehrman Family Simmentals, Spencer, SD

**\$16,000**



**Lot 1**

### Brant Just A Moment A11T

TNT Gunner N208 x TCF/RCC Tempting Moments  
Brant C11A – calf at side sired by WS Prime Beef Z8  
Buyer: Lehrman Family Simmentals, Spencer, SD

**\$10,000**



**Lot 5**

### Brant Albany A2

Hoover Dam x Brant Chelada Y506U  
Brant C2A – calf at side sired by Mr. NLC Upgrade U8676  
Buyer: Gonsalves Ranch, CA & Heartland Simmentals, IA

**\$8,000**



**Lot 9**

### Brant Adora A17S

Top Fuel U250 HR x Brant P4435  
Brant C17A – calf at side sired by Coleman Regis 904  
Buyer: Strand SimAngus, Platte, SD

**\$7,500**



**Lot 16**

## Brant Amy A49

S A V Iron Mountain 8066 x Brant W91R  
 Brant C49A – calf at side sired by Brant Monument A7  
 Buyer: Gunn Simmentals, TX & Echard Farms, IA

**\$7,250**



**Lot 8**

## Brant Annabel A4279

Top Fuel U250 HR x Brant P4435  
 Brant C479A – calf at side sired by Coleman Regis 904  
 Buyer: Strand SimAngus, Platte, SD

**\$7,000**



**Lot 25**

## Brant Pocket Change A66

K-LER Young Money x Brant X4088  
 Brant C66A – calf at side sired by PVF Insight 0129  
 Buyer: Lehrman Family Simmentals, Spencer, SD

**\$7,000**



**Lot 37**

## Brant Barfly YSLPW

Wheatland Red Ace 747T x Brant WSLPS  
 Brant CSLWY – calf at side sired by Brant Big Time Z103S  
 Buyer: Chad Ruda, Fremont, NE

**\$6,500**



**Lot 39**

## Brant Too Sassy Y305S

BMR Explorer x Brant P4133  
 Brant C305Y – calf at side sired by WLE Power Stroke  
 Buyer: Chad Ruda, Fremont, NE

**\$6,500**



**Lot 3**

## Brant Afton A435T

S A V Iron Mountain 8066 x Brant T4435  
 Brant 435AC – calf at side sired by GLS New Direction X184  
 Buyer: Strand SimAngus, Platte, SD

**\$6,250**





**Lot 11**

**Brant Aerial A4020**

Red Northline Fat Tony 605U x Brant P4020  
 Brant C420A – calf at side sired by WS Prime Beef Z8  
 Buyer: Rockin H Simmentals, Canby, MN

**\$6,000**

*Sale Averages*

1 Simmental Donor averaged	\$16,000
40 Simmental & Sim-Influence Pairs averaged	\$4,900
20 Simmental & Sim-Influence Bulls averaged	\$4,543
4 Simmental & Sim-Influence Opens averaged	\$3,750
65 Simmental & Sim-Influence Lots averaged	\$4,900



**Marketing Representatives:**  
 Val Eberspacher, EE Sales, MN;  
 Kelly Schmidt, EE Sales, MN;  
 Tom Rooney, AgriMedia, IA;  
 Bill Zimmerman, ASA Rep, MN;  
 Courtney Hodgson, LiveAuctions.tv, IL

**Auctioneer:**  
 Col. Tracy Harl, NE



37093 Fish Tail Rd, Hinckley, MN 55037  
**RON BRANT, OWNER**  
 Phone 320-384-6613 • Cell 612-390-3836  
**John Von Rueden, Cattle Manager:**  
 Cell 612-490-1649

•••  
 Welcome Guest Breeder: Jazzy Simmental  
 Julie Franko 218-565-1759

**Professional Sale Management:**



Val & Lori Eberspacher, Sales Mgrs.  
 2904 County Road 6, Marshall, MN  
 Office 507-532-6694 • Cell 612-805-7405  
 Fax 507-532-9457  
 Kelly Schmidt 406-599-2395  
 sales@ebersale.com • www.ebersale.com